

Kearny Mesa Community Plan Update

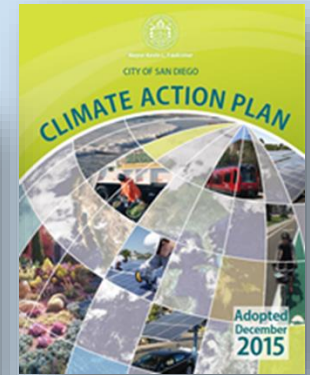
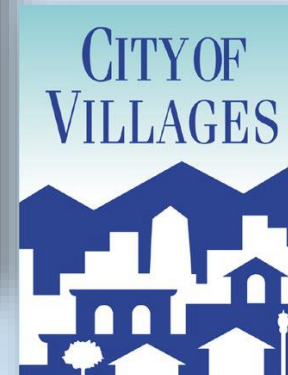
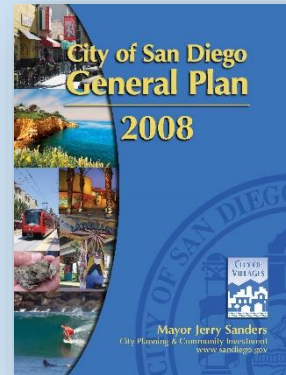
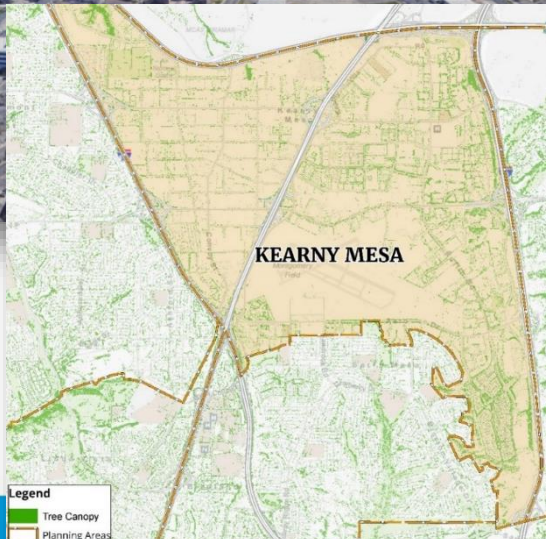
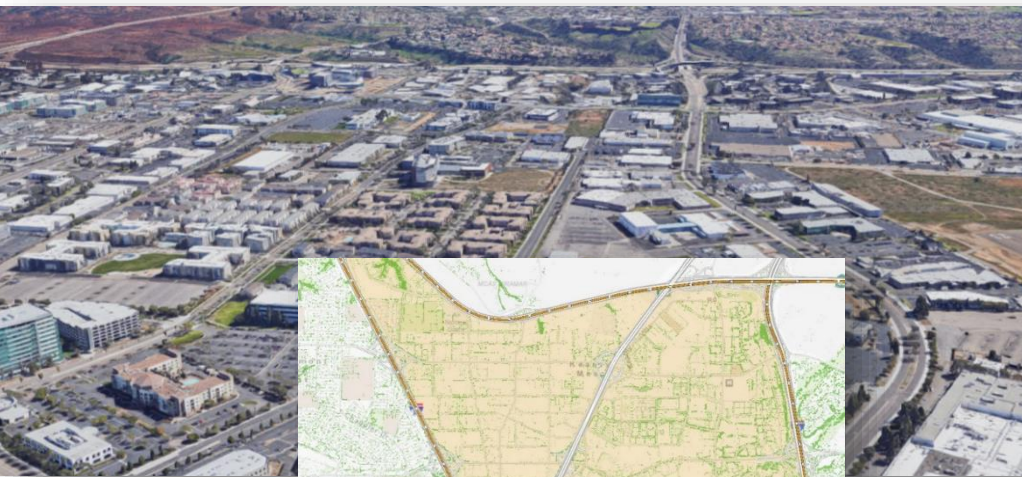
**Community Forest Advisory Board Meeting:
June 10, 2020**

Lisa Lind, Senior Planner

Scott Sandel, Parks Designer

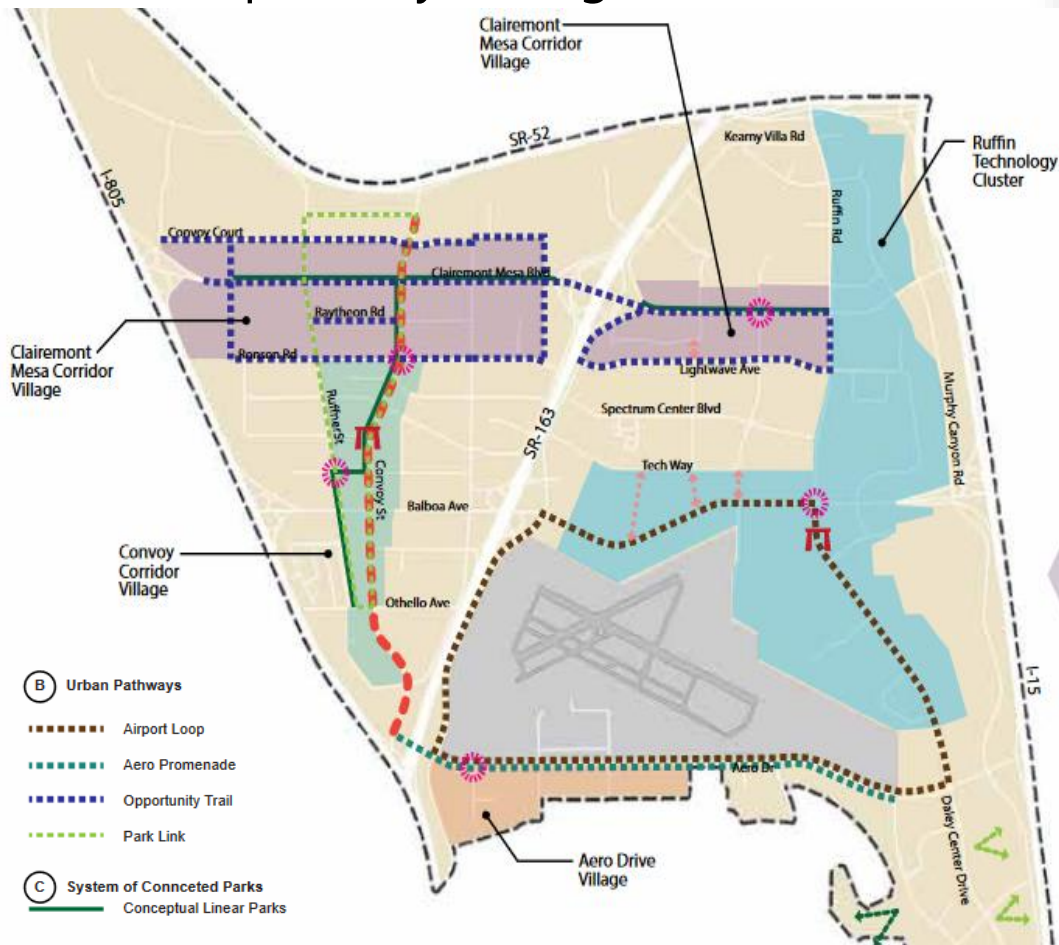
Community Plan Update

- Multi-year comprehensive plan update
- Long-range plan aligned with General Plan and Climate Action Plan



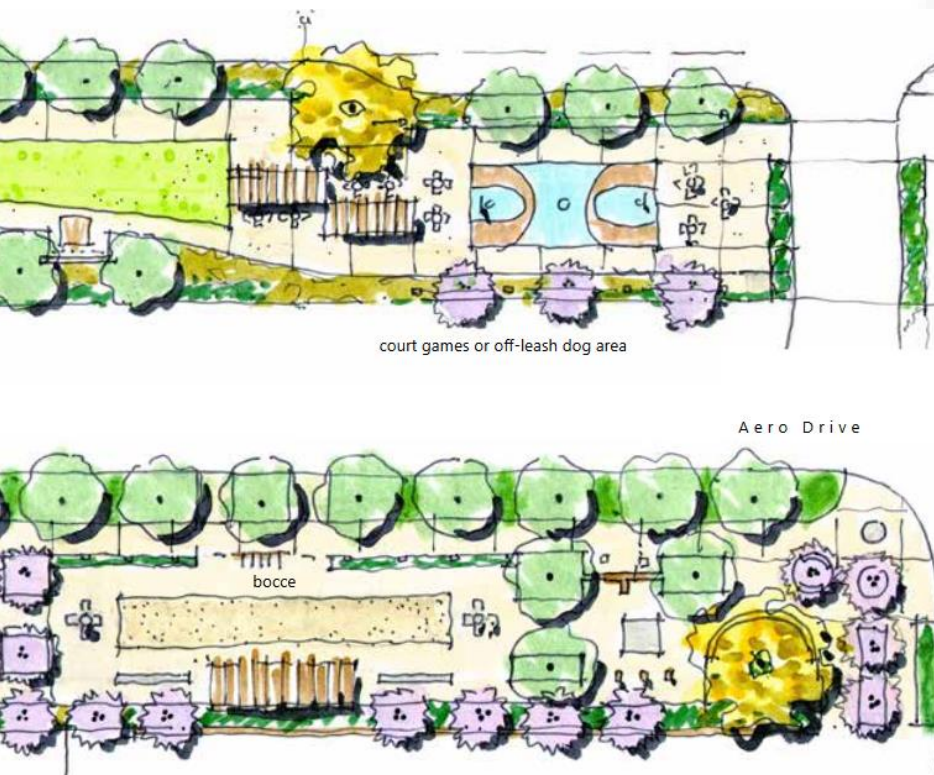
Draft Community Plan

- Village areas
- Multimodal network
- Urban pathways along corridors



Draft Community Plan

- Community connections to access transit and destinations
- Park value consistent with Draft Parks Master Plan



Urban Forestry

- Strengthen urban tree canopy
- Design for a pedestrian-oriented walking environment
- Maximize shade and storm water retention



Draft Community Plan References:

- Section 5.3: Urban Forestry (pg. 89)
- Figure 23: Street Trees (pg. 91)
- Table 7: Street Tree Matrix (pg. 92)
- Section 5.0 Policies (pg. 38)



LEGEND

- Corridor for multiple species with the same form and size
- Corridor for one or two species
- Neighborhood gateway for a combination of accent trees and primary

Urban Forestry

- Street tree palette expanded with multiple tree species for primary, secondary, and accent trees
- Corridors match urban pathways and consider parkway widths
- Special consideration for Convoy Street as a destination



Trees for Parkway between 6-ft. and 10-ft.



Corymbia ficifolia
Red Flowering Gum



Koelreuteria bipinnata
Chinese Flame Tree



Platanus racemosa
California Sycamore



Ulmus parvifolia
Chinese Evergreen Elm

Trees for Parkway between 4-ft. and 6-ft.



Afrocarpus gracilior
Fern Pine



Arbutus marina
Strawberry Tree



Calodendrum capense
Cape Chesnut



Cercidium x 'Desert Museum'
Palo Verde



Geijera parviflora
Australian Willow



Ginkgo biloba
Ginkgo Tree



Jacaranda mimosifolia
Jacaranda



Lophostemon confertus
Brisbane Box



Rhus lancea
African Sumac



Tabebuia impetiginosa
Pink Trumpet Tree



Lagerstroemia fauriei
Crape Myrtle



Cercis canadensis 'Forest Pansy'
Eastern Redbud

Trees for Parkway between 2-ft. and 4-ft.

Urban Forestry

Street tree matrix and policies:

- Shade for urban pathways
- Street tree planting programs
- Urban greening and plantings within freeway rights-of-way
- Enhanced maintenance for lighting and landscaping
- Biofiltration planters within parking lots
- Partnerships for storm water management infrastructure

Street Tree Recommendations

Street	Botanical Name	Common Name (Image)	Mature Size (H x W)	Tree Spacing	Water Use	Characteristics
Aero Drive						
Primary	<i>Arbutus 'Marina'</i>	Strawberry Tree (F)	30' X 25'	25'	Low	Flowering
	<i>Platanus racemosa</i>	California Sycamore (C)	40' X 30'	30'	Medium	Native
Secondary	<i>Lophostemon confertus</i>	Brisbane Box (L)	30' X 20'	25'	Medium	Evergreen
Accent	<i>Jacaranda mimosifolia</i>	Jacaranda (K)	30' X 30'	30'	Medium	Flowering
Balboa Avenue						
Primary	<i>Lophostemon confertus</i>	Brisbane Box (L)	30' X 20'	25'	Medium	Evergreen
	<i>Corymbia ficifolia</i>	Red Flowering Gum (A)	35' X 40'	30'	Low	Flowering
Secondary	<i>Afrocarpus gracilior</i>	Fern Pine (E)	50' X 30'	30'	Medium	Evergreen
Accent	<i>Cercidium x 'Desert Museum'</i>	Palo Verde (H)	25' X 25'	25'	Very Low	Flowering, Green Trunk
Clairemont Mesa Blvd						
Primary	<i>Platanus racemosa</i>	California Sycamore (C)	40' X 30'	30'	Medium	Native
	<i>Arbutus 'Marina'</i>	Strawberry Tree (F)	30' X 25'	30'	Low	Flowering
Secondary	<i>Geijera parviflora</i>	Australian Willow (I)	30' X 20'	25'	Low	Evergreen
Accent	<i>Tabebuia impetiginosa</i>	Pink Trumpet Tree (N)	25' X 25'	25'	Medium	Flowering
	<i>Lagerstroemia fauriei hybrids</i>	Crape Myrtle (O)	25' X 25'	25'	Medium	Flowering
Convoy Street						
Primary	<i>Ulmus parvifolia</i>	Chinese Evergreen Elm (D)	50' X 40'	30'	Medium	Evergreen
	<i>Corymbia ficifolia</i>	Red Flowering Gum (A)	35' X 40'	30'	Low	Flowering
Secondary	<i>Koelreuteria bipinnata</i>	Chinese Flame Tree (B)	30' X 20'	25'	Medium	Flowering, Foliage Color
Accent	<i>Cercis canadensis 'Forest Pansy'</i>	Eastern Redbud (P)	25' X 25'	25'	Medium	Flowering
	<i>Ginkgo biloba</i>	Ginkgo Tree (J)	30' X 25'	25'	Medium	Foliage Color
Ruffin Road, Kearny Villa Road						
Primary	<i>Afrocarpus gracilior</i>	Fern Pine (E)	50' X 30'	30'	Medium	Evergreen
Secondary	<i>Rhus lancea</i>	African Sumac (M)	30' X 30'	30'	Low	Evergreen
Accent	<i>Arbutus marina</i>	Strawberry Tree (F)	30' X 25'	25'	Low	Flowering
Ruffner Road						
Primary	<i>Koelreuteria bipinnata</i>	Chinese Flame Tree (B)	30' X 20'	25'	Medium	Flowering, Foliage Color
Secondary	<i>Calodendrum capense</i>	Cape Chesnut (G)	30' X 30'	30'	Medium	Flowering
Accent	<i>Cercis canadensis 'Forest Pansy'</i>	Eastern Redbud (P)	25' X 25'	25'	Low	Flowering
	<i>Lagerstroemia fauriei hybrids</i>	Crape Myrtle (O)	25' X 25'	25'	Medium	Flowering
Mercury Street, Shawline Street, Industrial Park Driveway						
Primary	<i>Koelreuteria bipinnata</i>	Chinese Flame Tree (B)	30' X 20'	25'	Medium	Flowering, Foliage Color
Secondary	<i>Geijera parviflora</i>	Australian Willow (I)	30' X 20'	25'	Low	Evergreen
Accent	<i>Cercis canadensis 'Forest Pansy'</i>	Eastern Redbud (P)	25' X 25'	25'	Low	Flowering
	<i>Lagerstroemia fauriei hybrids</i>	Crape Myrtle (O)	25' X 25'	25'	Medium	Flowering
Convoy Court, Raytheon Road, Ronson Road, Lightwave Road						
Primary	<i>Lophostemon confertus</i>	Brisbane Box (L)	40' X 20'	25'	Medium	Evergreen
Secondary	<i>Cercidium x 'Desert Museum'</i>	Palo Verde (H)	25' X 25'	25'	Very Low	Flowering, Green Trunk