



# Conservation Element and Sustainability



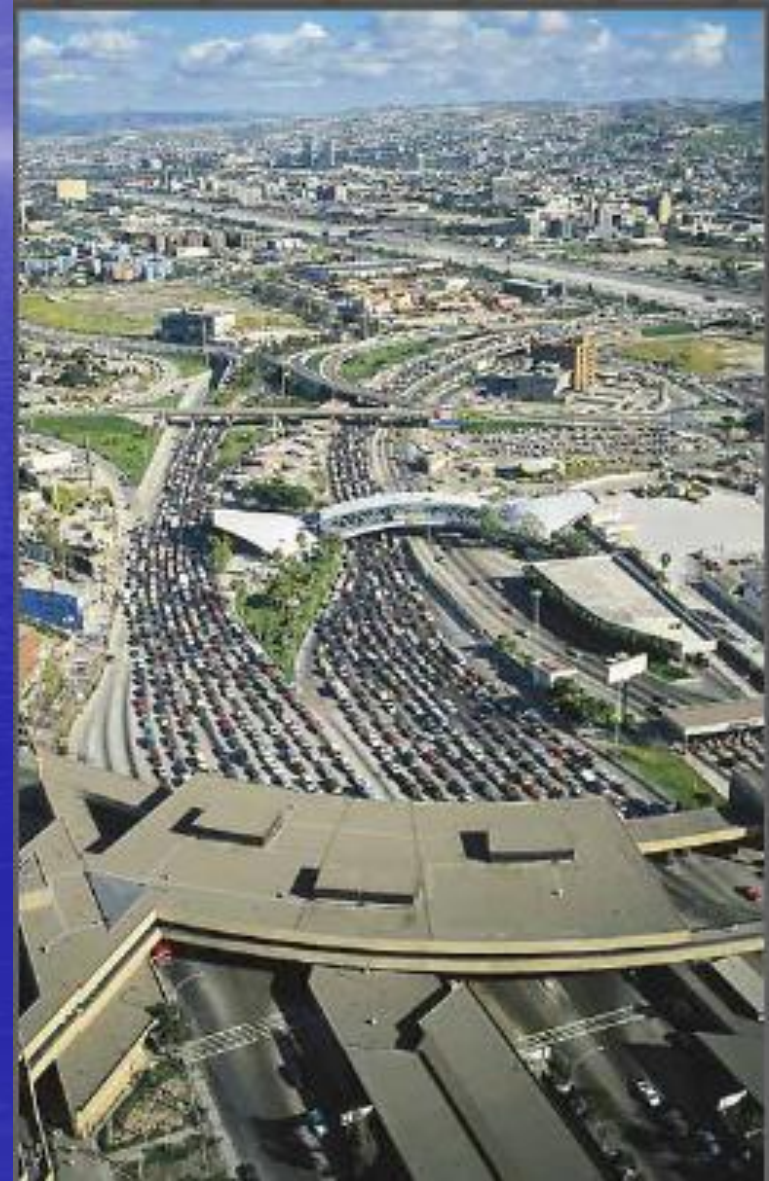
San Ysidro CPU  
Stakeholder Meeting  
February 9, 2011





# Conservation Element

- Protecting and preserving the natural environment
- Environmental quality of life
  - Clean air and water
- Agriculture
  - Community gardens
- Compliance
- Sustainable development
  - Green buildings
  - Link to economy - clean tech industries







# Conservation Element

- Conserve and manage resources
  - Water conservation
  - Energy efficiency and renewables
  - Waste management
  - Wastewater collection and treatment







# Conservation Element

- Preserve and protect parks, open spaces, natural landforms and features
- Expand the urban forest
  - Street tree plans in community plans





# General Plan Water Policies

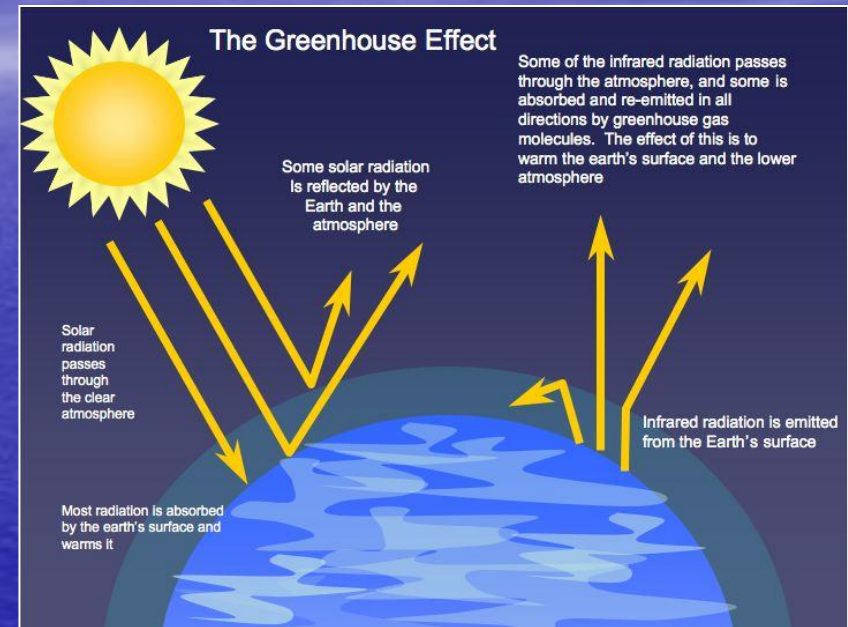
## **Public Facilities and Conservation Elements**

- Water Supply and Infrastructure
  - Increase alternative water sources
  - Expand recycled water distribution system
- Water Conservation
  - Drought tolerant landscape and irrigation systems
  - Water efficient fixtures & appliances
- Water and Planning
  - Water supply assessments
  - Development project review
- Storm water
  - Low impact development
  - Street design



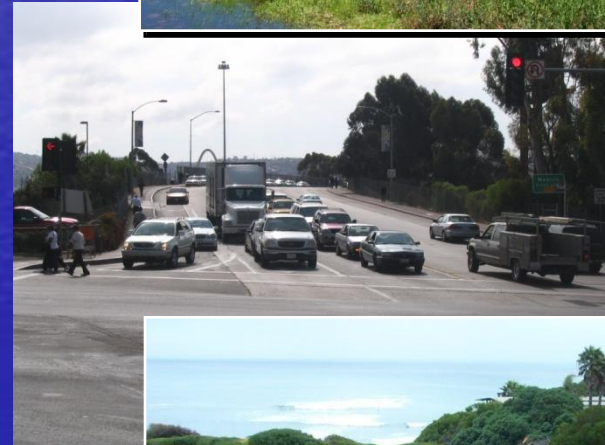
# Conservation Element

- Climate Change – AB 32
  - Reduce carbon footprint, mitigate impacts, and adapt to changes
  - Address sustainable building and practices that reduce global climate change
- Climate Change -SB 375
  - Transit/land use/housing planning
  - Reduce emissions from VMT



# Clean and Sustainable Environment for San Ysidro

- Preserve and protect parks, open spaces, natural landforms and features
  - Dairy Mart Ponds
  - Floodplains
  - Tijuana River Valley
  - Steep hillsides
- Prevent pollution
- Street trees
- Improve air quality
- Implement GP and SB 375





# Community Plan Level: San Ysidro

- Village designations to occur in community plan
- Mi Pueblo Pilot Village
  - Housing
  - Pathways to Knowledge
  - Plazas
  - Restaurant, Mercado, kiosks, and offices





# Conservation –

## Air Quality, Street Trees & Adjacency Issues

<b>Recommended CPPM Element Content</b>	<b>Public Comments (June 2010 to December 2010)</b>
Air Quality	<ul style="list-style-type: none"> <li>• When air quality is bad, we need some kind of green belt around San Ysidro to collect, clean very fine dust, very high particulate matter. There is dust from Truck tires breaking. There is dust from the border</li> <li>• Use siren or public alert system to indicated bad air quality conditions, some kind of “smog alert” to let people know about air quality conditions</li> </ul>
Design Guidelines <ul style="list-style-type: none"> <li>• Street Tree Guidelines</li> </ul>	<ul style="list-style-type: none"> <li>• Plant more trees; suggested the Bougainvillea as a freeway buffer</li> </ul>
Other (ie. Agriculture Resources, Mineral Resources) Adjacency Issues	<ul style="list-style-type: none"> <li>• Clean up Tijuana River Valley – needs more maintenance</li> <li>• Vegetation control</li> <li>• Paint bridges</li> <li>• Maintain drainage channels</li> <li>• Turn Sod Farms into Vineyards – TJRV</li> </ul>



# Conservation –

## Resource Management & Coastal

<b>Recommended CPPM Element Content</b>	<b>Public Comments (June 2010 to December 2010)</b>
<b>Resource Management &amp; Preservation</b> <ul style="list-style-type: none"><li>• Open Space</li><li>• Landforms (Steep Slopes; MHPA; drainage; )</li><li>• Water Resource Management</li><li>• Urban Runoff Management</li><li>• Biological Diversity</li><li>• Wetlands</li><li>• Water Supply</li></ul>	<ul style="list-style-type: none"><li>• In 1943, the vegetation was beautiful, the river ran free, now it is compromised by dirt roads built by immigration and border patrol</li><li>• Preserve and protect open space at Dairy Mart Rd Ponds</li><li>• Vacant eastern slopes - residential/open space opportunity</li><li>• Improve open space - Beyer Blvd near Foothill</li><li>• Need more open space</li></ul>
<b>Coastal Resources</b> <ul style="list-style-type: none"><li>• Wetlands and Lagoons</li><li>• Coastal Public Views /Access</li></ul>	<ul style="list-style-type: none"><li>• Preserve open space at Dairy Mart Rd Ponds</li></ul>



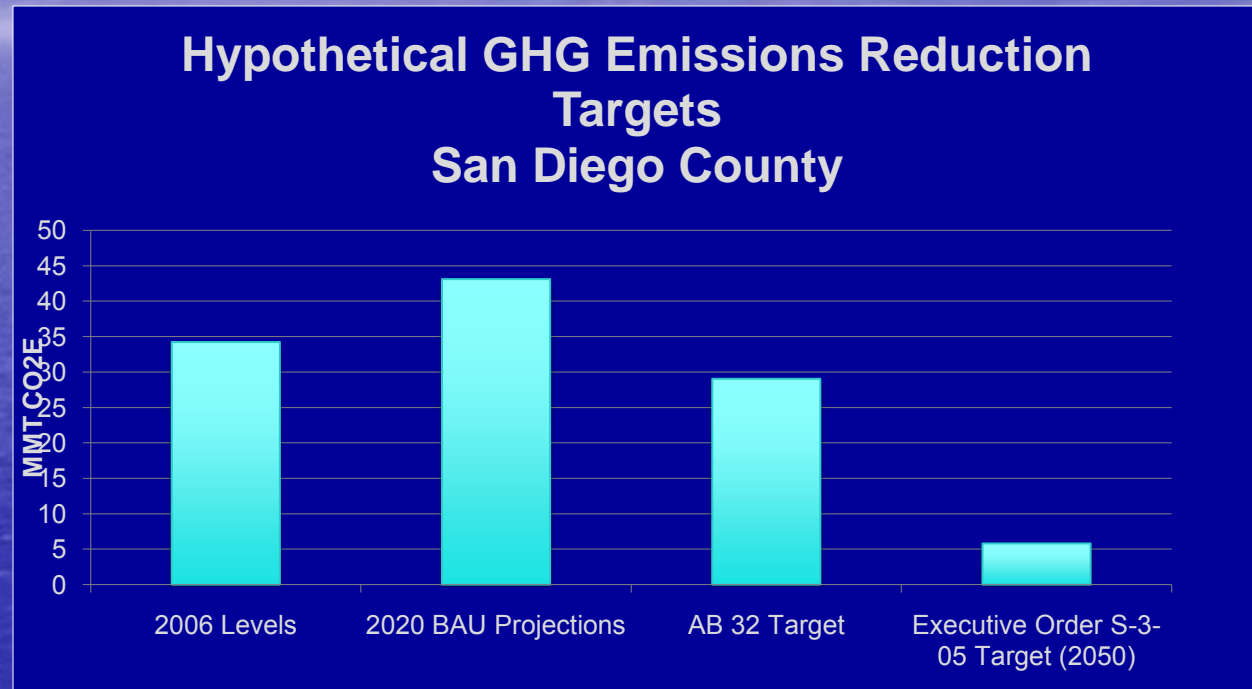
# Conservation – Sustainability

<b>Recommended CPPM Element Content</b>	Public Comments (June 2010 to December 2010)
<p>Sustainability</p> <ul style="list-style-type: none"><li>• Sustainable Development</li><li>• Energy Efficiency</li><li>• Recycling</li><li>• Urban Forestry</li></ul>	<ul style="list-style-type: none"><li>• Reaffirm existing Plan concepts</li><li>• Promote sustainability policies</li><li>• Plant more trees; Bougainvillea as buffer around freeways</li></ul>



# Community Plan EIR

- GHG analysis
- Vulnerability analysis
- Adaptation to impacts
- Link to citywide climate action plan
- Mitigation measures



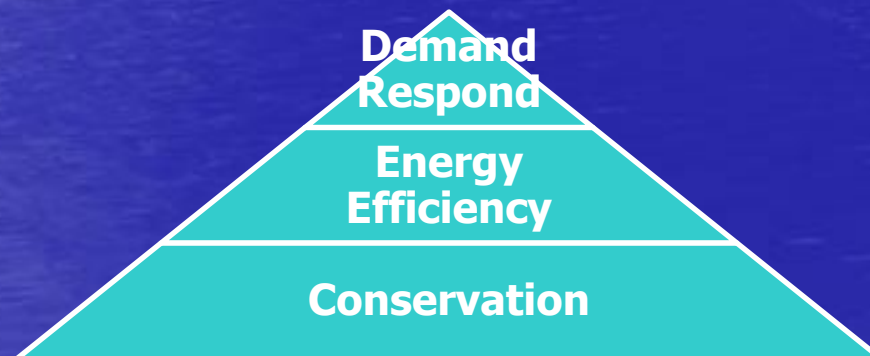
# Efficiency: Key Mitigation Measure

- Supported by GP Policies
- Different tools for new development (Title 24) and existing development (retrofits and incentives)
- Local Government Partnership with SDG&E to encourage energy efficiency



# Energy efficiency

- **Energy efficiency** typically refers to the installation of energy-efficient technologies, tools or equipment to help reduce energy use in homes, businesses, and in new construction
- An energy-efficient home or business reduces energy use, which saves money on utility bills



## Programs Overview

- Residential energy efficiency programs:
  - Home Energy Efficiency Survey
  - Energy Upgrade California
  - Home Energy Efficiency Rebates
  - Advanced Lighting
  - Lighting Exchange events
  - Appliance Recycling
  - HVAC Tune Up/Quality Install Program
  - Summer Saver – AC Cycling
  - Multifamily Energy Efficiency Rebates
  - Energy Upgrade California
  - K-12 Energy Efficient Education Program



Where do I get started?

- Take an online, no-cost **Home Energy-Efficiency Survey** to learn how to reduce your bills and your impact on the environment
- Discover ways to reduce your energy use. Visit [www.sdge.com/saveenergy](http://www.sdge.com/saveenergy) for tips
- Take advantage of a variety of energy- and money-saving programs

# San Ysidro

## COMMUNITY PLAN UPDATE

### Conservation Discussion Questions

Do you have suggestions for goals?

- Air quality, Dairy Mart Ponds, steep hillsides, public views, sustainability concepts

Does the plan need a street tree plan?

Does the plan need to identify public views and preservation of those views?



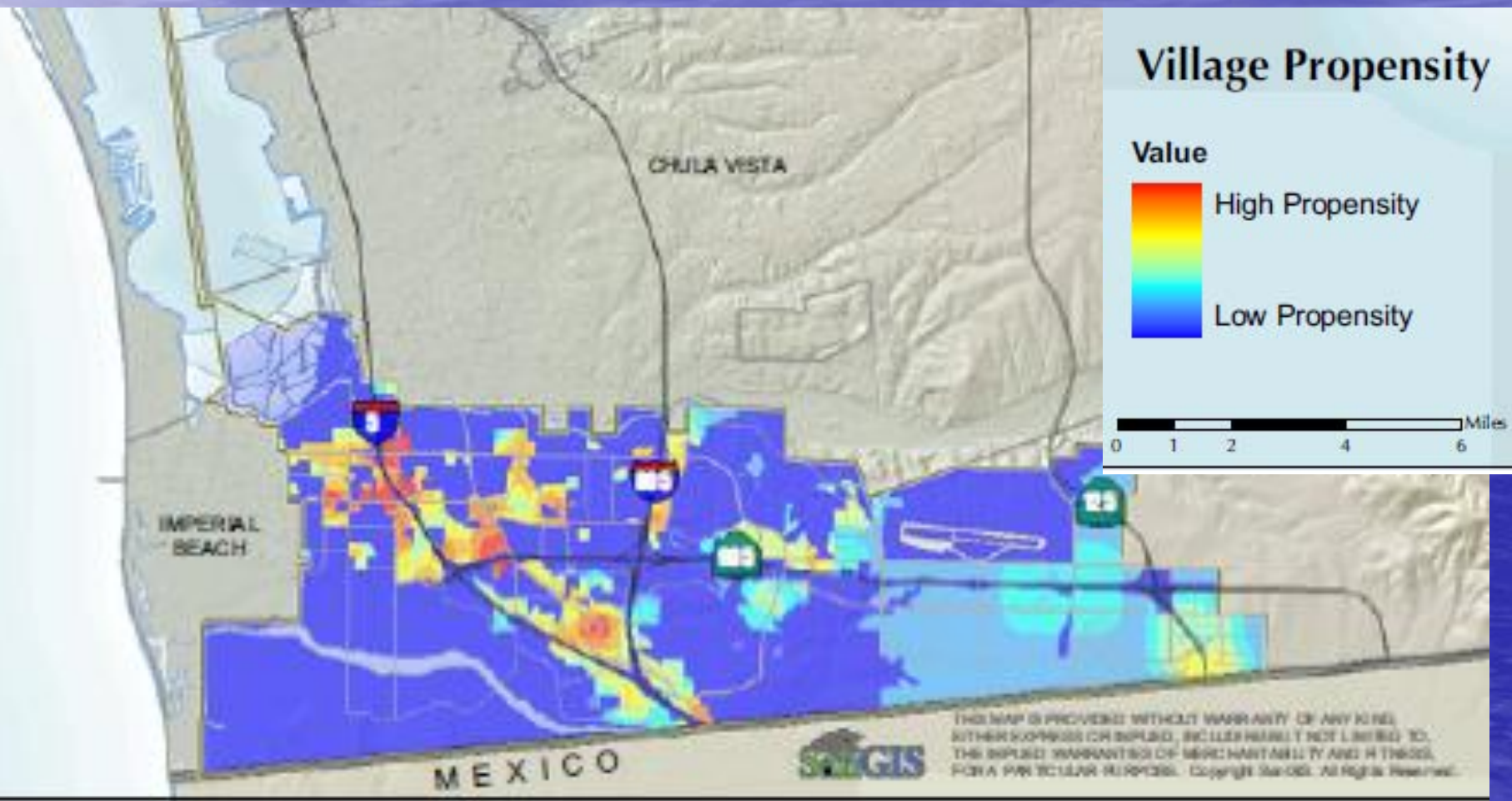
Learn More!

To learn more about all of  
these programs and more  
[www.sdge.com/saveenergy](http://www.sdge.com/saveenergy)

- Programs are funded by California utility customers and administered by San Diego Gas & Electric® (SDG&E) under the auspices of the California Public Utilities Commission.
- For some programs, SDG&E awards contracts to a third-party for implementation. Customers who choose to participate in these programs are not obligated to purchase any additional services offered by the contractor.
- For rebate and incentive programs, program funds will be allocated on a first-come, first-served basis, until funds are no longer available. The selection, purchase, and ownership of goods and services are the sole responsibility of the customer. SDG&E makes no warranty, whether express or implied, including warranty of merchantability or fitness for any particular purpose, use or application of selected goods and services.
- The On-Bill Financing (OBF) program is funded by California utility customers and administered by San Diego Gas & Electric® under the auspices of the California Public Utilities Commission. The OBF program may be modified or terminated without prior notice and is provided to qualified customers on a first-come, first-served basis until program funds are no longer available. Eligibility requirements apply.



# Village Propensity

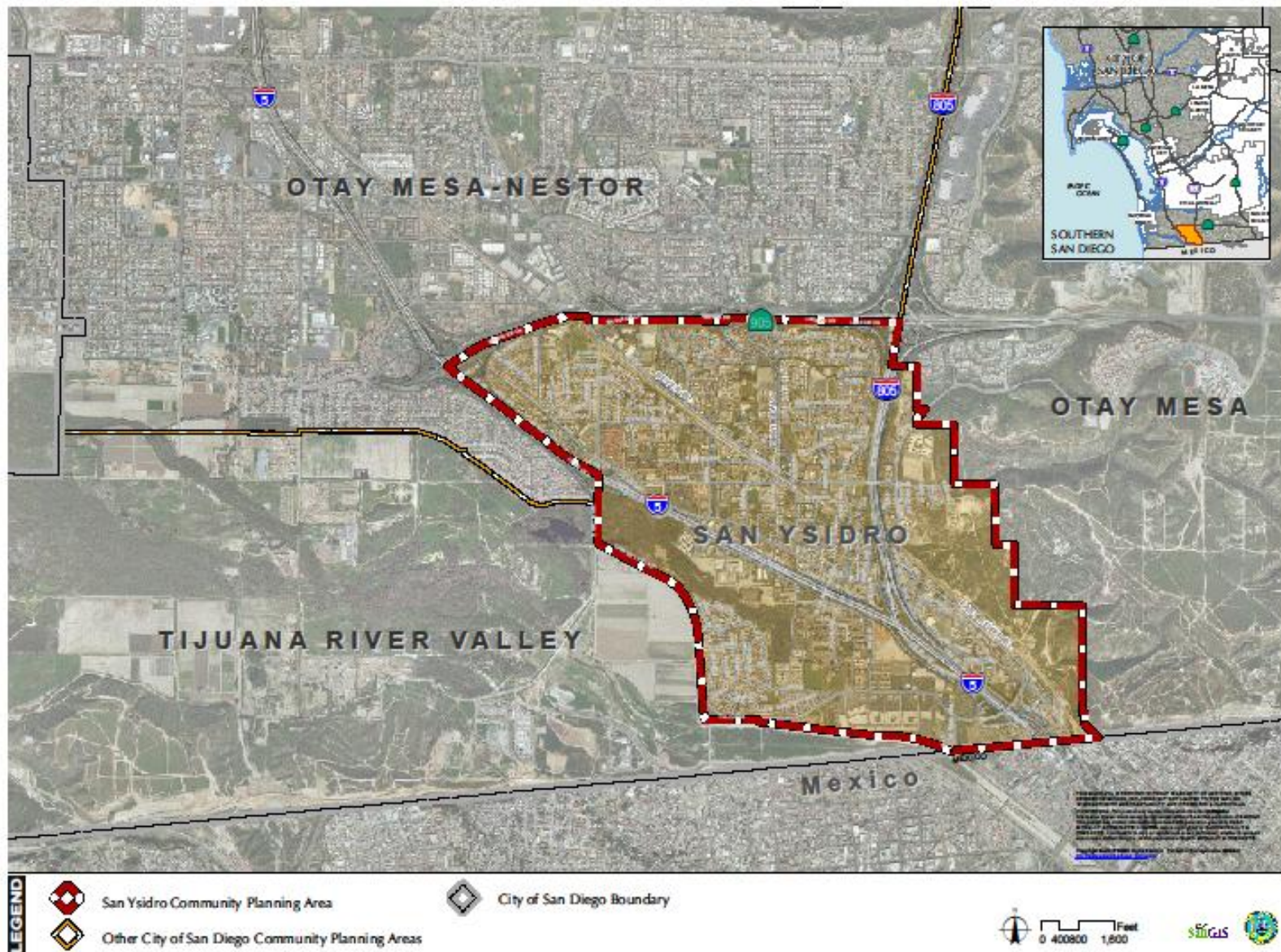




# San Ysidro Community

Vicinity Map

September 2010





# San Ysidro COMMUNITY PLAN UPDATE

OUR LADY OF MT.  
CARMEL CATHOLIC  
CHURCH



HISTORIC SAN YSIDRO



LAS AMERICAS  
PREMIUM OUTLET



MEXICAN/AMERICAN  
BORDER



VIEWS OF SAN YSIDRO



SAN YSIDRO  
HEALTH CENTER



RAILROAD CORRIDOR



SAN YSIDRO  
COMMUNITY PARK





# General Plan Water Policies

## Public Facilities and Conservation Elements



- Water Conservation and management
  - Water conservation measures
  - Watershed protection
  - Groundwater and surface water resources management
  - Manage floodplains
- Coordinated Planning
  - State and regional water resource planning
  - Water and land use planning
  - Development project review
  - Plan for emergencies and climate change impacts
- Public Education



# Planning Considerations

- Proximity to Land Port of Entry
- Excellent trolley access
- Intermodal Transit Center
- Improve connectivity throughout community
- Pilot Village location
- Environmental Justice

For more information please visit:  
<http://www.sdge.com/SaveEnergy>

Or call:  
Energy Information Center (EIC)  
1-800-644-6133

Thank You!