

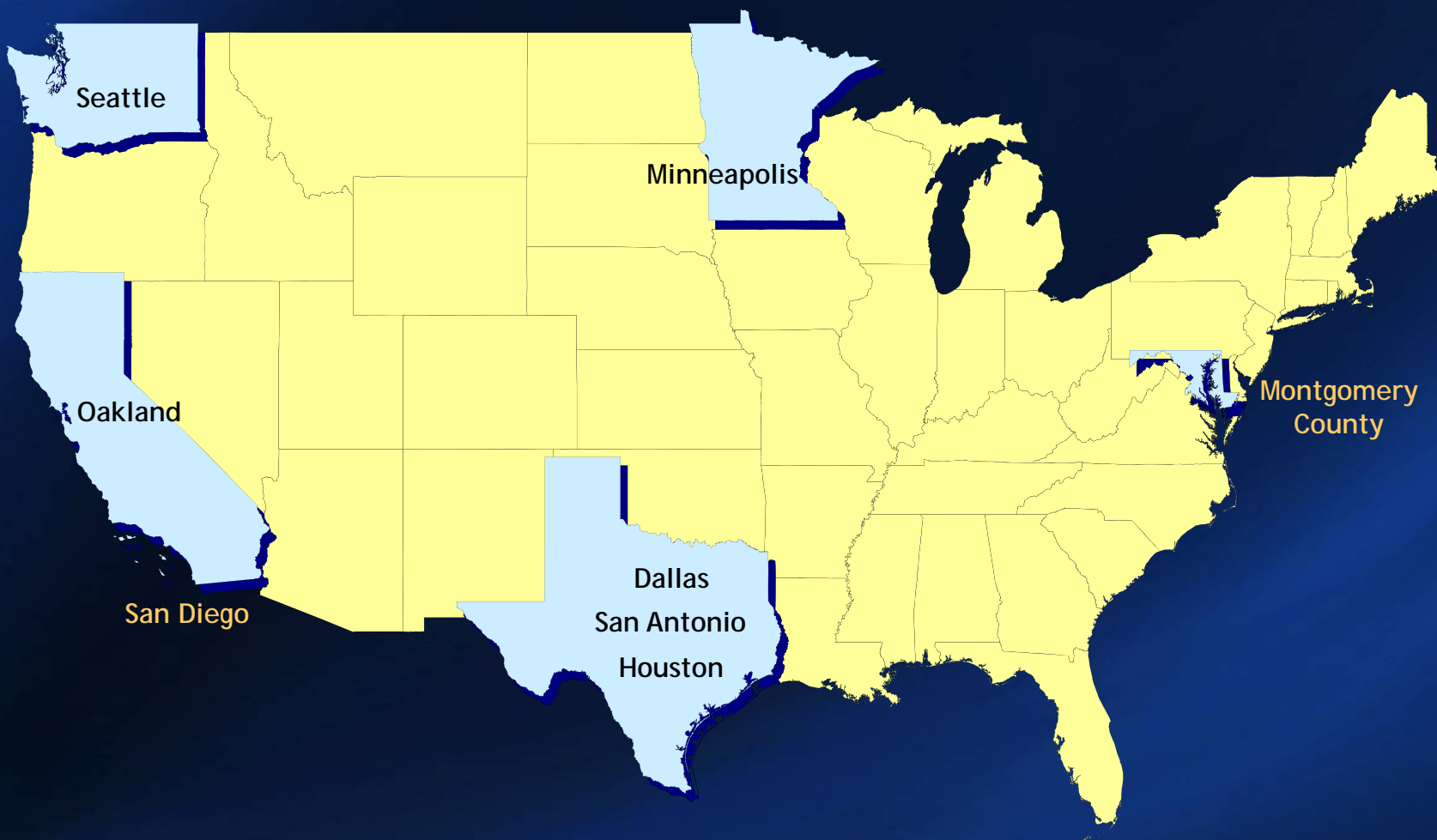


I-15 Integrated Corridor Management Project Update: Using Intelligent Transportation Systems





USDOT ICM Selected Eight Pilot Sites





What is Integrated Corridor Management (ICM)?

- Application of advanced tools
- Proactive, joint, multimodal infrastructure management
- Maximize existing infrastructure
- Assets managed together as a corridor

Partners

- USDOT
- Battelle
- SAIC
- Noblis
- The Volpe Center

- SANDAG
- Caltrans
- City of San Diego
- City of Poway
- City of Escondido
- MTS
- NCTD
- California Path



I-15 ICM Project



1 Main Lanes

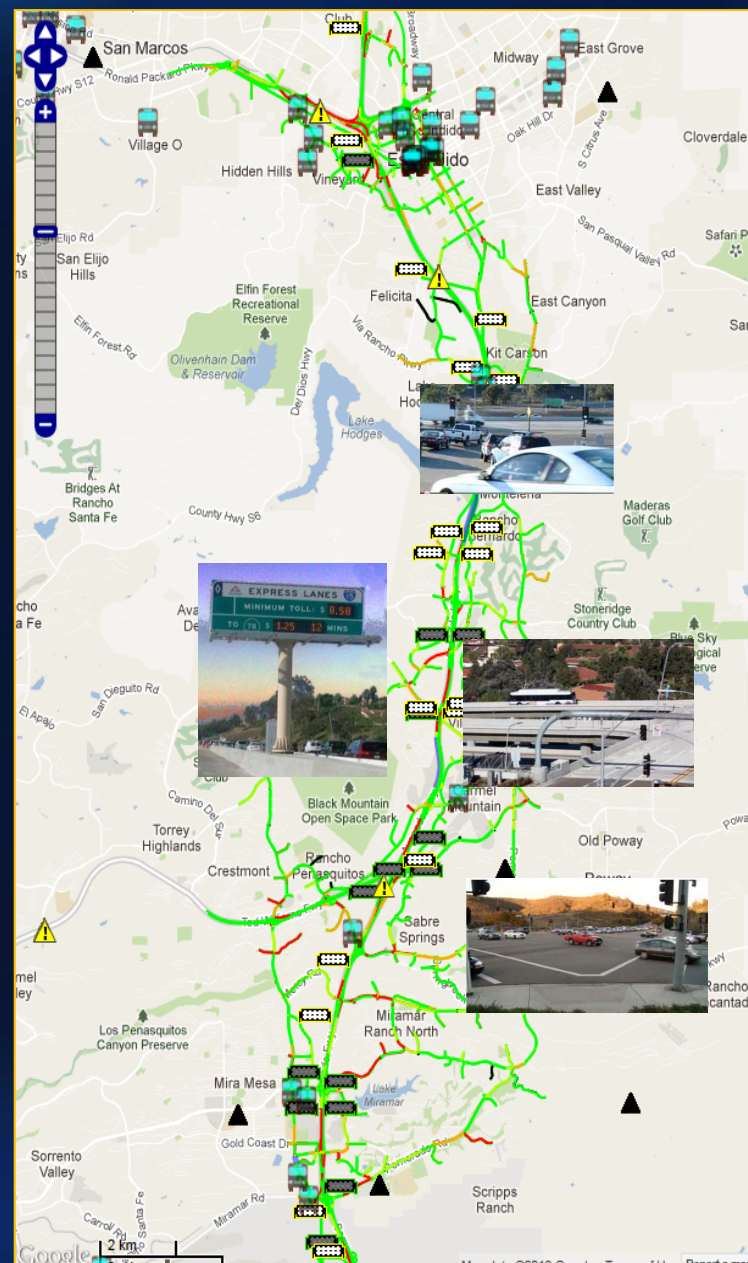
2 Express Lanes

3 DAR

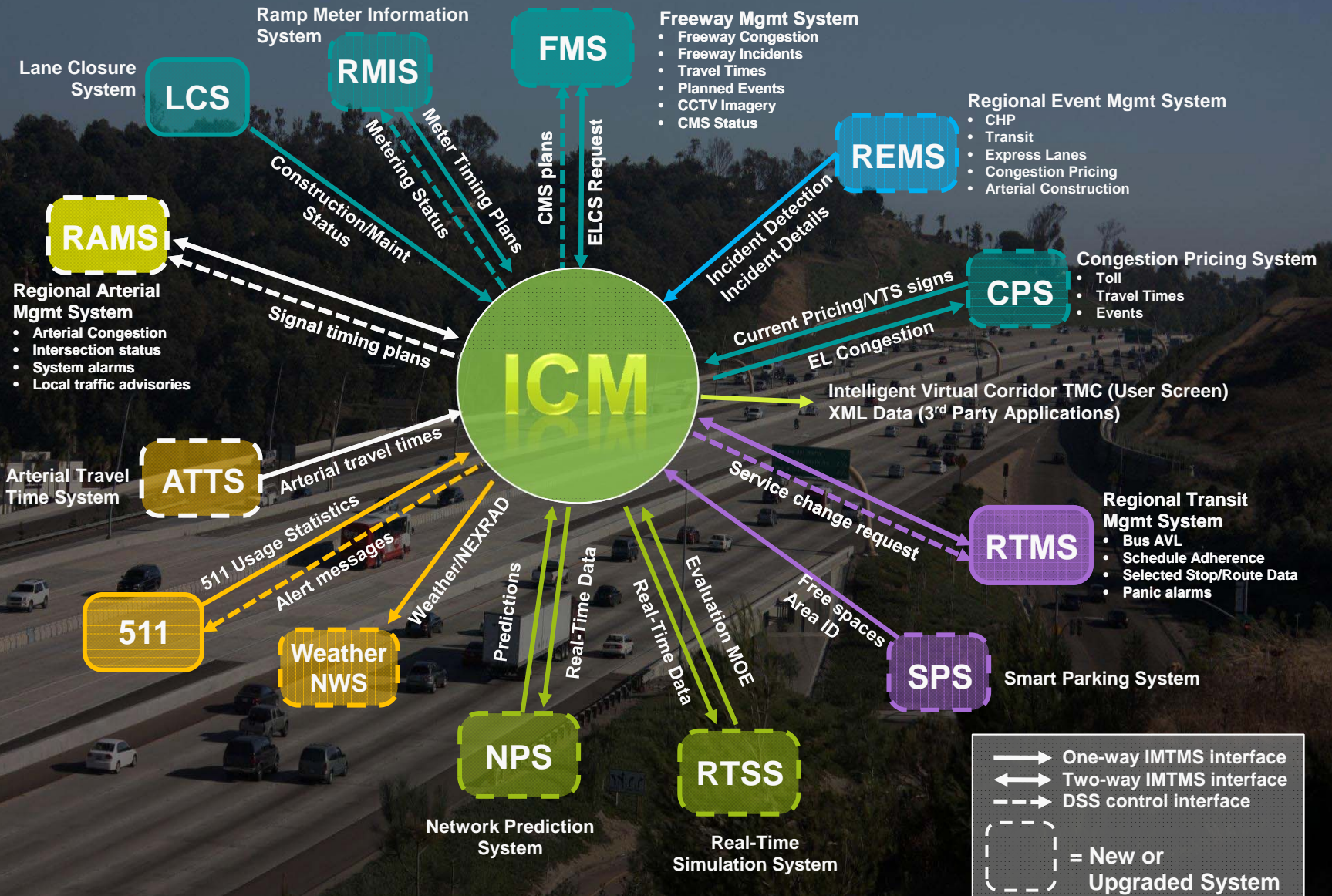
4 BRT Stations

5 Arterial Network

ICM is about management of a corridor. Management implies more than monitoring. Management implies planning for, and responding to, what is happening across all networks.

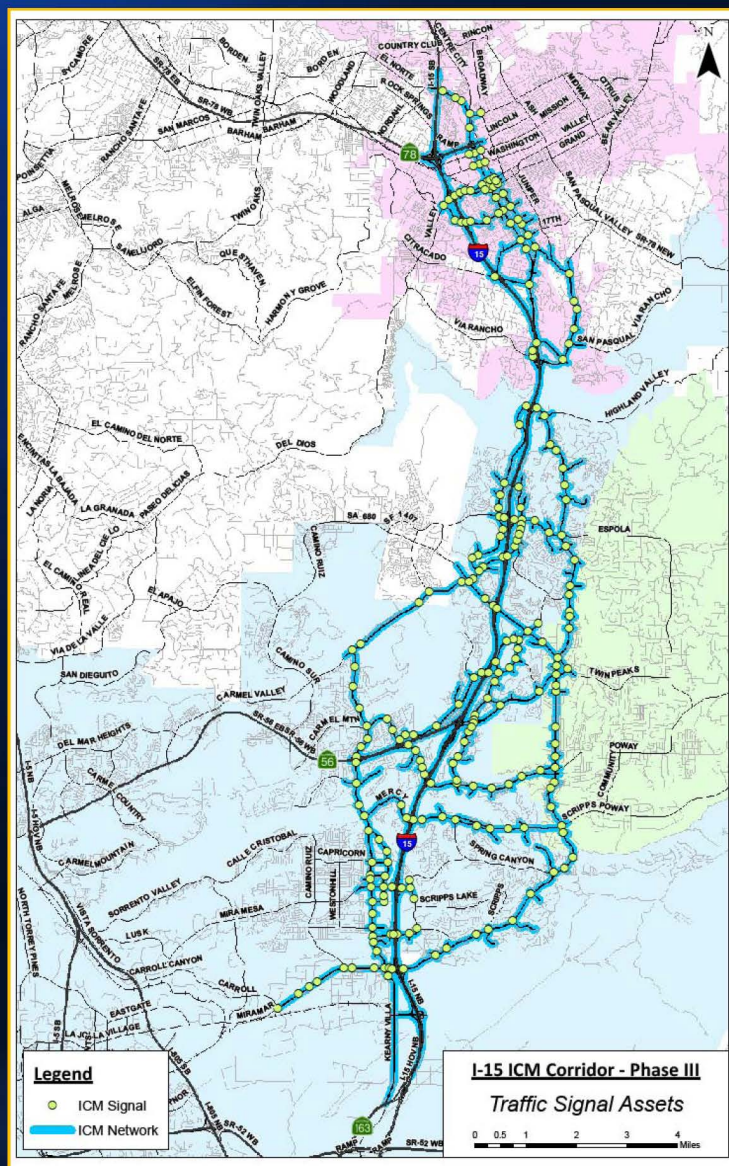


TSM/ITS Management Tool Box





I-15 ICM Arterial Detection and Signal Systems



ACTIVE ROUTING ARTERIALS

Bernardo Center Drive
Black Mountain Road
Camino del Norte
Carmel Mountain Road
Carmel Valley Road
Carroll Canyon Road
Kearny Villa Road
Miramar Road
Mira Mesa Road
Mercy Road
Pomerado Road
Poway Road
Rancho Bernardo Road
Rancho Carmel Drive
Rancho Penasquitos Blvd
Sabre Springs Pkwy
Scripps-Poway Pkwy
Ted Williams Pkwy
West Bernardo Pkwy

Legend

ICM Arterial Segments - Active Routing
ICM Network Segments

I-15 ICM Corridor - Phase III
City of San Diego

0 0.5 1 2 3 4 Miles



I-15 ICM Project Will Achieve

Integrating highway, arterial, and transit operations for improved corridor performance

- Provide the tools to:
 - Optimize corridor
 - Improve use of existing infrastructure – maximize capacity
 - Minimize congestion – coordinated multi-modal actions



Expected Benefits of the I-15 ICM Project

- Enhanced traveler information
- Improve reliability
- Reduce fuel consumption
 - 325,000 gallons of fuel saved annually
- Reduce emissions
 - 3,057 tons of emissions saved annually
- 10-year benefit of \$94 million
- General benefit – costs from 10:1 to 25:1



Current ICM Work Efforts/Progress

- 2010 – 2013 design and build ICM
- ICM system deployment schedule
 - March – May 2013: ICM system assessment
 - June – August 2013: ICM system enhancements
 - Sept. 2013: ICM system automation
 - On-going commuter input
- ICM federal grant through December 2014