

MIRAMAR RANCH NORTH PLANNING COMMITTEE (MRNPC)

MEETING AGENDA

Tuesday, September 2, 2014 at 7:00 pm

Scripps Ranch Information Center, 11885 Cypress Canyon Road
San Diego, CA 92131

7:00 p.m. Call to Order

1. Introductions
2. Public Comment – *2 Minutes per speaker*
3. Modifications to the Agenda – *agenda approval*

7:10 p.m. Communications

1. City Council – *Tiffany Vinson*
2. Federal / State / County / Caltrans / City of SD Planning Dept.
3. Scripps Miramar Ranch Planning Group (SMRPG) - *Wally Wulfeck*
4. Scripps Ranch Civic Association (SRCA) - *Bob Ilko*

7:20 p.m. Presentations / Discussion / Action Items: (P / D / A)

1. New member election – Tom Ward (D/ A – 10 min.)
2. Public Facilities Financing Plan (PFFP) – *Angela Abeyta* (P/ D/ A – 30 min.)
3. Speed limit change on Stonebridge Pkwy – (D/ A – 10 min.)
4. SDG&E Sycamore-PQ 230 kV Transmission Line Project – (D/ A – 15 min.)
5. Stonebridge planning group proposal – *Jan Kane* (P/ D – 10 min.)

8:45 p.m. Consent Agenda

1. Approval of minutes – minutes of the following meetings will be approved by unanimous consent unless pulled for discussion: **August 5, 2014**

8:50 p.m. Committee Reports

1. Chair & CPC Report – *Lorayne Burley*
2. MRN MAD – *Jan Kane*
3. Public Facilities Financing Plan (PFFP) – *Michelle Abella-Shon*
4. Schools – *Lorayne Burley/Jan Kane*
5. YMCA, Open Space, Parks & Recreation – *Open*
6. Round Table

9:00 p.m. Adjournment

Note: There are no items of business scheduled for the October 2014 meeting.
Our next meeting is scheduled for Tuesday, November 4th.

Times shown are approximate only. The order of items taken may be different.

If you have questions or comments concerning MRNPC, please voice them during the “Public Comment” at the beginning of our meeting. You may also contact Chair, Lorayne Burley at MRNPCchair@scrippsranch.org or MRNPC’s assigned Community Planner, Tony Kempton at KemptonT@sandiego.gov. Get updated news and information at www.scrippsranch.org/mrnpc.

“GET INVOLVED AND HAVE A SAY IN MIRAMAR RANCH NORTH”

The public is invited to voice its opinion on community planning related issues.

MRNPC Chair's Report for September 2014

Fellow MRNPC members,

On the agenda this month we have:

(#1) New member elections – Tom Ward (D/A item)

Tom has documented attendance at two meetings (March 2014 & May 2014) of the MRNPC in the past 12 scheduled meetings.

(#2) Public Facility Financing Plan (PFFP) review (P/D/A item)

The MRN PFFP Manager, Ms. Angela Abeyta, will provide the opportunity to hear a brief introduction/history and then discuss the MRN PFFP plan and ask any questions. Attention will be directed to the MRN Development Agreement Fund, the origin/history, examples of past expenses and current balances.

Information for review:

City of San Diego PFFP Department website FAQ: <http://www.sandiego.gov/facilitiesfinancing/faq/index.shtml>

City of San Diego PFFP COW: <http://www.sandiego.gov/planning/community/resources/cow/pdf/ff.pdf>

The MRN PFFP: <http://www.sandiego.gov/facilitiesfinancing/pdf/plans/mrnpffpfv.pdf>

(#3) Speed limit change on Stonebridge Parkway (SPkwy) between Old Creek Rd and Cobble Creek Ln (D/A item)

MRNPC has been asked by the City of San Diego Traffic Engineering Dept. to make a recommendation regarding the proposed speed limit change, from 35mph to 30mph, on the SPkwy roadway segment between Old Creek Road and Cobble Creek Lane. A recent speed survey concluded that the roadway segment speed, for the eastbound and westbound directions of traffic, can be lowered to 30 miles per hour in order to remain radar enforceable. The City recommends changing the speed limit in both directions to 30 miles per hour.

Findings are as follows:

1. The St. Gregory the Great school (PreK – 8th grade) and a neighborhood park are along the SPkwy roadway segment in question.
2. The Scripps Miramar Ranch Planning Group (SMRPG) voted (15-0-0) to keep the speed limit the same (35mph) since the average speed is 35 mph at the June 5th 2014 meeting.
3. At approx ¼ mile east on Stonebridge Parkway, placement of stop-sign(s)/crosswalks/traffic calming near or at the new Sycamore Canyon Park is pending.

Information for review:

Letter from City of San Diego Traffic Engineering - attached

Radar survey sheet - attached

Aerial image of SPkwy at school between Old Creek Rd and Cobble Creek Lane – attached

Aerial image of SPkwy at new park between Stonecroft Terrace and Stockwood Cove – attached

(#4) SDG&E Sycamore-Penasquitos 230-kV Transmission Line Project (D/A item)

The public scoping period for the San Diego Gas & Electric Sycamore-Penasquitos 230-kV Transmission Line Project began on Monday, August 18th and ends on Tuesday, September 16th. All comments on potential environmental issues and potential alternatives to the proposed project during the scoping are encouraged to be submitted. MRNPC will consider submitting written scoping comments. Otherwise members can submit separately. Lorayne and Wally Wulfeck (Chair, SMRPG) attended the August 25th scoping meeting.

The impacts for the MRN community are along Segment A, Sycamore Canyon Substation to Carmel Valley Road, of the project. The Segment A project elements consist of:

- 8.31 mile long 230-kV overhead transmission line along existing alignment locations
- Installations of 36 double-circuit 230-kV and 2 138-kV tubular steel poles
- Relocation of 2 existing 138-kV transmission lines to the new tubular steel poles

- Removal of 42 wood H-frame structures, two tubular steel poles, one double-circuit cable pole and two single-circuit wood mono poles

In sum, the project along Segment A will install 38 tubular poles and remove 47 various poles in existing right-of-way locations.

Information for review prior to the meeting:

Lorayne submitted 4 written comments at the 8/25/14 scoping meeting – attached.

Transmission Line Project information/updates:

http://www.cpuc.ca.gov/Environment/info/panoramaenv/Sycamore_Penasquitos/index.html

<http://www.scrippsrancho.org/committees/advisory-committees/mrnpc.html>

(#5) Stonebridge Community Planning Group (CPG) proposal (P/D item)

Jan Kane plans to host a meeting on Wednesday, August 27th to investigate the possibility of forming a Stonebridge/Rancho Encantada planning group and can provide an update on this proposal.

On the Consent Agenda:

Approval of August 5, 2014 minutes

The minutes will be circulated among the members as a PDF document prior to the meeting via email. An opportunity to request corrections will be made in the meeting. Should no such requests be made, the Chair will deem the minutes adopted by unanimous consent.

In other matters:

1. MedImpact/ Sudberry / Watermark Project

MRNPC continues to receive project updates and is working with the developer to monitor and implement the proposed traffic improvements. No updates to report.

2. Administration News

(a) MRNPC meets eight times during the year. The 2014 meeting schedule is: January-Dark, Feb, March, April-Dark, May, June, July-Dark, Aug, Sept, Oct-Dark, Nov, Dec.

(b) Minutes – we are looking for volunteers to help with scribing minutes.

(c) Upcoming training workshop: September 30, 2014 – Advanced CEQA Training; Location: 9192 Topaz Way, Kearny Mesa; Time: 6:00 p.m. - 8:00 p.m.

3. Maintenance Assessment District (MAD)

Received and distributed August 2014 report. Next meeting date for MRN MAD Ad Hoc subcommittee, two weeks prior to the December 2014 MRNPC meeting – **Tuesday, November 18, 2014**

4. Carroll Canyon Commercial Center (CCCC)

MRNPC may consider making a recommendation. The CCCC project resides in our neighboring planning group area – Scripps Miramar Ranch Planning Group (SMRPG aka. SRPG).

5. MRN 20th Anniversary – 5K Fun Run Event – December 6, 2014

The SRCA was awarded a \$10,000 grant to host the 20th Anniversary MRN 5K Fun Run Event on Saturday, December 6, 2014. This event will start at Fire Station 37, ending at Spring Canyon Park. I hope that many of the MRNPC members can participate and/or volunteer to assist with the event.

6. Community Planners Committee (CPC) News

The CPC was dark for the month of August 2014. No report.

7. AT&T Mobility – Sycamore Estates – Project Number 351705

The new AT&T wireless facility in the Rancho Encantada planning area/water tank was presented to the planning commission (PC) on May 29, 2014. The project was continued to June 19, 2014 and at this meeting approved by a vote of 6-0. At the June 19th PC meeting, Rancho Encantada residents voiced concerns with the proximity of the project antennas, lack of noticing to residents in the neighboring area and the incorrect address location for the water tank. The project application has been appealed by Rancho Encantada residents and this item is tentatively scheduled for City Council hearing on September 22, 2014 or September 29, 2014.

8. Mira Mesa Community Planning Group

Lorayne and Wally Wulfeck, Chair, SMRPG attended the Monday, August 18th 2014 MMCPG meeting. Wally presented an update on the CCCC Project. The Medical Marijuana consumer Cooperatives (MMCCs) Conditional Use Permit applications were the hot topic on the agenda. MMCPG made 2 site recommendations and also recommended to the City a strong concern about lack of enforcement, a desire of many committee members to hold off on site recommendations until further information was available and requested that the City be more organized prior to requesting CPG input. More information regarding the MMCPG can be found at: http://www.miramesatowncouncil.org/planning_group.html.

Thank you, MRNPC members, for dedicating your time and service to our community.

Best Regards,

Lorayne Burley

mrnpcchair@scrippsrancho.org

www.scrippsrancho.org/mrnpc.html

MRNPC Chair's Report will become part of the public meeting record.

The Constitution only gives people the right to pursue happiness. You have to catch it yourself.

~~ Benjamin Franklin (1706 – 1790)



THE CITY OF SAN DIEGO

March 5, 2014

TR 333, 079

Wallace H. Wulfeck, Chair
Scripps Miramar Ranch Planning Group
whw@san.rr.com

Dear Mr. Wulfeck:

This is regarding the posted speed limit on Stonebridge Parkway between Old Creek Road and Cobble Creek Lane in the community of Rancho Encantada. Local governments must follow the procedures set by the State of California when setting speed limits on public streets. The California Speed Trap Law (California Vehicle Code Section 40802) requires that the City survey the prevailing speeds on classified streets every seven years in order to keep our speed limits radar enforceable under the provisions of the law.

We have recently surveyed the above segment of Stonebridge Parkway and the results of the study indicate that the existing posted speed limit of 35 miles per hour for the eastbound and westbound directions of traffic can be lowered to 30 miles per hour and remain radar enforceable. Therefore, we will be changing the speed limit in both directions from 35 miles per hour to 30 miles per hour.

It is our practice to notify the community planning groups before changing the speed limits. If you have any questions concerning this action please contact Krista Barnes at (619) 533-3615.

Sincerely,

Biljana Dekic
Associate Traffic Engineer

KB1:bd2:sg

cc: Acting Lieutenant Scott Townsend, San Diego Police Department, Traffic Division
Ty Palusky, Associate Engineer, Traffic Engineering Division

Transportation and Storm Water Department

1010 Second Avenue, Suite 800 • San Diego, CA 92101
Telephone (619) 533-3126 Fax (619) 533-3131

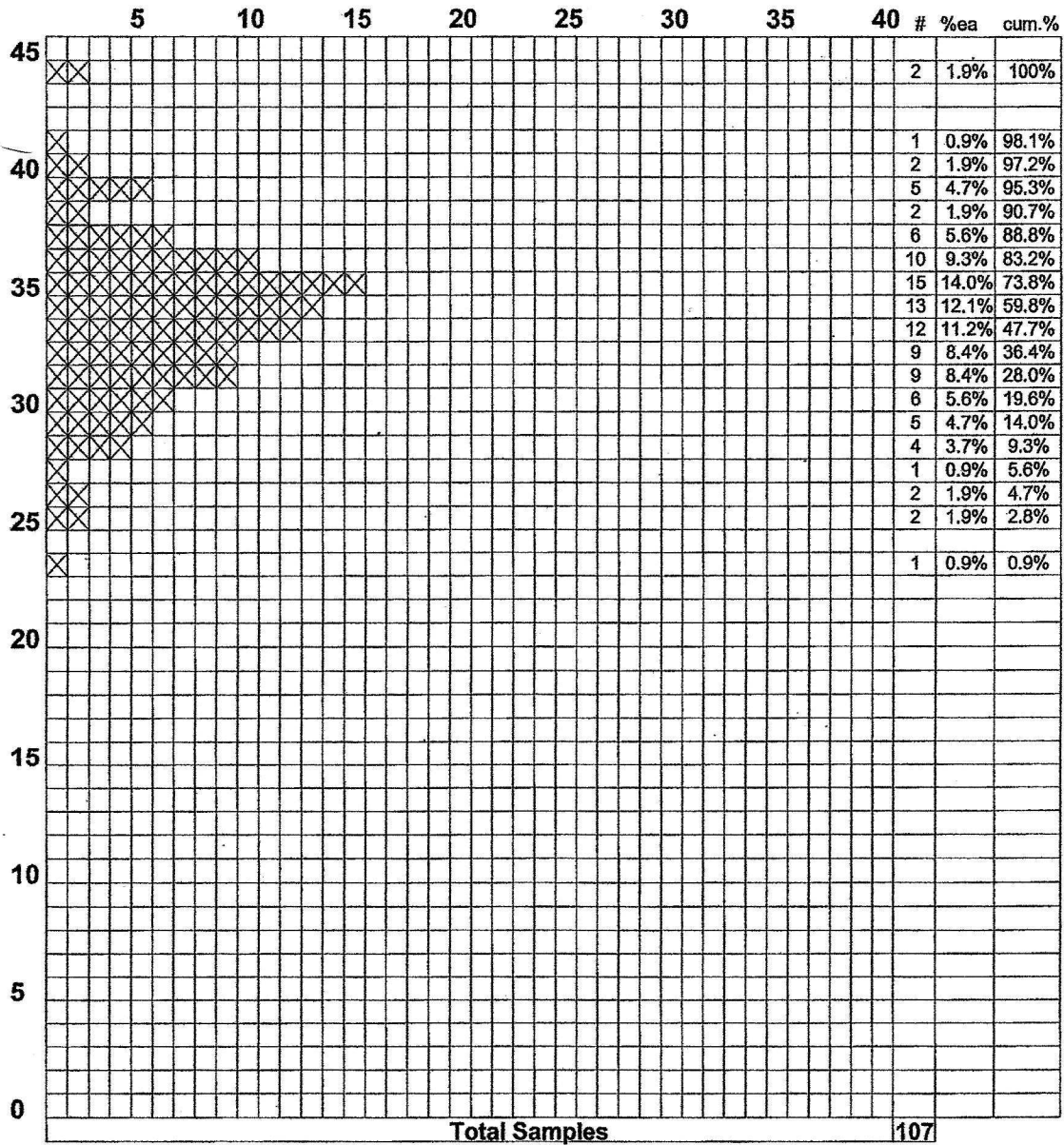


**City of San Diego
Transportation Engineering Division**

Street Name: STONEBRIDGE PY
Limits: OLD CREEK RD (15000) to COBBLE CRK LN

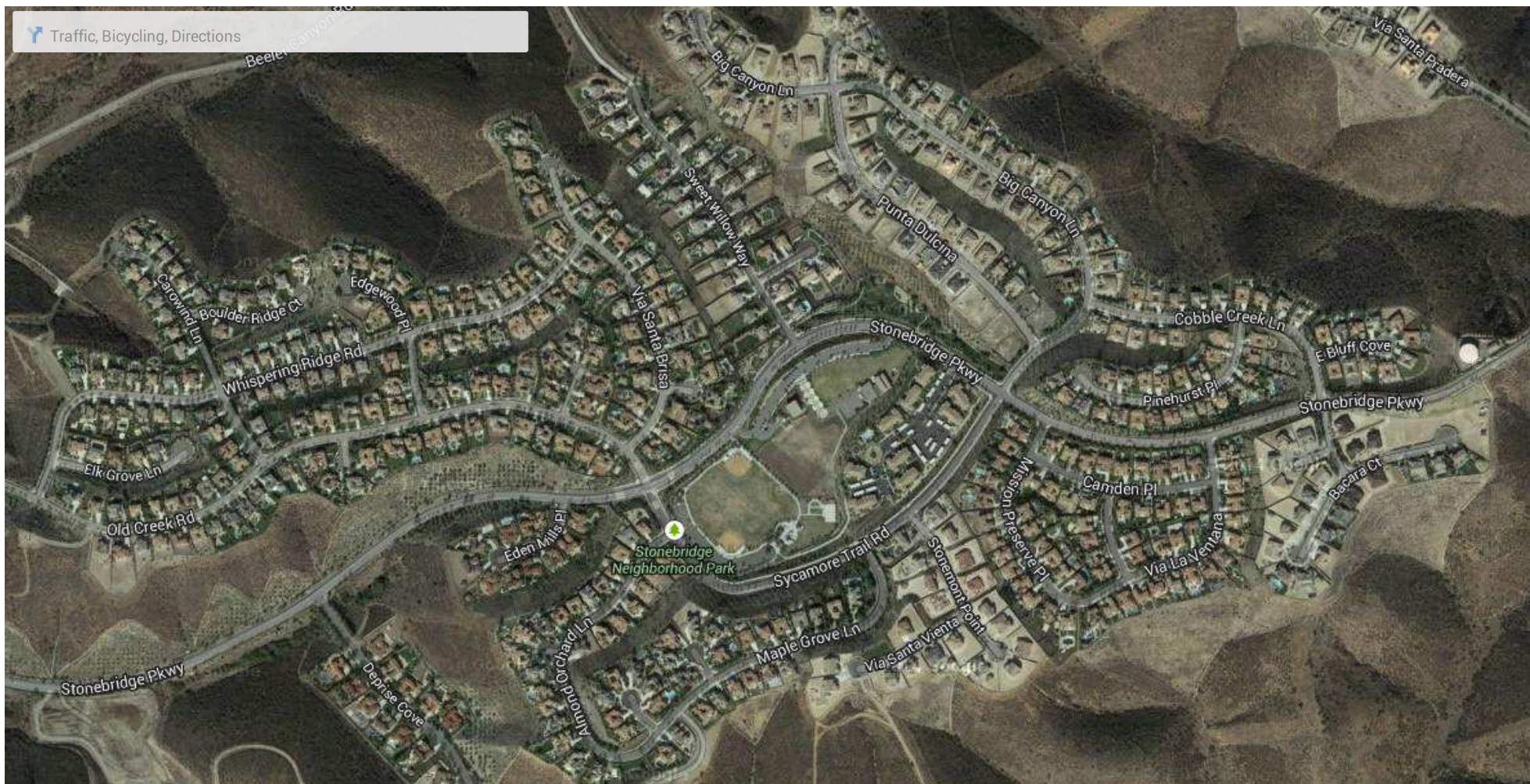
Radar Survey Sheet

X=East/West

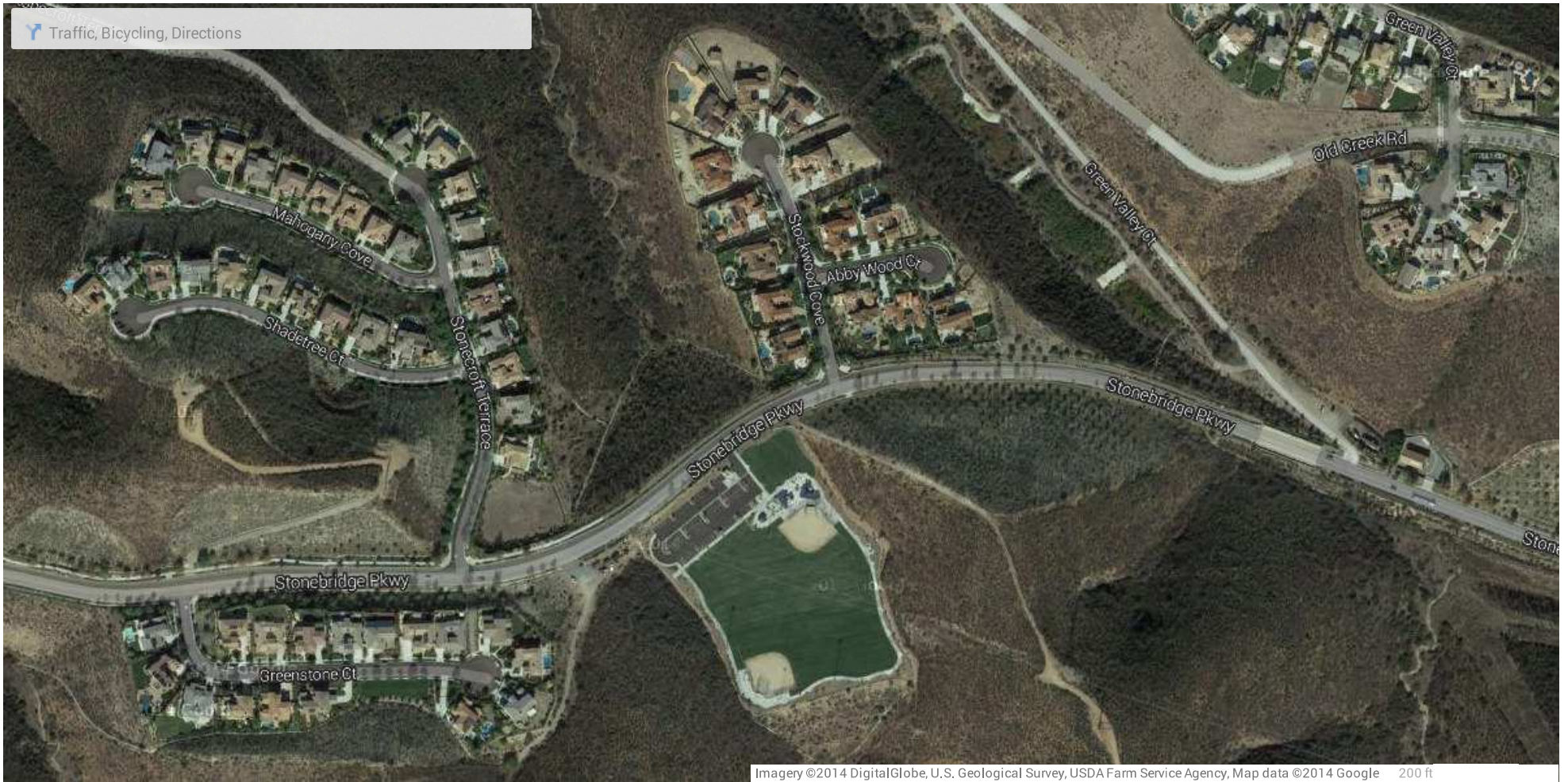


85th Percentile Speed:	<u>36.3</u>	Date of Survey:	<u>7/31/2013</u>	Start Time:	<u>15:00</u>
50th Percentile Speed:	<u>33.2</u>	Weather:	<u>Dry</u>	End Time:	<u>15:34</u>
15th Percentile Speed:	<u>29.2</u>	Road Condition:	<u>Good</u>	Posted Speed:	<u>35</u>
10 MPH Pace:	<u>28- 37</u>	Street Class.:	<u>COLLECTOR - MIN</u>	Observer:	<u>AF</u>
Number in Pace:	<u>89</u>	Conditions not Apparent:	Accident History		
Percent in Pace:	<u>83.2%</u>				

Traffic, Bicycling, Directions



Imagery ©2014 Ches/Spot Image, DigitalGlobe, U.S. Geological Survey, USDA Farm Service Agency, Map data ©2014 Google 500 ft



Scoping comments for the Sycamore-Penasquitos 230-Kilovolt Transmission Line Project - regarding Segment A: Sycamore Canyon Substation to Carmel Valley Road.

1. West end of Scripps Poway Parkway (SPP) commuter traffic

SPP between Cypress Canyon Road and I-15 becomes impacted with moderate to heavy AM/morning and PM/afternoon commuter traffic. SPP is a major truck route between I-15 and R-67 and can be utilized by many large medium and heavy trucks. Medium trucks can include; box, platform, flatbed trucks and recreational vehicles. Heavy trucks can include; concrete transports, cranes, dump trucks, log carriers, semi-trailer/18-wheelers trucks.

2. MedImpact and Watermark Projects

The MedImpact and Watermark Projects are the land development sites, at the southeast corner of Scripps Poway Parkway/Mercy Road and I-15 - the pumpkin patch/Christmas tree lot area, across the street from the Chilis/Wendys/gas station/hotels.

Both projects will utilize approx. 600,000 sq feet of total space for all proposed uses. In comparison: The Forum of Carlsbad is 265,000 sq ft; Otay Ranch Town Center=860,000 sq ft; Westfield UTC = 1,034,600 sq. ft and Westfield North County=1,259,463 sq. ft.

The industrial section of the site, that includes an additional MedImpact office building and a parking structure, is still estimated to start construction in early summer of 2014.

The commercial and retail section of the site, called The Watermark Project, is estimated to start construction at the end of 2015. The Watermark Project includes a six-story office building, five-story hotel, five-story parking structure, two-stories of upscale retail shops and family-oriented dining, a two-story high-end movie theater (for example: Cinepolis or Cinetopia) and a gourmet food market (Whole Foods Market).

The Whole Foods Market agreement was recently confirmed and the developer is actively marketing and leasing the balance of the retail project, but it will be sometime before they have any tenants committed.

Additional project information can be found at: <http://www.scrippsranh.org/community/news/2718-watermark-project-information.html>

<http://www.scrippsranh.org/committees/advisory-committees/mrnpc.html>

3. Elementary school traffic along west end of SPP

Elementary school traffic congestion on SPP during school drop-off in mornings and school pickup in afternoons. Three Scripps Ranch elementary schools contribute to traffic congestion during approx. 8:00-9:00am and 3:00-4:00pm hours.

a) Innovations Academy

website => <http://innovationsacademy.org/>

The start time is 9am (Mon – Fri) and stop time is 3:30pm (Mon – Th) and 12pm (Fri).

Light traffic impact at SPP and Spring Canyon Road

b) Dingemen Elementary

website => <http://dingeman.net/Home>

The start time is 8:30am (Mon – Fri) and the stop time is 3:00pm (Mon,Tues,Wed,Fri) and 12:20pm (Th).

Heavy traffic impact at Spring Canyon Park parking lot for AM/drop-off and PM/pickup.

Heavy traffic impact at SPP and Scripps Creek Drive

c) Ellen Browning Scripps Elementary

website => <http://www.sandi.net/ebscripps>

The start time is 8:15am (Mon – Fri) and the stop time is 3:15pm (Mon,Tues,Wed,Fri) and 12:30pm (Th).

Light traffic impact at SPP and Cypress Canyon Road

Moderate traffic impact at north end of Cypress Canyon Road near the SRCA/SR Community Information Center.

4. Miramar Ranch North (MRN) Maintenance Assessment District (MAD)

The MRN MAD requests notification for impacted landscaping assets, such as planting materials, trees, bushes, landscaping, and irrigation equipment, along Segment A, that resides in the Scripps Ranch Villages/MRN community planning area.

MRN MAD contacts are:

a) Lorayne Burley, Chair MRNPC, mrnpcchair@scrippsranch.org

b) Casey Smith, District Manager, City of San Diego, MADs, CDSmith@saniego.gov

c) Mike Rasmusson, Grounds Maintenance Manager, MRN MAD, MRasmusson@saniego.gov

Lorayne W. Burley

Lorayne Witte Burley

Miramar Ranch North Planning Committee

11223 Walking Fern Cove

San Diego, CA 92131

858-530-2803

mrnpcchair@scrippsranch.org