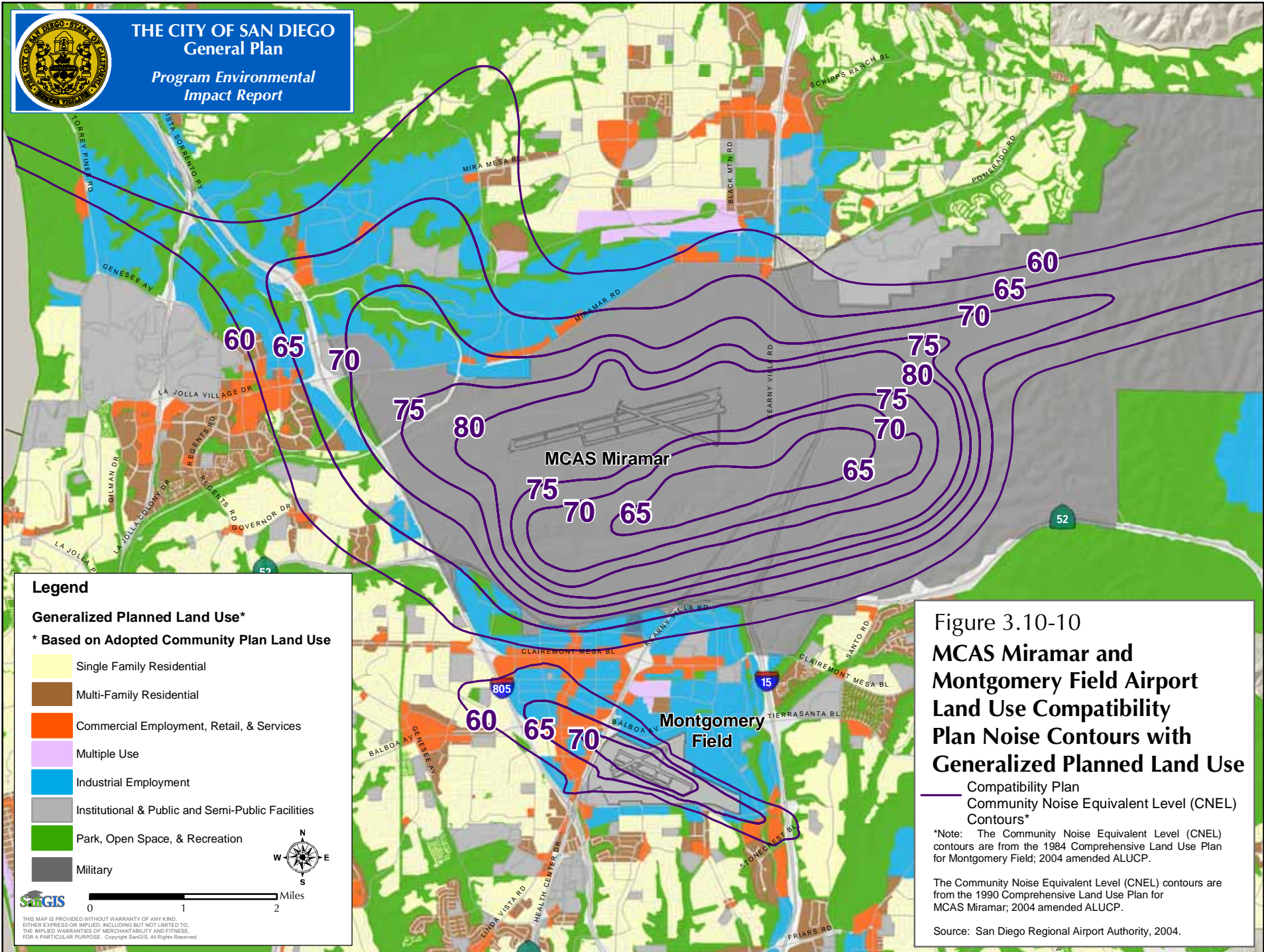




THE CITY OF SAN DIEGO
General Plan
Program Environmental
Impact Report



Legend

Generalized Planned Land Use*
 * Based on Adopted Community Plan Land Use

- Single Family Residential
- Multi-Family Residential
- Commercial Employment, Retail, & Services
- Multiple Use
- Industrial Employment
- Institutional & Public and Semi-Public Facilities
- Park, Open Space, & Recreation
- Military



0 1 2 Miles



THIS MAP IS PROVIDED WITHOUT WARRANTY OF ANY KIND, EITHER EXPRESS OR IMPLIED, INCLUDING BUT NOT LIMITED TO, THE IMPLIED WARRANTIES OF MERCHANTABILITY AND FITNESS FOR A PARTICULAR PURPOSE. Copyright SanGIS. All Rights Reserved.

Figure 3.10-10
MCAS Miramar and
Montgomery Field Airport
Land Use Compatibility
Plan Noise Contours with
Generalized Planned Land Use

— Compatibility Plan
 — Community Noise Equivalent Level (CNEL) Contours*

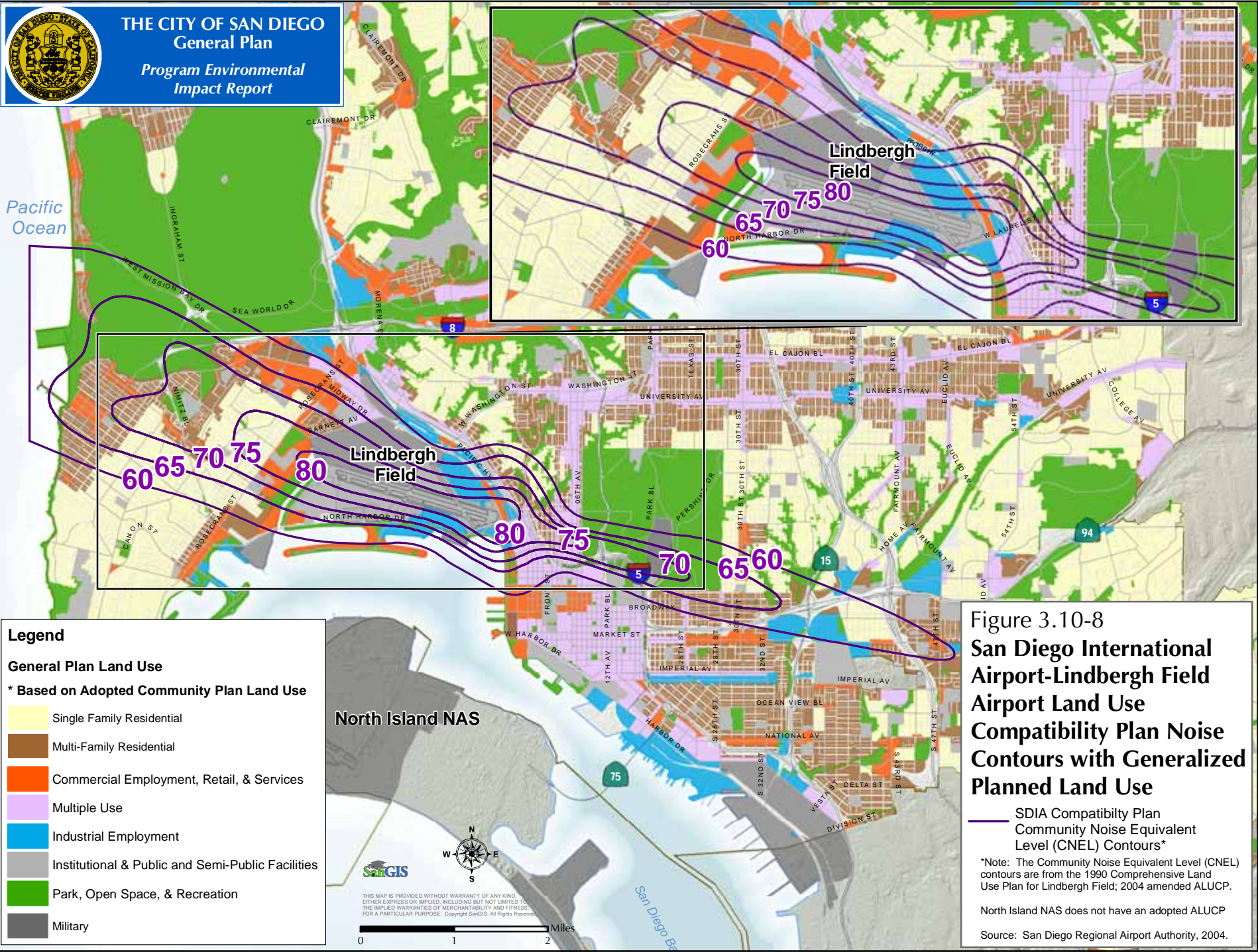
*Note: The Community Noise Equivalent Level (CNEL) contours are from the 1984 Comprehensive Land Use Plan for Montgomery Field; 2004 amended ALUCP.

The Community Noise Equivalent Level (CNEL) contours are from the 1990 Comprehensive Land Use Plan for MCAS Miramar; 2004 amended ALUCP.

Source: San Diego Regional Airport Authority, 2004.



THE CITY OF SAN DIEGO
General Plan
*Program Environmental
 Impact Report*





Legend

Generalized Planned Land Use*

* Based on Adopted Community Plan Land Use

- Single Family Residential
- Multi-Family Residential
- Commercial Employment, Retail, & Services
- Multiple Use
- Industrial Employment
- Institutional & Public and Semi-Public Facilities
- Park, Open Space, & Recreation
- Agriculture
- Military

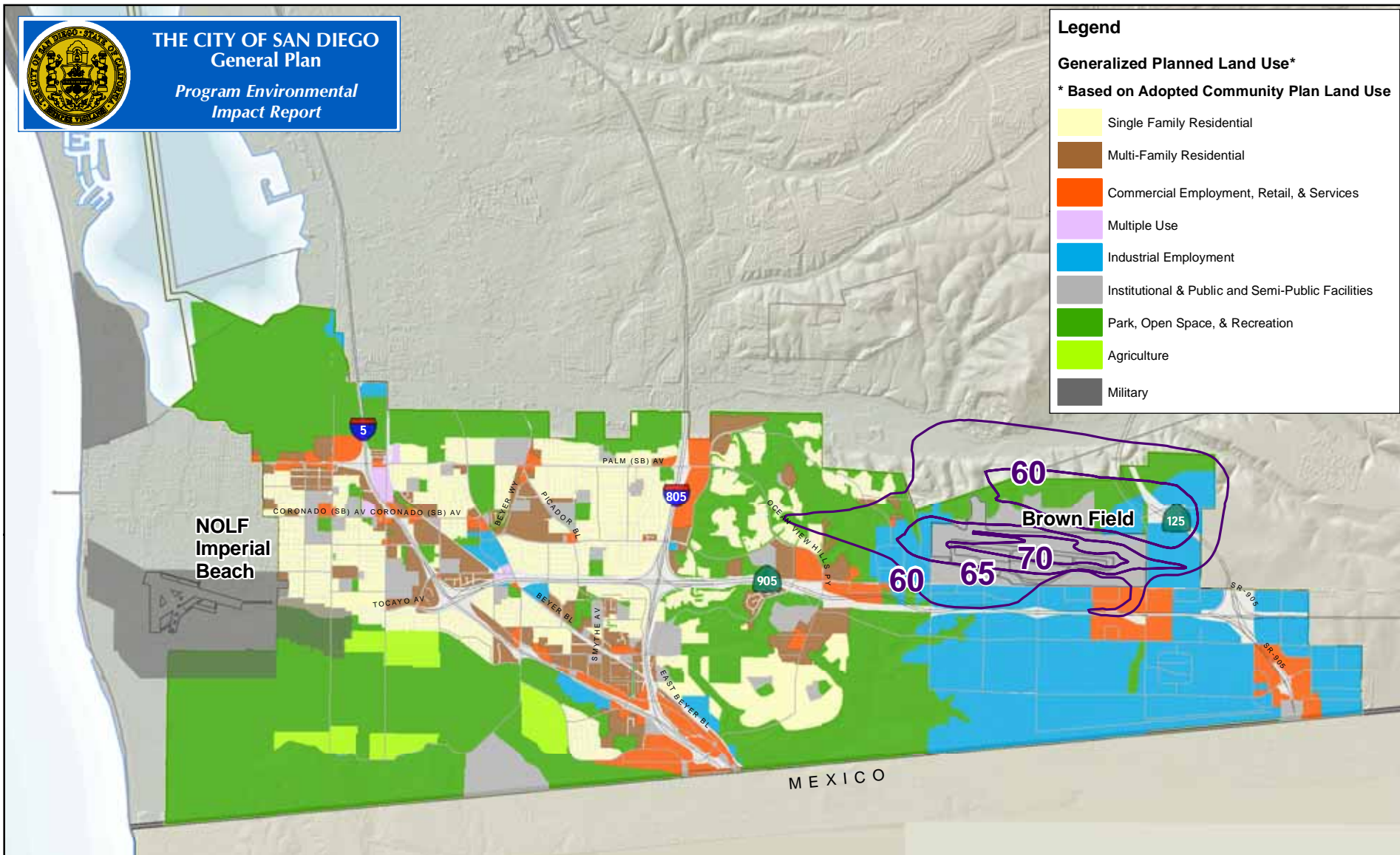


Figure 3.10-9

**Brown Field Municipal Airport
Land Use Compatibility Plan Noise Contours
with Generalized Planned Land Use**

— Brown Field Compatibility Plan
Community Noise Equivalent Level (CNEL) Contours*

*Note: The Community Noise Equivalent Level (CNEL) contours are from the 1981 Comprehensive Land Use Plan for Brown Field; 2004 amended ALUCP.

Naval Outlying Field Imperial Beach does not have an adopted ALUCP.

Source: San Diego Regional Airport Authority, 2004.



0 1 2 Miles



THIS MAP IS PROVIDED WITHOUT WARRANTY OF ANY KIND, EITHER EXPRESS OR IMPLIED, INCLUDING BUT NOT LIMITED TO, THE IMPLIED WARRANTIES OF MERCHANTABILITY AND FITNESS, FOR A PARTICULAR PURPOSE. Copyright SanGIS. All Rights Reserved.