



THE CITY OF SAN DIEGO
General Plan

Program Environmental
Impact Report

Pacific Ocean

San Diego Bay

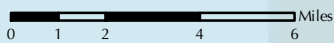
MEXICO

Figure 3.5-1

Oil & Gas Wells

Drilling-Idle

2 Plugged & Abandoned Dry Hole



THIS MAP IS PROVIDED WITHOUT WARRANTY OF ANY KIND, EITHER EXPRESS OR IMPLIED, INCLUDING BUT NOT LIMITED TO, THE IMPLIED WARRANTIES OF MERCHANTABILITY AND FITNESS, FOR A PARTICULAR PURPOSE. Copyright SanGIS. All Rights Reserved.



THE CITY OF SAN DIEGO
General Plan

Program Environmental
Impact Report

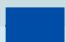
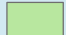
Pacific Ocean

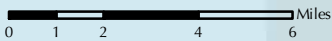
San Diego Bay

MEXICO

Figure 3.5-2

Flood Hazard Areas

-  100 Year Floodplain
-  Dam Inundation Areas



THIS MAP IS PROVIDED WITHOUT WARRANTY OF ANY KIND, EITHER EXPRESS OR IMPLIED, INCLUDING BUT NOT LIMITED TO, THE IMPLIED WARRANTIES OF MERCHANTABILITY AND FITNESS, FOR A PARTICULAR PURPOSE. Copyright SanGIS. All Rights Reserved.



THE CITY OF SAN DIEGO
 General Plan
 Program Environmental
 Impact Report

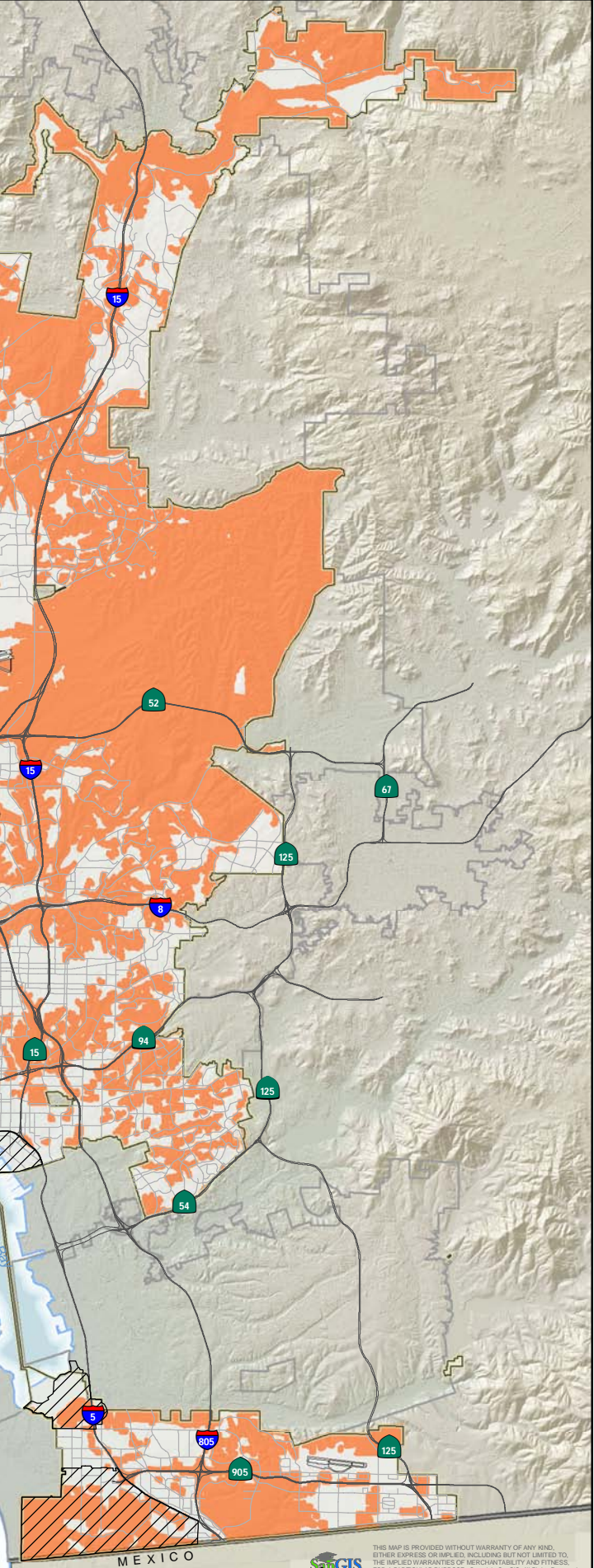
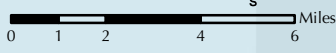
Pacific Ocean

Figure 3.5-3

High Fire Risk Areas

- High Fire Risk Areas
- Coastal Zone

(Includes 300 foot buffer area beyond zone II)



THIS MAP IS PROVIDED WITHOUT WARRANTY OF ANY KIND, EITHER EXPRESS OR IMPLIED, INCLUDING BUT NOT LIMITED TO, THE IMPLIED WARRANTIES OF MERCHANTABILITY AND FITNESS FOR A PARTICULAR PURPOSE. Copyright SanGIS. All Rights Reserved.

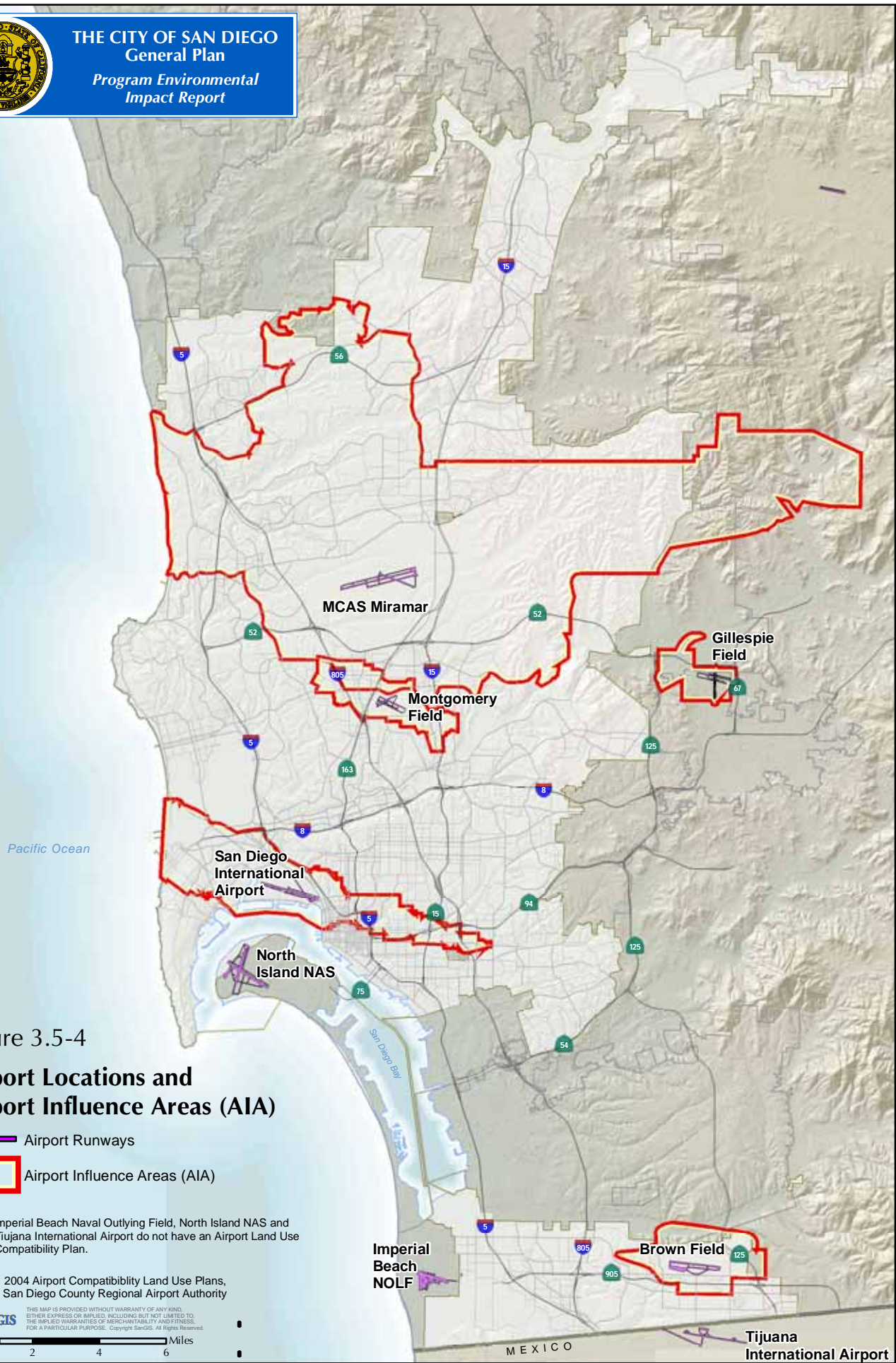




Figure 3.5-4
Airport Locations and
Airport Influence Areas (AIA)

-  Airport Runways
-  Airport Influence Areas (AIA)

Note: Imperial Beach Naval Outlying Field, North Island NAS and Tijuana International Airport do not have an Airport Land Use Compatibility Plan.

Source: 2004 Airport Compatibility Land Use Plans, San Diego County Regional Airport Authority