

Figure 3.5-7
Brown Field Municipal Airport
and Naval Outlying Field Imperial Beach
Safety Areas

Safety Areas (Brown Field)

Runway Protection Zone

Airfields

Property Boundary

Accident Potential Zones (NOLF Imperial Beach)

Accident Potential Zone 1

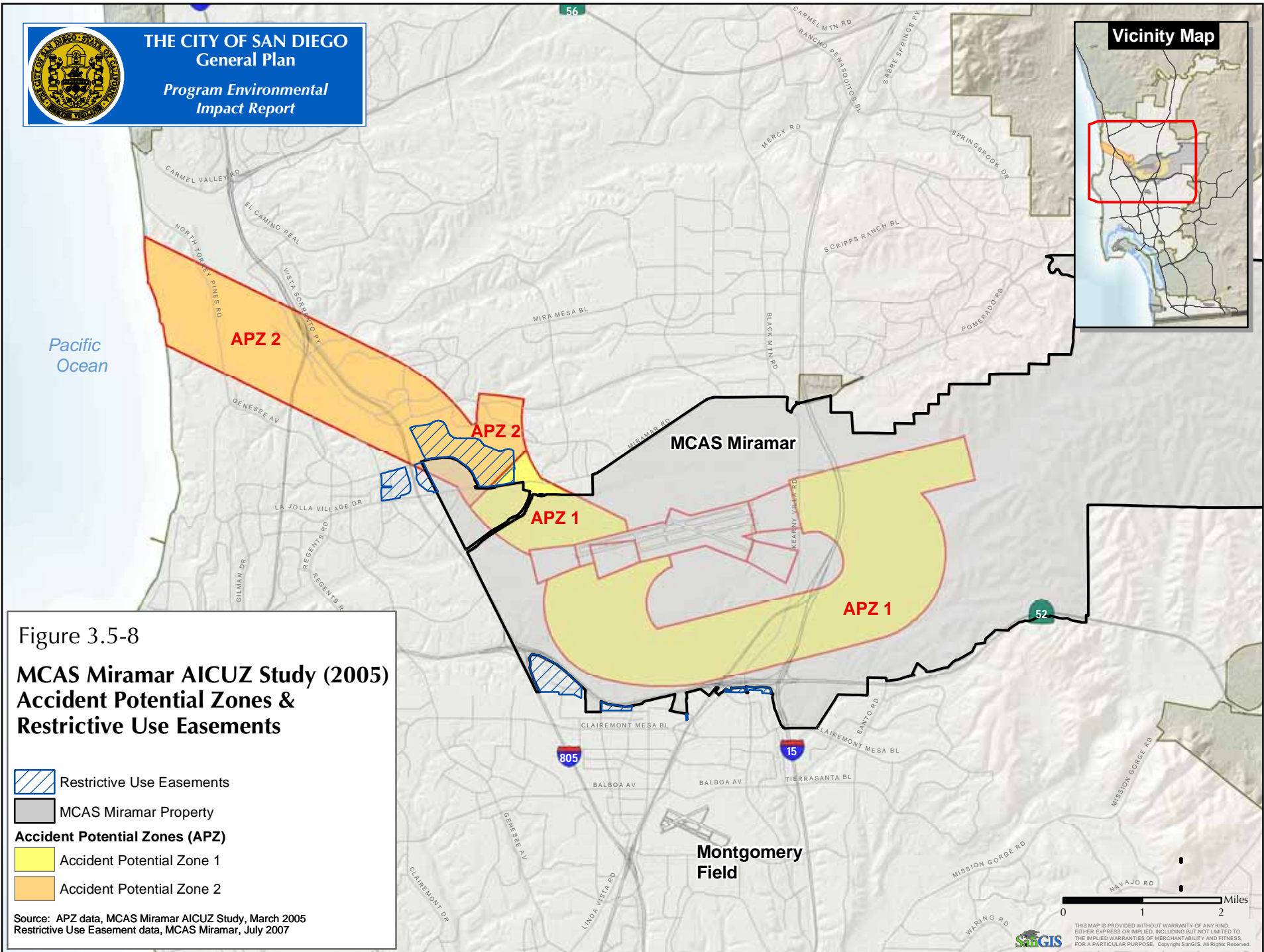
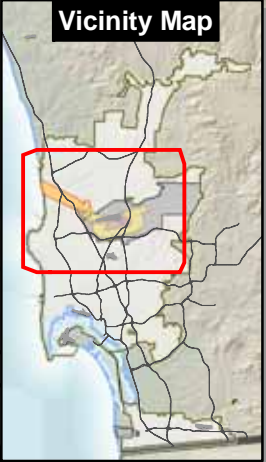
Accident Potential Zone 2

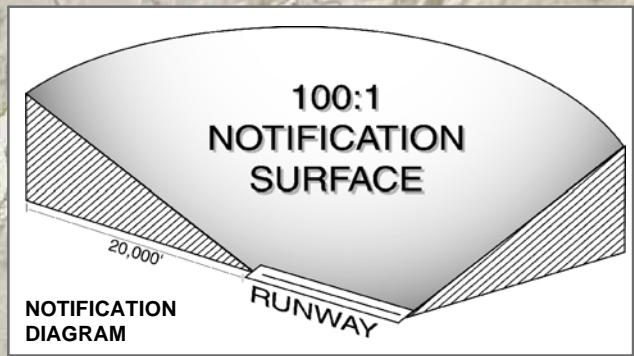


THIS MAP IS PROVIDED WITHOUT WARRANTY OF ANY KIND, EITHER EXPRESS OR IMPLIED, INCLUDING BUT NOT LIMITED TO, THE IMPLIED WARRANTIES OF MERCHANTABILITY AND FITNESS, FOR A PARTICULAR PURPOSE. Copyright SanGIS. All Rights Reserved.

Sources: Air Installation Compatible Use Zone Study, 1989, United States Navy.

Adopted 2004 Airport Land Use Compatibility Plan, San Diego County Regional Airport Authority.





Pacific Ocean

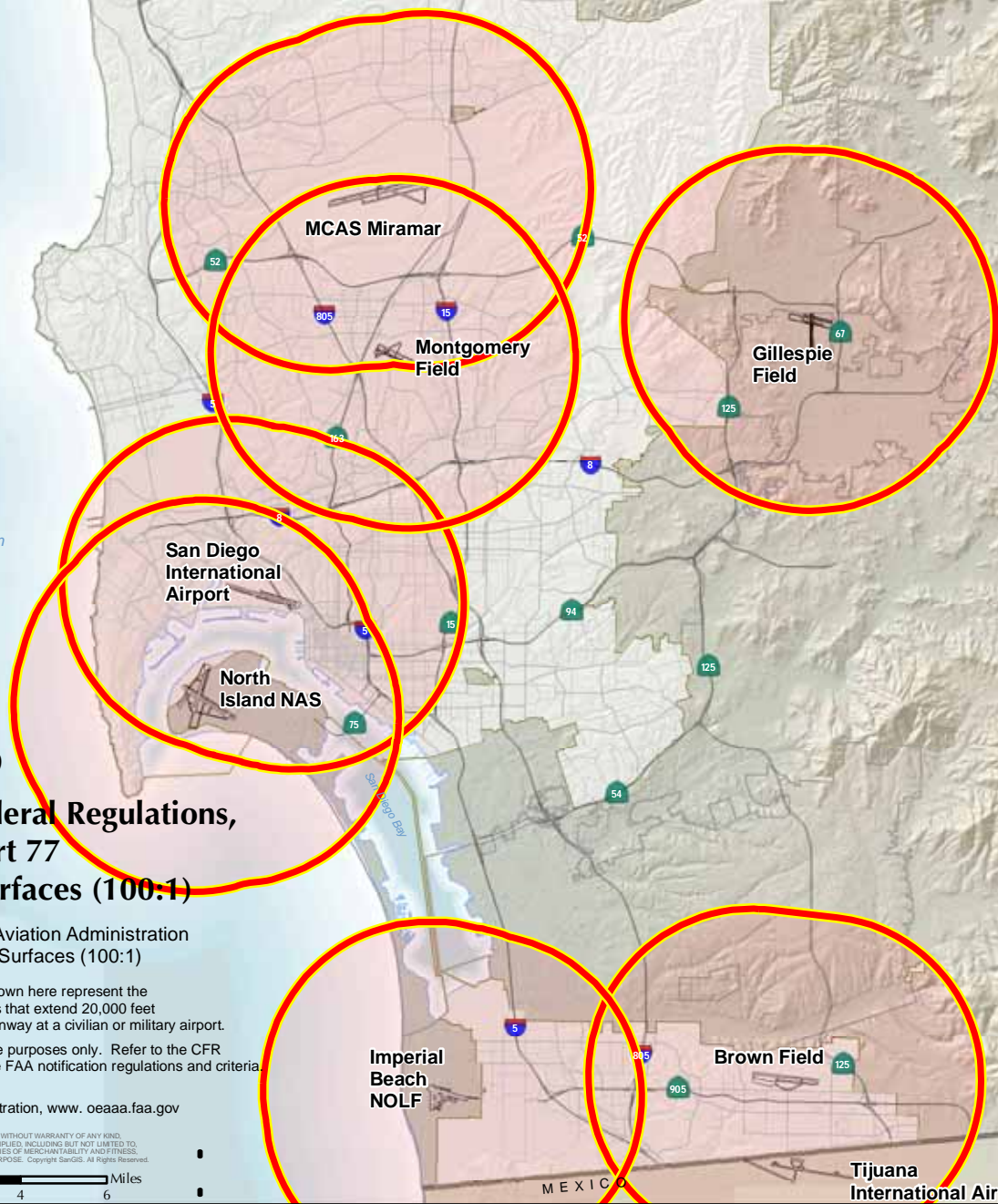



Figure 3.5-9
Code of Federal Regulations,
Title 14, Part 77
Noticing Surfaces (100:1)

 Federal Aviation Administration
Noticing Surfaces (100:1)

Notes:
FAA Noticing Surface shown here represent the 100:1 imaginary surfaces that extend 20,000 feet horizontally from each runway at a civilian or military airport.
This map is for illustrative purposes only. Refer to the CFR Part 77 for the applicable FAA noticing regulations and criteria.
Data Source:
Federal Aviation Administration, www.oaiaa.faa.gov
July 15, 2007

THIS MAP IS PROVIDED WITHOUT WARRANTY OF ANY KIND, EITHER EXPRESS OR IMPLIED, INCLUDING BUT NOT LIMITED TO, THE IMPLIED WARRANTIES OF MERCHANTABILITY AND FITNESS, FOR A PARTICULAR PURPOSE. Copyright SanGIS. All Rights Reserved.



MEXICO

Tijuana International Airport