

CITY OF SAN DIEGO
M E M O R A N D U M

DATE: June 13, 2013

TO: Historical Resources Board and Interested Parties

FROM: Jodie Brown, AICP, Senior Planner

SUBJECT: **ITEM 6 — La Jolla Post Office**

This item was originally docketed for review by the Historical Resources Board at the April 25, 2013 Board meeting (Attachment 1). The item was not heard by the Board at that time and instead was continued for 30 days at the request of the La Jolla Historical Society to allow for further review (Attachment 2). At the subsequent Board meeting on May 23, 2013, the Historical Resources Board granted an additional 30 day continuance at the request of the La Jolla Historical Society to allow them to provide a new report with additional research and analysis under local register HRB Criteria A and C. The La Jolla Historical Society has submitted a reformatted version of the National Register nomination. This submittal does not adequately address local HRB designation Criteria, which differ from National Register Criteria (Attachment 3).

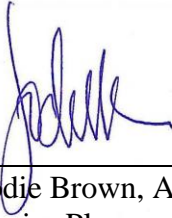
The HRB Guidelines for the Application of Historical Resources Board Designation Criteria dictate that an applicant seeking designation of a site under HRB Criteria A and C must provide documentation demonstrating that a resource: “exemplifies or reflects special elements of the City's, a community's, or a neighborhood's, historical, archaeological, cultural, social, economic, political, aesthetic, engineering, landscaping or architectural development” (Criterion A), and “embodies distinctive characteristics of a style, type, period, or method of construction or is a valuable example of the use of indigenous materials or craftsmanship” (Criterion C). The reformatted National Register nomination submitted does not provide the analysis required by the Guidelines to support local listing beyond HRB Criterion E.

Following the continuances issued over the past two HRB meetings, no report evaluating the subject property under local HRB Criteria, and no new or additional information has been provided to staff beyond the National Register Criteria analysis that was originally provided by the applicant.

Therefore, the staff recommendation provided in Staff Report No. HRB-13-020 and dated April 11, 2013 remains unchanged, as follows:

Designate the La Jolla Post Office located at 1140 Wall Street, a Works Progress Administration (WPA) era United States Post Office constructed in 1929 in the Spanish Colonial Revival style and reflecting a special element in the development of the community, as a historical resource with a period of significance of 1935-1960 under

HRB Criterion E. An interior element included in the designation is the public lobby mural, *Scenic View of the Village* (1935-1936), painted by Belle Baranceanu.



Jodie Brown, AICP
Senior Planner

Attachments:

1. Staff Report HRB-13-020 dated April 11, 2013
2. Staff Memo dated May 9, 2013
3. Letter with Attachment from La Jolla Historical Society dated June 6, 2013 (under separate cover)

CITY OF SAN DIEGO
M E M O R A N D U M

DATE: May 9, 2013
TO: Historical Resources Board and Interested Parties
FROM: Jodie Brown, Senior Planner
SUBJECT: **ITEM 6 — La Jolla Post Office**

This item was previously docketed for review by the Historical Resources Board at the April 25, 2013 Board meeting. The item was not heard by the Board at that time and instead was continued for 30 days at the request of the La Jolla Historical Society to allow for further review. At this time, there is no new information on this item.

The recommendation from the Staff Report dated April 11, 2013 remains unchanged:

Designate the La Jolla Post Office located at 1140 Wall Street, a Works Progress Administration (WPA) era United States Post Office constructed in 1929 in the Spanish Colonial Revival style and reflecting a special element in the development of the community, as a historical resource with a period of significance of 1935-1960 under HRB Criterion E. An interior element included in the designation is the public lobby mural, *Scenic View of the Village* (1935-1936), painted by Belle Baranceanu.



Jodie Brown, AICP
Senior Planner

Attachment: 1.) Staff Report 13-020 dated April 11, 2013



THE CITY OF SAN DIEGO
Historical Resources Board

DATE ISSUED: April 11, 2013 REPORT NO. HRB-13-020

ATTENTION: Historical Resources Board
Agenda of April 25, 2013

SUBJECT: **ITEM #13 – La Jolla Post Office**

APPLICANT: United States Postal Service

LOCATION: 1140 Wall Street, La Jolla Community, Council District 1

DESCRIPTION: Consider the designation of the La Jolla Post Office located at 1140 Wall Street as a historical resource.

STAFF RECOMMENDATION

Designate the La Jolla Post Office located at 1140 Wall Street, a Works Progress Administration (WPA) era United States Post Office constructed in 1929 in the Spanish Colonial Revival style and reflecting a special element in the development of the community, as a historical resource with a period of significance of 1935-1960 under HRB Criterion E. An interior element included in the designation is the public lobby mural, *Scenic View of the Village* (1935-1936), painted by Belle Baranceanu. This recommendation is based on the following finding:

The resource was listed on the National Register of Historic Places and the California State Register of Historical Resources by the State Office of Historical Preservation on January 2, 2013. Specifically, the resource meets National Register Criteria A and C at the local level of significance for its association with the community planning and development of La Jolla and for its architectural design, materials and method of construction respectively.

BACKGROUND

This item is being brought before the Historical Resources Board in conjunction with the owner's desire to have the site designated as a historical resource by the City of San Diego. On February 27, 2013 State Historic Preservation Officer Carol Roland-Nawi, Ph.D. notified the City in a letter addressed to Mayor Bob Filner that the subject property had been listed on the National Register of Historic Places and the California State Register of Historical Resources.

Development Services Department

1222 First Avenue, MS 512 • San Diego, CA 92101-4155
Tel (619) 235-5200 Fax (619) 446-5499

The La Jolla Post Office was found to meet National Register Criterion A at the local level of significance for its association with the community planning and development of La Jolla during its Community Development Era (1930-1945) and Post War Expansion Era (1946-1962) – two of the five distinct historical phases detailed in the *La Jolla Reconnaissance Survey* of 2004. The resource was funded under the National Recovery Act (1933-1939), designed by Louis A. Simon and constructed by the WPA in 1935. In 1960, the La Jolla Post Office was sensitively expanded by Architect William Lumpkins with a sizeable addition to the rear of the structure. This addition is associated with the Post War Expansion Era (1946-1962), the expansion of the La Jolla 92037 ZIP code and the effects following the construction of the San Diego campus of the University of California.

The resource was also found to meet National Register Criterion C at the local level of significance for its architectural design, materials, and method of construction. The Post Office is constructed of a poured-in-place reinforced concrete shell, medium sand finish stucco cladding, Mission clay tile side gable roof, and asymmetrical side pavilions with flat roofs. The middle portion of the primary façade is symmetrically laid out with the double door entrance flanked by sets of nine over nine and three over three double hung windows. Remaining fenestration consists of six over six double hung windows on the primary (south) and west façades, and twelve over twelve on the east façade. An interior element that contributes greatly to the building's significance under Criterion C is the oil-on-canvas coastal landscape, *Scenic View of the Village*, located in the public lobby and painted at the time of construction by Belle Baranceanu, who achieved local, national and international recognition as a WPA muralist. The landscape illustrates a Cubist interpretation of La Jolla and is one of two San Diego WPA murals painted by Baranceanu that remain accessible to the public. The lobby tile floor is also original and exhibits scarring from the 1960 removal of a wind screen that is depicted on the original design plans. At the time of its construction in 1935, the WPA-built Spanish Colonial Revival style Post Office complimented the design character of La Jolla's commercial core by blending the Spanish aesthetic with the restrained, elegant and imposing design language typical of the WPA and New Deal construction.

The historic name of the resource, the La Jolla Post Office, has been identified consistent with the Board's adopted naming policy and reflects the historical name established by the community and the resource's name as it is listed on the National Register of Historic Places and the California Register of Historical Resources.

ANALYSIS

A National Register of Historic Places Nomination Report was prepared by Diane Kane and Angeles Leira of the La Jolla Historical Society and submitted to the State Office of Historic Preservation in August of 2012 which concludes that the resource is significant under National Register Criteria A and C. Given that the La Jolla Post Office has since been listed on the National Register and the California State Register at the local level of significance, staff recommends local designation under HRB Criterion E. This determination is consistent with the *Guidelines for the Application of Historical Resources Board Designation Criteria*, as follows.

CRITERION E - Is listed or has been determined eligible by the National Park Service for listing on the National Register of Historic Places or is listed or has been determined eligible by the State Historical Preservation Office for listing on the State Register of Historical Resources.

The La Jolla Post Office was listed on the National Register of Historic Places on January 2, 2013 and subsequently listed on the California Register of Historical Resources, pursuant to Section 4851 (a)(2) of the Public Resources Code. The resource was found to meet the National Register Criterion A at the local level of significance for its association with the community planning and development of La Jolla during its Community Development Era (1930-1945) and Post War Expansion Era (1946-1962); and Criterion C at the local level of significance for its architectural design, materials, and method of construction.

At the HRB meeting of July 26, 2007, the Board voted unanimously to accept the proposed recommendations by the Historic Building Interiors Ad Hoc Subcommittee concerning the evaluation and designation of interior spaces. It was agreed that the interiors of public buildings and publicly accessible interiors of otherwise private buildings require evaluation and that interior spaces that are not volunteered by the owner must be of exceptional significance in order to be designated. The Cubist, Baranceanu WPA mural in the public lobby of the La Jolla Post Office is a well-preserved element of historical significance and the National Register Nomination Report clearly describes it as such. Therefore staff recommends the lobby mural, *Scenic View of the Village*, painted by Belle Baranceanu be included in any designation.

Given that the La Jolla Post Office has been listed on the National and California Registers, and given that the Historical Resources Board designation criteria provide for the local designation of resources listed on or determined eligible for listing on the National Register of Historic Places, staff recommends designation of the La Jolla Post Office, including the interior lobby mural, *Scenic View of the Village*, by Belle Baranceanu under HRB Criterion E.

OTHER CONSIDERATIONS

If the property is designated by the HRB, conditions related to restoration or rehabilitation of the resource may be identified by staff during the Mills Act application process, and included in any future Mills Act contract.

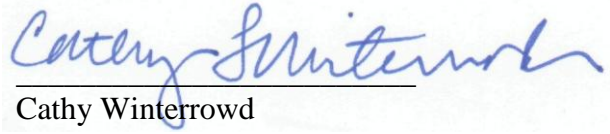
CONCLUSION

Based on the information submitted and staff's field check, it is recommended that the La Jolla Post Office located at 1140 Wall Street be designated with a period of significance of 1935-1960 under HRB Criterion E due to its listing on the National and California State Registers. An interior element included in the designation is the public lobby mural, *Scenic View of the Village* (1935-1936), painted by Belle Baranceanu. Designation brings with it the responsibility of maintaining the building in accordance with the Secretary of the Interior's Standards. The benefits of designation include the use of the more flexible Historical Building Code; flexibility in the application of other regulatory requirements; the use of the Historical Conditional Use

Permit which allows flexibility of use; and other programs which vary depending on the specific site conditions and owner objectives.



Camille Pekarek
Planning Intern



Cathy Winterrowd
Assistant Deputy Director/HRB Liaison

CP/jb/cw

Attachments:

1. Draft Resolution
2. Interior Elements Proposed for Designation
3. Letter to Mayor Filner dated February 27, 2013
4. Staff Field Check Photo Survey dated March 2013
5. Applicant's Historical Report under separate cover

RESOLUTION NUMBER N/A

ADOPTED ON 4/25/2013

WHEREAS, the Historical Resources Board of the City of San Diego held a noticed public hearing on 4/25/2013, to consider the historical designation of the **La Jolla Post Office** (owned by United States of America, 475 L'Enfant Plaza, SW, Room 6670, Washington, DC 20260-1862) located at **1140 Wall Street, San Diego, CA 92037**, APN: **350-092-11-00**, further described as BLK 53 LOTS 18 THRU 21 in the City of San Diego, County of San Diego, State of California; and

WHEREAS, in arriving at their decision, the Historical Resources Board considered the historical resources report prepared by the applicant, the staff report and recommendation, all other materials submitted prior to and at the public hearing, inspected the subject property and heard public testimony presented at the hearing; and

WHEREAS, the property would be added to the Register of Designated Historical Resources as **Site No. 0**, and

WHEREAS, designated historical resources located within the City of San Diego are regulated by the Municipal Code (Chapter 14, Article 3, Division 2) as such any exterior modifications (or interior if any interior is designated) shall be approved by the City, this includes but is not limited to modifications to any windows or doors, removal or replacement of any exterior surfaces (i.e. paint, stucco, wood siding, brick), any alterations to the roof or roofing material, alterations to any exterior ornamentation and any additions or significant changes to the landscape/ site.

NOW, THEREFORE,

BE IT RESOLVED, the Historical Resources Board based its designation of the La Jolla Post Office on the following findings:

(1) The property is historically significant under CRITERION E, as the resource was listed on the National Register of Historic Places and the California State Register of Historical Resources by the State Office of Historical Preservation on January 2, 2013. Specifically, the resource meets National Register Criteria A and C at the local level of significance for its association with the community planning and development of La Jolla and for its architectural design, materials and method of construction respectively. This finding is further supported by the staff report, the historical research report, and written and oral evidence presented at the designation hearing

BE IT FURTHER RESOLVED, in light of the foregoing, the Historical Resources Board of the City of San Diego hereby approves the historical designation of the above named property. The designation includes the parcel and exterior of the building as Designated Historical Resource **Site No. 0**.

BE IT FURTHER RESOLVED, the designation shall include the interior public lobby mural, *Scenic View of the Village* (1935-1936), painted by Belle Baranceanu.

BE IT FURTHER RESOLVED, the Secretary to the Historical Resources Board shall cause this resolution to be recorded in the office of the San Diego County Recorder at no fee, for the benefit of the City of San Diego, and with no documentary tax due.

Vote: N/A

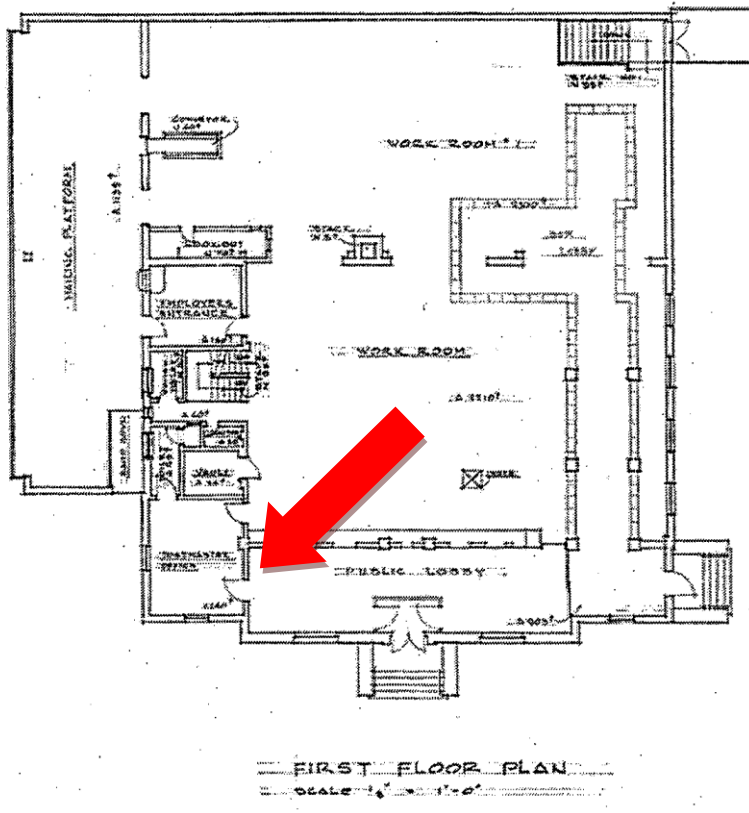
BY: _____
JOHN LEMMO, Chair
Historical Resources Board

APPROVED AS TO FORM AND
LEGALITY: JAN I. GOLDSMITH,
CITY ATTORNEY

BY: _____
CORRINE NEUFFER,
Deputy City Attorney

Interior Elements Proposed for Designation

WPA Cubist oil-on-canvas mural painted by Belle Baranceanu, 1935



East facing wall, west end of Public Lobby, March 2013

**OFFICE OF HISTORIC PRESERVATION
DEPARTMENT OF PARKS AND RECREATION**

P.O. BOX 942896
SACRAMENTO, CA 94296-0001
(916) 445-7000 Fax: (916) 445-7053
calshpo@parks.ca.gov



February 27, 2013

Honorable Bob Filner
Mayor, City of San Diego
202 C Street, 11th Floor
San Diego, CA 92101

RE: La Jolla Post Office Listing on the
National Register of Historic Places

Dear Mayor Filner:

I am pleased to notify you that on January 2, 2013, the above-named property was placed on the National Register of Historic Places (National Register). As a result of being placed on the National Register, this property has also been listed in the California Register of Historical Resources, pursuant to Section 4851(a)(2) of the Public Resources Code.

Placement on the National Register affords a property the honor of inclusion in the nation's official list of cultural resources worthy of preservation and provides a degree of protection from adverse effects resulting from federally funded or licensed projects. Registration provides a number of incentives for preservation of historic properties, including special building codes to facilitate the restoration of historic structures, and certain tax advantages.

There are no restrictions placed upon a private property owner with regard to normal use, maintenance, or sale of a property listed in the National Register. However, a project that may cause substantial adverse changes in the significance of a registered property may require compliance with local ordinances or the California Environmental Quality Act. In addition, registered properties damaged due to a natural disaster may be subject to the provisions of Section 5028 of the Public Resources Code regarding demolition or significant alterations, if imminent threat to life safety does not exist.

If you have any questions or require further information, please contact the Registration Unit at (916) 445-7008.

Sincerely,

A handwritten signature in black ink that reads "Carol Roland-Nawi, Ph.D.".

Carol Roland-Nawi
State Historic Preservation Officer

Staff Field Check Photo Survey – La Jolla Post Office, 1140 Wall Street



South and east elevations, March 2013



South elevation, March 2013



East end, south elevation, March 2013



West end, south elevation, March 2013



East elevation, March 2013



West elevation, March 2013



West end, Lobby interior, March 2013