

CITY OF SAN DIEGO HISTORICAL RESOURCES BOARD

DESIGN ASSISTANCE SUBCOMMITTEE

Wednesday, September 3, 2014, at 4:00 PM

5th Floor Conference Room C
Development Services Department
City Operations Building
1222 First Avenue, San Diego, CA

The Design Assistance Subcommittee is a subcommittee of the City of San Diego's Historical Resources Board. It is primarily composed of Historical Resources Board members who are design professionals with expertise in historic preservation. The Subcommittee is not a voting entity, but rather a forum for discussing issues and solutions related to historic resources and their preservation. Comments on a project concept at the meeting do not predispose future positions on the project by the Historical Resources Board. After a brief staff introduction to a project, applicants will be allowed 5 minutes for their presentation, which should be focused on the project's compliance with the applicable U.S. Secretary of the Interior's Standards Treatment Plan (i.e Rehabilitation, Restoration, Preservation or Reconstruction). Applicants are encouraged to engage in an open dialogue regarding the changes that they propose to make to the historic resource and to seriously consider the Subcommittee members' comments before finalizing their project plans.

The Secretary of the Interior's Standards for Treatment of Historic Properties shall be used as guidelines in evaluating alterations, changes or potential relocation or demolition of historic resources.

Members of the public will be allowed an opportunity to speak, for up to three minutes each, at the end of the applicant's presentation of the project. Each member of the public is required to state their name and the organization (if any) that they represent prior to their three minute presentation.

MEETING AGENDA

1. Introductions
2. Public Comment (on matters not on the agenda)
3. Project Reviews
 - **ITEM 3A:** Estimated time 25 Minutes
 - Listings: HRB Site #127-075
 - Address: 743 5th Avenue
 - Historic Name: Gaslamp Historic District
 - Significance: District Contributor
 - Mills Act Status: No
 - PTS #: 384391
 - Project Contact: The Briad Group; ACM Architects
 - Treatment: Rehabilitation
 - Project Scope: Proposed construction of a new 118 room hotel with the incorporation of a Galleria Building historic façade on 6th Avenue. The project is subject to the Gasmap

Planned District Ordinance (GQPDO) and the Gaslamp Quarter Design Guidelines. The applicant is requesting approval of an increase in height from 60' to 75' allowed under the GQPDO. The applicant is also seeking direction on a proposed facade rehabilitation along 6th Avenue.

Existing Square Feet: 0

Additional Square Feet: 0

Total Proposed Square Feet: 65,876

Prior DAS Review: N/A

4. Adjourn

The next regularly-scheduled Subcommittee Meeting will be on October 1, 2014 at 4:00 PM.

For more information, please contact Jodie Brown, AICP at JDBrown@sanidiego.gov or 619.533.6300.



DEVELOPER



HOTEL GROUPS



PROJECT

CONCEPT DESIGN
 AC HOTEL - GASLAMP
 SAN DIEGO, CALIFORNIA, 92101

SHEET

COVER SHEET

SHEET NO.

1

CSD SUBMITTAL 10.30.13
 CSD RE-SUBMITTAL 02.03.14
 CSD RE-SUBMITTAL 08.12.14

10.30.13
 02.03.14
 08.12.14



AWBREY
 COOK
 MCGILL



PROJECT DESCRIPTION

THIS PROJECT PROPOSES TO DEMOLISH AN EXISTING STRUCTURE WHILE MAINTAINING AN EXISTING HISTORICAL WALL ON THE EAST SIDE OF THE PROPERTY. THE NEW BUILDING WILL BE A 119 ROOM HOTEL WITH A RESTAURANT ON THE FIRST FLOOR AND A NIGHTCLUB ON THE BASEMENT LEVEL.

PROJECT DATA

ZONE: GASLAMP QUARTER
OVERLAYS:

FAR CALCULATIONS:

SITE AREA: 11,500 S.F.
BASE F.A.R.: x6
F.A.R.: 69,000 S.F.

AREA CALCULATIONS

LEVEL	GROSS AREA (SF)
LOWER BASEMENT	11,530 (EXCLUDED FROM F.A.R.)
UPPER BASEMENT	11,529 (EXCLUDED FROM F.A.R.)
GROUND LEVEL	
HOTEL LOBBY	2,102
HOTEL SERVICES	361
HOTEL BACK OF HOUSE	198
RESTAURANT	4,995
RESTROOM	388
CIRCULATION (HORIZONTAL AND VERTICAL)	3,003
GROUND LEVEL (TOTAL)	11,047
LEVEL 2	9,486
LEVEL 3	9,451
LEVEL 4	9,394
LEVEL 5	9,394
LEVEL 6	9,394
LEVEL 7	7,167
LEVEL 8	543
(INCLUDES ONLY LAUNDRY CHUTE ROOM, STAIR 2, AND POOL EQUIPMENT ROOM)	

TOTAL GROSS AREA: 88,935 SF

TOTAL AREA INCLUDED IN FAR: 65,876 SF

PARKING

.3 SPACES PER ROOM REQUIRED

119 X .3 = 35.7, 36 REQUIRED **36 PROVIDED**

MOTORCYCLES

1:20 (35/20)= 2 REQUIRED, **2 PROVIDED**

BICYCLES

1:20 (35/20)= 2 REQUIRED, **3 PROVIDED**

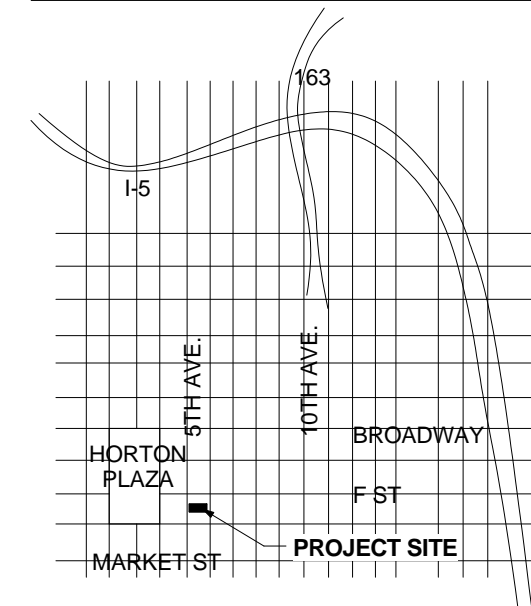
GUESTROOM MATRIX

FLOOR LEVEL	KING (K)	DOUBLE (D)	DOUBLE DOUBLE SUITE (DDS)	KING SUITE (KS)	SUB-TOTAL
LEVEL 2	15	4	1	0	20
LEVEL 3	15	4	1	0	23
LEVEL 4	17	5	1	0	23
LEVEL 5	17	5	1	0	23
LEVEL 6	17	5	1	0	23
LEVEL 7	6	0	0	1	7
TOTAL					119

SHEET INDEX

NUMBER	SHEET TITLE
1	COVER SHEET
2	TITLE PROJECT DATA
3	VACINITY MAP
4	SITE PLAN
5	LOWER BASEMENT LEVEL PLAN
6	UPPER BASEMENT LEVEL PLAN
7	CLUB LEVEL ENTRY FLOOR PLAN
8	LOBBY LEVEL FLOOR PLAN
9	2ND LEVEL FLOOR PLAN
10	3RD LEVEL FLOOR PLAN
11	4TH LEVEL FLOOR PLAN
12	5TH LEVEL FLOOR PLAN
13	6TH LEVEL FLOOR PLAN
14	7TH LEVEL, MAIN POOL AND UPPER LEVEL SUITE FLOOR PLAN
15	ROOF PLAN
16	EXTERIOR ELEVATIONS
17	EXTERIOR ELEVATIONS
18	EXTERIOR ELEVATIONS
19	EXTERIOR ELEVATIONS
20	ENLARGED EXTERIOR ELEVATIONS
21	ENLARGED EXTERIOR ELEVATIONS
22	5TH AVE. PERSPECTIVE
23	5TH AVENUE PERSPECTIVE
24	6TH AVENUE PERSPECTIVE
25	DISTANCE VIEWS
26	SECTIONS
27	SECTIONS
28	VACINITY ELEVATIONS
29	MATERIAL BOARD

VACINITY MAP



PROPERTY DESCRIPTION

LEGAL DESCRIPTION

PARCEL 1:
LOT C IN BLOCK 70 OF HORTON'S ADDITION, IN THE CITY OF SAN DIEGO, COUNTY OF SAN DIEGO, STATE OF CALIFORNIA, ACCORDING TO MAP THEREOF, ON FILE IN THE OFFICE OF THE COUNTY RECORDER OF SAN DIEGO COUNTY.

PARCEL 2:
LOT J IN BLOCK 70 OF HORTON'S ADDITION, IN THE CITY OF SAN DIEGO, COUNTY OF SAN DIEGO, STATE OF CALIFORNIA, ACCORDING TO MAP THEREOF, ON FILE IN THE OFFICE OF THE COUNTY RECORDER OF SAN DIEGO COUNTY.

PARCEL 3:
THE NORTH HALF OF LOT D IN BLOCK 70 OF HORTON'S ADDITION, IN THE CITY OF SAN DIEGO, COUNTY OF SAN DIEGO, STATE OF CALIFORNIA, ACCORDING TO MAP THEREOF MADE BY L.L. LOCKLING, ON FILE IN THE OFFICE OF THE COUNTY RECORDER OF SAN DIEGO COUNTY.

PARCEL NUMBER:

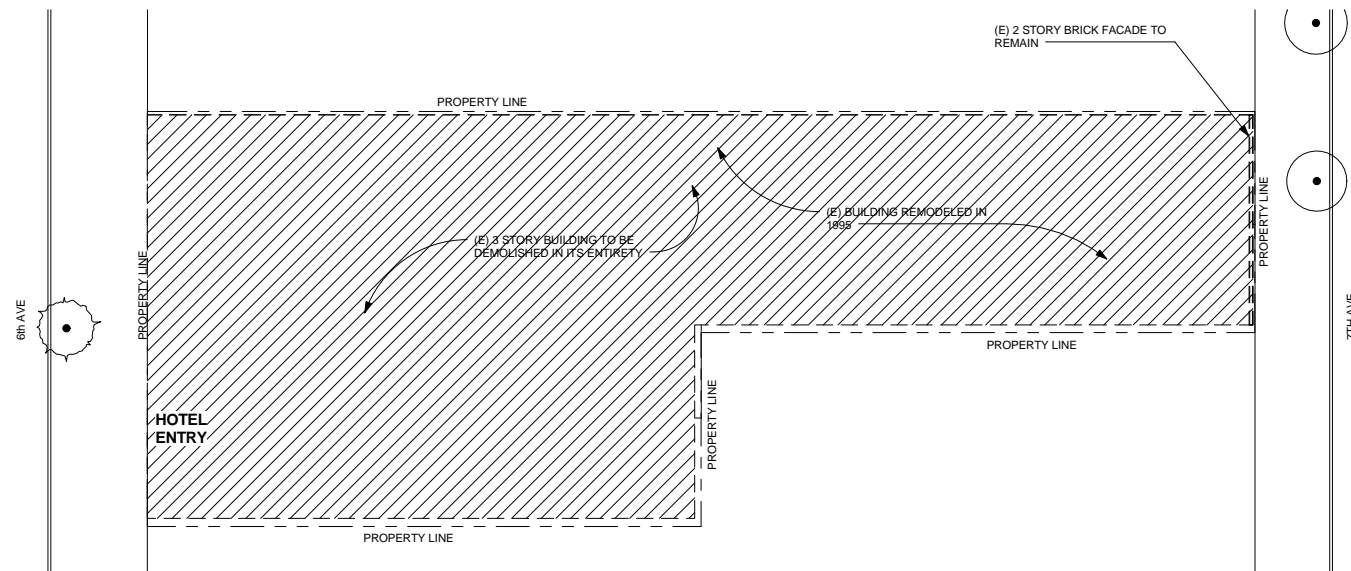
5350931700

CONTACT INFORMATION

DEVELOPER
THE BRIAD GROUP
78 OKNER PARKWAY, LIVINGSTON, NJ 07039
ATTN:
T: 973.597.6433
EMAIL ADDRESS

ARCHITECT
AWBREY COOK MCGILL ARCHITECTS
1045 14TH ST., SAN DIEGO CA 92101
ATTN: DENNIS ROGERS
T: 619.398.3480
F: 619.398.3480
DENNIS@ACM-ARCHITECTS.COM

PERMITTING AND PLANNING AGENCY
CIVIC SAN DIEGO
401 'B' STREET, SAN DIEGO, CA 92101
ATTN:
P: 619.235.2200
F: 619.236.9148



DEMO



DEVELOPER



HOTEL GROUPS



PROJECT

CONCEPT DESIGN AC HOTEL - GASLAMP

SAN DIEGO, CALIFORNIA, 92101

SHEET

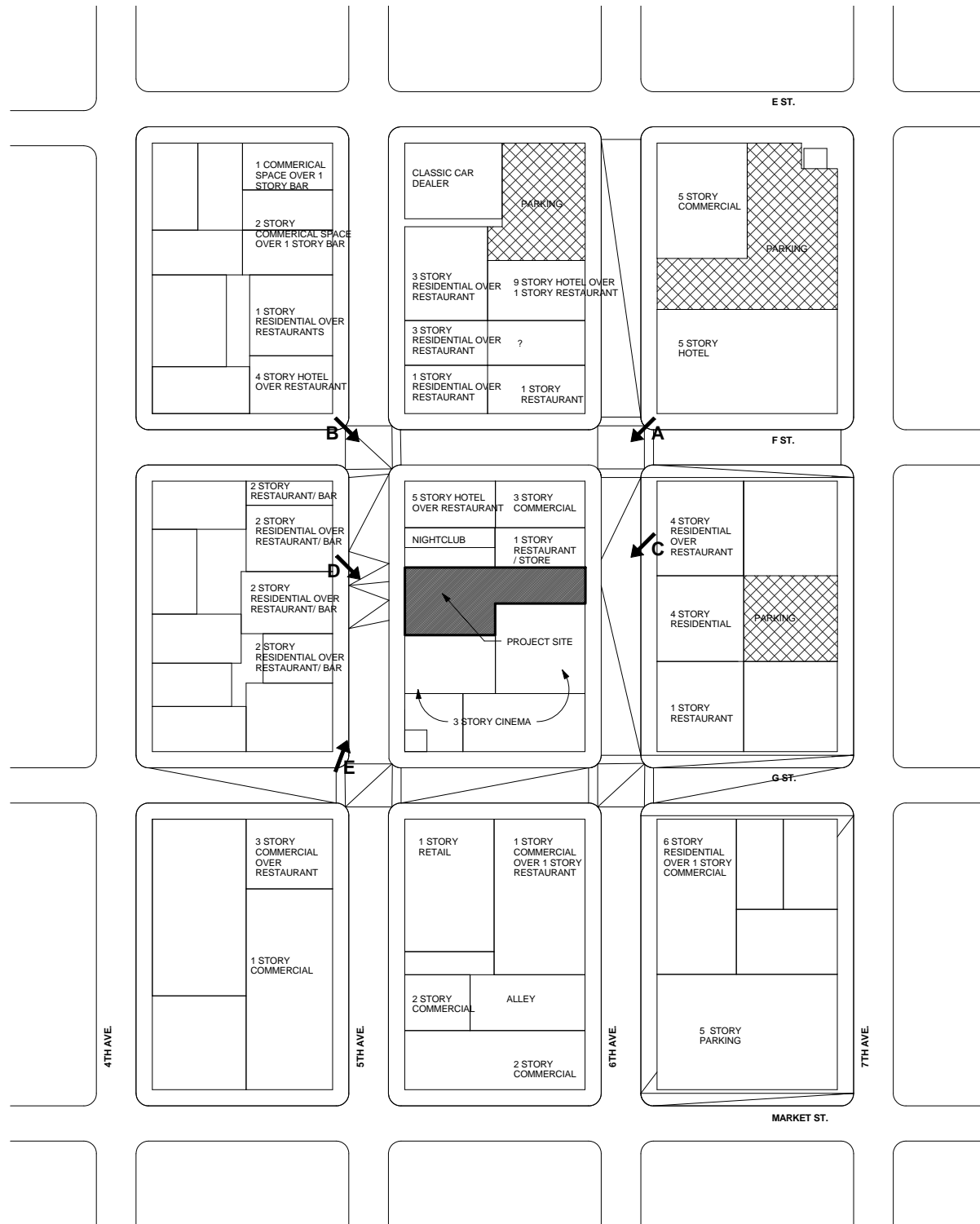
TITLE PROJECT DATA

SHEET NO.

2



AWBREY
COOK
MCGILL



A. 6TH AVE. AND F ST. VIEW FACING SOUTHWEST



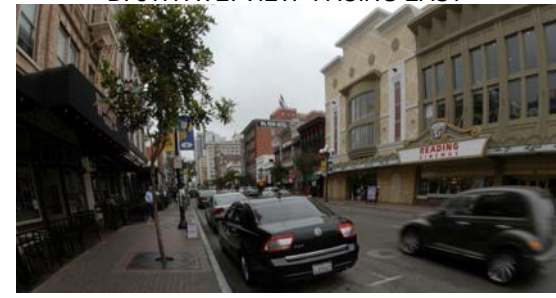
B. 5TH AVE. AND F ST. VIEW FACING SOUTHEAST



C. 6TH AVE. VIEW FACING WEST



D. 5TH AVE. VIEW FACING EAST



E. 5TH AVE. AND G ST. VIEW FACING NORTHEAST

PHOTO KEY AND VACINITY MAP LEGEND

- ARROW INDICATES DESIGNATION AND THE DIRECTION THE PHOTO WAS TAKEN
- INDICATES THE PROJECT SITE
- INDICATES PARKING

DEVELOPER



HOTEL GROUPS



PROJECT

CONCEPT DESIGN
AC HOTEL - GASLAMP
SAN DIEGO, CALIFORNIA, 92101

SHEET

VACINITY MAP

SHEET NO.

3

ISSUED FOR:	DATE:
CSD SUBMITTAL	10.30.13
CSD RE-SUBMITTAL	02.03.14
CSD RE-SUBMITTAL	08.12.14



AWBREY
COOK
MCGILL

DEVELOPER



HOTEL GROUPS



PROJECT

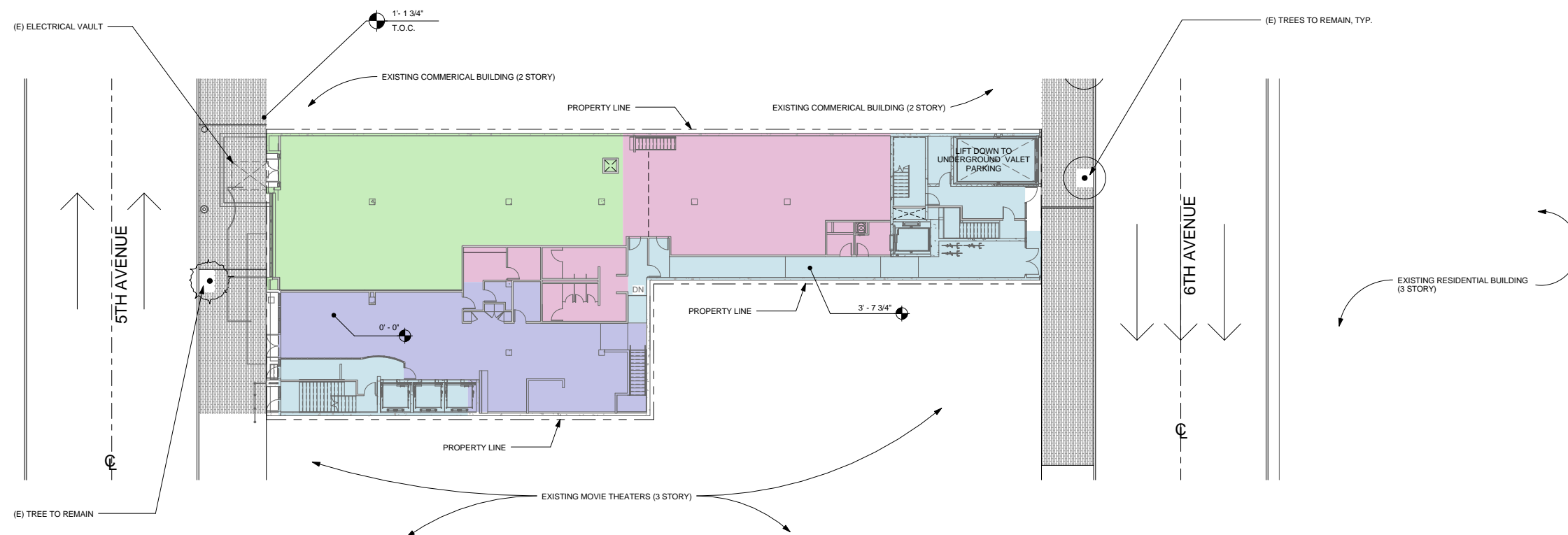
CONCEPT DESIGN
AC HOTEL - GASLAMP
SAN DIEGO, CALIFORNIA, 92101

SHEET

SITE PLAN

SHEET NO.

4



GROUND FLOOR AREAS

- HOTEL LOBBY
- RESTAURANT
- VERTICAL AND HORIZONTAL CIRCULATION/ EGRESS
- SERVICE AREAS



PROPOSED SITE PLAN



ISSUED FOR:	DATE:
CSD SUBMITTAL	10.30.13
CSD RE-SUBMITTAL	02.03.14
CSD RE-SUBMITTAL	08.12.14



AWBREY
COOK
MCGILL

architects

DEVELOPER



HOTEL GROUPS



PROJECT

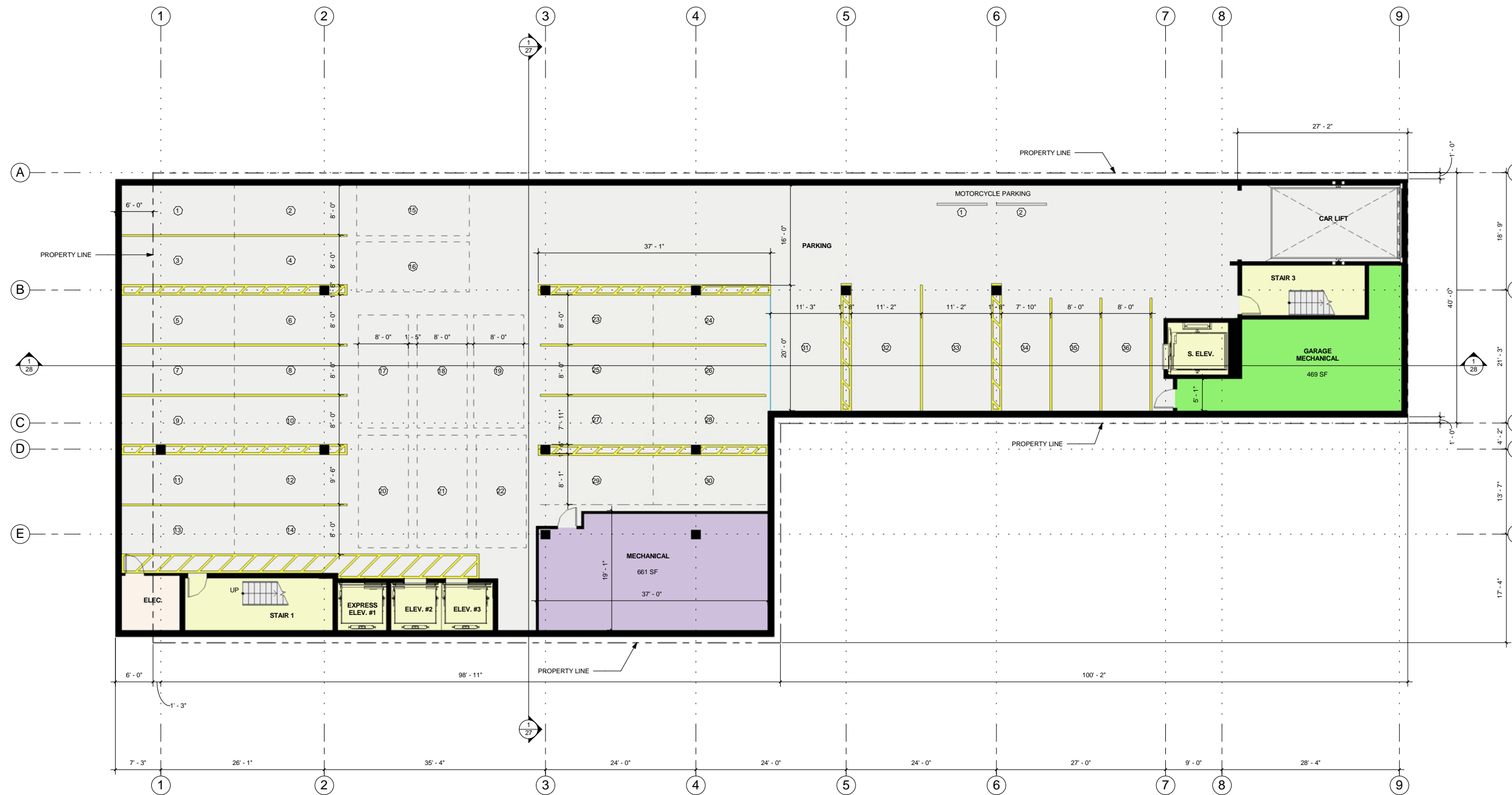
CONCEPT DESIGN
AC HOTEL - GASLAMP
SAN DIEGO, CALIFORNIA, 92101

SHEET

LOWER BASEMENT LEVEL PLAN

SHEET NO.

5



LOWER BASEMENT LEVEL FLOOR PLAN



ISSUED FOR:	DATE:
CSD SUBMITTAL	10.30.13
CSD RE-SUBMITTAL	02.03.14
CSD RE-SUBMITTAL	08.12.14



AWBREY
COOK
MCGILL



SEE CLUB LEVEL ENTRY PLAN FOR MORE INFORMATION

DEVELOPER



HOTEL GROUPS



PROJECT

CONCEPT DESIGN
AC HOTEL - GASLAMP
SAN DIEGO, CALIFORNIA, 92101

SHEET

UPPER BASEMENT LEVEL PLAN

SHEET NO.

6



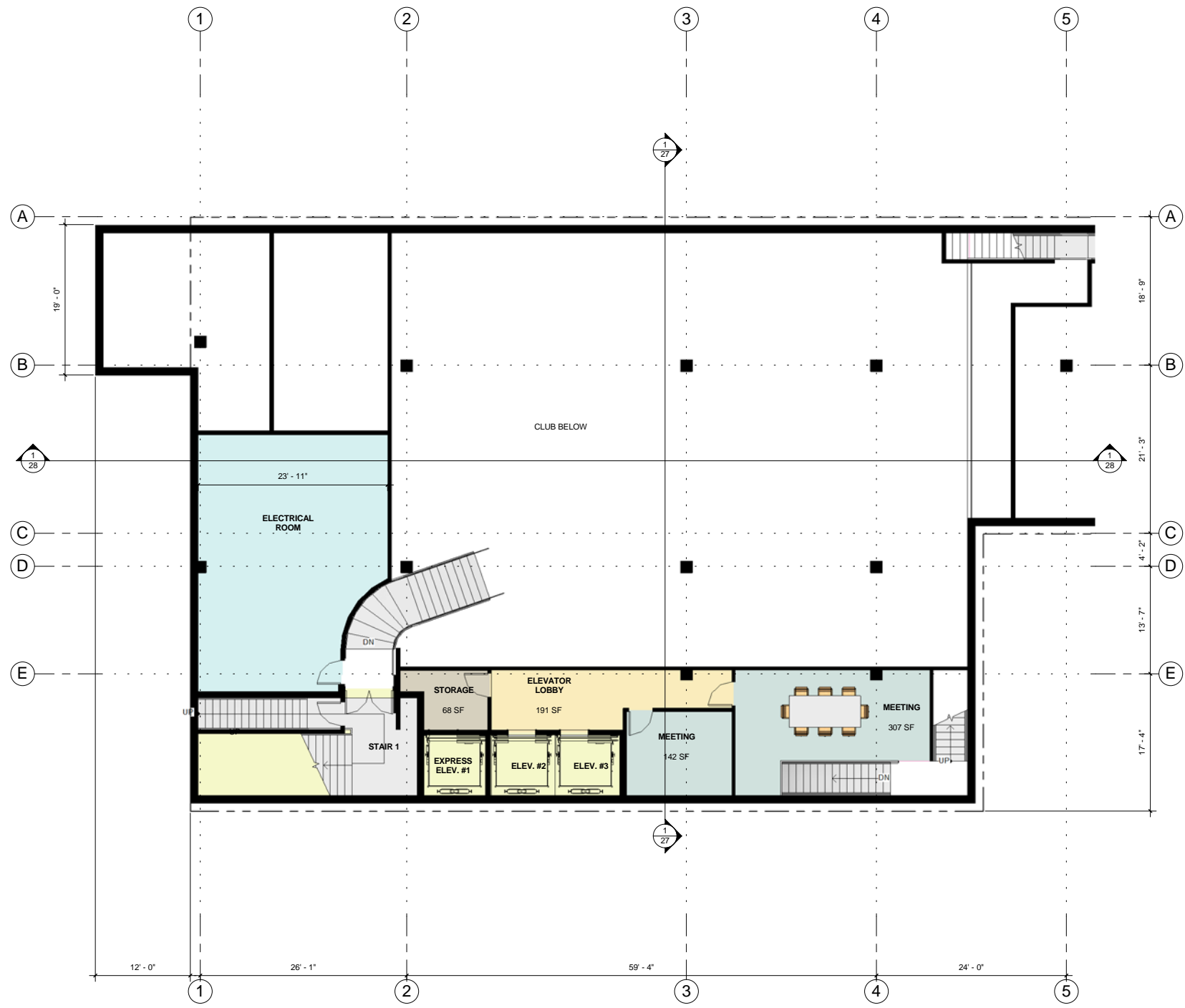
UPPER BASEMENT LEVEL FLOOR PLAN



ISSUED FOR:	DATE:
CSD SUBMITTAL	10.30.13
CSD RE-SUBMITTAL	02.03.14
CSD RE-SUBMITTAL	08.12.14



AWBREY
COOK
MCGILL



BASEMENT CLUB LEVEL ENTRY PLAN



ISSUED FOR:	DATE:
CSD SUBMITTAL	10.30.13
CSD RE-SUBMITTAL	02.03.14
CSD RE-SUBMITTAL	08.12.14

DEVELOPER



HOTEL GROUPS



PROJECT

CONCEPT DESIGN
AC HOTEL - GASLAMP
SAN DIEGO, CALIFORNIA, 92101

SHEET

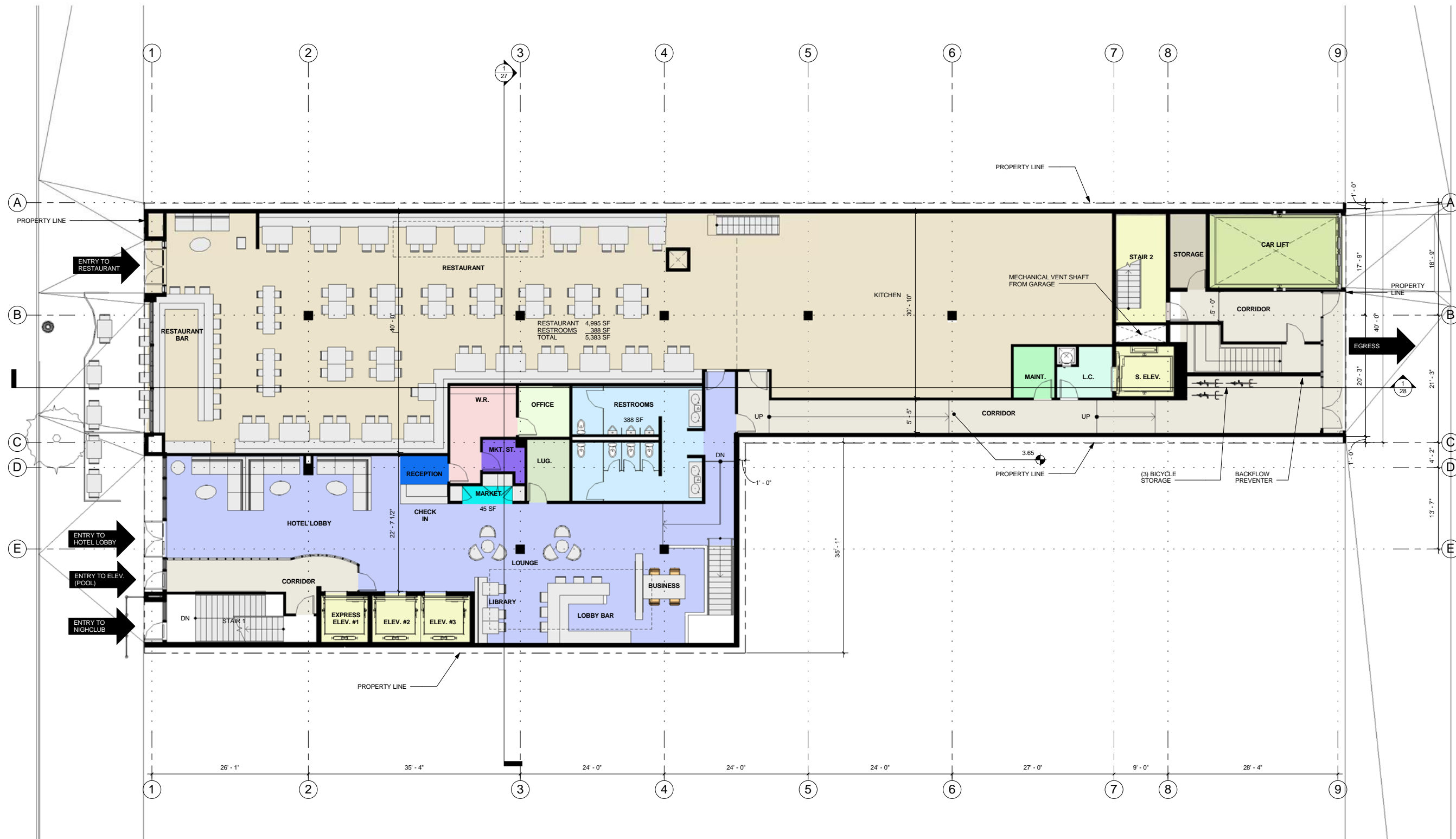
CLUB LEVEL ENTRY FLOOR PLAN

SHEET NO.

7



AWBREY
COOK
MCGILL



DEVELOPER



HOTEL GROUPS



PROJECT

CONCEPT DESIGN
AC HOTEL - GASLAMP
SAN DIEGO, CALIFORNIA, 92101

SHEET

LOBBY LEVEL FLOOR PLAN

SHEET NO.

8

ISSUED FOR:	DATE:
CSD SUBMITTAL	10.30.13
CSD RE-SUBMITTAL	02.03.14
CSD RE-SUBMITTAL	08.12.14



LOBBY LEVEL FLOOR PLAN



AWBREY
COOK
MCGILL



DEVELOPER



HOTEL GROUPS



PROJECT

CONCEPT DESIGN
AC HOTEL - GASLAMP
SAN DIEGO, CALIFORNIA, 92101

SHEET

2ND LEVEL FLOOR PLAN

SHEET NO.

9

ISSUED FOR:	DATE:
CSD SUBMITTAL	10.30.13
CSD RE-SUBMITTAL	02.03.14
CSD RE-SUBMITTAL	08.12.14



2ND LEVEL FLOOR PLAN



AWBREY
COOK
MCGILL



DEVELOPER



HOTEL GROUPS



PROJECT

CONCEPT DESIGN
AC HOTEL - GASLAMP
SAN DIEGO, CALIFORNIA, 92101

SHEET

3RD LEVEL FLOOR PLAN

SHEET NO.

10

ISSUED FOR:	DATE:
CSD SUBMITTAL	10.30.13
CSD RE-SUBMITTAL	02.03.14
CSD RE-SUBMITTAL	08.12.14



3RD LEVEL FLOOR PLAN



AWBREY
COOK
MCGILL



DEVELOPER



HOTEL GROUPS



PROJECT

CONCEPT DESIGN
AC HOTEL - GASLAMP
SAN DIEGO, CALIFORNIA, 92101

SHEET

4TH LEVEL FLOOR PLAN

SHEET NO.

11

ISSUED FOR:	DATE:
CSD SUBMITTAL	10.30.13
CSD RE-SUBMITTAL	02.03.14
CSD RE-SUBMITTAL	08.12.14



4TH LEVEL FLOOR PLAN



AWBREY
COOK
MCGILL



DEVELOPER



HOTEL GROUPS



PROJECT

CONCEPT DESIGN
AC HOTEL - GASLAMP
SAN DIEGO, CALIFORNIA, 92101

SHEET

5TH LEVEL FLOOR PLAN

SHEET NO.

12

ISSUED FOR:	DATE:
CSD SUBMITTAL	10.30.13
CSD RE-SUBMITTAL	02.03.14
CSD RE-SUBMITTAL	08.12.14



5TH LEVEL FLOOR PLAN



AWBREY
 COOK
 MCGILL



DEVELOPER



HOTEL GROUPS



PROJECT

CONCEPT DESIGN
AC HOTEL - GASLAMP
SAN DIEGO, CALIFORNIA, 92101

SHEET

6TH LEVEL FLOOR PLAN

SHEET NO.

13

ISSUED FOR:	DATE:
CSD SUBMITTAL	10.30.13
CSD RE-SUBMITTAL	02.03.14
CSD RE-SUBMITTAL	08.12.14



6TH LEVEL FLOOR PLAN



AWBREY
COOK
MCGILL

DEVELOPER



HOTEL GROUPS



PROJECT

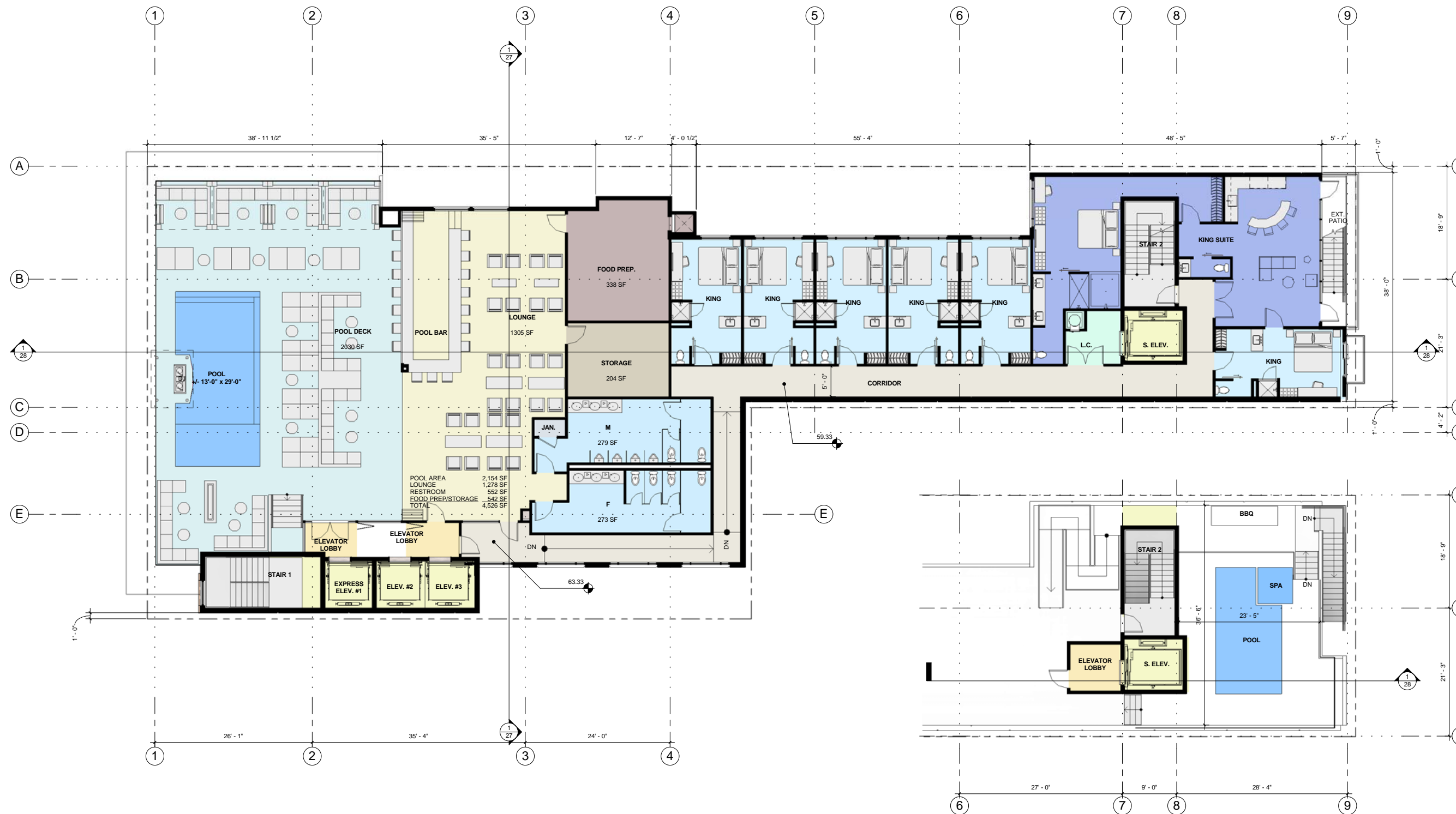
CONCEPT DESIGN
AC HOTEL - GASLAMP
SAN DIEGO, CALIFORNIA, 92101

SHEET

7TH LEVEL, MAIN POOL AND UPPER
LEVEL SUITE FLOOR PLAN

SHEET NO.

14



LEVEL 7 AND MAIN POOL FLOOR PLAN



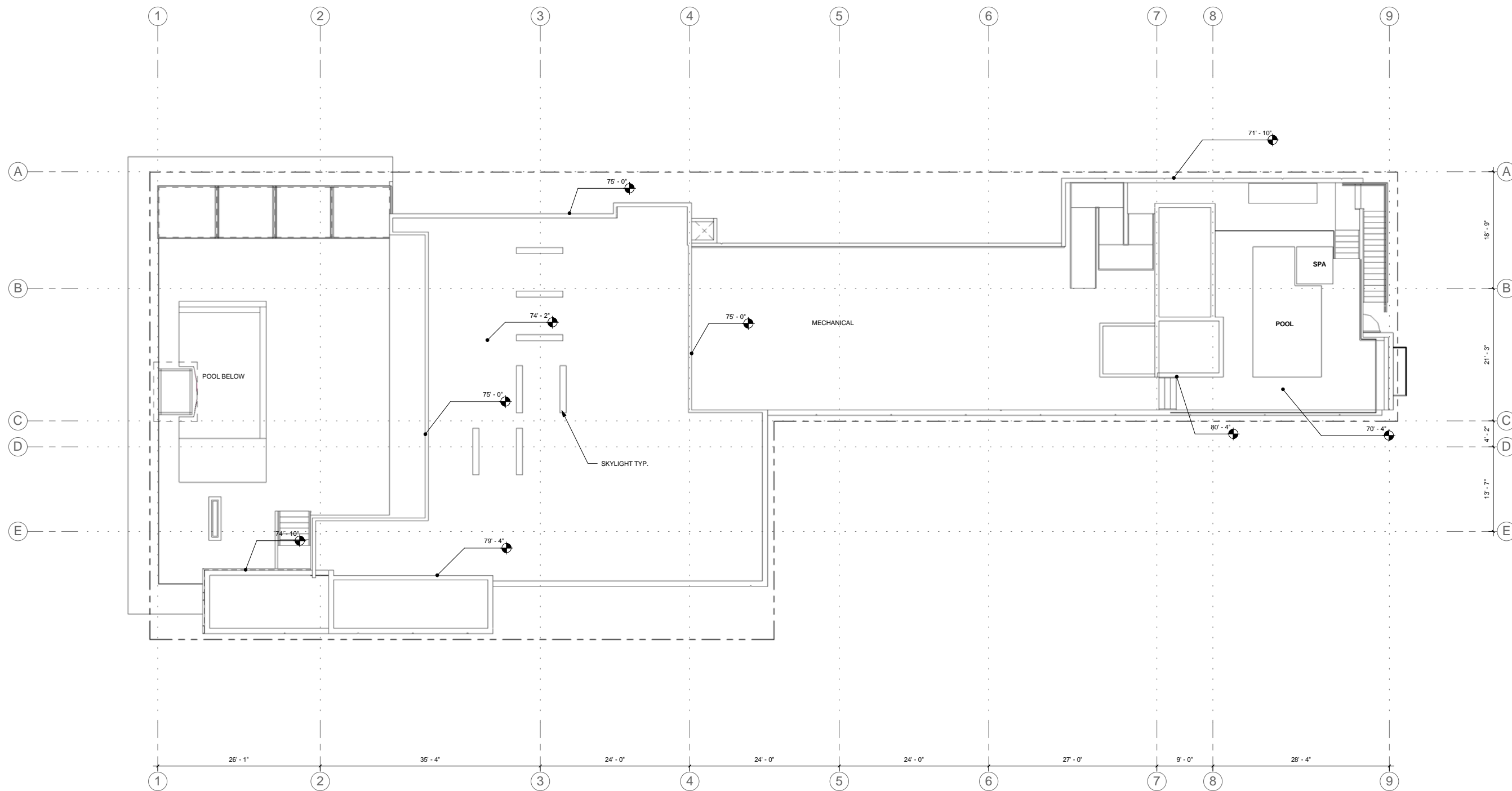
UPPER LEVEL SUITE FLOOR PLAN



ISSUED FOR:	DATE:
CSD SUBMITTAL	10.30.13
CSD RE-SUBMITTAL	02.03.14
CSD RE-SUBMITTAL	08.12.14



AWBREY
COOK
MCGILL



DEVELOPER



HOTEL GROUPS



PROJECT

CONCEPT DESIGN
AC HOTEL - GASLAMP
SAN DIEGO, CALIFORNIA, 92101

SHEET

ROOF PLAN

SHEET NO.

15

ISSUED FOR:	DATE:
CSD SUBMITTAL	10.30.13
CSD RE-SUBMITTAL	02.03.14
CSD RE-SUBMITTAL	08.12.14



ROOF PLAN



AWBREY
 COOK
 MCGILL

DEVELOPER



HOTEL GROUPS



PROJECT

CONCEPT DESIGN
AC HOTEL - GASLAMP
SAN DIEGO, CALIFORNIA, 92101

SHEET

EXTERIOR ELEVATIONS

SHEET NO.

16



KEYNOTES

- | | | |
|--|---|--|
| 1 ANODIZED ALUMINUM STOREFRONT
COLOR: BLACK | 8 SMOOTH PLASTER PAINTED
COLOR: SW2822 DOWNING SAND | 15 CANVAS AWNING
SUNBRELLA, COLOR: BLACK CHERRY |
| 2 1" CLEAR INSULATED GLAZING | 9 SMOOTH PLASTER CORNICE PAINTED
COLOR: SW0023 PEWTER TANKARD | 16 METAL GUARDRAIL PAINTED, TO MATCH 1 |
| 3 NATURAL SMOOTH FINISH STONE CLADDING
ARRISCRAFT, COLOR: GINGER, | 10 SMOOTH PLASTER PAINTED
COLOR: SW0038 LIBRARY PEWTER | 17 BUTT JOINTED CLEAR GLASS GUARDRAIL |
| 4 PRE CAST CONCRETE BASE
DAVIS COLORS, COLOR: SIERRA 61078 | 11 SMOOTH PLASTER PAINTED
COLOR: SW6127 IVOIRE | 18 ROLL-UP METAL DOOR PAINTED WITH TRANSLUCENT
GLASS LIGHTS |
| 5 AWNING PAINTED
ATAS STEEL, COLOR: HARTFORD GREEN | 12 EXISTING BRICK FACADE PAINTED
COLOR: SW2853 COLONIAL YELLOW | |
| 6 SMOOTH PLASTER PAINTED
COLOR: SW0050 CLASSIC LIGHT BUFF | 13 EXISTING BRICK FACADE PAINTED
COLOR: SW2813 DOWNING STRAW | |
| 7 NOT USED | 14 CANVAS AWNING
SUNBRELLA, COLOR: HAMLOCK TWEED | |

NOTE:
ALL WINDOWS SHALL BE RECESSED MINIMUM 4
INCHES.

5TH AVENUE ELEVATION (WEST)



ISSUED FOR:	DATE:
CSD SUBMITTAL	10.30.13
CSD RE-SUBMITTAL	02.03.14
CSD RE-SUBMITTAL	08.12.14



AWBREY
COOK
MCGILL

DEVELOPER



HOTEL GROUPS



PROJECT

CONCEPT DESIGN
AC HOTEL - GASLAMP
SAN DIEGO, CALIFORNIA, 92101

SHEET

EXTERIOR ELEVATIONS

SHEET NO.

17



AWBREY
COOK
MCGILL



EXISTING FACADE



6TH AVENUE ELEVATION (EAST)



KEYNOTES

- | | |
|--|---|
| 1 ANODIZED ALUMINUM STOREFRONT
COLOR: BLACK | 8 SMOOTH PLASTER PAINTED
COLOR: SW2822 DOWNING SAND |
| 2 1" CLEAR INSULATED GLAZING | 9 SMOOTH PLASTER CORNICE PAINTED
COLOR: SW0023 PEWTER TANKARD |
| 3 NATURAL SMOOTH FINISH STONE CLADDING
ARRISCRAFT, COLOR: GINGER, | 10 SMOOTH PLASTER PAINTED
COLOR: SW0038 LIBRARY PEWTER |
| 4 PRE CAST CONCRETE BASE
DAVIS COLORS, COLOR: SIERRA 61078 | 11 SMOOTH PLASTER PAINTED
COLOR: SW6127 IVOIRE |
| 5 AWNING PAINTED
ATAS STEEL, COLOR: HARTFORD GREEN | 12 EXISTING BRICK FACADE PAINTED
COLOR: SW2853 COLONIAL YELLOW |
| 6 SMOOTH PLASTER PAINTED
COLOR: SW0050 CLASSIC LIGHT BUFF | 13 EXISTING BRICK FACADE PAINTED
COLOR: SW2813 DOWNING STRAW |
| 7 NOT USED | 14 CANVAS AWNING
SUNBRELLA, COLOR: HAMLOCK TWEED |

- | |
|--|
| 15 CANVAS AWNING
SUNBRELLA, COLOR: BLACK CHERRY |
| 16 METAL GUARDRAIL PAINTED, TO MATCH 1 |
| 17 BUTT JOINTED CLEAR GLASS GUARDRAIL |
| 18 ROLL-UP METAL DOOR PAINTED WITH TRANSLUCENT
GLASS LIGHTS |

NOTE:
ALL WINDOWS SHALL BE RECESSED MINIMUM 4
INCHES.

ISSUED FOR:	DATE:
CSD SUBMITTAL	10.30.13
CSD RE-SUBMITTAL	02.03.14
CSD RE-SUBMITTAL	08.12.14

DEVELOPER



HOTEL GROUPS



PROJECT

CONCEPT DESIGN
AC HOTEL - GASLAMP
SAN DIEGO, CALIFORNIA, 92101

SHEET

EXTERIOR ELEVATIONS

SHEET NO.

18



KEYNOTES

- | | | |
|--|---|--|
| 1 ANODIZED ALUMINUM STOREFRONT
COLOR: BLACK | 8 SMOOTH PLASTER PAINTED
COLOR: SW2822 DOWNING SAND | 15 CANVAS AWNING
SUNBRELLA, COLOR: BLACK CHERRY |
| 2 1" CLEAR INSULATED GLAZING | 9 SMOOTH PLASTER CORNICE PAINTED
COLOR: SW0023 PEWTER TANKARD | 16 METAL GUARDRAIL PAINTED, TO MATCH 1 |
| 3 NATURAL SMOOTH FINISH STONE CLADDING
ARRISCRAFT, COLOR: GINGER, | 10 SMOOTH PLASTER PAINTED
COLOR: SW0038 LIBRARY PEWTER | 17 BUTT JOINTED CLEAR GLASS GUARDRAIL |
| 4 PRE CAST CONCRETE BASE
DAVIS COLORS, COLOR: SIERRA 61078 | 11 SMOOTH PLASTER PAINTED
COLOR: SW6127 IVOIRE | 18 ROLL-UP METAL DOOR PAINTED WITH TRANSLUCENT
GLASS LIGHTS |
| 5 AWNING PAINTED
ATAS STEEL, COLOR: HARTFORD GREEN | 12 EXISTING BRICK FACADE PAINTED
COLOR: SW2853 COLONIAL YELLOW | |
| 6 SMOOTH PLASTER PAINTED
COLOR: SW0050 CLASSIC LIGHT BUFF | 13 EXISTING BRICK FACADE PAINTED
COLOR: SW2813 DOWNING STRAW | |
| 7 NOT USED | 14 CANVAS AWNING
SUNBRELLA, COLOR: HAMLOCK TWEED | |

NOTE:
ALL WINDOWS SHALL BE RECESSED MINIMUM 4
INCHES.

SOUTH ELEVATION



ISSUED FOR:	DATE:
CSD SUBMITTAL	10.30.13
CSD RE-SUBMITTAL	02.03.14
CSD RE-SUBMITTAL	08.12.14



AWBREY
COOK
MCGILL

DEVELOPER



HOTEL GROUPS



PROJECT

CONCEPT DESIGN
AC HOTEL - GASLAMP
SAN DIEGO, CALIFORNIA, 92101

SHEET

EXTERIOR ELEVATIONS

SHEET NO.

19



KEYNOTES

- | | | |
|--|---|--|
| 1 ANODIZED ALUMINUM STOREFRONT
COLOR: BLACK | 8 SMOOTH PLASTER PAINTED
COLOR: SW2822 DOWNING SAND | 15 CANVAS AWNING
SUNBRELLA, COLOR: BLACK CHERRY |
| 2 1" CLEAR INSULATED GLAZING | 9 SMOOTH PLASTER CORNICE PAINTED
COLOR: SW0023 PEWTER TANKARD | 16 METAL GUARDRAIL PAINTED, TO MATCH 1 |
| 3 NATURAL SMOOTH FINISH STONE CLADDING
ARRISCRAFT, COLOR: GINGER. | 10 SMOOTH PLASTER PAINTED
COLOR: SW0038 LIBRARY PEWTER | 17 BUTT JOINTED CLEAR GLASS GUARDRAIL |
| 4 PRE CAST CONCRETE BASE
DAVIS COLORS, COLOR: SIERRA 61078 | 11 SMOOTH PLASTER PAINTED
COLOR: SW6127 IVOIRE | 18 ROLL-UP METAL DOOR PAINTED WITH TRANSLUCENT
GLASS LIGHTS |
| 5 AWNING PAINTED
ATAS STEEL, COLOR: HARTFORD GREEN | 12 EXISTING BRICK FACADE PAINTED
COLOR: SW2853 COLONIAL YELLOW | |
| 6 SMOOTH PLASTER PAINTED
COLOR: SW0050 CLASSIC LIGHT BUFF | 13 EXISTING BRICK FACADE PAINTED
COLOR: SW2813 DOWNING STRAW | |
| 7 NOT USED | 14 CANVAS AWNING
SUNBRELLA, COLOR: HAMLOCK TWEED | |

NOTE:
ALL WINDOWS SHALL BE RECESSED MINIMUM 4
INCHES.

NORTH ELEVATION



ISSUED FOR:	DATE:
CSD SUBMITTAL	10.30.13
CSD RE-SUBMITTAL	02.03.14
CSD RE-SUBMITTAL	08.12.14



AWBREY
COOK
MCGILL

DEVELOPER



HOTEL GROUPS



PROJECT

CONCEPT DESIGN
AC HOTEL - GASLAMP
SAN DIEGO, CALIFORNIA, 92101

SHEET

ENLARGED EXTERIOR ELEVATIONS

SHEET NO.

20

AWBREY
COOK
MCGILL



KEYNOTES

- | | | |
|--|---|--|
| 1 ANODIZED ALUMINUM STOREFRONT
COLOR: BLACK | 8 SMOOTH PLASTER PAINTED
COLOR: SW2822 DOWNING SAND | 15 CANVAS AWNING
SUNBRELLA, COLOR: BLACK CHERRY |
| 2 1" CLEAR INSULATED GLAZING | 9 SMOOTH PLASTER CORNICE PAINTED
COLOR: SW0023 PEWTER TANKARD | 16 METAL GUARDRAIL PAINTED, TO MATCH 1 |
| 3 NATURAL SMOOTH FINISH STONE CLADDING
ARRISCRAFT, COLOR: GINGER, | 10 SMOOTH PLASTER PAINTED
COLOR: SW0038 LIBRARY PEWTER | 17 BUTT JOINTED CLEAR GLASS GUARDRAIL |
| 4 PRE CAST CONCRETE BASE
DAVIS COLORS, COLOR: SIERRA 61078 | 11 SMOOTH PLASTER PAINTED
COLOR: SW6127 IVOIRE | 18 ROLL-UP METAL DOOR PAINTED WITH TRANSLUCENT
GLASS LIGHTS |
| 5 AWNING PAINTED
ATAS STEEL, COLOR: HARTFORD GREEN | 12 EXISTING BRICK FACADE PAINTED
COLOR: SW2853 COLONIAL YELLOW | |
| 6 SMOOTH PLASTER PAINTED
COLOR: SW0050 CLASSIC LIGHT BUFF | 13 EXISTING BRICK FACADE PAINTED
COLOR: SW2813 DOWNING STRAW | |
| 7 NOT USED | 14 CANVAS AWNING
SUNBRELLA, COLOR: HAMLOCK TWEED | |

NOTE:
ALL WINDOWS SHALL BE RECESSED MINIMUM 4
INCHES.

5TH AVENUE ELEVATION (WEST)



ISSUED FOR:	DATE:
CSD SUBMITTAL	10.30.13
CSD RE-SUBMITTAL	02.03.14
CSD RE-SUBMITTAL	08.12.14

DEVELOPER



HOTEL GROUPS



PROJECT

CONCEPT DESIGN
AC HOTEL - GASLAMP
SAN DIEGO, CALIFORNIA, 92101

SHEET

ENLARGED EXTERIOR ELEVATIONS

SHEET NO.

21



KEYNOTES

- | | | |
|--|---|--|
| 1 ANODIZED ALUMINUM STOREFRONT
COLOR: BLACK | 8 SMOOTH PLASTER PAINTED
COLOR: SW2822 DOWNING SAND | 15 CANVAS AWNING
SUNBRELLA, COLOR: BLACK CHERRY |
| 2 1" CLEAR INSULATED GLAZING | 9 SMOOTH PLASTER CORNICE PAINTED
COLOR: SW0023 PEWTER TANKARD | 16 METAL GUARDRAIL PAINTED, TO MATCH 1 |
| 3 NATURAL SMOOTH FINISH STONE CLADDING
ARRISCRAFT, COLOR: GINGER. | 10 SMOOTH PLASTER PAINTED
COLOR: SW0038 LIBRARY PEWTER | 17 BUTT JOINTED CLEAR GLASS GUARDRAIL |
| 4 PRE CAST CONCRETE BASE
DAVIS COLORS, COLOR: SIERRA 61078 | 11 SMOOTH PLASTER PAINTED
COLOR: SW6127 IVOIRE | 18 ROLL-UP METAL DOOR PAINTED WITH TRANSLUCENT
GLASS LIGHTS |
| 5 AWNING PAINTED
ATAS STEEL, COLOR: HARTFORD GREEN | 12 EXISTING BRICK FACADE PAINTED
COLOR: SW2853 COLONIAL YELLOW | |
| 6 SMOOTH PLASTER PAINTED
COLOR: SW0050 CLASSIC LIGHT BUFF | 13 EXISTING BRICK FACADE PAINTED
COLOR: SW2813 DOWNING STRAW | |
| 7 NOT USED | 14 CANVAS AWNING
SUNBRELLA, COLOR: HAMLOCK TWEED | |

NOTE:
ALL WINDOWS SHALL BE RECESSED MINIMUM 4
INCHES.

6TH AVENUE ELEVATION (EAST)



ISSUED FOR:	DATE:
CSD SUBMITTAL	10.30.13
CSD RE-SUBMITTAL	02.03.14
CSD RE-SUBMITTAL	08.12.14



AWBREY
COOK
MCGILL



DEVELOPER



HOTEL GROUPS



PROJECT

CONCEPT DESIGN
AC HOTEL - GASLAMP
SAN DIEGO, CALIFORNIA, 92101

SHEET

5TH AVE. PERSPECTIVE

SHEET NO.

22

ISSUED FOR:	DATE:
CSD SUBMITTAL	10.30.13
CSD RE-SUBMITTAL	02.03.14
CSD RE-SUBMITTAL	08.12.14



AWBREY
 COOK
 MCGILL



DEVELOPER



HOTEL GROUPS



PROJECT

CONCEPT DESIGN
AC HOTEL - GASLAMP
SAN DIEGO, CALIFORNIA, 92101

SHEET

5TH AVENUE PERSPECTIVE

SHEET NO.

23

ISSUED FOR:	DATE:
CSD SUBMITTAL	10.30.13
CSD RE-SUBMITTAL	02.03.14
CSD RE-SUBMITTAL	08.12.14



**AWBREY
 COOK
 MCGILL**



DEVELOPER



HOTEL GROUPS



PROJECT

CONCEPT DESIGN
 AC HOTEL - GASLAMP
 SAN DIEGO, CALIFORNIA, 92101

SHEET

6TH AVENUE PERSPECTIVE

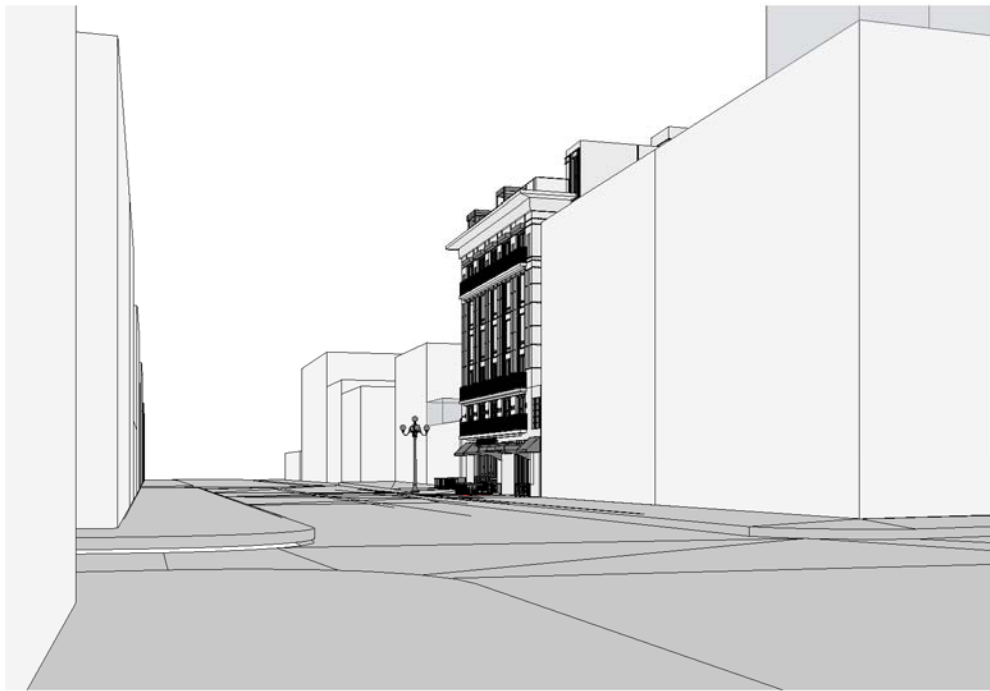
SHEET NO.

24

ISSUED FOR:	DATE:
CSD SUBMITTAL	10.30.13
CSD RE-SUBMITTAL	02.03.14
CSD RE-SUBMITTAL	08.12.14



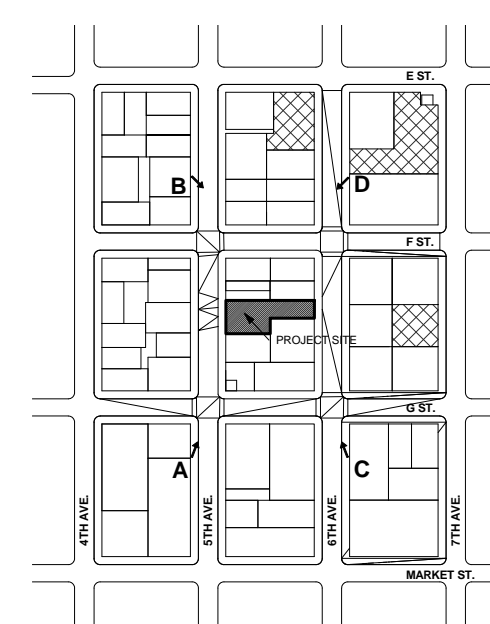
AWBREY
 COOK
 MCGILL



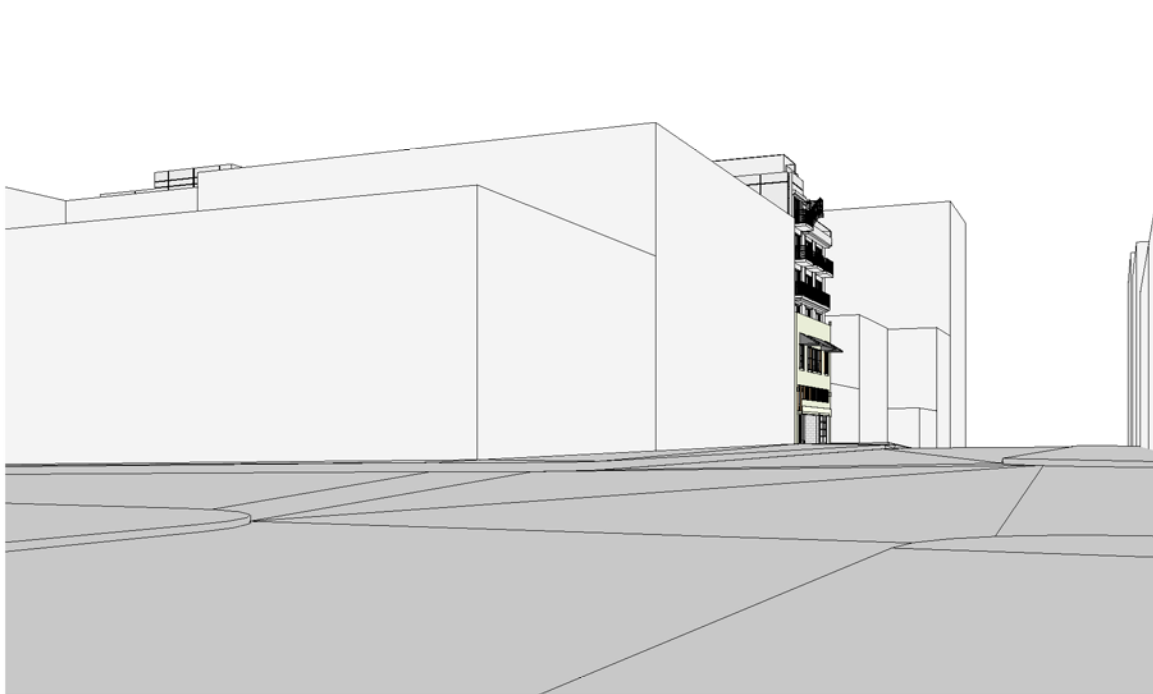
A - NORTH EAST VIEW - 5TH AVENUE



B - SOUTH EAST VIEW - 5TH AVENUE



KEYPLAN



C - NORTH WEST VIEW - 6TH AVENUE



D - SOUTH WEST VIEW - 6TH AVENUE

DEVELOPER



HOTEL GROUPS



PROJECT

CONCEPT DESIGN
AC HOTEL - GASLAMP
SAN DIEGO, CALIFORNIA, 92101

SHEET

DISTANCE VIEWS

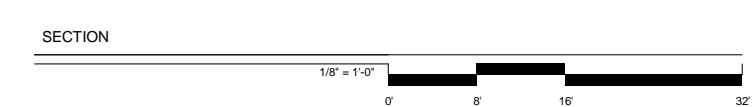
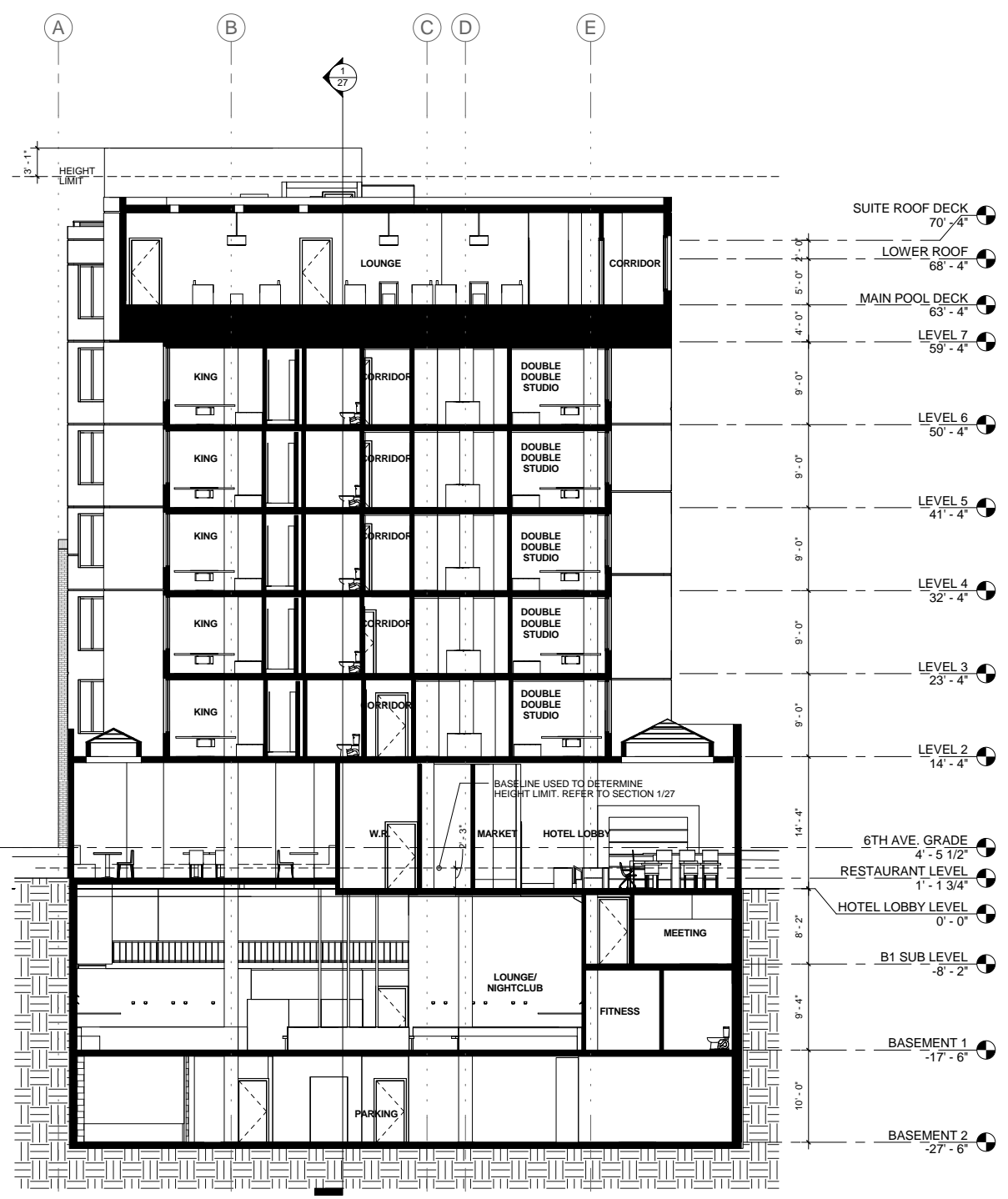
SHEET NO.

25

ISSUED FOR:	DATE:
CSD SUBMITTAL	10.30.13
CSD RE-SUBMITTAL	02.03.14
CSD RE-SUBMITTAL	08.12.14



AWBREY
 COOK
 MCGILL



ISSUED FOR:	DATE:
CSD SUBMITTAL	10.30.13
CSD RE-SUBMITTAL	02.03.14
CSD RE-SUBMITTAL	08.12.14

DEVELOPER



HOTEL GROUPS



PROJECT

CONCEPT DESIGN
AC HOTEL - GASLAMP
SAN DIEGO, CALIFORNIA, 92101

SHEET

SECTIONS

SHEET NO.

26



AWBREY
COOK
MCGILL

DEVELOPER



HOTEL GROUPS



PROJECT

CONCEPT DESIGN

AC HOTEL - GASLAMP

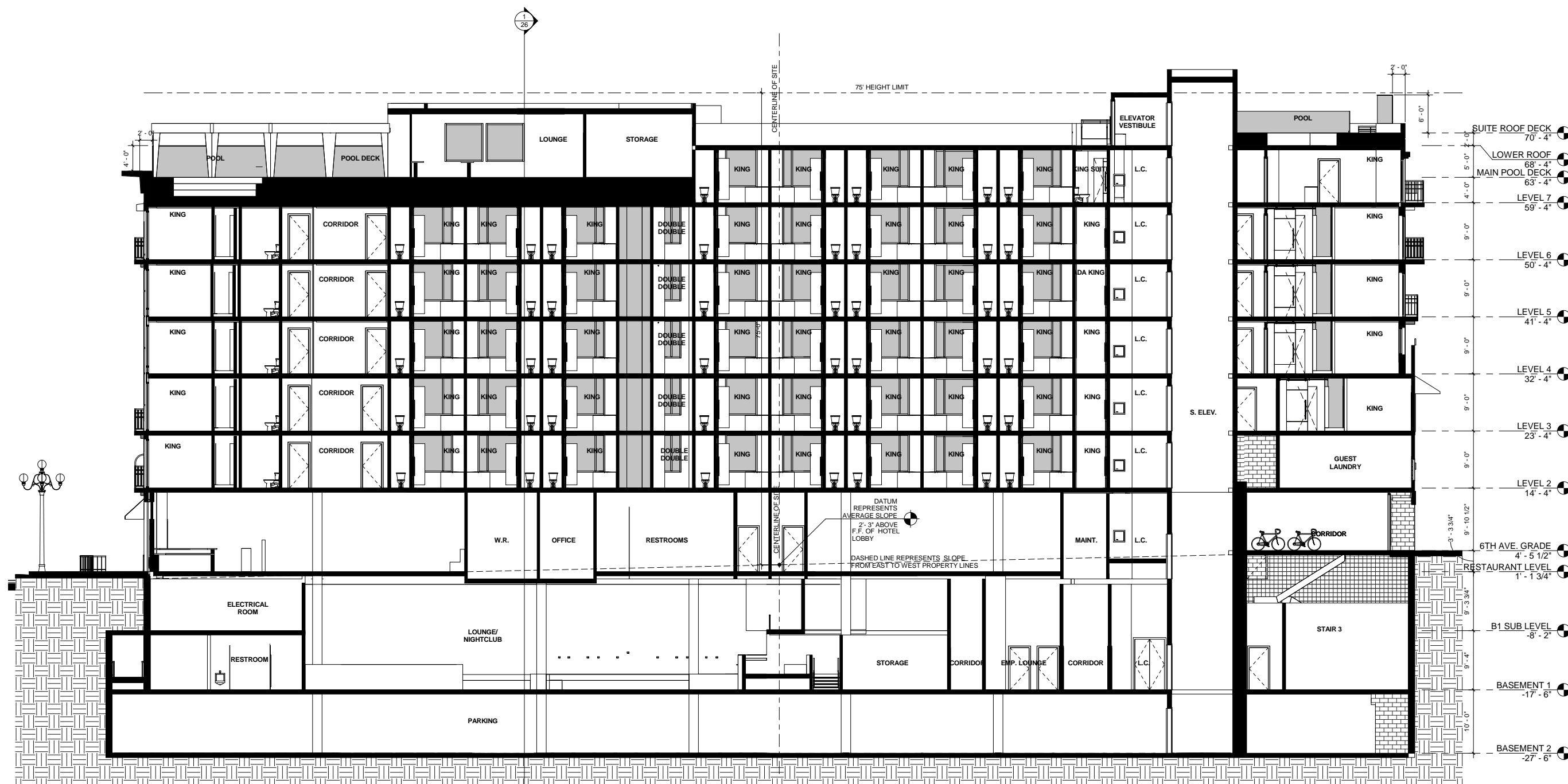
SAN DIEGO, CALIFORNIA, 92101

SHEET

SECTIONS

SHEET NO.

27



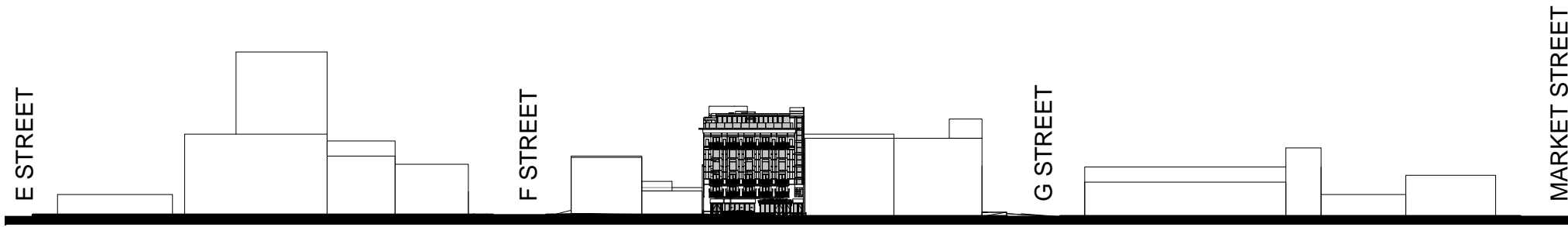
ISSUED FOR:	DATE:
CSD SUBMITTAL	10.30.13
CSD RE-SUBMITTAL	02.03.14
CSD RE-SUBMITTAL	08.12.14

SECTION

1/8" = 1'-0"

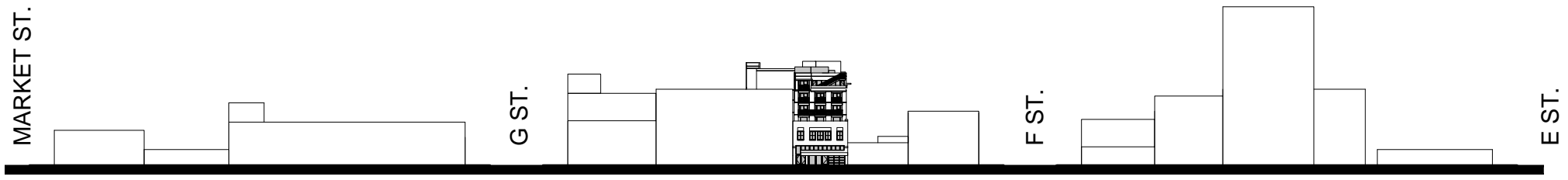


AWBREY
COOK
MCGILL



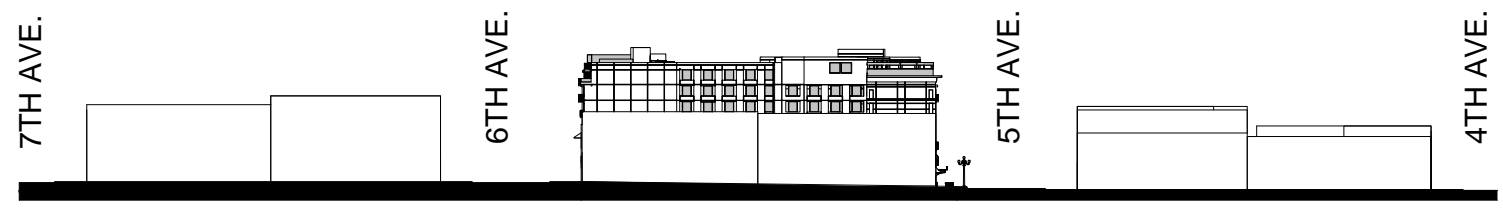
1

WEST STREET ELEVATION (5TH AVE.)



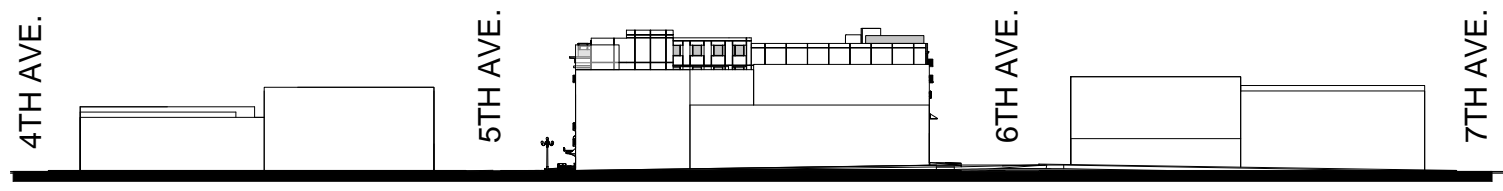
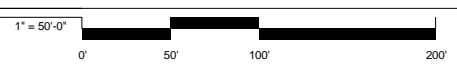
2

EAST STREET ELEVATION (6TH AVE.)



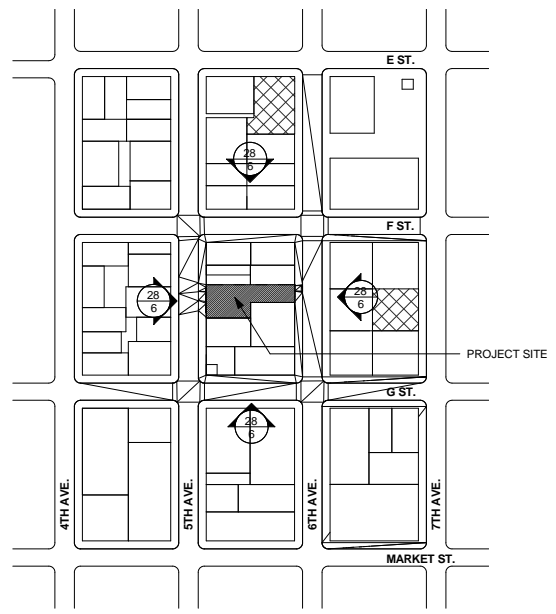
3

NORTH STREET ELEVATION (F ST.)



4

SOUTH STREET ELEVATION (G ST.)



VACINITY KEYPLAN

ISSUED FOR:	DATE:
CSD SUBMITTAL	10.30.13
CSD RE-SUBMITTAL	02.03.14
CSD RE-SUBMITTAL	08.12.14

DEVELOPER



HOTEL GROUPS



PROJECT

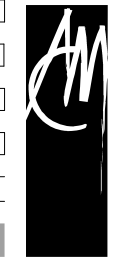
CONCEPT DESIGN
AC HOTEL - GASLAMP
SAN DIEGO, CALIFORNIA, 92101

SHEET

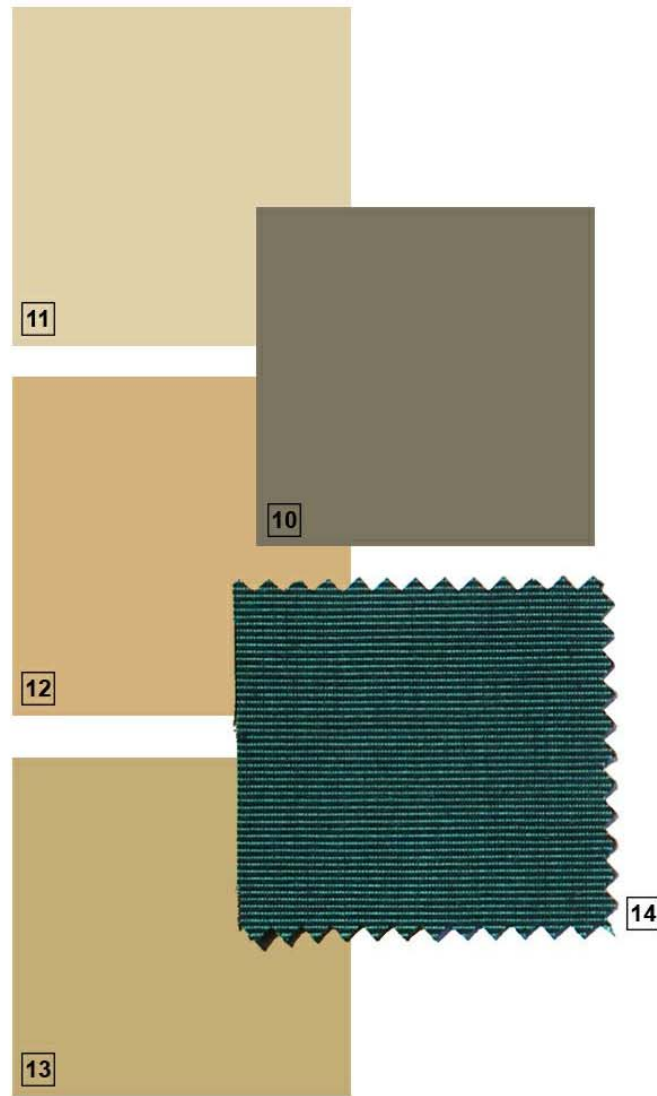
VACINITY ELEVATIONS

SHEET NO.

28



AWBREY
COOK
MCGILL



6TH AVENUE FINISHES



COMMON FINISHES



5TH AVENUE FINISHES

- 1 ANODIZED ALUMINUM STOREFRONT
COLOR: BLACK
- 2 1" CLEAR INSULATED GLAZING
- 3 NATURAL SMOOTH FINISH STONE CLADDING
ARRISCRAFT, COLOR: GINGER,
- 4 PRE CAST CONCRETE BASE
DAVIS COLORS, COLOR: SIERRA 61078
- 5 AWNING PAINTED
ATAS STEEL, COLOR: HARTFORD GREEN
- 6 SMOOTH PLASTER PAINTED
COLOR: SW0050 CLASSIC LIGHT BUFF
- 7 NOT USED
- 8 SMOOTH PLASTER PAINTED
COLOR: SW2822 DOWNING SAND
- 9 SMOOTH PLASTER CORNICE PAINTED
COLOR: SW0023 PEWTER TANKARD
- 10 SMOOTH PLASTER PAINTED
COLOR: SW0038 LIBRARY PEWTER
- 11 SMOOTH PLASTER PAINTED
COLOR: SW6127 IVOIRE
- 12 EXISTING BRICK FACADE PAINTED
COLOR: SW2853 COLONIAL YELLOW
- 13 EXISTING BRICK FACADE PAINTED
COLOR: SW2813 DOWNING STRAW
- 14 CANVAS AWNING
SUNBRELLA, COLOR: HAMLOCK TWEED
- 15 CANVAS AWNING
SUNBRELLA, COLOR: BLACK CHERRY
- 16 METAL GUARDRAIL PAINTED, TO MATCH 1
- 17 BUTT JOINTED CLEAR GLASS GUARDRAIL
- 18 ROLL-UP METAL DOOR PAINTED WITH TRANSLUCENT
GLASS LIGHTS

NOTE:
ALL WINDOWS SHALL BE RECESSED MINIMUM 4
INCHES.

ISSUED FOR:	DATE:
CSD SUBMITTAL	10.30.13
CSD RE-SUBMITTAL	02.03.14
CSD RE-SUBMITTAL	08.12.14

DEVELOPER



HOTEL GROUPS



PROJECT

CONCEPT DESIGN
AC HOTEL - GASLAMP
SAN DIEGO, CALIFORNIA, 92101

SHEET

MATERIAL BOARD

SHEET NO.

29



AWBREY
COOK
MCGILL