

# Skyline Hills Branch Library

City of San Diego, CA

K-14-5903-DB2-3





# DISCOVER YOUR NEXT CHAPTER

**DESIGN CONCEPT |** The Skyline-Paradise Hills community has seen a 60% growth in population over the past 40 years. Boasting one of the most diverse populations in San Diego, the Skyline Hills Branch library seeks to serve as a “gateway” and civic “signature” into a unique community that celebrates diversity and growth through education. In response, we developed our design mission to be centered in inspiring life-long learning through connections to knowledge and one another. DREAM, HOPE, INSPIRE. Weaving these concepts throughout our design will fulfill the community’s desire for a 21st Century library that celebrates community, rich language and a love of reading for pleasure.

**BALANCED AESTHETICS + FUNCTIONALITY |** The philosophical design response seeks to “Enriching the Human Experience”, understanding that learning and growth happen holistically through mind, body and spirit enrichment. Human senses of touch, sight, taste, smell and hearing will be stimulated through fragrant gardens, inspirational architecture, technologies, food service, creative learning space, interactive art, audiovisual stimulation and collaborative assembly space. The design aesthetic will be timeless inspirational design with cultural diversity celebrated through ethnic arts installations emphasizing the themes of “Dream-Hope-Inspire”.

The power of presence as a physical destination is achieved through the building’s orientation and site design. Presentation of a long building orientation creating a sweeping and inviting presence set back from Paradise Valley Road by a large artistically landscaped public plaza. Palm trees and landscaping placed along a curvilinear planting layout creates a tall vertical sign from afar, drawing the viewer’s eye inward. An eloquent entry plaza creates a civic attraction inviting patrons to experience the colors, textures, sights, smells, and inspirational art. The Dream, Hope, and Inspire theme are underlined and celebrated through a spattering

of historical leader’s inspirational quotes such as Martin Luther King, Jr.’s, M. Gandhi’s, and John F. Kennedy, and Cesar Chavez to promote inspiration, reflection and relaxation.

**CREATIVE OPTIMAL DESIGN |** The public plaza and landscape theme frame the building and create initial appeal and invitation to the site. The architecture expands the invitation and promotes inspiration, intrigue and excitement through its sweeping eloquent and elevating roof form. A curved roof promotes an inspiring and uplifting presence to the community promoting the theme of “Dream-Hope-Inspire”, while creating a powerful sense of place and civic pride.

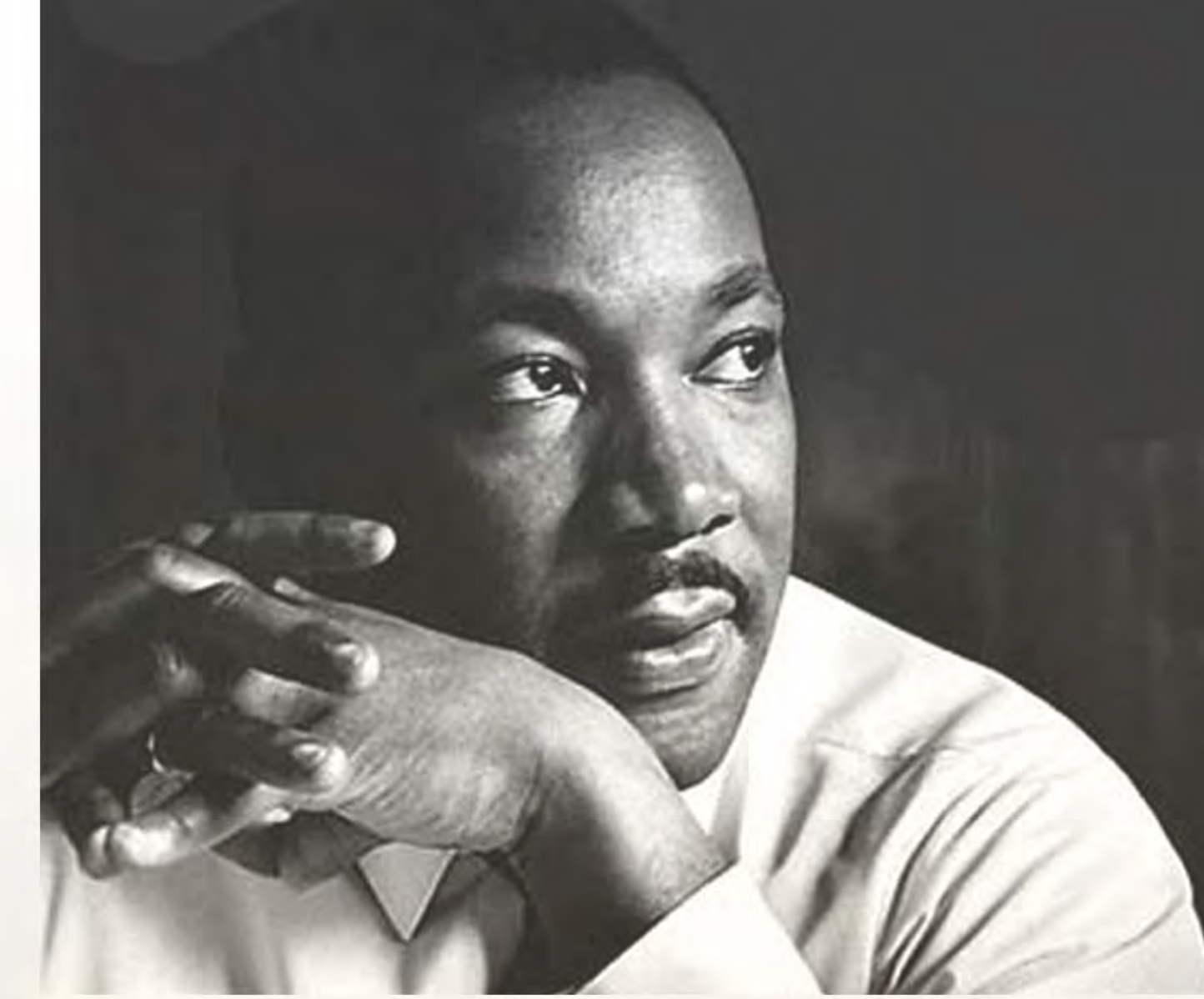
**ATTRACTIVE, FUNCTIONAL, COST EFFECTIVE + PRACTICAL |** Greeting patrons upon entry is a soaring public galleria space creating opportunity for cultural art display, public information, donation/gratitude plaques and way finding direction. The sweeping roof line draws your eye upward into the library area, culminating at the north facing glass wall celebrating daylight and outdoor activity area beyond. The floating roof will be patterned with prismatic skylights, reflecting daylight throughout the library reading areas promoting controlled daylight resulting in a pleasant and natural experience and reducing artificial lighting demands. Additionally, the lobby serves as the central access point for the multi-purpose/community room, back of house functions and primary library activity area.

**Public Art |** The theme of Dream-Hope-Inspire continues to be underscored through opportunities for the display of public art with a focus on the celebration of ethnic and community culture. Positioned within the lobby galleria, the eastern wall creates a lineal palette extending from the lobby forward to the northern corner of the library. Elevated overhangs above the enclosed activity spaces will create graphic opportunities for continued art, signage and thematic display.

# SKYLINE HILLS LIBRARY

## LANDSCAPE PLANTING LEGEND:

SYMBOL	BOTANICAL NAME	COMMON NAME	SIZE
	TREES		
	PARKING LOT TREE GEJERA PARVIFOLIA	AUSTRALIAN WILLOW	36' BOX
	STREET TREE ARBUTUS 'MARINA'	MARINA STRAWBERRY TREE	24' BOX
	ACCENT TREE BRACHYCHITON POPUNEUS	AUSTRALIAN BOTTLE TREE	48' BOX
	PALM WASHINGTONIA ROBUSTA	MEXICAN FAN PALM	8' BTH
	VINES		



# DREAM



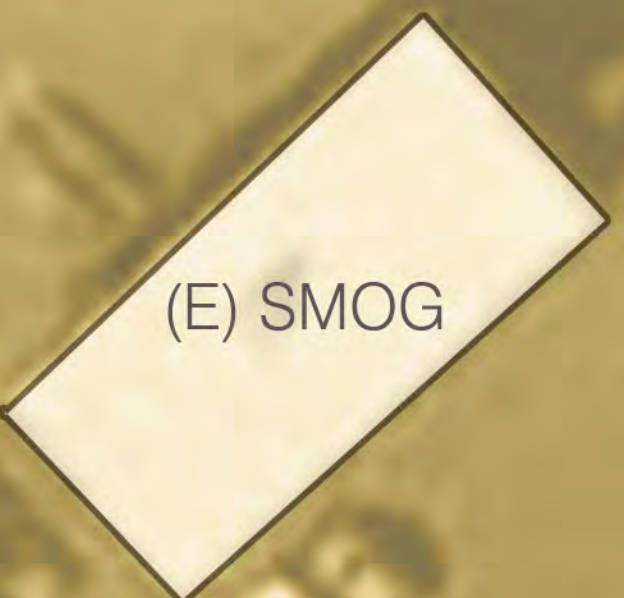
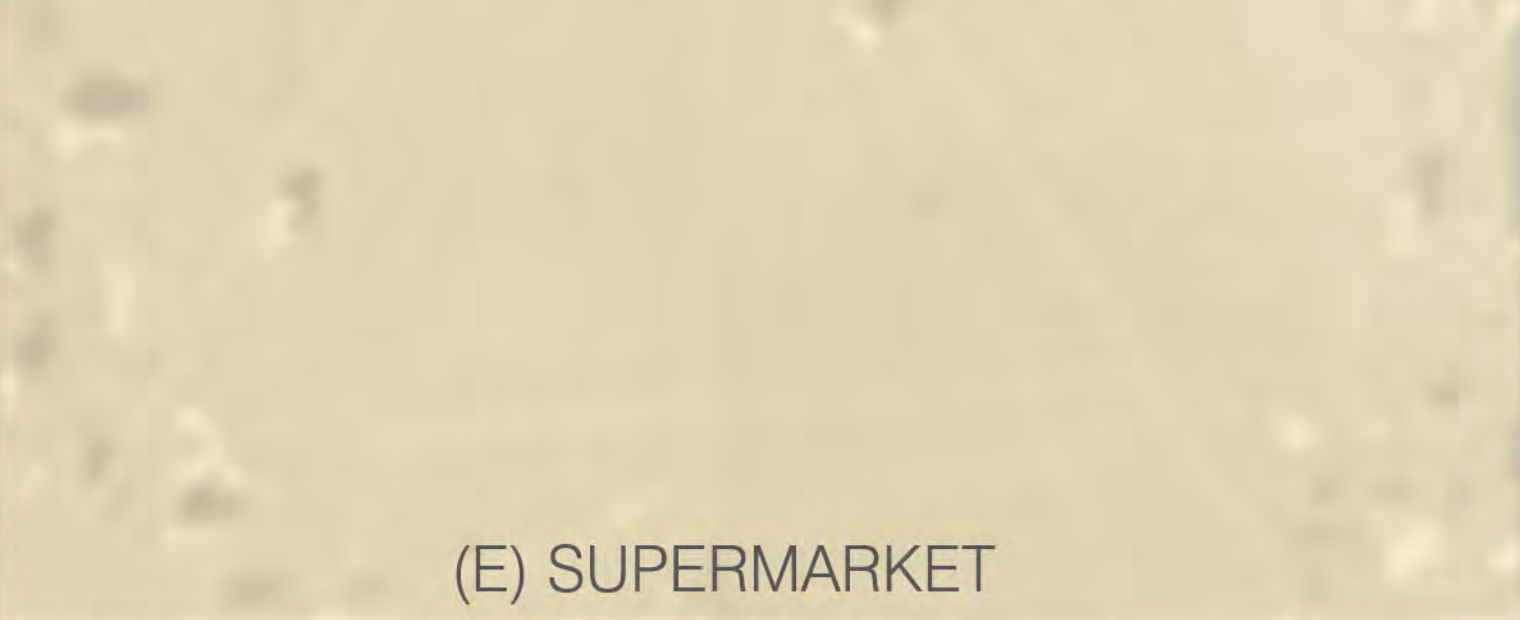
# HOPE



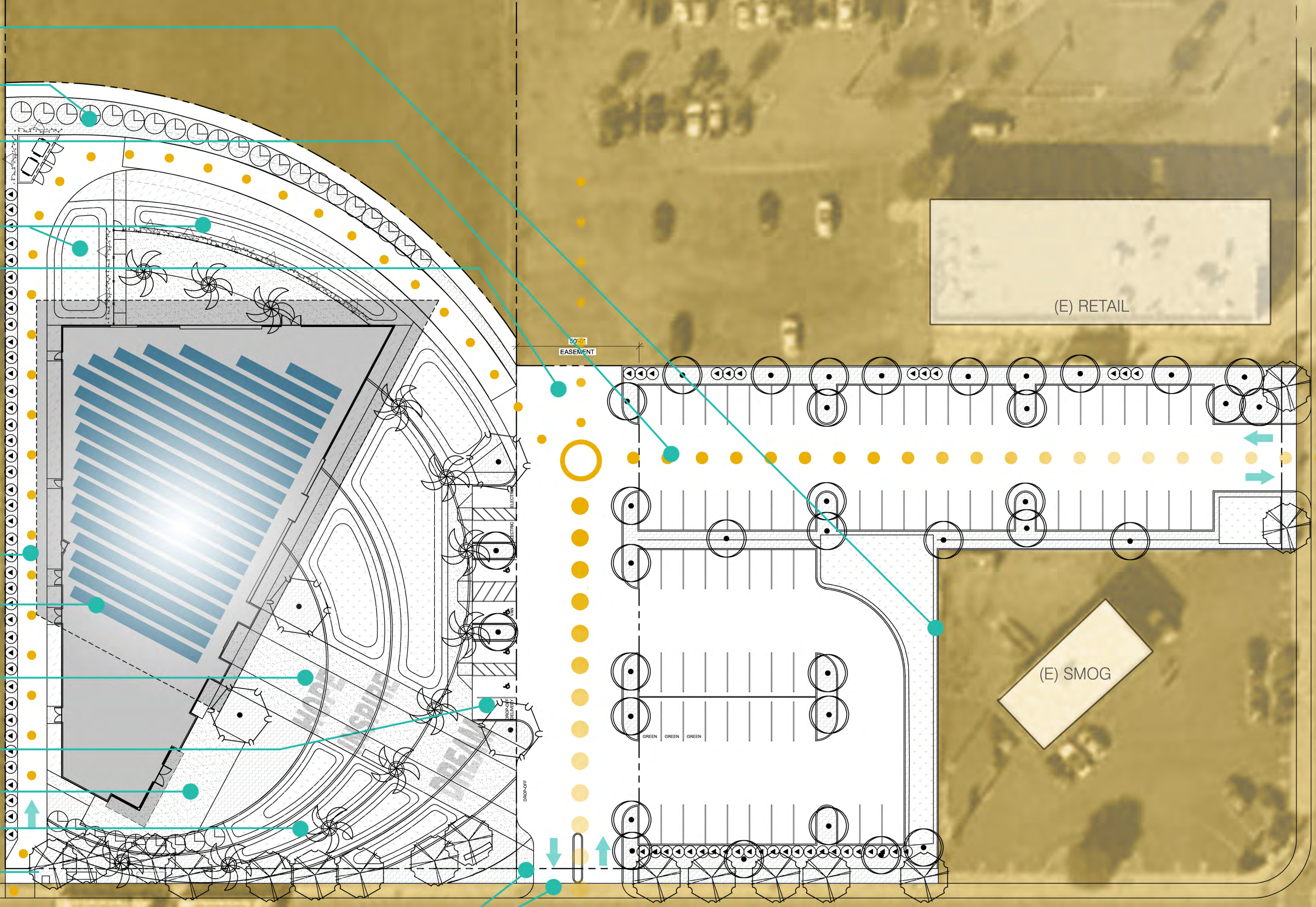
# INSPIRE



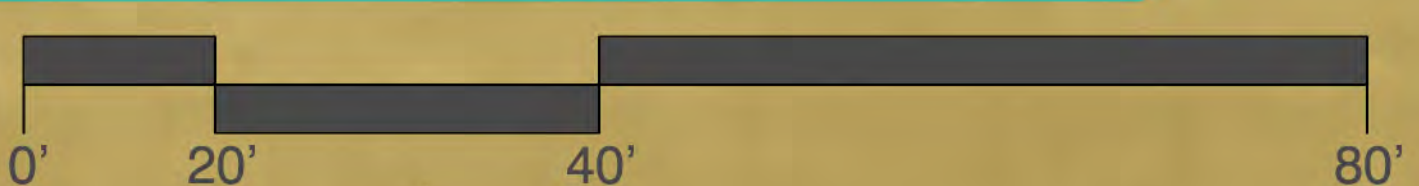
	MACFEDYENA UNGUIS-CATI	CAT'S CLAW	5 GAL
	SHRUBS	TOYON	5 GAL
	HETEROMELES ARBUTIFOLIA	LEMON BOTTLEBRUSH	5 GAL
	CALLISTOMON CITRINUS	LEMON BOTTLEBRUSH	5 GAL
	GROUNDCOVERS		
	SENECIO MADRALISCAE	BLUE CHALK STICK	1 GAL
	BIO-BASIN: 50/50 MIX		
	CAREX TUMULICOLA	BEREKELY SEDGE	6" POTS
	ELYMUS GLAUCUS	BLUE WILD RYE	6" POTS
	BARK MULCH		
	SUPREME 'WALK-ON'		



- BIO-SWALE WITH TALL SHRUBS TO SCREEN ADJACENT PROPERTY
- LANDSCAPE BUFFER BETWEEN LIBRARY AND ADJACENT VACANT LOT
- PARKING AREA 90 TOTAL SPACES INCLUDING 2 ELECTRIC VEHICLE CHARGING STATIONS AND 4 ACCESSIBLE STALLS
- BIO-SWALE STORMWATER RETENTION LANDSCAPING
- MAINTAINED EASEMENT TO ADJACENT PROPERTY
- PERIMETER LOOP ACCESS ROAD
- PV PANEL ARRAY ON ROOFTOP
- MAIN ENTRY PATH WITH INSPIRATIONAL QUOTES INTEGRATED INTO PAVING
- BOOK DROP OFF/DELIVERY AND ACCESSIBLE PARKING
- MULTI-PURPOSE ROOM OUTDOOR PATIO SPACE
- BIO-SWALE STORMWATER RETENTION LANDSCAPING
- LANDSCAPE TREES, SEE CHART FOR SPECIES
- ACCESSIBLE PATH TO PUBLIC ROAD AND BUS STOP
- MAIN VEHICULAR ENTRY INTO THE LIBRARY



SITE PLAN - 1" = 20'-0"



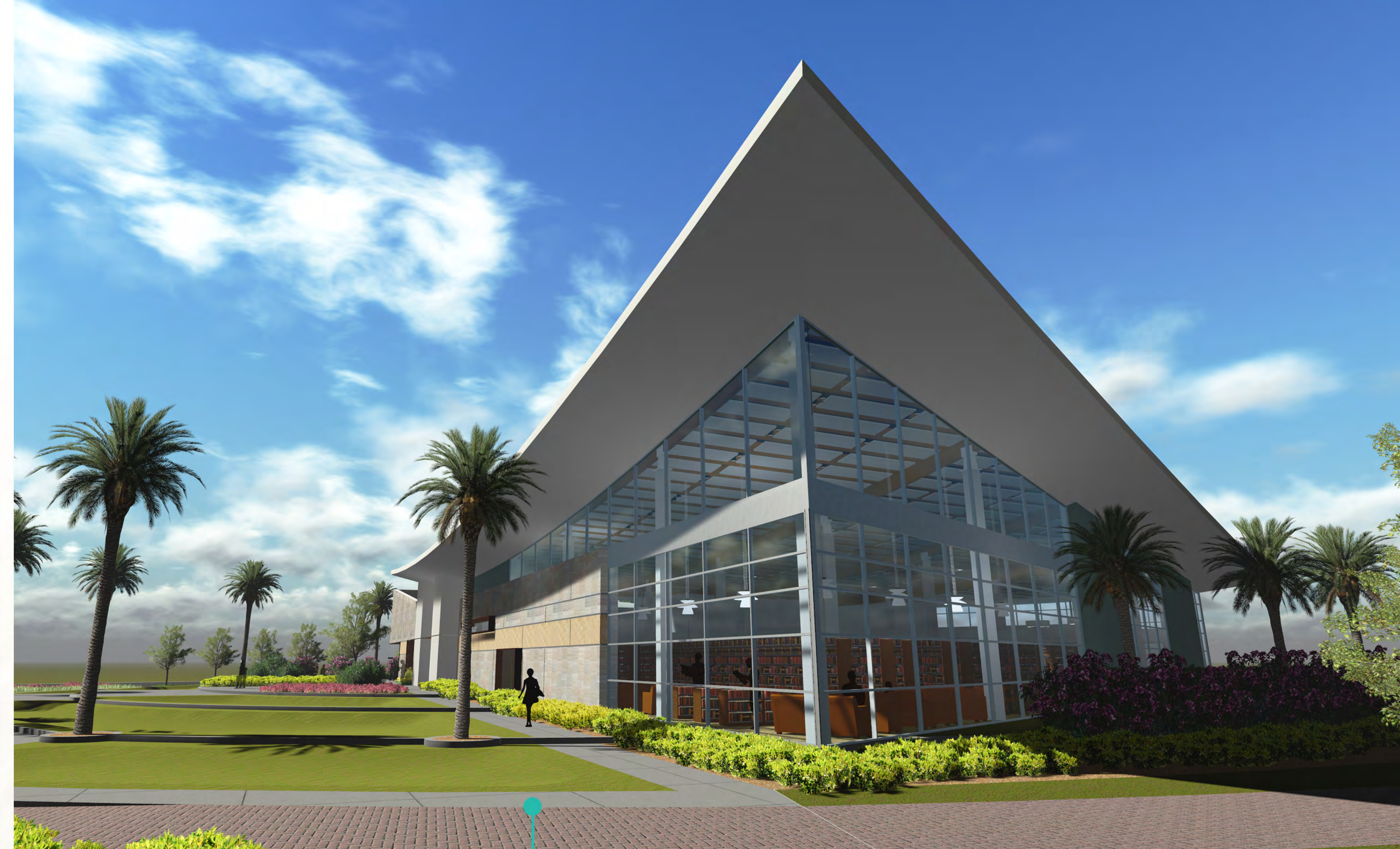
PARADISE VALLEY ROAD

S. MEADOWBROOK DRIVE





AERIAL PERSPECTIVE FROM PARKING LOT



PERSPECTIVE OF NORTHEAST CORNER



INTERIOR PERSPECTIVE OF CHILDREN'S AREA



PERSPECTIVE OF LIBRARY ENTRY FROM EAST



INTERIOR PERSPECTIVE OF YOUNG ADULT AREA





AERIAL PERSPECTIVE OF LIBRARY ENTRY



INTERIOR PERSPECTIVE OF RECEPTION DESK WITH COLLECTIONS BEYOND



PERSPECTIVE OF EAST FACADE FROM NORTHEAST

**INTERIOR ARCHITECTURE** | A timeless design theme is achieved through unique interior architecture and the use of materials/furniture and colors in the right proportion to enhance the mind, body, and spirit while introducing warmth, comfort, and whimsy. The interior theme continues to celebrate the design concept of DREAM, HOPE, INSPIRE with a particular emphasis on elements of discovery in the children's area. Elements in support of the design concept include a rotating art program display, inspiring and whimsy transition to the Children's program area, way finding elements including suspended art sculptures in the lobby and great room, stenciled quotes from cultural and historical leaders such as Dr. Martin Luther King, M. Gandhi, Cesar Chavez and JFK, painted on the serpentine overhangs throughout the great room.

Creating a restful and peaceful environment for the community is achieved through a strong integration between the exterior and interior architectural elements with views of nature and an abundance of natural light. The space plan enables patrons to navigate easily reducing the need for directional signage.

"Real education should consist of drawing the goodness and the best out of our own students. What better books can there be than the book of humanity?" – Cesar Chavez

The essence of our design concept for Skyline Hills Branch Library is that in celebration of community, education, diversity and inspiration DREAM. HOPE. INSPIRE. The new facility will provide a welcoming gateway to the Skyline-Paradise Hills community for both young and old to enjoy for generations to come.

# MISSION:





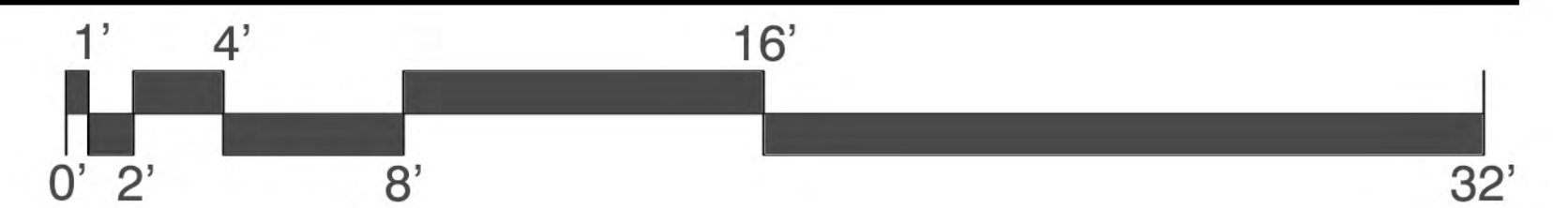
Cross Section - 1/8" = 1'-0"



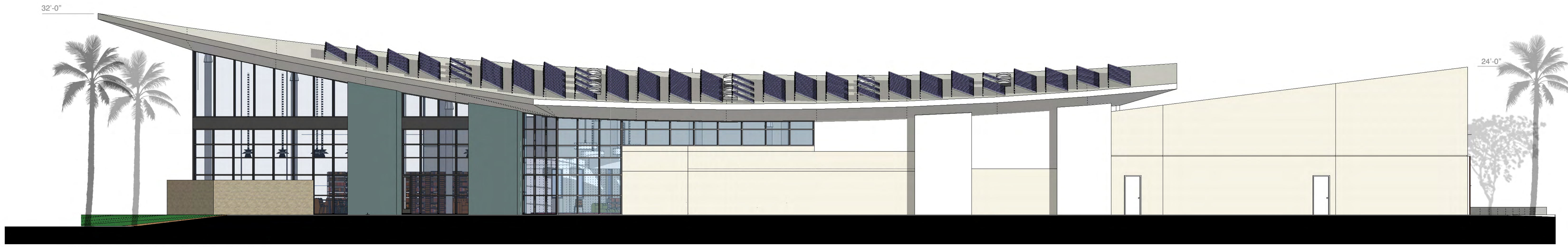
North Elevation - 1/8" = 1'-0"



South Elevation - 1/8" = 1'-0"



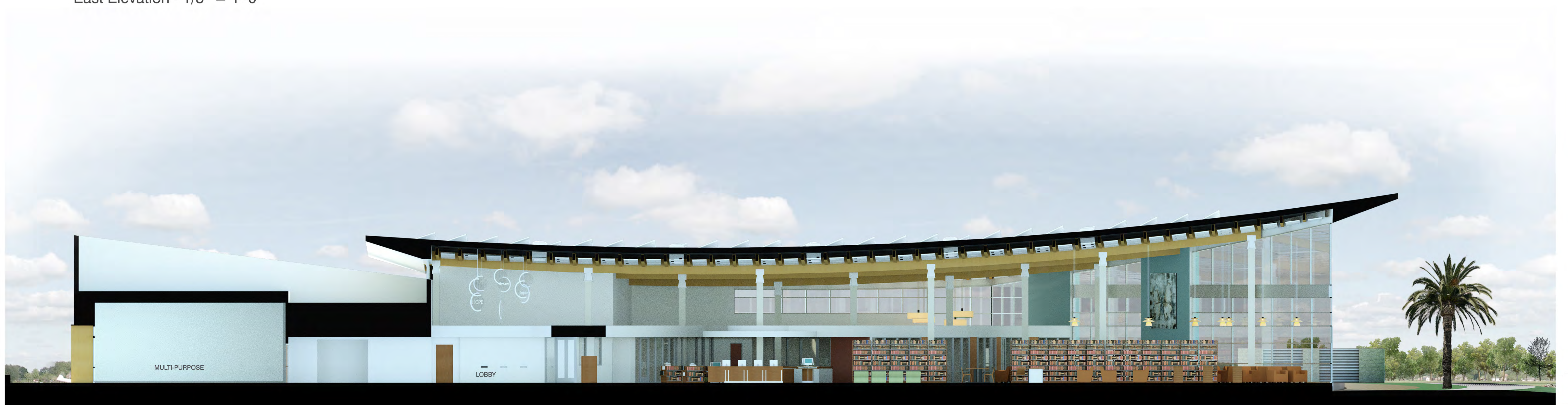




West Elevation - 1/8" = 1'-0"



East Elevation - 1/8" = 1'-0"



Longitudinal Section - 1/8" = 1'-0"

**TO INSPIRE LIFE-LONG LEARNING THROUGH**





50'-0"

EASEMENT



**Sustainability** | The Library is designed to meet the LEED silver requirements of the USGBC.

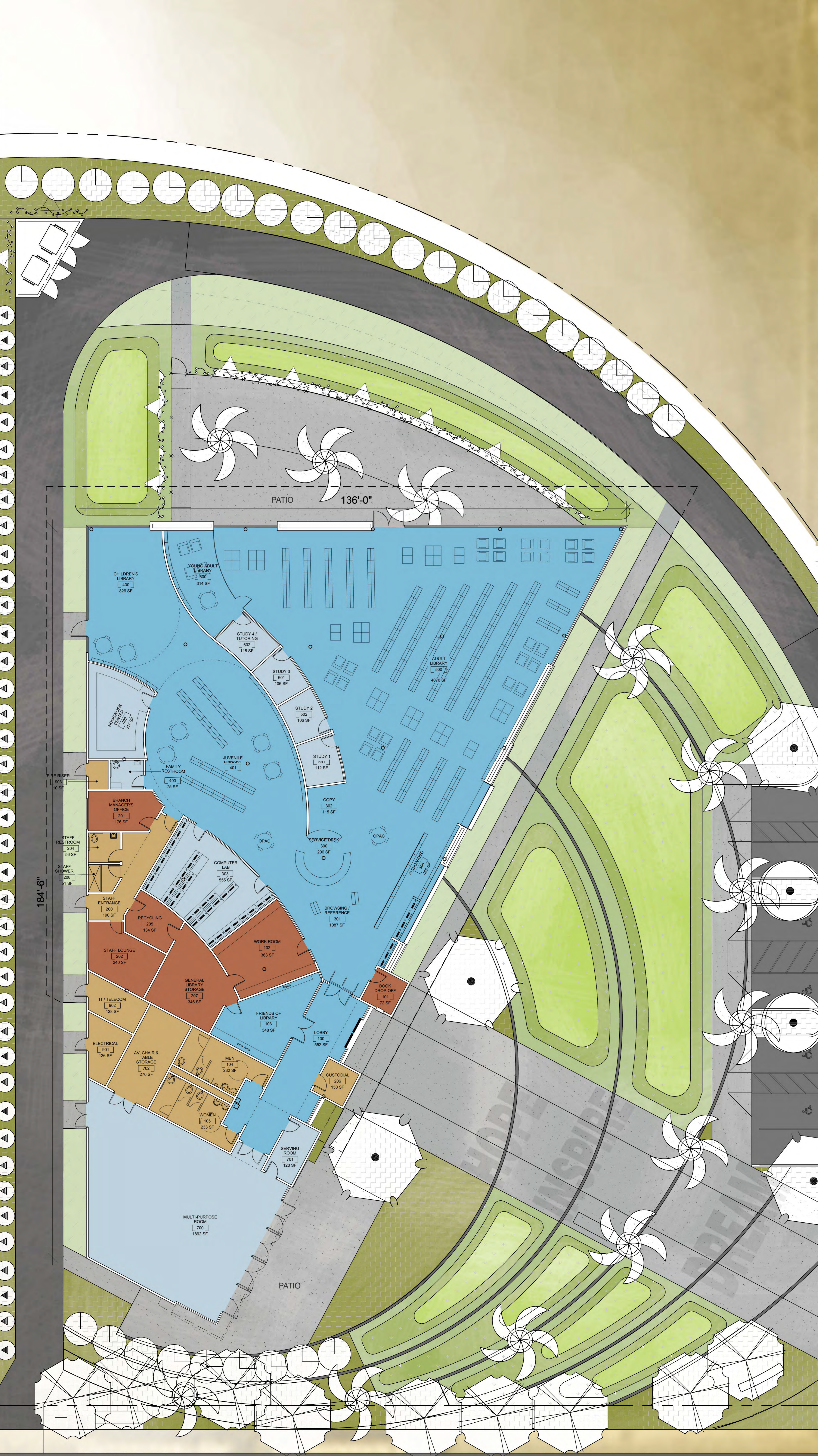
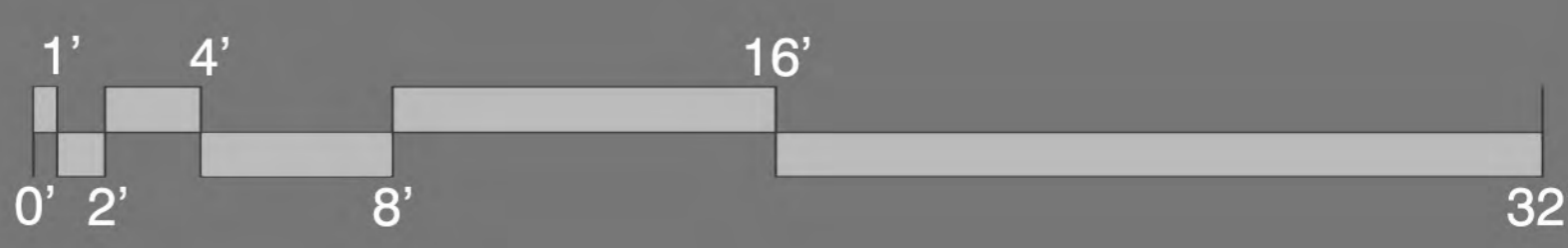
**Library Experience** | Patrons are greeted in the main library by a pivotal and circular service desk which serves as a focal point of control and service. Self-check, borrowing and retail opportunities are initially engaged upon entry. The Services Desk provides both directional control and separation for patrons desiring to go to the children's youth area and patrons desiring to go to the adult and teen areas. Tutoring and study rooms are organized as a serpentine spine with low walls and ceilings below the main floating roof creating separation between the children's youth area and adult and teen spaces. These rooms are glazed on both sides allowing visual transparency yet creating physical separation and control between the two areas. Reading stacks in both areas are organized to direct the line of site and pathways forward towards the northern glass wall promoting visual control and visual stimulation to the daylight wall. Culminating at the end of the stacks are reading lounge opportunities for patrons to enjoy and relax in the daylight and enjoy the views of the outdoor reading patio.

The multipurpose/community room is organized to provide separate access from the library thereby affording activities to occur without disruption to the main library functions. An outdoor patio promotes indoor/outdoor activities extending opportunities for community gathering and functions. Technology and AV will encourage contemporary presentation and educational support. Food serving opportunities with indoor kitchen and outdoor coffee kiosk will enrich the experience and opportunities.

To reduce operational expense, provide security and work efficiency, back of house service areas are organized per program goals and adjacencies with the workroom receiving book drops and secondary visual monitoring of service desk. Office and staff lounges provide visual monitoring and control of the main public spaces as well. A rear service road provides back door service and security.

**Library Space Legend**

- Public Spaces - Collections
- Public Spaces - Special Functions
- Staff Spaces
- Support Spaces



184'-0"