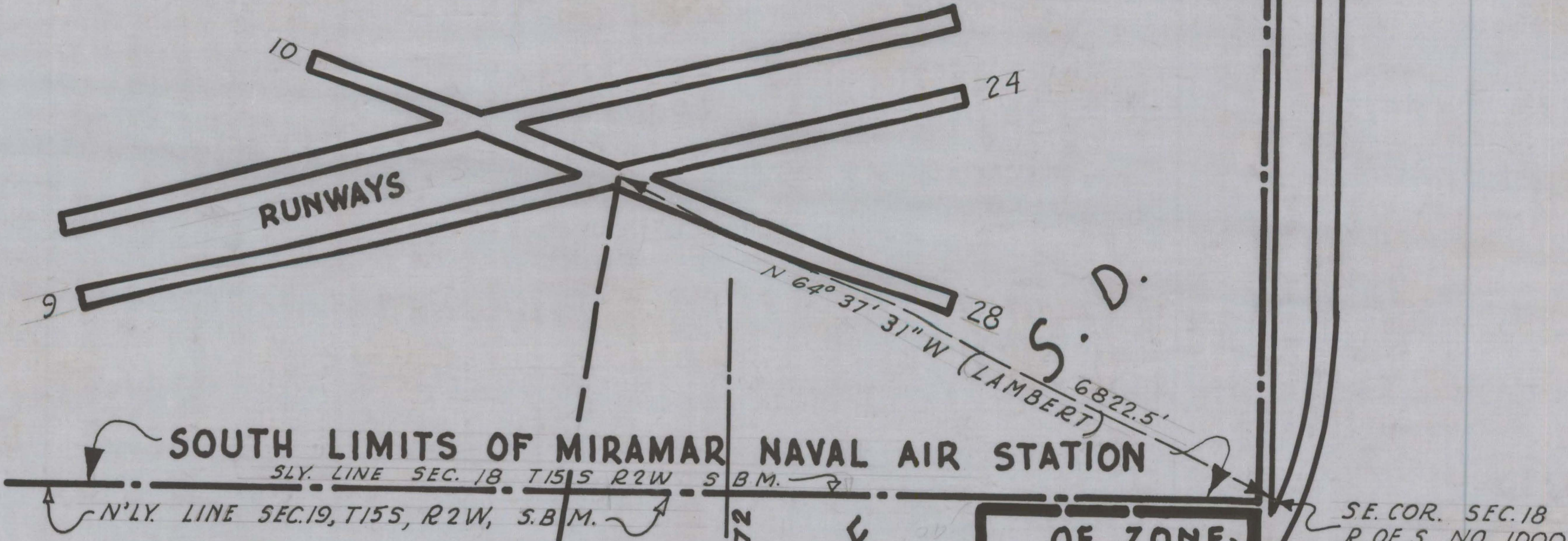
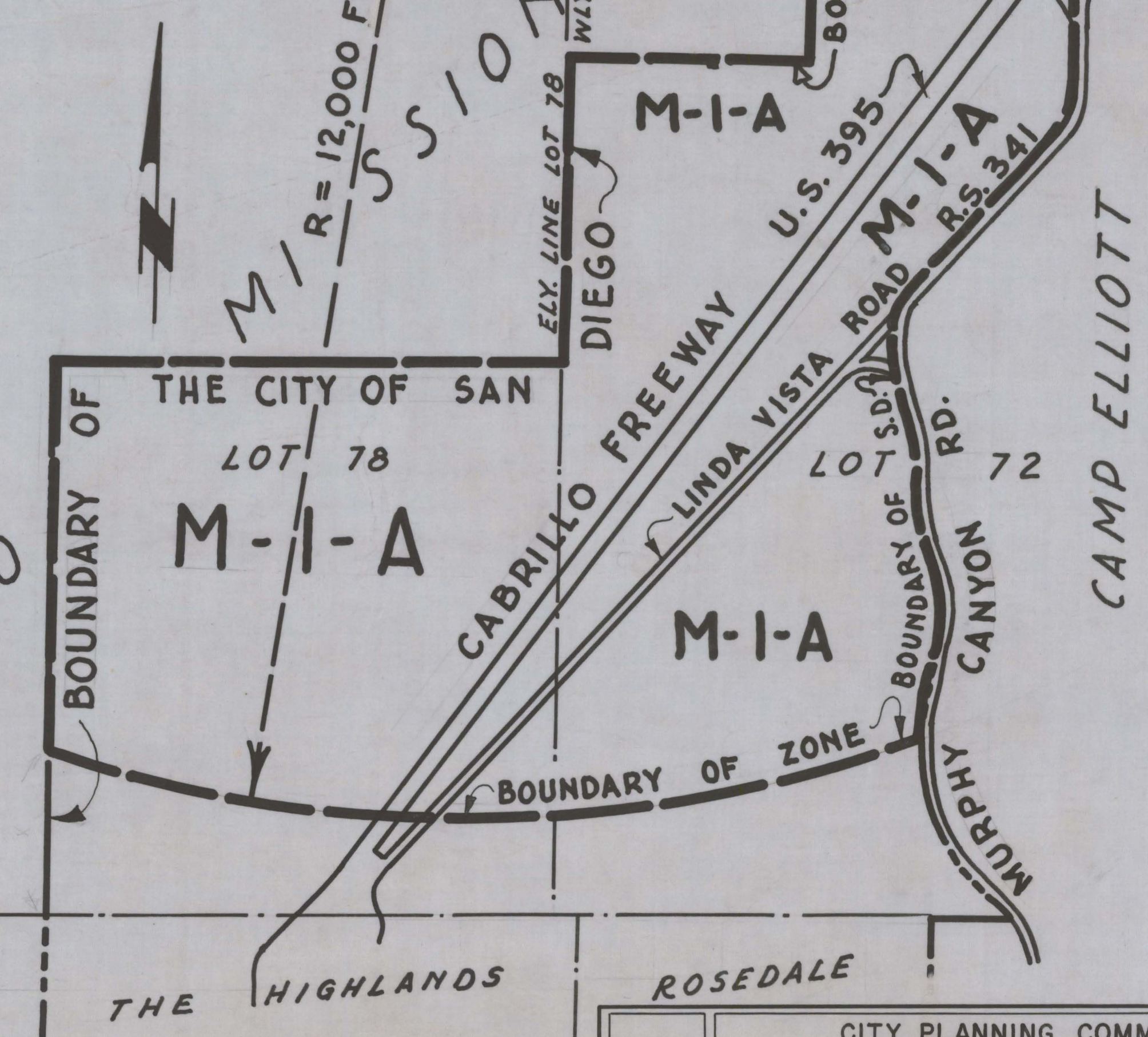


200'

NAVAL AIR STATION MIRAMAR



COUNTY OF
SAN DIEGO



RANCHO

THE CITY OF SAN
LOT 78

M-I-A

CABRILLO FREEWAY

M-I-A

LINDA VISTA ROAD
U.S. 395
M-I-A
R.S. 341

BOUNDARY OF ZONE

LOT 72

MURPHY CANYON RD.

CAMP ELLIOTT

THE HIGHLANDS

ROSEDALE

CITY PLANNING COMMISSION SAN DIEGO, CALIFORNIA		
REZONING PLAN POR. LOT 72-78, RHO. MISSION		
SCALE 1" = 1000' DATE 2-9-54 DRAWN L.R.M. CHECKED	APPROVED <i>Henry A. Rick</i> CITY PLANNING DIRECTOR <i>Mona N. Anderson</i> SECRETARY OF COMMISSION	DRAWING NO. C 101