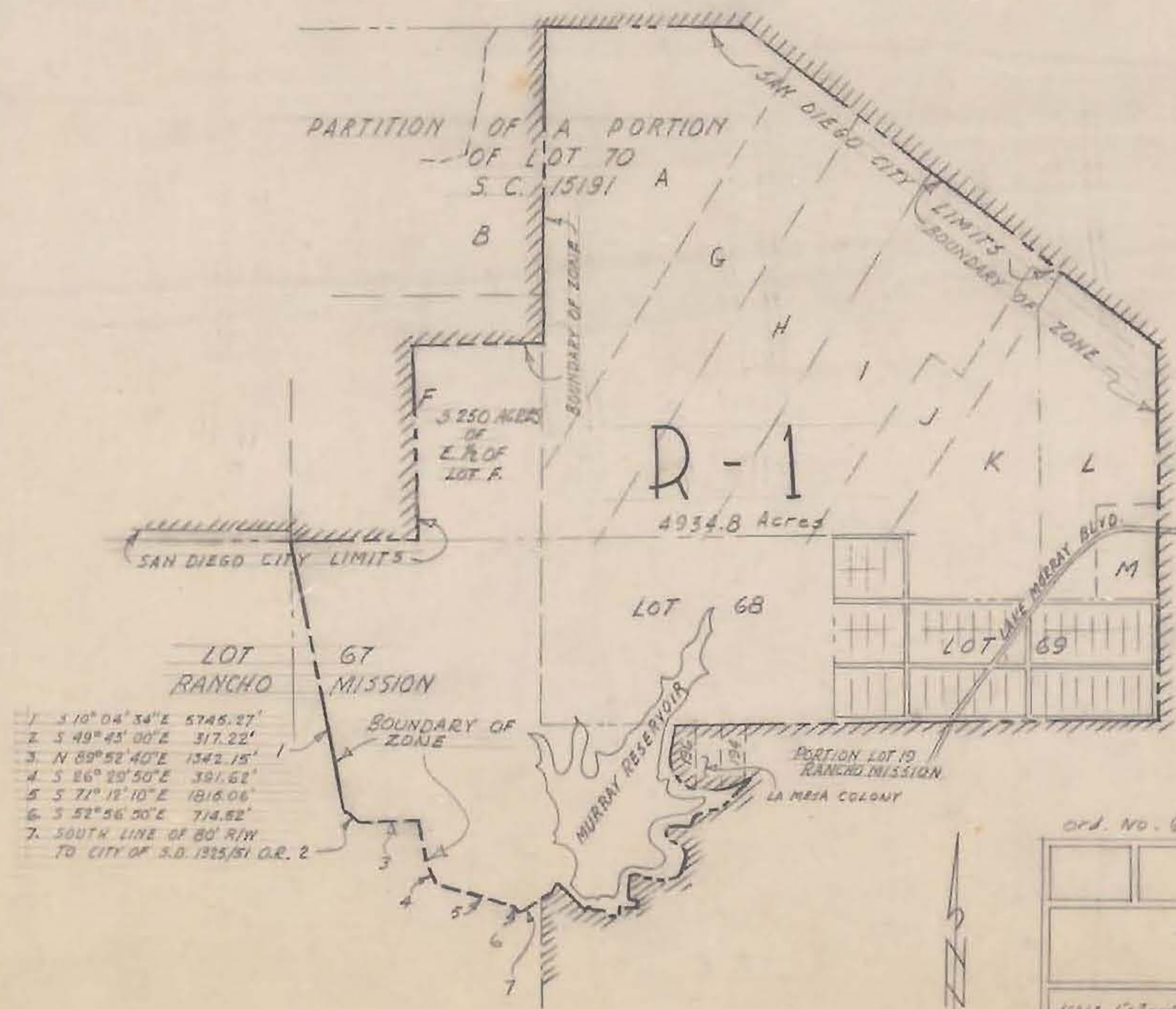


LOT 73



- 1. S 10° 04' 34" E 5745.27'
- 2. S 49° 45' 00" E 317.22'
- 3. N 89° 52' 40" E 1342.15'
- 4. S 86° 29' 50" E 391.62'
- 5. S 71° 18' 10" E 1816.06'
- 6. S 52° 56' 50" E 714.82'
- 7. SOUTH LINE OF 80' R/W TO CITY OF S.D. 1325/51 O.R. 2

Ord. No. 6077

CITY PLANNING COMMISSION SAN DIEGO, CALIFORNIA	
INTERIM ZONING PLAN WARING TRACT NO. 2	
SCALE 1"=1000' DATE 4-8-54 DRAWN L. MEHE CHECKED	DEPARTMENT OF COMMISSION SECRETARY OF COMMISSION
James C. Pich CITY PLANNING DIRECTOR	DRAWING NO. C-106