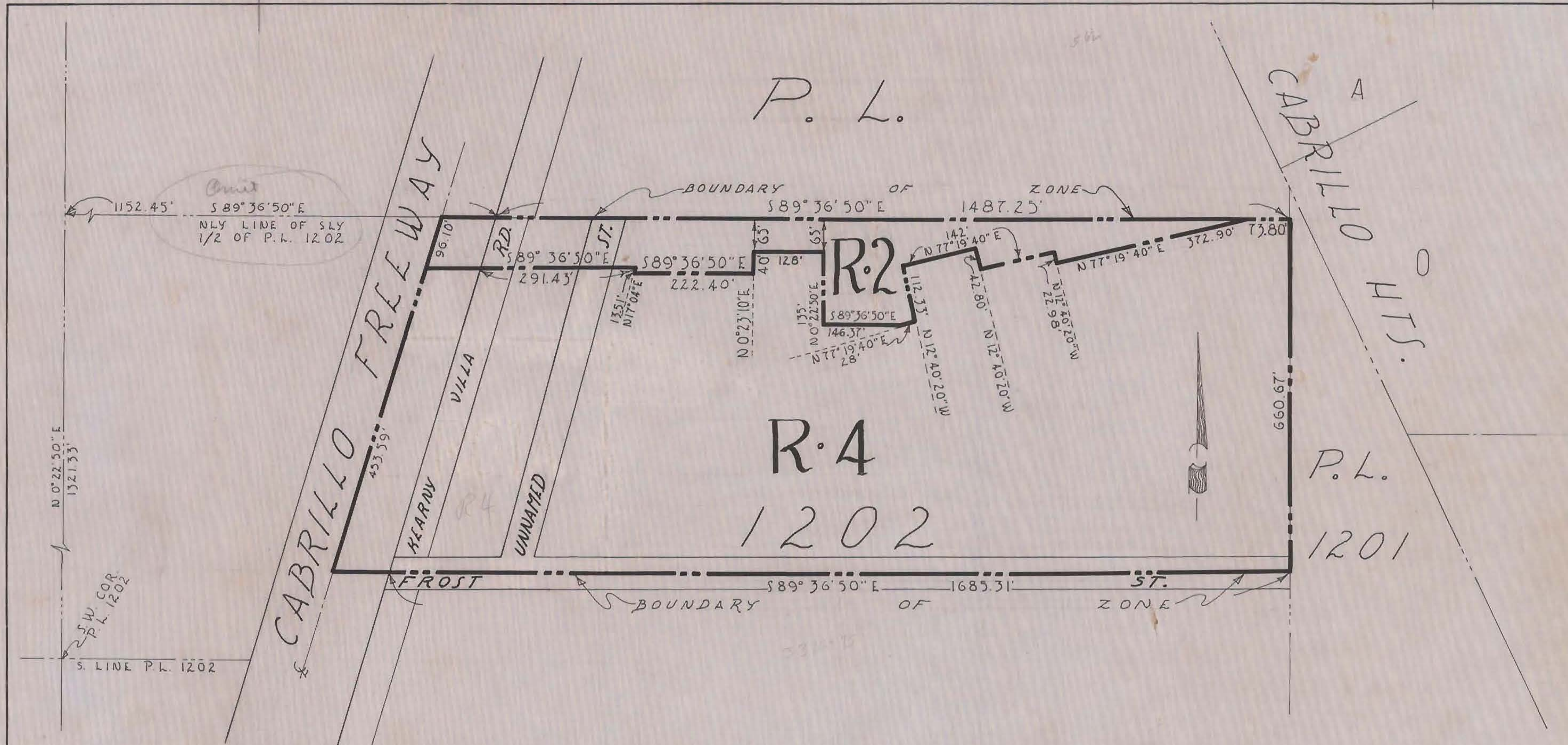


CP17

I CR

P.L.

CABRILLO HTS.



Point  
 1152.45' S89°36'50"E  
 NLY LINE OF SLY  
 1/2 OF P.L. 1202

N0°22'50"E  
 1321.33'

2.5 W COR  
 P.L. 1202

S. LINE P.L. 1202

R-2 = 3.24 Ac  
 R-4 = 22.36 "  
 TOTAL 25.60 Ac

CITY PLANNING COMMISSION SAN DIEGO, CALIFORNIA		
ZONING PLAN POR. P.L. 1202		
SCALE: 1"=100' DATE: 10-10-56 DRAWN: L.S.C. CHECKED:	APPROVED <i>Harry G. Harber</i> CITY PLANNING DIRECTOR <i>Mario R. Anderson</i> SECRETARY OF COMMISSION	DRAWING NO. C-130.1

CP17