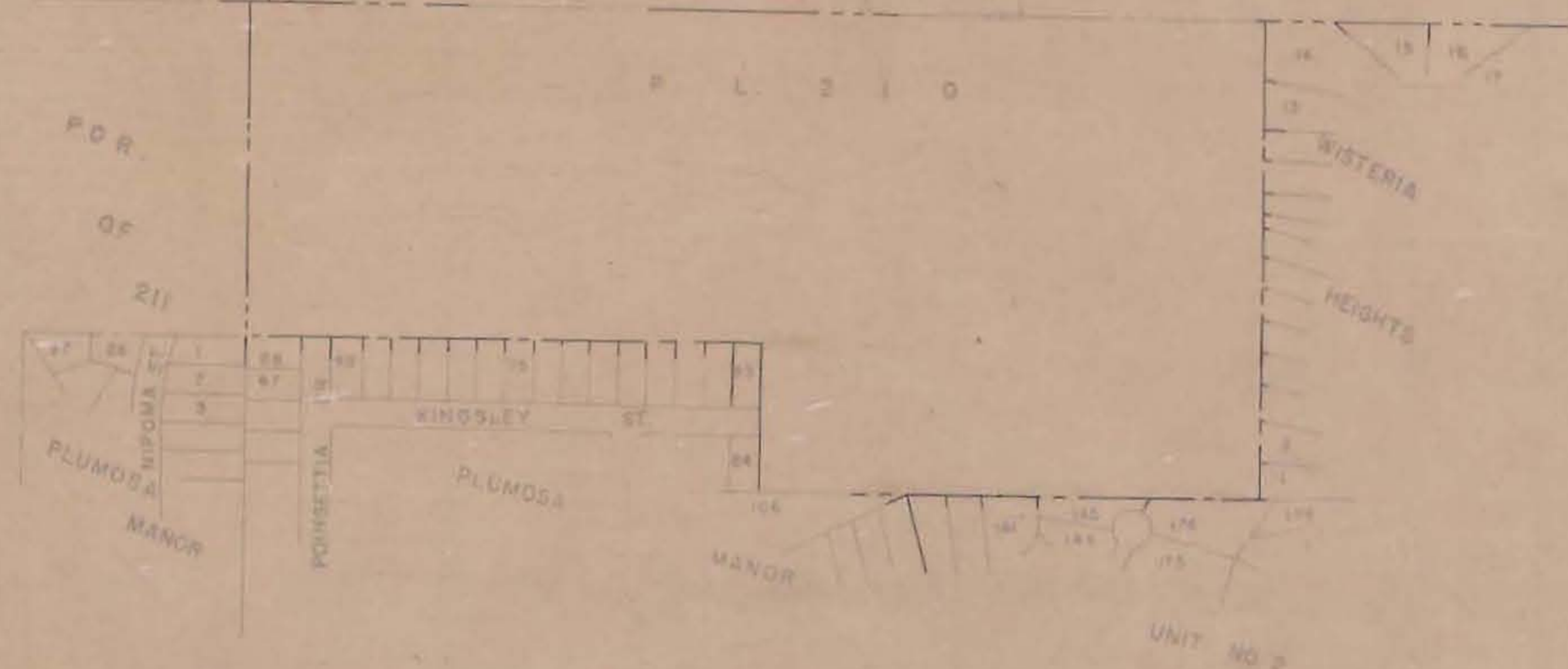


PL 243 FRONTIER ST PL 242 PL 241 PL 240



ACRES ZONED = 24.47[±]

CITY PLANNING COMMISSION SAN DIEGO, CALIFORNIA		C = 3.75 [±] CP = 3.00 [±] RC-1A = 17.72 [±]
ZONING PLAN PORTION P.L. 220		
SCALE: P-100 DATE 8/28/67 DRAWN J.H. CHECKED	APPROVED: <i>Sandy L. Hartog</i> <i>John N. Anderson</i>	CI42.1

CP-19
C-142.1