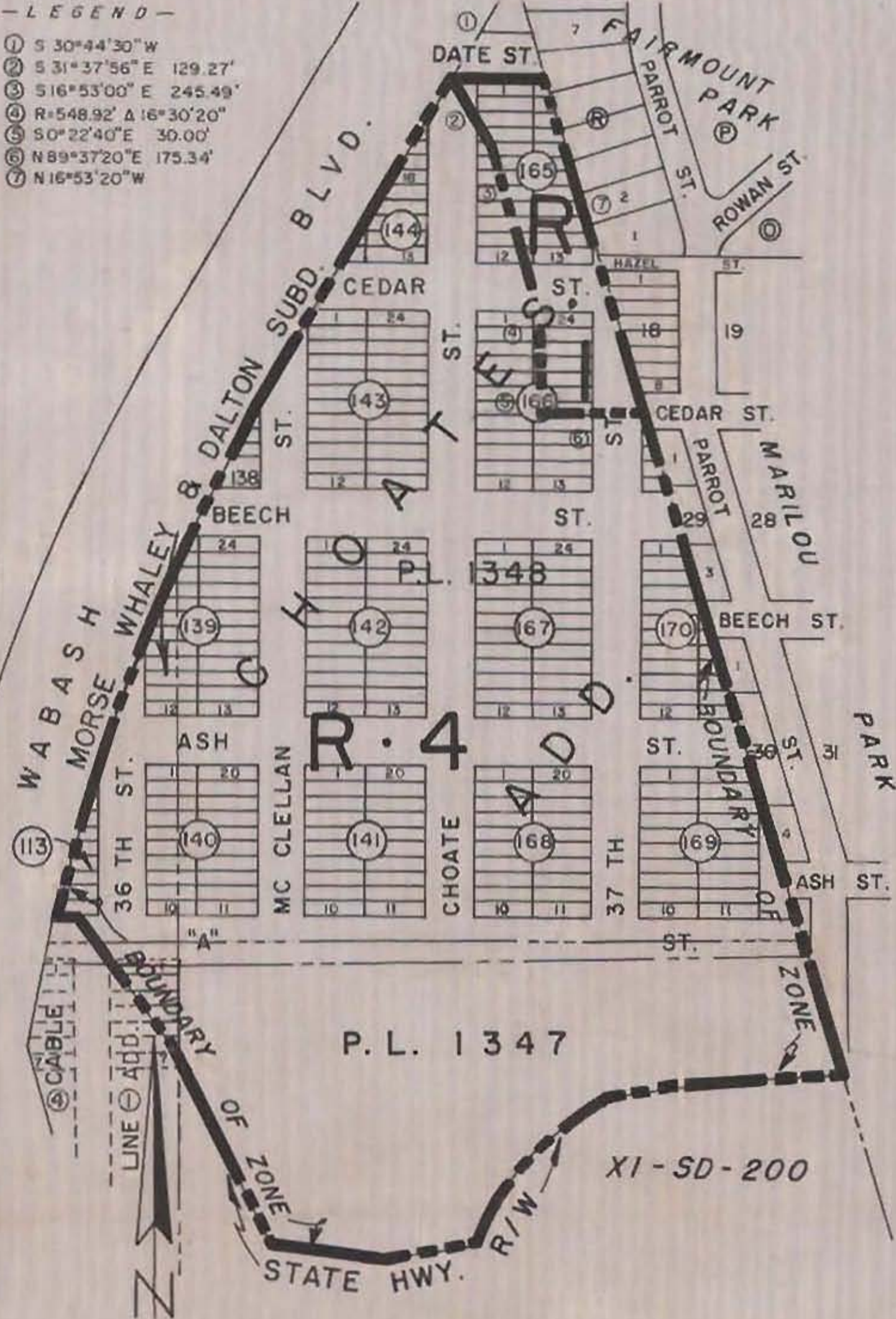


- LEGEND -

- ① S 30°44'30" W
- ② S 31°37'56" E 129.27'
- ③ S 16°53'00" E 245.49'
- ④ R=548.92' Δ 16°30'20"
- ⑤ S 0°22'40" E 30.00'
- ⑥ N 89°37'20" E 175.34'
- ⑦ N 16°53'20" W



	CITY PLANNING COMMISSION SAN DIEGO, CALIFORNIA		
EFF. DATE _____  ORD. _____ NS.	ZONING PLAN CHOATES ADD. & VICINITY		
ACRES ZONED R-1 = 2.20    34.08± R-4 = 31.88	SCALE: 1"=200' DATE: 12-20-57 DRAWN: D.F.B. CHECKED: D/3/E.	APPROVED  CITY PLANNING DIRECTOR  SECRETARY OF COMMISSION	DRAWING NO. <b>C-1461</b>