

26 25  
35 36

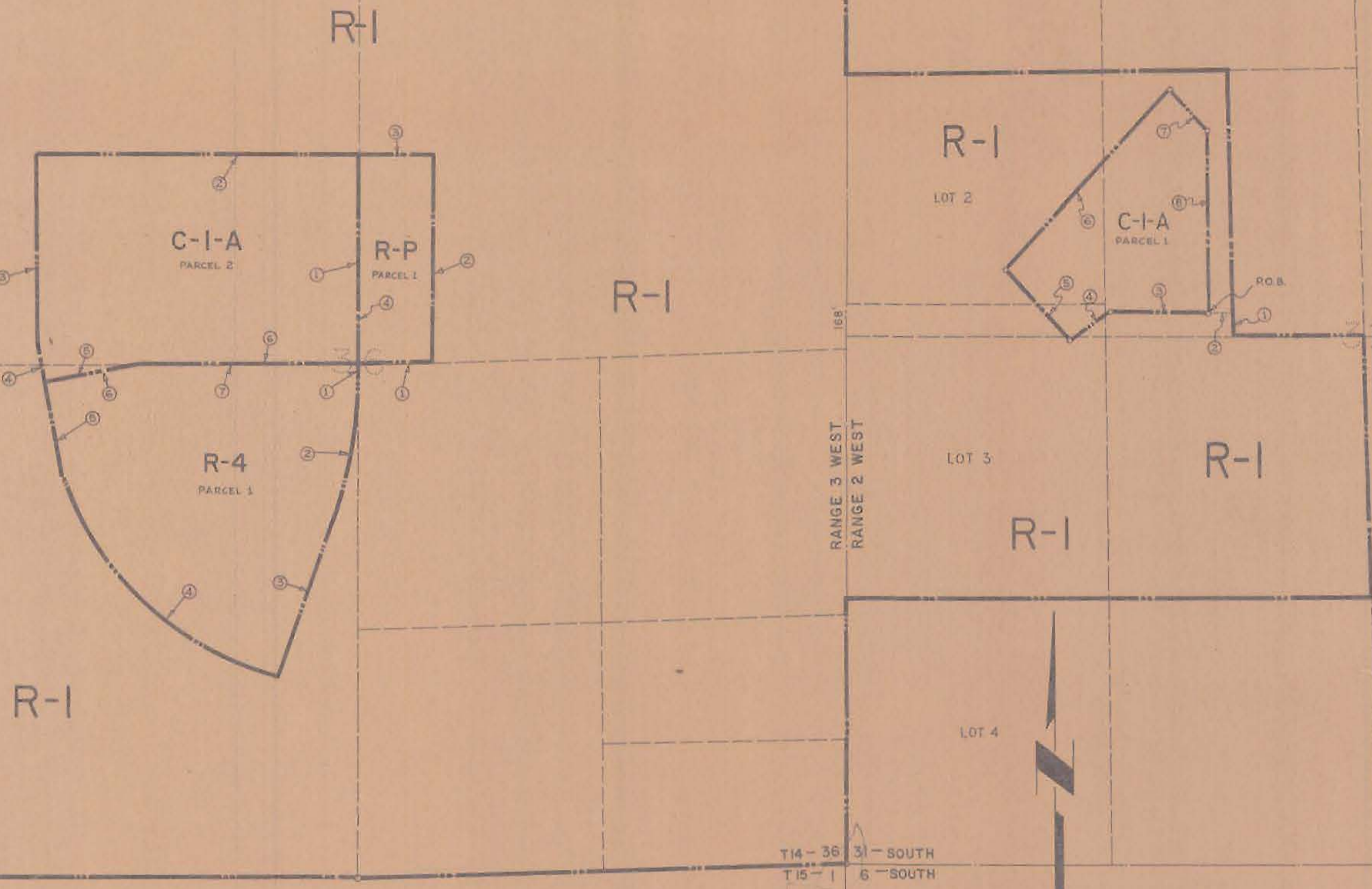
25 30  
36 31

30 29  
31 32

35 36  
2 1

T14 - 36  
T15 - 1

31 32  
6 5



# LEGEND

C-1A = 60.20 ACRES  
 R-P = 9.58  
 R-4 = 41.97  
 R-1 = 674.94  
 786.59 ACRES

### C-1-A ZONE (PARCEL 2)

- ① NORTH - 120'
- ② WEST - 140'
- ③ WEST - 500'
- ④ SOUTH 56°11'25" WEST - 255.53'
- ⑤ NORTH 41°40'00" WEST - 500'
- ⑥ NORTH 42°20'00" EAST - 1260'
- ⑦ SOUTH 47°40'00" EAST - 150'
- ⑧ SOUTH - 940' TO R.O.B.

### C-1-A ZONE (PARCEL 2)

- ① NORTH - 1086'
- ② WEST - 1686'
- ③ SOUTH - 870'
- ④ SOUTH 10° EAST - 210'
- ⑤ NORTH 78° EAST - 510'
- ⑥ EAST - 1150'

### R-P ZONE (PARCEL 1)

- ① EAST - 391'
- ② NORTH - 1086'
- ③ WEST - 391'
- ④ SOUTH - 1086'

### R-4 ZONE (PARCEL 1)

- ① SOUTH - 34.67'
- ② R = 2255' L = 780.16'
- ③ SOUTH 20° WEST - 912.19'
- ④ R = 1625' A = 64°00'00" L = 1815.11'
- ⑤ NORTH 10° WEST - 290'
- ⑥ NORTH 78° EAST - 510'
- ⑦ WEST - 1150'

CITY PLANNING COMMISSION SAN DIEGO, CALIFORNIA	
<b>ZONING PLAN</b>	
PORTIONS SECTION 36 T14S, R3W & SECTION 31 T14S, R2W S.B.B.M.	
SCALE 1" = 400' DATE 12-10-58 DRAWN H.R.K. CHECKED	APPROVED  CITY PLANNING DIRECTOR SECRETARY OF COMMISSION
	<b>C-164</b>

CP21