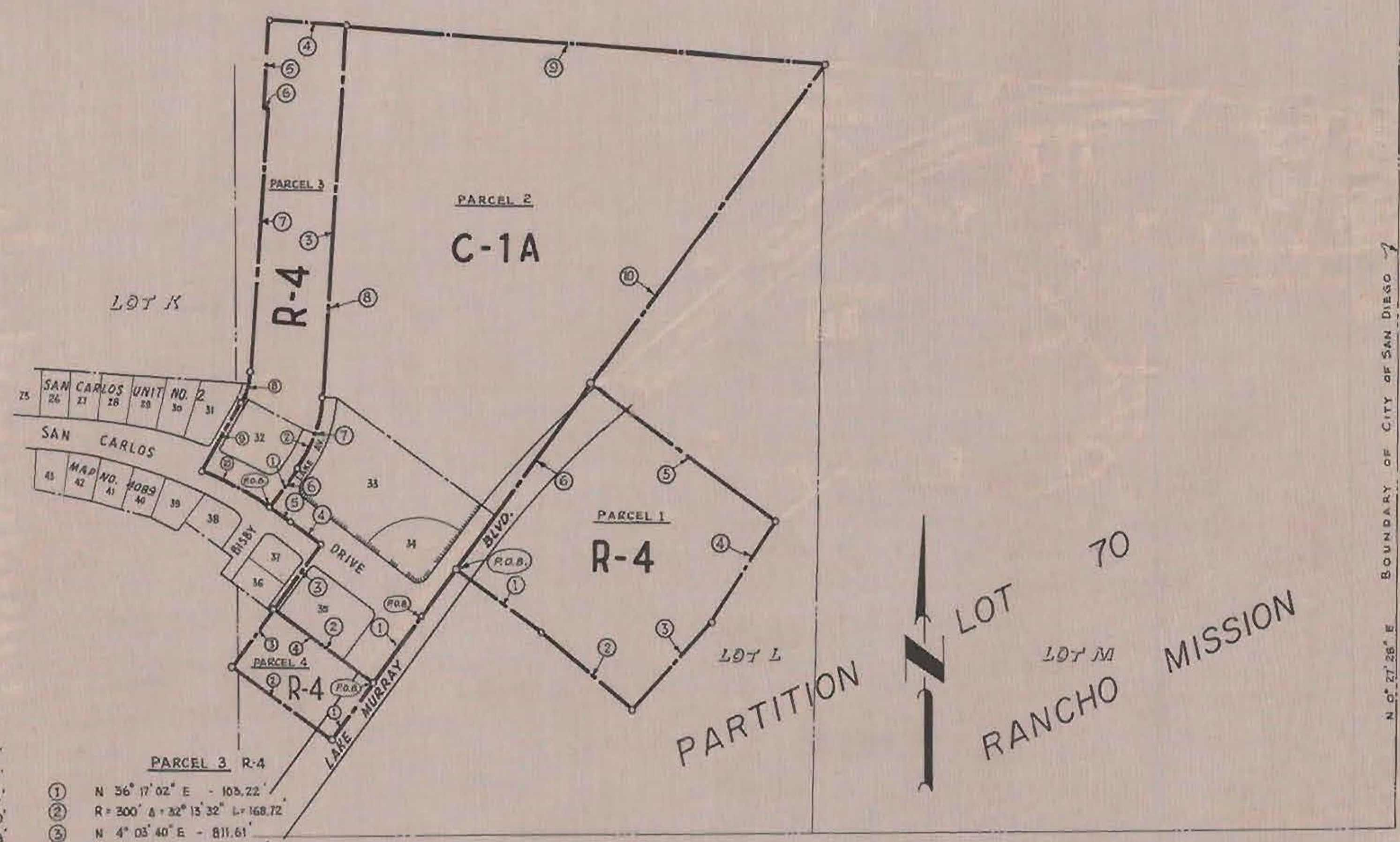


CP21



BOUNDARY OF CITY OF SAN DIEGO

PARCEL 1 R-4	
①	S 53° 42' 58" E - 232.90
②	S 50° 05' 50" E - 264.45
③	N 42° 14' 00" E - 260.33
④	N 32° 59' 10" E - 264.60
⑤	N 53° 42' 58" W - 508.98
⑥	S 36° 17' 02" W - 506.40

PARCEL 2 C-1A	
①	S 36° 17' 02" W - 176.00
②	N 53° 42' 58" W - 282.00
③	N 36° 17' 02" E - 176.00
④	N 53° 42' 58" W - 82.77
⑤	R = 1000' Δ = 3° 16' 52" L = 57.27
⑥	N 36° 17' 02" E - 103.22
⑦	R = 300' Δ = 32° 13' 22" L = 168.72
⑧	N 4° 03' 40" E - 811.61
⑨	S 85° 56' 20" E - 1065.00
⑩	S 36° 17' 02" W - 1516.02

PARCEL 3 R-4	
①	N 36° 17' 02" E - 103.22
②	R = 300' Δ = 32° 13' 22" L = 168.72
③	N 4° 03' 40" E - 811.61
④	N 85° 56' 20" W - 171.23
⑤	S 4° 03' 40" W - 189.00
⑥	S 85° 56' 20" E - 10.45
⑦	S 4° 03' 40" W - 579.97
⑧	R = 150' Δ = 26° 07' 10" L = 72.94
⑨	S 30° 10' 50" W - 173.67
⑩	R = 1000' Δ = 9° 30' 53" L = 166.06

PARCEL 4 R-4	
①	S 36° 17' 02" W - 157.50
②	N 53° 42' 58" W - 282.00
③	N 36° 17' 02" E - 157.50
④	S 53° 42' 58" E - 282.00

R-4 = 11.04 ACRES  
C-1A = 18.96 ACRES

CITY PLANNING COMMISSION SAN DIEGO, CALIFORNIA	
<b>ZONING PLAN</b>	
PORTIONS LOTS K & L, PARTITION LOT 70 RCHO-MISSION & LOTS 32 TO 35 INC. SAN CARLOS UNIT NO 2	
SCALE: 1" = 200' DATE: 3-23-59 DRAWN: H.R.K. CHECKED:	APPROVED: <i>Henry C. Harding</i> CITY PLANNING DIRECTOR <i>Donna A. Peters</i> SECRETARY OF COMMISSION
	DRAWING NO: <b>C-169.1</b>

CP21