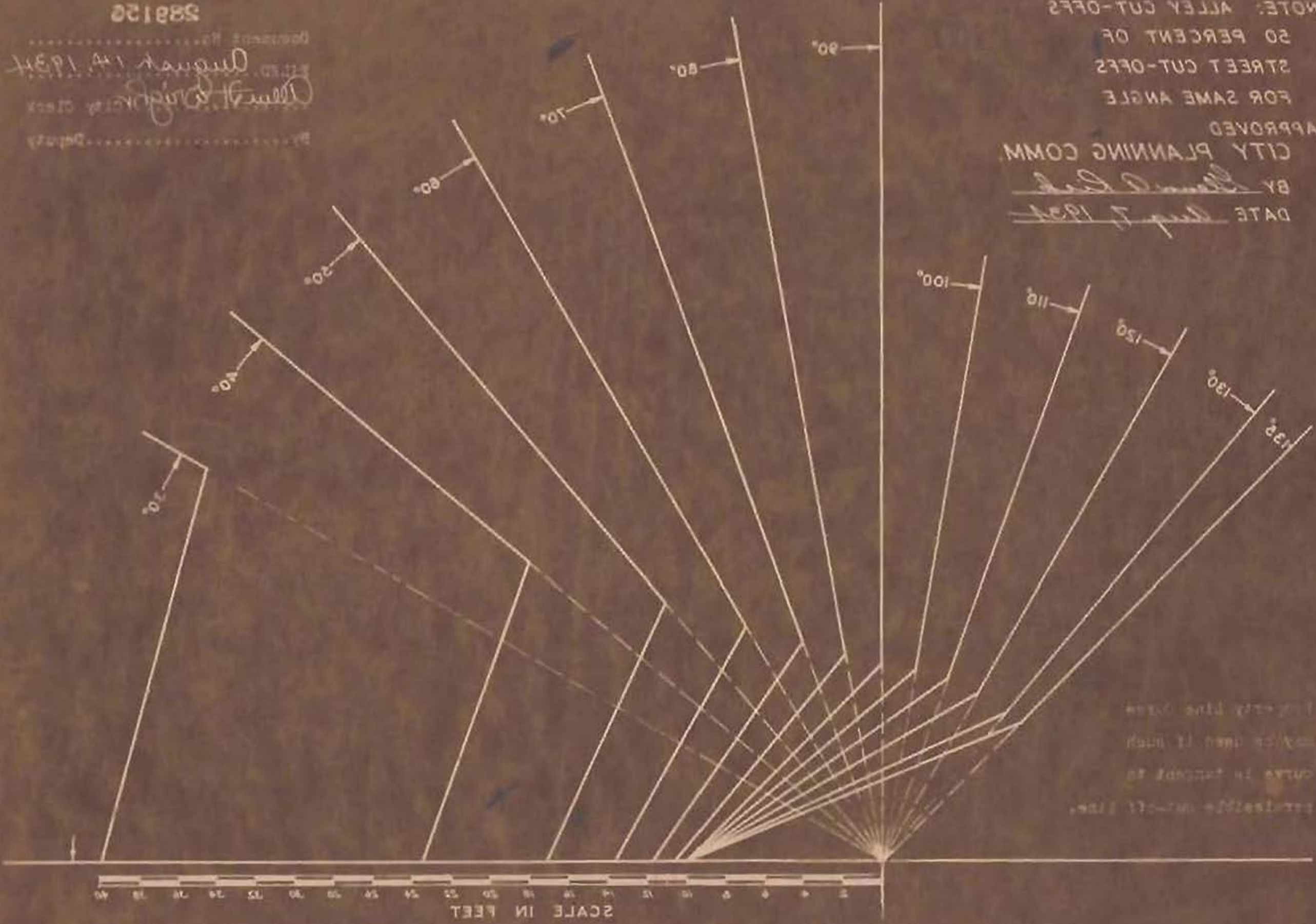


588150

APPROVED  
CITY PLANNING COMMISSION  
BY *[Signature]*  
DATE *Aug 7 1934*

NOTE: ALLEY CUT-OFFS  
50 PERCENT OF  
STREET CUT-OFFS  
FOR SAME ANGLE  
APPROVED  
CITY PLANNING COMM.  
BY *[Signature]*  
DATE *Aug 7 1934*



Property line shown  
may be used if such  
curve is tangent to  
property line.

STANDARDS OF THE CITY PLANNING COMMISSION  
ADJACENT TO STREETS INTERSECTING AT ANGLES OF 30 TO 135 DEGREES  
CUT-OFF DISTANCES FOR BLOCK CORNERS  
CHART SHOWING EXAMPLES OF

CALIFORNIA

RECO