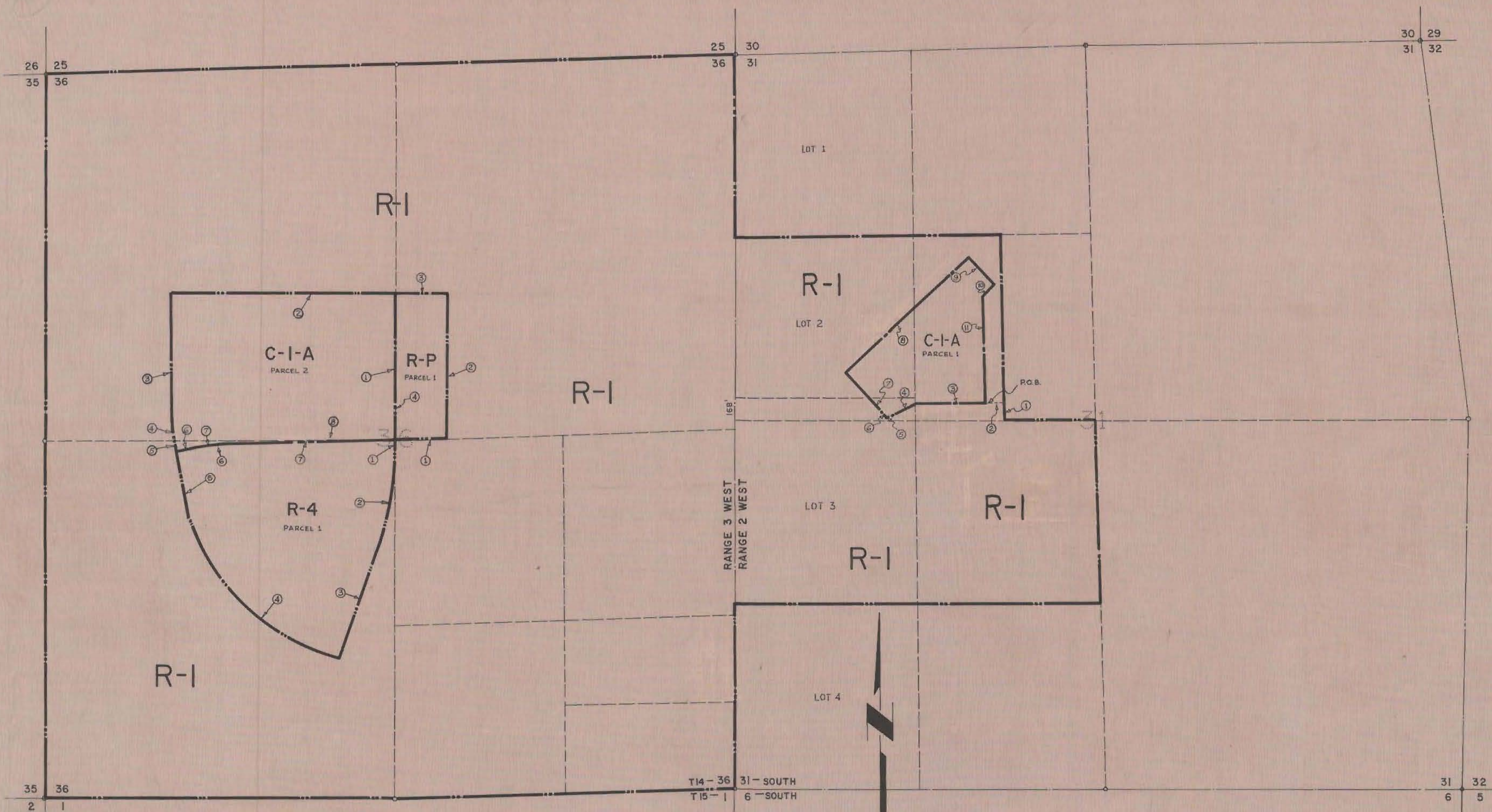


CP23

make 3 Cal.



LEGEND

C-1-A = 57.30 ACRES
 R-P = 9.58
 R-4 = 41.87
 R-1 = 674.94
 783.69 ACRES

- C-1-A ZONE (PARCEL 1)**
- ① N 1°19'38" W, 130.02'
 - ② N 89°42'15" E, 1400.2'
 - ③ N 89°42'15" E, 513.94'
 - ④ N 63°38'18" E, 231.22'
 - ⑤ N 52°29'14" E, 30.0'
 - ⑥ Δ = 5°2'31", R = 850.0'
 - ⑦ N 42°43'17" W, 375.0'
 - ⑧ N 47°16'43" E, 1260.0'
 - ⑨ N 47°43'17" W, 278.0'
 - ⑩ N 47°16'43" E, 113.35'
 - ⑪ N 1°19'38" W, 784.99'

- C-1-A ZONE (PARCEL 2)**
- ① N 1°42'40" W, 1086.0'
 - ② N 88°17'20" E, 1686.0'
 - ③ N 1°42'40" W, 876.97'
 - ④ Δ = 10°00', R = 1063.28'
 - ⑤ N 8°42'40" W, 62.81'
 - ⑥ N 78°17'20" E, 123.60'
 - ⑦ R = 1600.0', L = 279.25'
 - ⑧ N 88°17'20" E, 1235.30'

- R-P ZONE (PARCEL 1)**
- ① EAST - 361'
 - ② NORTH - 1086'
 - ③ WEST - 361'
 - ④ SOUTH - 1086'

- R-4 ZONE (PARCEL 1)**
- ① N 88°17'20" E, 1235.3'
 - ② R = 1600.0', L = 279.25'
 - ③ N 78°17'20" E, 123.60'
 - ④ S 11°42'40" E, 344.18'
 - ⑤ R = 1685.0', L = 1769.24'
 - ⑥ N 19°41'20" E, 904.87'
 - ⑦ R = 2000.0', L = 747.0'
 - ⑧ N 1°42'40" W, 71.0'

4 hrs.

CITY PLANNING COMMISSION
 SAN DIEGO, CALIFORNIA

ZONING PLAN
 PORTIONS SECTION 36 T14S, R3W & SECTION 31 T14S, R2W S.B.B.M.

SCALE 1" = 400'
 DATE 5-2-60
 DRAWN H.K. + J.H.
 CHECKED

APPROVED

Richard B. Mies
 CITY PLANNING DIRECTOR
Robert Berger
 SECRETARY OF COMMISSION

C-182

CP23