

C.P. 3

ORD. No. 8359 NS
 EFF. DATE ORD. 10/30/60
 EFF. DATE ZONING 9/29/61
 MAP REQ. _____ BEFORE _____
 MAP OR MAPS REQ. _____ BEFORE _____
 MAP NOT REQ. _____
 MAP RECORDED _____
 MAP NOT RECORDED _____
 ZONING ACTION VOICES _____

10-30-61

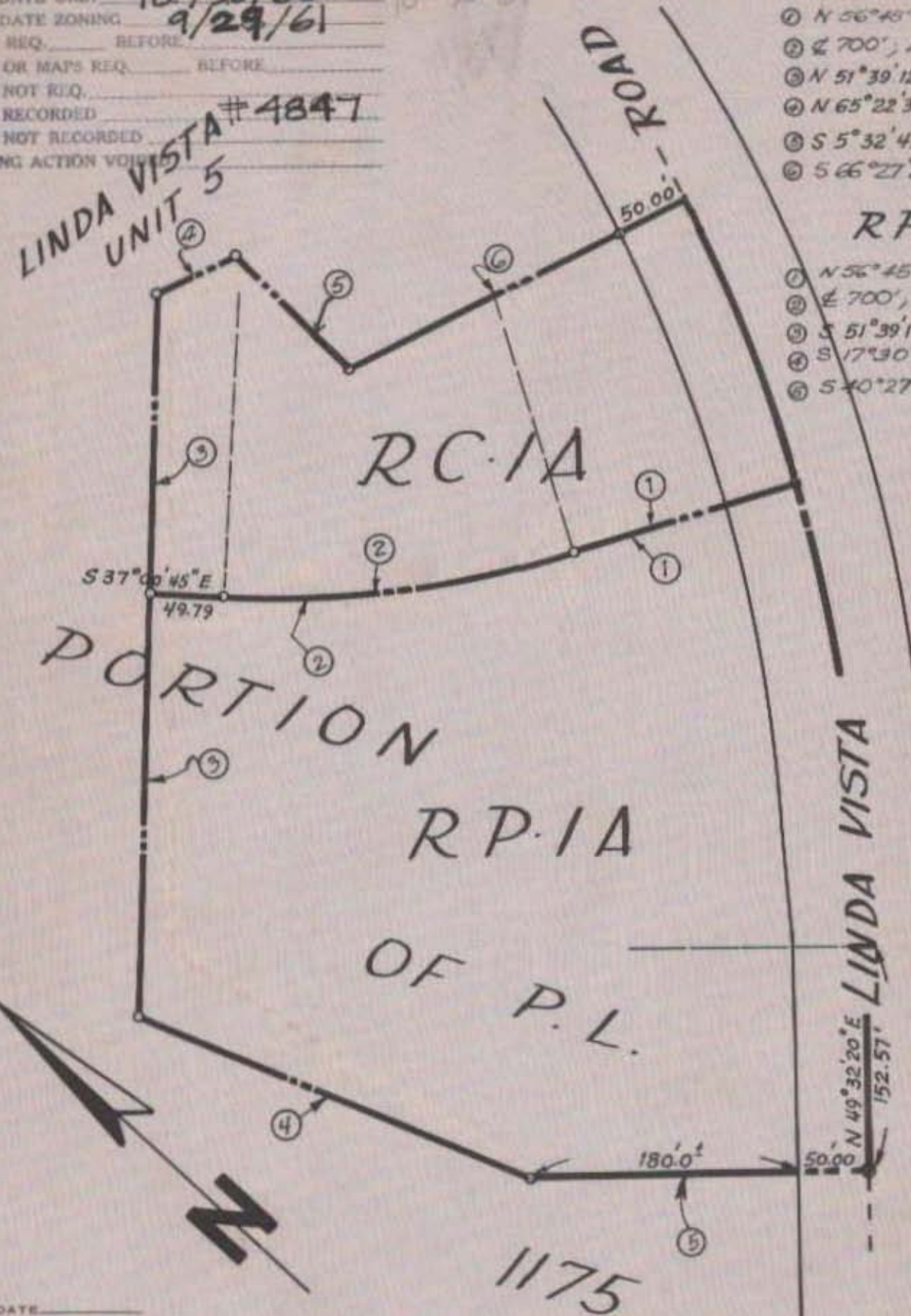
RC-1A =

- ① N 56°43'01"W, 163.24'
- ② E 700', Δ = 19°44'16"
- ③ N 51°39'12"E 204.70'
- ④ N 65°22'35"W 60.00'
- ⑤ S 5°32'45"W 109.74'
- ⑥ S 66°27'25"W 206.32'

RP-1A =

- ① N 56°45'01"W, 163.24'
- ② E 700', Δ = 19°44'16"
- ③ S 51°39'12"W 289.76'
- ④ S 17°30'E, 295.0'
- ⑤ S 40°27'40"E, 180.0'

LINDA VISTA UNIT #4847
 UNIT 5



S 37°00'45"E
 49.79

50.00'

N 49°32'20"E
 152.57'

180.0'

1175

EFF. DATE _____
 ORD. _____ NS
 ACRES ZONED RP-1A = 3.88 ±, RC-1A = 1.64 ± AC.

4/2 HRS

CITY PLANNING COMMISSION
 SAN DIEGO, CALIFORNIA

ZONING PLAN
 PORTION OF P.L. 1175

SCALE: 100'
 DATE 9-11-60
 DRAWN - HEM
 CHECKED: P.K.

APPROVED _____
 CITY PLANNING DIRECTOR

 SECRETARY OF COMMISSION

DRAWING NO.
 C-185.2