

PARCEL 1 R-5

- ① S 87° 57' 30" W 144.90
- ② R=100 A=118° 40' L=16.19
- ③ N 8° 07' 10" E 254.97
- ④ R=20 A=70° L=31.42
- ⑤ N 8° 07' 30" E 40.00
- ⑥ S 81° 52' 50" E 254.67
- ⑦ S 0° 27' 28" W 272.67

PARCEL 2 R-5

- ① N 34° 17' 02" E 131.41
- ② S 85° 42' 50" E 328.54
- ③ C=4000 A=4° 05' 30" L=283.15
- ④ S 81° 52' 50" E 124.05
- ⑤ S 8° 07' 10" W 40.00
- ⑥ R=20 A=90° L=31.42
- ⑦ S 8° 07' 10" W 254.57
- ⑧ R=350 A=2° 55' 00" L=16.98
- ⑨ S 87° 57' 30" W 156.24
- ⑩ N 87° 09' 10" W 187.41
- ⑪ N 30° 05' 40" W 117.17
- ⑫ S 55° 42' 58" W 205.20
- ⑬ N 55° 42' 58" W 128.60

PARCEL 3 R-P

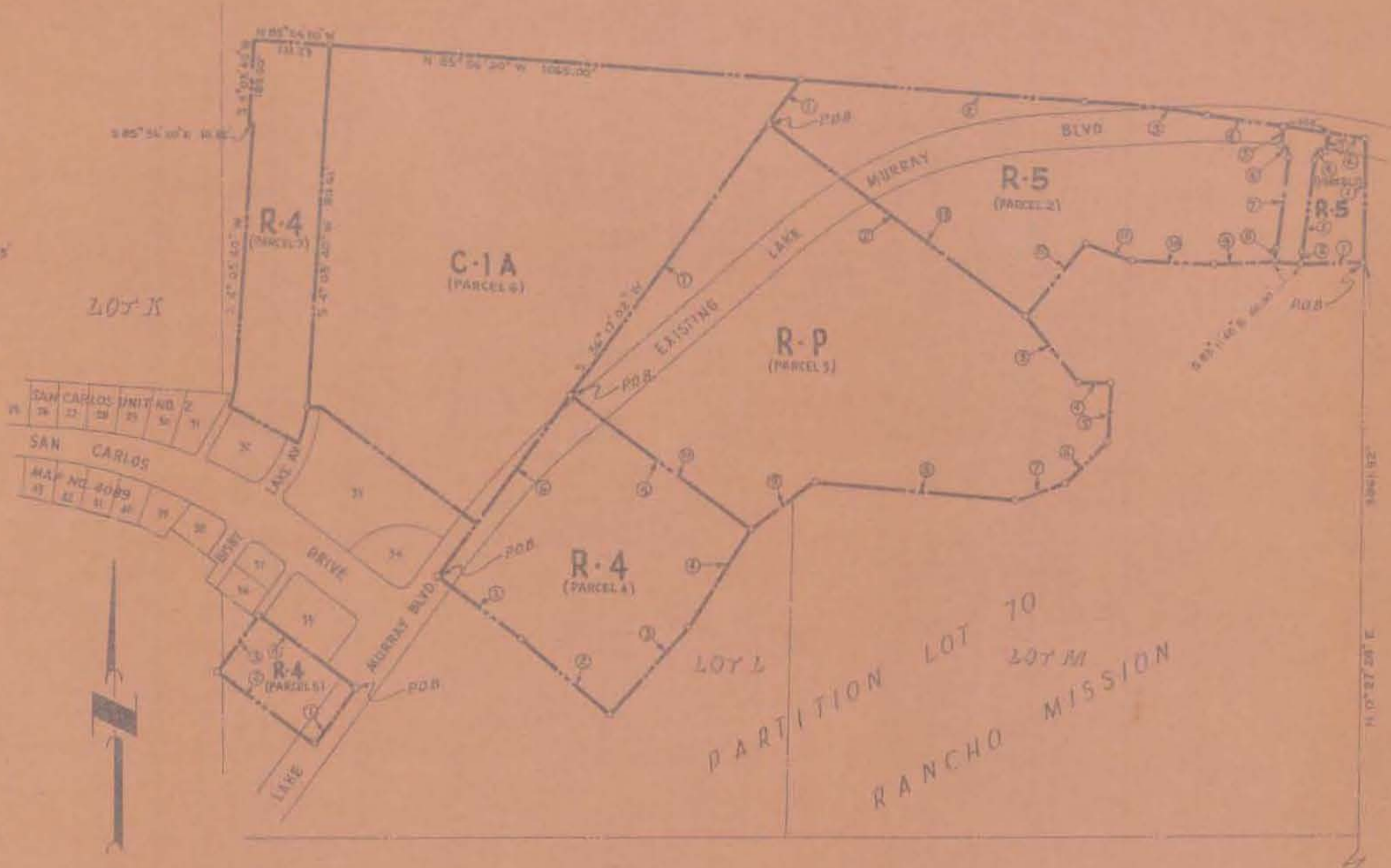
- ① N 34° 17' 02" E 131.41
- ② S 85° 42' 50" E 328.54
- ③ S 40° 05' 30" E 184.75
- ④ S 85° 45' 10" E 72.96
- ⑤ S 4° 07' 30" W 195.38
- ⑥ S 45° 57' 30" W 154.48
- ⑦ S 71° 51' 20" W 119.72
- ⑧ N 85° 07' 30" W 152.41
- ⑨ S 55° 34' 20" W 180.50
- ⑩ N 55° 42' 58" W 508.58

PARCEL 4 R-4

- ① S 55° 42' 58" E 242.90
- ② W 50° 05' 50" E 254.45
- ③ N 49° 14' 00" E 250.91
- ④ N 32° 49' 10" E 244.00
- ⑤ N 55° 42' 58" W 508.58
- ⑥ S 34° 17' 02" W 504.40

PARCEL 5 R-4

- ① S 34° 17' 02" W 151.60
- ② N 55° 42' 58" W 282.00
- ③ N 34° 17' 02" E 151.60
- ④ S 55° 42' 58" E 282.00



C-1A = 16.61 AC
 R-5 = 9.92 AC
 R-P = 14.14 AC
 R-4 = 10.34 AC
TOTAL ACRES = 51.01

LOT 59

SOUTHWESTERLY CORNER OF LOT 59 RANCHO MISSION

CITY PLANNING COMMISSION
 SAN DIEGO, CALIFORNIA

ZONING PLAN
PORTIONS LOTS K-L-M PARTITION LOT TO RANCHO MISSION

SCALE: 1"=200'
 DATE: 6-10-59
 DRAWN: H.R.K.
 CHECKED:

APPROVED: _____
 CITY PLANNING DIRECTOR
 SECRETARY OF COMMISSION

C-188

CP23