

PARCEL 1 R-5

- ① S 87° 57' 30" W 144.90'
- ② R=270° Δ=1° 18' 50" L=16.19'
- ③ N 8° 07' 10" E 234.57'
- ④ R=20° Δ=90° L=31.42'
- ⑤ N 8° 07' 10" E 40.00'
- ⑥ S 81° 52' 50" E 85.67'
- ⑦ S 0° 27' 28" W 277.67'

PARCEL 2 R-5

- ① N 36° 17' 02" E 121.49'
- ② S 85° 56' 20" E 643.51'
- ③ R=4000° Δ=4° 03' 30" L=283.33'
- ④ S 81° 52' 50" E 174.05'
- ⑤ S 8° 07' 10" W 40.00'
- ⑥ R=20° Δ=90° L=31.42'
- ⑦ S 8° 07' 10" W 234.57'
- ⑧ R=330° Δ=2° 55' 50" L=16.88'
- ⑨ S 87° 57' 30" W 136.24'
- ⑩ N 87° 08' 10" W 187.91'
- ⑪ N 70° 05' 40" W 117.17'
- ⑫ S 38° 42' 30" W 205.20'
- ⑬ N 53° 42' 58" W 728.60'

PARCEL 3 R-P

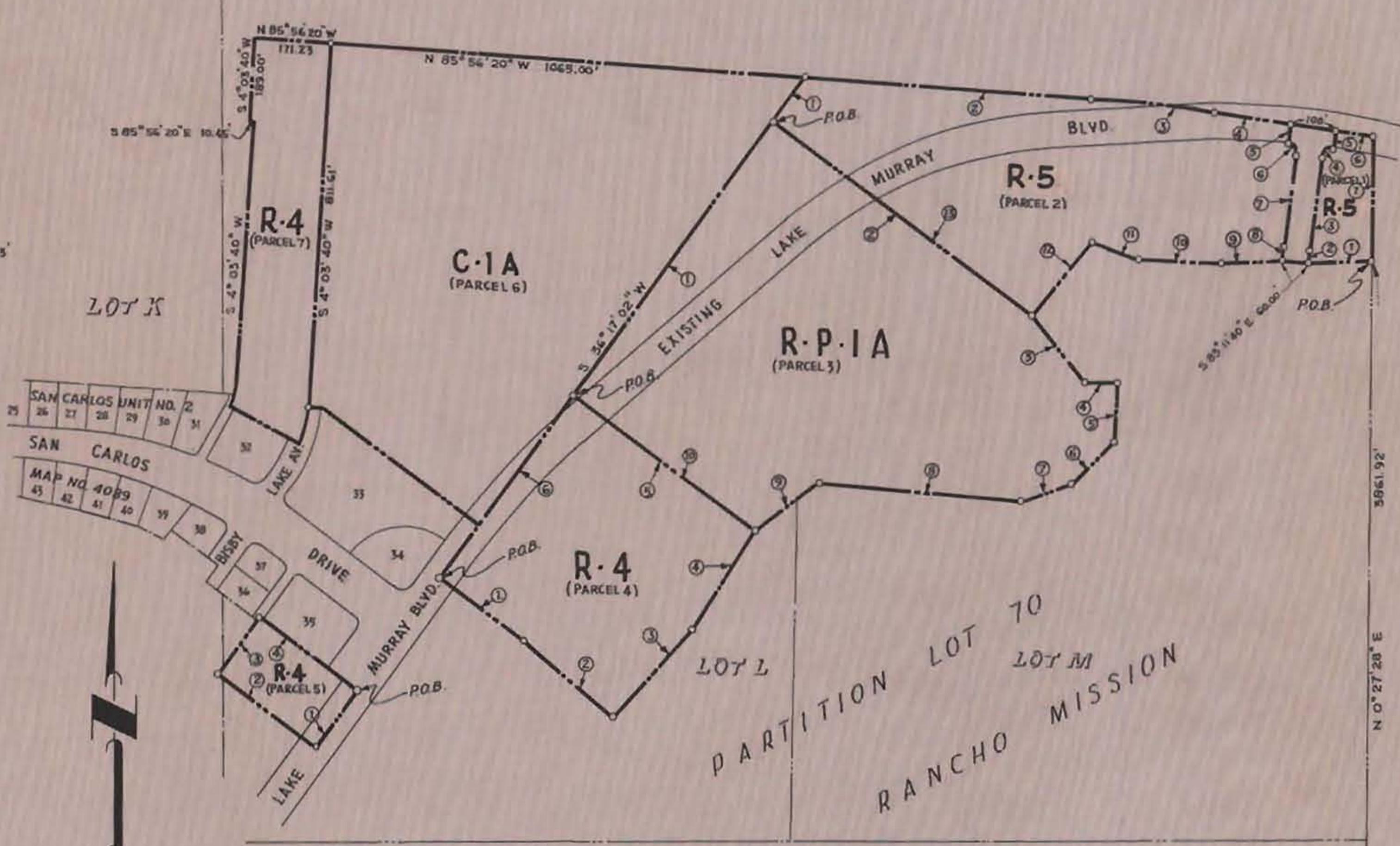
- ① N 36° 17' 02" E 753.13'
- ② S 53° 42' 58" E 728.60'
- ③ S 40° 05' 30" E 186.75'
- ④ S 89° 49' 10" E 72.94'
- ⑤ S 4° 07' 50" W 135.38'
- ⑥ S 45° 57' 30" W 134.48'
- ⑦ S 71° 51' 20" W 119.72'
- ⑧ N 85° 02' 30" W 452.47'
- ⑨ S 55° 36' 20" W 180.50'
- ⑩ N 53° 42' 58" W 508.58'

PARCEL 4 R-4

- ① S 53° 42' 58" E 232.90'
- ② S 50° 05' 50" E 264.49'
- ③ N 42° 14' 00" E 260.33'
- ④ N 32° 59' 10" E 264.60'
- ⑤ N 53° 42' 58" W 508.58'
- ⑥ S 36° 17' 02" W 506.40'

PARCEL 5 R-4

- ① S 36° 17' 02" W 157.50'
- ② N 53° 42' 58" W 282.00'
- ③ N 36° 17' 02" E 157.50'
- ④ S 53° 42' 58" E 282.00'



C-1A = 16.61 AC.
 R-5 = 9.92 AC.
 R-P = 14.14 AC.
 R-4 = 10.34 AC.
 TOTAL ACRES = 51.01

3 HOUSES	CITY PLANNING COMMISSION SAN DIEGO, CALIFORNIA	
ZONING PLAN		
PORTIONS LOTS K-L-M PARTITION LOT 70 RANCHO MISSION		
SCALE: 1"=200' DATE: 6-14-60 DRAWN: H.R.K. CHECKED:	APPROVED: Richard D. [Signature] CITY PLANNING DIRECTOR Robert Bergen SECRETARY OF COMMISSION	C-188.1