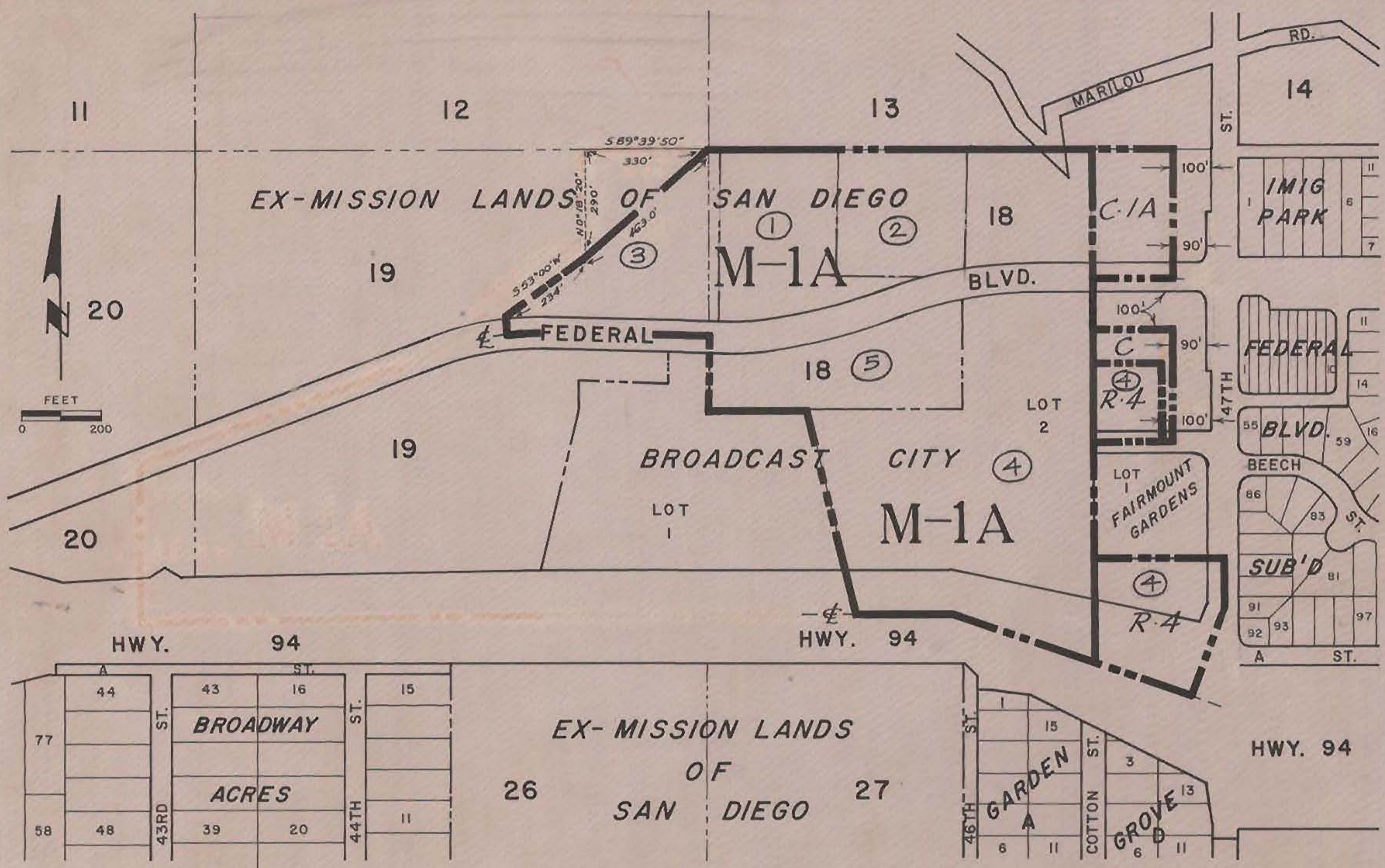


1023



ACRES ZONED - M-1A = 24.23
 C-1A = 1.56
 C = 0.55
 R-4 = 2.59
28.73 ±

CASE NO.	NO	SUB NAME	MAP NO	DATE RECORDED	ORD NO	EXPIRE DATE
27-60-6	1	GLASOE SUB	4866	OCT 31, 1961	8376	11-21-61
27-60-4	2	CHRISTMAN HTS	4870	NOV 3, 1961	8376	
27-60-3	3	F&K SUB	4879	NOV 17, 1961	8376	
27-60-2	4	BROADCAST CITY	4853	OCT 6, 1961	8376	
27-60-5	5	CALEWO SUB	4854	OCT 6, 1961	8376	

743

CITY PLANNING COMMISSION
 SAN DIEGO, CALIFORNIA

ZONING PLAN
 EX-MISSION LANDS OF S.D., POR. LOTS 18, 19, 20
 POR. BROADCAST CITY

APPROVED _____
 CITY PLANNING DIRECTOR

 SECRETARY OF COMMISSION

SCALE 1" = 200'
 DATE 9-9-60
 DRAWN E.R.K.
 CHECKED: H.R.K.

DRAWING NO.
C-190.1

CP2