

CITY PLANNING COMMISSION
SAN DIEGO, CAL.

ZONING PLAN
POR. OF SORRENTO VALLEY

DATE: 11-30-60
SCALE: 1000'
DRAWN: [Signature]
CHECKED: H.R.K.

CITY PLANNING DIRECTOR

SECRETARY OF COMMISSION

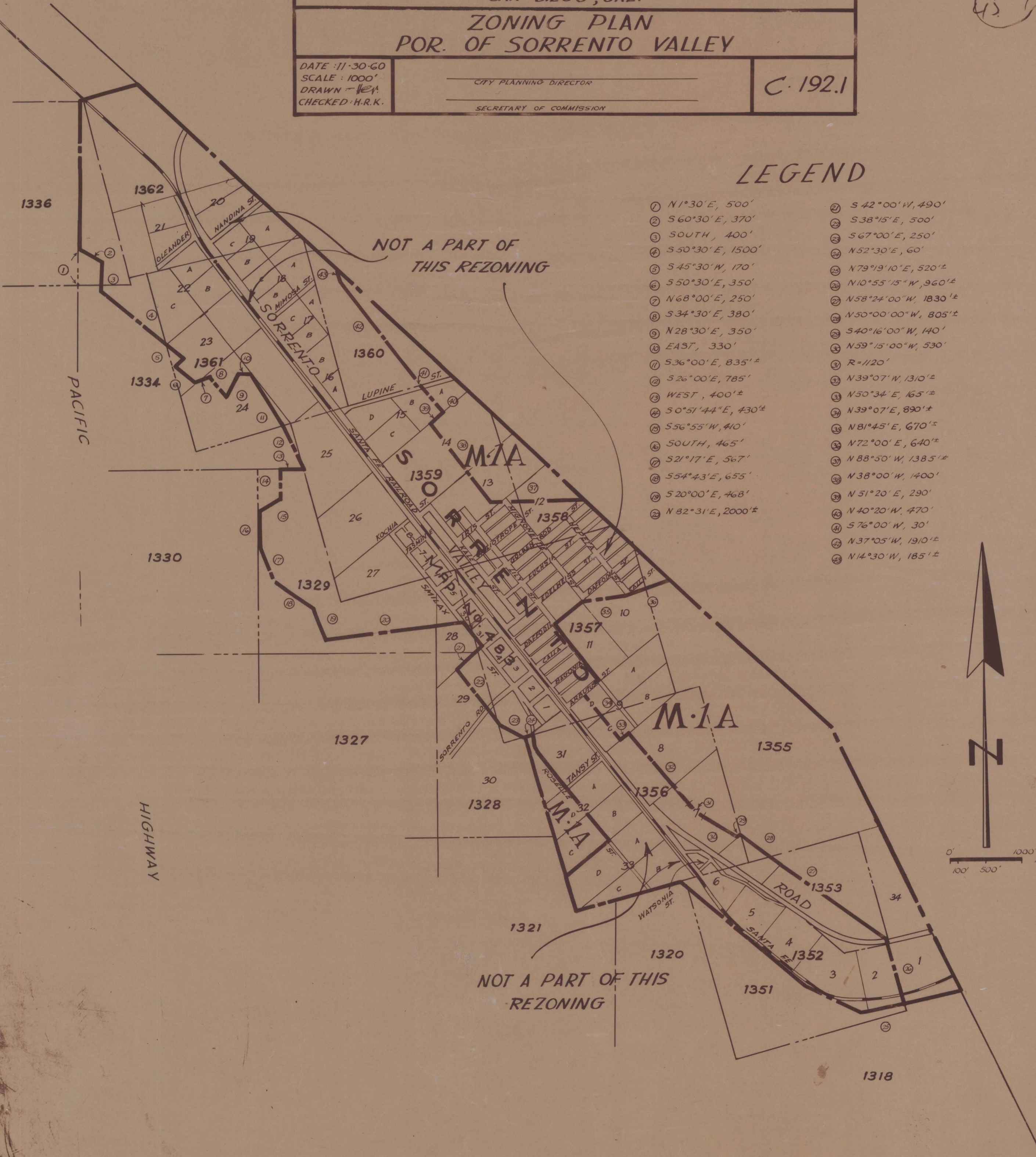
C-192.1

LEGEND

- | | |
|----------------------|-------------------------|
| ① N1°30'E, 500' | ②① S 42°00'W, 490' |
| ② S 60°30'E, 370' | ②② S 38°15'E, 500' |
| ③ SOUTH, 400' | ②③ S 67°00'E, 250' |
| ④ S 50°30'E, 1500' | ②④ N 52°30'E, 60' |
| ⑤ S 45°30'W, 170' | ②⑤ N 79°19'10"E, 520'± |
| ⑥ S 50°30'E, 350' | ②⑥ N 10°55'15"W, 960'± |
| ⑦ N 68°00'E, 250' | ②⑦ N 58°24'00"W, 1830'± |
| ⑧ S 34°30'E, 380' | ②⑧ N 50°00'00"W, 805'± |
| ⑨ N 28°30'E, 350' | ②⑨ S 40°16'00"W, 140' |
| ⑩ EAST, 330' | ②⑩ N 59°15'00"W, 530' |
| ⑪ S 36°00'E, 835'± | ③① R=1120' |
| ⑫ S 26°00'E, 785' | ③② N 39°07'W, 1310'± |
| ⑬ WEST, 400'± | ③③ N 50°34'E, 165'± |
| ⑭ S 0°51'44"E, 430'± | ③④ N 39°07'E, 890'± |
| ⑮ S 56°55'W, 410' | ③⑤ N 81°45'E, 670'± |
| ⑯ SOUTH, 465' | ③⑥ N 72°00'E, 640'± |
| ⑰ S 21°17'E, 567' | ③⑦ N 88°50'W, 1385'± |
| ⑱ S 54°43'E, 655' | ③⑧ N 38°00'W, 1400' |
| ⑲ S 20°00'E, 468' | ③⑨ N 51°20'E, 290' |
| ⑳ N 82°31'E, 2000'± | ④① N 40°20'W, 470' |
| | ④② S 76°00'W, 30' |
| | ④③ N 37°05'W, 1910'± |
| | ④④ N 14°30'W, 185'± |

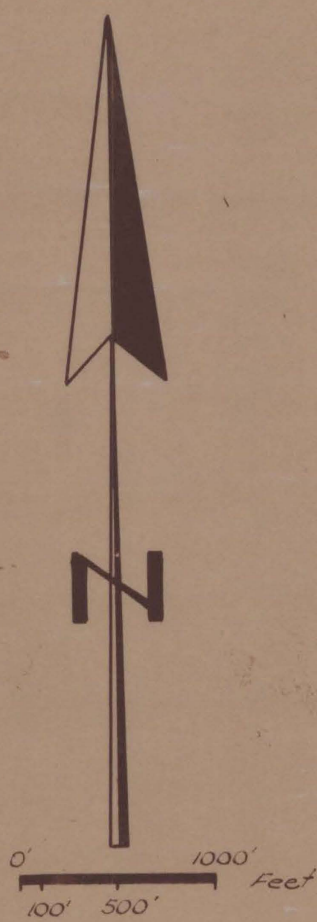
NOT A PART OF
THIS REZONING

NOT A PART OF THIS
REZONING



PACIFIC

HIGHWAY



C-192.1
CP-24
C-192