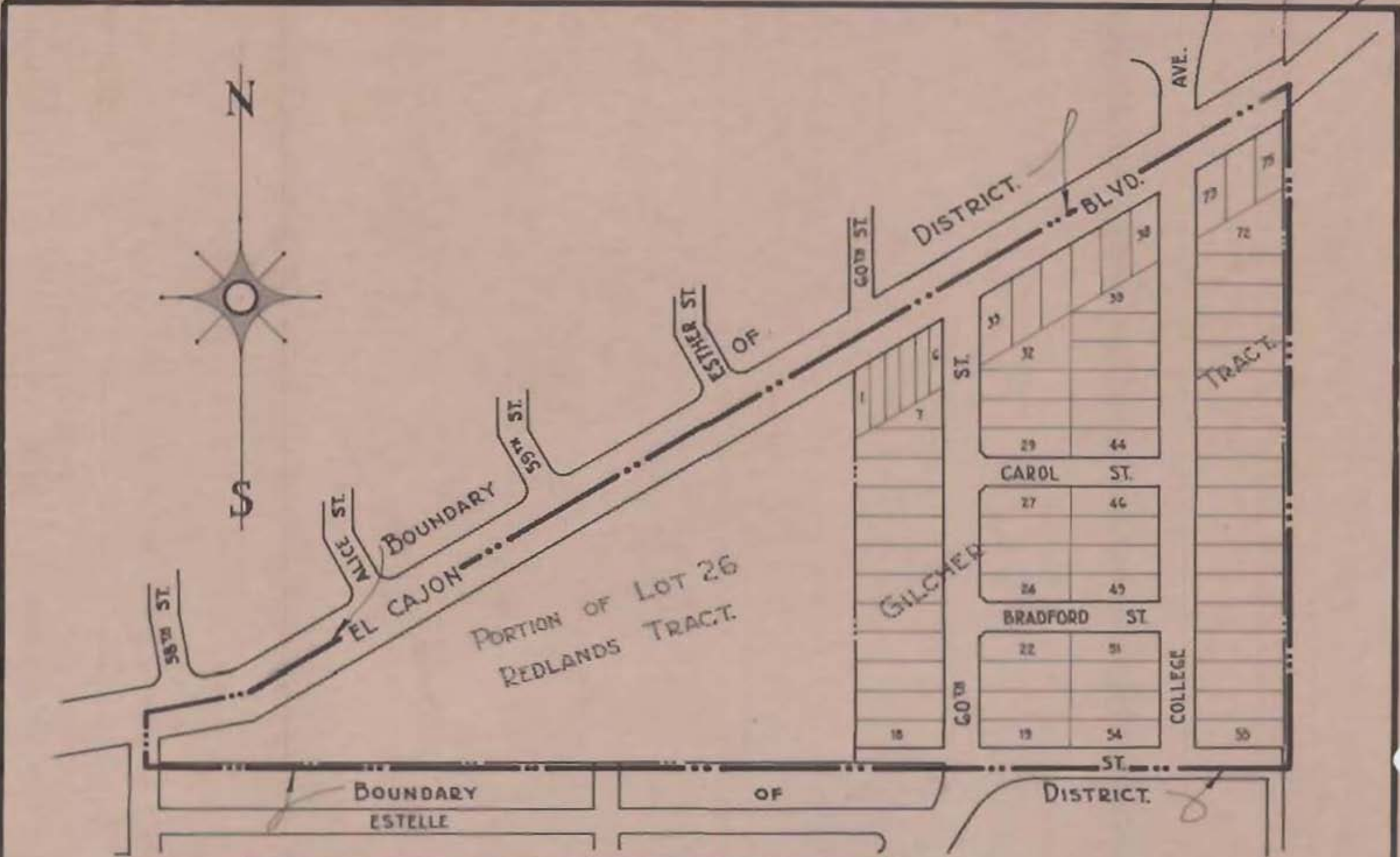


CP6



CITY PLANNING COMMISSION  
SAN DIEGO CALIFORNIA

MAP SHOWING THE AREA IN  
GILCHER TRACT AND VICINITY  
TO BE PLACED UNDER ARCHITECTURAL CONTROL

APPROVED  
*Glenn C. Rick*  
CITY PLANNING ENGINEER

SCALE  
0 50 100 150  
DATE  
7-21-38

APPROVED CITY PLANNING COMMISSION  
*L. H. Fish* PRESIDENT.  
*D. D. Calland* SECRETARY

# 11  
ORD. # 1446 (MS)  
RES. # 67957  
EFFECTIVE  
DATE 9/29/38

CP6 C-4