

P.L. 1787

P.L. 1224

BOUNDARY OF ZONE

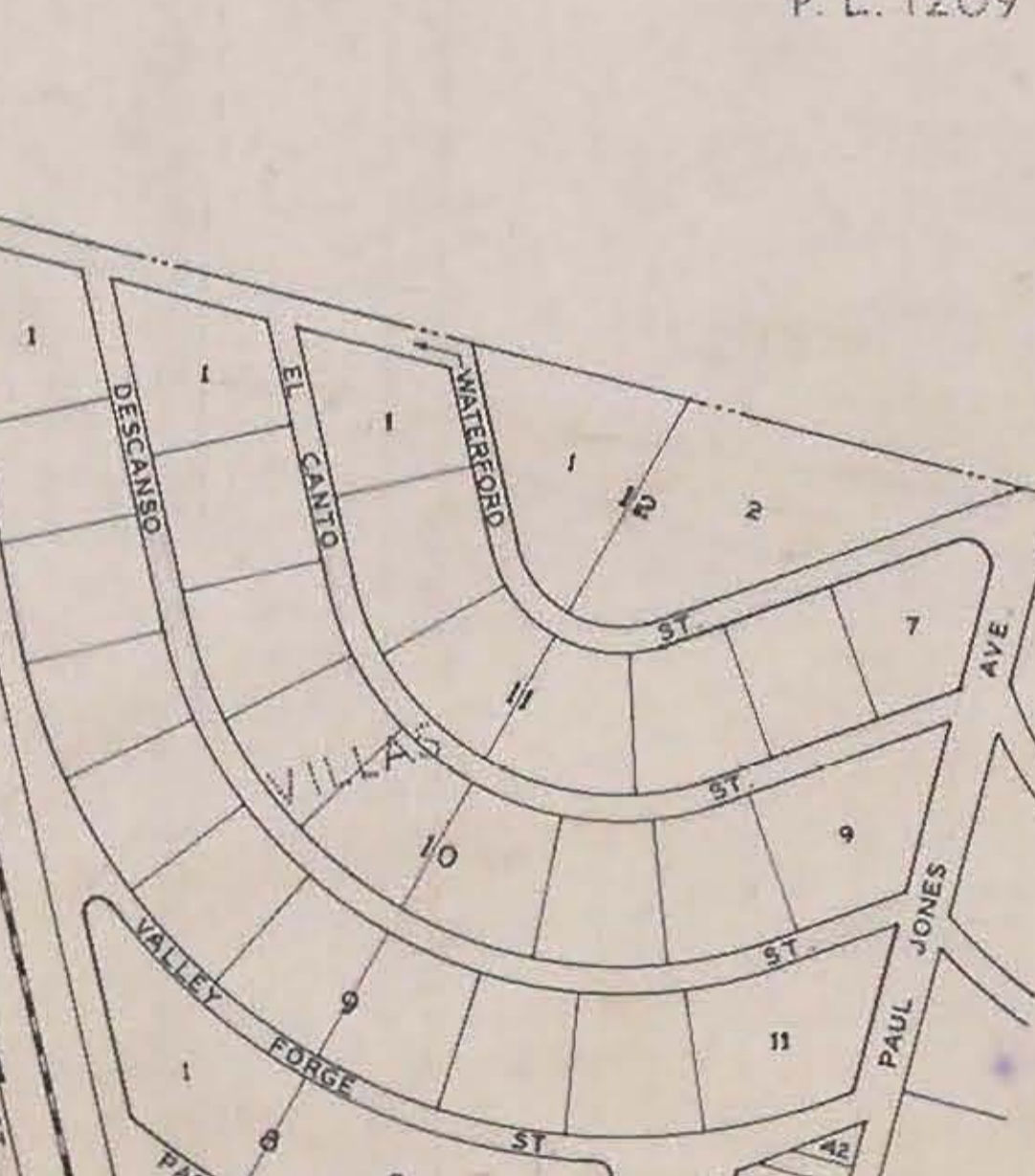
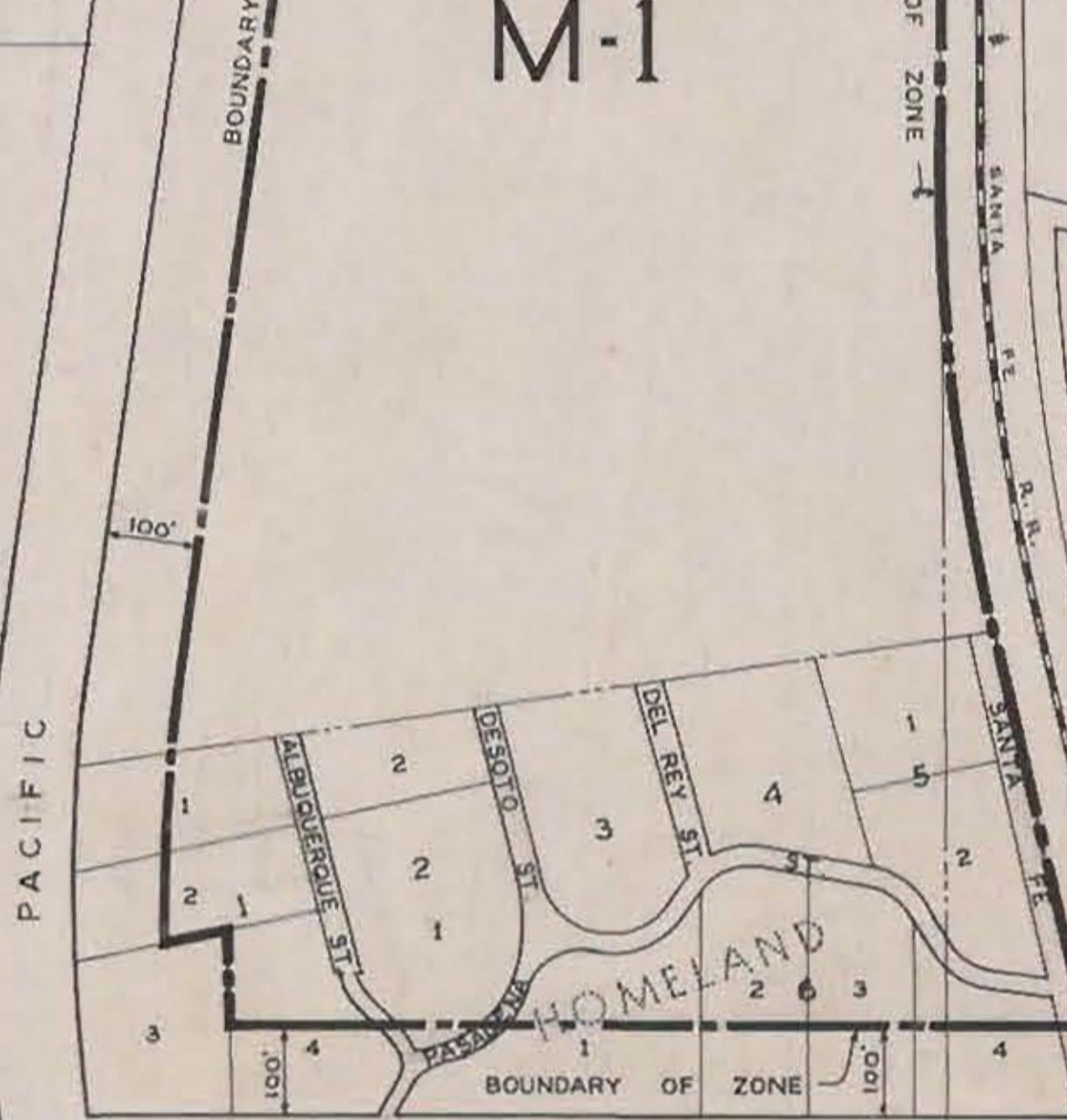
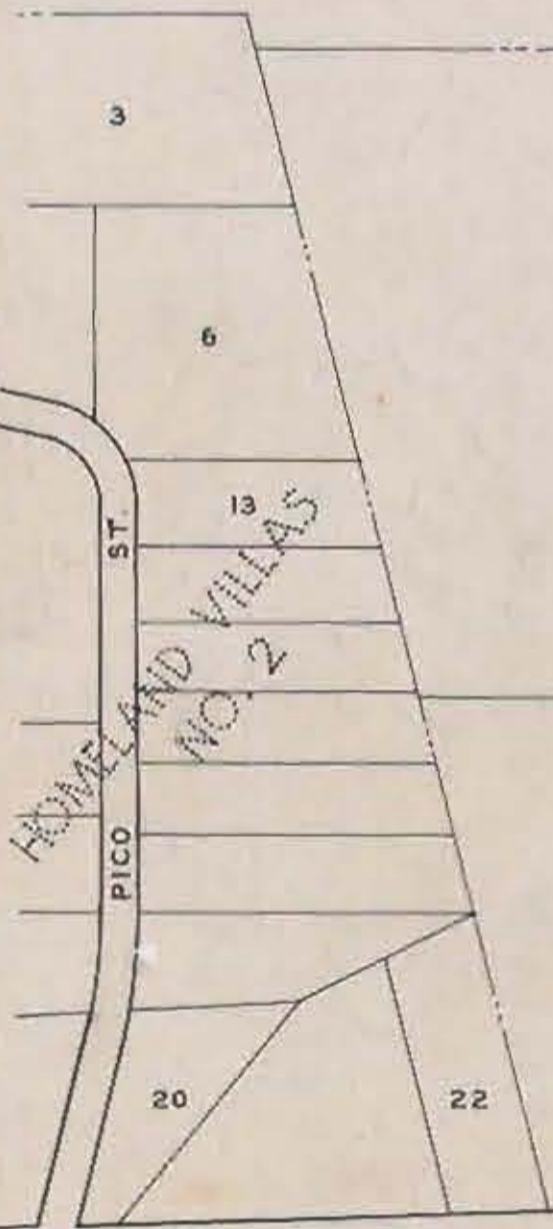
HIGHWAY

PORTION OF  
P. L. 1788

M-1

P.L. 1788

P.L. 1209



BALBOA

AVE.

P.L. 1797

P.L. 1208

DIST. NO. 20  
ORD. NO. 3061 N.S.  
EFF. DATE 10-12-45

CITY PLANNING COMMISSION  
SAN DIEGO CALIFORNIA

ZONING PLAN  
FOR PORTIONS OF  
HOMELAND VILLAS & PUEBLO LOT 1788

SCALE 1" = 200'  
DATE 6-14-45  
DRAWN M.D.R.  
CHECKED

APPROVED

*Glenn A. Rich*  
CITY PLANNING DIRECTOR  
*M. J. ...*  
SECRETARY OF COMMISSION

DRAWING NO.

C-51