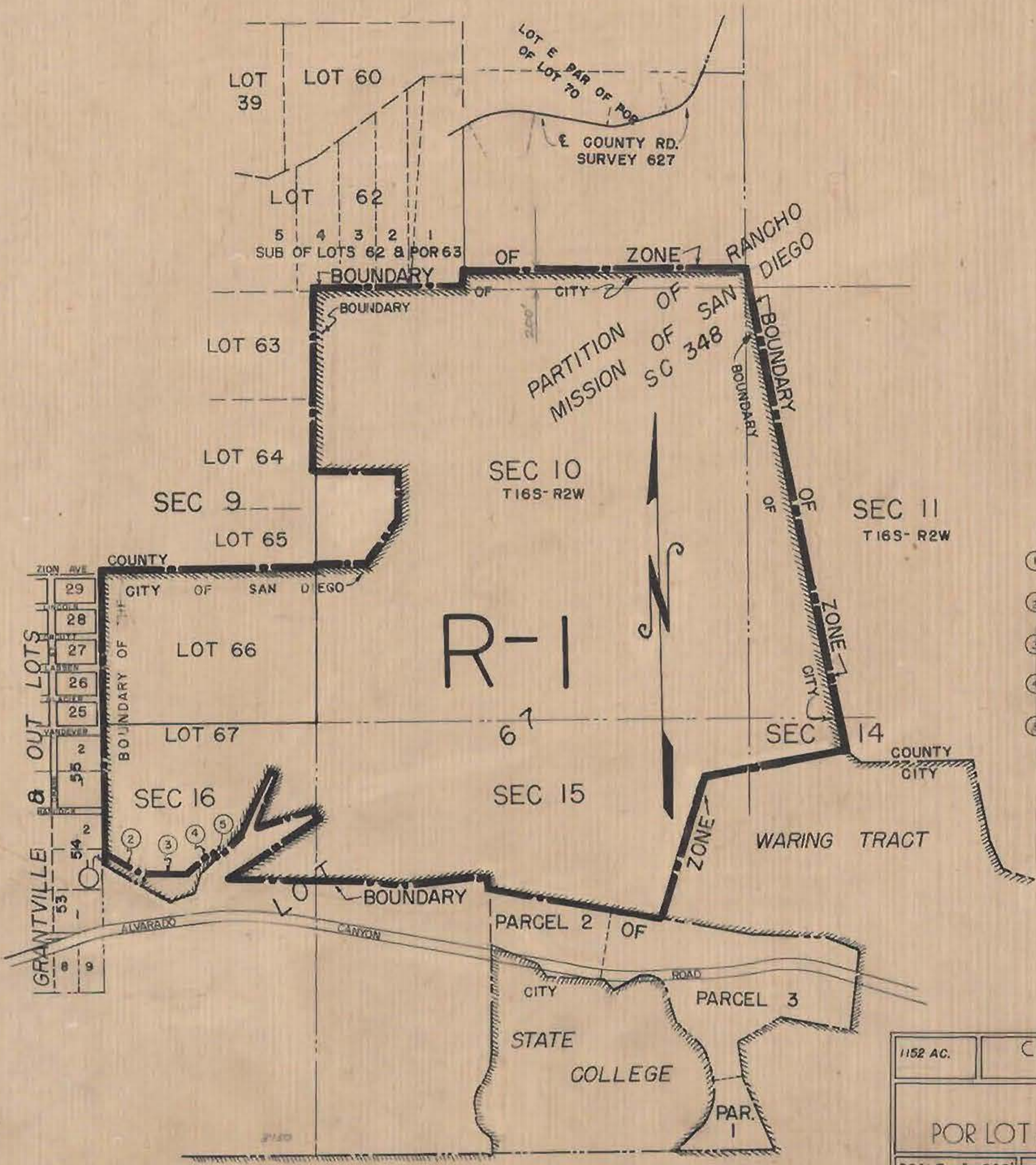


CR-12

1-600

57



- ① N 1° 06' 27" E 100' FROM SWLY CORNER OF ANNEXATION
- ② S 60° 11' 40" E 500.00'
- ③ S 48° 5' 30" E 613.95'
- ④ N 4° 25' 50" E 400.00'
- ⑤ S 46° 45' 50" E 60.03'

Apr 25, 1952

| | | |
|---|---|----------------------------|
| 1152 AC. | CITY PLANNING COMMISSION SAN DIEGO CALIFORNIA | 57 32 405 4-25-52 |
| ZONING PLAN POR LOT 66 & 67 RANCHO MISSION & VICINITY | | |
| SCALE 1"=1000' DATE 11-29-51 DRAWN J.V.C. CHECKED L.M. | APPROVED <i>Henry A. Rich</i> CITY PLANNING DIRECTOR <i>Mona Anderson</i> SECRETARY OF COMMISSION | DRAWING NO. C-71 |

CP-12