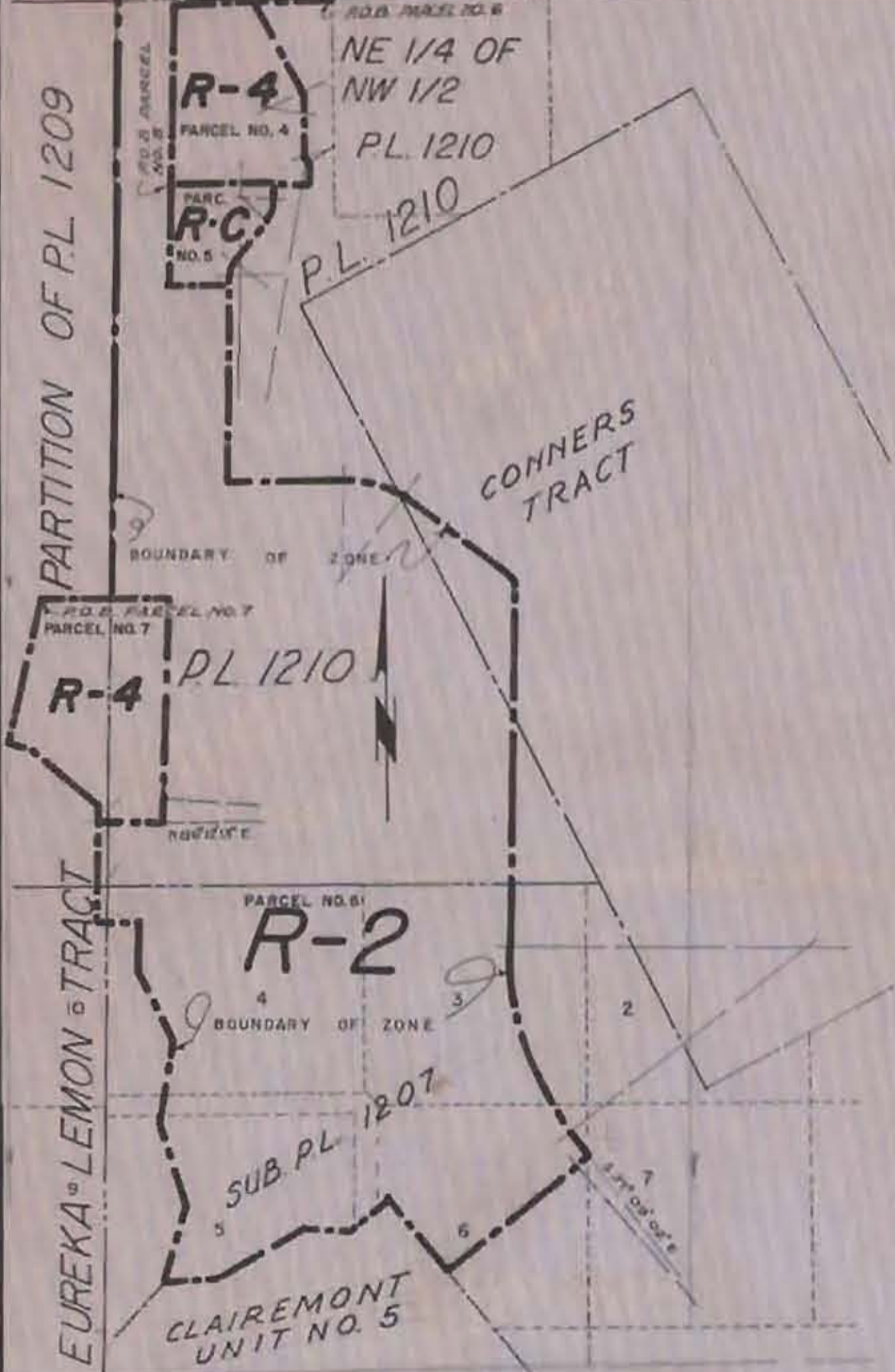
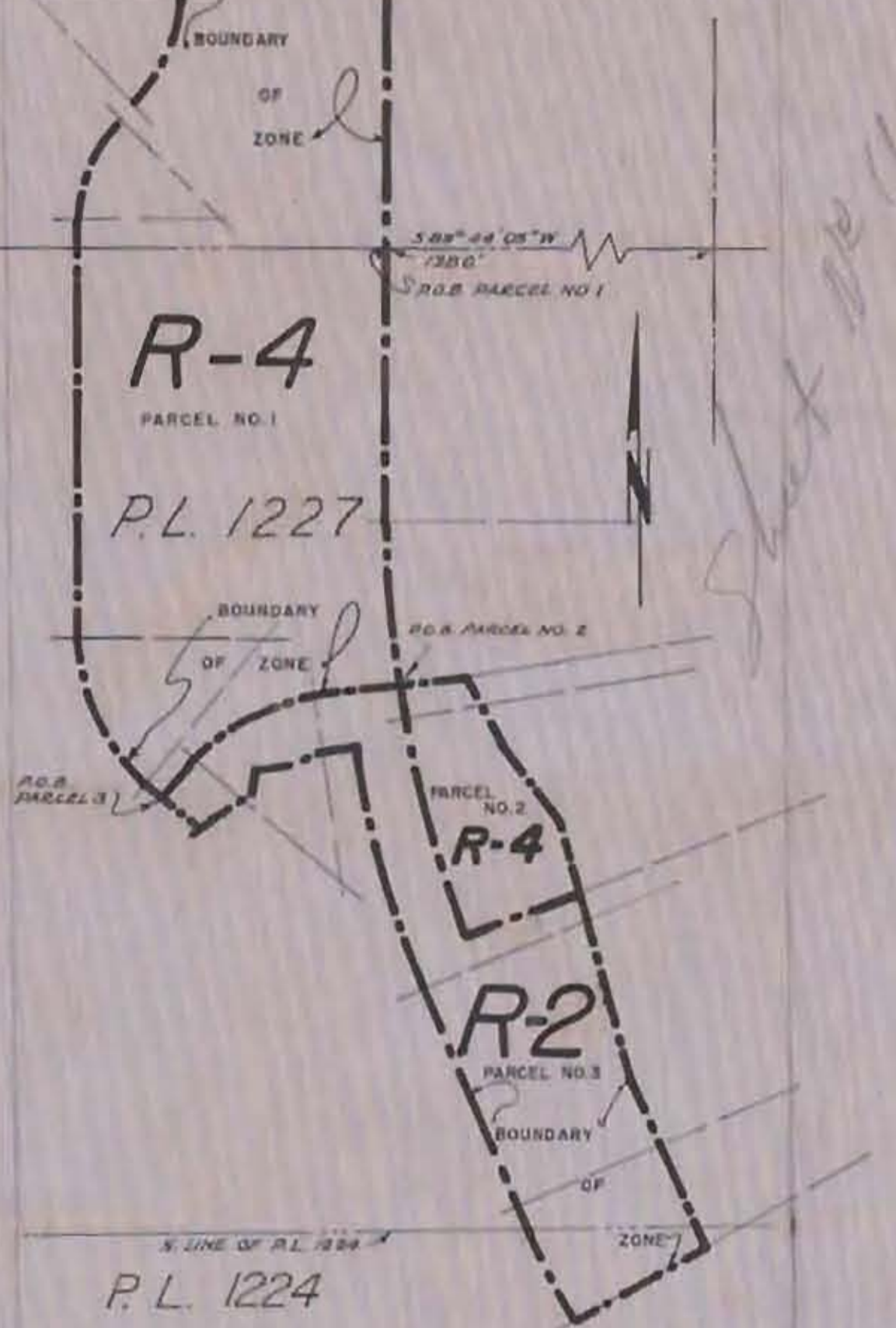


P.L. 1224 P.L. 1223



P. L. 1237



PARCEL NO. 4

1	S 26° 01' 30" E	303.52'
2	R=110' Δ=35° 17' 30" L=67.76'	
3	S 07° 16' 00" W	163.40'
4	R=10' Δ=89° 07' 33" L=15.56'	
5	S 08° 08' 27" W	51.00'
6	R=1250' Δ=7° 40' 56" L=167.60'	
7	N 89° 32' 29" W	198.54'
8	N 00° 27' 31" E	544.95'
9	S 89° 32' 29" E	225.94'

R4 = 4.4 AC

PARCEL NO. 5

1	S 89° 32' 29" E	198.54'
2	R=1250' Δ=7° 40' 56" L=167.60'	
3	S 07° 16' 00" W	163.40'
4	R=10' Δ=34° 09' 52" L=29.82'	
5	S 39° 45' 51" W	154.87'
6	R=50' Δ=39° 18' 20" L=34.30'	
7	S 0° 27' 31" W	20.00'
8	N 89° 32' 29" W	182.00'
9	N 0° 27' 31" E	292.86'

RC = 2.2 AC

PARCEL NO. 6

1	S 89° 53' 35" W	262.10'
2	N 89° 32' 29" W	225.94'
3	S 0° 27' 31" W	837.91'
4	S 89° 32' 29" E	182.00'
5	S 0° 27' 31" W	589.79'

PARCEL NO. 7

1	S 89° 25' 49" E	351.36'
2	R=300' Δ=39° 42' 18" L=186.95'	
3	S 53° 43' 31" E	414.49'
4	S 0° 27' 31" W	1098.39'
5	R=900' Δ=37° 36' 33" L=590.75'	
6	N 37° 09' 02" E	80.48'
7	R=1000' Δ=1° 59' 00" L=34.61'	
8	S 50° 51' 58" W	501.11'
9	N 39° 08' 02" W	273.00'
10	S 00° 51' 58" W	150.00'
11	N 82° 54' 50" W	210.56'
12	S 67° 30' 00" W	303.38'
13	S 82° 53' 15" W	111.79'
14	N 13° 24' 10" E	217.59'
15	N 1° 36' 30" W	283.73'
16	N 7° 44' 35" E	258.38'
17	N 26° 34' 20" W	218.73'
18	N 0° 26' 39" E	185.69'
19	N 89° 33' 21" W	116.92'
20	N 0° 26' 39" E	295.16'
21	S 89° 33' 21" E	144.85'
22	N 86° 12' 13" E	450.0'
23	R=1000' Δ=4° 15' 18" L=74.24'	
24	N 0° 27' 31" E	603.95'
25	N 89° 32' 29" W	165.00'
26	N 0° 27' 31" E	1908.07'
27	S 89° 32' 29" E	165.00'
28	N 0° 27' 31" E	41.28'
29	S 89° 32' 29" E	323.36'
30	S 42° 24' 20" E	242.05'

R4 = 5.87 AC

PARCEL NO. 1

1	S 0° 15' 55" W	723.73'
2	R=3000' Δ=8° 24' 02" L=440.17'	
3	S 81° 51' 53" W	234.93'
4	R=500' Δ=42° 05' 58" L=367.39'	
5	S 39° 45' 50" W	123.57'
6	N 50° 14' 05" W	60.18'
7	R=500' Δ=80° 30' 00" L=440.70'	
8	N 0° 15' 55" E	119.54'
9	R=375' Δ=45° 00' 00" L=294.52'	
10	N 45° 15' 55" E	60.82'
11	R=400' Δ=48° 00' 00" L=314.16'	
12	N 0° 15' 55" E	483.62'
13	S 89° 44' 05" E	550.00'
14	S 0° 15' 55" W	1150.00'

R4 = 4.132 AC

PARCEL NO. 2

1	N 81° 51' 53" E	50.24'
2	S 82° 36' 00" E	133.54'
3	S 26° 54' 10" E	287.84'
4	S 39° 50' 40" E	282.97'
5	S 15° 23' 10" E	108.63'
6	S 68° 35' 45" W	295.26'
7	S 68° 30' 27" W	48.07'
8	R=3000' Δ=13° 21' 26" L=699.39'	

R4 = 4.48 AC

PARCEL NO. 3

1	N 39° 45' 55" E	123.57'
2	R=500' Δ=42° 05' 58" L=367.39'	
3	N 81° 51' 53" E	234.93'
4	R=3000' Δ=13° 21' 26" L=699.39'	
5	N 68° 30' 27" E	48.07'
6	N 68° 35' 45" E	295.26'
7	S 15° 23' 10" E	598.80'
8	S 23° 12' 29" E	405.46'
9	S 60° 33' 17" W	398.68'
10	R=3155' Δ=6° 14' 14" L=343.45'	
11	N 23° 12' 29" W	620.08'
12	R=3155' Δ=12° 23' 50" L=682.66'	
13	S 79° 11' 27" W	110.00'
14	S 68° 36' 30" W	56.96'
15	S 79° 00' 30" W	102.15'
16	S 10° 15' 10" W	63.67'
17	S 55° 48' 00" W	133.82'
18	S 47° 42' 00" W	28.00'
19	R=400' Δ=7° 56' 05" L=315.39'	
20	N 50° 14' 05" W	67.56'

R2 = 148 AC

PARCEL NO. 4

1	S 26° 01' 30" E	303.52'
2	R=110' Δ=35° 17' 30" L=67.76'	
3	S 07° 16' 00" W	163.40'
4	R=10' Δ=89° 07' 33" L=15.56'	
5	S 08° 08' 27" W	51.00'
6	R=1250' Δ=7° 40' 56" L=167.60'	
7	N 89° 32' 29" W	198.54'
8	N 00° 27' 31" E	544.95'
9	S 89° 32' 29" E	225.94'

R4 = 56.07 AC  
R2 = 82.75 AC  
RC = 2.2 AC

CITY PLANNING COMMISSION  
SAN DIEGO, CALIFORNIA

ZONING PLAN

PORTIONS OF P.L. 1207, 1209, 1210, 1224, 1226, 1227, AND P.L. 1237

SCALE 1" = 400'  
DATE 4-24-52  
DRAWN BY LM  
CHECKED BY LM

APPROVED

*Hamrick*  
CITY PLANNING DIRECTOR  
*Mona Anderson*  
SECRETARY OF COMMISSION

DRAWING NO.  
**C-81**