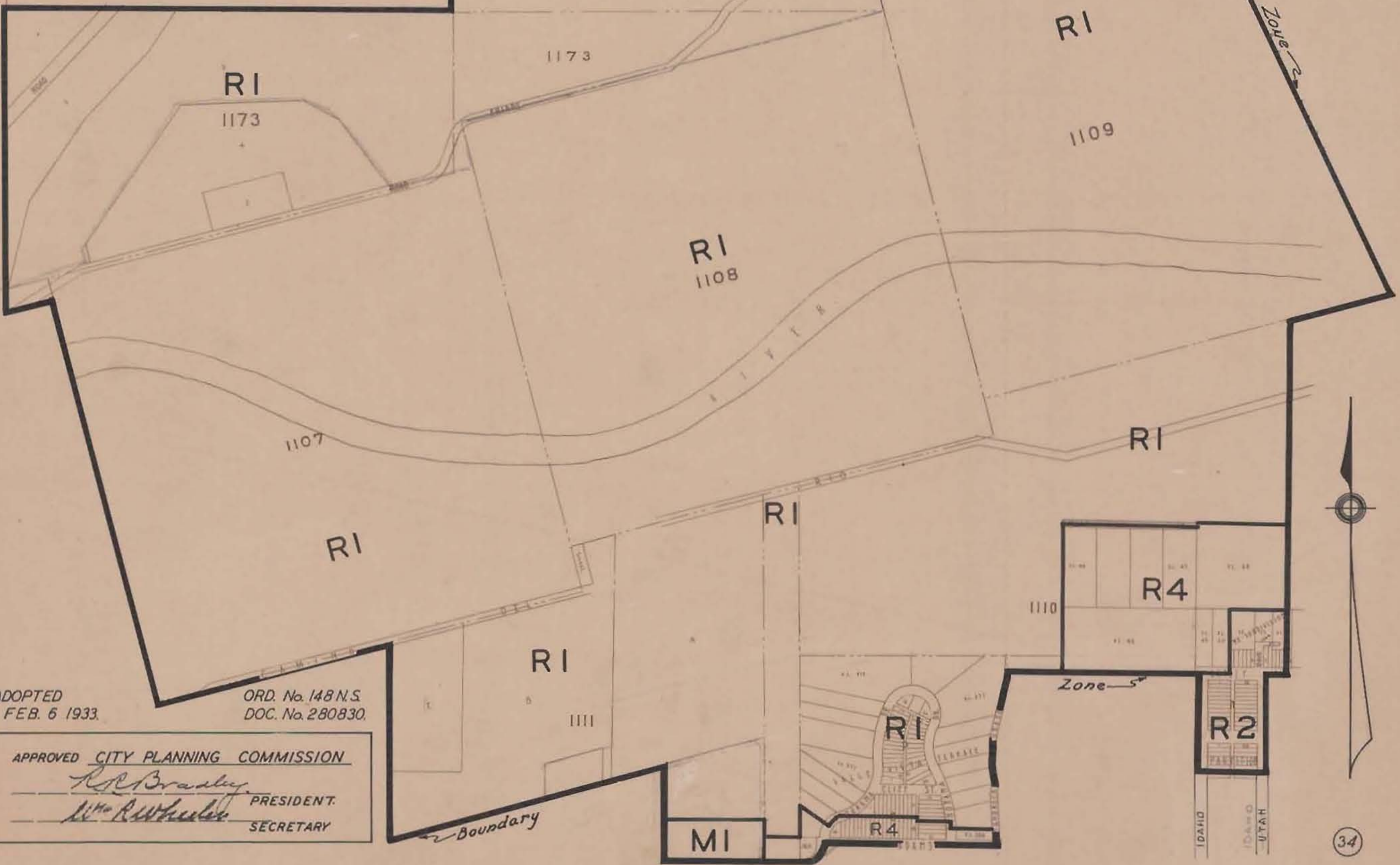


CITY PLANNING COMMISSION
 SAN DIEGO CALIFORNIA

ZONING PLAN
 VALLE VISTA TERRACE AND A
 PORTION OF MISSION VALLEY

APPROVED
Glen A. Rich
 CITY PLANNING ENGINEER

SCALE IN FEET
 0 200 400 600 800 1000
 DATE
 Jan. 19, 1933



ADOPTED
 FEB. 6 1933.

ORD. No. 148 N.S.
 DOC. No. 280830.

APPROVED CITY PLANNING COMMISSION

R. B. Bradley PRESIDENT
W. A. Wheeler SECRETARY



34

CP4
 (#34)
 Z-173
 INCORPORATED WITH #42