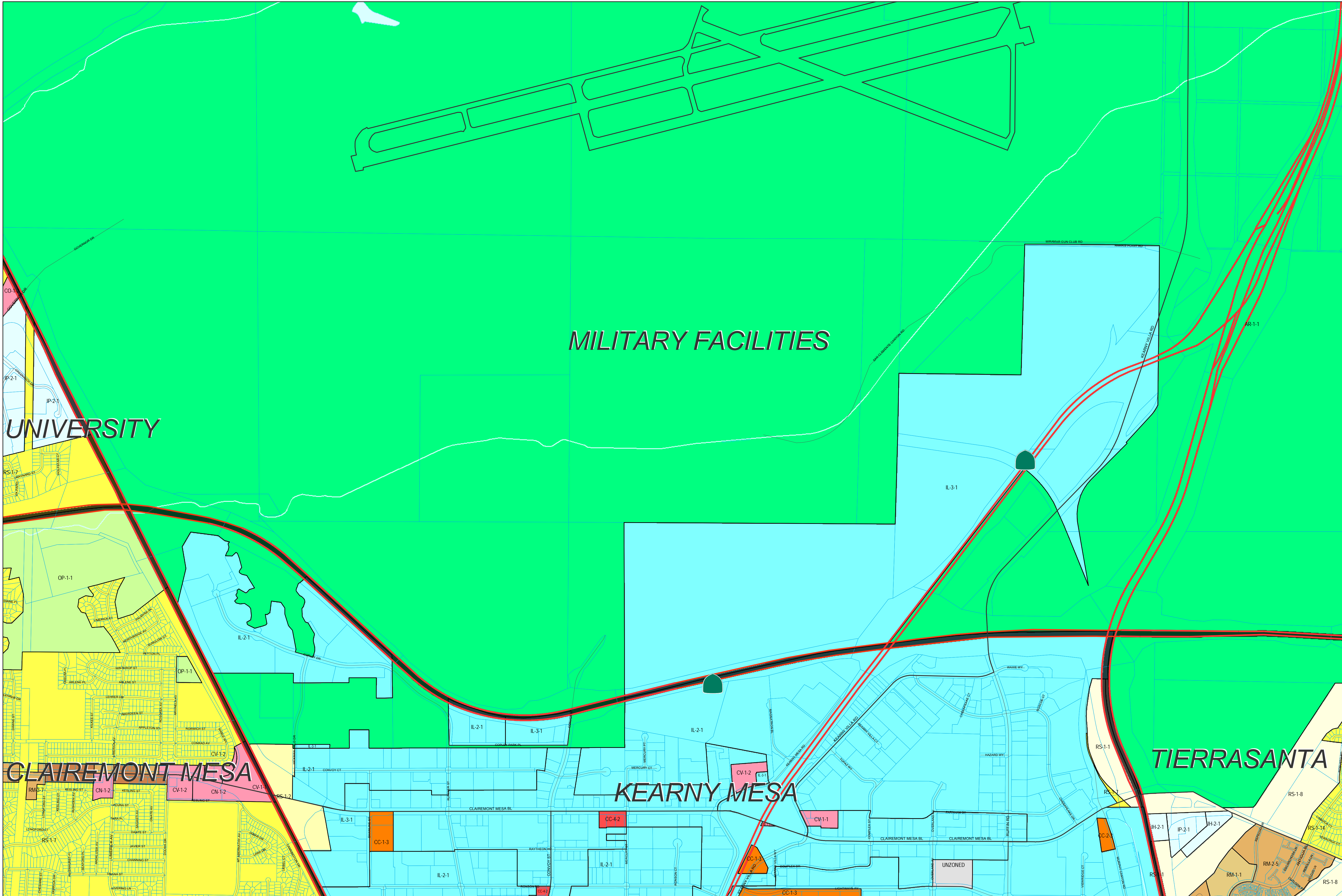


Official Zoning Map



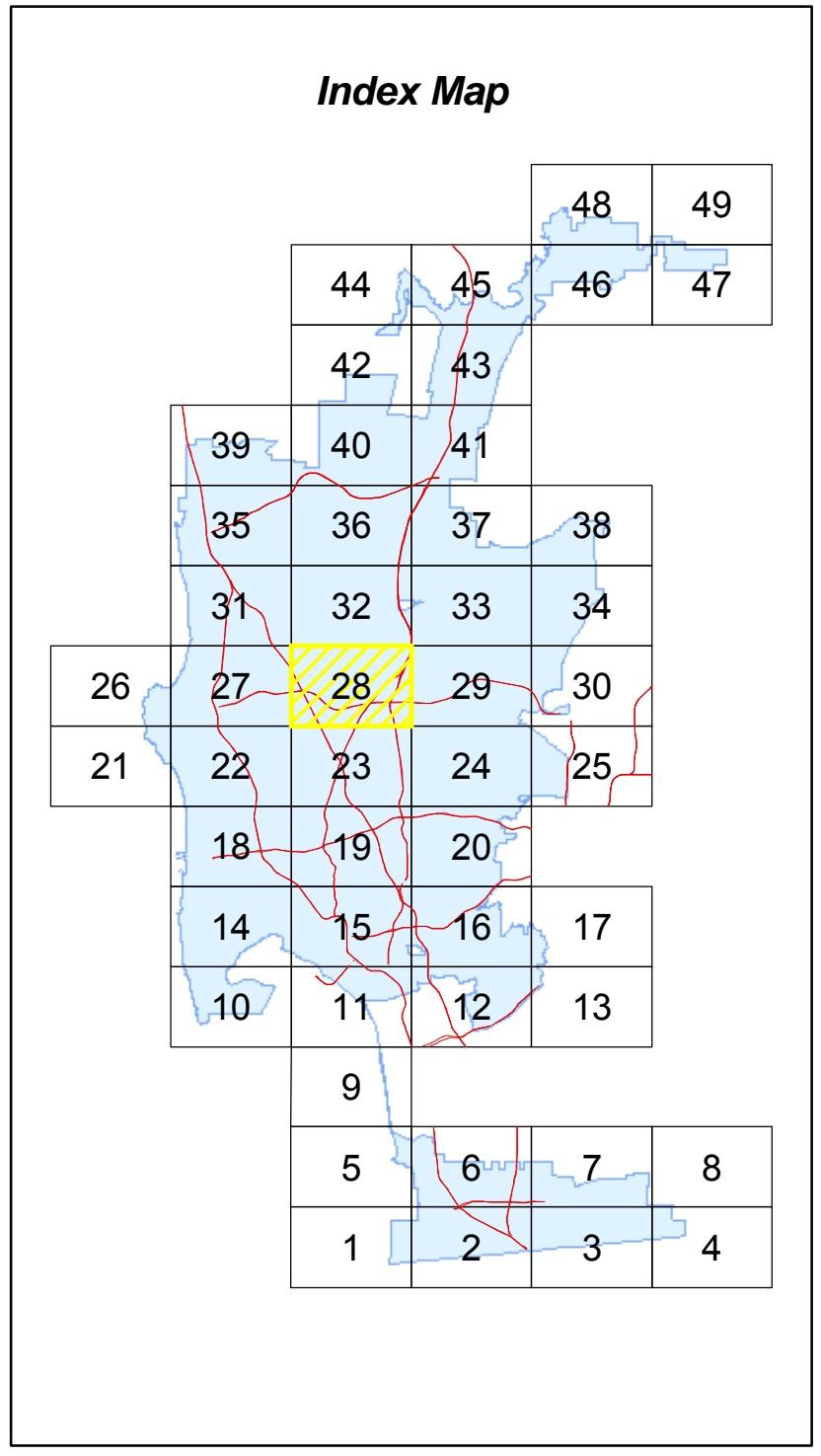
Legend

- City of San Diego Boundary
- Community Plan Areas
- Parcels

Zoning

ZONE_NAME

- AR-1-1
- CC-1-3
- CC-2-3
- CC-4-2
- CN-1-2
- CO-1-2
- CV-1-1
- CV-1-2
- IH-2-1
- IL-2-1
- IL-3-1
- IP-2-1
- OP-1-1
- RM-1-1
- RM-2-5
- RM-3-7
- RM-3-9
- RS-1-1
- RS-1-14
- RS-1-2
- RS-1-7
- RS-1-8
- UNZONED

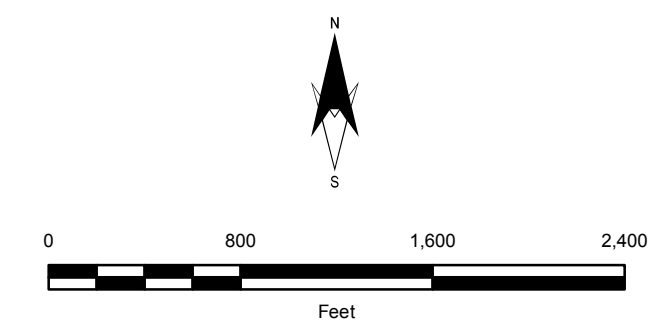


SanGIS Basemap Accuracy
 SanGIS Land (Lot) basemap data for the City of San Diego tested 20.7' horizontal accuracy at the 95% confidence level.
 This data meets the ASPRS Standard for Class 1 Map Accuracy at a scale of 1:12,000 (1"=1,000').
 This assessment assumes utilization of the data on a citywide basis. Localized data may exceed or fail to meet this accuracy with errors in excess of 100' possible.

THIS MAP/DATA IS PROVIDED WITHOUT WARRANTY OF ANY KIND, EITHER EXPRESS OR IMPLIED, INCLUDING BUT NOT LIMITED TO, THE IMPLIED WARRANTIES OF MERCHANTABILITY AND FITNESS FOR A PARTICULAR PURPOSE. Note: This product may contain information reproduced with permission from SANDAG. This product may contain information reproduced with permission from RAND MCHALLY & COMPANY, INC. This map is copyrighted by RAND MCHALLY & COMPANY, INC. It is unlawful to copy or reproduce all or any part thereof, whether for personal use or resale, without the prior written permission of RAND MCHALLY & COMPANY, INC. Copyright SanGIS 2009 - All Rights Reserved. Full text of this legal notice can be found at: http://www.sangis.org/Legal_Notice.htm



City of San Diego
Development Services Department



GRID TILE: 28
 GRID SCALE: 800
 DATE: 3/23/2010 11:18:55 AM