

SPECIAL ENUMERATION AREAS

SAN DIEGO COUNTY, CALIFORNIA

SPECIAL ENUMERATION AREAS

- 37-21 Naval Training and Distribution Center, Fleet Marine Force, Camp Elliott, Naval Operating Base San Diego (Pt.) (In El Cajon Judicial Township)
- 37-25 Naval Training and Distribution Center, Fleet Marine Force, Camp Elliott, Naval Operating Base, San Diego (Pt.) (In El Cajon Judicial Township)
- 37-26 Nazareth House Orphanage (Old Mission) (In El Cajon Judicial Township)
- 37-29 Edgemoor Farm (In El Cajon Judicial Township)
- 37-63 Del-Mar Turf and Surf Hotel (In Encinitas Judicial Township)
- 37-65 Marine Corps Air Station, Miramar, California (San Diego) (In Encinitas Judicial Township)
- 37-66 Naval Training and Distribution Center, Fleet Marine Force, Camp Elliott, Naval Operating Base, San Diego (Pt.) (In Encinitas Judicial Township)
- 37-82 Naval Training and Distribution Center, Fleet Marine Force, Camp Elliott, Naval Operating Base, San Diego (Pt.) (In Escondido Judicial Township)
- 37-86 Camp Pendleton, Amphibious Training Base, Naval Ammunition Depot and Naval Hospital, Santa Margarita Ranch (Pt.) Oceanside, California (In Fallbrook Judicial Township)
- 37-96 Chollas Heights Radio Station 11th Naval District, San Diego, California (In Homeland Judicial Township)
- 37-112 Jacumba Hot Springs Hotel and Cottages (In Jacumba Judicial Township)
- 37-193 Coronado Heights Annex, Naval Air Station, San Diego, California (In National Judicial Township)
- 37-195 Naval Supplementary Radio Station Imperial Beach, San Diego, California (In National Judicial Township)
- 37-198 Machine Gun Training Center, Border Field (San Diego, California) (In National Judicial Township)
- 37-200 Auxiliary Air Station, Home Field (San Diego, California) (In National Judicial Township)
- 37-203 Naval Air Station, San Diego, California (In National Judicial Township)
- 37-225 Camp Pendleton, Amphibious Training Base, Naval Ammunition Depot and Naval Hospital, Santa Margarita Ranch, Oceanside, California (In Oceanside Judicial Township)
- 37-227 Academy of the Little Flower St. Therese of The Child Jesus (In Oceanside Judicial Township)

115 - *Fredericktowne road - Chula Vista*
 114 - *Area Surrounding Fredericktowne*
 152 - *Paradise Valley San Marcos*

SEE DETAILED MAPS FOR:

- AREA SOUTH OF CHULA VISTA (UNINC.)
- CARLSBAD (UNINC.)
- CHULA VISTA
- CORONADA
- EL CAJON
- ESCONDIDO
- LA MESA
- NATIONAL CITY
- OCEANSIDE
- RAMONA (UNINC.)
- URBANIZED AREA
- FALLBROOK (UNINC.)
- VISTA (UNINC.)

1950 SUPERVISOR'S MAP, SET 1

- 1950 ED'S 37-1 TO 37-250
- COUNTY AND MCD (TOWNSHIP) (RED)
 - INCORPORATED PLACE (GREEN)
 - UNINCORPORATED PLACE (PURPLE)
 - ENUMERATION DISTRICT (ORANGE)
 - CENSUS TRACT (BROWN)

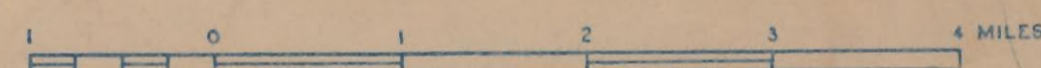
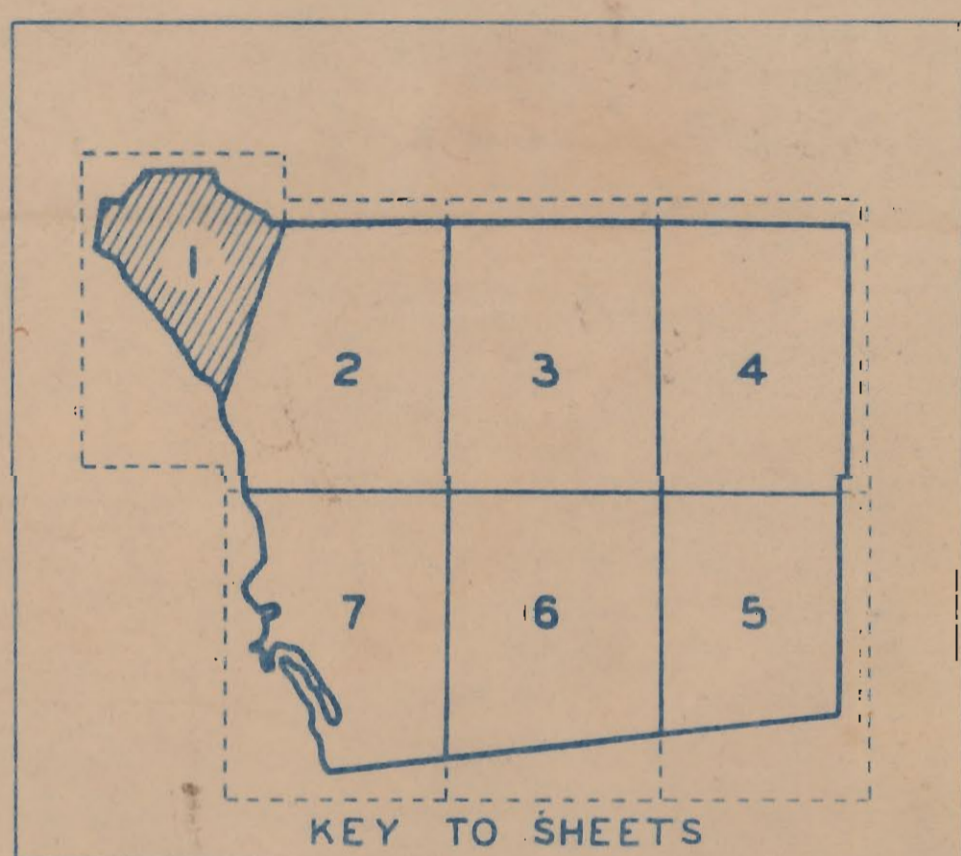
GENERAL HIGHWAY MAP SAN DIEGO COUNTY CALIFORNIA

PREPARED BY THE
DEPARTMENT OF PUBLIC WORKS
DIVISION OF HIGHWAYS
IN COOPERATION WITH THE
U.S. DEPARTMENT OF AGRICULTURE
BUREAU OF PUBLIC ROADS
DATA OBTAINED FROM
STATE-WIDE HIGHWAY PLANNING SURVEY

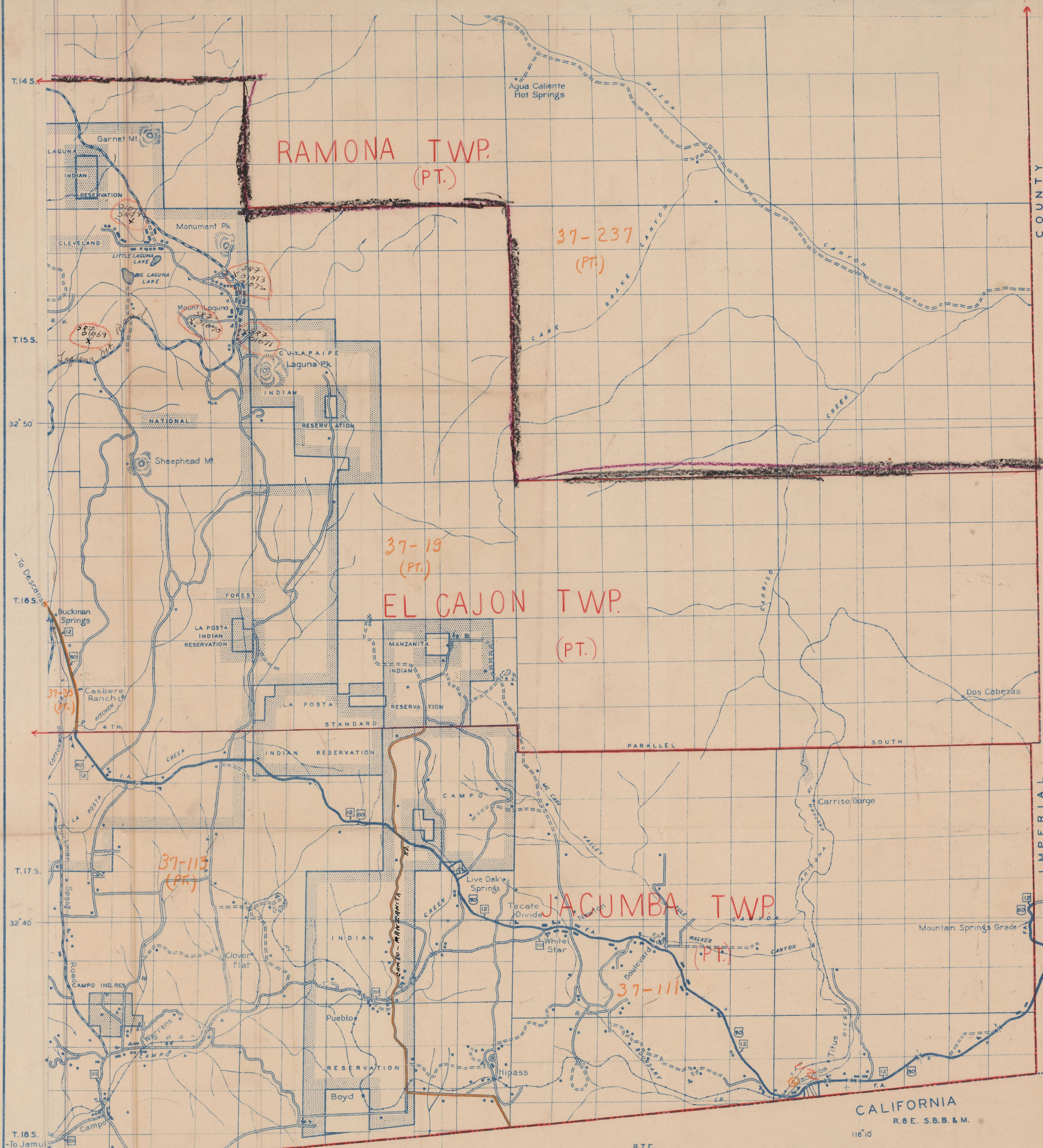
1937

LEGEND

- | | | | |
|--|---|---|--|
| <ul style="list-style-type: none"> PRIMITIVE ROADS UNIMPROVED ROADS GRADED DRAINED RDS SOIL SURFACED RDS METAL SURFACED RDS BITUMINOUS ROADS PAVED ROADS AIR ROUTES TUNNEL FORD FERRY-FR FREE-TF-TOLL HIGHWAY BRIDGE DRAWBRIDGE SUSPENSION BRIDGE ARCH BRIDGE TRUSS BRIDGE | <ul style="list-style-type: none"> U.S. HIGHWAY STATE HIGHWAY ROUTING FEDERAL AID SYSTEM RAILROAD & R.R. STATION ELECTRIC RAILROAD NARROW GAUGE R.R. GRADE CROSSING R.R. ABOVE-OVERPASS R.R. BELOW-OVERPASS MILITARY AIRPORT DEPT. OF COMMERCE INT. INTERMEDIATE FIELD COMMERCIAL OR MUNICIPAL FIELD MARSHED AUXILIARY FIELD EMERGENCY FIELD | <ul style="list-style-type: none"> STATE CAPITAL COUNTY SEAT CITIES OR VILLAGES INCORPORATED CITY CONGESTED AREA CULTURE NOT SHOWN STATE BOUNDARY COUNTY BOUNDARY CORPORATE LIMITS TOWNSHIP LINES SECTION LINES PARK OR RESERVATION BOD. IRRIGATION DITCH DRAINAGE DITCH CANAL SHIP OR BARGE LINES HEAD OF NAVIGATION DAM | <ul style="list-style-type: none"> SMALL PARKS FAIR GROUNDS, RACE COURSES & SPEEDWAYS GOLF COURSE OR COUNTRY CLUB ATHLETIC FIELD OR AMUSEMENT PARK CEMETERY MINE OR QUARRY OIL OR GAS WELLS TANKS OR REFINERIES POWER PLANT RADIO STATION FIRE LOOKOUT STA. FOREST RANGER STA. FARM UNIT DWELLING OR SUMMER COTTAGE ROWS OR GROUPS OF DWELLINGS STORE, GAS STA. OR SMALL BUSINESS TOWNHALL ORANGE OR COMMUNITY HALL HOTEL OR RESORT CHURCH SCHOOLHOUSE CORRECTIONAL INSTITUTIONS HOSPITALS FACTORY, WAREHOUSE OR INDUSTRIAL PLANT CAMP OR LODGE SAWMILL |
|--|---|---|--|

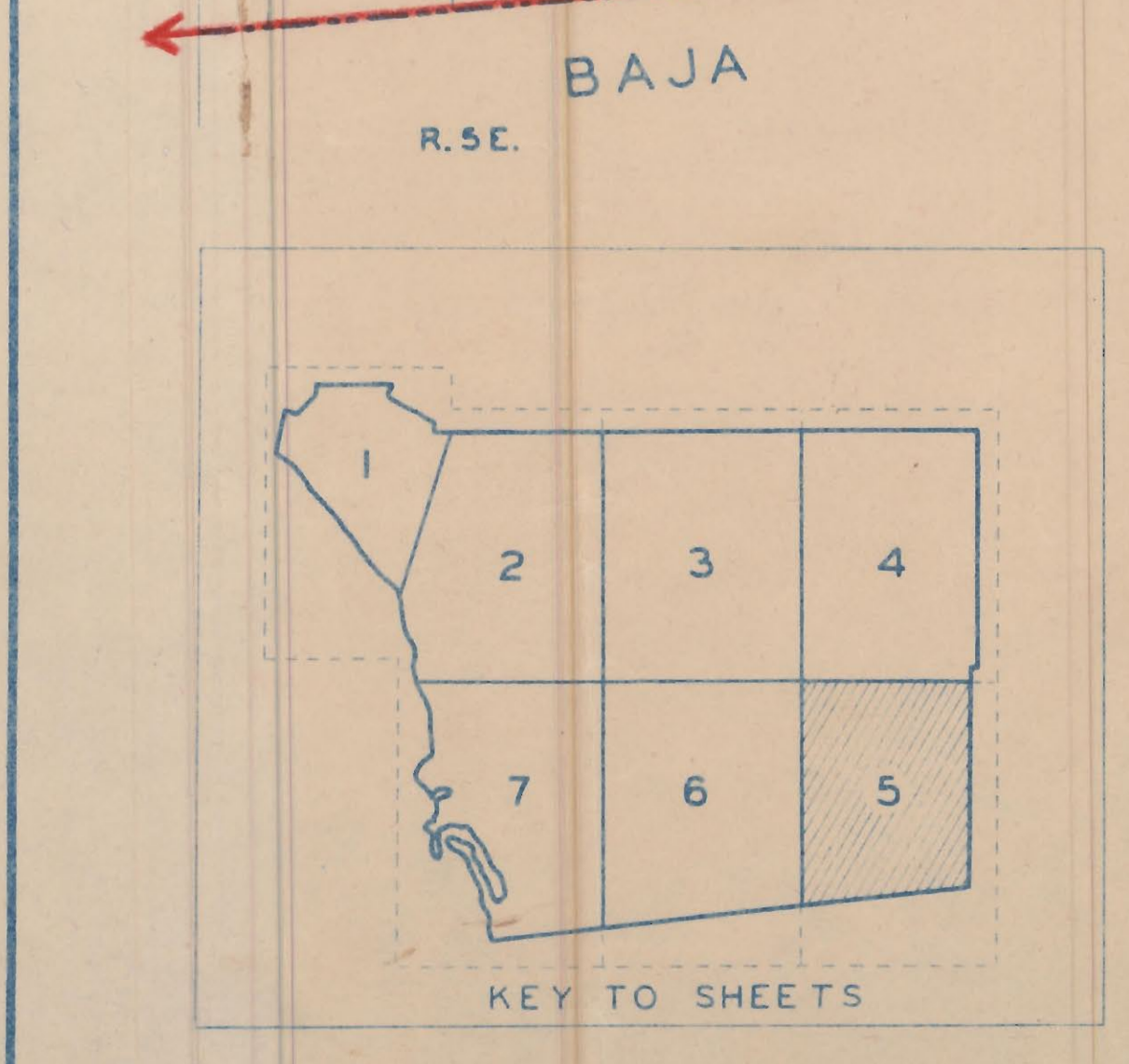


REF. NO. 10-1-37 LOCATION:
 AREA: *San Diego County*
 INFO. ST. *San Diego*
 SCALE: *1" = 10 Miles*
 DATE: *1937*



1950 SUPERVISOR'S MAP, SET 2

5967

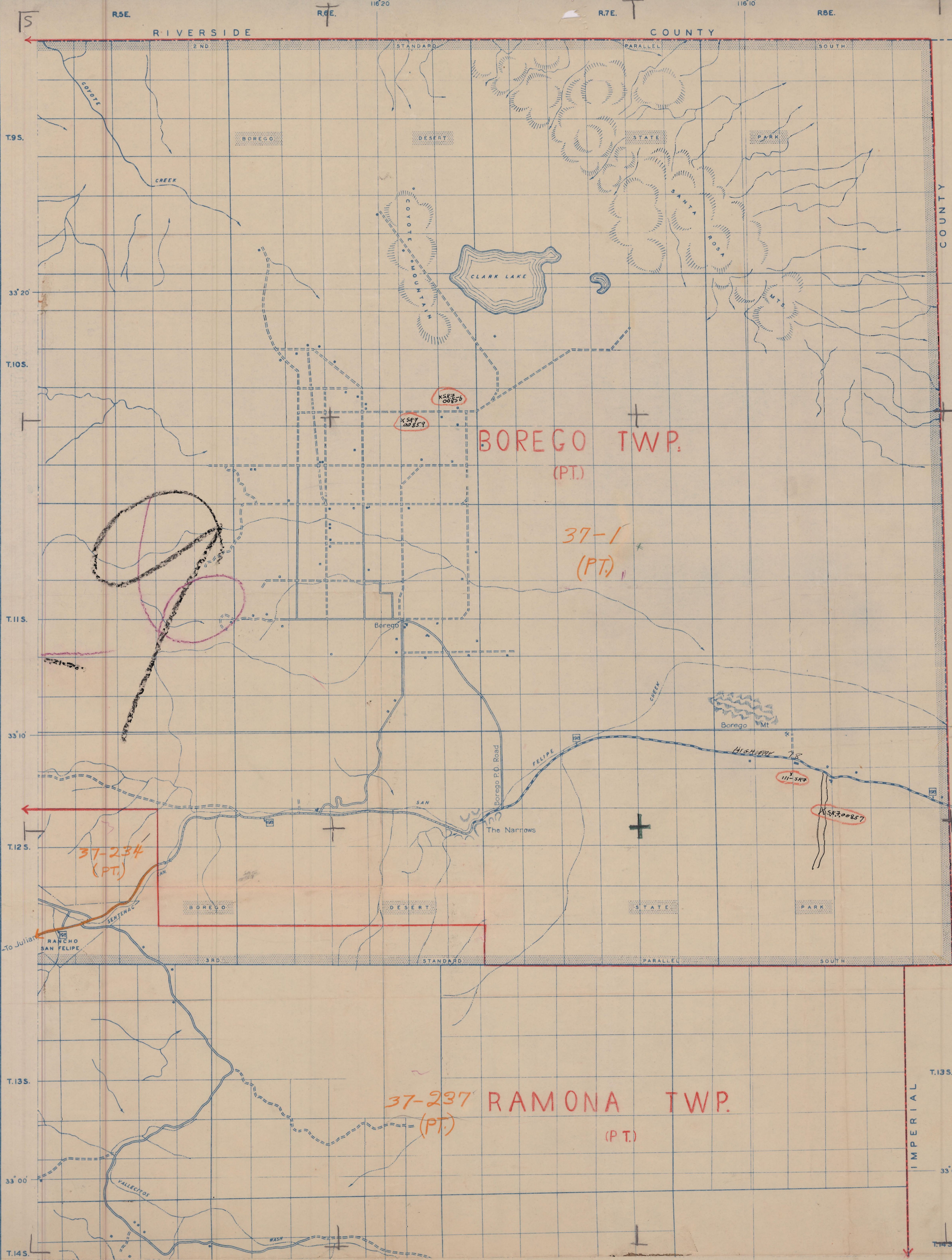


LEGEND table with symbols for roads, railroads, landmarks, and other features.

REVISIONS table with columns for description, date, and initials.

Dec. 12, 1938

POLYCONIC PROJECTION

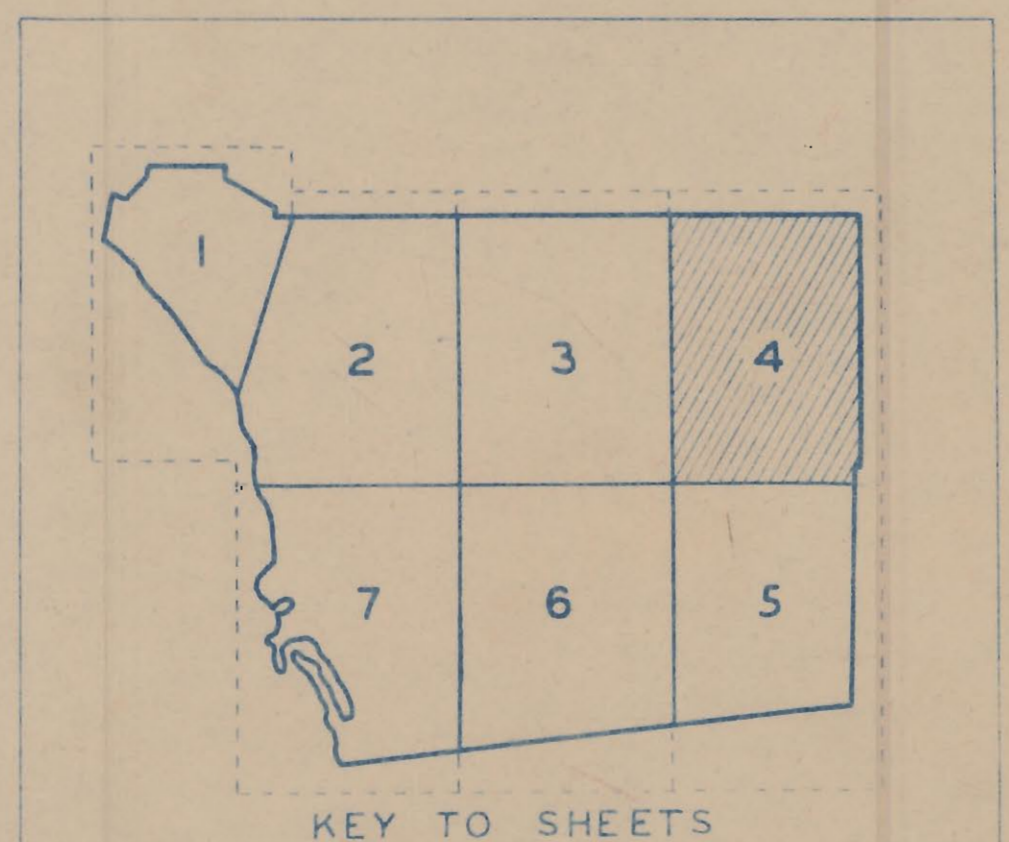


833

LEGEND

- PRIMITIVE ROADS
- UNIMPROVED ROADS
- GRADED & DRAINED RDS
- SOIL SURFACED RDS
- METAL SURFACED RDS
- BITUMINOUS ROADS
- PAVED ROADS
- AIR ROUTES
- TUNNEL
- FORD
- FERRY-FR FREE:TF-TOLL
- HIGHWAY BRIDGE
- DRAWBRIDGE
- SUSPENSION BRIDGE
- ARCH BRIDGE
- TRUSS BRIDGE
- RAILROAD & RR STATION
- ELECTRIC RAILROAD
- NARROW GAUGE R.R.
- R.R. TUNNEL
- GRADE CROSSING
- R.R. ABOVE-UNDERPASS
- R.R. BELOW-OVERPASS
- MILITARY AIRPORT
- DEPT. OF COMMERCE INTERMEDIATE FIELD
- COMMERCIAL OR MUNICIPAL FIELD
- MARKED AUXILIARY FIELD
- EMERGENCY FIELD
- U.S. HIGHWAY
- STATE HIGHWAY ROUTE
- FEDERAL AID SYSTEM
- STATE CAPITAL
- COUNTY SEAT
- CITIES OR VILLAGES
- INCORPORATED CITY
- CONGESTED AREA
- CULTURE NOT SHOWN
- STATE BOUNDARY
- COUNTY BOUNDARY
- CORPORATE LIMITS
- TOWNSHIP LINES
- SECTION LINES
- PARK OR RESERVATION B'DY
- IRRIGATION DITCH
- DRAINAGE DITCH
- CANAL
- SHIP OR BARGE LINES
- HEAD OF NAVIGATION
- DAM
- SMALL PARKS
- FAIR GROUNDS, RACE COURSES & SPEEDWAYS
- GOLF COURSE OR COUNTRY CLUB
- ATHLETIC FIELD OR AMUSEMENT PARK
- CEMETERY
- MINE OR QUARRY
- OIL OR GAS WELLS
- TANKS OR REFINERIES
- POWER PLANT
- RADIO STATION
- FIRE LOOKOUT STA.
- FOREST RANGER STA.

S.R. 7 Survey Residential Financing Field Control Road Schwabke No. 10050



37-237 ALLOCATION: Ramona Twp. of County of San Diego S.D. 1930 SCALE DATE 1930

RIVERSIDE COUNTY

FALLBROOK TWP (PT.) 37-83 (PT.)

ESCONDIDO TWP (PT.) 37-76 (PT.)

RAMONA TWP (PT.) 37-234 (PT.)

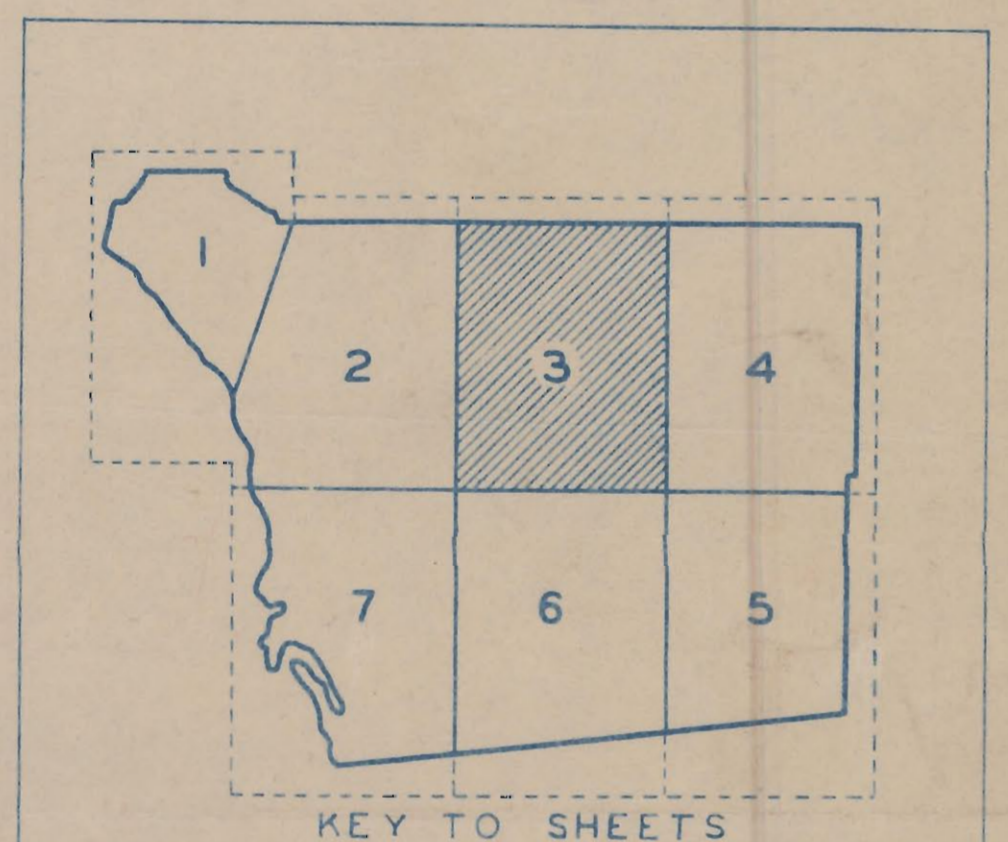
BOREGO TWP (PT.) 37-1 (PT.)

EL CAJON TWP (PT.) 37-210 (PT.)

EL CAJON TWP (PT.) 37-19 (PT.)

LEGEND

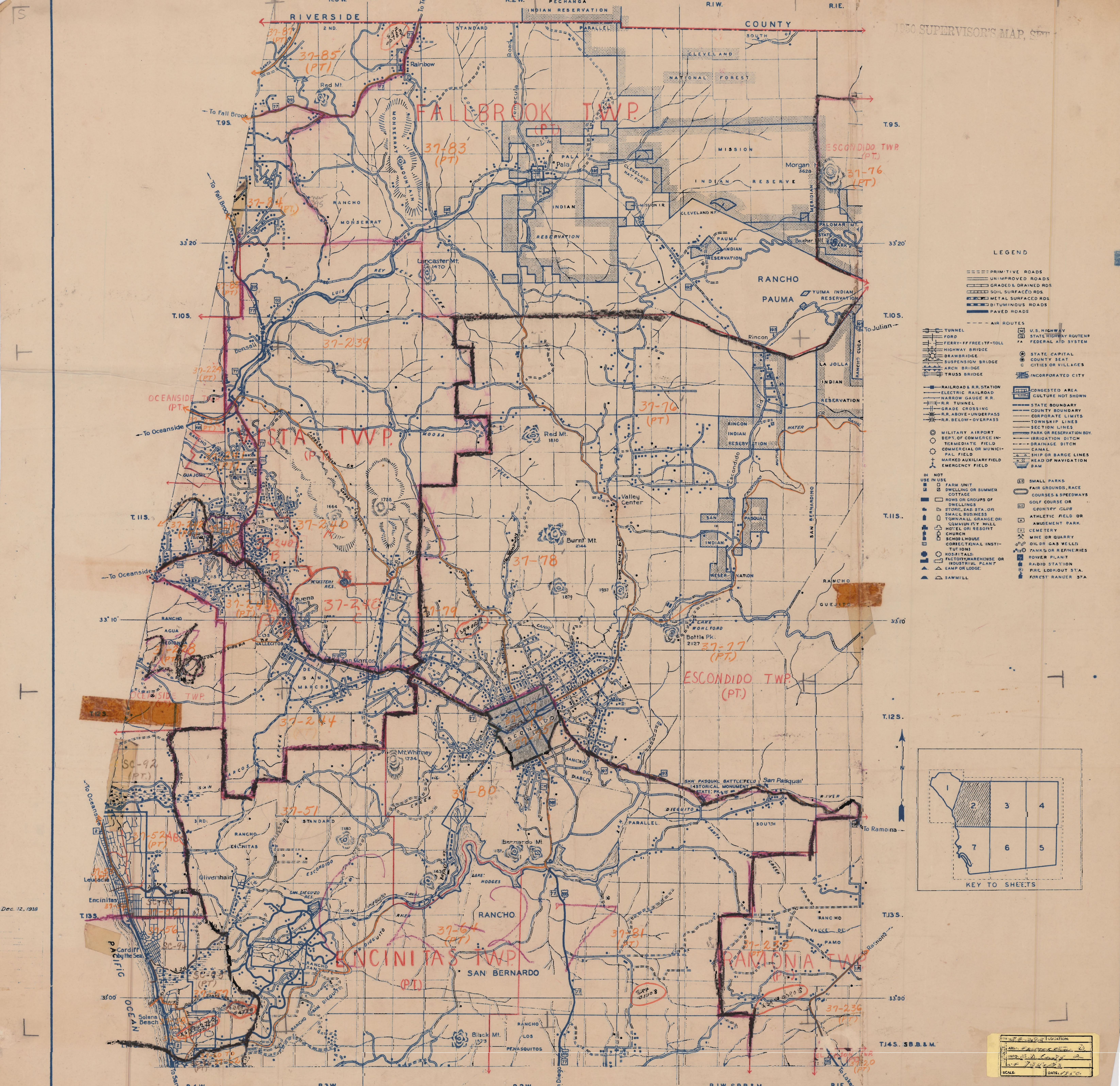
- PRIMITIVE ROADS
- UNIMPROVED ROADS
- GRADED & DRAINED RDS
- SOIL SURFACED RDS
- METAL SURFACED RDS
- BITUMINOUS ROADS
- PAVED ROADS
- AIR ROUTES
- TUNNEL
- FERRY-FREE FERRY-TOLL
- HIGHWAY BRIDGE
- DRAWBRIDGE
- SUSPENSION BRIDGE
- ARCH BRIDGE
- TRUSS BRIDGE
- RAILROAD & R.R. STATION
- ELECTRIC RAILROAD
- NARROW GAUGE R.R.
- R.R. TUNNEL
- GRADE CROSSING
- R.R. ABOVE-OVERPASS
- R.R. BELOW-OVERPASS
- MILITARY AIRPORT
- DEPT. OF COMMERCE INTERMEDIATE FIELD
- COMMERCIAL OR MUNICIPAL FIELD
- MARKED AUXILIARY FIELD
- EMERGENCY FIELD
- U.S. HIGHWAY ROUTE
- FEDERAL AID SYSTEM
- STATE CAPITAL
- COUNTY SEAT
- CITIES OR VILLAGES
- INCORPORATED CITY
- CONGESTED AREA
- CULTURE NOT SHOWN
- STATE BOUNDARY
- COUNTY BOUNDARY
- CORPORATE LIMITS
- TOWNSHIP LINES
- SECTION LINES
- PARK OR RESERVATION BDR
- IRIGATION DITCH
- DRAINAGE DITCH
- CANAL
- SHIP OR BARGE LINES
- HEAD OF NAVIGATION
- DAM
- SMALL PARKS
- FAIR GROUNDS, RACE COURSES & SPEEDWAYS
- GOLF COURSE OR COUNTRY CLUB
- ATHLETIC FIELD OR AMUSEMENT PARK
- CEMETERY
- MINE OR QUARRY
- OIL OR GAS WELLS
- TANKS OR REFINERIES
- POWER PLANT
- RADIO STATION
- FIRE LOOKOUT STA.
- FOREST RANGER STA.



REF. 6-627 LOCATION:
 AREA: ESCONDIDO
 INFO: S.D. COUNTY
 DATE: 7-3-1930
 SCALE: 1" = 1 MILE
 DATE: 1930

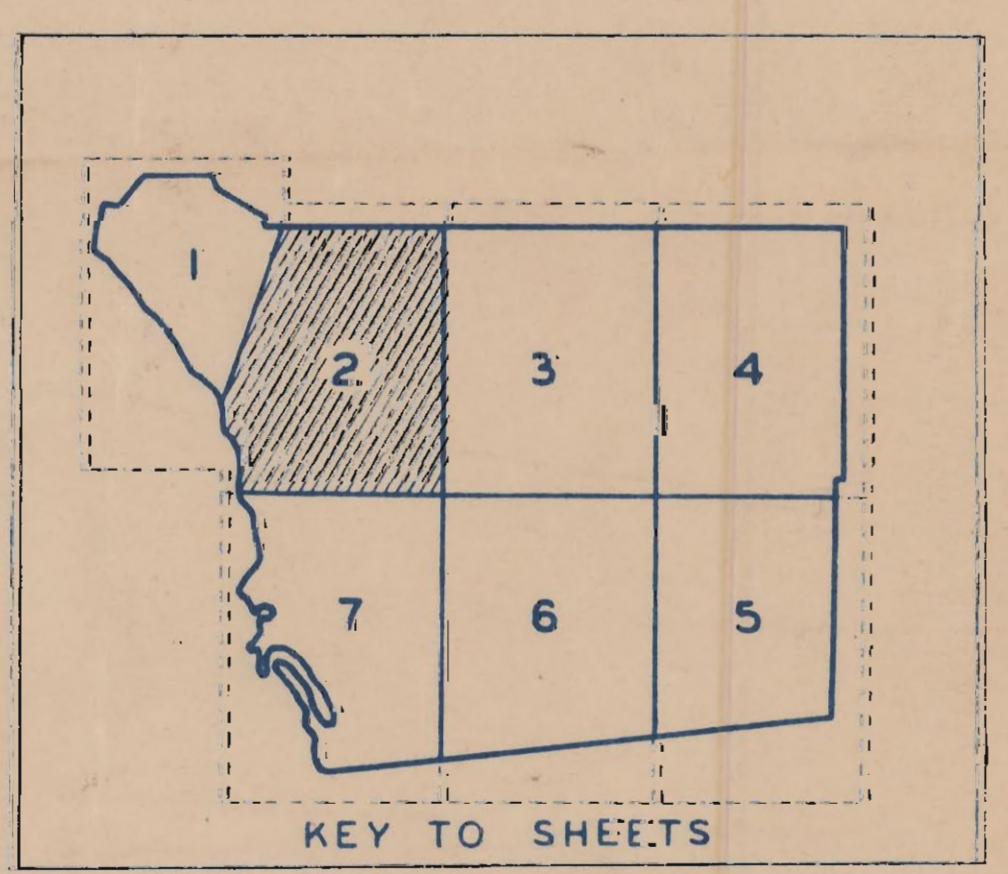
307

12, 1938



LEGEND

	PRIMITIVE ROADS		U.S. HIGHWAY
	UNIMPROVED ROADS		STATE HIGHWAY ROUTE
	GRADED & DRAINED ROADS		FEDERAL AID SYSTEM
	SOIL SURFACED ROADS		STATE CAPITAL
	METAL SURFACED ROADS		COUNTY SEAT
	BITUMINOUS ROADS		CITIES OR VILLAGES
	PAVED ROADS		INCORPORATED CITY
	AIR ROUTES		CONGESTED AREA
	TUNNEL		CULTURE NOT SHOWN
	FORD		STATE BOUNDARY
	FERRY-F.F. FREE-T.F. TOLL		COUNTY BOUNDARY
	HIGHWAY BRIDGE		CORPORATE LIMITS
	DRAWBRIDGE		SECTION LINES
	SUSPENSION BRIDGE		TOWNSHIP LINES
	ARCH BRIDGE		PARK OR RESERVATION BDY.
	TRUSS BRIDGE		IRRIGATION DITCH
	RAILROAD & R.R. STATION		DRAINAGE DITCH
	ELECTRIC RAILROAD		CANAL
	NARROW GAUGE R.R.		SHIP OR BARGE LINES
	R.R. TUNNEL		HEAD OF NAVIGATION
	GRADE CROSSING		DAM
	R.R. ABOVE-UNDERPASS		
	R.R. BELOW-OVERPASS		
	MILITARY AIRPORT		
	DEPT. OF COMMERCE INTERMEDIATE FIELD		
	COMMERCIAL OR MUNICIPAL FIELD		
	MARKED AUXILIARY FIELD		
	EMERGENCY FIELD		
	FARM UNIT		SMALL PARKS
	DWELLING OR SUMMER COTTAGE		FAIR GROUNDS, RACE COURSES & SPEEDWAYS
	ROCKS OR GROUPS OF DWELLINGS		COUNTRY CLUB
	STORE, GAS STA. OR SMALL BUSINESS		ATHLETIC FIELD OR AMUSEMENT PARK
	TOWN HALL, GRANGE, OR COMMUNITY HALL		CEMETERY
	HOTEL OR RESORT		MINE OR QUARRY
	CHURCH		OIL OR GAS WELLS
	SCHOOL HOUSE		TANKS OR REFINERIES
	CORRECTIONAL INSTITUTION		POWER PLANT
	HOSPITAL		RADIO STATION
	FACTORY, WAREHOUSE, OR INDUSTRIAL PLANT		FIRE LOOKOUT STA.
	LAMP OR LODGE		FOREST RANGER STA.
	SAWMILL		



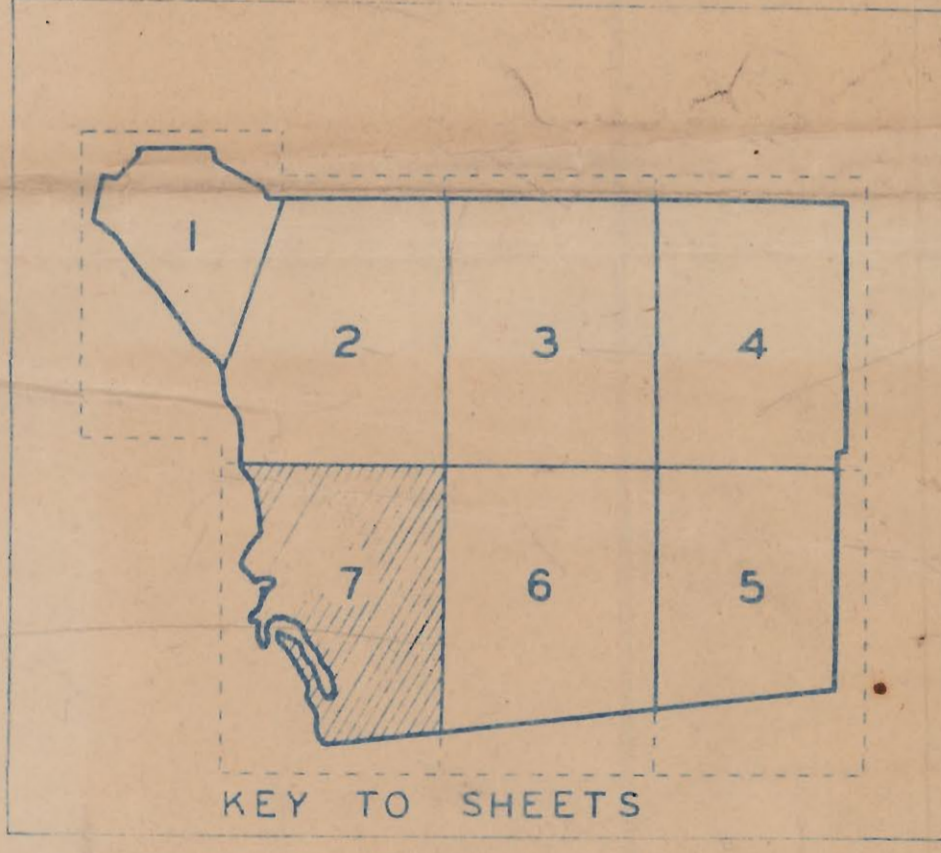
Dec. 12, 1930

LOCATION: _____
 INFO: _____
 DATE: 12/12/30

Boundary for San Diego Area Origin and Destination Survey

LEGEND

- PRIMITIVE ROADS
- UNIMPROVED ROADS
- GRADED & DRAINED RDS
- SOIL SURFACED RDS
- METAL SURFACED RDS
- BITUMINOUS ROADS
- PAVED ROADS
- AIR ROUTES
- TUNNEL
- FORD
- FERRY-FR FREE; TF-TOLL
- HIGHWAY BRIDGE
- DRAWBRIDGE
- SUSPENSION BRIDGE
- ARCH BRIDGE
- TRUSS BRIDGE
- RAILROAD & R.R. STATION
- ELECTRIC RAILROAD
- NARROW GAUGE R.R.
- R.R. TUNNEL
- GRADE CROSSING
- R.R. ABOVE-OVERPASS
- R.R. BELOW-OVERPASS
- MILITARY AIRPORT
- DEPT. OF COMMERCE INTERMEDIATE FIELD
- COMMERCIAL OR MUNICIPAL FIELD
- MARKED AUXILIARY FIELD
- EMERGENCY FIELD
- U.S. HIGHWAY ROUTE
- STATE HIGHWAY ROUTE
- FEDERAL AID SYSTEM
- STATE CAPITAL
- COUNTY SEAT
- CITIES OR VILLAGES
- INCORPORATED CITY
- CONGESTED AREA
- CULTURE NOT SHOWN
- STATE BOUNDARY
- COUNTY BOUNDARY
- CORPORATE LIMITS
- TOWNSHIP LINES
- SECTION LINES
- PARK OR RESERVATION
- IRRIGATION DITCH
- DRAINAGE DITCH
- CANAL
- SHIP OR BARGE LINES
- HEAD OF NAVIGATION
- DAM
- SMALL PARKS
- FAIR GROUNDS, RACE COURSES & SPEEDWAYS
- GOLF COURSE OR COUNTRY CLUB
- ATHLETIC FIELD OR AMUSEMENT PARK
- CEMETERY
- MINE OR QUARRY
- OIL OR GAS WELLS
- TANKS OR REFINERIES
- POWER PLANT
- RADIO STATION
- FIRE LOOKOUT STA.
- FOREST RANGER STA.



T.185. S.B.B. & M.

1950 SUPERVISOR'S MAP
 PREPARED BY
 S. D. QUAY
 OF 7 SHEETS
 SCALE: 1" = 1 MILE
 DATE: 1950

Dec 12, 1938

POLYCONIC PROJECTION