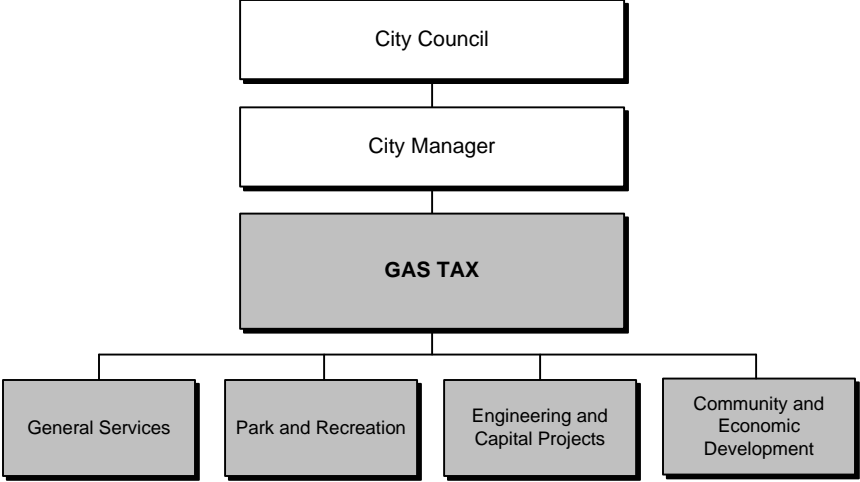


# GAS TAX







## Mission Statement

To fund energy and maintenance of street lighting, traffic signals, traffic signs and markings, including the City's share of Gaslamp Quarter Lighting and San Diego Street Lighting District Number One; to continue researching ways to reduce energy costs; to provide maintenance of City streets; and to provide maintenance of median landscape, tree trimming and waste removal in the street rights-of-way.

## Department Description

The Gas Tax Fund is the result of a combination of laws that tax the use of gasoline. The current total tax on fuel is \$0.18 per gallon. The City of San Diego's share of Gas Tax revenue is based on a formula consisting of vehicle registration, assessed valuation and population. The funding generated is used to perform Citywide repairs and restoration to existing roadways, reduce congestion, improve safety and provide for the construction of needed facilities within the public rights-of-way.

The Gas Tax Fund is also responsible for funding energy related costs and maintenance of street lighting, traffic signals, traffic signs and markings, including the City's share of Gaslamp Quarter Lighting and San Diego Street Lighting District Number One; to continue researching ways to reduce energy costs; to provide maintenance of City streets; and to provide maintenance of median landscape, tree trimming and waste removal in the street rights-of-way.

The Auditor and Comptroller's Office, Engineering and Capital Projects Department and the Financial Management Department are reimbursed for costs related to administrative oversight of the fund and for Project Financial Reporting. The Park and Recreation Department provides landscape maintenance for select center medians and rights-of-way. The General Services Department is reimbursed for street maintenance services. The Engineering and Capital Projects Department is also reimbursed for traffic engineering.

# Gas Tax

Gas Tax				
	FY 2004 BUDGET	FY 2005 BUDGET	FY 2006 FINAL	FY 2005-2006 CHANGE
Positions	0.00	0.00	<b>0.00</b>	0.00
Personnel Expense	\$ -	\$ -	\$ -	\$ -
Non-Personnel Expense	\$ 23,504,180	\$ 23,791,501	\$ <b>23,877,748</b>	\$ 86,247
<b>TOTAL</b>	\$ 23,504,180	\$ 23,791,501	\$ <b>23,877,748</b>	\$ 86,247

## Department Expenditures

	FY 2004 BUDGET	FY 2005 BUDGET	FY 2006 FINAL
<b>GAS TAX</b>			
<b>Gas Tax</b>			
Auditor & Comptroller	\$ 77,715	\$ 106,312	\$ <b>110,564</b>
Community & Economic Development	\$ -	\$ 26,103	\$ <b>36,519</b>
E&CP - Traffic Engineering	\$ -	\$ 2,944,715	\$ <b>2,944,715</b>
Engineering & Capital Projects	\$ 18,162	\$ 18,798	\$ <b>18,798</b>
Financial Management	\$ 101,839	\$ 105,510	\$ <b>109,729</b>
General Services	\$ 19,548,124	\$ 18,994,953	\$ <b>18,338,562</b>
Park & Recreation	\$ 913,205	\$ 1,595,110	\$ <b>2,318,861</b>
Traffic Engineering	\$ 2,845,135	\$ -	\$ -
<b>Total</b>	\$ <b>23,504,180</b>	\$ <b>23,791,501</b>	\$ <b>23,877,748</b>

## Significant Budget Adjustments

### GAS TAX

Gas Tax	Positions	Cost
<b>Support for Park and Recreation Department - Maintenance Assessment Districts</b>	0.00	\$ 627,839
Increase to reimburse the Park and Recreation Department for landscape maintenance of select center medians and rights-of-way.		
<b>Support for Park and Recreation Department</b>	0.00	\$ 95,912
Increase to reimburse the Park and Recreation Department for street median maintenance of select center medians and rights-of-way.		
<b>Support for Community and Economic Development Department - Maintenance Assessment Districts</b>	0.00	\$ 10,416
Increase to reimburse the Community and Economic Development Department for landscape maintenance of select center medians and rights-of-way.		

## Significant Budget Adjustments

### GAS TAX

Gas Tax	Positions	Cost
<b>Support for Administration</b>	0.00	\$ 8,471
Increase to reimburse the City Auditor and Comptroller and the Financial Management Department for administrative oversight of the Gas Tax Fund.		
<b>Support for General Services Department</b>	0.00	\$ (656,391)
Reduction of Gas Tax funding to the General Services Department/Street Division for street maintenance services.		

## Expenditures by Category

	FY 2004 BUDGET	FY 2005 BUDGET	FY 2006 FINAL
<b>NON-PERSONNEL</b>			
Supplies & Services	\$ 23,504,180	\$ 23,791,501	\$ <b>23,877,748</b>
<b>SUBTOTAL NON-PERSONNEL</b>	\$ 23,504,180	\$ 23,791,501	\$ <b>23,877,748</b>
<b>TOTAL</b>	\$ 23,504,180	\$ 23,791,501	\$ <b>23,877,748</b>

## Non-General Fund Five-Year Expenditure Forecast

	FY 2006 FINAL	FY 2007 FORECAST	FY 2008 FORECAST	FY 2009 FORECAST	FY 2010 FORECAST	FY 2011 FORECAST
Positions	0.00	0.00	0.00	0.00	0.00	0.00
Personnel Expense	\$ -	\$ -	\$ -	\$ -	\$ -	\$ -
Non-Personnel Expense	\$ <b>23,877,748</b>	\$ 24,594,080	\$ 25,331,902	\$ 26,091,859	\$ 26,874,615	\$ 27,680,853
<b>TOTAL EXPENDITURES</b>	\$ <b>23,877,748</b>	\$ 24,594,080	\$ 25,331,902	\$ 26,091,859	\$ 26,874,615	\$ 27,680,853

### Gas Tax

#### Fiscal Years 2007-2011

No major projected requirements.

# Gas Tax

## Revenue and Expense Statement

GAS TAX FUND 30219

	FY 2004* BUDGET	FY 2005* BUDGET	FY 2006* FINAL
<b>REVENUE</b>			
Gas Tax Revenue	\$ 23,075,619	\$ 23,532,052	\$ <b>23,538,467</b>
Interest Earnings	\$ 342,142	\$ 250,000	\$ <b>250,000</b>
Miscellaneous Revenue	\$ 86,419	\$ 86,714	\$ <b>89,281</b>
<b>TOTAL REVENUE</b>	\$ 23,504,180	\$ 23,868,766	\$ <b>23,877,748</b>
<b>TOTAL BALANCE AND REVENUE</b>	\$ 23,504,180	\$ 23,868,766	\$ <b>23,877,748</b>
<b>OPERATING EXPENSE</b>			
Administration - Auditor and Comptroller	\$ 77,715	\$ 106,312	\$ <b>110,564</b>
Administration - Engineering and Capital Projects	\$ 18,162	\$ 18,798	\$ <b>18,798</b>
Administration - Financial Management	\$ 101,839	\$ 105,510	\$ <b>109,729</b>
Community & Economic Development - MADs	\$ -	\$ 26,103	\$ <b>36,519</b>
E&CP - Transportation Engineering/Operations	\$ -	\$ 2,944,715	\$ <b>2,944,715</b>
General Services - Street Division	\$ 19,548,124	\$ 18,994,953	\$ <b>18,338,562</b>
Park and Recreation	\$ 913,205	\$ 1,595,110	\$ <b>2,318,861</b>
Transportation - Traffic Engineering	\$ 2,845,135	\$ -	\$ <b>-</b>
<b>TOTAL OPERATING EXPENSE</b>	\$ 23,504,180	\$ 23,791,501	\$ <b>23,877,748</b>
<b>TOTAL EXPENSE</b>	\$ 23,504,180	\$ 23,791,501	\$ <b>23,877,748</b>
<b>BALANCE</b>	\$ -	\$ 77,265	\$ <b>-</b>
<b>TOTAL EXPENSE, RESERVE AND BALANCE</b>	\$ 23,504,180	\$ 23,868,766	\$ <b>23,877,748</b>

\* At the time of publication audited financial statements for Fiscal Year 2004 were not available. Therefore, the Fiscal Years 2004 and 2005 columns reflect final budget amounts from the Fiscal Year 2004 and 2005 Annual Budgets. As such, balances and reserves do not reflect carryover from the previous fiscal year.