

ASSER SODIUM STREET LIGHT W/ SKY SHIELDS

STA 19+55
END TYPE 60 CONCRETE BARRIER
CONNECT TO CRASH CUSHION
PER CALTRANS STD A78E3
BEGIN CRASH CUSHION
PER CALTRANS STD A78E3

STA 20+15
END CRASH CUSHION

CONSTRUCT CRASH CUSHION PER
CALTRANS STD A78E3

INSTALL NEW MEDIAN CUR
PER SDRSD G-1.

FLORIDA DRIVE

EX STRIPING

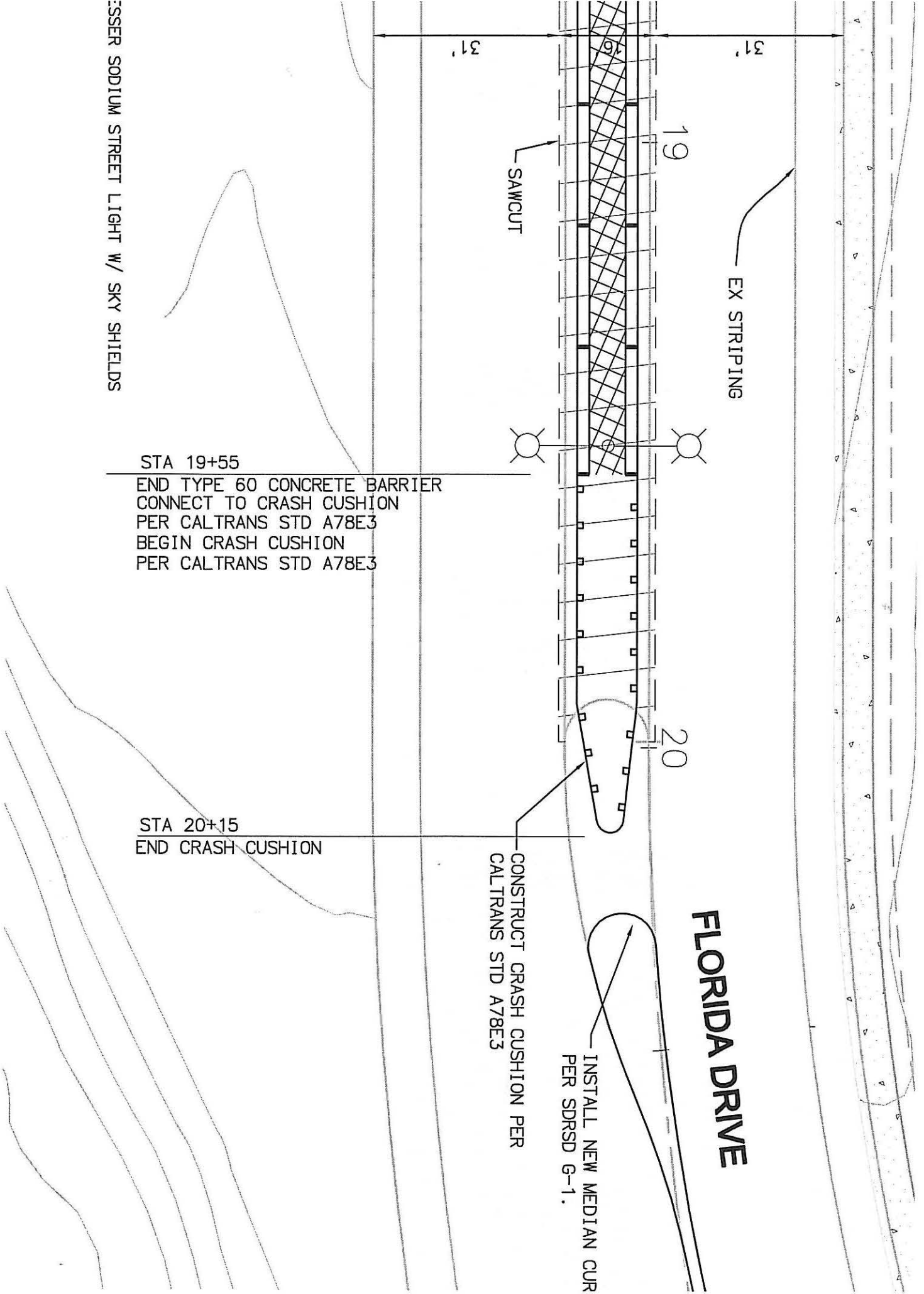
SAWCUT

19

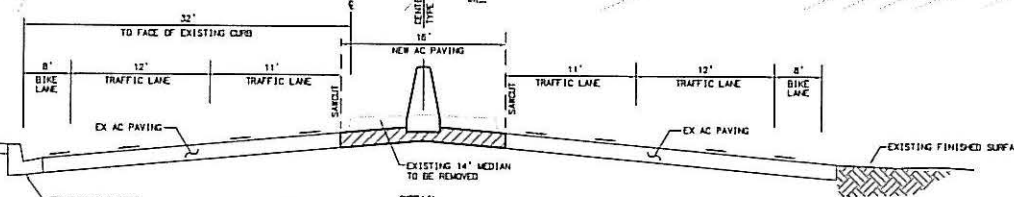
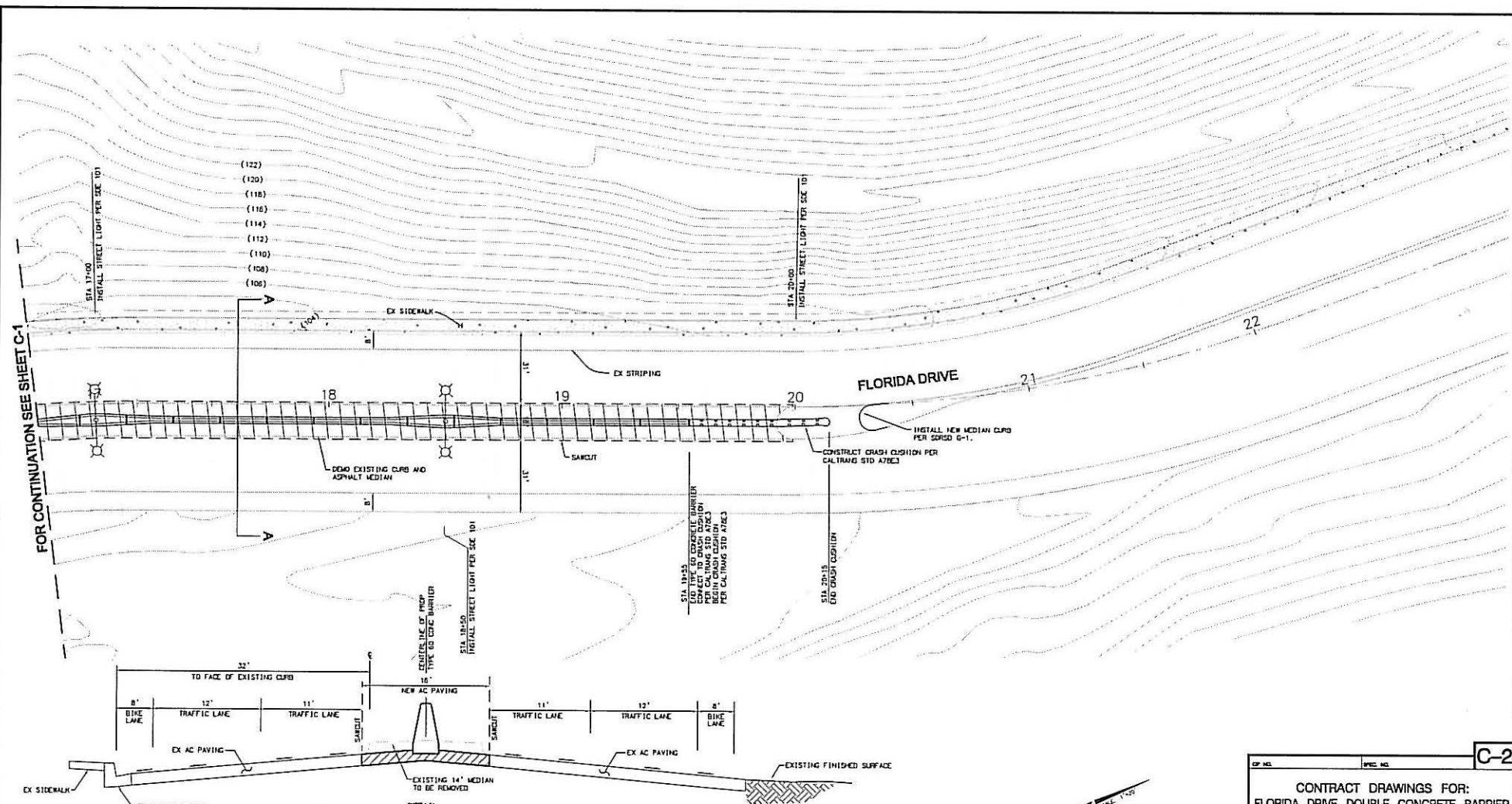
20

31'

31'



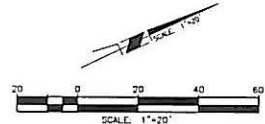
H:\DATA\315101\315101\ALTERNATIVE-B-C-CONCRETE BARRIER-SINGLE CONC BARRIER & CENTER LIGHTS\315101-IP-FLORIDA-DRIVE-DWG -P-04.dwg 12/8/2009 2:12 PM



FOR CONTINUATION SEE SHEET C-1

C-2

NOTE:
 STATIONING SHOWN ON PLANS FOR REFERENCE ONLY.
 STATIONING SHOWN AS PER APPROVED CITY PLAN 34140 DATED JULY 7, 2006



CP NO.	SPEC NO.	
CONTRACT DRAWINGS FOR: FLORIDA DRIVE DOUBLE CONCRETE BARRIER IMPROVEMENT PLAN		
CITY OF SAN DIEGO, CALIFORNIA SHEET 4 OF XX SHEETS		ROLL P.L.S. 00000
DESIGNED BY	DATE	APPROVED BY
DRAWN BY	APPROVED DATE	APPROVED ENGINEER
CHECKED BY		ASSISTANT ENGINEER
IN CHARGE		CHECKED CERTIFICATE
		000-0000
		LANDMARK ENGINEERS
CONTRACTOR	DATE STARTED	DATE COMPLETED
INSPECTOR		

DRAWING STATUS				
NO.	DATE	REVISION DESCRIPTION	CHKD.	APP'D.

RBF CONSULTING
 REGISTERED PROFESSIONAL ENGINEERS
 1000 LA JOLLA VILLAGE CENTER, SUITE 100
 LA JOLLA, CALIFORNIA 92037
 (619) 451-1111



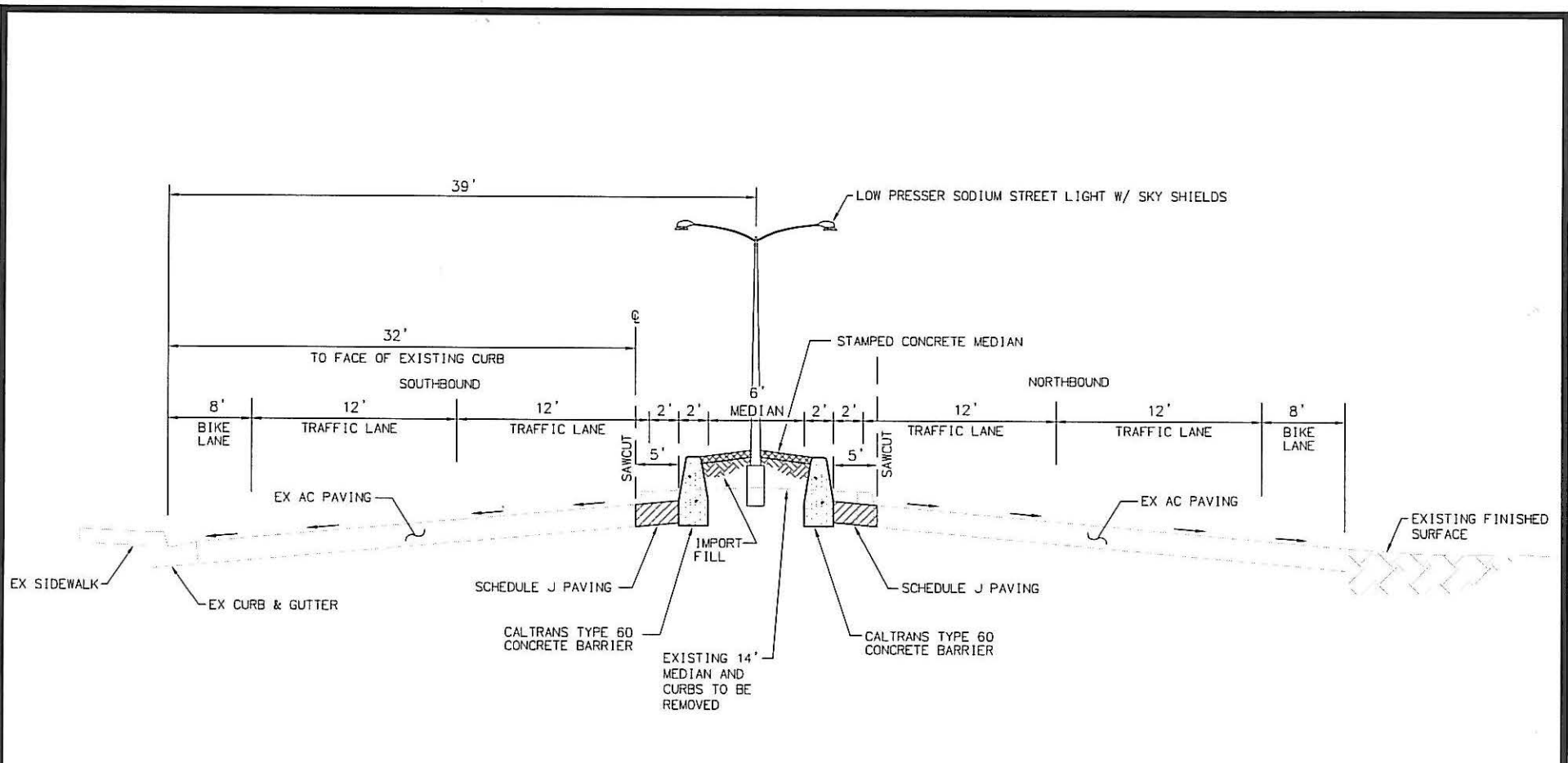
ENGINEER OF WORK
 ROBERT A. KERPPÉ
 REG. NO. 45717
 DATE

ENGINEERING & CAPITAL IMPROVEMENT PROJECTS
 City of San Diego

SCALE	0 1/2 1
DATE	
BY	
CHECKED	
IN CHARGE	




XX-D



**FLORIDA DRIVE
STAMPED CONCRETE MEDIAN
TYPICAL ROAD SECTION**

NOT TO SCALE

OCTOBER 6, 2009


RBF
 CONSULTING

PLANNING ■ DESIGN ■ CONSTRUCTION
 9755 CLAREMONT MESA BOULEVARD, SUITE 100
 SAN DIEGO, CALIFORNIA 92124-1024
 658.614.5000 • FAX 658.614.5001 • www.RBF.com

H:\PDATA\251034\36\CADD\LAND\FLORIDA DRIVE\EXHIBITS\DOUBLE BARRIER OPTION-1.DWG MAF 10/7/2009 4:05 PM

CITY of SAN DIEGO
MEMORANDUM

FA 046 A 18

DATE: December 1, 2008
TO: Mary Cornicelli, Captain, Traffic Division
FROM: Jeff Fellows, Detective Sergeant, Traffic Division
SUBJECT: Fatal Traffic Collision

TRAFFIC DEATH NO: 049 **NO. OF TRAFFIC DEATHS THIS TIME LAST YEAR: 55**

AUTOMOBILE NO: 18 **TOTAL NUMBER OF TRAFFIC DEATHS FOR 2007: 57**

DATE/TIME OCCURRED: November 29, 2008 @ 0001 hours **DAY:** Saturday

LOCATION: 1800 Florida Street **BEAT:** 531

PARTY ONE: CUEVA, Claudia (22-F)
(Deceased) 2461 Imperial Avenue
 San Diego, CA 92102
 Vehicle: 2001 Chrysler Sebring, Gold
 CA. License: 4VMG730 License Status: Valid
 (Safety device in use – Impairment not known)

PARTY TWO: MEJIA, Prisma (15-F)
(Deceased) 3087 J Street
 San Diego, CA 92102

ACTIONS: Claudia CUEVA was driving S/B on Florida Street at a high rate of speed. She had seven passengers, six teenagers and a 3 year-old. CUEVA was apparently the only one in a seatbelt. The vehicle was designed for five total occupants. CUEVA drove over the raised center island, the oncoming lanes and the raised curb. The vehicle went up an embankment and rolled several times ejecting all the passengers. CUEVA and Prisma MEJIA were pronounced dead at the scene. The six other passengers were transported to four local hospitals for treatment. Prisma MEJIA'S brother, Raymundo (14-M) had both legs amputated as a result of his injuries.

Detective Heidi Hawley is conducting the follow-up investigation.

Jeff Fellows, Detective Sergeant
Traffic Investigations Unit

Disposition: SR DA CA UNF File DATE: _____
Original case forwarded to Records Division on _____