



The City of San Diego
 Balboa Park Administration Building
 2125 Park Blvd.
 San Diego, CA 92101
 Phone number: (619) 235-1100
www.sandiego.gov



“ We enrich lives through quality parks and programs ”

FOR YOUR INFORMATION

SERRA MUSEUM

The Serra Museum has been managed by the San Diego Historical Society since opening its doors in 1929.

For general information about the Serra Museum and programs, please call **(619) 297-3258**.

To arrange private functions at the Serra Museum

or loggia please call the Site Rental Coordinator at 619-232-6203 extension 109. Website: www.sandiegohistory.org

THE INFORMATION PROVIDED IN THIS BROCHURE IS AVAILABLE IN ALTERNATIVE FORMATS UPON REQUEST. YOU MAY CALL (619) 235-5935. PRINTED ON RECYCLED PAPER.



2727 Presidio Drive

Open to the public:

Mon. - Fri: 11am-3pm

Sat. & Sun:

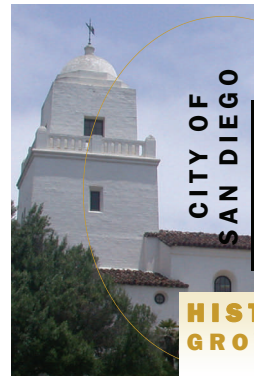
10am-4:30pm

EVENTS

If you are interested in having a special event or an outdoor wedding at Presidio Park, please call the **Permit Center** at **(619) 235-1169**.

You can also visit the following website to view availability and options:

www.sandiego.gov/park-and-recreation/general-info/bestsites.shtml



CITY OF SAN DIEGO

VOLUME 2, ISSUE 4

PRESIDIO PARK RANGER REPORT

QUARTERLY: APRIL-JUNE SPRING 2007

HISTORICAL HIGHLIGHT: WHY IS THAT GROWING THERE? WHAT WAS THE PLAN— AN HISTORICAL PERSPECTIVE

INSIDE THIS ISSUE:

FEATURED ANIMAL 2

FEATURED PLANT 2

VOLUNTEERING 3

HELPFUL HINTS 3

CONTACT INFORMATION 4

FYI'S 4

When you look closely at the landscape here in Presidio Park, you will soon notice some unique aspects to this spectacular park. Of course, the topography and the undulating hills are interesting. And the fact that this park is an island among the urban expansion, which can be seen just beyond the grass and trees, qualifies as unique. And let's not forget the spectacular views from various parts of Presidio Park.

But have you also noticed the diversity of plant life and the way they have been presented? It is not accidental. Walking among the trails can be an exciting botanical experience. Presidio Park was designed to mix the native with the non-native plant species in a grand experiment meant to showcase *how humans can cooperate with nature to create a landscape meant to beautify what already existed*.

Presidio Park is the realized dream of George Marston who, early in the 20th Century, was instrumental in making San Diego what it is today. Mr. Marston entrusted several crucial developmental elements here in Presidio Park to key contemporaries. One

was William Templeton Johnson, who not only designed several of Balboa Park's buildings, but also designed the Serra Museum. Another important player in Presidio Park's development was Landscape Architect John Nolen. He was entrusted with the design and plantings of the Park. He came to San Diego in 1908 and proposed a grand plan for the City, but the plan was met with resistance and subsequently never officially adopted. However, years later his ideas were incorporated. Here in Presidio, his influence can still be seen.

His plan combined native plants with non-native plants brought in from around the world. Today you can see a Pepper tree from Brazil and a Senegalese Date Palm right next to the native Lemonade Berry tree. Many more interesting combinations exist in Presidio Park.

Have you seen them all?

“...the builders of Presidio Park have sought to preserve its inherent form and to enhance this physical character with deeper meaning and significance...”

George Marston

SPECIAL POINTS OF INTEREST:

(look for answers inside)

Where are they?

Palm Canyon

The “Eucalyptus Grove”



PRESIDIO RANGER-LED TOURS

Join a Park Ranger every **second** Sunday of the month for a free hour long tour of Presidio Park. The Ranger will discuss the history of Presidio Park and its relevance to the area, horticulture, archeology and

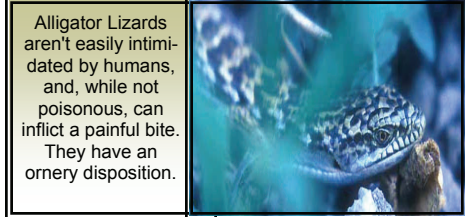
more. Please meet outside the entrance of the Serra Museum at 1pm. If you have any questions or would like to inquire about special group tours, please call the Park Rangers at (619) 235-5935.

FEATURED ANIMAL: ALLIGATOR LIZARD

Watch your step! If the day is cool or night is approaching, you may find a large Alligator Lizard sunning itself in your path.

These *Elgaria multicarinata*'s or Alligator Lizards are one of only 3 species here in California. The *Elgaria webbia* is the primary Alligator Lizard species here in Presidio Park and is thought to be the only species native to San Diego. However, there are several subspecies, which may manifest itself as variations in color.

These brave critters are mostly unafraid of humans, which is why the unaware hiker can come upon one of these and scarcely notice until in a flash it scurries away just before a shoe comes down upon it.



Alligator Lizards aren't easily intimidated by humans, and, while not poisonous, can inflict a painful bite. They have an ornery disposition.

These lizards are large, reaching lengths of up to 21 inches. And when they run, it is with a quick slithering motion causing them to be occasionally mistaken as snakes.

Their diet consists of small insects, but occasionally can include young birds and small eggs.

Last but not least, this time of year is mating season for the *Elgaria multicarinata*; they will be seen more readily. So keep your eyes open and watch your step!

FEATURED PLANT: FURCRAEA SELLOA MARGINATA

Located at the corner of Jackson St. and Mason St., on the south side of the park, you will find a unique and magnificent specimen of



Furcraea selloa marginata
(Presidio Park)

furcraea. These relatives of the Agave share attributes of both the agave and the yucca. The *Furcraea selloa marginata*, however, is one of only a small number of known Furcraea. Interestingly, there are no known wild populations of the type *selloa marginata*, even though they have been long

cultivated. Traditionally it is believed that their native habitat extends from central Mexico to Bolivia, including some Caribbean islands.

This particular plant is at the end of its blooming cycle. These plants can wait years (up to 50) for the right conditions allowing them to send a tall shoot straight up and then produce flowers, which in turn generate new generations of Furcraea as the adult plant dies. This particular plant was planted about 10 years ago. When it was planted, it was quite small, but began to grow quickly early last winter. Its size has more than doubled in 6 months.

And why...all in antcipa-

tion and preparation for the one-time blooming.

These plants produce a mast and then they flower; all over the course of several months (*see photo; below*). These flowers are typically pollinated at night by insects, bats or certain types of moths.

Take a moment to locate this special plant before it's gone.



VOLUNTEERS

The Park Rangers at Presidio Park are looking for **volunteer groups** to fulfill ongoing projects in the park:



EAGLE PROJECTS

We encourage and support Eagle Scout Projects. Their hard work benefits everyone!

CURRENT VOLUNTEERS

Stein Education Center:

This volunteer group provides litter abatement 4 times a week throughout the park and their help is greatly appreciated.

Presidio Plant ID. Project:

Members of the *Mission Hills Garden Club* and members of the *Master Gardeners* have diligently been gathering horticultural information for the Presidio Plant Identification project. The outcome will be magnificent and we sincerely thank them for their help.



HOW TO VOLUNTEER

Please call the Park Rangers Office at:
(619) 235-5935

SPECIAL POINTS OF INTEREST:(answers)

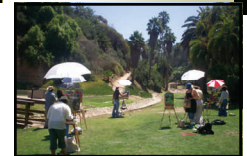
Where are they?

Palm Canyon:

Located in the Eastern part of the park with parking access from Taylor St or a short walk from Cosoy Way. Its name comes from the many variety of palms you will see here. Access to Inspiration Pt. and the Deer Memorial can also be made from here.

The "Euc. grove":

Located just behind and South of the Serra Museum with sweeping views from the Pacific Ocean to the mountains. Many varieties of Eucalyptus grow here.



Artists capturing Presidio Park's beauty.

HELPFUL HINTS

PLEASE BE ADVISED

- Smoking is not permitted.
- Please keep your park clean.
- Do not stake anything into the ground. No metal detectors.
- Please do not feed the wildlife or chase them (i.e. Squirrels).
- Camping in the park is not allowed.
- **Please stay on designated trails.** People and pets are prohibited off trail. Staying on the trail preserves the park.
- Jump-for-Joys are not permitted.
- **Dogs must be on leash at all times.**

