



REPORT

THE CITY OF SAN DIEGO TO THE PARK AND RECREATION BOARD

DATE ISSUED:

REPORT NO: 101

ATTENTION: Park and Recreation Board
Agenda of October 21, 2010

SUBJECT: Ellen Browning Scripps Memorial Park General Development Plan Update

SUMMARY

Issue – Should the Park and Recreation Board recommend approval of the Ellen Browning Scripps Memorial Park General Development Plan Update?

Director's Recommendation – Recommend approval of the proposed Ellen Browning Scripps Memorial Park General Development Plan Update.

Other Recommendations – The following groups have reviewed, considered and approved the proposed GDP.

La Jolla Town Council – June 2010
La Jolla Parks and Beaches – July 2010
Community Planning Association – November 2009
La Jolla Park & Recreation, Inc. – November 2009
Promote La Jolla – October 2009
Facilities Access Review Subcommittee – City of San Diego

Fiscal Impact – None. This plan update is not a project.

Water and Energy Conservation Status – The proposed General Development Plan Update will comply with all water and energy conservation guidelines contained in Council Policy 200-14.

Environmental – This activity is categorically exempt from CEQA pursuant to State CEQA Guidelines Sections 15301 and 15303.

BACKGROUND

Ellen Browning Scripps Memorial Park is one of the acknowledged jewels in the City's park system. The 5.6 acre park is bounded by the Pacific Ocean and La Jolla Cove to the north and east, and Coast Boulevard to the south and west. The park is primarily an open spaced landscaped environment heavily used by local residents and visitors from around the world. Beyond this, the park also includes the spectacular dynamic interface to the offshore waters and La Jolla Cove which are a recreational, environmental and ecological resource of worldwide importance.

Increasingly, the park is subject to the impact of heavy use. In 1989 a Preliminary Coastal Plan was created by the La Jolla Town Council and has been used by local community groups to guide local development. Although the plan made specific recommendations pertinent to the coastline around the Park, it concluded that the park itself merited more detailed analysis. No further action was taken in this regard until 2001 when the Scripps Park Project (SPP), a group of interested local citizens, adopted as its mission to **“develop and implement a long-term comprehensive plan to preserve, restore, and enhance Ellen Browning Scripps Memorial Park, incorporating extensive community involvement.”** Activities in support of this goal included extensive research related to history, development and usage, fundraising, workshops, public meetings and an inclusive process that has resulted in the proposed Scripps Park Plan that has been endorsed by all the groups listed above.

DISCUSSION

The Scripps Park Plan is a 33 page document detailing goals and objectives for the park as well as a comprehensive strategy for implementation. It contains detailed guidelines which serve as strategic policies as well as specific short, medium and long range actions for their implementation. The proposed General Development Plan is an integral part of the Scripps Park Plan because it incorporates its policies into a Park and Recreation Department document and updates the existing GDP which hasn't been updated since 1989.

Comparison of the new GDP with the existing 1989 GDP shows very little change in the overall layout of the park. The update incorporates the previous removal of the shuffleboard courts and provides for a realignment of the comfort station to open up the view corridors to the cove area from the interior of the park. Some limited re-contouring of the turf area will decrease stormwater runoff over the sensitive bluffs and reduce erosion. The proposed GDP also realigns the bluff top walkway back from the edge of the bluff that has retreated due to surface erosion and will incorporate more sensitive native landscaping, irrigation improvements and up to date stormwater runoff controls.

Page 3
Ellen Browning Scripps Memorial Park
General Development Plan Update
October 15, 2010

ALTERNATIVES

1. Recommend approval of the revised GDP for Ellen Browning Scripps Memorial Park with additional conditions.
2. Do not recommend approval of the revised GDP for Ellen Browning Scripps Memorial Park.

Respectfully submitted,

Kathleen Hasenauer
Deputy Director,
Developed Regional Parks Division

Prepared by:
Paul Jacob, Associate Civil Engineer
Asset Management

(PJJ)

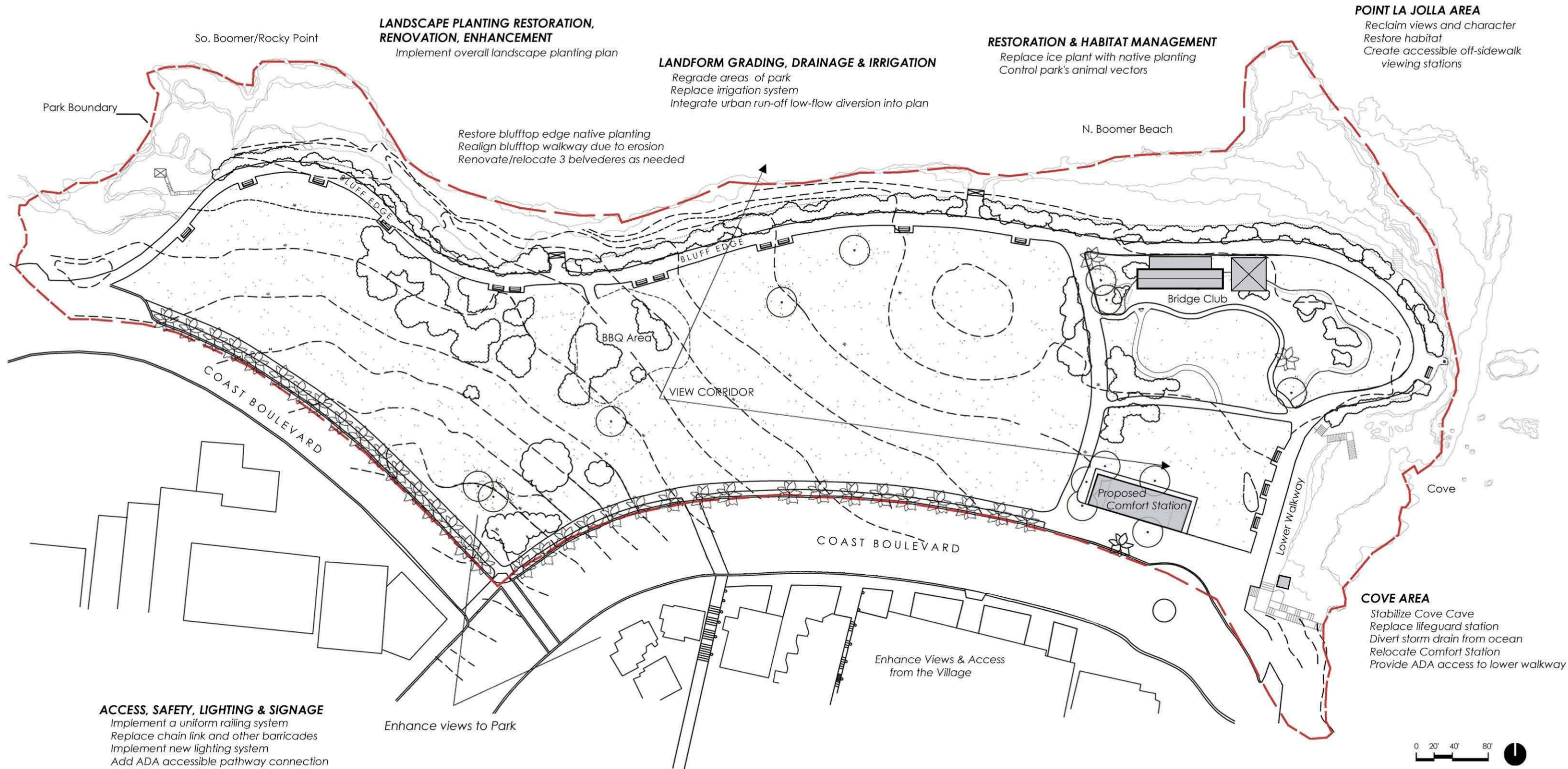
Attachments: Existing General Development Plan (1989)
Proposed General Development Plan Update

cc: Council District 1 Office

SCRIPPS PARK PLAN

Develop Park as a Work of Art; restore and improve views and enhance public access
 Preserve, protect and enhance natural landscapes and ecology
 Ensure compatible future design with natural environment, historical landscape and institute sustainable design practices
 Secure funding to implement Plan

"...an environmental and ecological resource of worldwide significance."



LANDSCAPE PLANTING RESTORATION, RENOVATION, ENHANCEMENT
 Implement overall landscape planting plan
 Restore blufftop edge native planting
 Realign blufftop walkway due to erosion
 Renovate/relocate 3 belvederes as needed

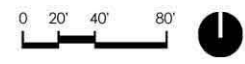
LANDFORM GRADING, DRAINAGE & IRRIGATION
 Regrade areas of park
 Replace irrigation system
 Integrate urban run-off low-flow diversion into plan

RESTORATION & HABITAT MANAGEMENT
 Replace ice plant with native planting
 Control park's animal vectors

POINT LA JOLLA AREA
 Reclaim views and character
 Restore habitat
 Create accessible off-sidewalk viewing stations

ACCESS, SAFETY, LIGHTING & SIGNAGE
 Implement a uniform railing system
 Replace chain link and other barricades
 Implement new lighting system
 Add ADA accessible pathway connection
 Add ADA-compliant companion seating
 Relocate/redesign signage

COVE AREA
 Stabilize Cove Cave
 Replace lifeguard station
 Divert storm drain from ocean
 Relocate Comfort Station
 Provide ADA access to lower walkway

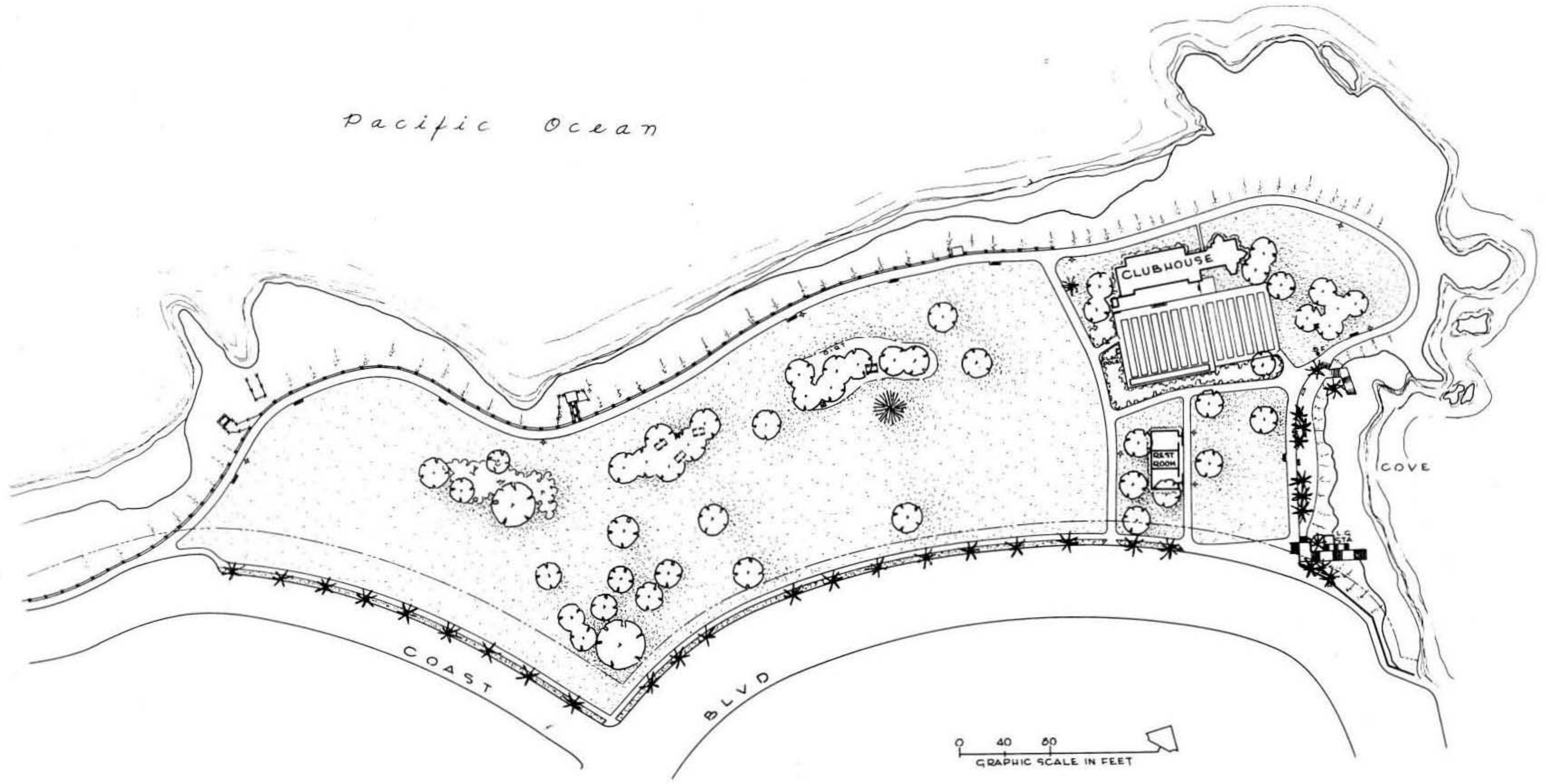


**ELLEN BROWNING SCRIPPS MEMORIAL PARK
 General Development Plan**

Campbell & Campbell
 Architects • Landscape Architects • Planners
 1425 Fifth St. • Santa Monica, California 90401

Refer to Scripps Park Plan for Design Guidelines

Pacific Ocean



COUNCIL DISTR. 1 COMM. PLAN. AREA - LA JOLLA 10 P.S.D. 500

DATA LOG FOR:

DATE	ACTION	REFERENCE DOCUMENTS	COST ¹	ACRES
1967	SITE ACQUIRED	RESO. NO. R-117217		5.60
	SITE DEDICATED	ORD. NO.		
	GOP CONSULTANT HIRED	RESO. NO.	NAME	
	P.B.R. BOARD APPROVAL	P.F. & R. APPROVAL	DATE	
4-22-61	INITIAL DEVELOPMENT	CIP NO.	JO NO.	DRWG. NO. 5359-L
1-3-66	IMPERMENTS	CIP NO.	JO NO.	DRWG. NO. 7360-L
5-2-60	SPEAKERS	CIP NO.	JO NO. 21699	DRWG. NO. 8676-19 D
12-27-62	HANDRAIL	CIP NO.	JO NO. 17308	DRWG. NO. 10012-D
3-3-67	RR. FLUPEGUARD STA.	CIP NO.	JO NO. 17480	DRWG. NO. 12437-D
7-26-67	HANDRAIL	CIP NO.	JO NO. 17688	DRWG. NO. 12671-D
8-8-67	SHUFFLEBOARD CTY		17669	12624-D
7-1-69	ADD CLUBHOUSE		17647	13575-D

IMPROVEMENTS SUMMARY (DATA FROM AS-BUILT DRAWINGS)

ITEM	QUANTITY	ITEM	QUANTITY	ITEM	QUANTITY	ITEM	QUANTITY
TOTAL SITE	5.60 AC	PLAY AREA	SF	PAVED WALKS	14,653 SF	SECURITY LTS	STDS
IMPROVED AREA	5.55 AC	MULTI PURPOSE CT	SF	PARK ROADS	SF	BALL FIELD LTS	STDS
TURF	4.50 AC	TENNIS CTS	SF	PARKING LOT	SF	TENNIS CT. LTS	STDS
SHRUB BED	.43 AC	RESTROOM	1,317 SF	" " STALLS STD		MULTI PURPOSE CT.	STDS
NATURAL	AC	REC. BLDG	SF	" " STALLS HDCP			
OTHER LANDSCAPING	.05 AC	POOL BLDG	SF	COURT GAME AREA	SF	BACKSTOPS	EA
DIRT INFIELDS	AC	" " DECK	SF	LAWN EDGING	4,080 LF	TENNIS CTS	EA
		" " WATER	SF				
		SHUFFLEBOARD	5,796 SF				
		CLUBHOUSE	2,668 SF				
				REVISION	T.R. 2/14/89		

CITY OF SAN DIEGO PARK and RECREATION DEPARTMENT

THE GENERAL DEVELOPMENT PLAN
SCRIPPS, ELLEN BROWNING PARK

1180-COAST BLVD.
LAMBERT
COORDINATES 250-1686 THOMAS BROS. PG. 43A-E1

PSD
500