



# REPORT

## THE CITY OF SAN DIEGO TO THE PARK AND RECREATION BOARD

---

DATE ISSUED: July 11, 2012

REPORT NO: 102

ATTENTION: Park and Recreation Board  
Agenda of July 19, 2012

SUBJECT: North Park Mini-Park General Development Plan (GDP)

### SUMMARY

Issue - Should the Board approve the GDP for the North Park Mini-Park?

Director's Recommendation - Approve the GDP for the North Park Mini-Park.

Other Recommendations - The North Park Recreation Council recommended unanimous approval of the GDP for North Park Mini-Park on April 23, 2012 with a vote of 3-0-0. The motion to approve was as follows, "To approve the GDP as presented, and that the North Park Recreation Council works with City staff and other North Park organizations to develop a fundraising scheme and strategies to deal with potential security and crime issues."

The Design Review Committee (DRC) recommended unanimous approval of the GDP for North Park Mini-Park on May 9, 2012 with a vote of 11-0-0. The DRC recommended approval of the GDP with the following recommendations:

1. Do additional study of the blank wall to address heat and light reflection into the park space. The introduction of water or green wall may be viable options.
2. Move the accessible ramp to the stage to the back of the stage instead of running it at the front of the stage.
3. Expand on the design detail of the pergolas, especially those ends exposed to the adjacent streets.
4. Expand on the design detail of how the park's paving interfaces with the street right-of-way paving.
5. Incorporate design elements to discourage skateboard use within the park.
6. Provide a stronger design connection between the park and the boulders.
7. Carefully evaluate tree species selected and how to address adverse soil conditions to ensure the tree plantings are successful.
8. Consider incorporating moveable tables and chairs into the park's design to allow for flexible seating.

All of the recommendations by the DRC will be incorporated into the project, with the exception of #2 above: moving the accessible ramp to the back of the stage. This option was reviewed, but space limitations near the back of the stage would result in the ramp and handrails disrupting the view and circulation within the park.

Fiscal Impact – Annual maintenance costs for the park will be determined and budgeted when the scope for Phase I of the park has been identified and at the time funding has been secured for design and construction.

Water and Energy Conservation Status - The proposed project complies with all water and conservation guidelines contained in Council Policy 200-14.

Environmental – The North Park Mini-Park GDP has been processed through the City's Development Services Department (DSD) and the project has been determined to be exempt from CEQA pursuant to Section 15332 (In-Fill) of the State CEQA Guidelines.

## BACKGROUND

This project provides for the design of a GDP for an approximately 0.50 acre mini-park to be located between Granada Avenue and 29<sup>th</sup> Street, along North Park Way in the Greater North Park Community Planning Area. The mini-park will be located behind the recently renovated historic North Park Theater.

The community input process for the park included the establishment of an Advisory Group (stakeholder committee) and a number of publicly-noticed community open house and workshop meetings held by the City to gather input on the project. These meetings included: an Open House on 4/28/11 to identify community opportunities, assets, key issues, challenges, and project background information; a Visioning and Design Workshop on 6/4/11; an Open House and Workshop on 11/16/11 to review preliminary alternatives; and an Open House and Workshop on 3/19/12 to review the preferred alternative.

## DISCUSSION

Located in a dense, urban area of the City, this mini-park is expected to receive heavy community use as a central gathering space for passive recreational uses and events. The location of the park will provide a connection between the residential neighborhoods to the south and the Business District to the north.

Proposed park amenities will include: A large multi-purpose space for events such as movies in the park as projected on the theatre wall, a raised stage for performances, space for a temporary stage, interactive play sculptures, pergolas, sculptural wayfinding elements, lighting, seat walls, planters, trash receptacles, a drinking fountain, a donor's walk/arc for display of donor tiles or pavers, and a possible green wall. The park will also have numerous game tables to encourage use of the space during the day and at times of non-events. The park features a large grove of trees along the south side of the site to provide shade and to buffer the directly-adjacent homeowners.

The Greater North Park Community Planning Area is currently severely park deficient. The North Park Mini-Park project will add valuable population-based park acreage to the Greater North Park Community Planning Area.

The proposed GDP for the mini-park is one of three interrelated ongoing projects within the Greater North Park Community Planning Area. These projects include, in addition to the mini-park, the Jefferson Elementary School joint use area, and an associated Streetscape Master Plan.

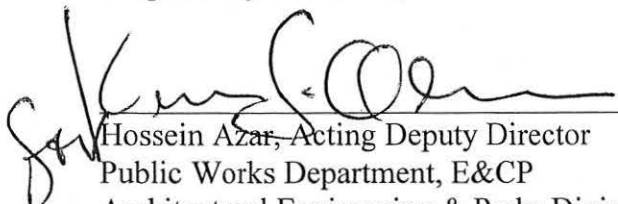
The Jefferson Elementary School joint use area recently opened to the public and is located at 3770 Utah Street, providing approximately 1.5 useable acres for the community to enjoy after school, on weekends and on holidays. The joint use area also includes a children's play area and a drinking fountain and will likely be used for more active types of recreational activities.

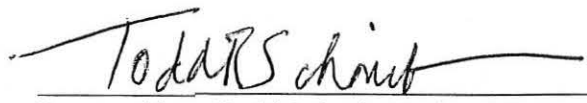
A Streetscape Master Plan is also in the process of being prepared which will propose amenities to tie the North Park Mini-Park and the Jefferson Elementary School joint use area together, as well as to tie the mini-park to University Avenue. These improvements will provide additional areas for community interaction.

#### ALTERNATIVES

1. Recommend approval of the proposed GDP for the North Park Mini-Park.
2. Recommend approval of the proposed GDP for the North Park Mini-Park, with modifications.
3. Do not recommend approval of proposed GDP for the North Park Mini-Park.

Respectfully submitted,

  
Hossein Azar, Acting Deputy Director  
Public Works Department, E&CP  
Architectural Engineering & Parks Division

  
Prepared by: Todd Schmit, Project Manager  
Public Works Department, E&CP  
Architectural Engineering & Parks Division

HA/trs

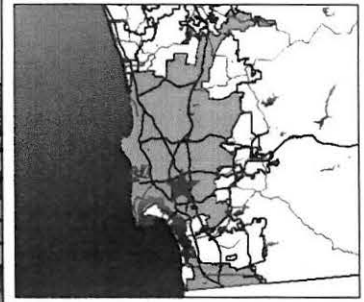
- Attachments:
1. Vicinity Map
  2. Illustrative Plan
  3. Illustrative Perspective
  4. Existing Context Plan (L1)
  5. Materials Plan (L2)
  6. Conceptual Grading Plan (L3)
  7. Planting Plan (L4)
  8. Details and Furnishings (L5-1)
  9. Details and Furnishings (L5-2)
  10. Details and Furnishings (L5-3)
  11. Details and Furnishings (L5-4)
  12. Plant Palette: Shrubs, Groundcovers and Perennials
  13. Plant Palette: Trees

cc: (without attachments)

Anthony Bernal, Council Representative, Council District 3 (MS 10A)  
Stacey LoMedico, Director, Park & Recreation Department (MS 37C)  
Scott Reese, Assistant Director, Park & Recreation Department (MS 37C)  
David Monroe, Deputy Director, Community Parks II, Park & Recreation Dept. (MS 35)  
Jim Winter, Project Officer II, Park & Recreation Department (MS 35)  
Kevin Oliver, Project Officer II, Public Works Department (MS 908A)  
Todd R. Schmit, Park Designer, Public Works Department (MS 908A)



# Location Map: North Park Mini-Park



### Legend

- Highways
- Freeway Ramps
- Freeways
- Roads**
- Arterial
- Local
- Unpaved
- Private
- Alley
- Humped
- Water Bodies
- Ocean

**DRAFT**

Printed: Apr 25, 2012 11:41:07 AM

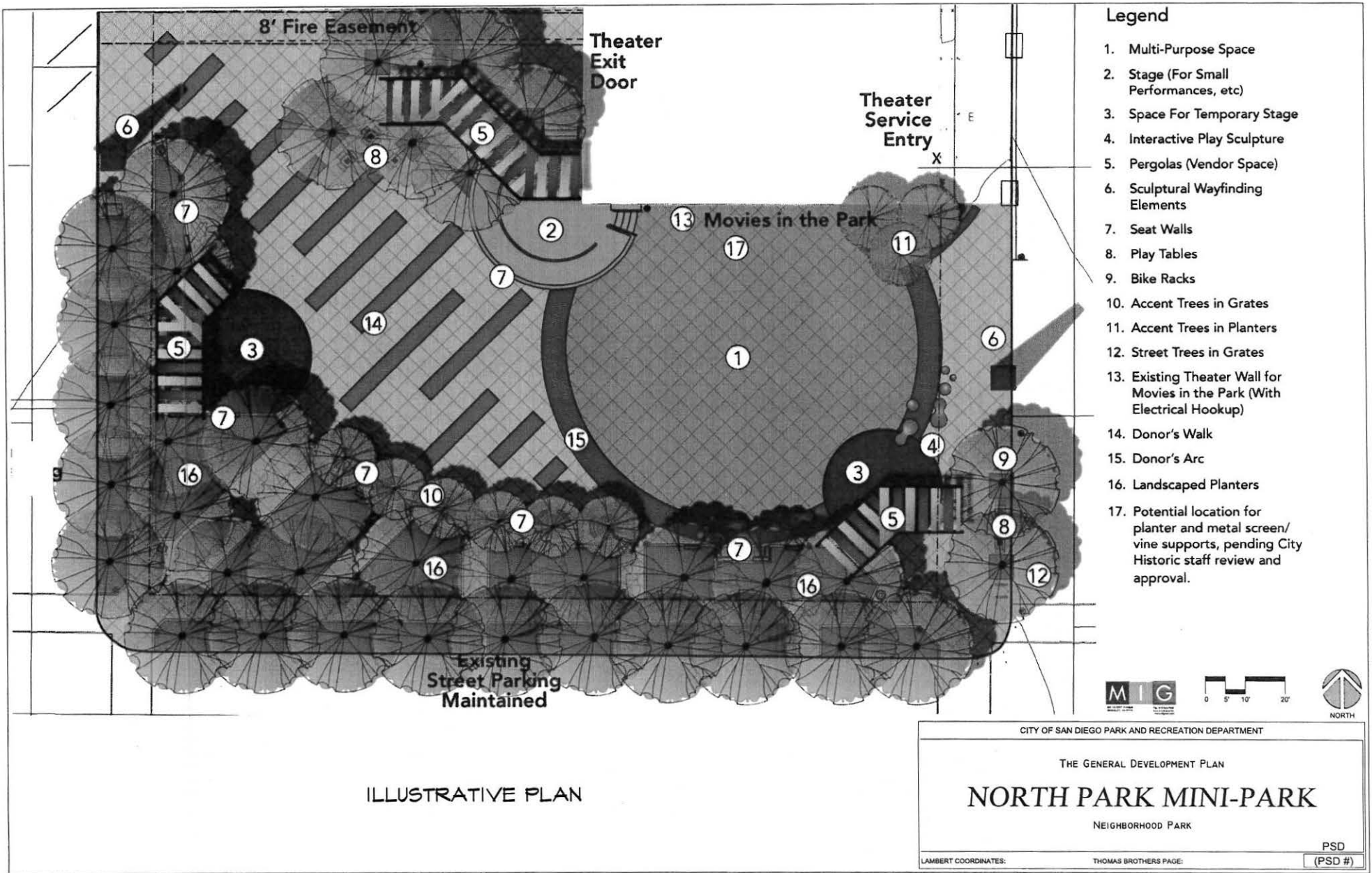


Scale: 1:4,839

THIS MAP/DATA IS PROVIDED WITHOUT WARRANTY OF ANY KIND, EITHER EXPRESS OR IMPLIED, INCLUDING BUT NOT LIMITED TO, THE IMPLIED WARRANTIES OF MERCHANTABILITY AND FITNESS FOR A PARTICULAR PURPOSE.

Note: This product may contain information from the SANDAG Regional Information System which cannot be reproduced without the written permission of SANDAG. This product may contain information reproduced with permission granted by RAND MCNALLY & COMPANY® to SanGIS. This map is copyrighted by RAND MCNALLY & COMPANY®. It is unlawful to copy or reproduce all or any part thereof, whether for personal use or resale, without the prior, written permission of RAND MCNALLY & COMPANY®. Full text of this legal notice can be found at: [http://www.sangis.org/Legal\\_Notice.htm](http://www.sangis.org/Legal_Notice.htm)





ILLUSTRATIVE PLAN

CITY OF SAN DIEGO PARK AND RECREATION DEPARTMENT

THE GENERAL DEVELOPMENT PLAN

# NORTH PARK MINI-PARK

NEIGHBORHOOD PARK

PSD (PSD #)

LAMBERT COORDINATES: THOMAS BROTHERS PAGE:



CITY OF SAN DIEGO PARK AND RECREATION DEPARTMENT

THE GENERAL DEVELOPMENT PLAN

# NORTH PARK MINI-PARK

NEIGHBORHOOD PARK

ILLUSTRATIVE PERSPECTIVE OF MINIPARK WITH FUTURE  
STREETSCAPE IMPROVEMENTS  
(LOOKING NW FROM 29TH STREET AND NORTH PARK WAY)

LAMBERT COORDINATES:

THOMAS BROTHERS PAGE:

PSD

(PSD #)

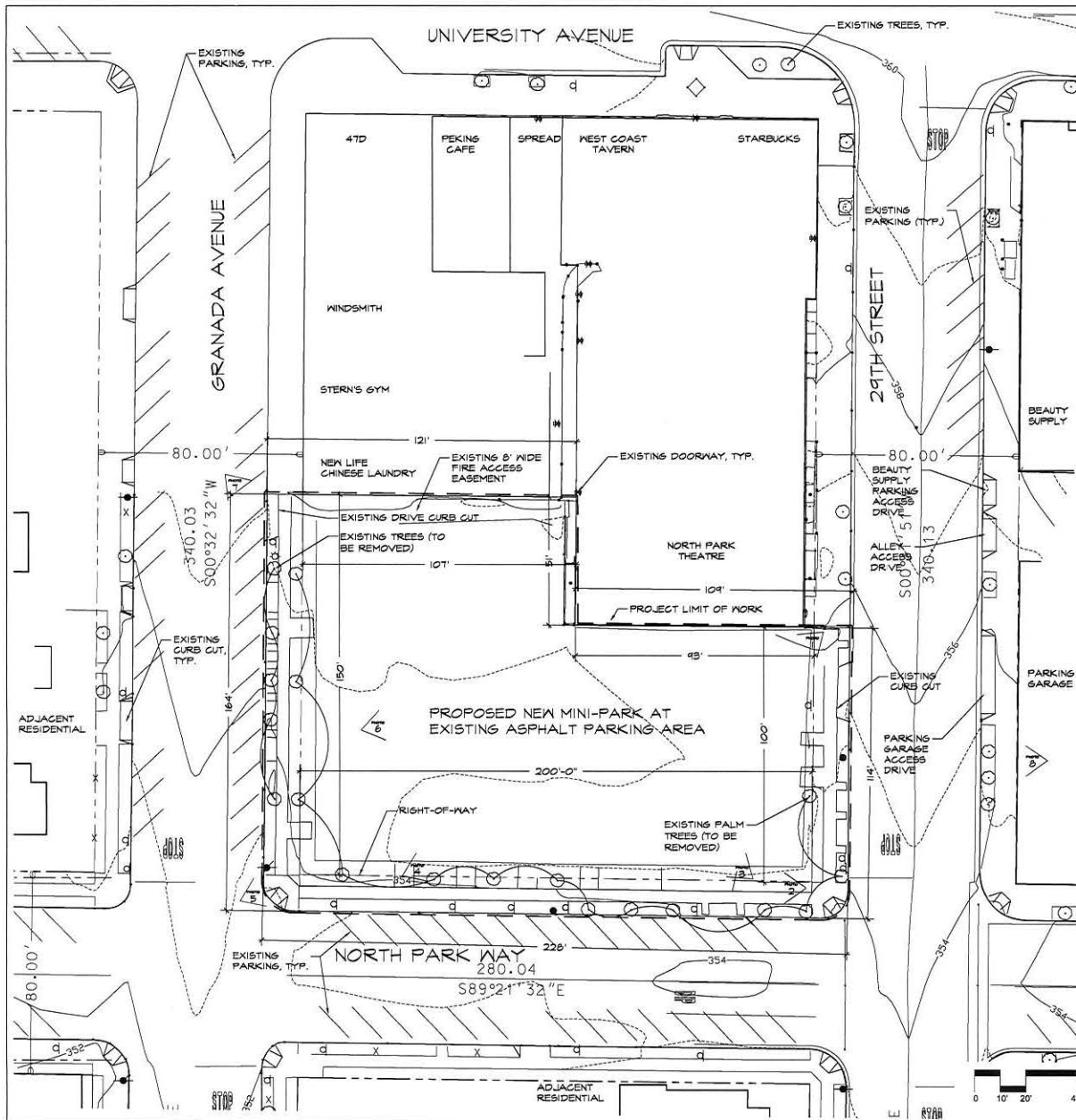


PHOTO 1: LOOKING SOUTH-WEST INTO MINI-PARK LOCATION FROM 24TH STREET



PHOTO 2: LOOKING WEST ALONG NORTH PARK WAY SIDEWALK - SOUTH EDGE OF THE MINI-PARK SITE



PHOTO 3: LOOKING NORTH-WEST INTO THE MINI-PARK SITE



PHOTO 4: LOOKING EAST ALONG NORTH PARK WAY TOWARDS PARKING STRUCTURE



PHOTO 5: LOOKING NORTH-EAST INTO THE MINI-PARK



PHOTO 6: LOOKING EAST FROM GRANADA AVE INTO THE MINI-PARK



PHOTO 7: LOOKING SOUTH-EAST INTO THE MINI-PARK AND TO RESIDENTIAL NEIGHBORS ACROSS NORTH PARK WAY



PHOTO 8: LOOKING INTO MINI-PARK AND RESIDENCES ACROSS GRANADA AVE FROM PARKING STRUCTURE

### LI EXISTING CONTEXT PLAN



CITY OF SAN DIEGO PARK AND RECREATION DEPARTMENT

THE GENERAL DEVELOPMENT PLAN

# NORTH PARK MINI-PARK

NEIGHBORHOOD PARK

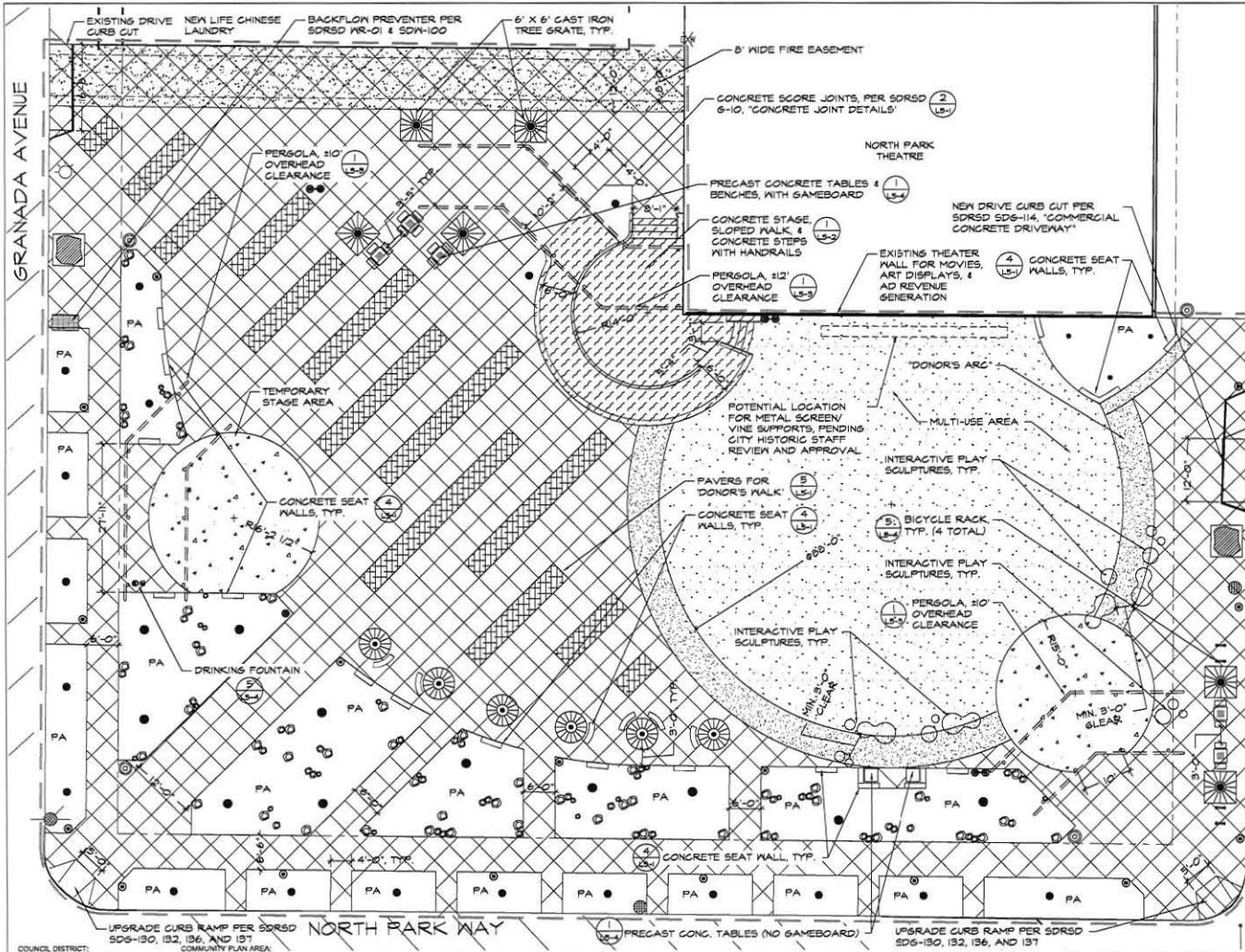


LAMBERT COORDINATES:

THOMAS BROTHERS PAGE:

PSD

(PSD #)



**LEGEND**

- PEDESTRIAN CONCRETE PAVING #1 (1) (1.5-1)
- PEDESTRIAN CONCRETE PAVING #2 (1) (1.5-1)
- PEDESTRIAN CONCRETE PAVING #3 (1) (1.5-1)
- CONCRETE STAGE, RAMP & STEPS (1) (1.5-2)
- DONOR PAVERS SET IN CONCRETE, COLOR #1 (1.5) (1.5-1)
- DONOR PAVERS SET IN CONCRETE, COLOR #2 (1.5) (1.5-1)
- FIRE ACCESS CONCRETE PAVING (3) (1.4-1)
- TRASH RECEPTACLE (5) (1.4-1)
- PRECAST CONCRETE TABLES & BENCHES (1) (1.4-1)
- CITY STNRD BIKE RACK (5) (1.4-1)
- DRINKING FOUNTAIN WITH ROCK SUMP (PER SORSO SDM-107) (5) (1.4-1)
- 1.5' to 2.5' DIAMETER RIVER RUN WASHED GRANITE BOULDERS (4) (1.5-4)
- 6'x6' CAST IRON TREE GRATE, PER SORSO L-4, 'TREE GRATES' (6) (1.5-4)
- 6' DIAM. CAST IRON TREE GRATE, PER SORSO L-4, 'TREE GRATES' (6) (1.5-4)
- INTERACTIVE PLAY SCULPTURE PA PLANTING AREA (1) (1.4)
- WAYFINDING SCULPTURE (EXISTING STREET LIGHT) (1) (1.4)
- EXISTING POWER POLE (1) (1.4)
- TREE (1) (1.4)
- PARK LIGHT 1 (2) (1.4-4)
- PARK LIGHT 2 (3) (1.4-4)
- PARK LIGHT 3 (3) (1.4-4)
- LIMIT OF WORK
- RIGHT-OF-WAY

**NOTES**

1. THE FOLLOWING ITEMS SHALL BE DESIGNED IN COORDINATION WITH PROJECT ARTIST: SCULPTURAL WAYFINDING ELEMENT, INTERACTIVE PLAY SCULPTURE, DECORATIVE EMBELLISHMENT FOR STAGE WALL, AND METAL SCREEN/VINE SUPPORTS AT THEATRE WALL. DONOR ACKNOWLEDGEMENT ELEMENTS SHALL ALSO BE DESIGNED IN COORDINATION WITH THE PROJECT ARTIST (SEE NOTE 2).
2. DONOR ACKNOWLEDGEMENT ELEMENTS TO BE DESIGNED FOR DONOR'S WALK, DONOR'S ARC AND SEAT WALLS. ADDITIONAL ELEMENTS, SUCH AS TREES, TABLES & BENCHES, MAY ALSO BE PROVIDED BY COMMUNITY SPONSORSHIP.
3. PARK LIGHTINGS SHALL BE DESIGNED TO PROVIDE MINIMUM 5 FOOT CANDLES (Fc) IN ALL PAVED AREAS WITH A MINIMUM UNIFORMITY OF 6, PER CONSULTANT'S GUIDE TO PARK DESIGN DEVELOPMENT.
4. PARK CONCRETE PAVING SHALL BE DESIGNED IN ACCORDANCE WITH SORSO SD6-115, "PAVEMENT DESIGN STANDARDS SCHEDULE J", 6-T 'SIDEWALK', AS WELL AS ANY SITE SPECIFIC GEOTECHNICAL RECOMMENDATIONS.

**L2 MATERIALS PLAN**



| DATE | ACTION               | REFERENCE DOCUMENTS | COST \$: | ACRES:    |
|------|----------------------|---------------------|----------|-----------|
|      | SITE ACQUIRED        | RESO. NO.           |          |           |
|      | SITE DEDICATED       | ORD. NO.            |          |           |
|      | GDP CONSULTANT HIRED | RESO. NO.           | NAME:    |           |
|      | P&R BOARD APPROVAL   | P&R APPROVAL        | DATE:    |           |
|      | INITIAL DEVELOPMENT  | CIP NO.             | J.O. NO. | DRWG. NO. |
|      |                      | CIP NO.             | J.O. NO. | DRWG. NO. |
|      |                      | CIP NO.             | J.O. NO. | DRWG. NO. |
|      |                      | CIP NO.             | J.O. NO. | DRWG. NO. |
|      |                      | CIP NO.             | J.O. NO. | DRWG. NO. |
|      |                      | CIP NO.             | J.O. NO. | DRWG. NO. |
|      |                      | CIP NO.             | J.O. NO. | DRWG. NO. |

| IMPROVEMENTS SUMMARY (DATA FROM AS-BUILT DRAWINGS) |          |                  |          |                         |          |
|--|----------|------------------|----------|-------------------------|----------|
| ITEM   | QUANTITY | ITEM             | QUANTITY | ITEM                    | QUANTITY |
| TOTAL SITE   | AC       | TOT LOT          | SF       | PAVED WALKWAYS          | STDBL    |
| IMPROVED AREA                                      | AC       | MULTIPURPOSE CT. | SF       | PARK ROADS              | STDBL    |
| TURF   | AC       | TENNIS CTS.      | SF       | PARKING LOT             | STDBL    |
| SHRUB BED  | AC       | RESTROOM         | SF       | PARKING STALLS-STD.     | STDBL    |
| NATURAL  | AC       | REC. BLDG.       | SF       | PARKING STALLS-DISABLED | STDBL    |
| D.G. PAVING  | AC       | POOL BLDG.       | SF       | COURT GAME AREA         | SF       |
| DIRT INFIELDS                                      | AC       | POOL DECK        | SF       | LAWN EDGING             | LF       |
|  |          | POOL WATER       | SF       | BLEACHERS               | EA       |
|  |          |                  |          | TRASH RECEPTACLES       | EA       |
|  |          |                  |          | REVISION                |          |

CITY OF SAN DIEGO PARK AND RECREATION DEPARTMENT

THE GENERAL DEVELOPMENT PLAN

# NORTH PARK MINI-PARK

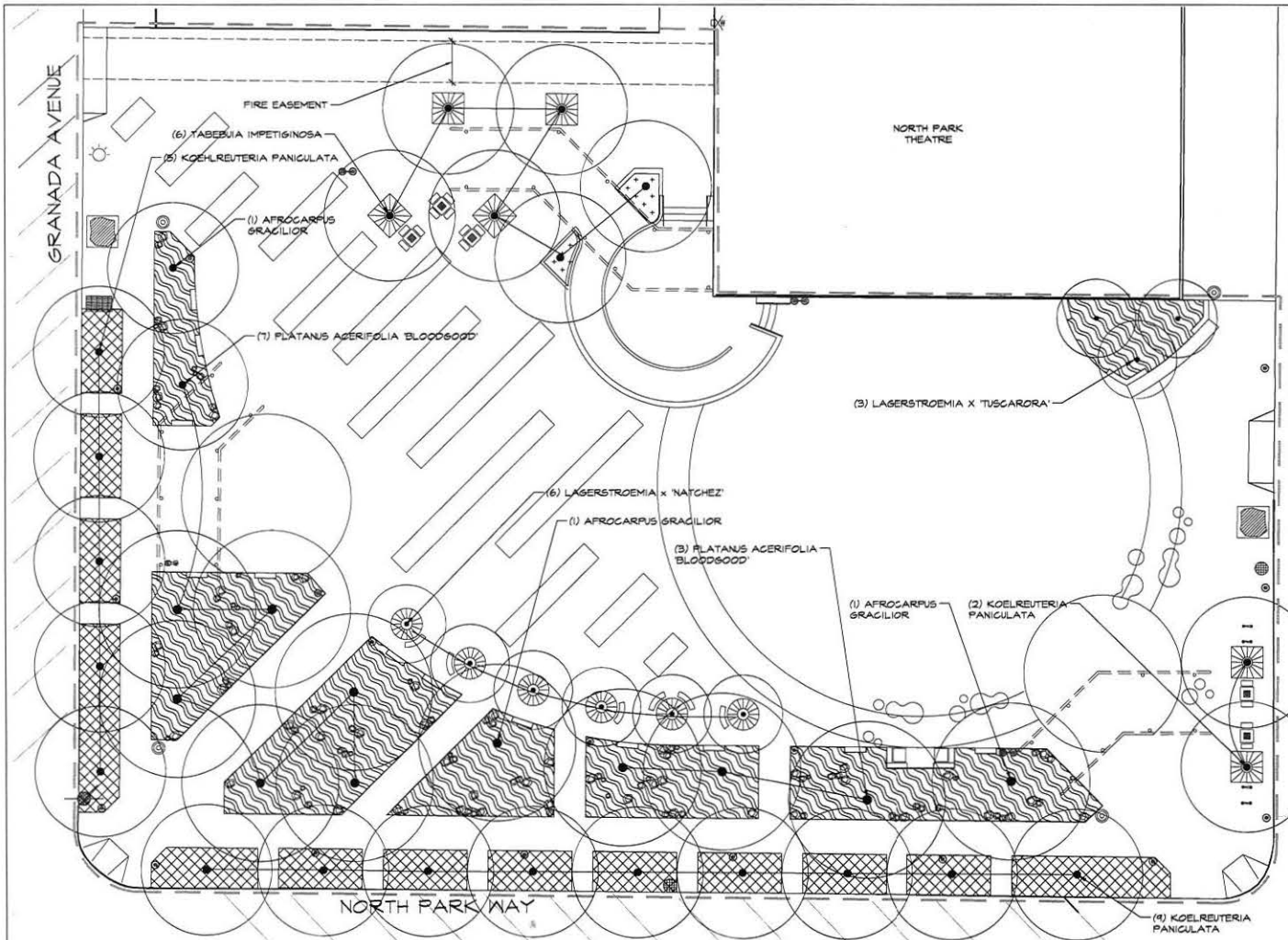
NEIGHBORHOOD PARK

PSD

LAMBERT COORDINATES: THOMAS BROTHERS PAGE: (PSD #)

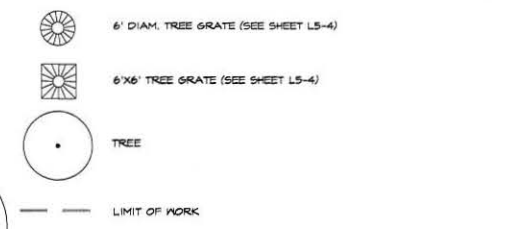






**PLANT LIST & LEGEND**

| BOTANICAL NAME                                   | COMMON NAME               | SIZE    | SPACING |
|--|---------------------------|---------|---------|
| <b>Street Plantings</b>                          |                           |         |         |
| <i>Street/Shoulder Trees</i>                     |                           |         |         |
| <i>Koelreuteria paniculata</i>                   | Golden Rain Tree          | 36" BOX | 20' OC  |
| <i>Shrubs/Perennials</i>                         |                           |         |         |
| <i>Agave attenuata</i>                           | Soft Agave                | 1 GAL   | 3' OC   |
| <i>Angustifolia 'Duke Gold'</i>                  | Duke Gold Kangaroo Paw    | 1 GAL   | 2' OC   |
| <i>Yucca filamentosa 'Gold Sword'</i>            | Golden Sword Yucca        | 1 GAL   | 4' OC   |
| <i>Groundcover</i>                               |                           |         |         |
| <i>Liatris morsevidensis</i>                     | Trailing Liatris          | 1 GAL   | 6' OC   |
| <b>Plant Stage Planting</b>                      |                           |         |         |
| <b>Accent Trees</b>                              |                           |         |         |
| <i>Lagerstroemia x 'Natchez'</i>                 | Natchez Crap Myrtle       | 36" BOX | 15' OC  |
| <i>Lagerstroemia x 'Tuscarora'</i>               | Tuscarora Crap Myrtle     | 36" BOX | 15' OC  |
| <i>Tabesvia impetiginosa</i>                     | Flk. Trumpet Tree         | 36" BOX | 15' OC  |
| <i>Groundcover</i>                               |                           |         |         |
| <i>Abelia grandiflora 'Prostrata'</i>            | Prostrate Abelia          | 1 GAL   | 4' OC   |
| <b>Park Perennials Planting</b>                  |                           |         |         |
| <b>Shade Trees</b>                               |                           |         |         |
| <i>Afrocarpus gracilior</i>                      | African Fern Pine         | 36" BOX | 25' OC  |
| <i>Platanus acerifolia 'Bloodgood'</i>           | London Plane Tree         | 36" BOX | 25' OC  |
| <i>Shrubs/Perennials</i>                         |                           |         |         |
| <i>Arbutus unedo 'Tina King'</i>                 | Bf'n King Strawberry Tree | 9 GAL   | 8' OC   |
| <i>Gaillardia harringtonii</i>                   | False Heather             | 1 GAL   | 10' OC  |
| <i>Escallonia neuportii 'Dwarf'</i>              | Dwarf Escallonia          | 1 GAL   | 4' OC   |
| <i>Helianthus scaberrimus 'Limegold'</i>         | Limegold Licorice Plant   | 1 GAL   | 3' OC   |
| <i>Yucca filamentosa 'Golden Sword'</i>          | Golden Sword Yucca        | 1 GAL   | 4' OC   |
| <i>Penstemon blue bedder</i>                     | Blue Bedder Beard Tongue  | 1 GAL   | 10' OC  |
| <i>Phormium tenax</i>                            | Phormium                  | 1 GAL   | 15' OC  |
| <i>Phormium tenax 'New Zealand Flax'</i>         | New Zealand Flax          | 1 GAL   | 3' OC   |
| <i>Rhus granatum 'Hale'</i>                      | Dwarf Fothergilla         | 1 GAL   | 4' OC   |
| <i>Rapanea indica 'Clariz'</i>                   | Cara n'lan Hardhorn       | 9 GAL   | 4' OC   |
| <i>Groundcover</i>                               |                           |         |         |
| <i>Abelia grandiflora 'Prostrata'</i>            | Prostrate Abelia          | 1 GAL   | 4' OC   |
| <i>Carlisa macrocarpa 'Nana Compacta Tuttle'</i> | Tuttle Nana Plum          | 1 gal.  | 4' OC   |



- NOTES**
- TREES IN TYPICAL PLANTERS SHALL BE PER SDRSD L-1, "TREE PLANTING AND STAKING."
  - TREES PLANTED IN GRATES SHALL BE PER SDRSD L-4, "TREE GRATES." SEE SHEET L5-X FOR CUSTOM TREE GRATE INFORMATION. INCLUDE ROOT CONTROL BARRIER PER SDRSD L-6, "ROOT CONTROL BARRIER."
  - SHRUB PLANTINGS SHALL BE PER SDRSD L-2, "SHRUB PLANTING."

**L4 PLANTING PLAN**



CITY OF SAN DIEGO PARK AND RECREATION DEPARTMENT

THE GENERAL DEVELOPMENT PLAN

# NORTH PARK MINI-PARK

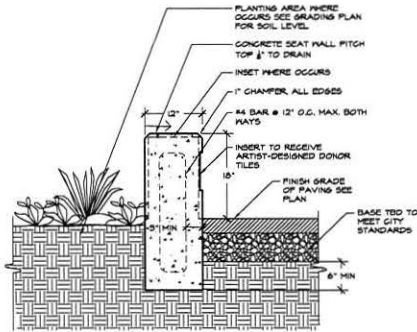
NEIGHBORHOOD PARK

PSD  
(PSD #)

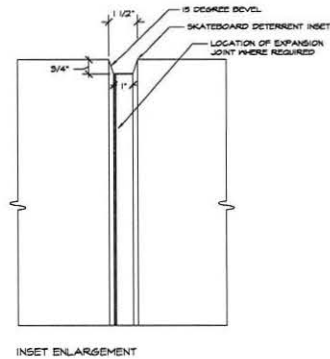
LAMBERT COORDINATES: \_\_\_\_\_ THOMAS BROTHERS PAGE: \_\_\_\_\_

**NOTES:**

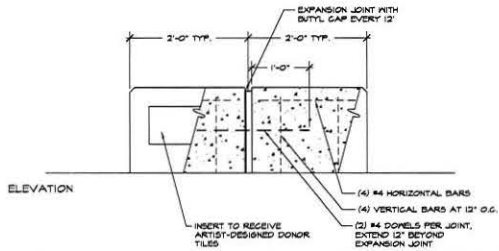
1. FINISH - ALL WALLS TO RECEIVE LIGHT SAND FINISH WITH ANTI-DRAFFITI COATING
2. COLOR - INTERNAL COLOR TO BE SOLOMON COLOR #415, TERRA GOTTA



SECTION



INSET ENLARGEMENT

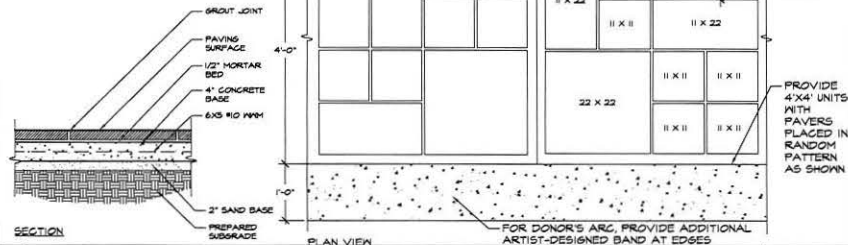


ELEVATION

**4 CONCRETE SEATWALL**

Scale: 1" = 1'-0"

- NOTES:**
1. DONOR PAVERS TO BE DESIGNED IN CONJUNCTION WITH PROJECT ARTIST MESSAGE STYLE/CONTENT TO BE DETERMINED IN COORDINATION WITH DONORS AND CITY STAFF.
  2. PAVERS SHALL BE CONCRETE OR OTHER DURABLE MATERIAL APPROVED BY CITY STAFF IN CONJUNCTION WITH THE PROJECT ARTIST AND ARCHITECT.
  3. PROVIDE PAVERS IN A VARIETY OF SIZES: 11"x11", 11"x22", AND 22"x22"



SECTION

PLAN VIEW

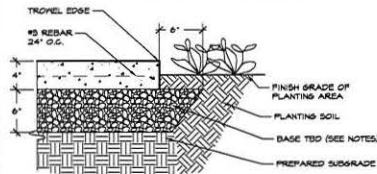
**5 DONOR PAVERS AT DONOR'S WALK AND DONOR'S ARC**

Scale: 1" = 1'-0"

**NOTES:**

1. SORSD 508-115, "PAVEMENT DESIGN STANDARDS SCHEDULE J", 8-7 "SIDEWALK", AS WELL AS ANY SITE SPECIFIC GEOTECHNICAL RECOMMENDATIONS

|  | FINISH   | COLOR   |
|--|--|---|
| PED. CONC. PAVING #1   | LIGHT BROOM  | SOLOMON COLOR #115<br>CEDAR, 2LB PER 1 YARD       |
| PED. CONC. PAVING #2   | LIGHT BROOM  | SOLOMON COLOR #115<br>DUST, 2LB PER 1 YARD        |
| PED. CONC. PAVING #3   | RANDOM ALTERNATING<br>TEXTURE, MED. BROOM<br>LIGHT SANDBLAST, MED.<br>SANDBLAST FINISH | SOLOMON COLOR #115 TRAIL<br>DUST, 2LB FOR 4 YARD  |
| CONC. STAIR RAMP<br>AND STEPS<br>ZONE FOR DONOR<br>PAVERS #1 | BROOM  | SOLOMON COLOR #115<br>HAMBOLD, 2LB PER 1 YARD     |
| CONC. STAIR RAMP<br>AND STEPS<br>ZONE FOR DONOR<br>PAVERS #2 | LIGHT SANDBLAST  | SOLOMON COLOR #115<br>TERRA GOTTA, 2LB PER 1 YARD |
|  | LIGHT SANDBLAST  | SOLOMON COLOR #115<br>AVOCADO, 2LB PER 1 YARD     |

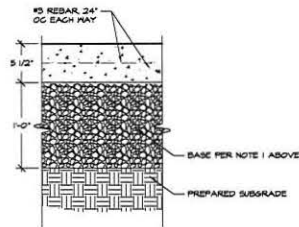


**1 PEDESTRIAN CONCRETE PAVING**

Scale: 1/2" = 1'-0"

**NOTES:**

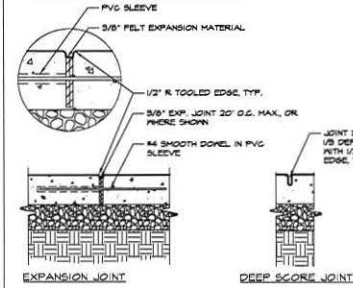
1. SORSD 508-115, "PAVEMENT DESIGN STANDARDS SCHEDULE J", AS WELL AS ANY SITE SPECIFIC GEOTECHNICAL RECOMMENDATIONS
2. PROVIDE CONCRETE IN ACCORDANCE WITH SORSD 6-4 "SIDEWALK JOINT LOCATIONS AND 6-10 CONCRETE JOINTS. SEE (2) (1.5-1)"
3. FINISH & COLOR TO MATCH PEDESTRIAN CONCRETE PAVING #5. SEE (1) (1.5-1)"



EXPANSION JOINT

**NOTES:**

1. ALL CONCRETE JOINTS TO BE DESIGNED PER SORSD 6-10 "CONCRETE JOINT DETAILS"
2. PROVIDE CONTROL JOINTS @ 8'-0" MAX SO THERE IS NO FIELD OF CONCRETE WITH ASPECT RATIO GREATER THAN 1.8 TO 1. ADHERE TO SORSD 6-4 "SIDEWALK JOINT LOCATIONS."
3. PROVIDE EXPANSION JOINT WHERE CONCRETE PAVING MEETS VERTICAL SURFACE, AND PER SORSD 6-4 "SIDEWALK JOINT LOCATIONS."



EXPANSION JOINT

DEEP SCORE JOINT

**2 CONCRETE JOINTS**

Scale: 1/2" = 1'-0"

**MIG L5-1 DETAILS & FURNISHINGS**

CITY OF SAN DIEGO PARK AND RECREATION DEPARTMENT

THE GENERAL DEVELOPMENT PLAN

**NORTH PARK MINI-PARK**

NEIGHBORHOOD PARK

PSD

LAMBERT COORDINATES:

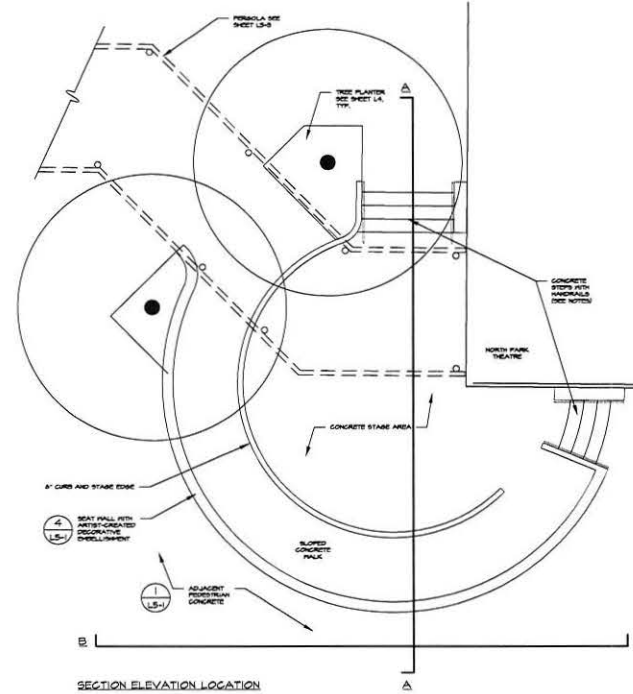
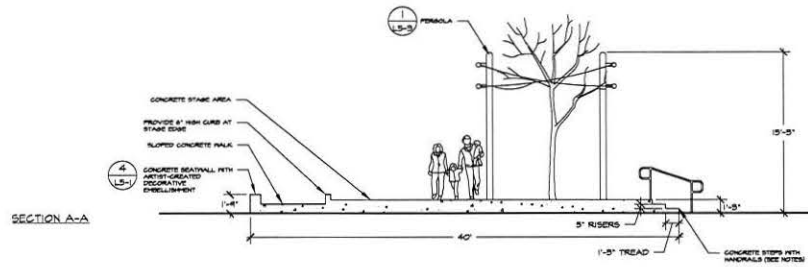
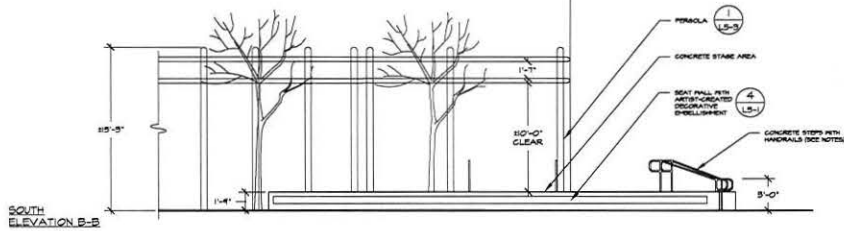
THOMAS BROTHERS PAGE:

(PSD #)

NOTES:

1. CONCRETE STEPS, STAGE, SLOPED WALK, GURD & SEATWALL TO BE INTEGRAL COLOR. SEE SHEET L5-1 FOR COLOR AND FINISH.
2. CONCRETE STEPS TO BE PER SORSO M-26 "CONCRETE STEPS."
3. HANDRAIL TO BE PER SORSO M-24, "PEDESTRIAN PROTECTIVE RAILING DETAILS NO. 1."
4. PERGOLA IS SHOWN TO INDICATE SCALE AND RELATIONSHIP ONLY. SEE SHEET L5-3 FOR INFORMATION REGARDING THE PERGOLA.

# NORTH PARK THEATRE



STAGE

Scale: 3/16" = 1'-0"



## L5-2 DETAILS & FURNISHINGS

CITY OF SAN DIEGO PARK AND RECREATION DEPARTMENT

THE GENERAL DEVELOPMENT PLAN

# NORTH PARK MINI-PARK

NEIGHBORHOOD PARK

LAMBERT COORDINATES:

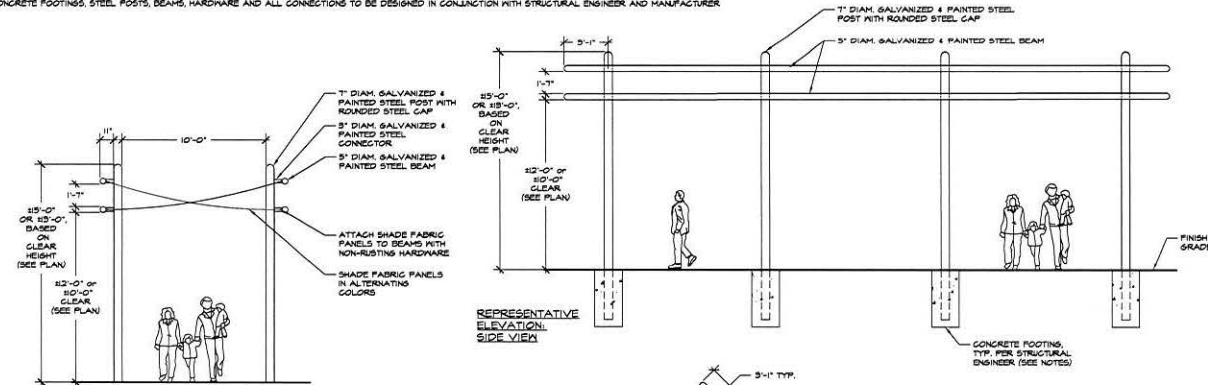
THOMAS BROTHERS PAGE:

PSD

(PSD #)

**NOTES**

1. EACH PERGOLA TO HAVE DISTINCT POST LOCATION, BEAM CONFIGURATION AND ASSOCIATED FABRIC PANEL ARRANGEMENT. THIS DETAIL PROVIDES REPRESENTATIVE EXAMPLES OF SCALE, SIZE AND DESIGN INTENT.
2. SHADE FABRIC PANELS TO BE ALTERNATING COLORS, RED AND YELLOW. SHADE FABRIC TO BE MADE OF UV STABILIZED HIGH-DENSITY POLYETHYLENE, KNITTED WITH MONOFILAMENT AND TARE YARN FILLER AND SHALL MEET ASTM E84 AND LOCAL FIRE CODES
3. ALL STEEL MEMBERS SHALL BE DESIGNED IN STRICT ACCORDANCE WITH AISI AND AISI SPECIFICATIONS FOR COLD FORMED MEMBERS
4. CONCRETE FOOTINGS, STEEL POSTS, BEAMS, HARDWARE AND ALL CONNECTIONS TO BE DESIGNED IN CONJUNCTION WITH STRUCTURAL ENGINEER AND MANUFACTURER



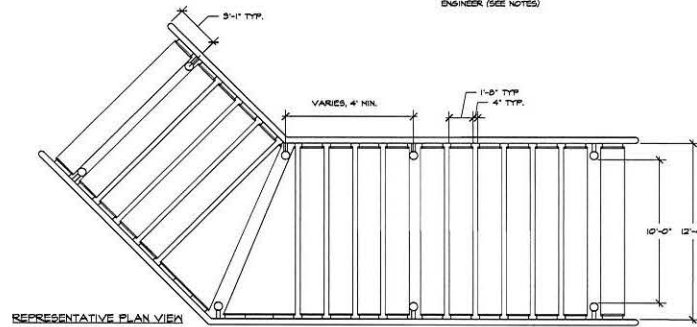
REPRESENTATIVE ELEVATION, END VIEW



REPRESENTATIVE IMAGE, SHADE FABRIC



REPRESENTATIVE IMAGE, END VIEW



REPRESENTATIVE PLAN VIEW

Scale: 1/4" = 1'-0"

**MIG** L5-3 DETAILS & FURNISHINGS

CITY OF SAN DIEGO PARK AND RECREATION DEPARTMENT

THE GENERAL DEVELOPMENT PLAN

**NORTH PARK MINI-PARK**

NEIGHBORHOOD PARK

PSD

LAMBERT COORDINATES:

THOMAS BROTHERS PAGE:

(PSD #)

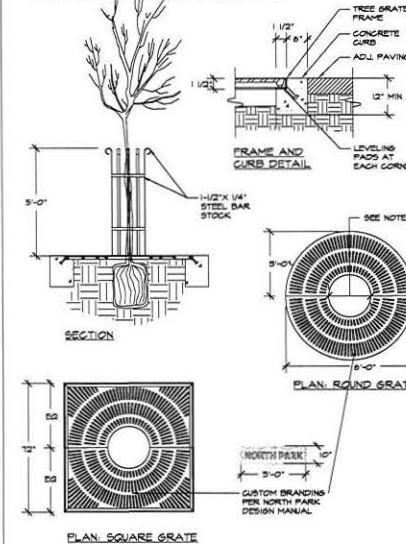
PERGOLA

- NOTES:
- BIKE RACK, CITY STANDARD, COLOR 'BLUE'
  - TRASH RECEPTACLE, SOUTH BAY FOUNDRY, MODEL DTR 125, RECYCLING PLATE OPTION, POWDERCOAT FOREST GREEN ('LITTLE ITALY GREEN') IV ANTI-GRAFFITI COATING
  - DRINKING FOUNTAIN, HAWK MODEL 3500 LB - H-LON, ADA



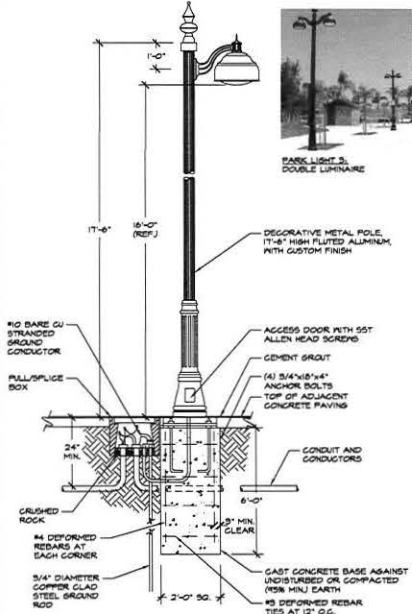
5 SITE FURNISHINGS      Scale: 1/2" = 1'-0"

- NOTES:
- TREE GRATES - SOUTH BAY FOUNDRY MODELS LISTED BELOW OR APPROVED EQUAL
    - STYLE '9TA' RADIAL BURST PATTERN WITH CUSTOM 'NORTH PARK' BRANDING, SQUARE TREE GRATE & FRAME, SIZES: 12"X12", ROUND TREE GRATE & FRAME, SIZES 12" DIAM. SEE LANDSCAPE PLANS FOR LOCATION
    - SLOT WIDTH: 3/8" TO 1/2" MAXIMUM, IN COMPLIANCE WITH ADA GUIDELINES, CAST IRON GRATE IV TREE OPENING SIZE 20", AND KNOCKOUT FOR 36" DIAM.
    - FRAME: FROM 1-3/4" X 1-3/4" X 1/2" STEEL ANGLE WITH STANDARD 1/2" DIA ANCHORS WELDED TO FRAME
    - ALL COMPONENTS TO BE HOT DIP GALVANIZED
    - SUBMIT SHOP DRAWINGS FOR APPROVAL
  - ROUND TREE GUARD: SOUTH BAY FOUNDRY STYLE 60C
  - ALL TREE PLANTING IN GRATES SHALL BE PER SORDS L-4 'TREE GRATE' AND S01-000 'SUPPLEMENT TO REGIONAL STANDARD DRAWINGS'



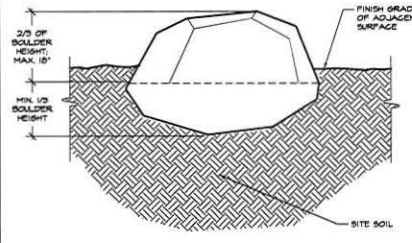
6 TREE GRATES      Scale: 3/8" = 1'-0"

- NOTES:
- PARK LIGHT 2, ARCHITECTURAL AREA LIGHTING, SINGLE LUMINAIRE, FINISH-HQ-10HPS-BLK, MOUNTED ON 16" ALUMINUM POLE
  - PARK LIGHT 3 (SIMILAR TO PARK LIGHT 2), ARCHITECTURAL AREA LIGHTING, DOUBLE LUMINAIRE, (2)FINISH-HQ-10HPS-BLK, MOUNTED ON 16" ALUMINUM POLE
  - PULL-SERVICE BOX INSTALLATION SHALL BE PER SORDS DRAWINGS L-9 'LIGHT POLE PAD IN TYP. ANGLE'
  - GROUNDING SHALL BE PER SORDS E-2, 'GROUNDING FOR CONCRETE LIGHTING STANDARDS'
  - POLE BASE FOUNDATION DESIGN SHALL BE REVIEWED AND APPROVED BY A REGISTERED STRUCTURAL ENGINEER PRIOR TO CONSTRUCTION



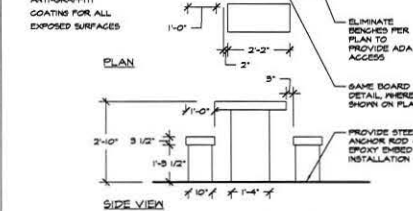
3 PARK LIGHT 2 & PARK LIGHT 3      Scale: N.T.S.

- NOTES:
- BOLLERS SHALL BE RIVER RUN WASHED GRANITE BOLLERS. PROVIDE SAMPLES OR PHOTOS FOR APPROVAL BY LANDSCAPE ARCHITECT PRIOR TO DELIVERY.
  - BOLLERS SHALL BE SET FIRMLY INTO THE SOIL, SO THAT THEY WILL NOT ROLL, ROTATE, OR SETTLE.
  - BOLLER PLACEMENT SHALL NOT IMPEDE DRAINAGE.



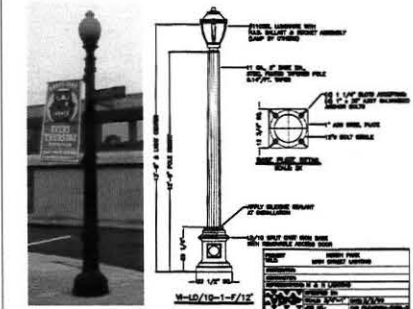
4 BOLLERS IN PLANTING AREA      Scale: 1/2" = 1'-0"

- NOTES:
- TABLES AND BENCHES ARE BY QUIGAGRETE OR APPROVED EQUAL
  - COLOR & FINISH: EGOCAST, EGOI, STRATA, SANTA FE SANDBLAST FINISH OR APPROVED EQUAL
  - PROVIDE ANTI-GRAFFITI COATING FOR ALL EXPOSED SURFACES

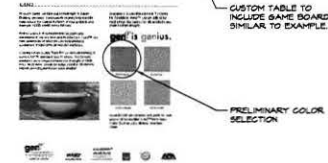


1 PRECAST CONG. TABLE & BENCH      Scale: 1/2" = 1'-0"

- NOTES:
- PARK LIGHT 1, VISOO PEDESTRIAN LIGHT, MODEL V1-LP/10-1-F/12
  - ALL CAST IRON LIGHT POLE PARTS TO BE FACTORY FINISHED & PAINTED COLOR TO MATCH EXISTING NORTH PARK STANDARD.



2 PARK LIGHT 1      Scale: N.T.S.



**MIG** L5-4 DETAILS & FURNISHINGS

CITY OF SAN DIEGO PARK AND RECREATION DEPARTMENT

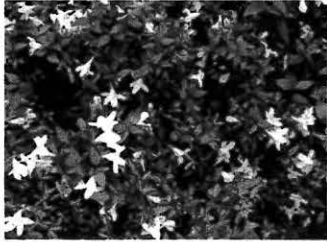
THE GENERAL DEVELOPMENT PLAN

**NORTH PARK MINI-PARK**

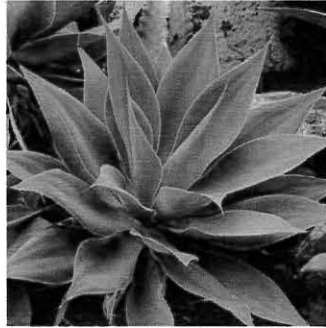
NEIGHBORHOOD PARK

PSD (PSD #)

LAMBERT COORDINATES:      THOMAS BROTHERS PAGE:



*Abelia grandiflora* 'Prostrata',  
**Prostrate Abelia**



*Agave attenuata*,  
**Soft Agave**



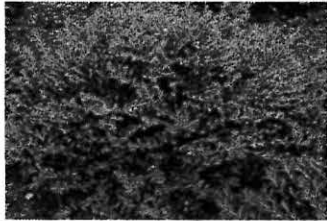
*Anigozanthos* 'Bush Gold',  
**Bush Gold Kangaroo Paw**



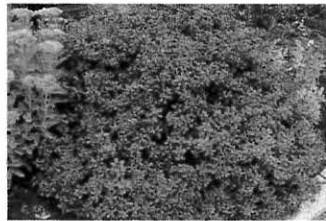
*Arbutus unedo* 'Elfin King',  
**Elfin King Strawberry Tree**



*Carissa macrocarpa* 'Nana Compacta Tuttlei',  
**Tuttle Natal Plum**



*Cuphea hyssopifolia*,  
**False Heather**



*Escallonia* 'Newport Dwarf',  
**Newport Dwarf Escallonia**



*Helichrysum petiolare* 'Limelight',  
**Limelight Licorice Plant**



*Hemerocallis* evergreen hybrid,  
**Yellow Day Lily**



*Lantana montevidensis*,  
**Trailing Lantana**



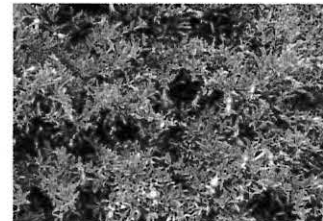
*Penstemon* 'Blue Bedder',  
**Blue Bedder Beard Tongue**



*Phormium* 'Flamingo',  
**Flamingo New Zealand Flax**



*Phormium* 'Jester',  
**Jester New Zealand Flax**



*Punica granatum* 'Nana',  
**Dwarf Pomegranite**



*Raphiolepis indica* 'Clara',  
**Clara Indian Hawthorn**

**PLANT PALETTE: SHRUBS, PERENNIALS, AND  
GROUNDCOVER**



CITY OF SAN DIEGO PARK AND RECREATION DEPARTMENT

THE GENERAL DEVELOPMENT PLAN

**NORTH PARK MINI-PARK**

NEIGHBORHOOD PARK

LAMBERT COORDINATES: \_\_\_\_\_ THOMAS BROTHERS PAGE: \_\_\_\_\_

PSD (PSD #) \_\_\_\_\_



*Afrocarpus gracilior*,  
**African Fern Pine**



*Koelreuteria paniculata*,  
**Golden Rain Tree**



*Tabebuia impetiginosa*,  
**Pink Trumpet Tree**



*Lagerstroemia x 'Natchez'*,  
**Natchez Crape Myrtle**



*Lagerstroemia x 'Tuscarora'*,  
**Tuscarora Crape Myrtle**



*Platanus acerifolia 'Bloodgood'*,  
**London Plane Tree**

## PLANT PALETTE: TREES



CITY OF SAN DIEGO PARK AND RECREATION DEPARTMENT

THE GENERAL DEVELOPMENT PLAN

# NORTH PARK MINI-PARK

NEIGHBORHOOD PARK

LAMBERT COORDINATES: \_\_\_\_\_ THOMAS BROTHERS PAGE: \_\_\_\_\_

PSD (PSD #) \_\_\_\_\_