

San Diego Canyonlands

Dedication – Public Vetting Process



www.sdcanionlands.org

Dedication of City Lands

City Council has the authority to Dedicate City-owned lands.

Protects City ownership and provides reliable OS preservation & recreational opportunities within our communities.

Reversal requires 2/3 vote of electorate.

- “Designated” OS has no formal protection → can be sold, converted, or transferred.

Provides framework for future planning as City grows.

- NO additional maintenance requirements and
- NO additional cost for maintenance.

Council Policy 700-17 (V)(c)

Allows For Roads & Utilities

Roads:

City Charter Section 55 **authorizes City Council to approve roads** through dedicated land.

Utilities:

*“For open space park land, reservation of the **City Council’s authority to establish easements for utility purposes in, under, and across the dedicated property so long as such easements and the facilities to be located therein do not significantly interfere with the park and recreational use of the property.”***

Planning & Protecting Land Form

- **1968** - *SD City Planning Department Report laid groundwork for Open Space in San Diego*
- **1973** - *Plan for Preservation of Natural Parks for San Diego (1979 Progress Guide Open Space Element)*
- **1978** - Proposition C (steep slopes, lot splits & purchases)
- Steep Hillside Ordinance
- Environmentally Sensitive Lands (ESL)
- **1990s** MSCP & MHPA -Multiple Species/Habitat Conservation
- **2008** General Plan

General Plan Criteria

Urban Design Element

A.1 Preserve and protect natural landforms and features.

- (a) Protect the integrity of community plan **designated open space areas***
- (b) Continue to implement the MSCP to conserve San Diego's natural environment **and create a linked open space system**. Preserve and enhance remaining naturally occurring features such as wetlands, **riparian zones, canyons, and ridge lines**.*

A.2 Open Space Linkages

*Use open space and landscape to **define and link** communities.*

General Plan Criteria

Conservation Element

B.1 Protect and conserve the landforms, canyon lands, and open space that:

- *Define the City's urban form*
- *Provide public views/vistas*
- *Serve as core biological areas and wildlife linkages*
- *Are wetlands habitats*
- *Provide buffers within and between communities*
- *Or provide recreational opportunities.*

General Plan CE.B.1

Protect and conserve the landforms, canyon lands, and open space that:

- *Define the City's urban form*
- *Provide public views/vistas*
- *Serve as core biological areas and wildlife linkages*
- *Are wetlands habitats*
- *Provide buffers within and between communities*
- *Or provide recreational opportunities.*



Dedication History

2006

- *SD Civic Solutions* (many now with SDCL)
- > White Paper Presentation at Natural Resources & Culture
- > Park & Rec. Staff reported >17,000 acres ripe for dedication

2007

- **6,600 acres dedicated.** Mayor Sanders sponsored and Senator Kehoe authored state legislation that was ratified by City Council. Process saves >\$1 million in entitlement/survey costs.
- **10,500 acres still require public review**

2009-2010 (SDCL)

- Reviews 12,327 acres
- Proposes ~11,433 acres for dedication

2011-2012

- SDCL conducts public review



Review - Candidate Site Maps

Legend

- Council Districts
- Major Roads
- Streams
- Sewer (In/Near Open Space)
- Railroads
- Trails (General Plan)
- Schools

City-Owned Open Space

- Dedicated Open Space (after Kehoe bill)
- Dedicated Open Space (before Kehoe bill)
- Parks
- Designated Open Space *
- Additional Open Space for Consideration **

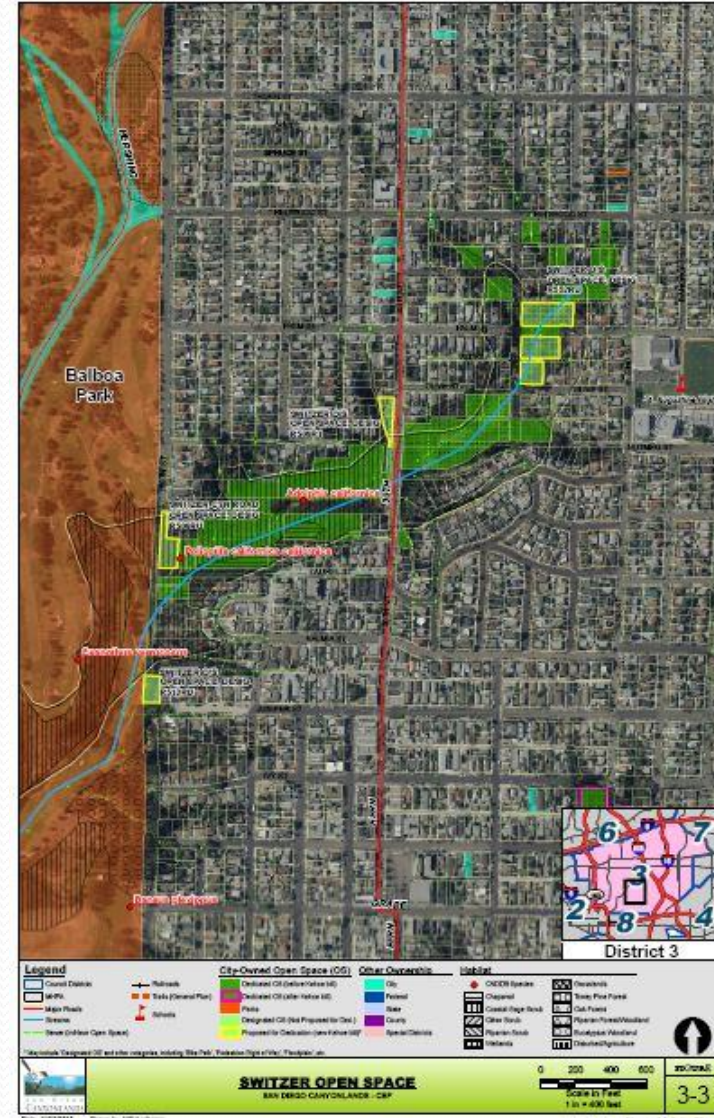
Other Ownership

- City (not Open Space)
- Federal
- State
- County
- Special Districts

Habitat

- CNDDDB Species
- MHPA
- Chaparral
- Coastal Sage Scrub
- Other Scrub
- Riparian Scrub
- Wetlands
- Grasslands
- Torrey Pine Forest
- Oak Forest
- Riparian Forest/Woodland
- Eucalyptus Woodland
- Disturbed/Agriculture

* Designated O.S. proposed for conversion to Dedicated O.S.
 ** Other types of O.S. with potential for conversion to Dedicated O.S.



By Managing Department	Acres	Sites	% of Proposed Area
Parks & Recreation	10,669.48	257	93.33
Transportation	335.91	54	2.94
Real Estate Assets	305.24	23	2.67
Metro Wastewater	100.73	3	0.88
Water	21.15	2	0.18

By City Council District

District 1	4,126.19	113	36.09
District 5 (San Pasqual Valley Open Space Only)	2,470.12	2	21.61
District 5	1,409.30	49	12.33
District 7	2,561.56	46	22.41
District 8	492.52	46	4.31
District 4	152.50	29	1.33
District 6	127.56	16	1.12
District 3	67.99	30	0.59
District 2	24.77	8	0.22

TOTAL PROPOSED
(Current 10/20/11)

11,432.51

339

100

www.sdcanyonlands.org

Firefox | Gmail - Inbox (1) - willgeorgeanderso... | Information Packages

http://www.sdcanyonlands.org/land-information/information-packages

Norton Safe Search | Search | Safe Web | Identity Safe

SAN DIEGO CANYONLANDS

Home About Us The Canyons Programs Maps Events Contact

PARK DEDICATION DONATE VOLUNTEER

Information Packages

Information Packages of City Land Proposed for Parkland Dedication

The following links lead to information packages. Each link to Community Planning Area (CPA) provides a PDF file (for viewing online, printing or downloading) containing an information table and maps of the City-owned sites currently proposed for Parkland Dedication in that CPA. There are also map packages of major canyon park areas (bottom). Please note that all maps are designed to be viewed on a computer (you can zoom in to each site to see the land cover) but can also be printed on paper. Review of these PDF information packages can be done together with a virtual 3-D tour using the free Google Earth software program. Instructions for downloading and using free Google Earth to review proposed areas are also available [here](#).

NOTE: The list of proposed land is subject to change throughout the public review process. Please check back here periodically for the most current information.

City Area (Summary Materials)

- ▶ Background & Status
 - ▶ Summary
 - ▶ News
- ▶ Proposed Lands for Parkland Dedication
 - Public Information Packages
 - Take a 3-D Park Tour Using Free Google Earth
- ▶ Support
 - ▶ Notify Me
 - ▶ Send a Letter

Results By Community Planning Area

UPDATED 10-10-12 WITH DEPT. REVIEW

B

Black Mountain Ranch (No Recognized Group) 1,094.09 acres reviewed (courtesy) by Rancho Penasquitos 3-7-12.

C

Carmel Mountain Ranch 103.01 acres approved by Planning Group 08-08-12.

Carmel Valley 575.31 acres approved by Planning Group 12-15-11.

City Heights 75.51 acres approved by Planning Group 10-03-11.

Clairemont Mesa 27.26 acres approved by Planning Group 07-17-12.

College Area 1.05 acres approved by Planning Group 10-12-11.

D

Del Mar Mesa 348.3 acres approved by Planning Group 01-12-12.

E

East Elliott (No Recognized Group) 600.76 acres approved by Mission Trails Regional Park CAC (expansion area) 01-03-12. [Click for Support Documentation.](#)

Eastern Areas (Mid-City) 5.41 acres (plus addition of 166.59 acres of land with ambiguous dedication status) approved by Planning Group on 4-10-12.

Encanto 15.79 acres approved by Planning Group 05-21-12.

F

Fairbanks Ranch Country Club (No Recognized Group) 578.97 acres approved by Carmel Valley 12-15-12. [Click for Support Documentation.](#)

G

Greater Golden Hill 0.15 acres approved by Planning Group 07-11-12.

K

Kensington-Talmadge 11.81 acres approved by Planning Group 04-11-12.

L

La Jolla 15.43 acres approved by Planning Group 11-03-11.

Linda Vista 18.26 acres approved by Town Council 11-17-11.

▶ Background & Status

- ▶ Summary
- ▶ News

▶ **City Land Proposed for Dedication****Planning Group Info
(Public Review Process)**

Take a 3-D Land Tour Using
Free Google Earth

▶ Support

- ▶ Notify Me
- ▶ Send a Letter
- ▶ Volunteer
- ▶ Donate

Planning Group Information Packages (& Other Info)

Information Packages of City Land Proposed for Dedication

The following links lead to information packages. Each link to Community Planning Area (CPA) provides a PDF file (for viewing online, printing or downloading) containing an information table and maps of the City-owned sites currently proposed for dedication in that CPA. There are also map packages of major canyon park areas (bottom). Please note that all maps are designed to be viewed on a computer (you can zoom in to each site to see the land cover) but can also be printed on paper. Review of these PDF information packages can be done together with a virtual 3-D tour using the free Google Earth software program. Instructions for downloading and using free Google Earth to review proposed areas are also available [here](#).

NOTE: The list of City land proposed for dedication is subject to change throughout the public review process. Please check back here periodically for the most current information.

Most Current Information (Updated 10.16.12)

Use the two tools below to review the most current information on dedication approval status.

1. [Sites Not Cleared for Dedication \(Summary and Site List - PDF file\)](#).
2. [Online Google Earth Viewer](#). Click the link to fly around and view sites and their dedication approval status using Google Earth (no need to install any software). Click on individual sites to see specific information, including dept. rationale for not dedicating.

Summary Materials

[SUMMARY - Public Review Status Table & Pie Charts](#) (Updated 10-10-12)

[City-Wide Proposed Areas - Map and Tables](#)


Results By Council District

[District 1](#) (updated 10.10.12)

[District 2](#)

[District 3](#)



An aerial photograph of a residential neighborhood. A specific area is highlighted in red and green. A white arrow points to the right in the upper right corner. A 'Google earth' logo and 'Terms of Use' link are visible in the bottom right corner of the image.

CLEAR. SITE 642

CLEAR. SITE 642

Site Code	R637RU
Common Name	CLEAR. SITE 642
Approx. Acres	0.234273
Commtly Planning Area	CITY HEIGHTS
Current Designation	OPEN SPACE, DESIG
Managing City Dept.	PARK AND RECREATION
Possible PUD Fund?	N
SDCL Notes	Part of contiguous, accessible canyon open space
Plan. Group Decision	Approved
Dept Rationale	Isolated From Other Designated or Dedicated Park Land or the MHPA
PGvsDEPT_101512	Yes - Isolated

Public Review Process

1. Internal City Review & Communications

- ✓ Park and Recreation Dept. & Board of Directors, June 2011
- ✓ Park & Rec. Dept. Open Space Division Review Aug./Sept. 2011
- ✓ Park & Rec. Dept. Forwards Proposal to READ & other Depts.
Recommends 10,699 acres pending READ & other Dept. review
- ✓ **8 City Council Members – Voiced support for State legislation**
- ✓ **Mayor's Office - Supported the State Legislation January 5, 2012**
- ✓ Three Open Space Canyon Advisory Committee Updates

2. Public Review (Aug 2011 – Sept 2012)

- ✓ Citizen Advisory Committees
- ✓ Community Planning Groups
- ✓ Community Parks Rec. Councils (Areas I and II)

3. **Reconcile READ recommendations with PG recommendations and Submit Detailed Report to City Council, Planning Groups and Park & Rec Board.**

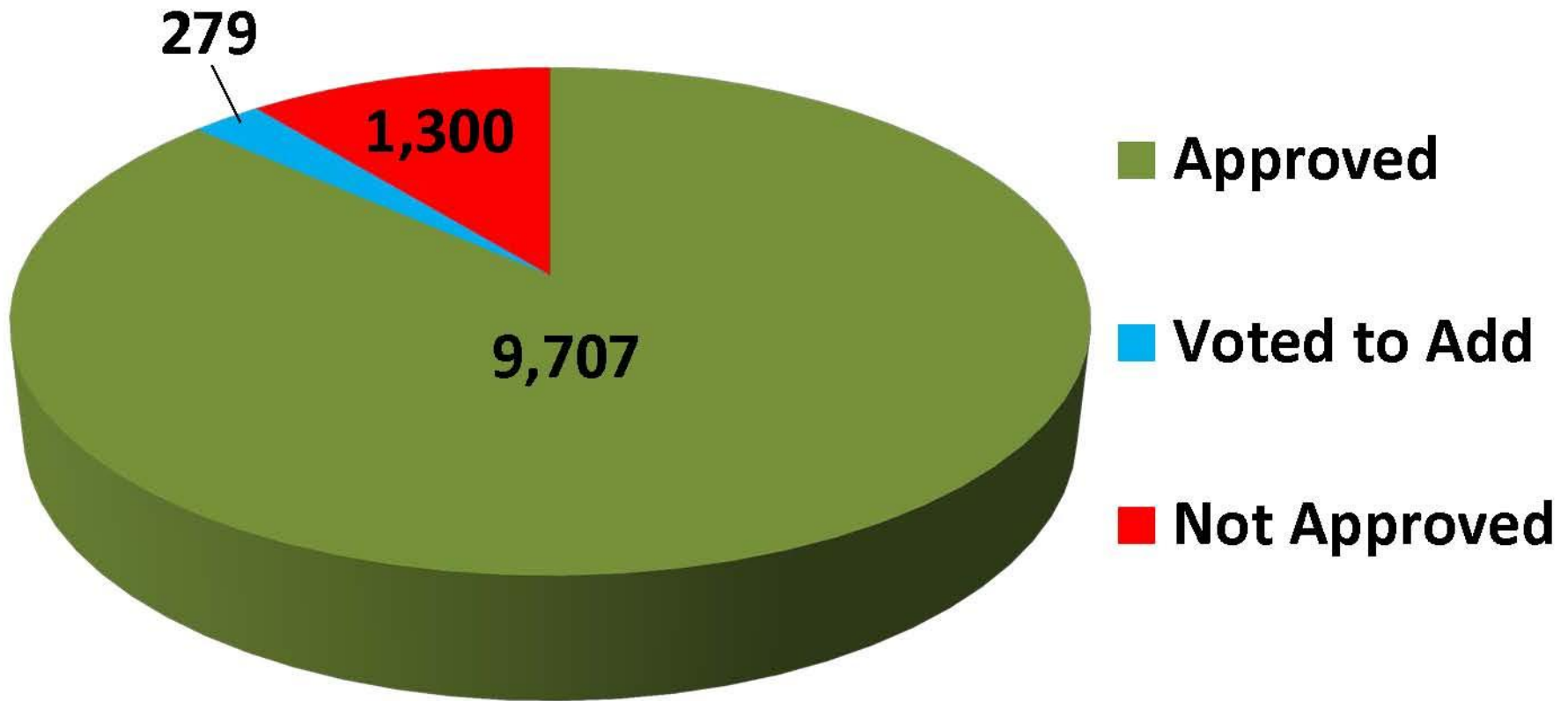
4. **Ratification by City Council (November 26 or 27?)**

Public Review Process

- **78 meetings** (PGs, CACs, MADs, Rec Councils, etc.)
- **1,600+** members of the public
- **1,700+** visits to info webpage



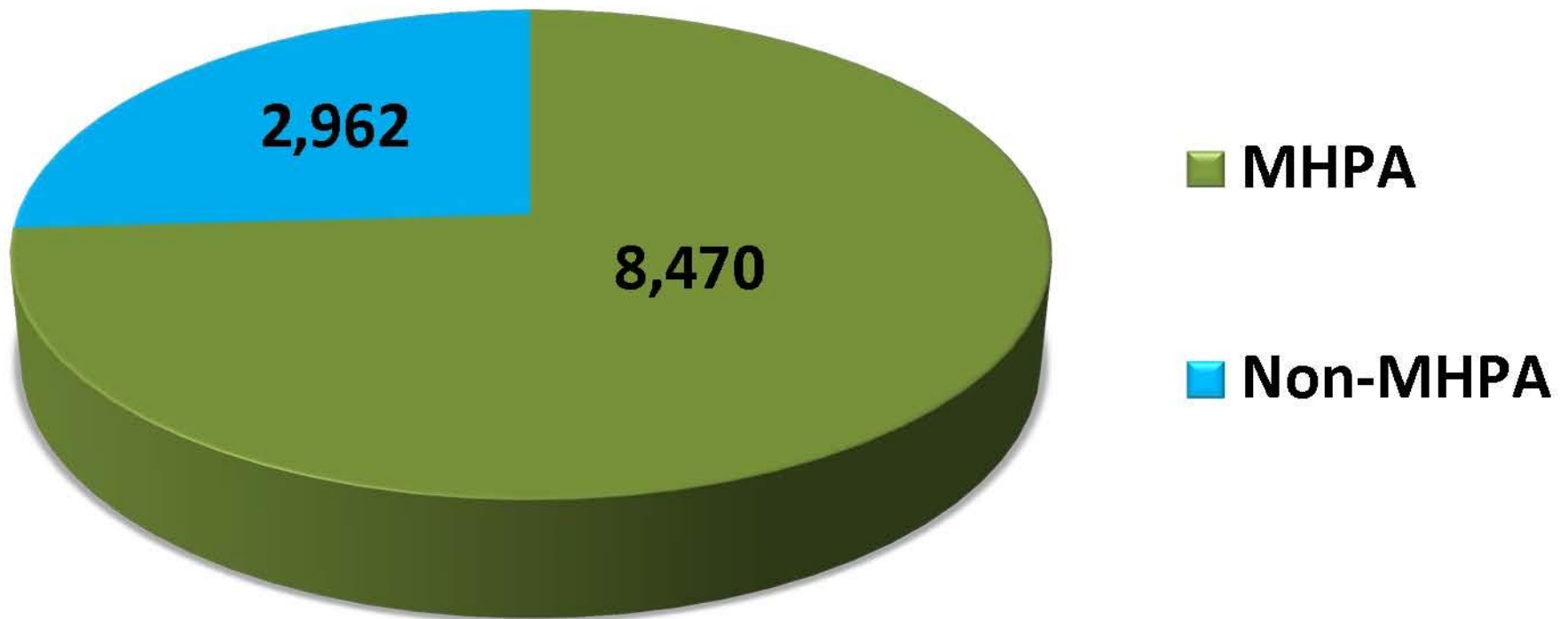
Planning Group Decisions





Proposed Acreage (11,432)

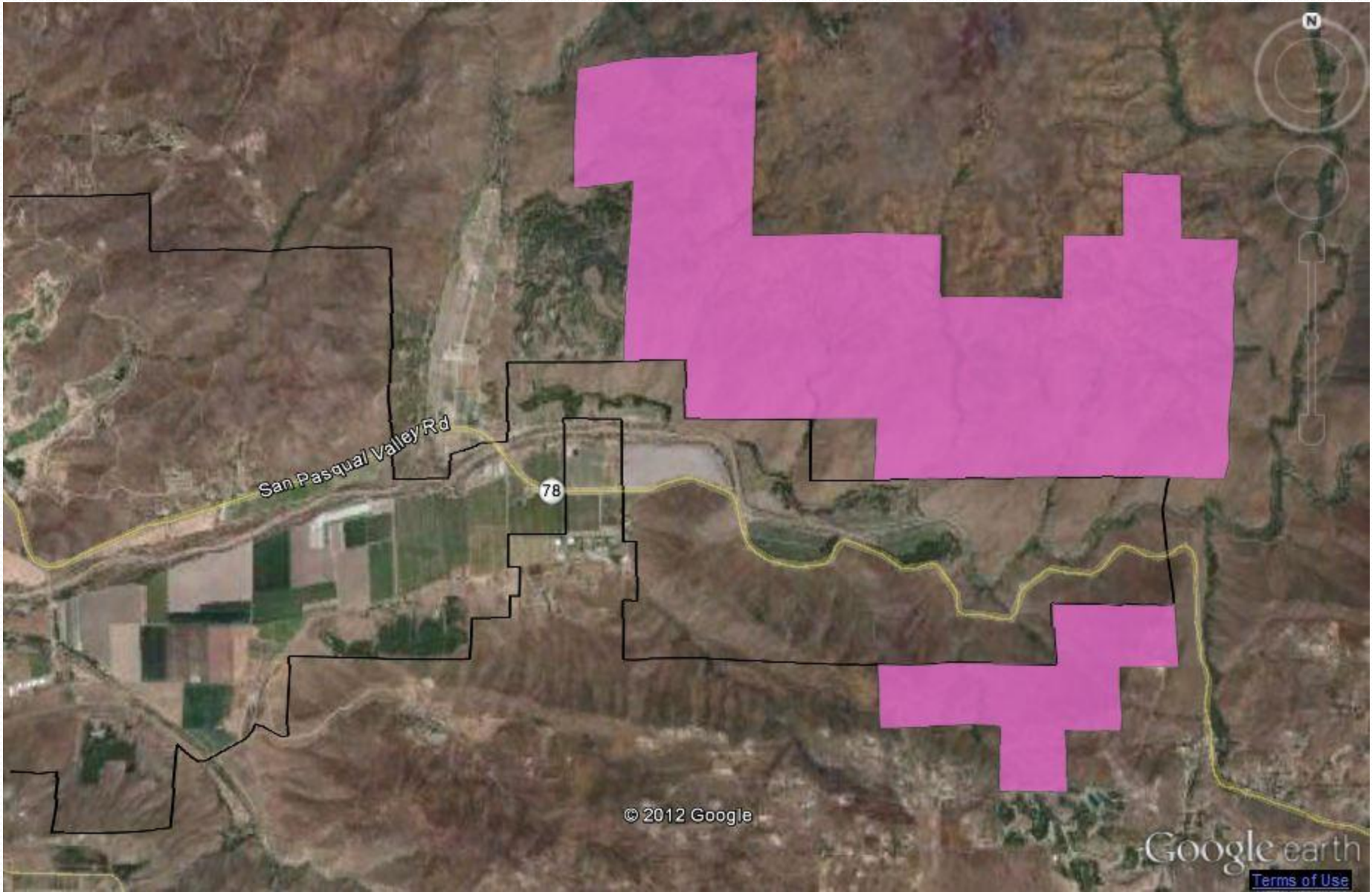
In Multi-Habitat Planning Area (MHPA)



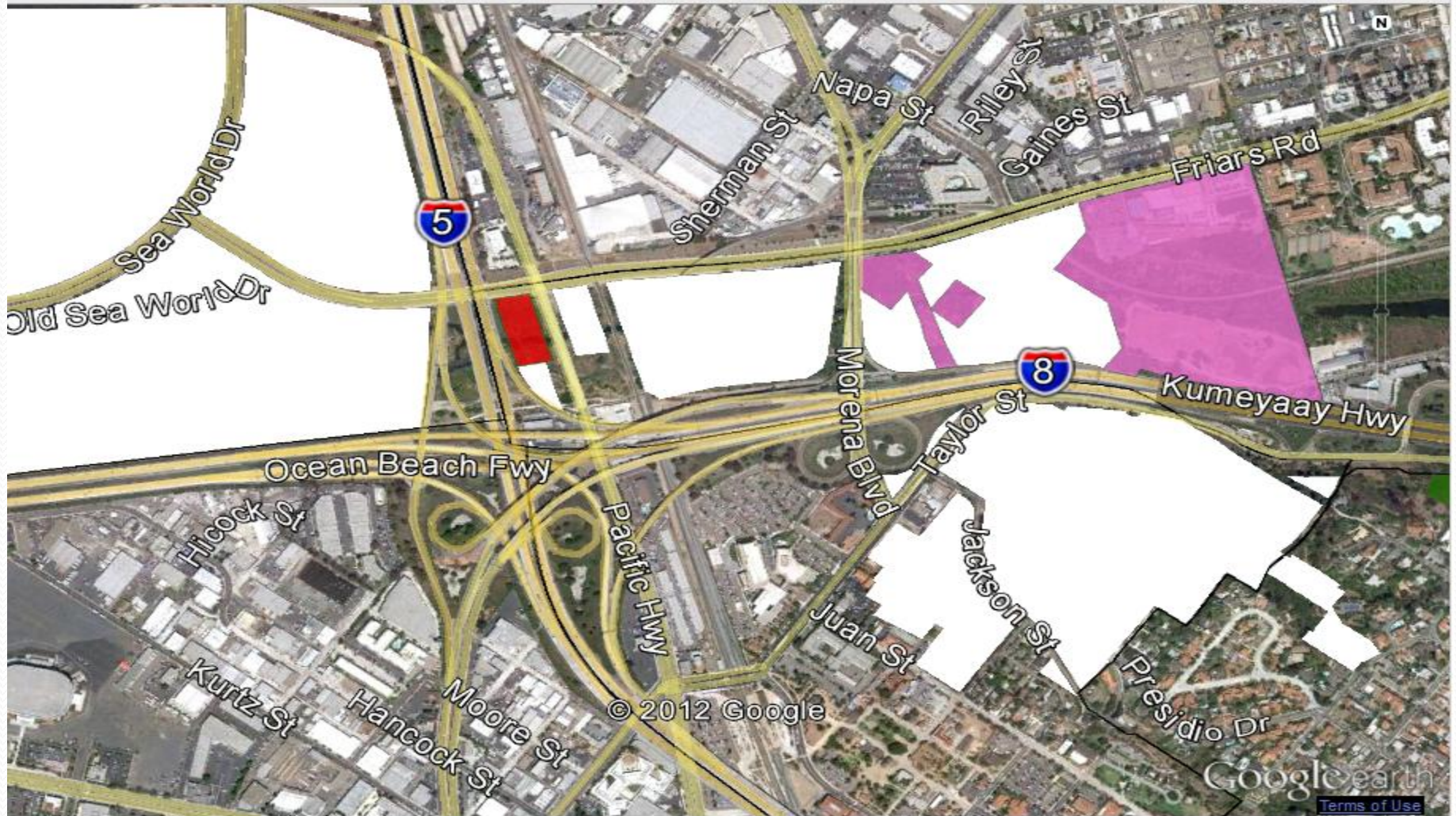
Not Cleared by Depts.

Dept. Rationale for Not Dedicating	Acres Not Cleared by Depts.	Acres NOT Approved by Planning Groups	Acres Approved by Planning Groups but Not Cleared by Depts.
Outside City Limits (portion of site C701RU only - San Pasqual Vly.)	2034	0	2034
Other Potential Uses (transportation, fire station, other agency, etc.)	1270.17	82.61	1187.56
Encroachments Requiring Resolution	646.95	130.05	516.9
Not Acquired for Park/Open Space	591.17	18.58	572.59
Other (No Parcel Number, Already Dedicated)	275.06	4.74	270.32
Isolated from Other Designated or Dedicated Park Land or MHPA	41.46	0.91	40.55
TOTAL	4858.81	236.89	4621.92

“Outside City Limits” 2,034 acres



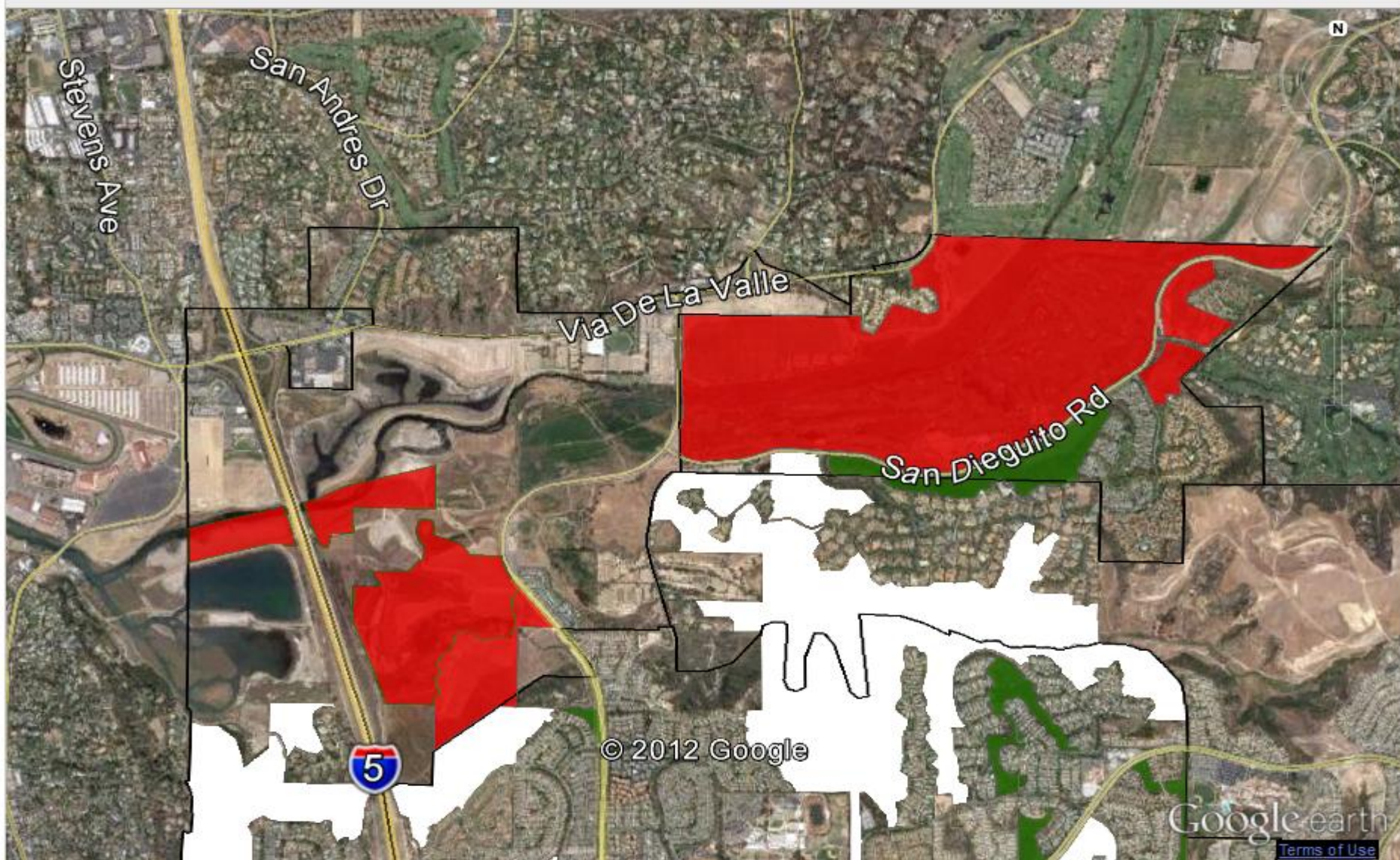
“Transportation...” Railroad



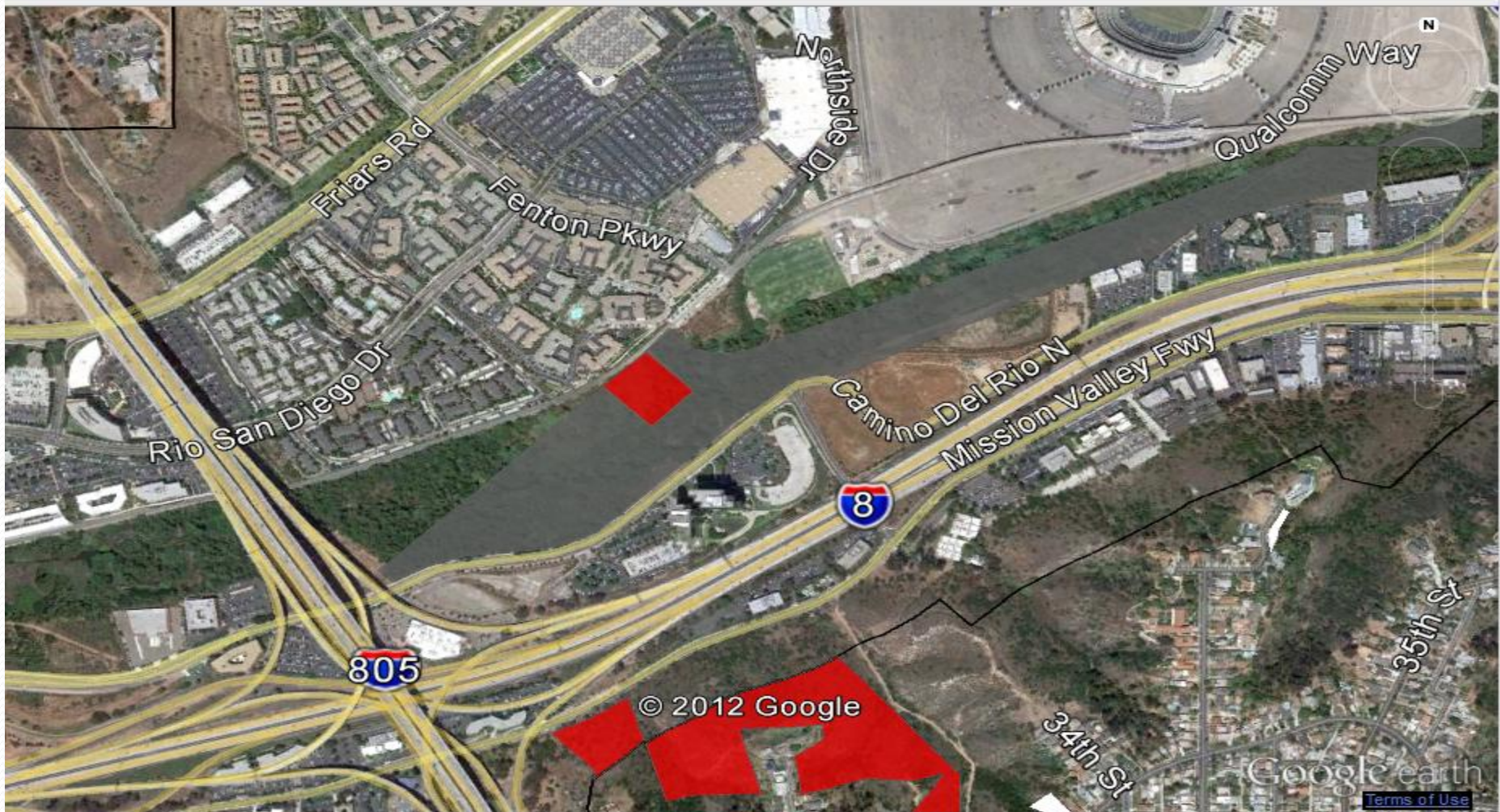
“Other Potential Uses” 1,270 acres



“Other Potential Uses”, Fairbanks Ranch READ 105 acres + Park & Rec. 47 acres

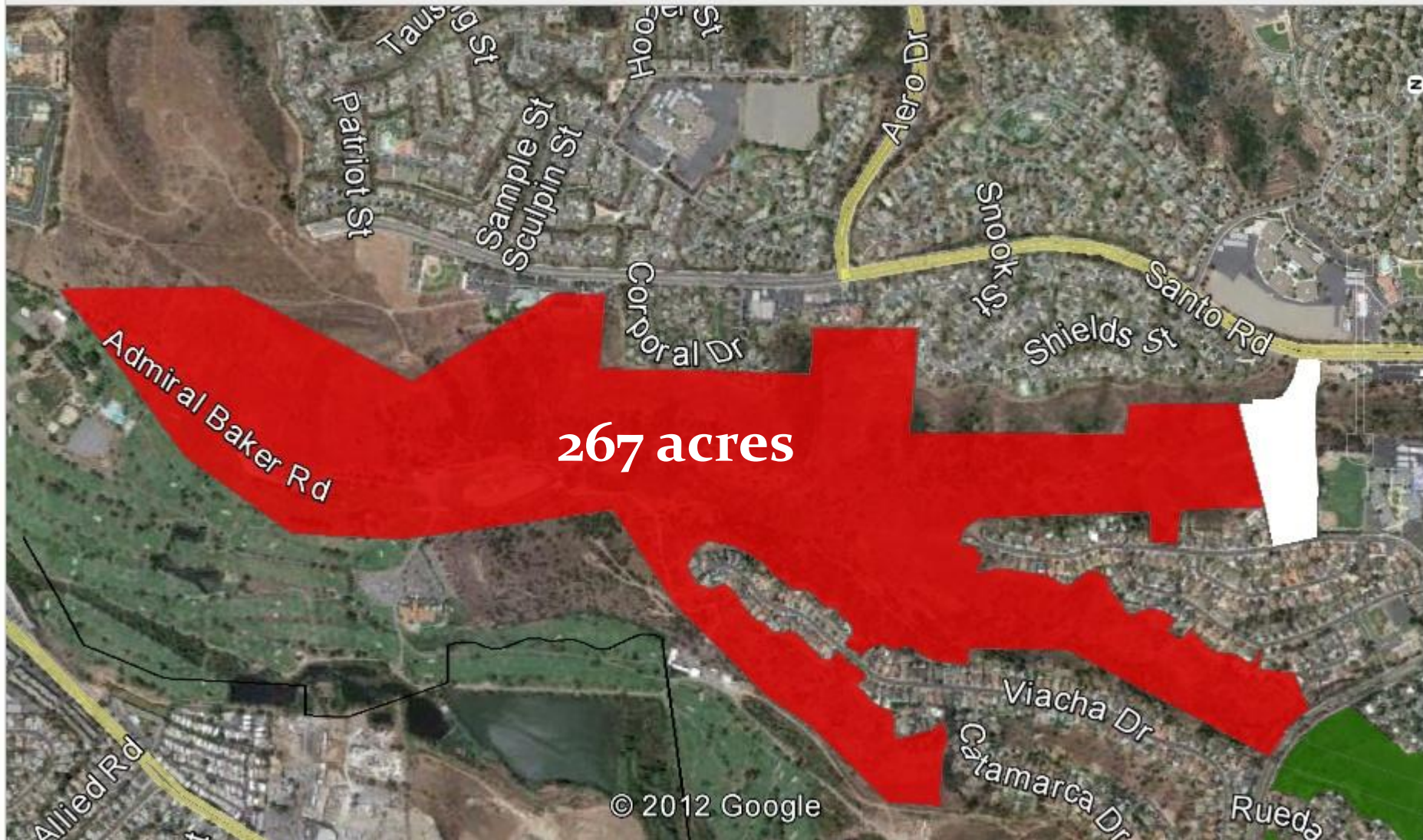


“Other Potential Uses” SD River Flood Channel, Park & Rec. Property 2.35 acres



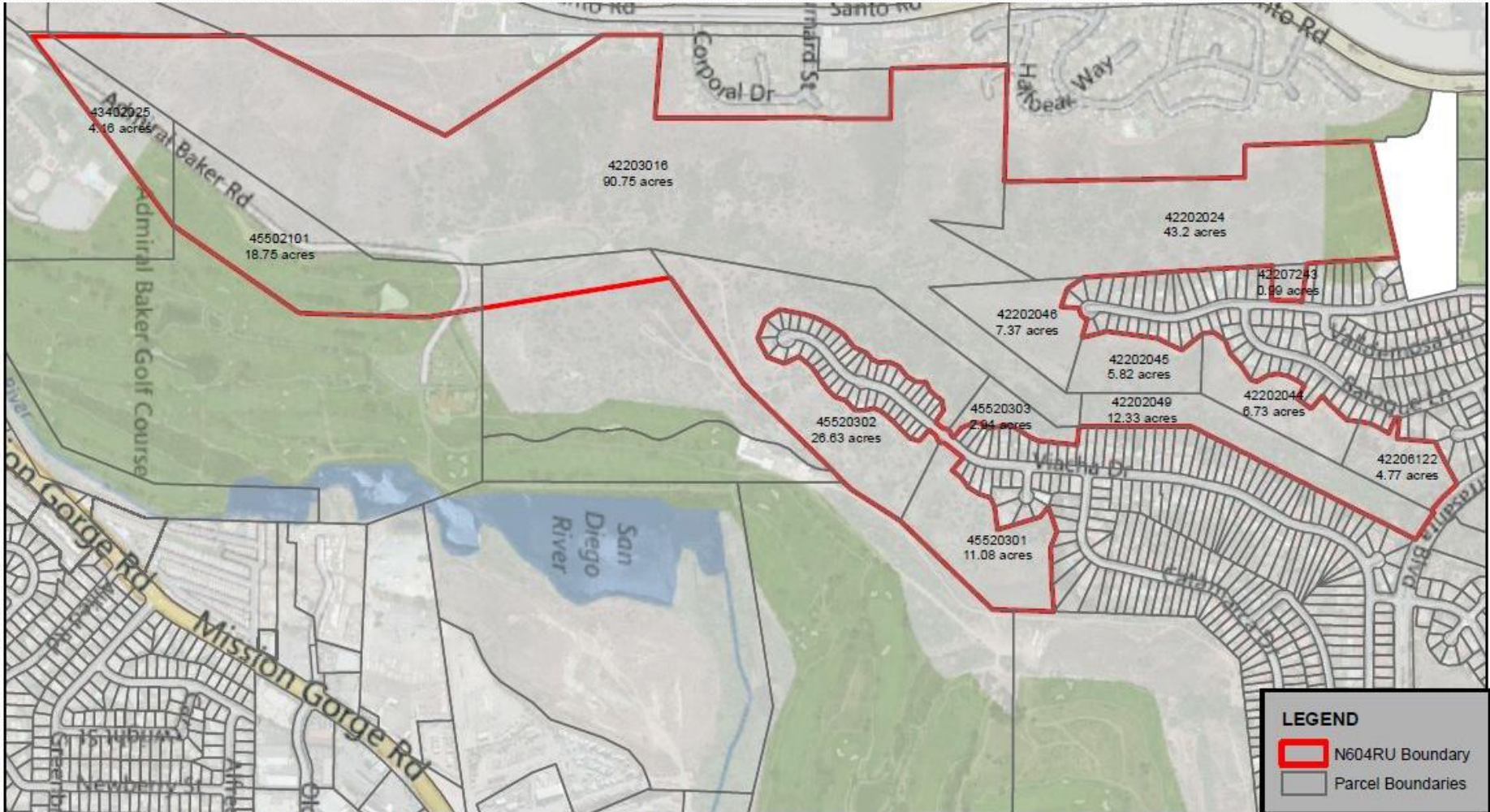
“Encroachments Requiring Resolution”

647 acres



“Encroachments Requiring Resolution”

647 acres



Site N604RU "Tierrasanta O/S" (aka Rueda Canyon - 266.57 Acres)

Site Proposed for Dedication Approved by Planning Group
BUT NOT CLEARED for Dedication by City Depts. Due to
"Encroachment Requiring Resolution".



15+ acres, READ Managed, Not reviewed



“Other (No Parcel, Already Dedicated, etc.)”

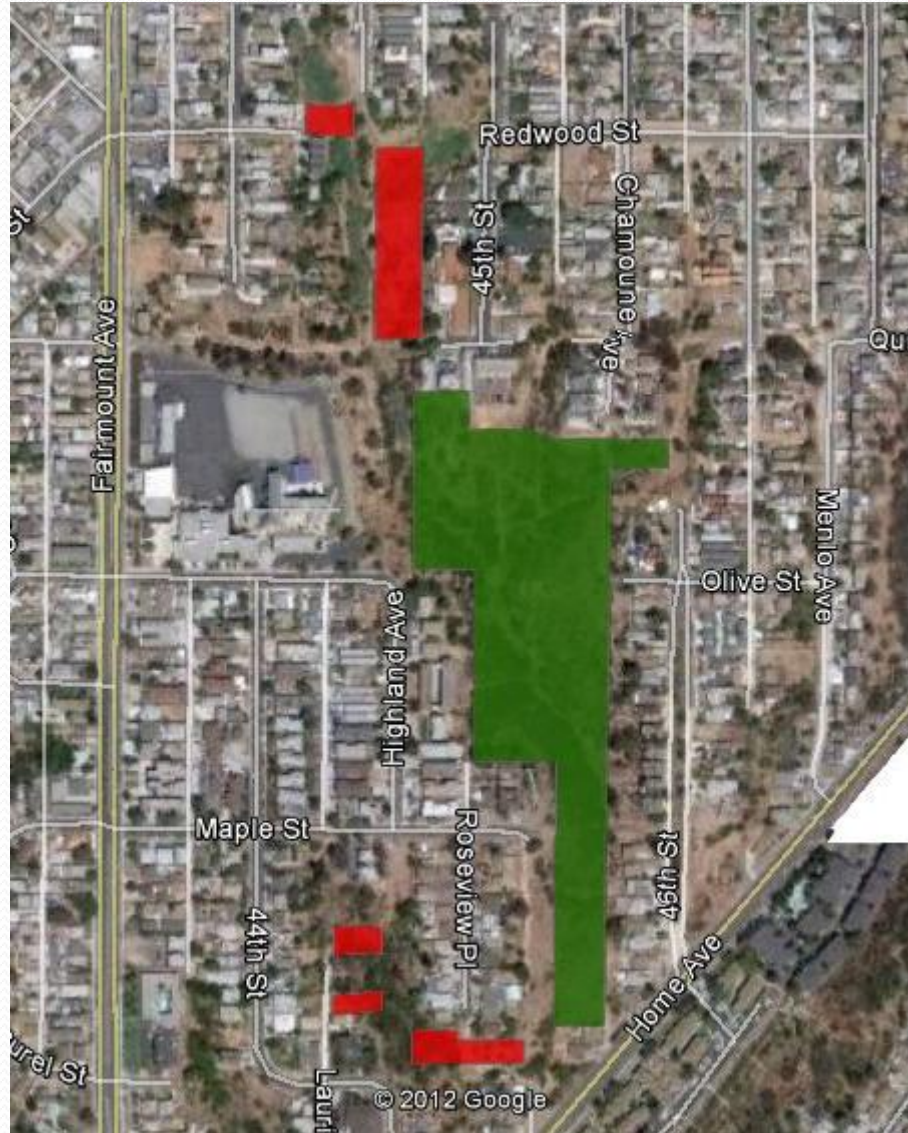
275 acres

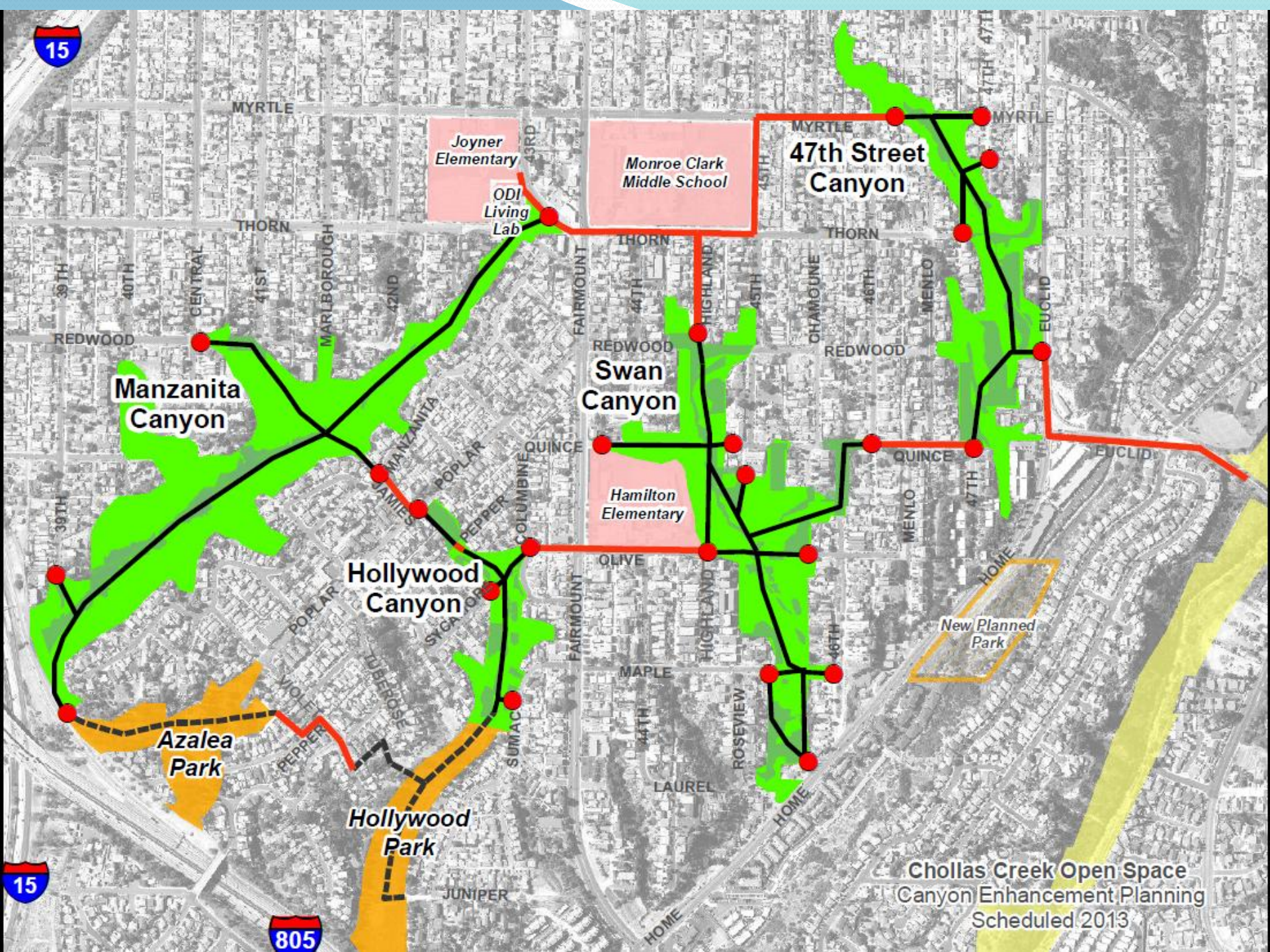




“Isolated from Other Des/Ded OS or MHPA”

41 acres





Joyner
Elementary

Monroe Clark
Middle School

Hamilton
Elementary

47th Street
Canyon

Manzanita
Canyon

Swan
Canyon

Hollywood
Canyon

Azalea
Park

Hollywood
Park

New Planned
Park

Chollas Creek Open Space
Canyon Enhancement Planning
Scheduled 2013

An aerial photograph of Los Angeles, showing a dense urban grid with various shades of green, brown, and grey. The city's layout is clearly visible, with major roads and freeways cutting through the landscape.

Los Angeles

"No city regrets its acquisition of parks, but many cities regret their failure to act in time."

John Nolen (1908)

San Diego



Data SIO, NOAA, U.S. Navy, NGA, GEBCO

**San Diego Canyonlands
thanks you for your LEADERSHIP
in conserving our wonderful
Canyons, Open Spaces & Parklands**

*Mayor Sanders
Senator Christine Kehoe
City Council Members
Park & Recreation Dept. & Board
Open Space Division
Community Planning Groups
Citizen Advisory Committees
Recreation Councils*