



THE CITY OF SAN DIEGO

Presentation to Park & Recreation Board

Success in Connecting Parkland and MADs to Recycled Water

Jennifer Casamassima

Program Manager, Public Utilities Department

November 20, 2014





Recycled Water Service to Park & Recreation Department

Meters Serving Parks, Open Space and Street Medians, includes Maintenance Assessment Districts

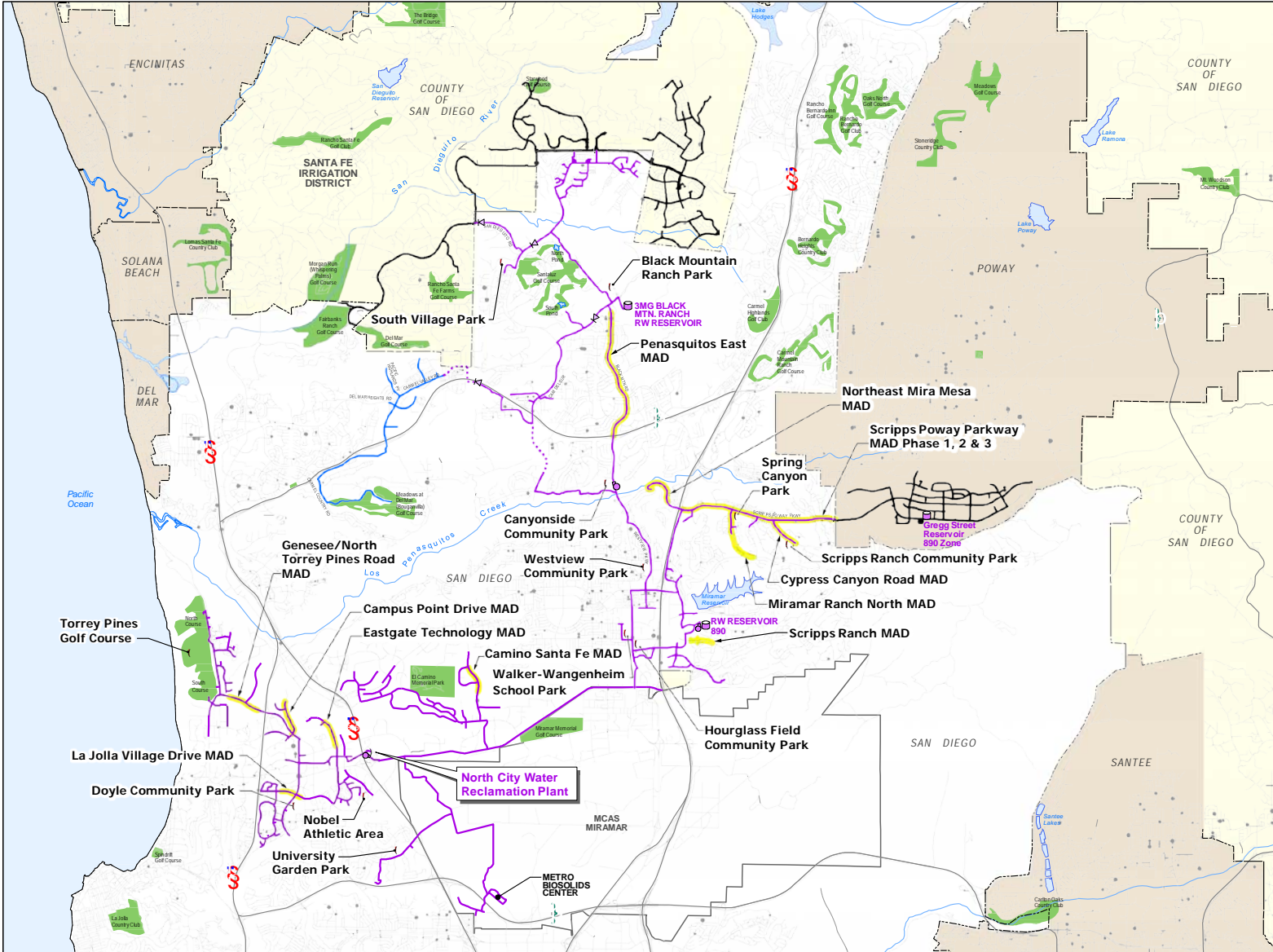
CY 2007 – 20 recycled meters

- potable water savings - 627.8 acre-feet per year (AFY)
- Usage ranked P&R as #4 of Top 10 retail recycled water customers

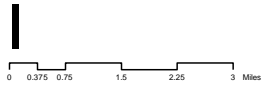
CY 2013 - 71 recycled meters

- potable water savings – 932.3 AFY
- Usage ranked P&R as #1 of Top 10 retail recycled water customers

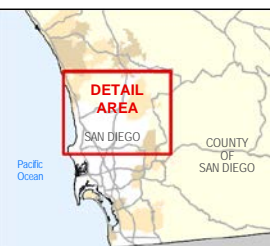
As of September 2014 – 84 recycled meters, a 320% increase in recycled water connections since 2007



THIS MAP IS PROVIDED WITHOUT WARRANTY OF ANY KIND, EITHER EXPRESS OR IMPLIED, INCLUDING BUT NOT LIMITED TO, THE IMPLIED WARRANTIES OF MERCHANTABILITY AND FITNESS FOR A PARTICULAR PURPOSE.
 Copyright SanGIS. All Rights Reserved.
 This product may contain information from the SANDAG Regional Information System that cannot be reproduced without the written permission of SANDAG.
 This product may contain information that has been reproduced with permission granted by Thomas Brothers Maps.
 Every reasonable effort has been made to assure the accuracy of this map. However, neither the SanGIS participants nor the City of San Diego assume any liability arising from its use.



LEGEND	
(Symbol)	WATER RECLAMATION FACILITY
(Symbol)	EXISTING RW PUMP STATION
(Symbol)	EXISTING RW RESERVOIR
(Symbol)	EXISTING RW PRS
(Symbol)	POINT OF CONNECTION
(Symbol)	SITE SERVED WITH RECYCLED WATER MANAGED BY PARK & RECREATION
(Symbol)	CITY BOUNDARY
(Symbol)	EXISTING RECYCLED WATER PIPELINES (CITY OF SAN DIEGO)
(Symbol)	EXISTING RECYCLED WATER PIPELINES CURRENTLY CHARGED WITH POTABLE WATER
(Symbol)	PLANNED RECYCLED WATER PIPELINES (CITY OF SAN DIEGO)
(Symbol)	EXISTING RECYCLED WATER PIPELINES (OMWD & POWAY)
(Symbol)	MAINTENANCE ASSESSMENT DISTRICT CONVERTED TO RECYCLED WATER
(Symbol)	GOLF COURSE/LARGE TURF AREA



VICINITY MAP No Scale



Long-Range Planning & Water Resources Division
**Northern Service Area
 Parkland & MAD
 Irrigation Retrofits**

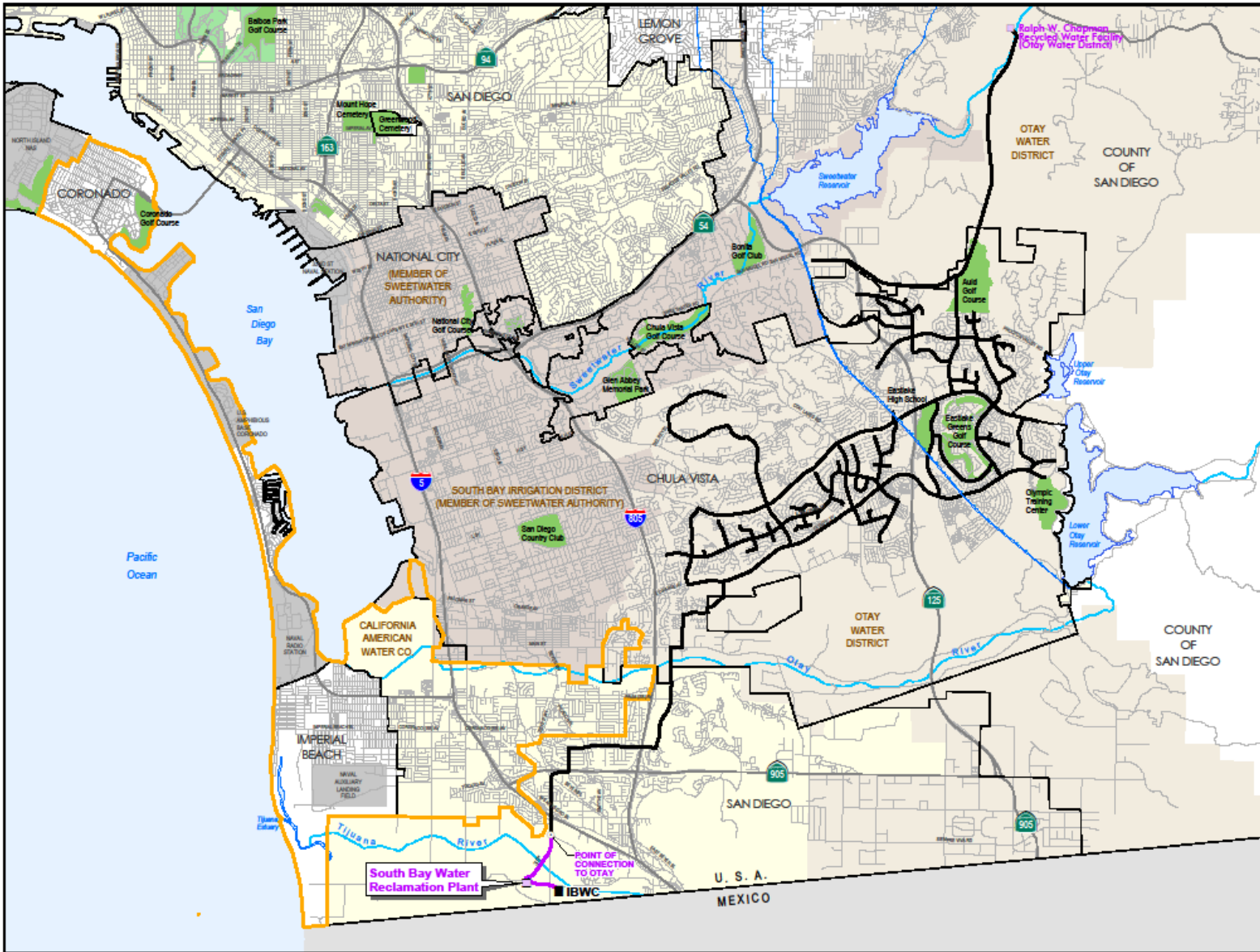




Planned Irrigation Retrofit Projects

Anticipated Potable Water Savings - 23.4 AFY

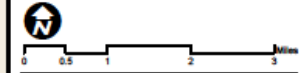
- Penasquitos Creek Park
- Park Village Maintenance Assessment District
- San Dieguito Rd Maintenance Assessment District
- Carmel Valley Rd Maintenance Assessment District



THIS MAP IS PROVIDED WITHOUT WARRANTY OF ANY KIND, EITHER EXPRESS OR IMPLIED, INCLUDING BUT NOT LIMITED TO, THE IMPLIED WARRANTIES OF MERCHANTABILITY AND FITNESS FOR A PARTICULAR PURPOSE.

This product may contain information from the SANDAG Regional Information System that cannot be reproduced without the written permission of SANDAG.

Every reasonable effort has been made to ensure the accuracy of this map. However, neither the City of San Diego nor its employees assume any liability arising from its use.



LEGEND

- WATER RECLAMATION FACILITY
- POINT OF CONNECTION
- CITY BOUNDARY
- EXISTING RECYCLED WATER PIPELINES (CITY OF SAN DIEGO)
- EXISTING RECYCLED WATER PIPELINES (OTAY WATER DISTRICT)
- CWA AQUEDUCTS
- GOLF COURSE/LARGE TURF AREA
- CITY OF SAN DIEGO PUBLIC UTILITIES SERVICE AREA
- OTAY WATER DISTRICT SERVICE AREA
- SWEETWATER AUTHORITY SERVICE AREA
- CAL-AMERICAN WATER CO SERVICE AREA



South Bay Recycled Water System



Website www.sandiego.gov/water/recycled

Questions?

Jennifer Casamassima

jcasamassima@sandiego.gov

619 533-7402