

# The Chollas Creek Regional Park

A Unique and Special Park for One San Diego



March 19<sup>th</sup>, 2015  
Park and Recreation Board

Leslie Reynolds, Executive Director  
Vicki Estrada, Board Member

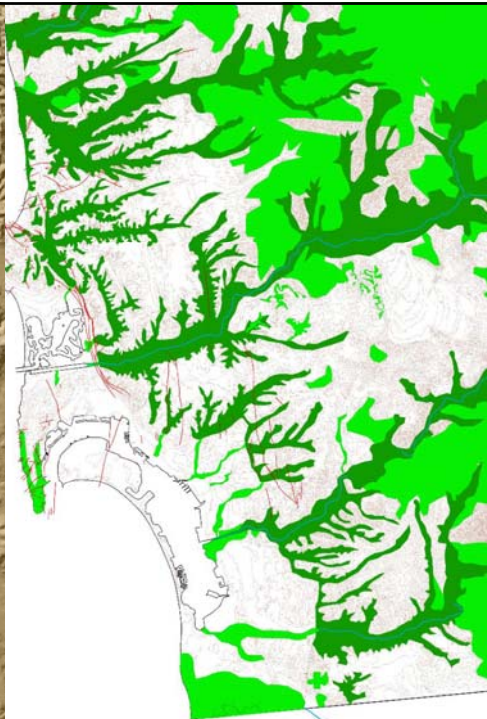
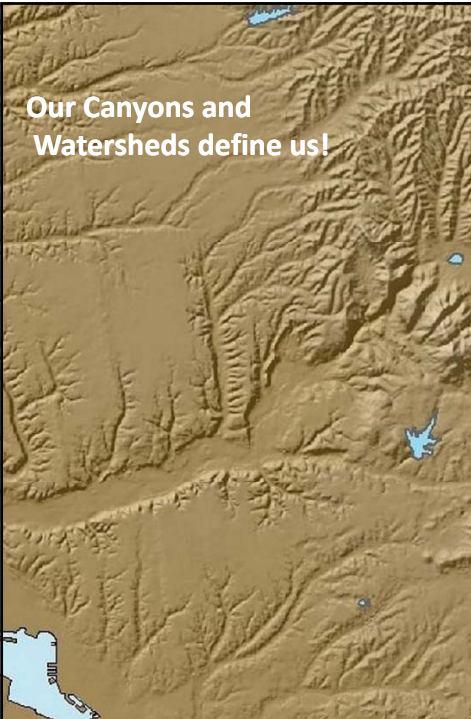


Groundwork  
SAN DIEGO  
Chollas Creek

## Who We Are

Non-profit environmental organization  
Community-based Board of Directors  
Affiliate of Groundwork USA  
Manager, Chollas Creek Watershed

**Our Canyons and Watersheds define us!**



**The Pueblo Watershed (and the Chollas Watershed within it)**



# Current Park Access for Children of Color Living in Poverty with No Access to a Car

## THE REGIONAL PARK WOULD INCREASE PARK ACCESS

**78** Assembly District Number

**Park Access:**

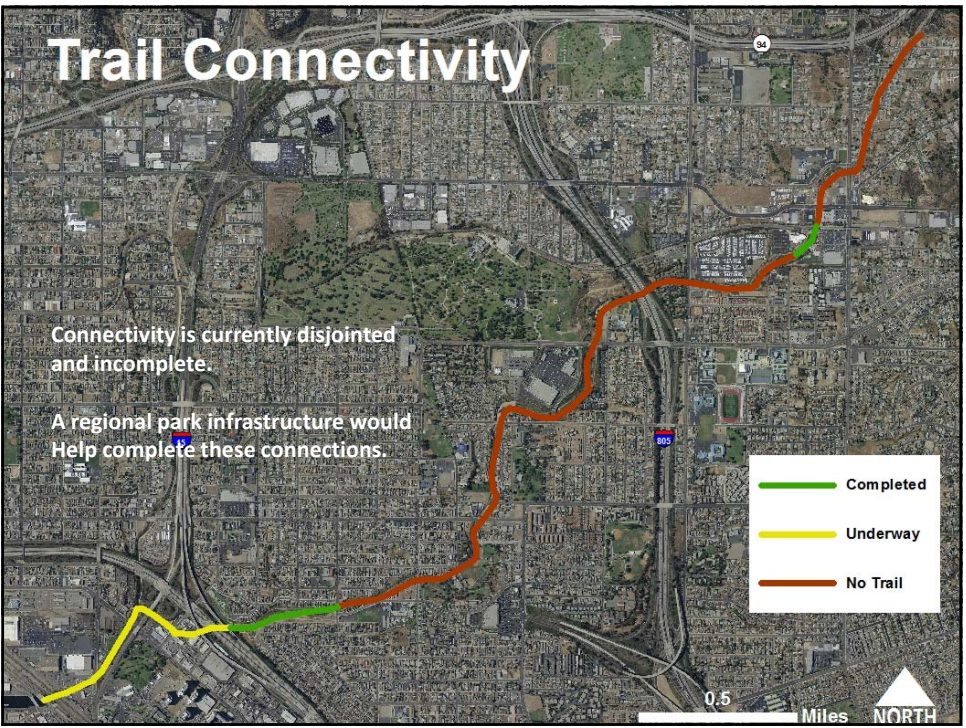
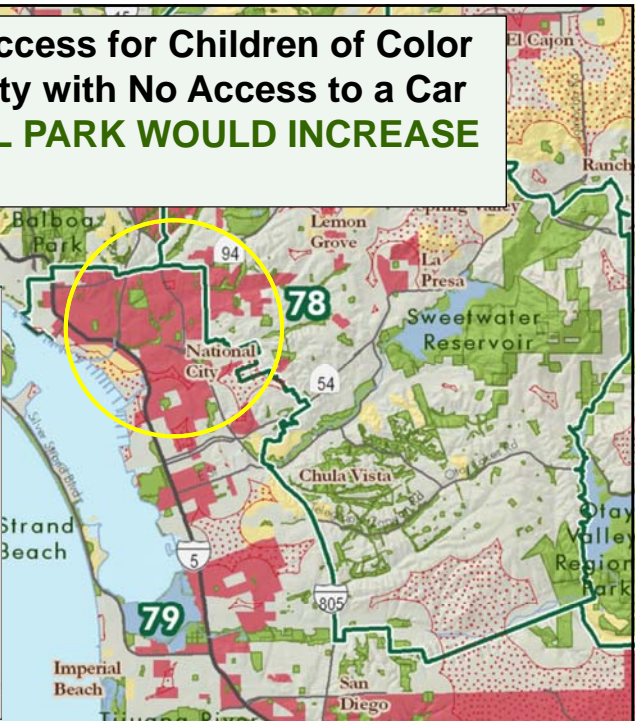
- Existing Park/Green Space\*
- Over 1/2 from a Park

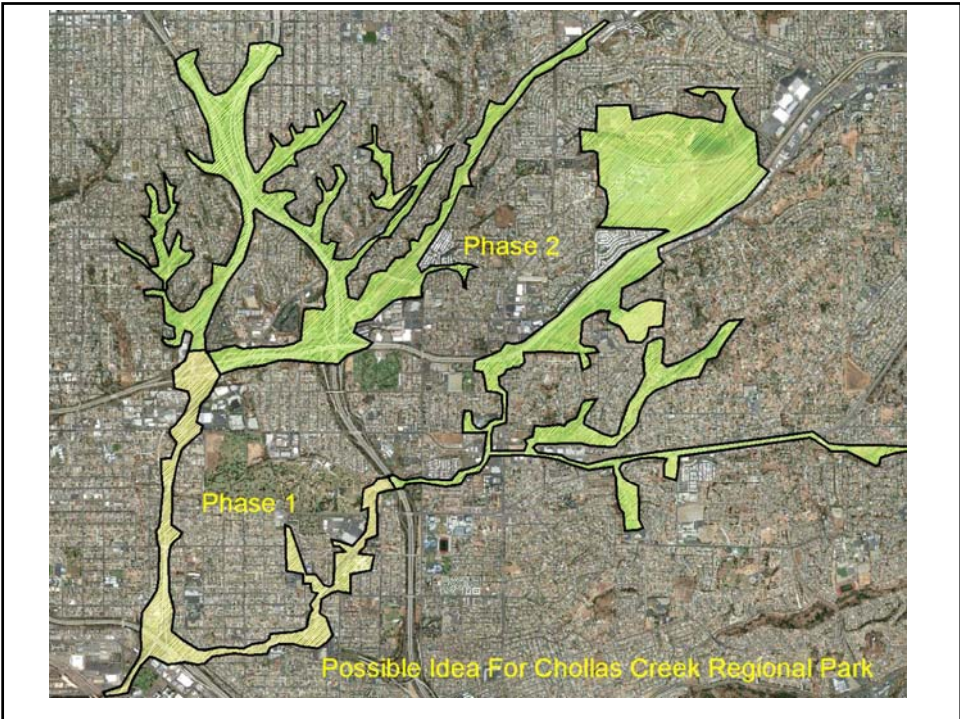
**Block group status, in relation to San Diego County Averages, for:**

- Youth
- Race/Ethnicity
- Poverty
- Lack of Car Access

- Exceeds San Diego County Average
- Below San Diego County Average
- Within San Diego County Average

\*All parks/green space are shown, including forest service, bureau of land management and lands with no/restricted public access.





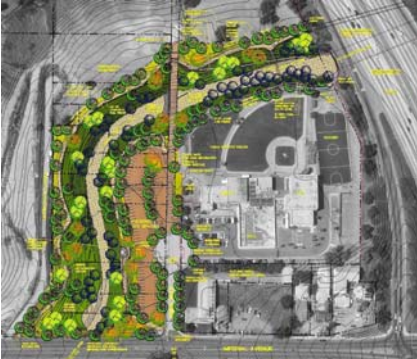
**Some of the Current and Proposed Projects within the Regional Park Area**



**Chollas Creek Bayshore Bikeway Trail**



**Southcrest Park**



**Jackie Robinson YMCA**



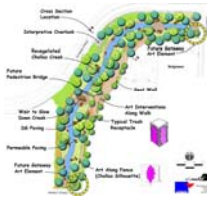
**Chollas Creek Crossing**



Chollas Lake and South Chollas



Jacobs Center - Activating the Creek



Earthlab

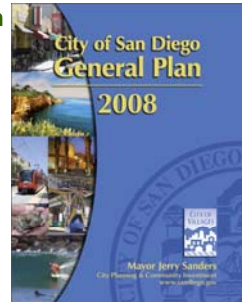


KSON Tower Park Site

## From the General Plan

### Guidelines

- Serves regional resident and/or visitor population
- Developed amenities should not impair the distinctive features or resources
- Provides habitat and resource protection
- Development for recreation use is typically controlled by a master plan



### Typical Components

- Located at the site of distinctive scenic, natural, historical or cultural features
- Resource-based Parks such as Balboa Park, Mission Bay Park, and Sunset Cliffs Natural park
- Regional Parks such as Mission Bay and Otay Valley

## From the General Plan

### F. Open Space Lands and Resource-Based Parks

#### Goals

- ◆ An open space and resource-based park system that provides for the preservation and management of natural resources, enhancement of outdoor recreation opportunities, and protection of the public health and safety.
- ◆ Preservation of the natural terrain and drainage systems of San Diego's open space lands and resource-based parks.
- ◆ A system of pedestrian, bicycle, and equestrian paths linking communities, neighborhoods, parks, and the open space system.

- RE-F-6. Encourage the planning and coordination of river parks to provide public recreational opportunities, protect natural resources, and enhance community character.
- RE-F-7. Create or enhance open space multi-use trails to accommodate, where appropriate, pedestrians/hikers, bicyclists, and equestrians.
- a. Develop, adopt and maintain updates of a citywide Trails Master Plan or Parks Master Plan which incorporates trails master planning to guide the provision of and enhancement of open space multi-purpose trails.
  - b. Enhance public access to public open space by clearly identifying trailheads and trail alignments which are consistent with MSCP preservation goals.
  - c. Locate canyon and other open space trails to take advantage of existing pathways and maintenance easements where possible and appropriate.

Median Market Value PSF by Walking Distance from Park, 2011 and % change from 2003					
Walking Distance from the Park	Central Park West		Central Park East		
	2011 \$ psf	% change from 2003	2011 \$ psf	% change from 2003	
Within 5 minutes	\$474	73%	\$801	44%	
5 to 10 minutes away	\$423	71%	\$714	50%	
Over 10 minutes	N/A	N/A	\$1,026	96%	
Prospect Park Highline - Hudson Park to Union Square					
Walking Distance from the Park	2011 \$ psf	% change from 2003	2011 \$ psf	% change from 2003	
Within 5 minutes	\$305	410%	\$301	103%	
5 to 10 minutes away	\$313	421%	\$144	19%	
Over 10 minutes	\$142	470%	\$300	33%	

#### Economic Value of Urban Parks

- Driving Economies
- Significant Savings



#### Educational Value

- Environmental Education
- To Protect and Conserve



#### Environmental Value

- Healthy Habitats
- Reducing Carbon Footprints
- Measurable Benefits



#### Community Value

- A Sense of Pride
- Urban Renewal



#### Public Health Value

- Healthy Parks Equal Healthy People
- People Breathe Easier

## COMMUNITY VISION

Encanto Neighborhoods residents envision their community as a scenic, vibrant and healthy community recognized as a jewel in San Diego. The Encanto Neighborhoods will be known for their panoramic views, unique arts and culture, night life and entertainment, employment, education, and housing opportunities. The community will enjoy new mixed-use transit-oriented development and a diversity of housing types clustered close to the intermodal transit stations. Historic single family neighborhoods in the northern and eastern parts of the community enjoy a semi-rural "country living in the city" atmosphere. The community will boast great parks and high-quality recreational facilities including multi-use trails along Chollas Creek, area canyons and other open spaces. The community will offer opportunities for high educational attainment and an overall unmatched quality of life and environment for children to learn, play and grow, nurturing the next generation of great community leaders.

## GUIDING PRINCIPLES

1. Celebrate Encanto Neighborhoods' cultural diversity by fostering inclusive neighborhoods that are known as a destination for arts, culture, food and entertainment.
2. Maintain the overall dominant single-family character of the community while focusing new transit-oriented development at densities high enough to attract new investment and foster revitalization around the 62nd Street, Euclid Avenue, and 47th Street inter-modal transit stations as well as along key walkable, mixed-use, nodes on the Imperial Avenue and Market Street corridors.
3. Promote active living and healthy lifestyles by furthering access to trails and open spaces, creating walkable and safe neighborhoods, promoting fresh food choices and urban agriculture, and establishing community gardens.
4. Foster high educational attainment for the younger generations by creating additional educational and employment opportunities.
5. Enhance opportunities for neighborhood commerce and retail uses, encouraging well-paying employment-oriented uses and emphasizing creative enterprises.
6. Restore and enhance the open space network that is formed by parks, canyons, and Chollas Creek corridors.
7. Improve the community's streets and sidewalks, above ground and underground utilities, parks, and other public infrastructure in order to promote a safe and attractive public realm.
8. Create an environment of economic opportunity, and flexibility to adapt to changing circumstances.
9. Develop sustainable practices for new development, mobility, water, and energy conservation, in order to reduce greenhouse gas emissions.

## GOALS

1. A sustainable park and recreation system that meets the needs of a variety of users such as children, the elderly, persons with disabilities, and the underserved teenage population
2. A comprehensive plan for pedestrian and bikeway connections between parks and open space lands within Encanto Neighborhoods as well as to surrounding communities
3. A comprehensive plan for open space system preservation and management of Chollas Creek and area canyons
4. Accessible bicycle and pedestrian trail corridors along Chollas Creek
5. A program to incentivize the provision of publicly accessible, but privately maintained open space as part of new development
6. Provision of expanded recreational opportunities through joint use or leasing of public and private facilities.

Encanto Neighborhoods.

Chollas Radio Canyon and the  
of Chollas Creek are recom-  
basis for an interconnected sys-  
along Chollas Creek and routes  
pes. Improved wayfinding sig-  
h as benches, shade structures,  
ative panels would enhance the  
enjoyment of nature, and could  
valency. A second trail system  
in Open Space can provide a  
community to Valencia Park El-

cemeteries provide valuable vi-  
environment. The approximate-  
Cemetery is not publicly owned  
ot identified as park land, but  
ual relief and other open space  
y's northwestern corner.

Open Space and Trail System. Place a kiosk at  
trailheads that has a map of how the canyon  
interfaces with Encanto Neighborhoods,  
and interpretive signs on the biological and  
scenic value of the open space system.

**P-RE-22:** Construct new trails within Encanto Neigh-  
borhoods' as shown on Figure 7-3 Open  
Space and Trail System.

**P-RE-23:** Provide trails with benches and overlook(s),  
where appropriate, to ensure that all resi-  
dents of the community can enjoy open  
space in Encanto Neighborhoods.

**P-RE-24:** Prepare a comprehensive management plan  
for the management and preservation of  
Chollas Creek open space system and area  
canyons.

**P-RE-25:** Prepare a comprehensive study analyzing  
Chollas Creek's outstanding, distinctive natu-  
ral, cultural or historic resources of a regional  
nature for consideration of designation as a  
Regional Park.

**P-RE-26:** Implement recommendations contained in  
the Chollas Creek Enhancement Plan and the  
Euclid+Market Land Use and Mobility Plan.

## and Resource-based Park

## The Chollas Creek Regional Park

### A Unique and Special Park for One San Diego

## Questions?

