



# REPORT

## THE CITY OF SAN DIEGO TO THE PARK AND RECREATION BOARD

---

DATE ISSUED: April 6, 2015

REPORT NO: 102

ATTENTION: Park and Recreation Board  
Agenda of April 16, 2015

SUBJECT: Linda Vista Community Park - General Development Plan Amendment to provide a skate park at the park.

### SUMMARY

Issue – Should the Park and Recreation Board approve the Linda Vista Community Park General Development Plan Amendment to provide a skate park at the park?

Director's Recommendation – Approve the Linda Vista Community Park General Development Plan Amendment to provide a skate park at the park.

Other Recommendations – The following groups have reviewed and considered the proposed project. Actions taken and recommendations made by these groups are listed under Discussion below.

Linda Vista Recreation Council  
Community Parks 1 Area Committee  
Design Review Committee

Fiscal Impact – The project has been funded by a \$3,000,000 grant from the California Department of Housing and Community Development (HCD) and a \$40,000 grant from the Tony Hawk Foundation. This \$3,040,000 budget provides for design and construction. Construction is anticipated to be complete in Fiscal Year 2017. The anticipated annual operational budget for personnel and non-personnel expenses for the skate park is estimated to be \$38,000.

Water and Energy Conservation Status – The proposed Linda Vista Skate Park will comply with all water and energy conservation guidelines contained in Council Policy 200-14.

Environmental Status - The City of San Diego as Lead Agency under CEQA has

April 6, 2015

submitted this project to Development Services for Environmental review and it has been determined this project is categorically exempt from CEQA pursuant to §15301 (a) Existing Facilities and §15303 New Construction or Conversion of Small Structures. A Notice of Exemption is being prepared pursuant to State CEQA Guidelines.

## BACKGROUND

This project provides design and construction of a new skate park facility within the existing Linda Vista Community Park in the Linda Vista Community in the City of San Diego (Council District 7). The skate park elements have been preliminarily described as being “small at and below grade” features mixed with “bowls”, “pipes”, “steps” and “rails”. Associated ADA path of travel improvements are included. The park is located in a fully-developed, urbanized setting, bounded by an existing residential neighborhood to the west.

The approximate area of the project is 34,000 square feet including surrounding landscaping. Associated accessibility upgrades to parking, path of travel and restrooms will also be included.

## DISCUSSION

On February 10, 2015 the Linda Vista Recreation Council voted to approve the Linda Vista Community Park General Development Plan Amendment (7-3-0) as it was presented.

On March 4, 2015 the Community Parks I Area Committee voted (10-0-2) to recommend approval of the Linda Vista Community Park General Development Plan Amendment as it was presented.

On March 11, 2015 the Design Review Committee voted (7-0-0) to recommend approval of the Linda Vista Community Park General Development Plan Amendment with the following recommendations. Each of these recommendations has been incorporated into the Plan with the exception of using some native trees to try to pull the feel of Tecolote Canyon into the park. The existing trees in the adjacent Tecolote Canyon are non-native Eucalyptus and prone to litter. These trees have been minimized within the skate park area. Native shrubs and ground covers have been included in the plant palette.


- Possibly raise the pedestrian bridge rail to 48” high.
- Carefully design the transition between the bridge rail and the skate park fence at the bridge abutments.
- Use warm tones in the concrete aggregate to lessen the reflective nature of natural colored concrete.
- Consider where portable toilets could go and the electrical power requirements for larger events/demonstrations at the skate park.

- Use some native trees to try to pull the feel of Tecolote Canyon into the park.
- Be mindful of tree litter within the skate areas. Select trees with little litter.
- Do not create small planting areas that are hard to irrigate and maintain.
- Use cobble large enough that it cannot be easily picked up or thrown.
- Consider arches at the top of the skate park perimeter fence to discourage climbing over the fence to enter the skate park when it is closed.

ALTERNATIVES

1. Approve the Linda Vista Community Park - General Development Plan Amendment presented.
2. Approve the Linda Vista Community Park - General Development Plan Amendment with modifications.
3. Do not approve the Linda Vista Community Park - General Development Plan Amendment.

Respectfully submitted,



Mark Nassar  
Deputy Director, AEP Division



Prepared by: Mark Calleran  
Project Manager, AEP Division

MC

cc: Council District 7



# Linda Vista Community Park General Development Plan Amendment Linda Vista Skatepark

**Park and Recreation Board Meeting**

**April 16, 2015**

Presented by:

**City of San Diego Public Works**

**Schmidt Design Group, Inc.**

**Site Design Group, Inc.**



## Presentation Agenda April 16, 2015

---

- **Introductions**
- **Overview of general park improvements.**
- **Detailed presentation on proposed Skate Park design features.**
- **Discussion and Park and Recreation Board approval.**

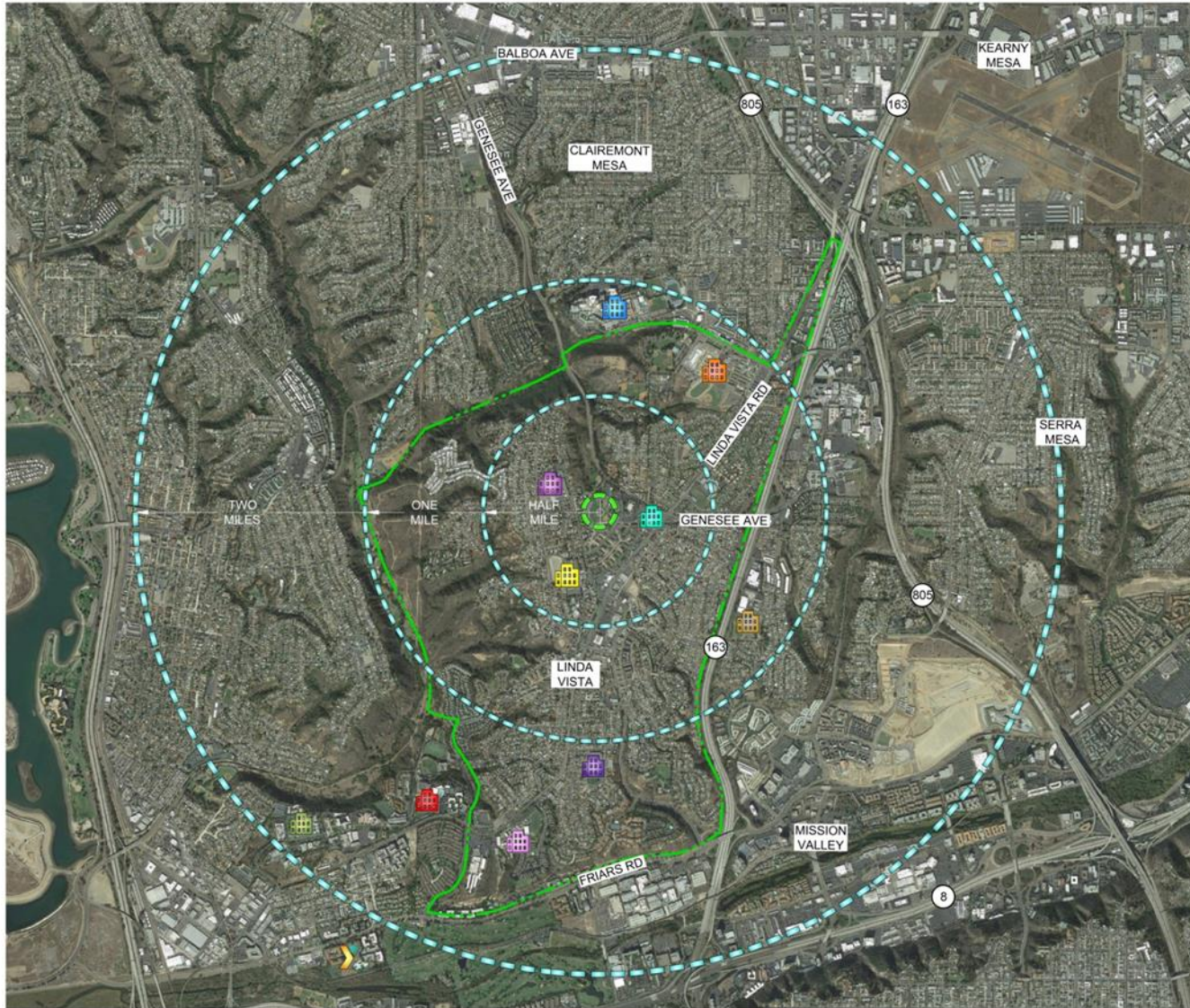
SCHMIDT DESIGN GROUP, INC.

BALANCING ARTISTIC EXPRESSION IN DESIGN  
WITH ENVIRONMENTAL SENSITIVITY

1111 Sixth Avenue, Suite 500, San Diego, CA 92101  
telephone (619) 236-1462 facsimile (619) 236-8792  
www.schmidt-design.com

Lic. CA 2138, NV 219, AZ 34139





**GRAPHICS LEGEND**

SYMBOL	NOTES
	LINDA VISTA COMMUNITY PARK
	DELINEATED DISTANCE FROM SITE
	LINDA VISTA COMMUNITY LIMITS
	KEARNY MESA HIGH SCHOOL
	MESA COLLEGE
	LINDA VISTA ELEMENTARY SCHOOL
	MONTGOMERY MIDDLE SCHOOL
	CARSON ELEMENTARY SCHOOL
	LINDA VISTA CHARTER SCHOOL
	MARK TWAIN HIGH SCHOOL
	FRANCIS PARKER SCHOOL
	UNIVERSITY OF SAN DIEGO
	FLETCHER ELEMENTARY SCHOOL
	MISSION VALLEY YMCA

**SCHMIDT DESIGN GROUP, INC.**

BALANCING ARTISTIC EXPRESSION IN DESIGN WITH ENVIRONMENTAL SENSITIVITY

1111 Sixth Avenue, Suite 500, San Diego, CA 92101  
 telephone (619) 236-1462 facsimile (619) 236-8792  
 www.schmidtdesign.com

Lic. CA 2138, NV 219, AZ 34139



**LINDA VISTA COMMUNITY PARK**





SCHMIDT DESIGN GROUP, INC.

BALANCING ARTISTIC EXPRESSION IN DESIGN  
WITH ENVIRONMENTAL SENSITIVITY

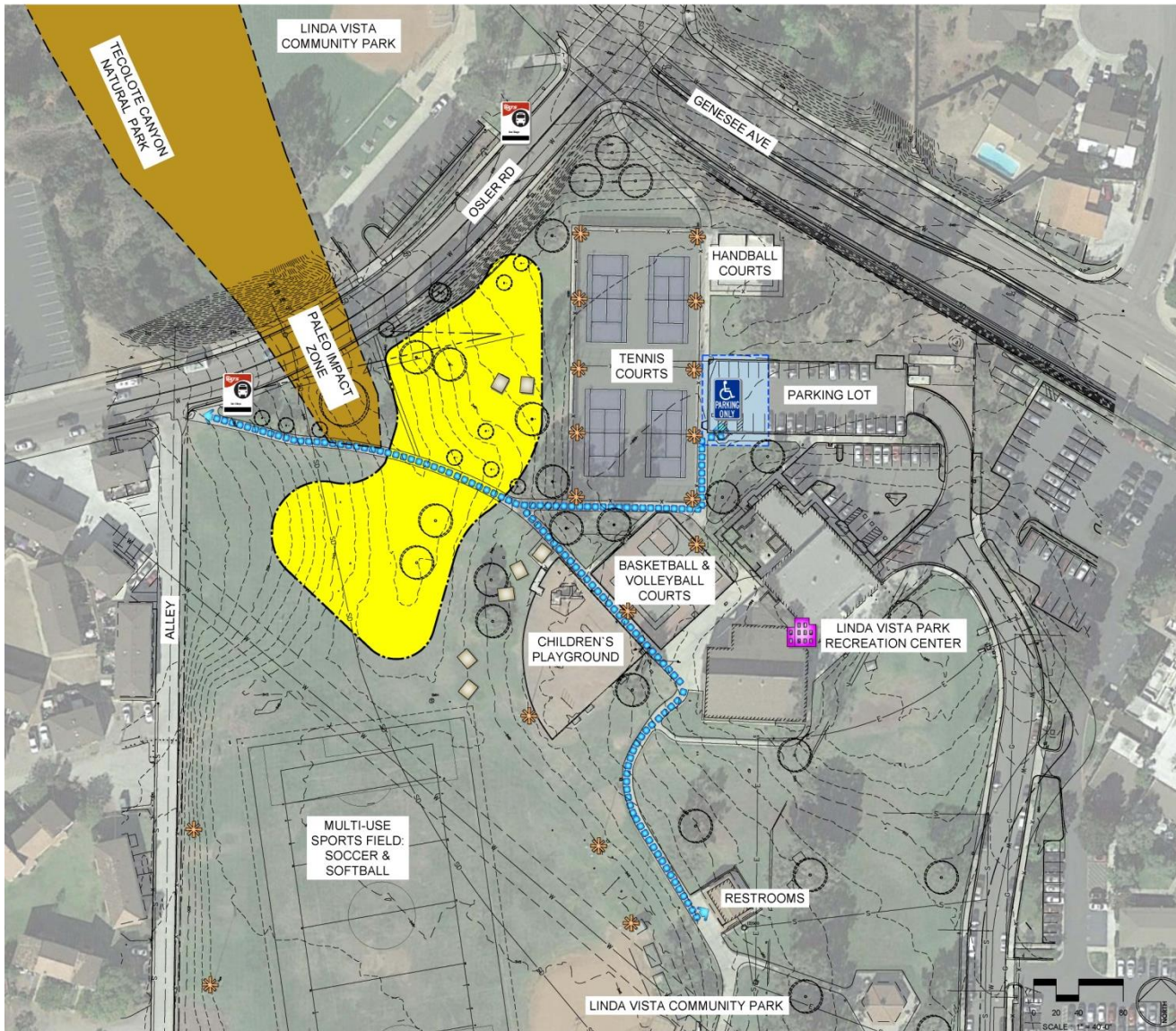
1111 Sixth Avenue, Suite 500, San Diego, CA 92101  
telephone (619) 236-1462 facsimile (619) 236-8792  
www.schmidtgroup.com

Lic. CA 2138, NV 219, AZ 34139



## LINDA VISTA COMMUNITY PARK





**EXISTING CONDITIONS & RFP LEGEND**

SYMBOL	NOTES
	AREA OF EXISTING PALEO SENSITIVITY
	APPROX. AREA OF PROPOSED SKATEPARK
	EXISTING NON COMPLIANT WALKWAY
	EXISTING NON COMPLIANT PARKING STALLS
	PROPERTY LINE / ROW
	LINDA VISTA PARK RECREATION CENTER
	EXISTING OSLER BUS STOPS
	EXISTING SPORTS LIGHTING
	EXISTING PICNIC TABLES
	EXISTING TREES

**SKATE PARK – 53,000 SF FOOTPRINT**

**USABLE SKATE – 30,000 SF SURFACING**

**SCHMIDT DESIGN GROUP, INC.**

BALANCING ARTISTIC EXPRESSION IN DESIGN WITH ENVIRONMENTAL SENSITIVITY

1111 Sixth Avenue, Suite 500, San Diego, CA 92101  
 telephone (619) 236-1462 facsimile (619) 236-8792  
 www.schmidtsgroup.com

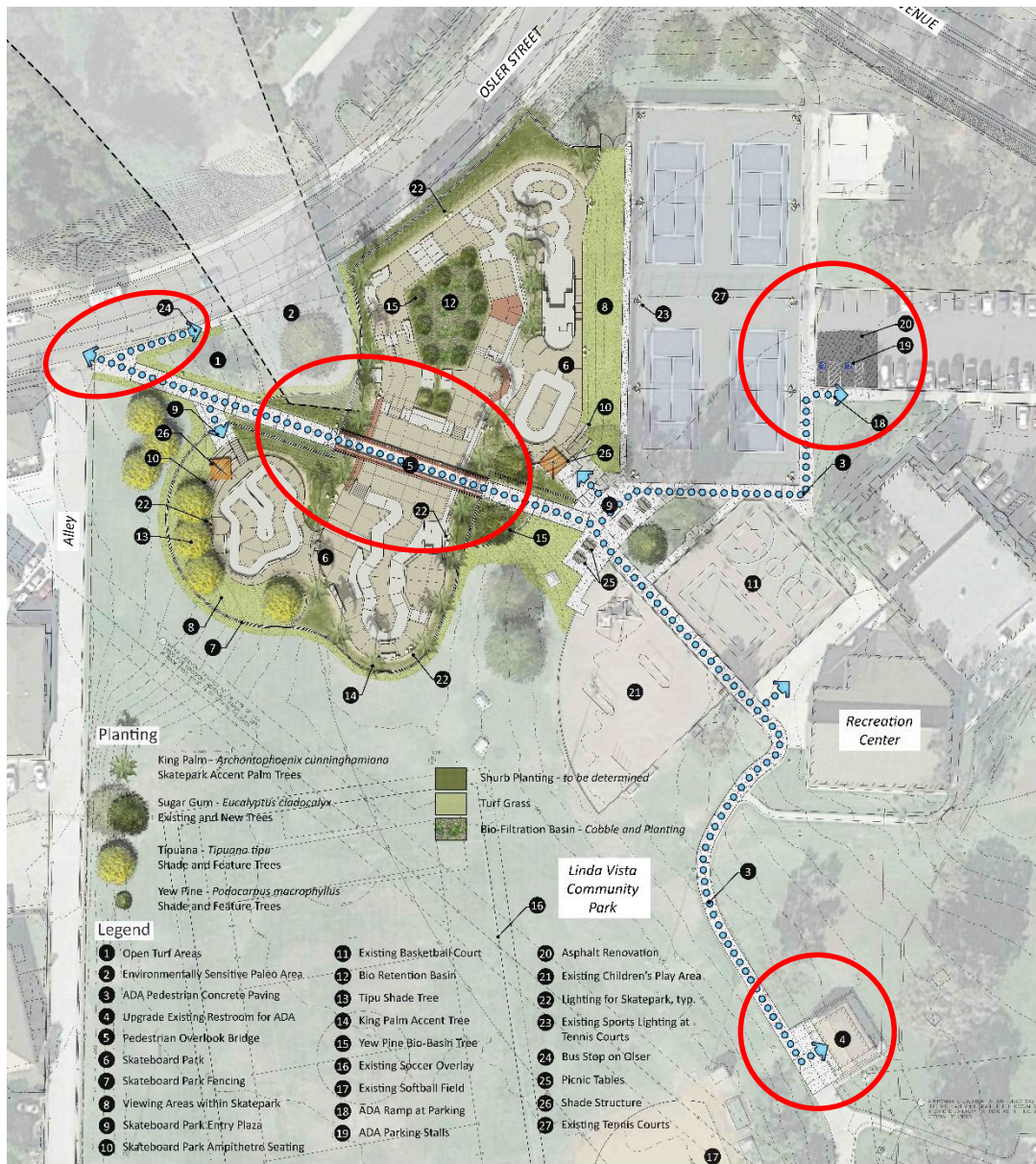
Lic. CA 2138, NV 219, AZ 34139



**EXISTING CONDITIONS / SKATE PARK LOCATION**







- IMPROVED PATH OF TRAVEL TO MEET ADA COMPLIANCE
- PEDESTRIAN BRIDGE LINKAGE AT MAIN PATH OF TRAVEL
- PARKING LOT IMPROVEMENTS
- BUS STOP IMPROVEMENTS
- ADA RESTROOM UPGRADES

SCHMIDT DESIGN GROUP, INC.

BALANCING ARTISTIC EXPRESSION IN DESIGN WITH ENVIRONMENTAL SENSITIVITY

1111 Sixth Avenue, Suite 500, San Diego, CA 92101  
 telephone (619) 236-1462 facsimile (619) 236-8792  
 www.schmidtgroup.com

Lic. CA 2138, NV 219, AZ 34139



## ADA PATH OF TRAVEL AND FACILITY UPGRADES





**SKATE PARK** – 53,000 SF  
**FOOTPRINT**

**USABLE SKATE** – 30,000 SF  
**SURFACING**

**BIO BASIN** – 3,700 SF  
**AREA**

**IMPROVED** – 19,300 SF  
**LANDSCAPE**  
**AREA INSIDE**  
**FENCE LINE**

**SCHMIDT DESIGN GROUP, INC.**

BALANCING ARTISTIC EXPRESSION IN DESIGN  
WITH ENVIRONMENTAL SENSITIVITY

1111 Sixth Avenue, Suite 500, San Diego, CA 92101  
telephone (619) 236-1462 facsimile (619) 236-8792  
www.schmidtdesign.com

Lic. CA 2138, NV 219, AZ 34139



**DRAFT GENERAL DEVELOPMENT PLAN**





**SCHMIDT DESIGN GROUP, INC.**

BALANCING ARTISTIC EXPRESSION IN DESIGN  
WITH ENVIRONMENTAL SENSITIVITY

1111 Sixth Avenue, Suite 500, San Diego, CA 92101  
telephone (619) 236-1462 facsimile (619) 236-8792  
www.schmidtdesign.com

Lic. CA 2198, NV 219, AZ 34139



## BRIDGE STRUCTURE AS A SIGNATURE ELEMENT





Tube Steel Fencing



Shade Structure



Water Fountain



Picnic Table



Trash Receptacle



Weathered Steel Bridge



SCHMIDT DESIGN GROUP, INC.

BALANCING ARTISTIC EXPRESSION IN DESIGN WITH ENVIRONMENTAL SENSITIVITY

1111 Sixth Avenue, Suite 500, San Diego, CA 92101  
telephone (619) 236-1462 facsimile (619) 236-8792  
www.schmidtdesign.com

Lic. CA 2138, NV 219, AZ 34139



**SITE FURNISHINGS**



## TREES



*Archontophoenix cunninghamiana*  
– King Palm



*Podocarpus macrophyllus* – Yew Pine



*Tipuana Tipu* – Tipu Tree

## SHRUBS



*Cistus x purpureus* – Orchid Rockrose



*Raphiolepis indica* 'Ballerina'  
– India Hawthorn 'Ballerina'



*Rosmarinus officinalis* 'Blue Spires'  
– Blue Spires Rosemary

SCHMIDT DESIGN GROUP, INC.

BALANCING ARTISTIC EXPRESSION IN DESIGN  
WITH ENVIRONMENTAL SENSITIVITY

1111 Sixth Avenue, Suite 500, San Diego, CA 92101  
telephone (619) 236-1462 facsimile (619) 236-8792  
www.schmidtdesign.com

Lic. CA 2138, NV 219, AZ 34139



CONCEPT PLANT PALLET

**SITE**  
DESIGN GROUP, INC.

## GROUNDCOVERS



*Baccharis pilularis* 'Pigeon Point'  
– Coyote Brush



*Ceanothus griseus horizontalis*  
– Carmel Creeper



*Lantana montevidensis* 'New Gold'  
– Trailing Lantana



*Rosmarinus officinalis*  
'Huntington Carpet'  
– Huntington Carpet Rosemary

## BIOSWALE



*Carex senta* – Rough Sedge



*Iris douglasiana* – Douglas Iris



*Juncus patens* – California Gray Rush



*Leymus condensatus* – Native Blue Rye

SCHMIDT DESIGN GROUP, INC.



BALANCING ARTISTIC EXPRESSION IN DESIGN  
WITH ENVIRONMENTAL SENSITIVITY

1111 Sixth Avenue, Suite 500, San Diego, CA 92101  
telephone (619) 236-1462 facsimile (619) 236-8792  
www.schmidtdesign.com

Lic. CA 2198, NV 219, AZ 34139



CONCEPT PLANT PALLET



# SKATE PARK DESIGN

SCHMIDT DESIGN GROUP, INC.

BALANCING ARTISTIC EXPRESSION IN DESIGN  
WITH ENVIRONMENTAL SENSITIVITY

1111 Sixth Avenue, Suite 500, San Diego, CA 92101  
telephone {619} 236-1462 facsimile {619} 236-8792  
www.schmidtdesign.com

Lic. CA 2138, NV 219, AZ 34139





**SCHMIDT DESIGN GROUP, INC.**

BALANCING ARTISTIC EXPRESSION IN DESIGN  
WITH ENVIRONMENTAL SENSITIVITY

1111 Sixth Avenue, Suite 500, San Diego, CA 92101  
telephone (619) 236-1462 facsimile (619) 236-8792  
www.schmidtdesign.com

Lic. CA 2158, NV 219, AZ 34139



**BIRDS EYE SKATE PARK GRAPHIC**







**SCHMIDT DESIGN GROUP, INC.**

BALANCING ARTISTIC EXPRESSION IN DESIGN  
WITH ENVIRONMENTAL SENSITIVITY

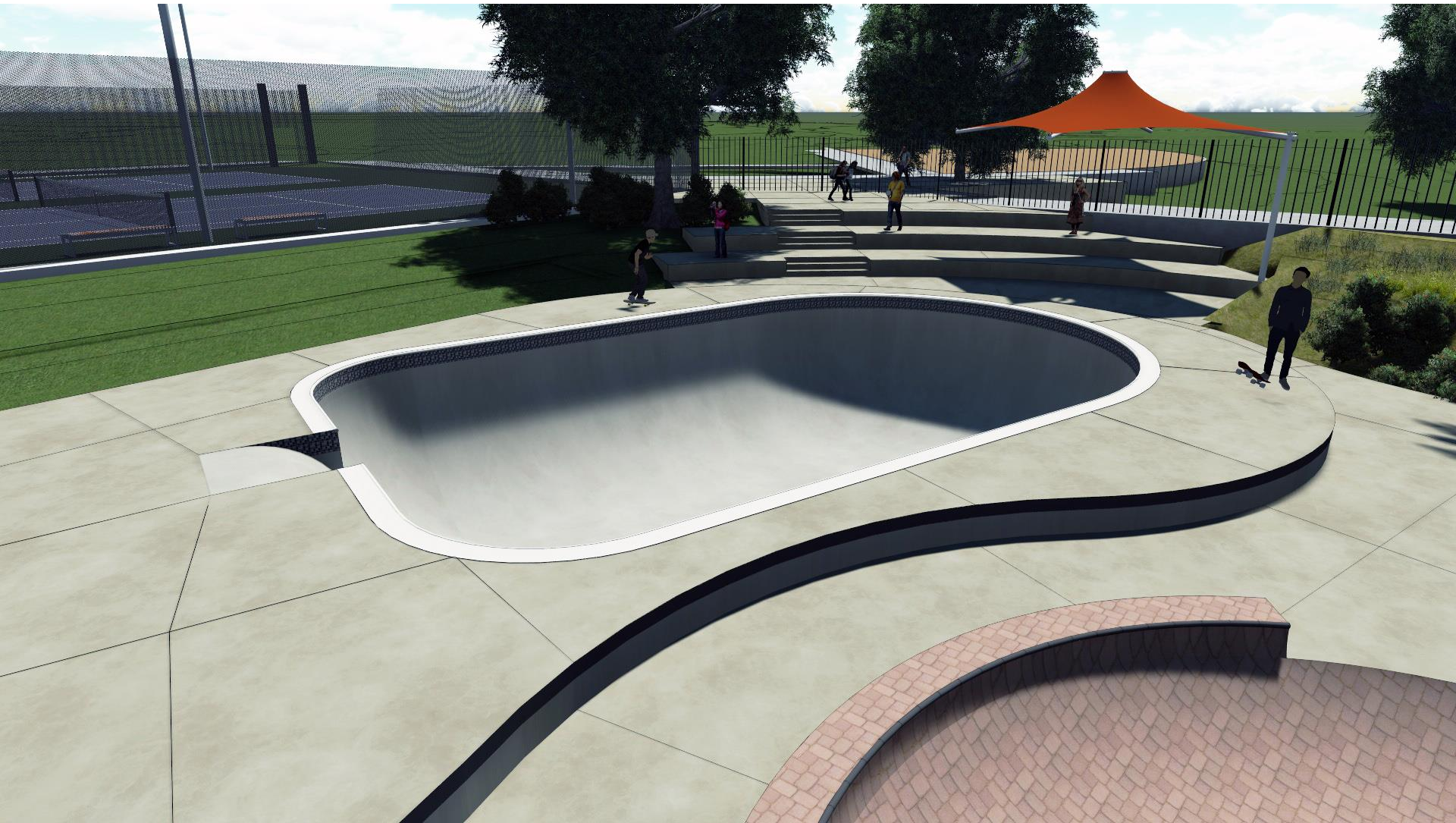
1111 Sixth Avenue, Suite 500, San Diego, CA 92101  
 telephone {619} 236-1462 facsimile {619} 236-8792  
 www.schmidtgroup.com

Lic. CA 2158, NV 219, AZ 34139



**SIGNATURE FULL PIPE**





**SCHMIDT DESIGN GROUP, INC.**



BALANCING ARTISTIC EXPRESSION IN DESIGN  
WITH ENVIRONMENTAL SENSITIVITY

1111 Sixth Avenue, Suite 500, San Diego, CA 92101  
telephone (619) 236-1462 facsimile (619) 236-8792  
www.schmidtdesign.com

Lic. CA 2138, NV 219, AZ 34139



**COMPETITION PRO-BOWL**





**SCHMIDT DESIGN GROUP, INC.**



BALANCING ARTISTIC EXPRESSION IN DESIGN  
WITH ENVIRONMENTAL SENSITIVITY

1111 Sixth Avenue, Suite 500, San Diego, CA 92101  
telephone (619) 236-1462 facsimile (619) 236-8792  
www.schmidtdesign.com

Lic. CA 2158, NV 219, AZ 34139



# INTERMEDIATE POOL AND SNAKE RUN





**SCHMIDT DESIGN GROUP, INC.**

BALANCING ARTISTIC EXPRESSION IN DESIGN WITH ENVIRONMENTAL SENSITIVITY

1111 Sixth Avenue, Suite 500, San Diego, CA 92101  
telephone (619) 236-1462 facsimile (619) 236-8792  
www.schmidtgroup.com

Lic. CA 2198, NV 219, AZ 34139



# STREET PLAZA WITH MONTGOMERY STAIR SET





**SCHMIDT DESIGN GROUP, INC.**

BALANCING ARTISTIC EXPRESSION IN DESIGN  
WITH ENVIRONMENTAL SENSITIVITY

1111 Sixth Avenue, Suite 500, San Diego, CA 92101  
telephone (619) 236-1462 facsimile (619) 236-8792  
www.schmidt-design.com

Lic. CA 2138, NV 219, AZ 34139



**BIRDS EYE SKATE PARK GRAPHIC**





**SCHMIDT DESIGN GROUP, INC.**



BALANCING ARTISTIC EXPRESSION IN DESIGN  
WITH ENVIRONMENTAL SENSITIVITY

1111 Sixth Avenue, Suite 500, San Diego, CA 92101  
telephone (619) 236-1462 facsimile (619) 236-8792  
www.schmidtdesign.com

Lic. CA 2198, NV 219, AZ 34139



**SIGNATURE FLOW BOWL**





**SCHMIDT DESIGN GROUP, INC.**



BALANCING ARTISTIC EXPRESSION IN DESIGN  
WITH ENVIRONMENTAL SENSITIVITY

1111 Sixth Avenue, Suite 500, San Diego, CA 92101  
telephone (619) 236-1462 facsimile (619) 236-8792  
www.schmidtdesign.com

Lic. CA 2138, NV 219, AZ 34139



# DRAINAGE DITCH SNAKE RUN WITH 10 STAIR SET





**SCHMIDT DESIGN GROUP, INC.**

BALANCING ARTISTIC EXPRESSION IN DESIGN  
WITH ENVIRONMENTAL SENSITIVITY

1111 Sixth Avenue, Suite 500, San Diego, CA 92101  
telephone (619) 236-1462 facsimile (619) 236-8792  
www.schmidtgroup.com

Lic. CA 2138, NV 219, AZ 34139



**DRAINAGE DITCH SNAKE RUN  
WITH SIGNATURE BRIDGE**





# QUESTIONS & DISCUSSION

## PARK AND RECREATION BOARD APPROVAL

SCHMIDT DESIGN GROUP, INC.

BALANCING ARTISTIC EXPRESSION IN DESIGN  
WITH ENVIRONMENTAL SENSITIVITY

1111 Sixth Avenue, Suite 500, San Diego, CA 92101  
telephone (619) 236-1462 facsimile (619) 236-8792  
www.schmidt-design.com

Lic. CA 2138, NV 219, AZ 34139





# Linda Vista Community Park General Development Plan Amendment Linda Vista Skatepark

**Park and Recreation Board Meeting**

**April 16, 2015**

Presented by:

**City of San Diego Public Works**

**Schmidt Design Group, Inc.**

**Site Design Group, Inc.**

**SCHMIDT DESIGN GROUP, INC.**

BALANCING ARTISTIC EXPRESSION IN DESIGN  
WITH ENVIRONMENTAL SENSITIVITY

1111 Sixth Avenue, Suite 500, San Diego, CA 92101  
telephone (619) 236-1462 facsimile (619) 236-8792  
www.schmidt-design.com

Lic. CA 2138, NV 219, AZ 34139

