

A Community Plan provides direction to guide growth and development within a given area. It describes the community's vision and identifies strategies for enhancing community character and managing change. It includes goals, policies, and implementing strategies. It guides local decision-making and public investments. It plays an important role in regulating land use.

# Workshop Summary

## AN OPPORTUNITY FOR A NEW VISION



### WHAT IS SPECIAL ABOUT MISSION VALLEY?

- Centralized location, easy access to freeways and surrounding areas/attractions
- San Diego River
- High potential for change
- Golf course

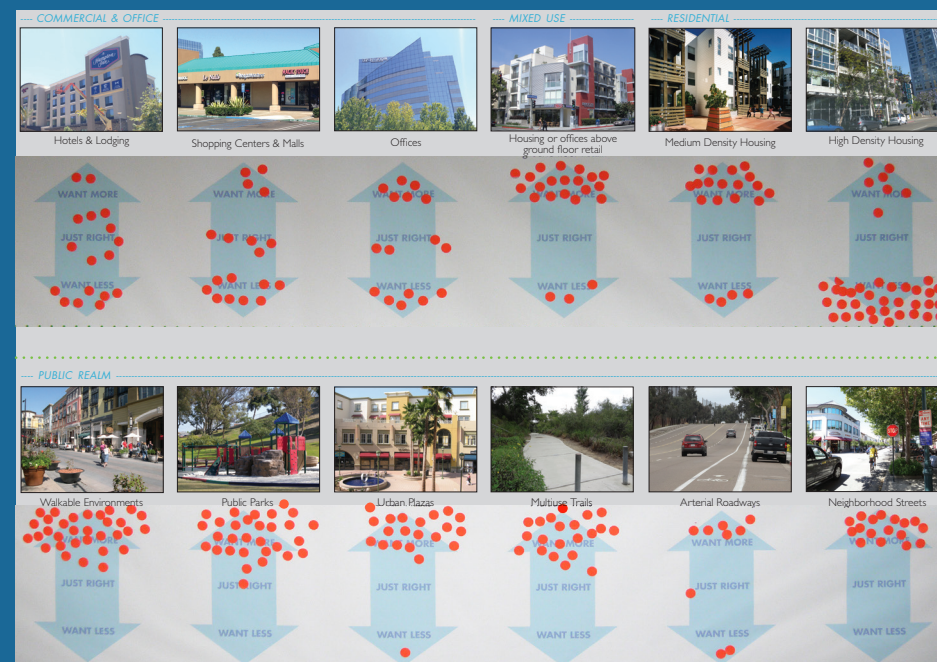
### WHAT ARE THE CHALLENGES?

- Addressing traffic
- Preserving green space
- Making Mission Valley more pedestrian friendly
- Need for affordable housing

### WHAT ARE FUTURE OPPORTUNITIES?

- Expanding parks & recreation
- Creating multi-modal opportunities including north-south connection
- Mixed-use development

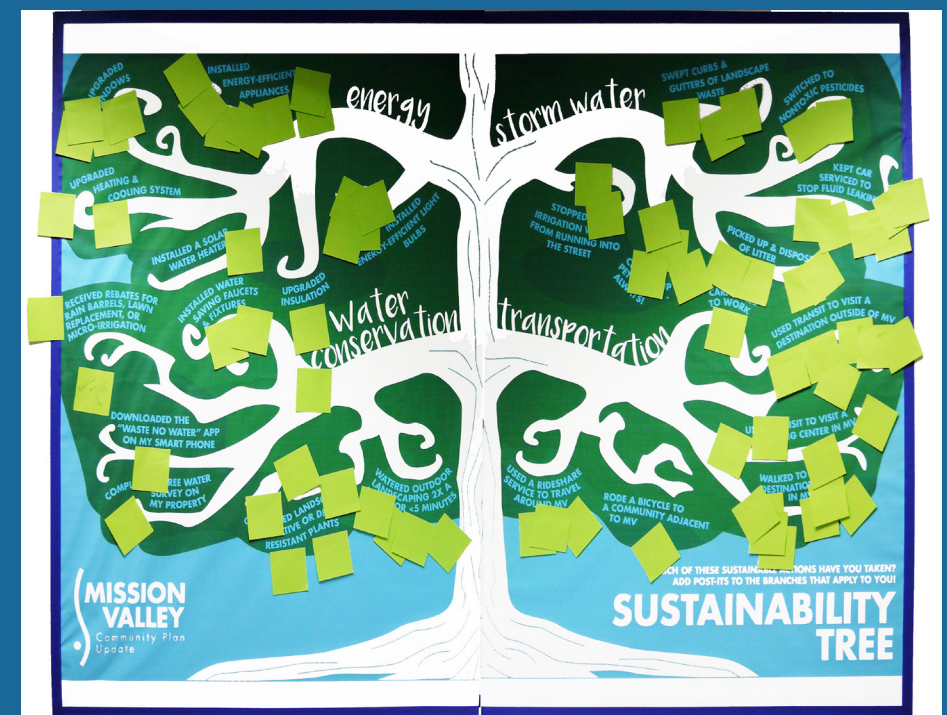
## COMMUNITY CHARACTER



### WE WANT TO SEE MORE:

- Housing or office above ground floor retail
- A mix of housing types
- Walkable environments and urban plazas
- Public parks and multi-use trails
- Neighborhood streets

## SUSTAINABILITY



### WHAT WE ARE DOING:

#### STORM WATER CAPTURE:

- Better serviced cars
- Controlled irrigation

#### WATER CONSERVATION

- Water-sensitive outdoor landscaping
- Drought tolerant plants

#### ENERGY CONSERVATION:

- Upgraded windows
- Energy-efficient appliances & light bulbs

#### ALTERNATIVE TRANSPORTATION

- Transit use to great San Diego destinations
- Walking in my neighborhood



**MOBILITY**



**WE WANT TO SEE MORE:**

- Coordinated signalization
- Pedestrian paths
- Trolley access and use & ride share opportunities
- Streets designed for all modes of travel
- A roadway network that accommodates increased density

**PUBLIC ART**



**WE WANT TO SEE MORE:**

- Expression of identity and history THROUGH Sculptures, Furniture, Lighting, Interactive art

**COMMUNITY PLAN OVERVIEW**

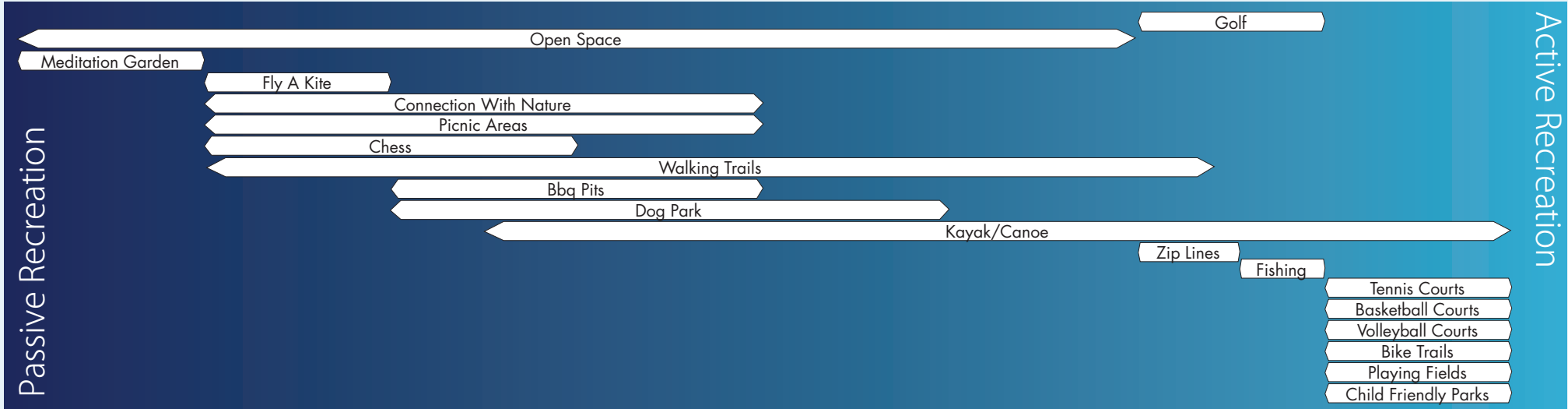
The event provided an overview of the contents of a community plan and included interactive exercises on the subject areas including:

- Land Use
- Urban Design
- Mobility
- Historic Preservation
- Recreation
- Economic Prosperity
- Arts & Culture
- Public Facilities, Services, & Safety
- Conservation & Sustainability



**PUBLIC FACILITIES & PARKS**

**WE THINK AN IDEAL PARK HAS:**



**WE WANT TO SEE MORE:**

- Public parks & multi-use trails
- Active and passive recreations opportunities, especially the activities listed above

**SUMMARY OF GENERAL COMMENTS:**

- Create a development vision rather than development restrictions.
- Ensure that there is a fair amount of quality new affordable housing.
- Incorporate history into the planning and development of Mission Valley.
- Maintain Riverwalk golf course in its current condition.
- Balance needs of current residents and new development, reach out to surrounding communities, and maintain community character.
- Ensure public facilities and services (water, landfills, and police) are adequate to accommodate growth and new development.
- Address traffic issues throughout valley and expand multi-modal transit opportunities.
- Increase opportunities to recreate, develop open space areas, provide pedestrian paths and increase access to the San Diego River.