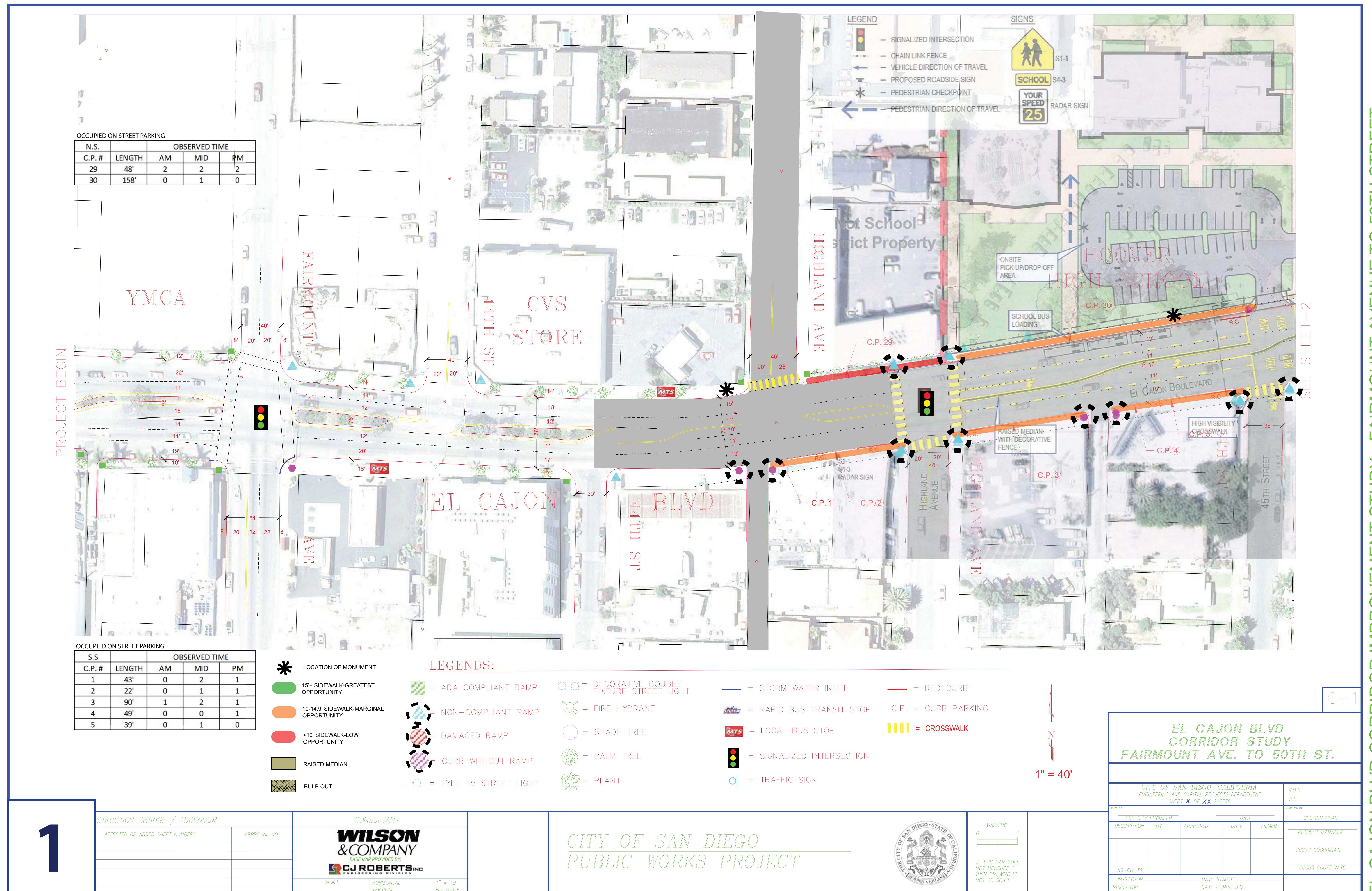


HIGHLAND AVENUE TO 45TH STREET

EL CAJON BLVD CORRIDOR IMPROVEMENT STUDY - FAIRMOUNT AVENUE TO 50TH STREET



CHAMOUNE AVENUE TO MENLO AVENUE

SEE SHEET-1

C.P. #	LENGTH	OBSERVED TIME		
		AM	MID	PM
31	41'	0	1	0
32	47'	0	0	0
33	54'	3	2	2
34	42'	2	2	2
35	134'	5	6	4

FORMALIZE CIRCULATION & PICK-UP/DROP-OFF

TURN AROUND WITH TWO-WAY TRAVEL

RELOCATE DRIVEWAY

NEW OFFSET SIGNAL

MTS BUS STOP

CHAMOUNE AVE

46TH ST

46TH ST

BLVD

MENLO AVE

C.P. 1, C.P. 2, C.P. 3, C.P. 4, C.P. 5, C.P. 6, C.P. 7, C.P. 8, C.P. 9, C.P. 10, C.P. 11, C.P. 12, C.P. 13, C.P. 14

R.C.

SEE SHEET-3

OCCUPIED ON STREET PARKING

OCCUPIED ON STREET PARKING				
S.S		OBSERVED TIME		
C.P. #	LENGTH	AM	MID	PM
6	52'	1	1	1
7	99'	3	4	3
8	119'	3	3	4
9	115'	4	3	3
10	50'	2	1	1
11	40'	1	2	2
12	20'	0	0	1
13	31'	1	1	1
14	46'	2	2	2

 BULB OUT

1" = 40'

EL CAJON BLVD
CORRIDOR STUDY
FAIRMOUNT AVE. TO 50TH ST.

CITY OF SAN DIEGO, CALIFORNIA ENGINEERING AND CAPITAL PROJECTS DEPARTMENT SHEET X OF XX SHEETS	W.B.S. _____ W.O. _____
--------------------------------------------------------------------------------------------------------------------	----------------------------

FOR CITY ENGINEER _____ DATE _____					SECTION HEAD _____
DESCRIPTION	BY	APPROVED	DATE	FILMED	PROJECT MANAGER _____
					CCS27 COORDINATE _____
					CCS83 COORDINATE _____
AS-BUILTS					
CONTRACTOR _____			DATE STARTED _____		
INSPECTOR _____			DATE COMPLETED _____		

2

WILSON
& COMPANY

BASE MAP PROVIDED BY:
CJ ROBERTS IN
ENGINEERING DIVISION

SCALE	HORIZONTAL	1" = 40'
-------	------------	----------



WARNING

IF THIS BAR DOES NOT MEASURE THEN DRAWING NOT TO SCALE

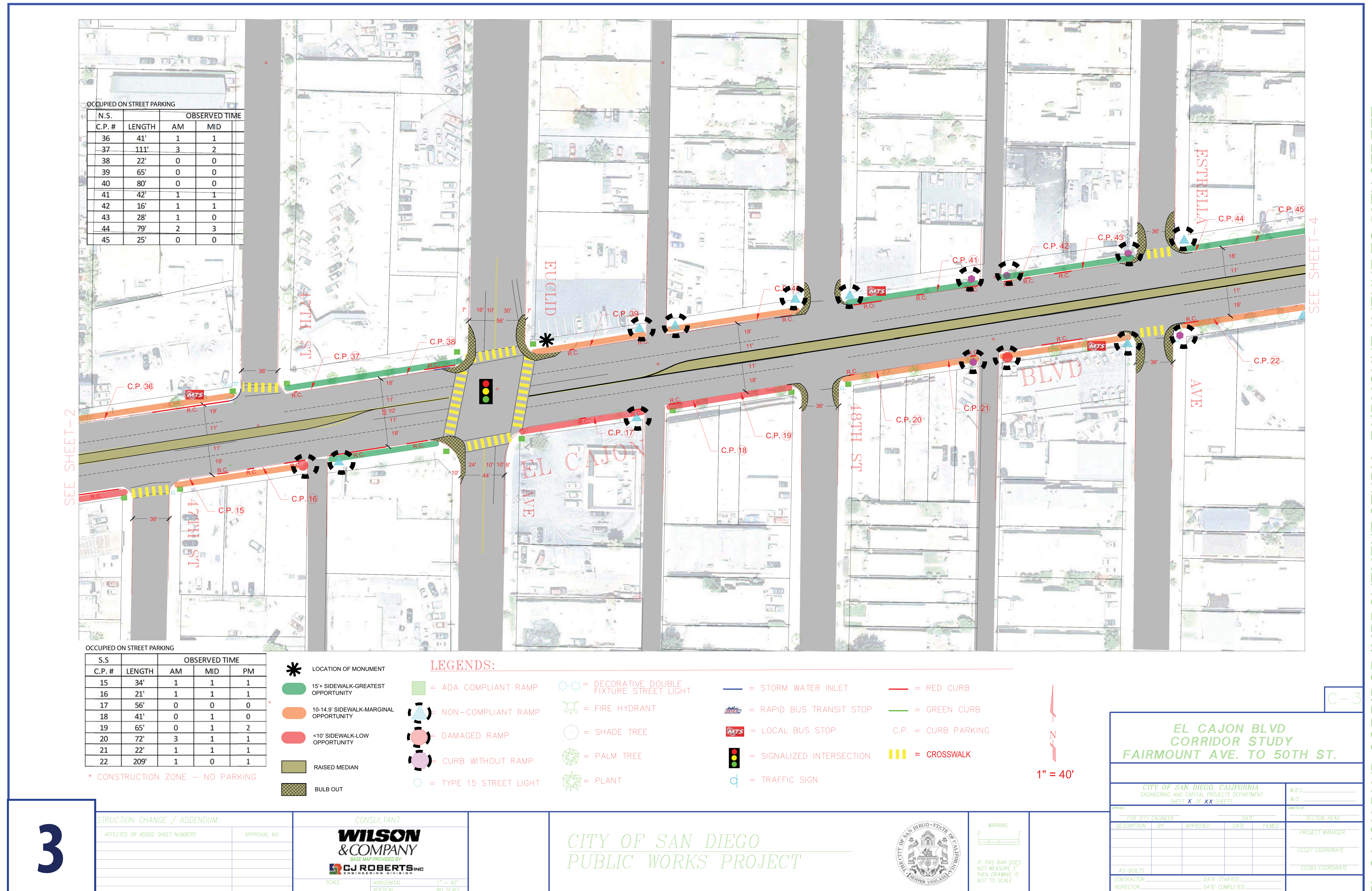
C-2

EL CAJON BLVD CORRIDOR IMPROVEMENT STUDY - FAIRMOUNT AVENUE TO 50TH STREET

EL CAJON BOULEVARD

47TH STREET TO ESTRELLA AVENUE

Corridor Concept

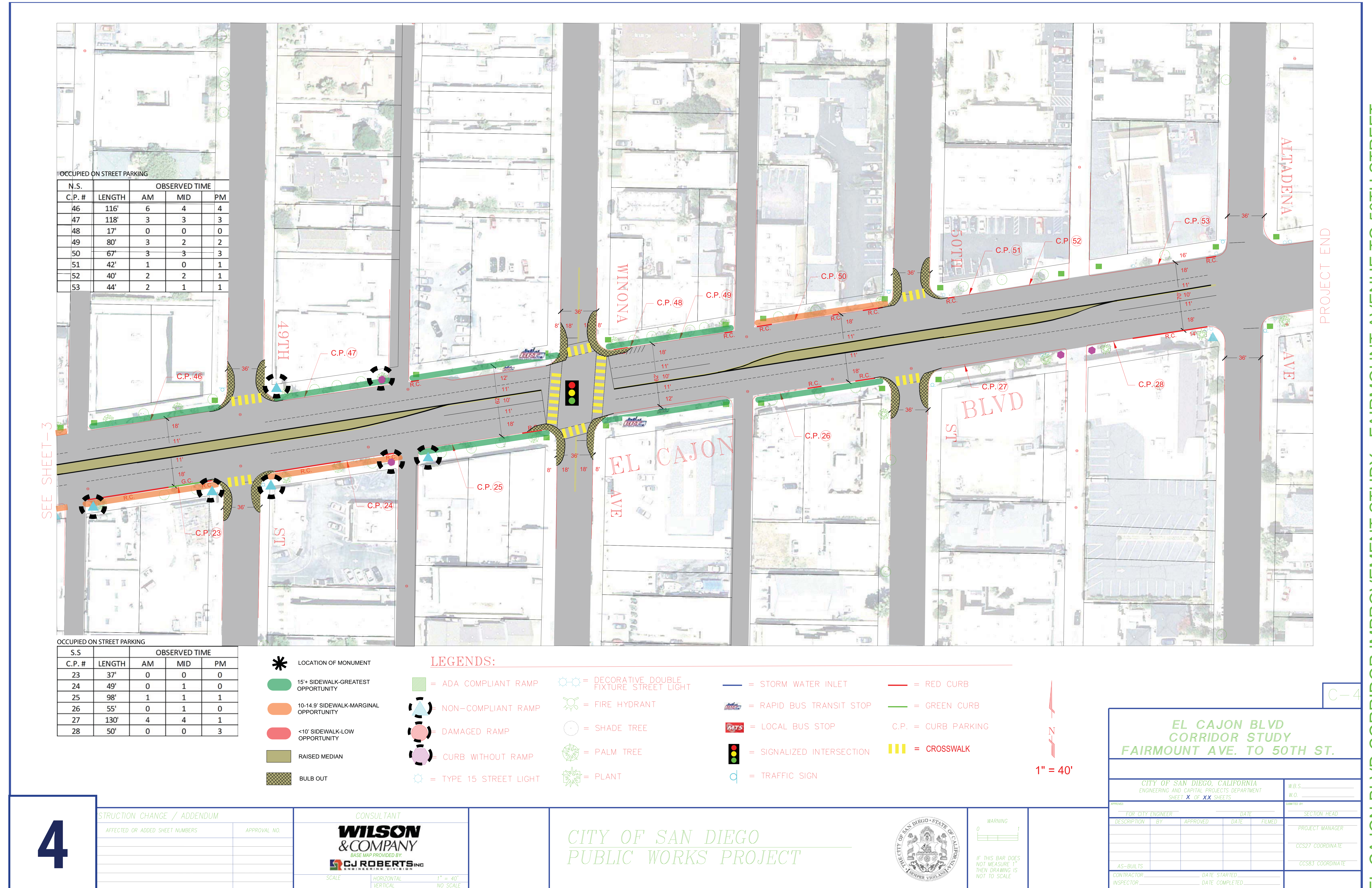


EL CAJON BLVD CORRIDOR IMPROVEMENT STUDY - FAIRMOUNT AVENUE TO 50TH STREET

EL CAJON BOULEVARD

49TH STREET TO 50TH STREET

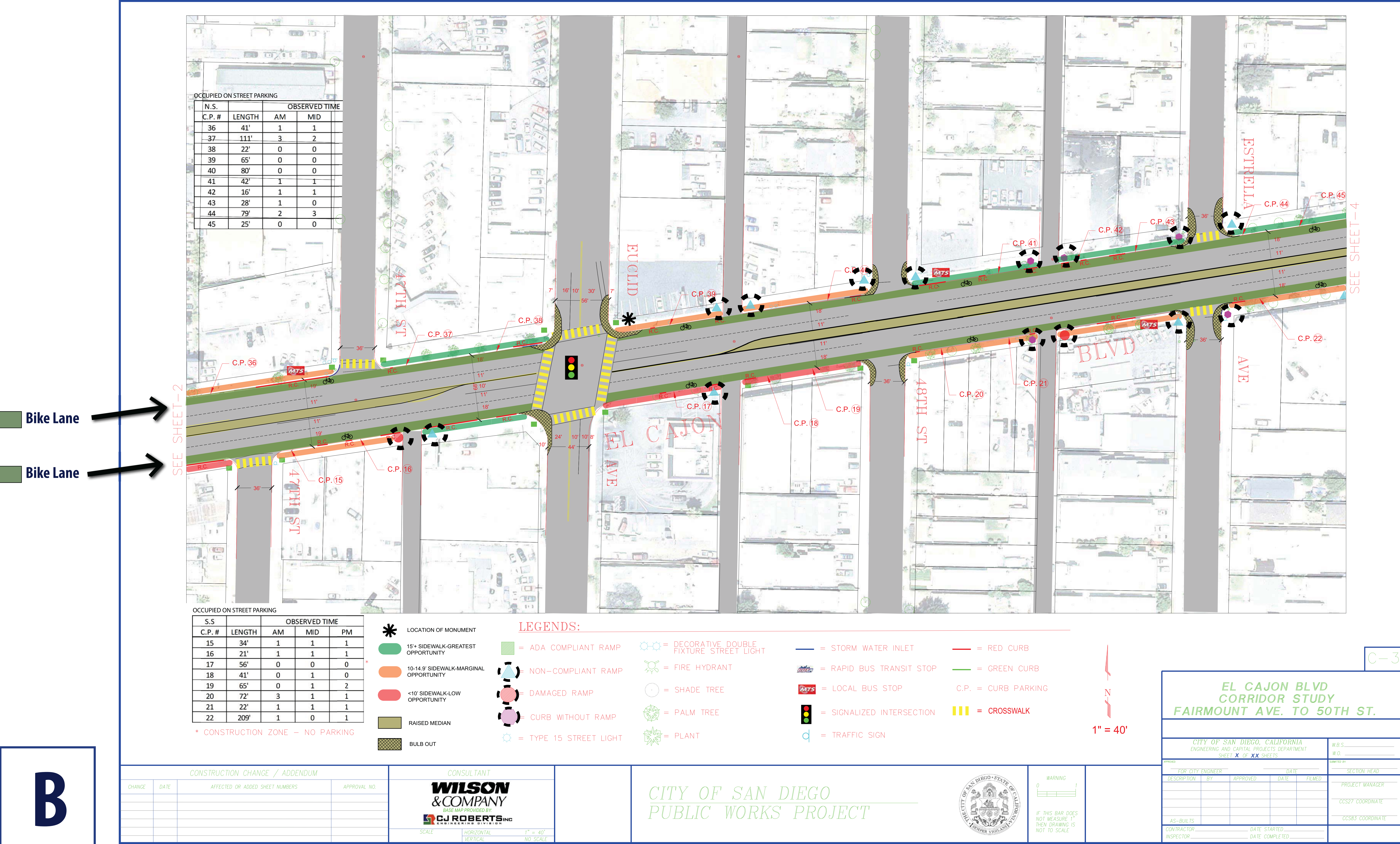
Corridor Concept



EL CAJON BOULEVARD

Corridor Concept

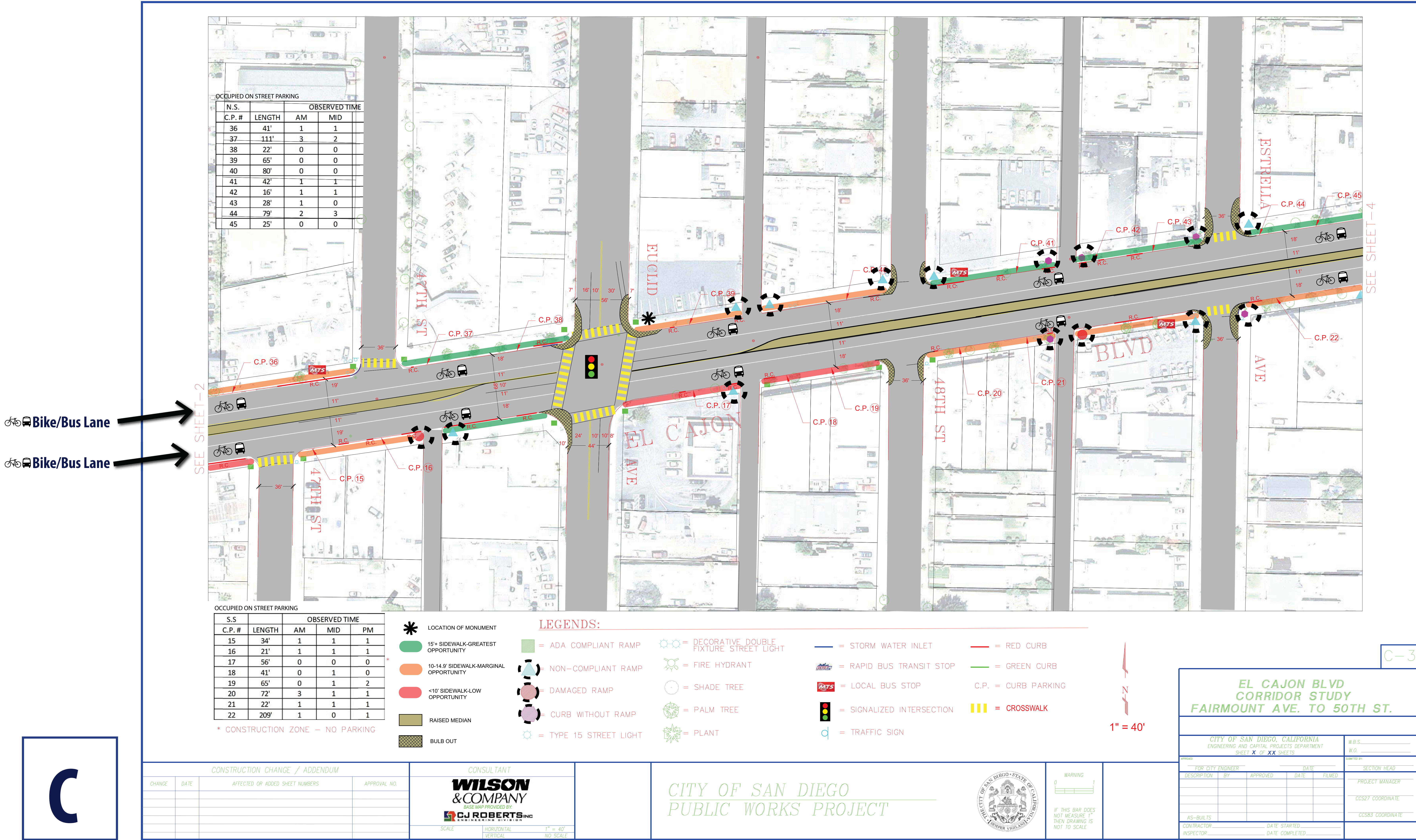
- All on street parking removed,
- Bike lane added,
- Limited available right-of-way does not support widening the curb-to-curb width to install bicycle lanes.



EL CAJON BOULEVARD

Corridor Concept

- On street parking remains,
- Dedicated bike and bus lane,
- One lane in each direction,
- Approximately 10,000 vehicles per day would need to be redirected and use a different route.



EL CAJON BLVD CORRIDOR IMPROVEMENT STUDY - FAIRMOUNT AVENUE TO 50TH STREET