

# DRAINAGE SYSTEMS

**SUPPLEMENTAL TO REGIONAL STANDARD DRAWING ( "D" SERIES )**  
**DRAWINGS D-1, D-2, D-3, AND D-4**

REQUIRES the use of SDG-110

DRAWING D-12

NOTES

Amend note 3 to read: "When curb inlet opening height (H) exceeds 8 inch, install 1 inch diameter steel protection bar."

Amend note 4 to read: "Install additional bars at 3-1/2 inch clear spacing above first bar when opening exceeds 16 inch."

DRAWING D-19

NOTES

Add 3. Slotted drain installations shall be encased with 6 inch PCC (520-C-2500) all around and shall be poured monolithically with the curb and gutter.

DRAWING D-40

SECTION B-B

Amend 1/2D min. to read: "1D min." In addition, show riprap and concrete channel drawn even with top of pipe.

NOTES

Amend note 1.B) to read: "Filter blanket material."

Amend note 3 to read: "Riprap shall be placed over a geotextile filter fabric. Filter blanket material shall be placed under the fabric when specified."

DRAWING D-40, D-41A, and D-41B

Add the following:

Design Velocity (Ft./Sec)*	Rock Classification
6-10	No. 2 Backing
10-12	1/4 Ton
12-14	1/2 Ton
14-16	1 Ton
16-18	2 Ton

SECTION OF RIP RAP

\* over 18 fps requires special design

**SHT. 1 OF 2**

Revision	By	Approved	Date	<b>CITY OF SAN DIEGO - STANDARD DRAWING</b>	CITY OF SAN DIEGO STANDARDS COMMITTEE <i>George F. Rollinger</i> 2-7-95 COORDINATOR R.C.E. 25902 DATE
ORIGINAL		M. V. Rollinger	5-20-92		
NOTES	SM	D. Clafre	12-9-03	SUPPLEMENTAL TO REGIONAL STANDARD DRAWING ( "D" SERIES )	DRAWING NUMBER <b>SDD-100</b>

DRAWING D-63

NOTES

Amend note 3 to read: "The O.D. of smaller pipe shall not be more than two-thirds (2 /3) the size of the larger pipe's I.D."

DRAWING D-70, D-71, D-74, D-79A, D-79B, D-80A, & 80B

NOTES

"Channel fencing is required. Unless otherwise shown on the plans a chain link fence (per Standard Drawings M-5 and M-6) six feet (6') in height, with a top rail set at six inches (6") inside easement boundary lines shall be constructed on both sides, including box culverts or any other structure at the end of the channel. Access points shall be provided on both sides at 500' maximum intervals. Two ten foot (10') gates or one twenty foot (20') gate for vehicular access are required at a maximum of 1000' intervals and may be placed on either side. The remaining access points shall be four-foot (4') gates."

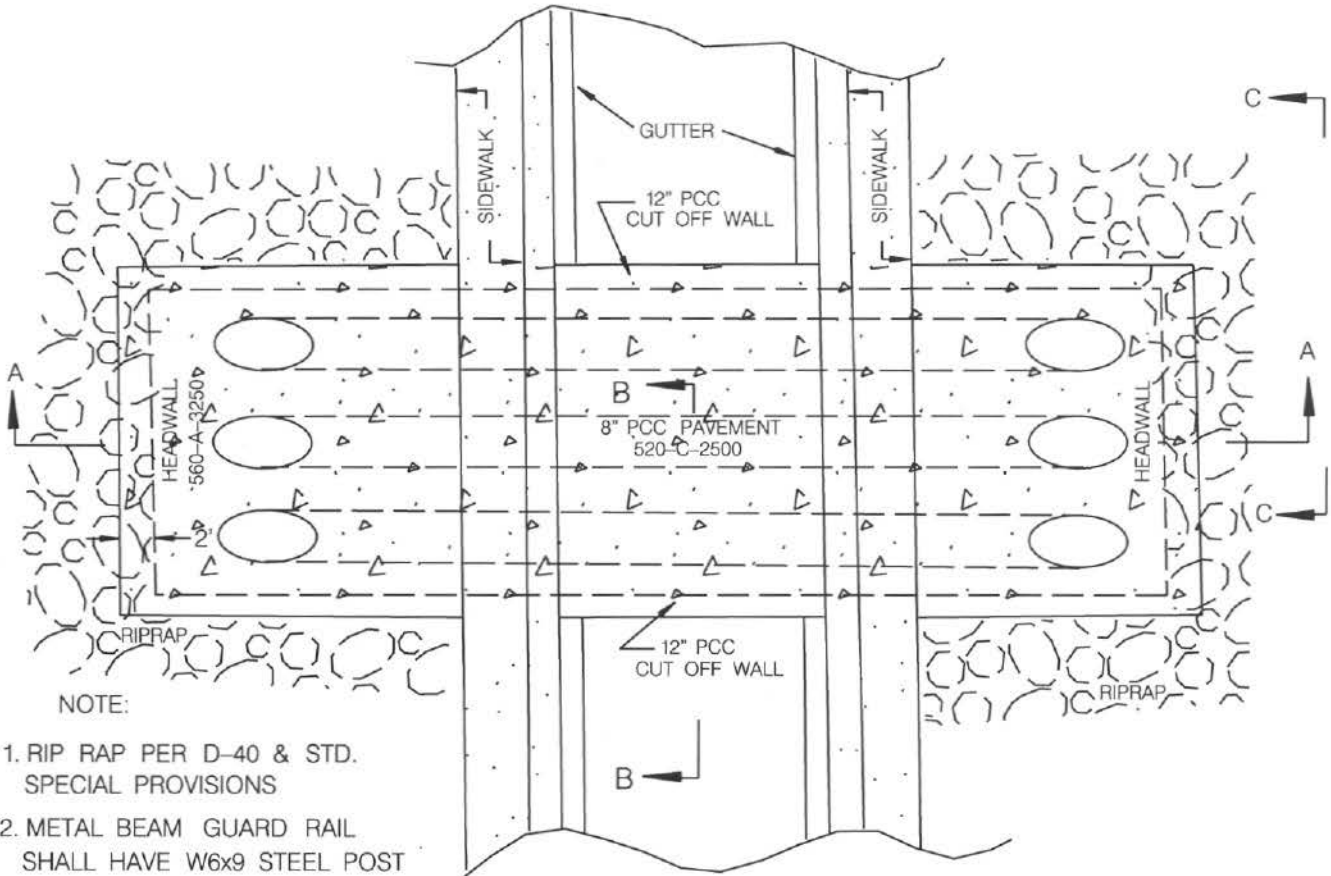
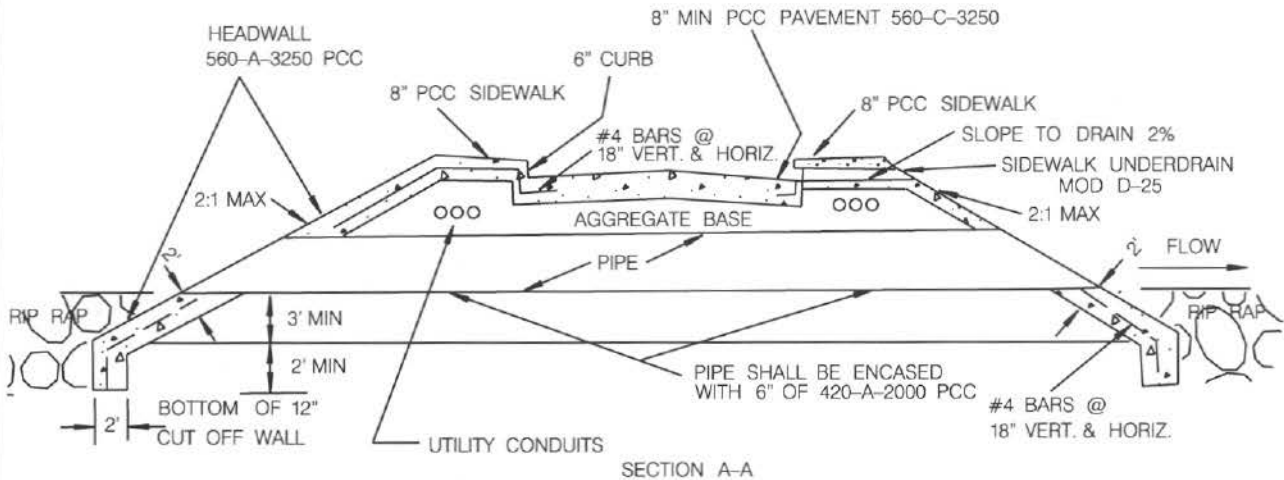
DRAWING D-75

NOTES

Add: 3. Stucco netting shall be galvanized and shall have one and one-half inch (1-1/2") cover.

**SHT. 2 OF 2**

Revision	By	Approved	Date	<b>CITY OF SAN DIEGO - STANDARD DRAWING</b>	CITY OF SAN DIEGO STANDARDS COMMITTEE
ORIGINAL		M. V. Rollinger	5-20-92		
				SUPPLEMENTAL TO REGIONAL STANDARD DRAWING ("D" SERIES )	DRAWING NUMBER <b>SDD-100</b>

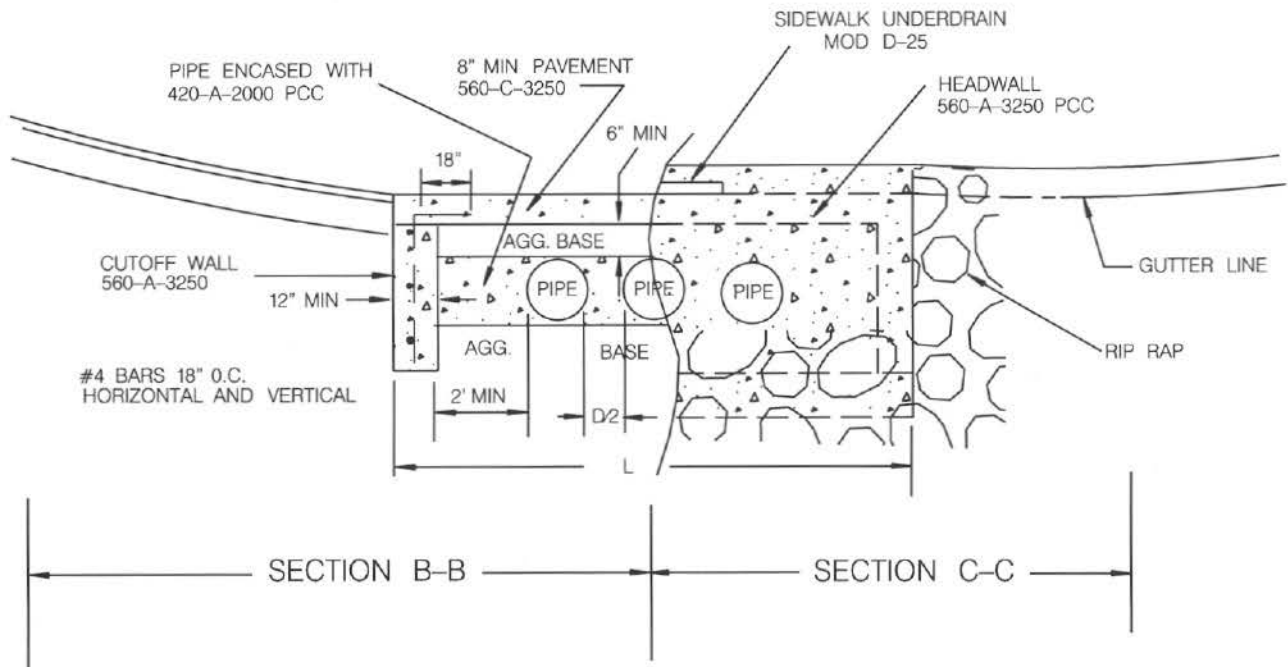


NOTE:

1. RIP RAP PER D-40 & STD. SPECIAL PROVISIONS
2. METAL BEAM GUARD RAIL SHALL HAVE W6x9 STEEL POST
3. SIDEWALK, CURB, PAVEMENT AND HEADWALL'S SHALL BE TIED TOGETHER WITH #4 BARS 18" O.C. HORIZONTAL AND VERTICAL
4. CONCRETE JOINTS PER G-9 AND G-10

SHT. 1 OF 2

Revision	By	Approved	Date	CITY OF SAN DIEGO - STANDARD DRAWING	CITY OF SAN DIEGO STANDARDS COMMITTEE
ORIGINAL		J.P. Casey	6-3-83		
				DRAWING NUMBER <b>SDD-101</b>	



NOTE:

1. HEADWALL LENGTH (L) PER D-30, D-31

SHT. 2 OF 2

Revision	By	Approved	Date	CITY OF SAN DIEGO - STANDARD DRAWING	CITY OF SAN DIEGO STANDARDS COMMITTEE
ORIGINAL		J.P. Casey	6-3-83		
				2-7-95 DATE	
				DRAWING NUMBER	
				<b>SDD-101</b>	