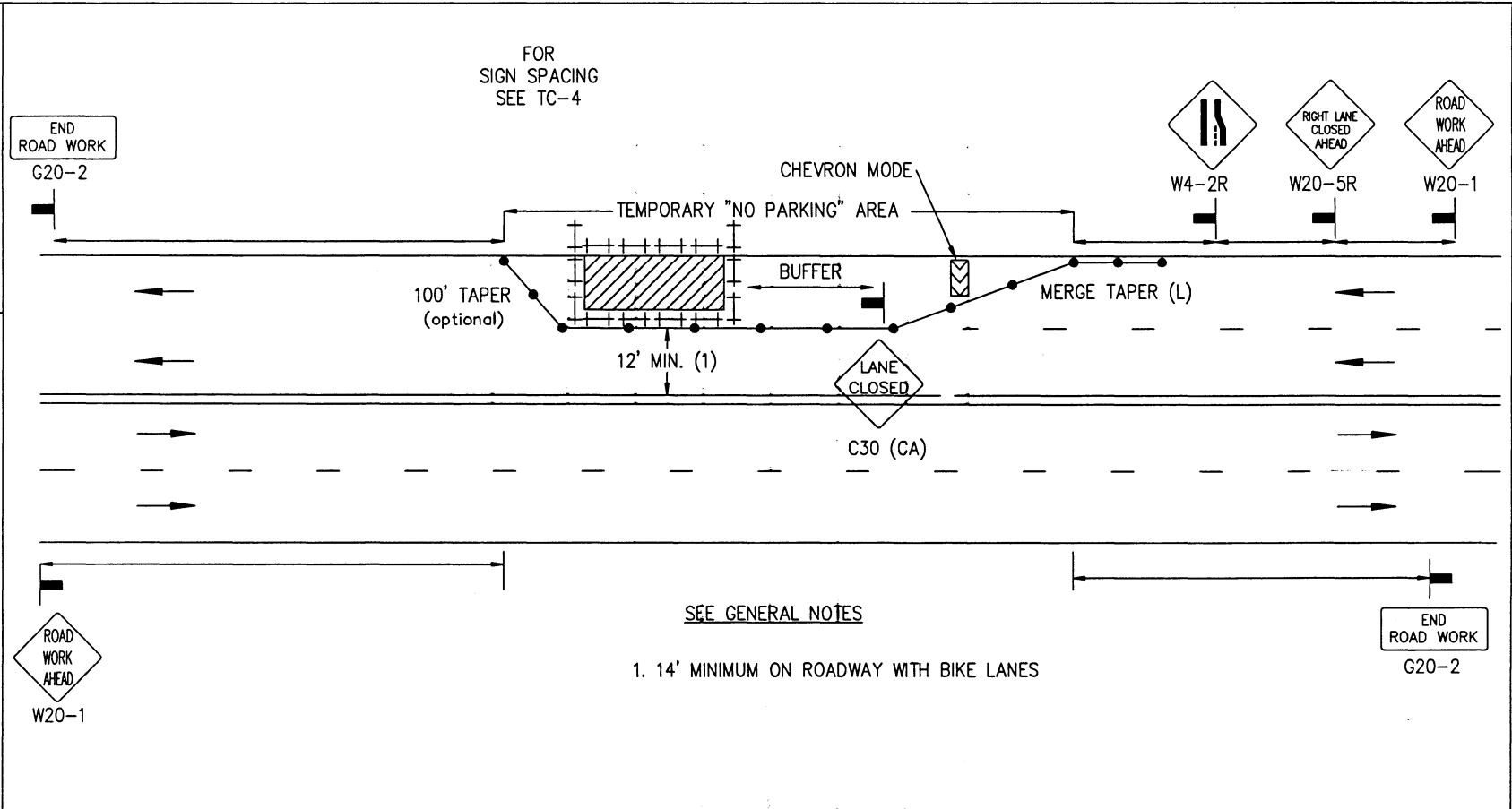


DRAWING NUMBER TC-10

SAN DIEGO REGIONAL STANDARD
 APPENDIX "A"
 SIDE OF ROAD WORK AREA
 MULTILANE TRAFFIC CONTROL WITH CENTERLINE
 RIGHT LANE TRAFFIC CLOSURE - ONE LANE



1. 14' MINIMUM ON ROADWAY WITH BIKE LANES

LEGEND

- CONE
- ⊢ BARRICADE
- FLAGGER
- ▬ SIGN
- ⚡ FLASHING ARROW SIGN
- ▨ WORK AREA
- ⇄ TRAFFIC DIRECTION

AGENCY ENGINEER'S COMMENTS

POSTED SPEED LIMIT	APPROACH SPEED	TAPER LENGTH	SPACING OF CONES	SIGN SPACING	BUFFER LENGTH

GENERAL NOTES

See TC-4 for sign spacing, spacing of cones, and taper and buffer lengths.
 For hours of darkness, change cones to vertical barricades with steady burn lights.
 This plan DOES NOT apply to signalized or multi-way stop intersections. Consult the local jurisdiction when preparing Traffic Control Plans near these intersections.
 This plan MAY NOT apply when the work areas affect bike lanes, sidewalks, pedestrian access and curved or narrow roadways. Consult the approving agency when preparing the Traffic Control Plan or these areas.

Nothing contained on this drawing shall prevent local jurisdictions from modifying, changing or adopting new specifications deemed necessary. Criteria for position, location and use of Traffic Control Devices is solely for the purpose of guidance to assist in the set up of the Traffic Control Plans.

TC-5 is required for all Traffic Control Plans.

SUBMITTED BY:

NAME _____
 COMPANY _____
 ADDRESS _____
 PHONE _____

Revision	By	Approved	Date
ORIGINAL	CRH	<i>[Signature]</i>	4/27/06

AGENCY USE

APPLICANT USE

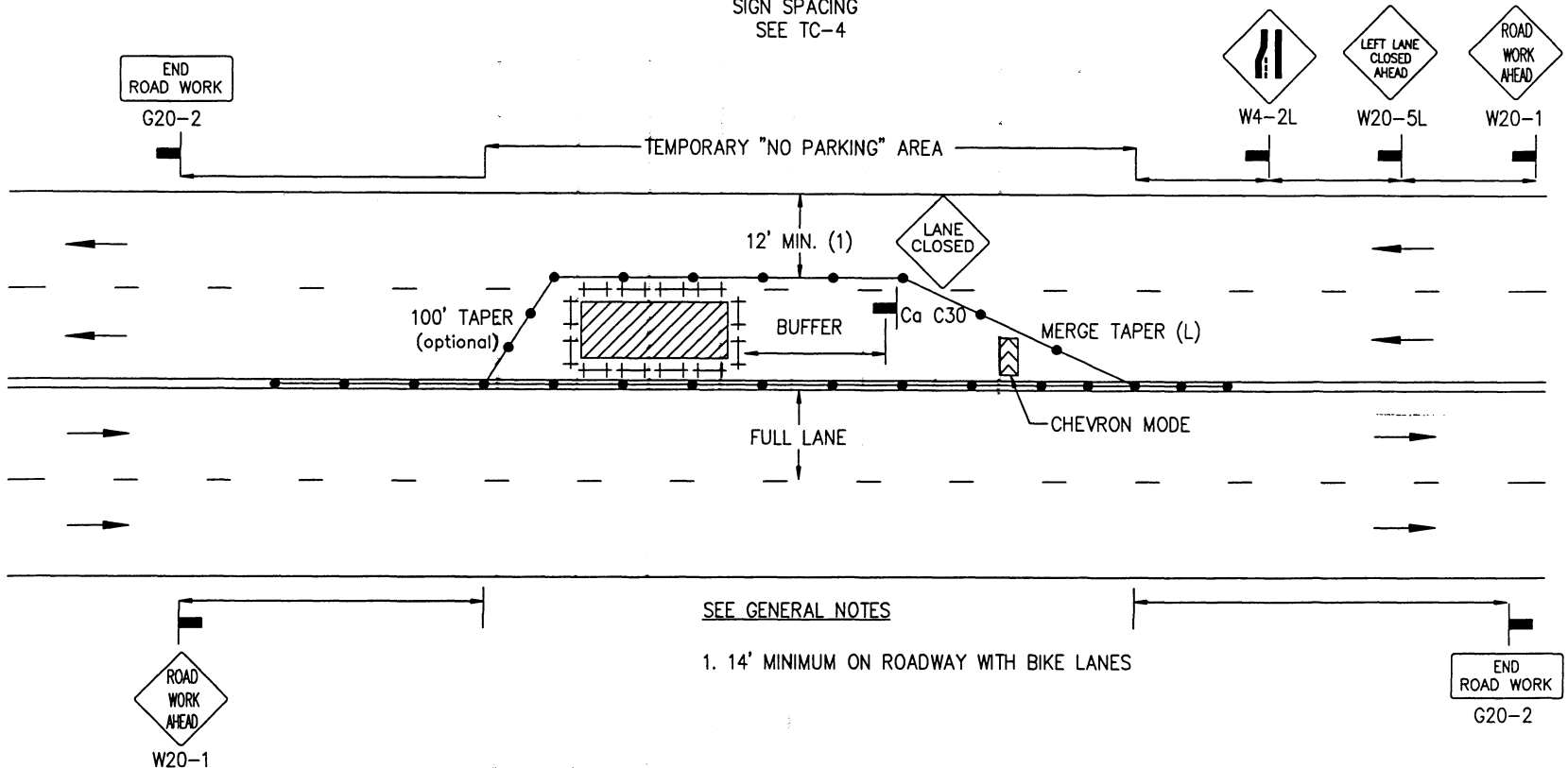
DRAWING NUMBER

TC-12

CENTER OF ROAD WORK AREA
 MULTILANE TRAFFIC CONTROL WITH CENTERLINE LEFT TRAFFIC LANE CLOSURE - ONE LANE

APPENDIX "A"
 SAN DIEGO REGIONAL STANDARD

FOR SIGN SPACING SEE TC-4



LEGEND

- CONE † BARRICADE ■ FLAGGER ▬ SIGN ◻ FLASHING ARROW SIGN ▨ WORK AREA ⇄ TRAFFIC DIRECTION

AGENCY ENGINEER'S COMMENTS

POSTED SPEED LIMIT	APPROACH SPEED	TAPER LENGTH	SPACING OF CONES	SIGN SPACING	BUFFER LENGTH

GENERAL NOTES

See TC-4 for sign spacing, spacing of cones, and taper and buffer lengths.
 For hours of darkness, change cones to vertical barricades with steady burn lights.
 This plan DOES NOT apply to signalized or multi-way stop intersections. Consult the local jurisdiction when preparing Traffic Control Plans near these intersections.
 This plan MAY NOT apply when the work areas affect bike lanes, sidewalks, pedestrian access and curved or narrow roadways. Consult the approving agency when preparing the Traffic Control Plan or these areas.

Nothing contained on this drawing shall prevent local jurisdictions from modifying, changing or adopting new specifications deemed necessary. Criteria for position, location and use of Traffic Control Devices is solely for the purpose of guidance to assist in the set up of the Traffic Control Plans.

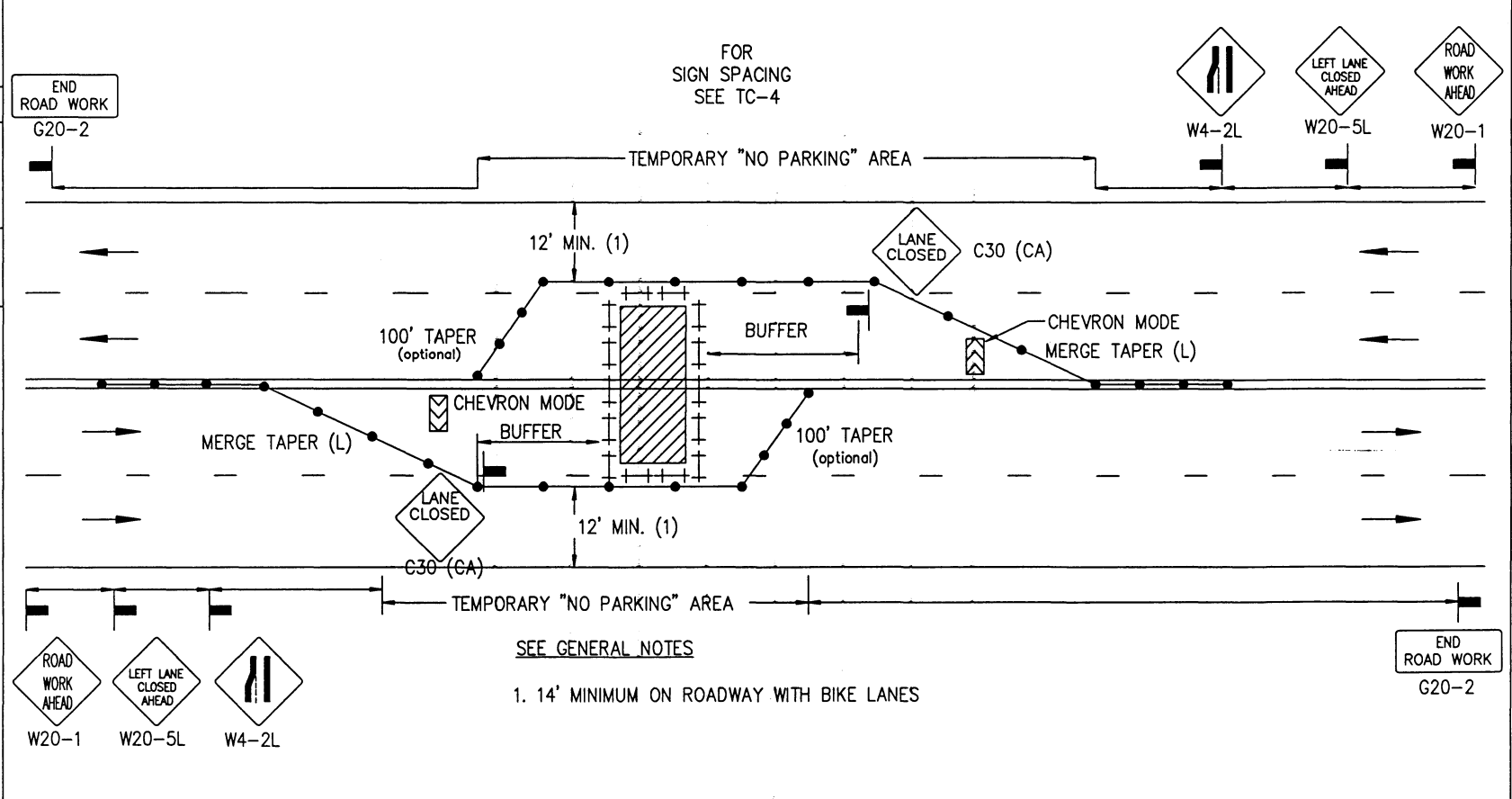
TC-5 is required for all Traffic Control Plans.

SUBMITTED BY:

NAME _____
 COMPANY _____
 ADDRESS _____
 PHONE _____

Revision	By	Date
ORIGINAL	CRH	4/27/06

Revision	By	Approved	Date
DRAWING CRH			4/06
ORIGINAL			4/27/06



APPENDIX "A"
 SAN DIEGO REGIONAL STANDARD
 CENTER OF ROAD WORK AREA
 MULTILANE TRAFFIC CONTROL WITH CENTERLINE
 LEFT TRAFFIC LANE CLOSURE - TWO LANES

LEGEND

- CONE
- ++ BARRICADE
- FLAGGER
- ▬ SIGN
- ▨ FLASHING ARROW SIGN
- ▨ WORK AREA
- TRAFFIC DIRECTION

AGENCY ENGINEER'S COMMENTS

POSTED SPEED LIMIT	APPROACH SPEED	TAPER LENGTH	SPACING OF CONES	SIGN SPACING	BUFFER LENGTH

GENERAL NOTES

See TC-4 for sign spacing, spacing of cones, and taper and buffer lengths.
 For hours of darkness, change cones to vertical barricades with steady burn lights.
 This plan DOES NOT apply to signalized or multi-way stop intersections. Consult the local jurisdiction when preparing Traffic Control Plans near these intersections.
 This plan MAY NOT apply when the work areas affect bike lanes, sidewalks, pedestrian access and curved or narrow roadways. Consult the approving agency when preparing the Traffic Control Plan or these areas.
 Nothing contained on this drawing shall prevent local jurisdictions from modifying, changing or adopting new specifications deemed necessary. Criteria for position, location and use of Traffic Control Devices is solely for the purpose of guidance to assist in the set up of the Traffic Control Plans.
 TC-5 is required for all Traffic Control Plans.

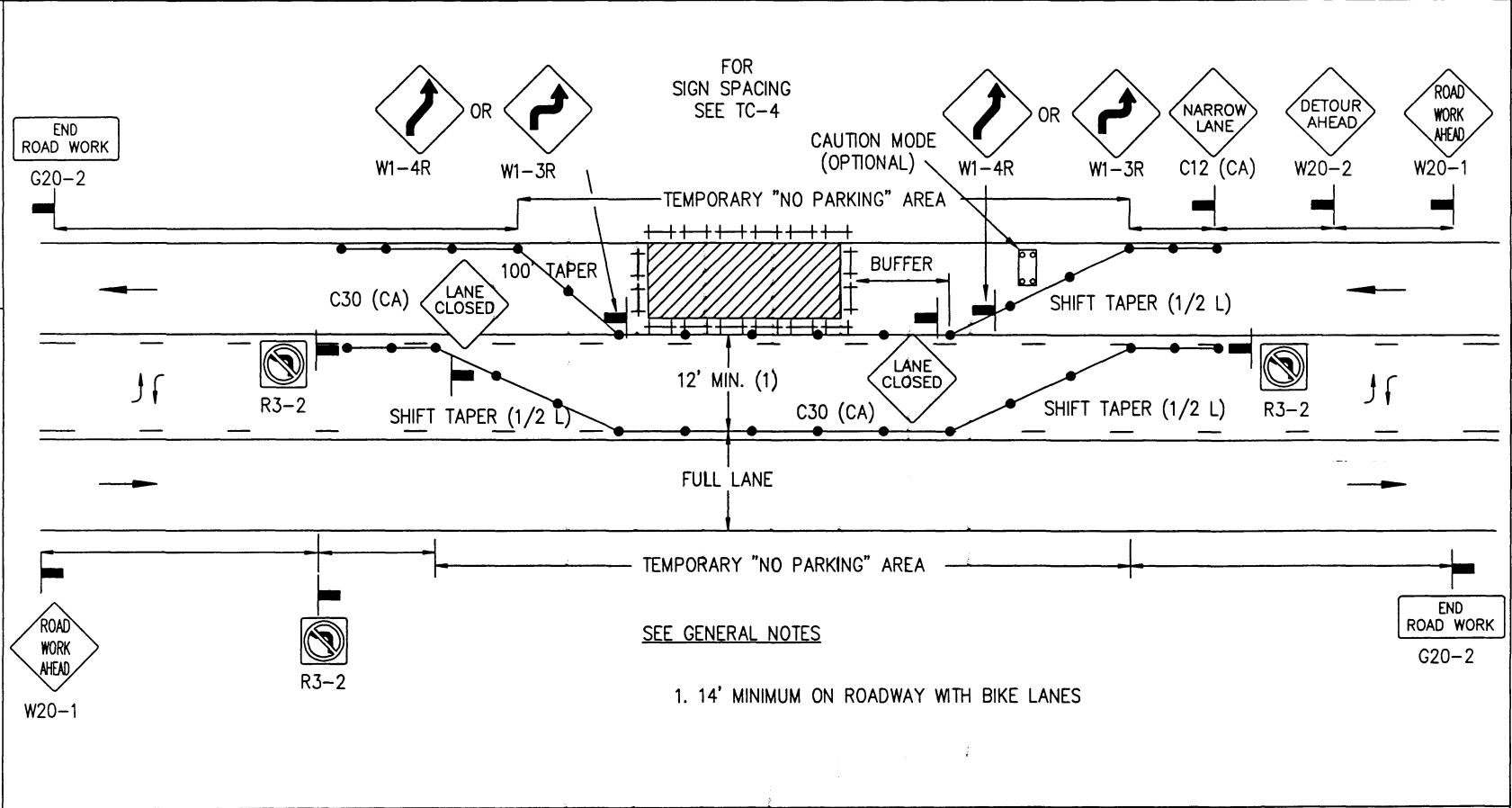
SUBMITTED BY:
 NAME _____
 COMPANY _____
 ADDRESS _____
 PHONE _____

DRAWING NUMBER TC-13

DRAWING NUMBER

TC-14

SAN DIEGO REGIONAL STANDARD
 APPENDIX "A"
 SIDE OF ROAD WORK AREA
 MULTILANE TRAFFIC CONTROL WITH TWO WAY LEFT TURN
 RIGHT LANE TRAFFIC CLOSURE - ONE LANE



LEGEND

- CONE
- ++ BARRICADE
- FLAGGER
- SIGN
- ◻ FLASHING ARROW SIGN
- ▨ WORK AREA
- TRAFFIC DIRECTION

AGENCY ENGINEER'S COMMENTS

POSTED SPEED LIMIT	APPROACH SPEED	TAPER LENGTH	SPACING OF CONES	SIGN SPACING	BUFFER LENGTH

GENERAL NOTES

See tc-4 for sign spacing, spacing for cones, and taper and buffer lengths.
 For hours of darkness, change cones to vertical barricades with steady burn lights.
 This plan DOES NOT apply to signalized or multi-way stop intersections. Consult the local jurisdiction when preparing Traffic Control Plans near these intersections.
 This plan MAY NOT apply when the work areas affect bike lanes, sidewalks, pedestrian access and curved or narrow roadways. Consult the approving agency when preparing the Traffic Control Plan or these areas.
 Nothing contained on this drawing shall prevent local jurisdictions from modifying, changing or adopting new specifications deemed necessary. Criteria for position, location and use of Traffic Control Devices is solely for the purpose of guidance to assist in the set up of the Traffic Control Plans.
 TC-5 is required for all Traffic Control Plans.

SUBMITTED BY:

NAME _____

COMPANY _____

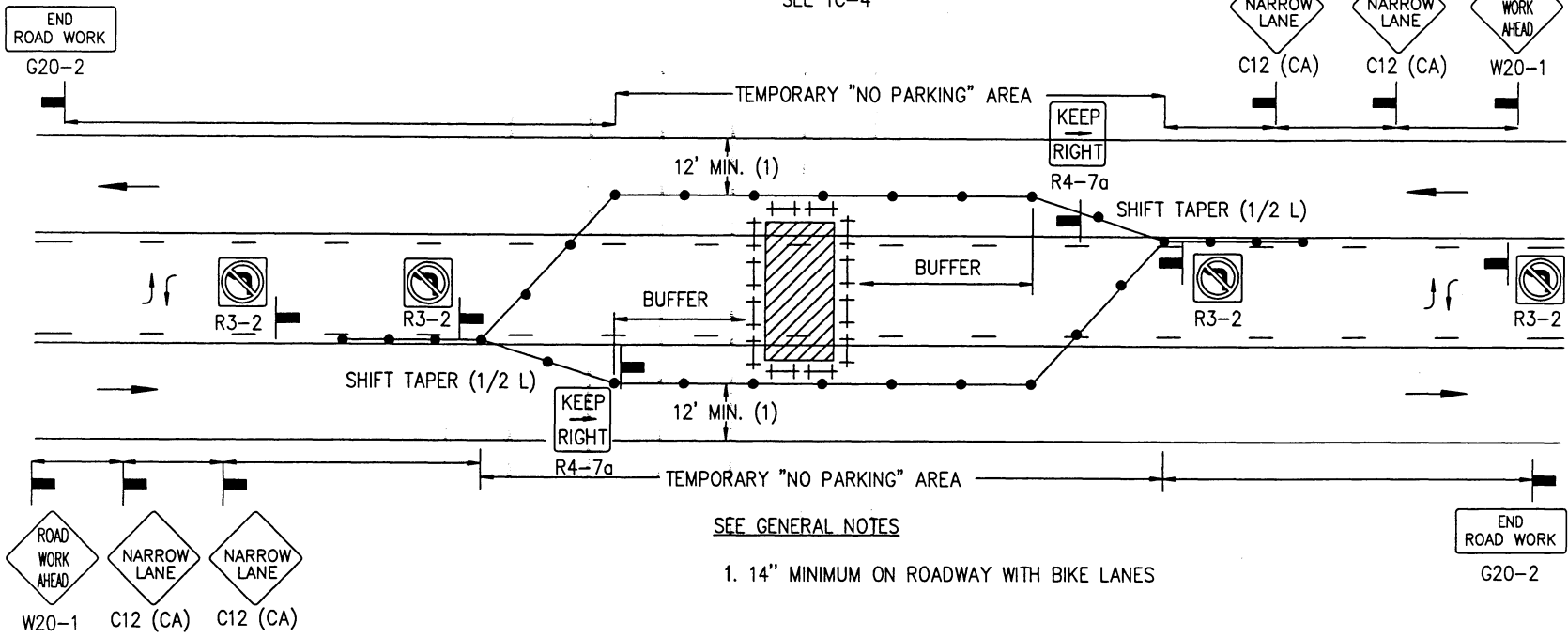
ADDRESS _____

PHONE _____

Revision	By	Approved	Date
ORIGINAL	CRH	<i>[Signature]</i>	4/27/06

Revision	By	Approved	Date
ORIGINAL	DRH		4/27/06

FOR
SIGN SPACING
SEE TC-4



SEE GENERAL NOTES

1. 14" MINIMUM ON ROADWAY WITH BIKE LANES

LEGEND

- CONE ++ BARRICADE ■ FLAGGER ▬ SIGN ☒ FLASHING ARROW SIGN ▨ WORK AREA ⇄ TRAFFIC DIRECTION

AGENCY ENGINEER'S COMMENTS

POSTED SPEED LIMIT	APPROACH SPEED	TAPER LENGTH	SPACING OF CONES	SIGN SPACING	BUFFER LENGTH

GENERAL NOTES

See TC-4 for sign spacing, spacing of cones, taper and buffer lengths.
For hours of darkness, change cones to vertical barricades with steady burn lights.

This plan DOES NOT apply to signalized or multi-way stop intersections. Consult the local jurisdiction when preparing Traffic Control Plans near these intersections.

This plan MAY NOT apply when the work areas affect bike lanes, sidewalks, pedestrian access and curved or narrow roadways. Consult the approving agency when preparing the Traffic Control Plan or these areas.

Nothing contained on this drawing shall prevent local jurisdictions from modifying, changing or adopting new specifications deemed necessary. Criteria for position, location and use of Traffic Control Devices is solely for the purpose of guidance to assist in the set up of the Traffic Control Plans.

TC-5 is required for all Traffic Control Plans.

SUBMITTED BY:

NAME _____
 COMPANY _____
 ADDRESS _____
 PHONE _____

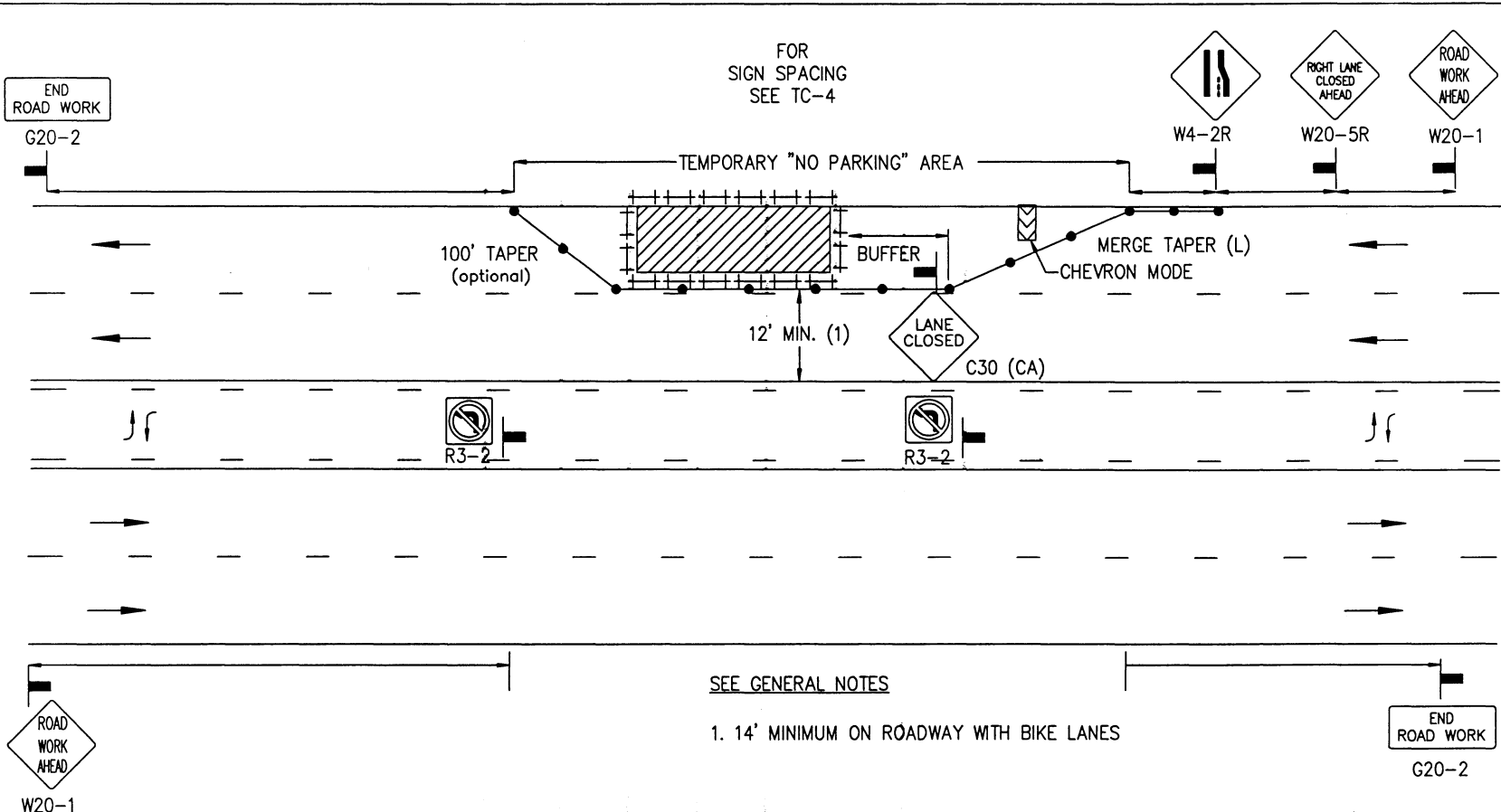
APPENDIX "A"
 SAN DIEGO REGIONAL STANDARD
 CENTER OF ROAD WORK AREA
 MULTILANE TRAFFIC CONTROL WITH CENTERLINE
 LEFT TRAFFIC LANE CLOSURE - ONE LANE

DRAWING NUMBER
 TC-15

DRAWING NUMBER TC-16

SIDE OF ROAD WORK AREA
 MULTILANE TRAFFIC CONTROL WITH TWO WAY LEFT TURN
 RIGHT TRAFFIC LANE CLOSURE - ONE LANE

APPENDIX "A"
 SAN DIEGO REGIONAL STANDARD



LEGEND

- CONE
- ++ BARRICADE
- FLAGGER
- SIGN
- ⚡ FLASHING ARROW SIGN
- ▨ WORK AREA
- TRAFFIC DIRECTION

AGENCY ENGINEER'S COMMENTS

POSTED SPEED LIMIT	APPROACH SPEED	TAPER LENGTH	SPACING OF CONES	SIGN SPACING	BUFFER LENGTH

GENERAL NOTES

See TC-4 for sign spacing, spacing of cones, and taper and buffer lengths.
 For hours of darkness, change cones to vertical barricades with steady burn lights.

This plan DOES NOT apply to signalized or multi-way stop intersections. Consult the local jurisdiction when preparing Traffic Control Plans near these intersections.

This plan MAY NOT apply when the work areas affect bike lanes, sidewalks, pedestrian access and curved or narrow roadways. Consult the approving agency when preparing the Traffic Control Plan or these areas.

Nothing contained on this drawing shall prevent local jurisdictions from modifying, changing or adopting new specifications deemed necessary. Criteria for position, location and use of Traffic Control Devices is solely for the purpose of guidance to assist in the set up of the Traffic Control Plans.

TC-5 is required for all Traffic Control Plans.

SUBMITTED BY:

NAME _____

COMPANY _____

ADDRESS _____

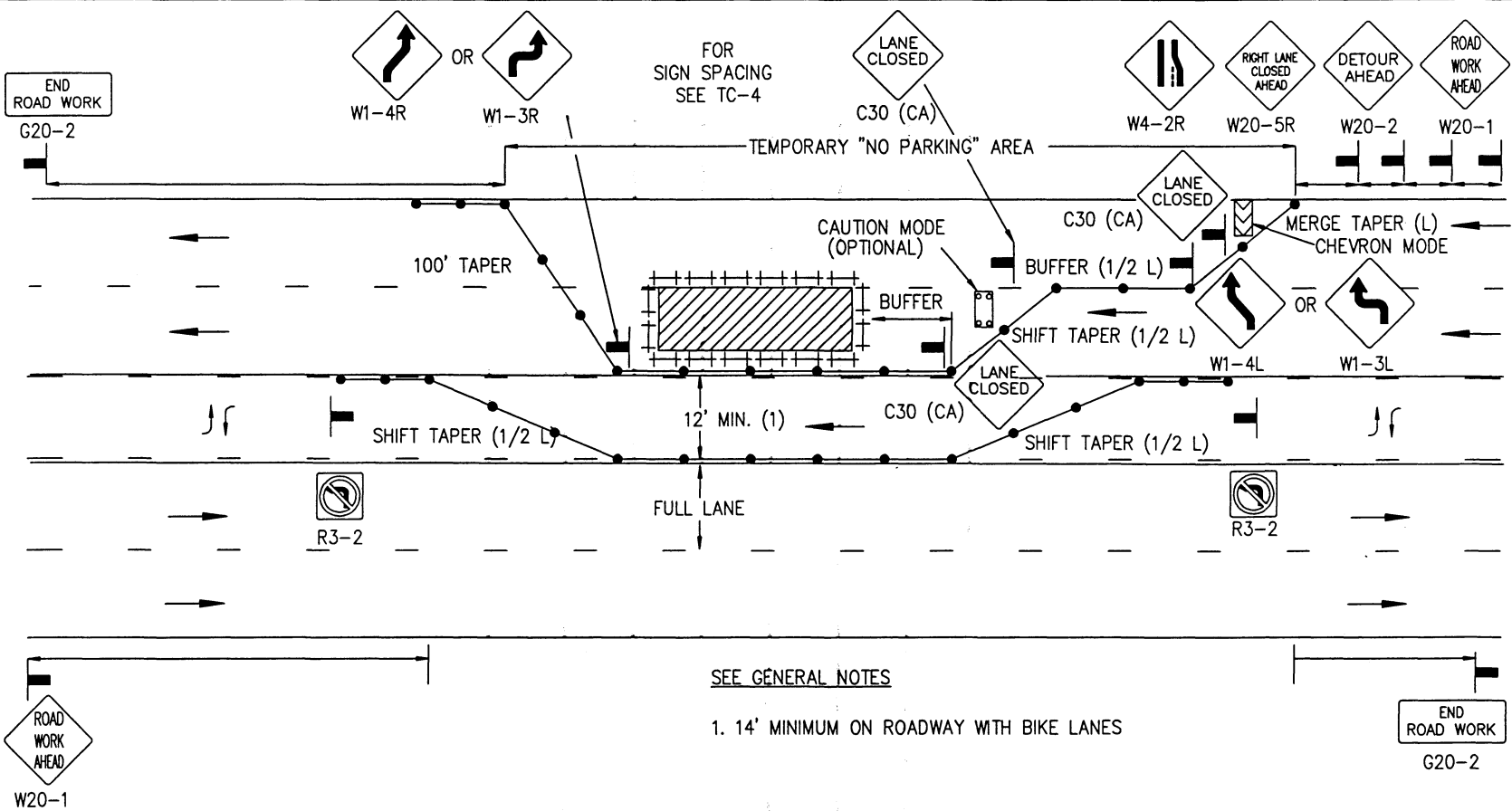
PHONE _____

Revision	By	Approved	Date
ORIGINAL	CRH	<i>[Signature]</i>	4/27/06

AGENCY USE

APPLICANT USE

Revision	By	Approved	Date
DRAWING CRH			4/06
ORIGINAL			4/27/06



SEE GENERAL NOTES

1. 14' MINIMUM ON ROADWAY WITH BIKE LANES

LEGEND

- CONE ++ BARRICADE ■ FLAGGER — SIGN □ FLASHING ARROW SIGN ▨ WORK AREA ⇄ TRAFFIC DIRECTION

AGENCY ENGINEER'S COMMENTS

SUBMITTED BY:

NAME _____

COMPANY _____

ADDRESS _____

PHONE _____

POSTED SPEED LIMIT	APPROACH SPEED	TAPER LENGTH	SPACING OF CONES	SIGN SPACING	BUFFER LENGTH

GENERAL NOTES

See TC-4 for sign spacing, spacing of cones, taper and buffer lengths.

For hours of darkness, change cones to vertical barricades with steady burn lights.

This plan DOES NOT apply to signalized or multi-way stop intersections. Consult the local jurisdiction when preparing Traffic Control Plans near these intersections.

This plan MAY NOT apply when the work areas affect bike lanes, sidewalks, pedestrian access and curved or narrow roadways. Consult the approving agency when preparing the Traffic Control Plan of these areas.

Nothing contained on this drawing shall prevent local jurisdictions from modifying, changing or adopting new specifications deemed necessary. Criteria for position, location and use of Traffic Control Devices is solely for the purpose of guidance to assist in the set up of the Traffic Control Plans.

TC-5 is required for all Traffic Control Plans.

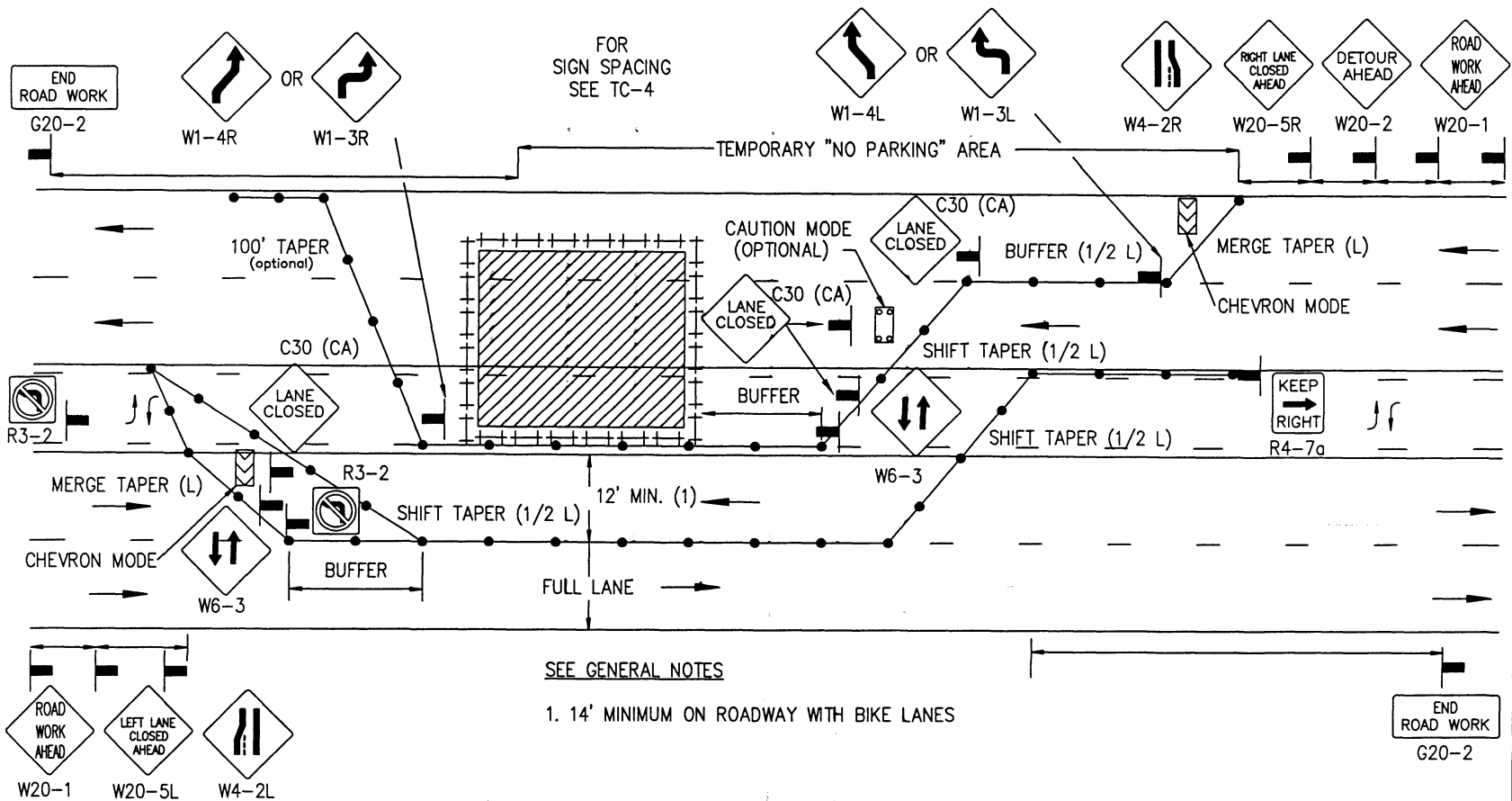
APPENDIX "A"
 SAN DIEGO REGIONAL STANDARD
 CENTER OF ROAD WORK AREA
 MULTILANE TRAFFIC CONTROL WITH TWO WAY LEFT TURN
 RIGHT TRAFFIC LANE CLOSURE - TWO LANES

DRAWING NUMBER
 TC-17

DRAWING NUMBER
TC-18

SIDE OF ROAD WORK AREA
MULTILANE TRAFFIC CONTROL WITH TWO WAY LEFT TURN
RIGHT TRAFFIC LANE CLOSURE - THREE LANES

APPENDIX "A"
SAN DIEGO REGIONAL STANDARD



LEGEND

- CONE ++ BARRICADE ■ FLAGGER ▬ SIGN [] FLASHING ARROW SIGN [/ /] WORK AREA ⇄ TRAFFIC DIRECTION

AGENCY ENGINEER'S COMMENTS

AGENCY USE

POSTED SPEED LIMIT	APPROACH SPEED	TAPER LENGTH	SPACING OF CONES	SIGN SPACING	BUFFER LENGTH

GENERAL NOTES

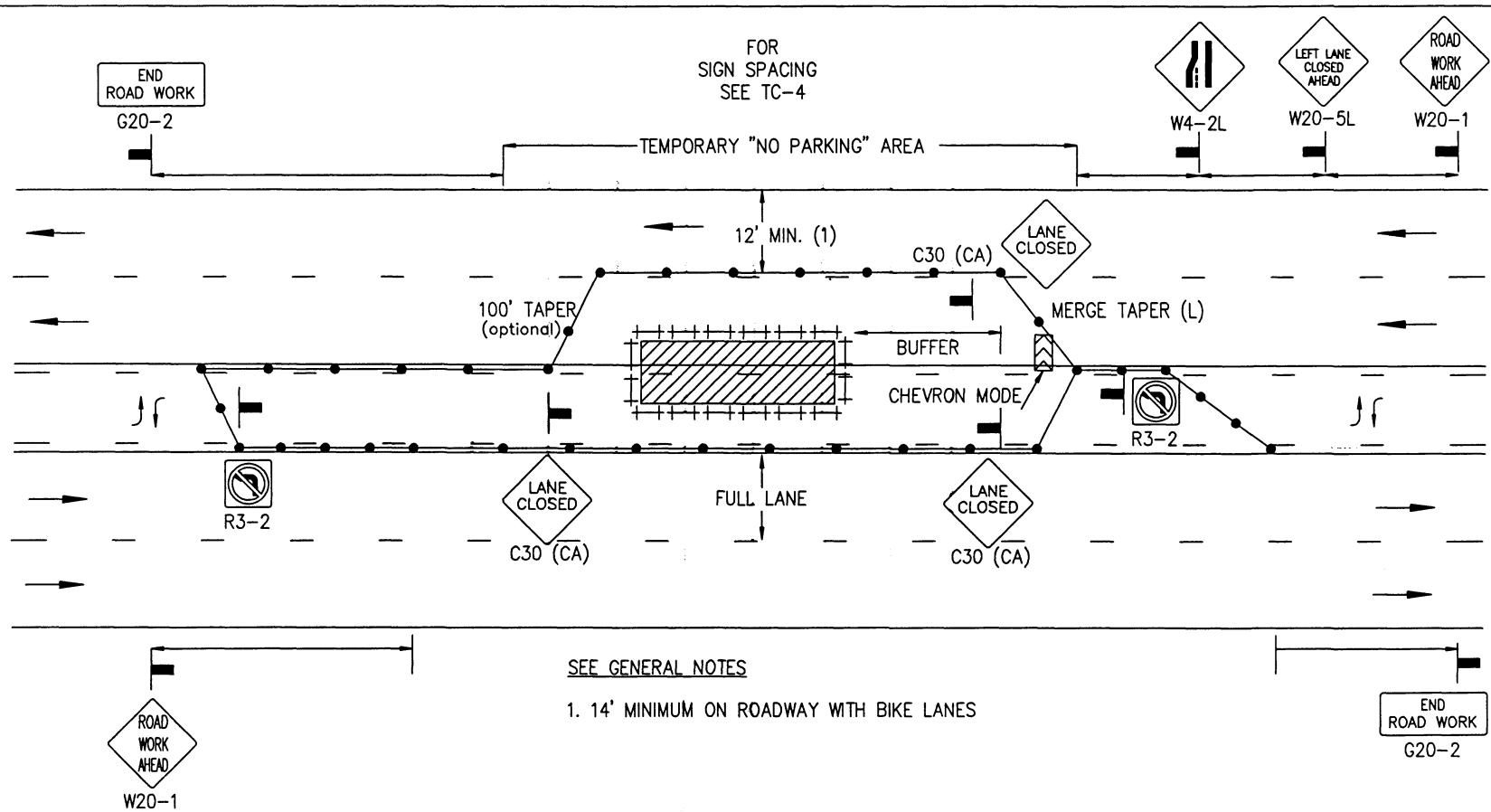
See TC-4 for sign spacing, spacing of cones, and taper and buffer lengths.
 For hours of darkness, change cones to vertical barricades with steady burn lights.
 This plan DOES NOT apply to signalized or multi-way stop intersections. Consult the local jurisdiction when preparing Traffic Control Plans near these intersections.
 This plan MAY NOT apply when the work areas affect bike lanes, sidewalks, pedestrian access and curved or narrow roadways. Consult the approving agency when preparing the Traffic Control Plan or these areas.
 Nothing contained on this drawing shall prevent local jurisdictions from modifying, changing or adopting new specifications deemed necessary. Criteria for position, location and use of Traffic Control Devices is solely for the purpose of guidance to assist in the set up of the Traffic Control Plans.
 TC-5 is required for all Traffic Control Plans.

APPLICANT USE

SUBMITTED BY:
 NAME _____
 COMPANY _____
 ADDRESS _____
 PHONE _____

Revision	By	Approved	Date
DRAWING	CHH		4/06
ORIGINAL			4/27/06

Revision	By	Date
DRAWING CRH	Approved	4/06
ORIGINAL		4/27/06



SEE GENERAL NOTES

1. 14' MINIMUM ON ROADWAY WITH BIKE LANES

LEGEND

- CONE †† BARRICADE ■ FLAGGER ▬ SIGN ◀▶ FLASHING ARROW SIGN ▨ WORK AREA → TRAFFIC DIRECTION

AGENCY ENGINEER'S COMMENTS

SUBMITTED BY:

NAME _____

COMPANY _____

ADDRESS _____

PHONE _____

POSTED SPEED LIMIT	APPROACH SPEED	TAPER LENGTH	SPACING OF CONES	SIGN SPACING	BUFFER LENGTH

GENERAL NOTES

See TC-4 for sign spacing, spacing for cones, and taper and buffer lengths.

For hours of darkness, change cones to vertical barricades with steady burn lights.

This plan DOES NOT apply to signalized or multi-way stop intersections. Consult the local jurisdiction when preparing Traffic Control Plans near these intersections.

This plan MAY NOT apply when the work areas affect bike lanes, sidewalks, pedestrian access and curved or narrow roadways. Consult the approving agency when preparing the Traffic Control Plan or these areas.

Nothing contained on this drawing shall prevent local jurisdictions from modifying, changing or adopting new specifications deemed necessary. Criteria for position, location and use of Traffic Control Devices is solely for the purpose of guidance to assist in the set up of the Traffic Control Plans.

TC-5 is required for all Traffic Control Plans.

AGENCY USE

APPLICANT USE

APPENDIX "A"
 SAN DIEGO REGIONAL STANDARD
 CENTER OF ROAD WORK AREA
 MULTILANE TRAFFIC CONTROL WITH TWO WAY LEFT TURN
 LEFT TRAFFIC LANE CLOSURE - TWO LANES

DRAWING NUMBER TC-19