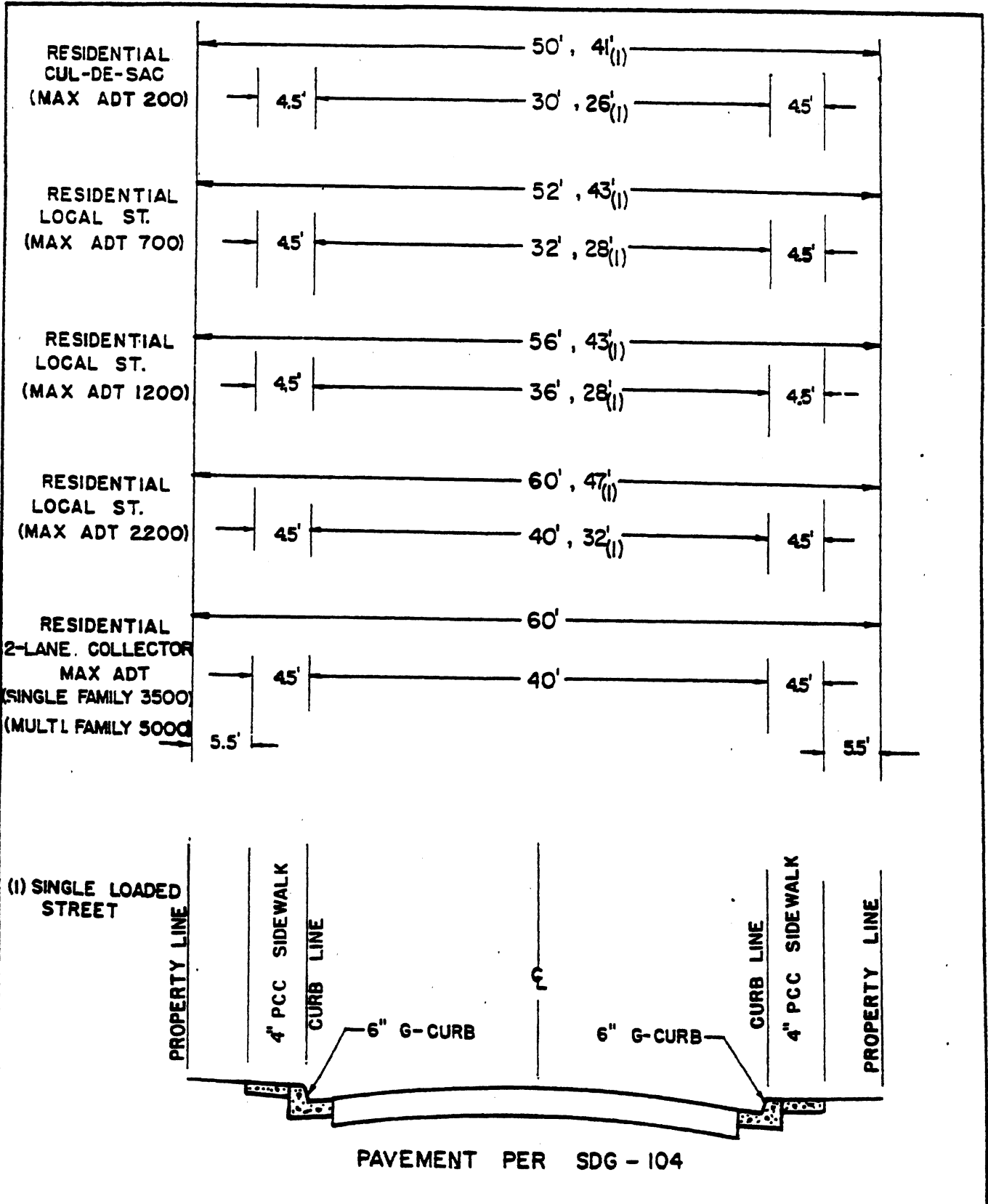


APPENDIX "C"

CITY OF SAN DIEGO DESIGN STANDARDS

DESIGN STANDARDS

REVISION	BY	APPROVED	DATE	CITY OF SAN DIEGO - STANDARD DRAWING	DWG. NO.
				DESIGN STANDARDS	SDDS



REVISION	BY	APPROVED	DATE
		<i>J. [Signature]</i>	11-8-95

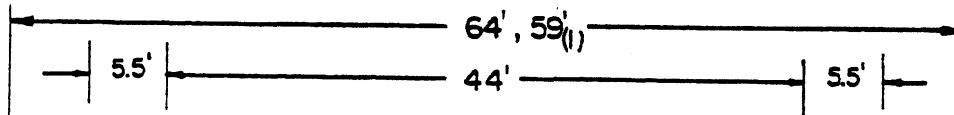
CITY OF SAN DIEGO - STANDARD DRAWING

STANDARD STREET SECTION
RESIDENTIAL STREETS

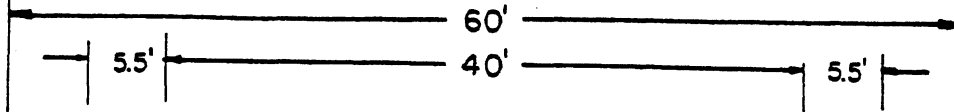
DWG. NO.

SDDS-102

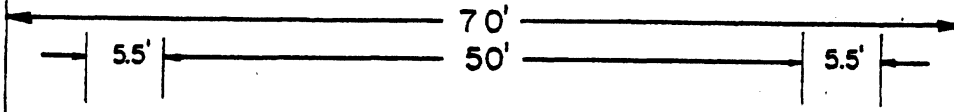
INDUSTRIAL
LOCAL STREET
(MAX ADT 2000)



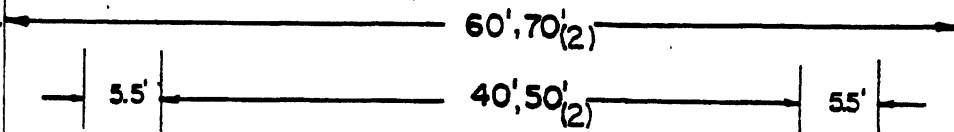
COMMERCIAL
2-LANE COLLECTOR
(MAX ADT 5000)



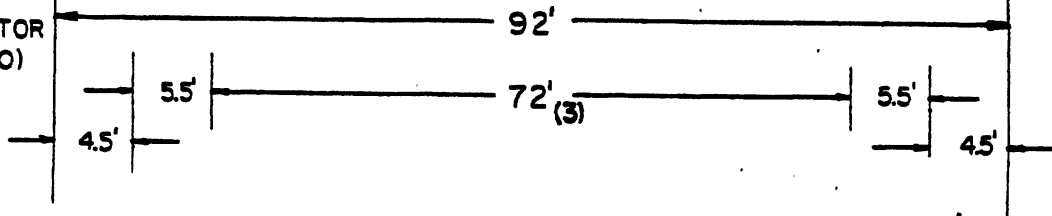
INDUSTRIAL
2-LANE COLLECTOR
(MAX ADT 5000)



NO FRONTING PROPERTY
2-LANE COLLECTOR
(MAX ADT 7500)



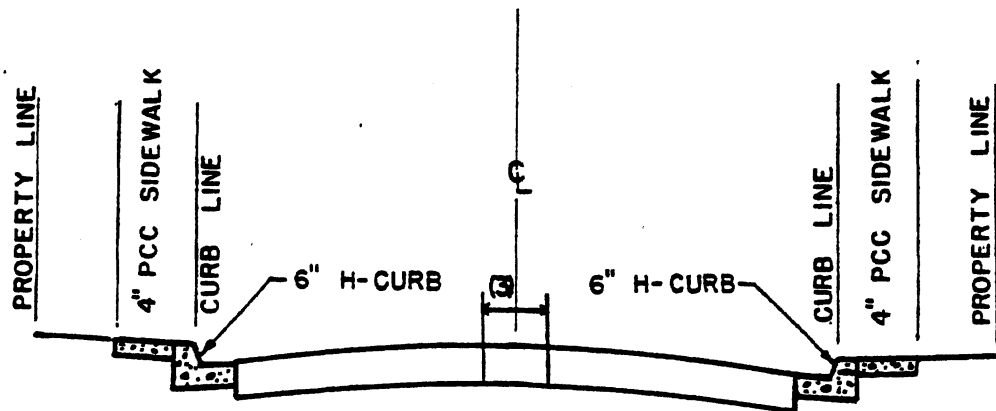
4-LANE COLLECTOR
(MAX ADT 15,000)



(1) SINGLE LOADED
STREET

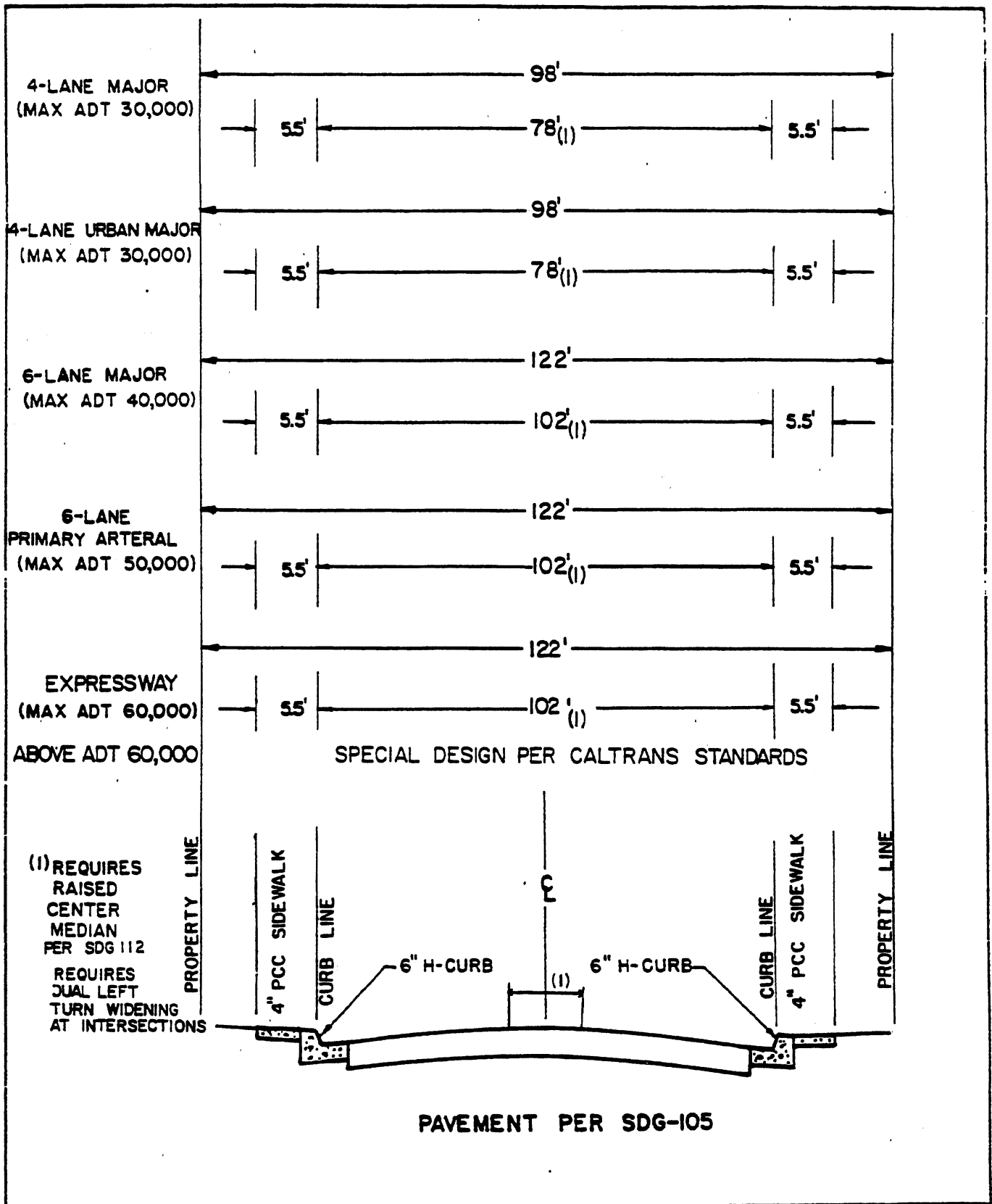
(2) INDUSTRIAL ZONE

(3) REQUIRES RAISED
CENTER MEDIAN
PER SDG-112

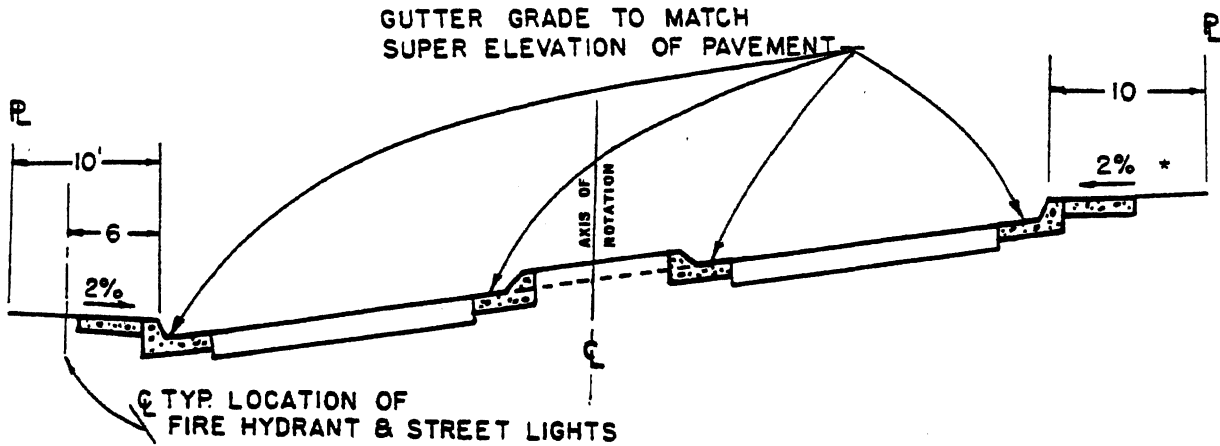


PAVEMENT PER SDG 105

REVISION	BY	APPROVED	DATE	CITY OF SAN DIEGO - STANDARD DRAWING	DWG. NO.
		<i>[Signature]</i>	11-6-87	STANDARD STREET SECTION INDUSTRIAL, COMMERCIAL, COLLECTOR STREETS	SDDS-103



REVISION	BY	APPROVED	DATE	CITY OF SAN DIEGO - STANDARD DRAWING	DWG. NO.
		<i>J. G. [Signature]</i>	11-8-88	STANDARD STREET SECTION MAJOR & PRIMARY ARTERIAL STREETS	SDDS-104



NOTE:

- 1) SUPERELEVATION SHALL EXTEND FROM CURB TO CURB REGARDLESS OF TYPE OF MEDIAN.
- * 2) REFER TO DRAINAGE DESIGN MANUAL FOR CONTROL OF STORM AND IRRIGATION RUN OFF.

SPECIFICATION REFERENCE	CITY OF SAN DIEGO	STANDARD DRAWING
BY	APPROVED	DATE
	TYPICAL STREET SECTION IN SUPERELEVATION	DRAWING NO. SDDS-105

