

Cross-section of Grape  
" " " Ivy St.  
from Albatross to 175<sup>th</sup> E of 1<sup>st</sup>

Cross-section of Dale St.  
" " " <sup>Amherst to Dartmouth</sup> Amherst "  
" " " 28 to Ferny  
" " " Quince St.

San Diego City Engineers Office  
City Hall, San Diego, Cal.

400

LEVEL

F.B. 146

Table showing the distance, latitude and departure in running 80 chains at any course from 1 to 60 minutes.

MINUTES	LKS.	MINUTES	LKS.	MINUTES	LKS.
1	2 1/3	21	49	41	95 2/3
2	4 2/3	22	51 1/3	42	98
3	7	23	53 2/3	43	100 1/3
4	9 1/3	24	56	44	102 2/3
5	11 2/3	25	58 1/3	45	105
6	14	26	60 2/3	46	107 1/3
7	16 1/3	27	63	47	109 2/3
8	18 2/3	28	65 1/3	48	112
9	21	29	67 2/3	49	114 1/3
10	23 1/3	30	70	50	116 2/3
11	25 2/3	31	72 1/3	51	119
12	28	32	74 2/3	52	121 1/3
13	30 1/3	33	77	53	123 2/3
14	32 2/3	34	79 1/3	54	126
15	35	35	81 2/3	55	128 1/3
16	37 1/3	36	84	56	130 2/3
17	39 2/3	37	86 1/3	57	133
18	42	38	88 2/3	58	135 1/3
19	44 1/3	39	91	59	137 2/3
20	46 2/3	40	93 1/3	60	140

Return to City Engineers Office

City Hall, San Diego, Cal.

TABLE FOR RUNNING ON SLOPES.

In the following table the first column shows the angle, the second the number of links to be run on the slopes, to make one chain, horizontal measurement.

Angle	COR. IN LINKS	Angle	COR. IN LINKS	Angle	COR. IN LINKS	Angle	COR. IN LINKS
0		0		0		0	
4	0.24	11	1.88	18	5.14	25	10.54
5	0.38	12	2.24	19	5.76	26	11.26
6	0.55	13	2.63	20	6.42	27	12.24
7	0.76	14	3.06	21	7.11	28	13.37
8	0.98	15	3.53	22	7.85	29	14.34
9	1.24	16	4.02	23	8.64	30	15.47
10	1.55	17	4.56	24	9.47	35	22.07

Return to City Engineers Office  
City Hall, San Diego, Cal.

MICROFILMED

DEC 7 1964



X section Grape St. from Cal. to Park 1-43 83.84

Ivy Str Albatross to 1st Str 44-50

Amherst Str EL 28<sup>th</sup> to WL Fern Str 51.62

Dale " Amherst to Dartmouth 68-74

Quince, WL 5<sup>th</sup> to EL 4<sup>th</sup> Str. 81.82

Note

Levelling started from old bench on pole at Calif St. and run to a bench at State<sup>2</sup> <sup>of Hawthorne</sup>, the elevations being figured from State St back to Calif St. El. at Calif St as noted in bench book was 16.835

Xsection Grape St. From 1

E. line Calif. St. to Park. —

10/13/04 {Hatch  
Remoie  
Lambert

B.M. 9.295 {California St.  
E. edge of Manhole  
28.02 Rim} 18.725

Spk in Tel Pole (Poor Condition) 11.29 16.77

E line California St.

S 7.8 20.2

Ch 7.9 20.12

1/4 9.5 18.52

C 15.0 13.02

9' 15.4 12.02

1/4 11.5 16.52

Ch 8.2 19.82

N 8.0 20.02

25 ft E of Calif St

N 5.3 22.72

Ch 7.3 19.72

1/4 10.0 18.02



2802

8'	10.3	17.72
C	13.5	14.52
1/4	9.7	18.32
cb.	10.1	17.92
S.	7.7	20.32

50 ft E of Calif St

S.	8.0	20.02
cb.	9.9	18.12
1/4	9.9	18.12
C	9.9	18.12
1/4	8.5	19.52
cb.	3.7	22.32
N	3.7	24.32

75 ft E of Calif St

N	2.2	25.82
cb.	4.3	23.72
1/4	6.6	21.42

2802

2

C	8.0	20.02
1/4	8.1	19.92
cb.	7.7	20.32
S	7.8	20.22

100 ft E of Calif St

26'	5.2	22.82
S	7.0	21.02
cb.	6.9	21.12
1/4	6.7	21.32
C	6.2	21.82
1/4	5.3	22.72
cb.	4.1	23.92
N	1.3	26.72

125 ft E of Calif St

N	0.6	27.42
cb.	2.2	25.82
1/4	3.5	24.52

2802

C	4.8	23.22
1/4	5.9	22.12
cb.	6.2	21.82
S	6.2	21.82
10	5.9	22.12
20	3.2	24.8
150 ft E of Calif St		
30'	2.8	25.2
15'	4.6	23.42
S	5.7	22.62
cb.	5.1	22.92
1/4	4.9	23.12
C	3.5	24.5
1/4	2.0	26.02
cb.	+0.2	28.2
T.P.	10.44	38375 0085
N	8.2	30.2

38375

175 ft E of Calif St = White Arctic

N	1.9	33.5
cb.	6.4	32.0
1/4	9.4	28.0
C	10.5	27.9
B.M.	E edge ManHole Rim of Arctic St on White	7.18 31.195
1/4	14.8	23.6
cb.	14.8	23.6
S	14.4	24.0
20'	13.7	24.7
33'	12.0	26.4
W of Arctic St.		
30'	12.1	26.3
10'	13.4	25.0
S	13.2	24.8
cb.	13.9	24.5
1/4	13.3	25.1



38.375

7'	14.0	24.4
C	11.1	27.3
1/4	9.4	29.0
cb.	5.9	32.5
N	5.0	33.4

W 1/4 Arctic St.

N	5.2	33.2
cb.	6.1	32.3
1/4	7.1	31.3
C	13.3	25.1
7'	9.2	29.2
1/4	10.4	28.0
cb.	10.1	28.3
S	10.4	28.0
20'	9.9	28.5

7 ft E of W 1/4 Arctic

S	5.5	32.9
---	-----	------

38.375

cb.	5.5	32.9
1/4	5.4	33.0
C	5.7	33.0
1/4	5.3	33.1
cb.	5.7	33.0
N	5.5	32.9

C Arctic St.

N	4.6	33.8
cb.	4.6	33.8
1/4	4.7	33.7
C	4.8	33.6
1/4	4.8	33.6
cb.	4.8	33.6
S	4.7	33.7

E 1/4 Arctic St.

S	7.5	30.9
cb.	7.7	30.7

38.375

1/4	7.1	31.3
C	7.1	31.3
1/4	6.8	31.6
cb	6.3	32.1
N	5.5	32.9

E Carb Arctic St.

N	4.5	33.9
cb	7.1	31.3
1/4	7.1	31.3
4'	7.5	30.9
11'	11.0	27.4
C	11.1	27.3
10'	7.9	30.5
1/4	7.8	30.6
cb	7.4	31.0
S.	6.5	31.9

T.P. 7.57 42.005 3.94

34.435

5

42.005

E line Arctic St.

S	8.8	33.2
10'	9.0	33.0
cb	10.6	31.4
1/4	11.8	30.2
4'	14.0	28.0
C	14.4	27.6
1/4	14.1	27.9
cb	12.7	29.3
N	9.1	32.9

25 ft E of Arctic St.

N	9.3	32.7
10'	12.2	29.8
12'	13.7	28.3
cb	13.7	28.3
1/4	13.6	28.4
C	13.8	28.2



42005

10'	13.3	28.7
1/4	11.9	30.1
cb.	9.4	32.6
S.	6.6	35.4

50ft E of Arctic St.

S.	4.8	37.2
cb.	5.9	36.1
1/4	13.3	28.7
C	13.4	28.6
1/2	13.3	28.7
cb.	13.3	28.7
6'	13.5	28.5
N	11.3	30.7
20'	5.6	36.4

75ft E of Arctic St.

25	5.6	36.4
N	11.9	30.1

42005

cb.	12.9	29.1
1/4	13.0	29.0
C	12.5	29.5
1/4	10.1	31.9
8'	9.3	32.7

cb.	5.0	37.0
S	3.5	38.5

100ft E of Arctic St.

S	1.8	40.2
cb.	2.2	39.8
1/4	7.8	34.2
C	11.2	30.8
1/4	12.5	29.5
cb.	12.5	29.5
12'	12.0	30.0
N	10.0	32.0
26'	4.4	37.6

42.005

125 ft E of Arctic St.

26'	4.3	37.7
N	9.5	32.5
2'	11.4	30.6
cb.	12.1	29.9
1/4	11.9	30.1
C	10.2	31.8
1/4	5.1	36.9
cb.	0.8	41.2
S	0.0	42.

T.P. 7.05 48.31 0745 41.26

150 ft E of Arctic

S	4.3	44.0
cb.	5.2	43.1
1/4	10.9	37.4
C	15.5	32.8
1/4	16.6	31.7

48.31

cb.

17.3 31.0

12'

17.1 31.2

N

16.2 32.1

20'

13.6 34.7

175 ft E of Arctic St.

20'

12.2 36.1

N

14.8 33.5

cb.

16.6 31.7

1/4

15.0 33.3

C

12.4 35.9

1/4

8.5 39.8

cb.

4.1 44.2

S

3.5 44.8

190 ft E of Arctic St.

S

3.6 44.7

cb.

4.1 44.2

1/4

11.4 36.9



48.31

C	10.3	38.0
1/4	10.9	37.4
11'	11.2	37.1
cb.	13.6	34.7
N	6.3	42.0
5'	7.0	44.3

200ft E of Arctic - W line India

N	4.0	44.3
cb.	4.2	44.1
1/4	4.1	44.2
C	4.3	44.0
1/4	4.1	44.2
cb.	4.0	44.3
S	3.8	44.5

BNA SW Cor India <sup>by</sup> Grape  
SPK in Elec / B1C 3.545 44.765

W Curt India

48.31

S	3.9	44.4
cb.	4.1	44.2
1/4	3.7	44.6
C	3.5	44.8
1/4	3.8	44.5
cb.	4.2	44.1
N	4.4	43.9

W 1/4 India

N	3.6	44.7
cb.	3.3	45.0
1/4	3.3	45.0
C	3.3	45.0
1/4	3.1	45.2
cb.	3.2	45.1
S	3.3	45.0

48.31

India

S	2.9	45.4
cb.	2.9	45.4
1/4	3.0	45.3
C	3.1	45.2
1/4	3.2	45.1
cb.	3.3	45.0
N	3.3	45.0

E 1/4 India

N	3.2	45.1
cb.	3.0	45.3
1/4	3.0	45.3
C	3.0	45.3
1/4	2.6	45.7
cb.	2.7	45.6
S	2.5	45.8

48.31

E Curb India

S	2.2	46.1
cb.	2.3	46.0
1/4	2.3	46.0
C	2.6	45.7
1/4	2.7	45.6
cb.	3.0	45.3
N	2.9	45.4

E Line India

N	3.6	44.7
cb.	3.4	44.9
1/4	3.0	45.3
C	3.3	45.0
1/4	2.9	45.4
cb.	2.6	45.7
S	2.0	46.3



48.31

## 10ft E of India

S	2.3	46.0
8'	3.0	45.0
cb.	4.8	43.5
1/4	6.2	42.1
C	6.2	42.1
10'	3.1	45.2
1/4	3.5	44.8
cb.	3.3	45.0
N	5.5	42.8
20'	5.0	43.0

## 25ft E of India

25'	AA	43.9
N	5.4	42.9
5'	4.7	43.6
cb.	2.8	45.5
1/4	3.0	45.3

48.31

C

7.0 41.3

1/4

7.3 41.0

cb.

5.9 42.4

6'

3.1 45.2

S

2.5 45.8

## 35ft E of India

10'

5.7 42.6

S

6.5 41.8

cb.

6.8 41.5

1/4

7.2 41.1

C

6.5 41.8

1/4

2.5 45.8

cb.

2.5 45.8

6'

2.8 45.5

N

5.3 43.0

20'

5.0 43.3

Night 10/10/04

10/14/04

57115  
B.M.G. 12.35 Grape 94 India 44.765

50ft E of India

25' 11.7 45.4

S 15.2 41.9

cb. 16.6 40.5

1/4 15.7 41.4

C 14.0 43.1

1/4 11.3 45.8

cb. 11.0 46.1

9' 11.3 45.8

N 13.1 44.0

26' 12.3 44.8

75ft E of India

26' 10.8 46.3

N 10.5 46.6

cb. 10.7 46.7

1/4 10.7 46.4

11

57115

C 12.4 44.7

1/4 14.0 43.1

cb. 15.4 41.7

S 14.9 42.2

14' 14.9 42.2

30' 10.0 47.1

100ft E of India

30' 10.5 46.6

14' 14.2 42.9

S 13.8 43.5

cb. 14.6 42.5

1/4 12.9 44.2

C 10.9 46.2

1/4 8.7 48.4

cb. 7.7 49.4

N 6.9 50.2

25' 8.6 48.5



57.115

125 ft E of India

25'	6.1	51.0
N	4.0	53.1
cb.	5.0	52.1
1/4	6.5	50.6
C	9.2	47.9
1/4	11.4	45.7
cb.	12.9	44.2
S	13.8	43.3
24'	13.2	43.9

150 ft E of India

30'	12.3	44.8
S	12.4	44.7
cb.	11.5	45.6
1/4	9.9	47.2
C	7.0	50.1
1/4	4.2	52.9

57.115

cb.	2.2	54.9
N	1.2	55.9
T.P.	4.37	60.55 0935
		56.18

175 ft E of India

N	2.2	58.3
cb.	3.5	57.0
1/4	6.8	53.7
C	9.5	51.0
1/4	12.0	48.5
cb.	13.4	47.1
S	14.3	46.2
32'	13.7	46.8

185 ft E of India

30'	12.4	48.1
S	12.5	48.0
cb.	11.7	48.8
1/4	10.7	49.8

60.55

C	8.3	52.2
1/4	4.9	55.6
cb.	2.9	57.6
N	1.5	59.0

200ft E of India - W.L. Columbia

N	0.8	59.7
cb.	1.9	58.6
1/4	2.2	57.3
C	1.6	58.9
1/4	1.9	58.6
cb.	1.5	59.0
S.	1.4	59.1

B.16 1216

71.025  
E. edge  
Main Hole  
Rim

W. line  
Columbia  
1.675

58.865

E Line Columbia

S	9.8	61.2
cb.	9.9	61.1
1/4	10.3	60.7

71.025

C	10.1	60.9
1/4	10.4	60.6
cb.	6.6	64.4
N	6.5	64.5

25ft E of Columbia

N	5.0	66.0
cb.	5.2	65.8
6'	7.0	64.0
1/4	7.3	63.7
C	7.3	63.7
1/4	7.9	63.1
cb.	8.2	62.8
4'	7.6	63.4
S.	9.3	61.7

50ft E of Columbia

S	6.5	64.5
10'	5.6	65.4



71025

cb.	6.2	64.8
1/4	5.4	65.6
c	4.2	66.8
1/4	4.2	66.8
cb.	3.4	67.6
N	3.7	67.3

75ft E of Columbia

N	2.0	69.0
cb.	1.9	69.1
1/4	2.3	68.7
c	2.6	68.4
1/4	2.9	68.1
cb.	4.1	66.9
2'	3.4	67.6
S	4.5	66.5

14

71025

100ft E of Columbia

S	3.6	67.4
cb.	2.7	68.3
1/4	1.3	69.7
c	1.1	69.9
1/4	0.4	70.6
cb.	0.2	70.8
N	0.0	71.0

T.P. 12995 83.32 0.70 70.325

125ft E of Columbia

N	10.6	72.7
cb.	11.1	72.2
1/4	11.2	72.1
c	11.8	71.5
1/4	12.2	71.1
cb.	13.7	69.6
S	14.0	69.3

83.32

150ft E of Columbia

S	11.6	71.7
cb.	11.8	71.5
1/4	11.2	72.1
c	10.4	72.9
1/4	10.0	73.3
cb.	9.8	73.5
N	8.9	74.4

175ft E of Columbia

N	7.8	75.5
cb	8.7	74.6
1/4	9.2	74.1
c	9.4	73.9
1/4	9.4	73.9
cb	9.9	73.4
S	9.7	73.6

83.32

200ft E of Columbia - W Line State

S	7.0	76.3
cb.	7.5	75.8
1/4	8.1	75.2
c	8.1	75.2
1/4	7.3	76.0
cb.	7.2	76.1
N	6.7	76.6
B.N.G.	Hydr Nozzle State Eng Hawthorne	0.17 83.15
B.N.G.	Spk. in 131e SW Cor. Snake Eng State	62.9 77.03
	W Curb. State St.	
S	6.5	76.8
cb.	6.4	76.9
1/4	6.7	76.6
c	6.3	77.0
1/4	6.3	77.0
cb.	6.7	76.6
N	6.5	76.8



83.32

W  $\frac{1}{4}$  State St.

N	5.7	77.6
cb.	5.6	77.7
$\frac{1}{4}$	5.5	77.8
C	5.8	77.5
$\frac{1}{4}$	5.7	77.6
cb.	6.0	77.3
S	6.0	77.3

C State St.

S	5.3	78.0
cb	5.0	78.3
$\frac{1}{4}$	5.0	78.3
C	5.1	78.2
$\frac{1}{4}$	4.9	78.4
cb.	4.8	78.5
N	4.7	78.6

16

83.32

E  $\frac{1}{4}$  State St

N	4.8	78.5
cb	4.8	78.5
$\frac{1}{4}$	4.8	78.5
C	4.9	78.4
$\frac{1}{4}$	4.8	78.5
cb.	4.8	78.5
S	4.9	78.4

E Curb. State St

S	4.5	78.8
cb.	4.4	78.9
$\frac{1}{4}$	4.6	78.7
C	4.3	79.0
$\frac{1}{4}$	4.5	78.8
cb	4.8	78.5
N	4.8	78.5

8332

## E Line State St

N	4.2	79.1		
cb	4.3	79.0		
1/4	4.3	79.0		
C	4.4	78.9		
1/4	4.4	78.9		
cb	4.2	79.1		
S	4.3	79.0		
T.P.	11.25	94.23	0.34	82.98
T.P.	11.84	105.92	0.15	94.08
B.M.	Cop Tack in head in Top of Corner Wall SE Union St			9.80
				96.12

## E Line Union

S	11.9	94.0
cb	11.9	94.0
1/4	11.5	94.4
C	11.3	94.6
1/4	10.9	95.0

17

105.92

cb	11.4	94.5
N	11.0	94.9
	N.E. Cor.	
	S.E. Cor. Grape <sup>3</sup> Union to Pt 28 E of	
N	9.2	96.7
cb	9.6	96.3
1/4	10.1	95.8
C	10.3	95.6
1/4	11.2	94.7
cb	11.9	94.0
S	11.9	94.0
	25 ft E of Union St.	
S	10.4	95.5
cb	10.5	95.4
1/4	9.6	96.3
C	8.7	97.2
1/4	8.6	97.3
cb	7.8	98.1
N	7.6	98.3



10592

50 ft E of Union St

N	6.0	99.9
cb.	6.0	99.9
1/4	6.9	99.0
C	6.9	99.0
1/4	7.3	98.6
cb.	8.4	97.5
S	8.4	97.5

75 ft E of Union St

S	6.2	99.7
cb.	6.5	99.4
1/4	5.7	100.2
C	5.0	100.9
1/4	5.0	100.9
cb.	4.1	101.8
X	4.0	101.9

18

10592

100 ft E of Union St

N	2.3	103.6
cb.	2.5	103.4
1/4	3.1	102.8
C	3.1	102.8
1/4	3.7	102.2
cb.	4.4	101.5
S	4.4	101.5

125 ft E of Union St

S	2.2	103.7
cb.	2.5	103.4
1/4	2.1	103.8
C	1.3	104.6
1/4	1.5	104.4
cb.	0.8	105.1
N	0.6	105.3

10592

1345 ft E of Union - Wh Albatross

N	+0.3	106.2
cb.	+0.1	106.0
1/4	0.9	105.0
C	0.7	105.2
1/4	1.5	104.4
cb.	0.9	105.0
S	0.8	105.1

T.P 11.23 116.40 0.75 105.17

B.M. Spk in Pole N/E Cor  
Grape <sup>2</sup>/<sub>3</sub> Albatross 7.37 109.03

W Curb Albatross

*Commence*

S	11.4	105.0
cb.	11.8	104.6
1/4	10.9	105.5
C	10.7	105.7
1/4	10.9	105.5
cb.	11.0	105.4
N	10.4	106.0

11640

W 1/4 Albatross

N	9.8	106.6
cb.	9.9	106.5
1/4	10.1	106.3
C	9.9	106.5
1/4	10.4	106.0
cb.	10.7	105.7
S	11.1	105.3

C Albatross

S	10.1	106.3
cb.	9.8	106.6
1/4	9.6	106.8
C	9.4	107.0
1/4	9.3	107.1
cb.	9.1	107.3
N	8.6	107.8



11640

E  $\frac{1}{4}$  Albatross

N	8.1	108.3
cb.	8.8	107.6
$\frac{1}{4}$	9.0	107.4
C	8.9	107.5
$\frac{1}{4}$	9.3	107.1
cb.	9.5	106.9
S	9.9	106.5

## E Curb Albatross

S	9.4	107.0
cb.	10.0	106.4
$\frac{1}{4}$	9.5	107.9
C	8.9	107.5
$\frac{1}{4}$	8.9	107.5
cb.	8.4	108.0
N	8.4	108.0

20

11640

## E Line Albatross

N	8.2	108.2
cb.	8.4	108.0
$\frac{1}{4}$	8.2	108.2
C	8.4	108.0
$\frac{1}{4}$	8.6	107.8
cb.	8.6	107.8
S	9.1	107.3

## 3 ft E of Albatross

S	6.3	110.1
cb.	7.5	108.9
$\frac{1}{4}$	8.0	108.4
C	8.1	108.3
$\frac{1}{4}$	8.0	108.4
cb.	8.0	108.4
N	7.7	109.0

11640

25 ft E of Albatross

N	6.3	110.1
cb.	6.6	109.8
1/4	6.6	109.8
c	6.6	109.8
1/4	6.5	109.9
cb.	5.7	110.7
S	4.7	111.7

50 ft E of Albatross

S	3.6	112.8
cb	4.3	112.1
1/4	4.9	111.5
c	4.8	111.6
1/4	4.5	111.9
cb	4.9	111.5
N	4.9	111.5

11670

75 ft E of Albatross

N	3.4	113.0
cb.	3.2	113.2
1/4	3.1	113.3
c	3.1	113.3
1/4	2.5	113.9
cb.	2.5	113.9
S	2.3	114.1

100 ft E of Albatross

S	0.2	116.2
cb.	0.5	115.9
1/4	0.5	115.9
c	0.7	115.7
1/4	1.4	115.0
cb.	0.9	115.5
N	0.0	116.4



11640

T.P. 792 124.12 0.20 116.20

125 ft E of Albatross

N	5.6	118.5
cb	6.7	117.4
1/4	7.0	117.1
C	6.6	117.5
1/4	6.0	118.1
cb	6.0	118.1
S	6.3	117.8

150 ft E of Albatross

S	4.9	119.2
cb	4.4	119.7
1/4	4.2	119.9
C	4.5	119.6
1/4	5.0	119.1
cb	4.3	119.8
N	3.8	120.3

124.12

175 ft E of Albatross

N	2.4	121.7
cb	2.6	121.5
1/4	2.8	121.3
C	3.3	120.8
1/4	3.7	120.4
cb	3.3	120.8
S	4.1	120.0

198 ft E of Albatross

S	3.7	120.4
cb	3.3	120.8
1/4	2.5	121.6
C	1.8	122.3
1/4	1.1	123.0
cb	0.6	123.5
N	0.3	123.8

124.12

## 200ft E of Albatross - W Line Front

N	4.4	119.7
cb.	5.3	118.8
1/4	6.0	118.1
c	6.2	117.9
1/4	7.0	117.1
cb.	7.2	116.9
S	7.1	116.0

## W Curb Front

S	7.2	116.9
cb.	7.9	116.2
1/4	7.3	116.8
c	6.6	117.5
1/4	6.2	117.9
cb.	5.2	118.9
N	4.7	119.4

124.12

## W 1/4 Front

N	4.8	119.3
cb.	5.3	118.8
1/4	5.6	118.5
c	5.7	118.4
1/4	6.5	117.6
cb.	7.1	117.0
S	7.6	116.5

## C Front

S	7.1	117.0
cb.	6.8	117.3
1/4	6.3	117.8
c	6.1	118.0
1/4	5.5	118.6
cb.	5.2	118.9
N	4.7	119.4



124.12

## E 1/4 Front

N.	4.7	119.4
cb.	5.2	118.9
1/4	5.8	118.3
C	6.2	117.9
1/4	6.3	117.8
cb.	6.6	117.5
S	7.2	116.9

## E Curb Front

S	7.2	116.9
cb.	7.2	116.9
1/4	6.3	117.8
C	6.5	117.6
1/4	5.9	118.2
cb.	5.7	118.4
N	6.1	118.0

124.12

## E Line Front St.

N	5.8	118.3
cb.	6.2	117.9
1/4	5.2	118.9
C	5.8	118.3
1/4	6.6	117.5
cb.	7.2	116.9
S	6.9	117.2

## 2 1/2 E of Front.

S	7.4	116.7
cb.	5.8	118.3
1/4	2.0	122.1
C	1.2	122.9
1/4	0.6	123.5
cb.	0.0	124.1

T.P. 2535 126.390 0.265 123.855  
 Spk in Pole SW cor.  
 BMG. Grape 2/3 Front 9.02 117.37

126.39

1'	0.5	125.9
N	0.0	126.4
10 ft E of Front		
N	0.0	126.4
cb.	0.6	125.8
2'	2.2	124.2
1/4	2.6	123.8
C	3.2	123.2
1/4	5.0	121.4
cb.	8.5	117.9
S	11.3	115.1
20'	17.2	109.2
25 ft E of Front		
20'	19.0	107.4
S	12.6	113.6
cb.	9.2	117.2
1/4	7.0	119.4

126.39

C	5.2	121.2
1/4	3.1	123.3
cb.	0.8	125.6
N	+0.3	126.7
50 ft E of Front		
N	0.6	125.8
11'	2.5	123.9
cb.	3.8	122.6
1/4	5.6	120.8
C	7.5	118.9
1/4	10.0	116.4
cb.	11.7	114.7
S	14.9	111.5
11'	19.0	107.4
47'	20.6	105.8
75 ft E of Front		
A5'	20.6	105.8



126.39

S		19.7	106.7
cb.		15.7	110.7
1/4		13.1	113.3
C		10.6	115.8
1/4		8.5	117.9
cb.		5.6	120.8
N		2.2	124.2
10'		1.2	125.2
B.M.	Night (10/14/04) (10/17/04) 5.76 123.13		117.37
	100 ft E of Front		
15'		1.3	121.8
N		2.7	120.4
cb.		3.3	119.8
6		4.6	118.5
1/4		8.8	114.3
C		13.7	109.7
1/4		15.6	107.5

10/17/04 <sup>of old</sup> Remise 26  
Lambert

123.13

cb.		15.7	107.4
S		16.2	106.9
8'		16.5	106.6
34'		9.3	113.8
	125 ft E of Front		
31'		4.2	118.9
S		9.8	113.3
cb.		13.2	109.9
10'		15.6	107.5
1/4		15.4	107.7
C		14.6	108.5
1/4		14.3	108.8
cb.		13.7	109.4
9'		13.2	109.9
N		10.2	112.9
15'		2.4	120.7
35'		2.3	120.8

123.13

150 ft E of Front

50'	4.0	119.1
18'	11.8	111.3
N	12.2	110.9
cb.	12.8	110.3
4'	12.8	110.3
1/4	10.5	112.6
C	7.8	115.3
5'	7.4	115.7
1/4	5.3	117.8
cb.	3.0	120.1
5	1.4	121.7
20'	+1.4	124.5

160 ft E of Front

21'	+3.5	126.6
5	+1.4	124.5
cb.	0.4	122.7

123.13

27

1/4	1.5	121.6
8'	3.8	119.3
C	3.5	119.6
1/4	5.0	118.1
cb.	7.9	115.2
N	10.5	112.6
4'	8.3	114.8
50'	5.5	117.6

T.P. 12.96 / 35.235 / 1.835 122.275

175 ft E of Front

50'	13.2	122.0
N	15.4	119.8
cb.	15.2	120.0
1/4	11.9	123.3
C	11.4	123.8
1/4	10.6	124.6
7'	12.0	123.2



135.235

cb	9.0	126.2
S	6.8	128.4
20'	4.5	130.7

190 ft E of Front

20'	1.1	134.1
S	2.0	133.2
cb	3.8	131.4
1/4	4.5	130.7
C	5.0	130.2
1/4	5.1	130.1
cb	5.9	129.3
N	8.7	126.5
20'	3.8	131.4

200.8 ft E of Front - W line First -

T.P.	12.58	145.485	233	132.905
10'		8.1		137.4
N		12.2		133.3

23

145.485

cb	11.4	134.1
1/4	10.3	135.2
C	10.4	135.1
1/4	8.3	137.2
cb	7.2	138.3
S	6.1	139.4
7'	5.4	140.1

4' E of W line First St

S	4.2	141.3		
cb	4.8	140.7		
1/4	5.9	139.6		
C	6.4	139.1		
1/4	6.9	138.6		
cb	7.3	138.2		
N	6.7	138.8		
T.P.	9.99	153.815	1.66	143.825

153815

## E line First Street

N	11.2	142.6
cb.	11.5	142.3
1/4	9.9	143.9
C	9.5	144.3
1/4	9.5	144.3
cb.	9.7	144.1
S	9.2	144.6

## 5'ft East of First.

S	3.2	150.6
cb.	6.8	147.0
1/4	8.0	145.8
C	9.1	144.7
1/4	9.4	144.4
cb.	8.6	145.2
N	8.7	145.1

(Night 10/17/04)

10/18/04 { Hatch  
Rennice  
Lambert } 20

T.P.	1203.155855	143.825
B.M.	Spk in Pole S.E. Cor. 1 <sup>st</sup> & Grape 11.55	144.305

## 25'ft E of First

N	8.1	147.8
cb.	7.8	148.1
1/4	6.7	149.2
C	6.5	149.4
1/4	5.0	150.9
cb.	2.4	153.5

T.P.	1298.167001835	154.02
------	----------------	--------

S	10.1	156.9
---	------	-------

## 50'ft E of First

S	5.7	161.3
cb.	7.8	159.2
1/4	9.8	157.2
C	13.1	153.9
1/4	14.1	152.9



167.00

cb.	15.8	151.2
N	17.3	149.7

75 ft E of First

N	13.6	153.4
cb.	12.1	154.9
1/4	10.1	156.9
C	8.1	158.9
2'	6.4	160.6
1/4	5.0	161.0
cb.	3.6	163.4
S	1.6	165.4

100 ft E of First

S	+0.2	167.3
cb.	0.1	166.9
1/4	1.9	165.1
C	3.7	163.3
1/4	5.7	161.3

30

167.00

cb.	7.8	159.2
N	10.2	156.8

125 ft E of First

N	5.9	161.1		
cb.	3.3	163.7		
1/4	1.7	165.3		
C	0.9	166.1		
T.P.	10605	176.855	0.75	166.25
1/4	9.4	167.5		
cb.	8.9	168.0		
S	8.2	168.7		

150 ft E of First

S	6.4	170.5
cb.	7.2	169.7
1/4	7.6	169.3
C	7.6	169.3
1/4	7.7	169.2

176.855

cb	8.6	168.3
N	10.5	166.4
175 ft E of First		
N	6.0	170.9
cb.	5.1	171.8
1/4	5.4	171.3
C	5.5	171.4
1/4	5.3	171.6
cb.	5.4	171.5
S	5.2	171.7

197 ft E of First

S	5.3	171.6
cb.	4.1	172.8
1/4	3.8	173.1
C	4.0	172.9
1/4	4.1	172.8
cb.	4.3	172.6

176.855

N	5.2	171.7
---	-----	-------

200.3 ft E of First - W line Second

N	7.8	169.1
---	-----	-------

cb.	8.1	168.8
-----	-----	-------

1/4	8.1	168.8
-----	-----	-------

C	7.8	169.1
---	-----	-------

1/4	8.2	168.7
-----	-----	-------

cb.	7.8	169.1
-----	-----	-------

S	7.3	169.6
---	-----	-------

Spk in Phone Pole.

BPG.	NE. cor. 2 <sup>nd</sup> & Grape 6.28	170.575
------	---------------------------------------	---------

E line Second

S	6.1	170.8
---	-----	-------

cb.	7.1	169.8
-----	-----	-------

1/4	6.9	170.0
-----	-----	-------

C	6.4	170.5
---	-----	-------

1/4	7.1	169.8
-----	-----	-------

cb.	6.8	170.1
-----	-----	-------

N	6.3	170.6
---	-----	-------



176.855

## 3ft E of Second

N	1.3	175.6
cb.	1.3	175.6
1/4	1.1	175.8
C	1.2	175.7
1/4	1.5	175.4
cb.	1.8	175.1
S	2.6	174.3

## 25ft E of Second

B.M.	13.22	183.795	170.575
S	8.8	175.0	
cb.	8.2	175.6	
1/4	7.5	176.3	
C	6.9	176.9	
1/4	6.3	177.5	
cb.	6.3	177.5	
N	6.3	177.5	

183.795

## 50ft E of Second

N	4.8	179.0
cb.	5.3	178.5
1/4	6.1	177.7
C	6.6	177.2
1/4	7.0	176.8
cb.	7.2	176.6
S	8.0	175.8

## 75ft E of Second

S	7.3	176.5
cb.	6.8	177.0
1/4	5.9	177.9
C	5.7	178.1
1/4	4.9	179.9
cb.	4.3	179.5
N	3.2	180.6

183.795

100 ft E of Second

N	3.4	180.4
cb.	3.8	180.0
1/4	4.2	179.6
c	5.0	178.8
1/4	5.5	178.3
cb.	6.2	177.6
S	6.7	177.1

125 ft E of Second

S	6.0	177.8
cb.	5.7	178.1
1/4	4.6	179.2
c	3.9	179.9
1/4	3.3	180.5
cb.	2.6	181.2
N	2.0	181.8

183.795

150 ft E of Second

N	0.3	183.5
cb.	1.5	182.3
1/4	3.1	180.7
c	3.9	179.9
1/4	4.4	179.4
cb.	5.2	178.6
S	5.1	178.7

175 ft E of Second

S	4.8	179.0
cb.	4.4	179.4
1/4	3.9	179.9
c	3.5	180.3
1/4	2.6	181.2
cb.	1.3	182.5
N	0.1	183.7



183.795

200ft E of Second - W Line 3<sup>d</sup>

N	0.5	183.3
ob	1.9	181.9
1/4	2.6	181.2
C	3.2	180.6
1/4	4.0	179.8
ob	4.7	179.1
S	4.5	179.3

W curb. 3<sup>d</sup> St

S	4.7	179.1
ob	5.1	178.7
1/4	4.4	179.4
C	3.7	180.1
1/4	2.9	180.9
ob	2.2	181.6
N	1.5	182.3

183.795

W 1/4 3<sup>d</sup> St

N	1.6	182.2
ob	2.4	181.4
1/4	3.1	180.7
C	3.7	180.1
1/4	4.7	179.1
ob	4.9	178.9
S	5.3	178.5

C 3<sup>d</sup> St

S	4.7	179.1
ob	5.1	178.7
1/4	4.9	178.9
C	4.1	179.7
1/4	3.3	180.5
ob	2.9	180.9
N	3.8	180.0

183.795

E 1/4 3<sup>d</sup> St.

N	2.7	181.1
cb.	3.4	180.4
1/4	3.6	180.2
C	4.2	179.6
1/4	4.9	178.9
cb.	5.3	178.5
S	5.2	178.6

E curb 3<sup>d</sup> St.

S	5.7	178.1
cb.	5.6	178.2
1/4	5.0	178.8
C	4.2	179.6
1/4	3.6	180.2
cb.	3.1	180.7
N	2.3	181.5

183.795

E line 3<sup>d</sup> St.

N	1.9	181.9
cb.	3.0	180.8
1/4	3.6	180.2
C	4.4	179.4
1/4	5.1	178.7
cb.	5.5	178.3
S	5.3	178.5

Hydr Nozzle SE 3<sup>d</sup> St. Grape.

B.M. 3.68 183.625 3.85 179.945

25ft E of 3<sup>d</sup> St.

S	5.4	178.2
cb.	5.0	178.6
1/4	4.9	178.7
C	4.8	178.8
1/4	3.1	180.5
cb.	2.7	180.9
N	1.6	182.0

35



183625

50 ft E of 3<sup>d</sup> St

N	1.8	181.8
db	2.5	181.1
1/4	3.2	180.4
C	4.0	179.6
1/4	4.6	179.0
db	5.0	178.6
S	4.7	178.9

75 ft E of 3<sup>d</sup> St

S	4.8	178.8
db	4.8	178.8
1/4	4.7	178.9
C	4.3	179.3
1/4	3.3	180.3
db	2.9	180.7
N	2.2	181.4

36

183625

100 ft E of 3<sup>d</sup> St

N	2.0	181.6
db	2.7	180.9
1/4	3.7	179.9
C	4.4	179.2
1/4	4.7	178.9
db	4.7	178.9
S	4.8	178.8

125 ft E of 3<sup>d</sup> St

S	5.0	178.6
db	5.1	178.5
1/4	4.9	178.7
C	4.5	179.1
1/4	3.5	180.1
db	2.5	181.1
N	2.0	181.6

183625

150ft E of 3<sup>d</sup> St.

N	2.0	181.6
cb.	2.9	180.7
1/4	3.9	179.7
C	4.5	179.1
1/4	4.8	178.8
cb.	4.8	178.8
S	4.6	179.0

175 E of 3<sup>d</sup> St.

S	4.2	179.4
cb	4.3	179.3
1/4	4.5	179.1
C	3.9	179.7
1/4	3.4	180.2
cb.	2.4	181.2
N	1.7	181.9

183625

200ft E of 3<sup>d</sup> - W line 4<sup>th</sup>

N	0.4	183.2
cb	0.6	183.0
1/4	1.8	181.8
C	2.2	181.4
1/4	3.1	180.5
cb.	3.5	180.1
S	3.4	180.2

Spk. in light 131e. S.W. 4<sup>th</sup> Grape.

B.M. 10.245 190.315 3.555 180.07

E Line 4<sup>th</sup> St.

N	6.4	184.9
cb	7.3	183.0
1/4	8.1	182.2
C	8.6	181.7
1/4	9.6	180.7
cb.	10.3	180.0
S	10.1	180.2



190.315

5 ft E of 4<sup>th</sup> St.

S	8.1	182.2
cb.	7.0	183.3
9'	7.7	182.6
1/4	8.9	181.4
C	8.4	181.9
1/4	7.2	183.1
cb.	6.0	184.3
N	3.4	186.9

25 ft E of 4<sup>th</sup> St.

N	2.6	187.7
8'	3.1	187.2
cb.	4.7	185.9
1/4	5.7	184.6
C	7.0	183.3
1/4	6.9	183.4
cb.	5.8	184.5

38

190.315

5 ft E of 4<sup>th</sup> St.

S	6.8	183.5
5	5.4	184.9
cb.	4.8	185.5
1/4	5.9	184.4
C	5.4	184.9
1/4	4.3	186.0
cb.	3.3	187.0
6'	2.2	188.1
8	1.1	189.2
N	0.8	189.5

75 ft E of 4<sup>th</sup> St.

N	+0.3	190.6
cb.	2.1	188.2
1/4	3.4	186.9
C	4.4	185.9
1/4	5.0	185.3

190315

cb. 4.0, 186.3

S. 7.3 186.0

100 ft E of 4<sup>th</sup> St.

S. 3.9 186.4

cb. 3.6 186.7

1/4 4.6 185.7

C 4.4 185.9

1/4 3.4 186.9

cb. 1.6 188.7

7' +1.3 191.6

N +2.3 192.6

125 ft E of 4<sup>th</sup> St.

N +3.1 193.4

7' +1.9 192.2

cb. 2.3 188.0

1/4 3.8 186.5

C 4.5 185.8

39

190315

1/4 7.1 186.2

cb. 3.2 187.1

S 3.2 187.1

150 ft E of 4<sup>th</sup> St.

S. 3.1 187.2

cb. 3.2 187.1

1/4 5.9 184.4

C 6.1 184.2

1/4 5.0 185.3

cb. 2.8 187.5

7' +1.0 191.3

N +2.9 193.2

165 ft E of 4<sup>th</sup> St.

N +2.4 192.7

cb. 2.5 187.8

1/4 7.0 183.3



190.315

c	8.5	181.8
1/4	8.7	181.6
cb.	7.8	182.5
9'	5.4	184.9
12'	3.0	187.3
S	2.9	187.4

175 ft E of 4<sup>th</sup> St.

S	2.6	187.7
5'	2.6	187.7
8'	8.0	182.3
cb.	10.2	180.1
1/4	10.5	179.8
c	9.5	180.8
1/4	8.7	181.6
cb.	3.9	186.4
N	+1.4	191.7

190.315

195 ft E of 4<sup>th</sup> St

N	0.0	190.3
cb.	6.9	183.4
1/4	11.6	178.7
c	11.7	178.6
1/4	12.5	177.8
cb.	13.0	177.3
9'	10.5	179.8
S	5.4	184.9

200 ft E of 4<sup>th</sup> - w line 5<sup>th</sup> St

S	12.9	177.4
cb.	13.3	177.0
1/4	12.9	177.4
c	12.2	178.1
1/4	12.2	178.1
cb.	11.8	178.5
N	11.5	178.8

190.315

T.P.	4.87	183.525	11.66	178.655
B.M.		4.95		176.575
E line 5 <sup>th</sup> St.				
S		6.9		176.6
cb.		7.1		176.4
1/4		6.2		177.3
C		6.0		177.5
1/4		5.5		178.0
cb.		5.1		178.4
N		4.4		179.1
7.5 ft E of 5 <sup>th</sup> St.				
20'		9.0		174.5
N		11.2		172.3
cb.		12.3		171.2
1/4		12.5		171.0
C		13.2		170.3
1/4		13.3		170.2

183.525

cb.	14.2	169.3
S	13.5	170.0
20'	15.1	168.4
25 ft E of 5 <sup>th</sup> St.		
20'	16.2	167.3
S	14.5	169.0
cb.	13.1	170.4
1/4	11.7	171.8
C	11.6	171.9
1/4	11.3	172.2
cb.	11.0	172.5
N	10.7	172.8
20'	8.2	175.3
50 ft E of 5 <sup>th</sup> St.		
20'	6.1	177.4
N	6.4	177.1
cb.	7.2	176.3



183.525

186.24

1/4 7.6 175.9

C 7.4 176.1

1/4 8.0 175.5

cb 8.8 174.7

S 9.7 173.8

20' 10.9 172.6

75 ft E of 5<sup>th</sup> St.

20' 7.7 175.8

S 6.0 177.5

cb 3.6 179.9

1/4 3.1 180.4

C 2.8 180.7

1/4 2.3 181.2

cb 2.0 181.5

N 1.4 182.1

T.P. 5.65 186.24 2.935 180.590

100 ft E of 5<sup>th</sup> St.

0.4 185.8

0.8 185.4

1.6 184.6

2.6 183.6

3.5 182.7

5.0 180.2

6.5 179.7

125 ft E of 5<sup>th</sup> St.

7.4 178.8

6.3 179.9

5.2 180.0

4.0 181.2

2.6 183.6

1.4 184.8

0.3 185.9

186.24

140 ft E of 5<sup>th</sup> St

N	1.1	185.1
cb.	2.3	183.9
1/4	3.6	182.6
C	5.1	181.1
1/4	6.8	179.4
cb.	8.9	177.3
S	10.8	175.4

150 ft E of 5<sup>th</sup> St

25'	19.0	167.2
S	15.0	171.2
cb.	13.1	173.1
1/4	11.9	174.3
C	7.0	179.2
1/4	4.6	181.6
cb.	3.1	183.1
N	1.7	184.5

186.24

166 odd E of 5<sup>th</sup> Park line

N	3.1	183.1
cb.	4.7	181.5
1/4	8.2	178.0
C	12.5	173.7
1/4	16.7	169.5
cb.	19.8	166.4
S	21.8	164.4
20'	22.4	163.8

End slope  
about 1-1/2  
at North side the bank of  
the bank is about 25 ft  
further east  
(10/18/04)



Ivy St

10/31/04 HUTCHISON TERRAZZO EVANS

44

10.93 145.43 134.50

12.77 157.11 1.09 144.34

11.51 164.98 3.64 153.47

West Line of Albatross

No Line		
Curb	12.9	152.1
1/4	12.7	152.3
Ct.	11.4	153.6
4	9.8	155.2
-	8.4	156.6
11' Line	6.9	158.1

West Curb Line of Albatross

11' Line	5.7	159.3
3' So of 11' Line	6.5	158.5
7' " " "	8.6	156.4
Curb	9.0	155.8
4	9.7	155.3
Ct.	10.7	154.3

1/4	11.8	153.2
Ct.	12.9	152.1
No Line	12.9	152.1

West 1/4 Line

No Line	12.7	152.3
-	11.8	153.2
4	11.0	154.0
Ct.	10.3	154.7
4	9.7	155.3
-	9.7	155.3
9' So of 11' Line	6.3	158.7
11' Line	4.4	160.6

Center Line

11' Line	4.5	160.5
4' So of 11' Line	5.2	159.8
Curb	9.1	155.9
1/4	9.7	155.3
Ct.	10.3	154.7

1/4	164.98	10.4	154.6
-		11.1	153.9
No Line		11.7	153.3
	East 1/4 Line		
No Line		11.8	153.2
-		11.1	153.9
4		10.3	154.7
Ct.		9.5	155.5
4		9.0	156.0
-		8.0	157.0
No Line		4.7	160.3
	East Curb Line of Albatross		
No Line		4.3	160.7
-		7.2	157.8
4		8.5	156.5
Ct.		9.3	155.7
4		10.2	154.8
-		11.5	153.2

No Line	11.8	153.2
	East Line of Albatross	
No Line	11.0	154.0
Curb	11.3	153.7
4	10.0	155.0
Ct.	9.1	155.9
4	7.9	157.1
-	6.5	158.5
No	4.3	160.7
	25' East of	
No Line	8.3	156.7
-	9.2	155.8
4	8.8	156.2
Ct.	6.9	158.1
4	5.2	159.8
-	5.0	160.0
No Line	2.6	162.4



Joy

46

50' East of Albatross

100' East of Albat.

M <sup>o</sup> Lm	164.98	1.9	163.1
-		3.6	161.4
4		5.0	160.0
Ct.		5.5	159.4
4		6.6	158.4
-		6.4	158.6
So Lm		5.4	159.6

M <sup>o</sup> Lm	175.69	11.8	163.9
-		11.8	163.9
4		11.4	164.3
Ct.		11.0	164.7
4		10.9	164.8
Cb.		11.7	164.5
So L.		10.7	165.0

~~100~~ 75' East

125' East

So L		3.3	161.7
-		3.3	161.7
4		3.5	161.5
Ct.		3.6	161.4
4		3.1	161.9
-		3.1	161.9
M <sup>o</sup> Lm		2.2	162.8

So		8.3	167.4
-		8.3	167.4
4		8.4	167.3
Ct.		8.5	167.2
4		8.5	167.2
-		8.4	167.3
M <sup>o</sup> Lm		8.7	167.0

11.87 175.69 1.16 163.82

## 150' East of Albatross

So Line	175.69	5.2	170.5
-		5.8	169.9
4		5.5	170.2
Ct.		4.8	170.9
4		5.7	170.5
-		6.0	169.7
N <sup>o</sup> Line		6.2	169.5

## 175' East of Albat.

N <sup>o</sup> L		2.9	173.7
-		1.6	174.1
4		1.1	174.6
Ct.		0.9	174.8
4		2.5	173.2
-		3.2	172.5
So Line		2.8	173.9

10.21 183.83 7.13 173.56

## (200) West Line of Front

So Line	183.83	8.8	175.0
Curve		8.8	175.0
4		8.8	175.0
Ct.		8.0	175.8
4		7.0	176.8
-		6.9	176.9
N <sup>o</sup> Line		7.4	176.4

## East Line of Front.

N <sup>o</sup> Line		3.9	179.9
-		4.5	179.3
4		5.4	178.4
Ct.		6.6	177.2
4		6.4	177.4
-		6.4	177.4
So Line		6.2	177.6



Jury St,

25' East of Front

Re Line	183.83	5.8	178.0
-		5.6	178.2
4		4.8	179.0
Ct.		4.4	179.4
4		4.1	179.7
-		3.6	180.2
N <sup>o</sup> Line		3.6	180.2

50' East of Front

N <sup>o</sup> Line		2.3	181.5
-		3.1	180.7
4		3.6	180.2
Ct.		4.9	179.8
4		4.3	179.5
-		5.2	178.6
No Line		5.3	178.5

75' East of Front

Re Line	183.83	5.1	178.7
-		4.9	178.9
4		4.1	179.7
Ct.		3.3	180.5
4		3.0	180.8
-		2.3	181.5
N <sup>o</sup> Line		1.4	182.4

100' East of Front

N <sup>o</sup> Line		0.4	183.4
-		0.7	183.1
4		1.9	181.9
Ct.		2.3	181.5
4		3.1	180.7
-		3.7	180.1
No Line		3.8	180.0

17.15 194.18 1.80 182.03

Joy St.

49

125' East of Front

No Line	194.18	9.7	184.5
-		10.1	184.1
4		11.3	182.9
Ct.		11.4	182.8
4		11.9	182.3
-		12.4	181.8
No Line		12.5	181.7

150' East of

No Line		11.0	183.2
-		10.9	183.3
4		10.4	183.8
Ct.		9.7	184.5
4		9.5	184.7
-		9.0	185.2
No Line		8.5	185.7

175' East of

No Line	194.18	7.5	186.7
-		7.8	186.4
4		7.6	186.6
Ct.		7.8	186.4
4		8.1	186.1
-		9.0	185.2
No Line		9.3	184.9

(200) West Line at  $1\frac{1}{4}$

No Line		8.0	186.2
-		7.5	186.7
4		7.0	187.2
Ct.		6.5	187.7
4		6.2	188.0
-		6.2	188.0
No Line		6.2	188.0
		7.62	186.56



Joy St. <sup>10/31/04</sup>  
 Hutchison  
 10 + 2

East line of 1st Street

So L.	194.18	36.	190.6
-		30.	191.2
A		28	191.4
Cl.		24	191.8
A		16	192.6
-		16	192.6
N. Line		09	193.3

25' East of

N. Line		106	193.6
-		12	193.0
A		16	192.6
Cl.		16	192.6
A		13	191.9
-		28	191.4
So Line		08	191.4

7.84 199.09 200 191.8

Joy

50' East of 1st St.

	1.27	200.05	198.78
N. Line		6.5	193.6
Cl.		7.1	193.0
1/4		7.4	192.7
Cl		7.7	192.2
1/4		8.2	191.9
C		8.7	191.4
So L.		8.8	191.3

75' East of

So Line		8.2	191.9
C		8.1	192.0
1/4		7.9	192.2
Cl.		7.6	192.5
A		7.2	192.9
C		6.5	193.6
N. Line		5.5	194.6

Continued in Book

Amherst St.

11/23/04 Hutchison Terrace Eas.

B.M.	6.80	218.11	211.31
	7.50	221.03	4.58 213.53
	5.84	224.43	2.45 218.59

Stone P.L. Cor. 28<sup>th</sup> + "A"

B.M.	5.94	218.49
------	------	--------

H46 - 100' N<sup>o</sup> of N.E. Cor. 28<sup>th</sup> + Dartm.  
1119

East Line of 28<sup>th</sup> St.

No Line	5.2	219.2
Curb	4.9	219.5
1/4	4.6	219.8
ct.	4.3	220.1
1/4	4.3	220.4
ct.	4.4	220.0
N <sup>o</sup> Line	4.9	219.5 219.5

25' East of 28<sup>th</sup>

N <sup>o</sup> Line	5.2	219.2
-	5.0	219.4
1/4	5.1	219.3
ct.	5.4	219.0
1/4	5.9	218.5
No line	6.6	217.8
	6.6	217.8



50' East of 28<sup>th</sup>

No Line	224.43	7.5	214.9
-		7.3	217.1
1/4		6.6	217.8
Ch.		6.0	218.4
1/4		5.6	218.8
-		5.6	218.8
M <sup>o</sup> Line		6.0	218.4

75' East of

M <sup>o</sup> L.		6.6	217.8
-		6.1	218.3
4		6.1	218.3
Ch.		6.4	218.0
4		6.6	217.8
-		7.7	216.7
No Line		7.9	216.5

100' East of 28<sup>th</sup>

No Line	224.43	8.2	216.2
-		8.3	216.1
4		7.5	216.9
Ch.		7.0	217.4
4		6.7	217.7
-		7.0	217.4
M <sup>o</sup> Line		7.1	217.3

125' East of

M <sup>o</sup> L.		7.6	216.8
-		7.7	216.7
4		7.6	216.8
Ch.		7.9	216.5
4		8.4	216.0
-		8.8	215.6
No Line		8.9	215.5

306 71884 865 215.78

150' East of 28th

No Line	218.84	3.7	215.1
-		3.8	215.0
4		3.0	215.8
Ct.		2.7	216.1
4		2.7	216.1
-		2.5	216.3
M <sup>o</sup> Line		2.3	216.5

175' East of

M <sup>o</sup> Line		2.3	216.5
-		3.0	215.8
4		2.9	215.9
Ct.		3.5	215.3
4		3.6	215.2
-		4.3	214.5
No Line		4.5	214.3

(Granada)  
(200) West Line of Bean St.

No Line	218.84	5.4	213.4
-		5.0	213.8
4		4.4	214.4
Ct.		4.2	214.6
4		3.7	215.6
-		2.8	216.0
M <sup>o</sup> Line		2.4	216.4

East Line of Bean St.

No Line		6.1	212.7
-		6.2	212.6
4		5.8	213.0
Ct.		5.6	213.2
4		5.3	213.5
-		4.7	214.1
M <sup>o</sup> Line		4.8	214.3



## 25' East of Beam

No. Lm	218.8	47	214.1
-		49	213.9
4		52	213.6
Ch.		56	213.2
4		57	212.9
-		64	212.4
No. Lm		64	212.4

## 50' East of Beam

No. Lm	69	211.9
-	66	212.2
4	60	212.8
Ch.	55	213.3
4	57	213.6
-	52	213.6
No. Lm	47	214.1

## 75' East of Beam

No. Lm	49	213.9
-	50	213.8
4	52	213.6
Ch.	54	213.4
4	61	212.7
-	66	212.2
No. Lm	70	211.8

## 100' East of

No. Lm	70	211.8
-	68	212.0
4	61	212.7
Ch.	55	213.3
4	50	213.8
-	47	214.1
No. Lm	46	214.2

## Amherst St.

55

125' East of Beam

N <sup>o</sup> Line	21884	4.2	214.6
-		4.5	214.3
4		4.9	213.9
Ct.		5.6	213.2
4		6.1	212.7
-		6.7	212.1
So Line		7.0	211.8

150' East of

So Line	6.9	211.9
-	6.7	212.6
4	5.8	213.0
Ct.	5.1	213.7
4	4.7	214.1
-	4.3	214.5
N <sup>o</sup> Line	3.8	215.0

175' East of Beam

N <sup>o</sup> Line	21884	3.7	215.1
-		4.2	214.6
4		4.7	214.1
Ct.		5.2	213.6
4		6.1	212.7
-		6.6	212.2
So Line		7.0	211.8

(200) West line of 29<sup>th</sup>

So Line	6.9	211.9	
-	6.3	212.5	
4	5.5	213.3	
Ct.	4.9	213.9	
4	4.2	214.6	
-	3.6	215.2	
N <sup>o</sup> Line	3.4	215.4	
8.65	213.97	3.52	215.32



East Line of 29<sup>th</sup>

So Line	V1397	9.7	214.3
-		8.4	215.6
+		7.7	216.8
Ct.		6.0	218.0
+		4.9	219.1
-		3.9	220.1
N <sup>o</sup> Line		4.0	220.0

## 25' East of

N <sup>o</sup> Line		2.7	221.3
-		3.2	220.8
+		4.1	219.9
Ct.		5.2	218.8
+		6.4	217.6
-		7.4	216.6
So Line		9.0	215.0

50' East of 29<sup>th</sup>

So Line		8.6	215.4
-		7.3	216.7
+		6.1	217.9
Ct.		5.4	218.6
+		4.6	219.4
-		3.6	220.4
N <sup>o</sup> Line		2.9	221.1

## 75' East of

N <sup>o</sup> L.		3.2	220.8
-		3.9	220.1
+		5.0	219.0
Ct.		5.9	218.1
+		6.8	217.2
-		7.8	216.2
So Line		9.2	214.8

100' East of 29<sup>th</sup>

So Line	223.97	9.2	214.8
-		8.0	216.0
4		7.2	216.8
Ct.		6.2	217.8
4		5.1	218.9
-		4.0	220.0
N <sup>o</sup> Line		3.3	220.7

## 125' East of

N <sup>o</sup> Line		3.7	220.3
-		4.4	219.6
4		5.2	218.8
Ct.		6.0	218.0
4		7.7	216.8
-		8.4	215.6
So Line		9.0	215.0

150' East of 29<sup>th</sup>

So Line	223.97	8.6	215.4
-		7.9	216.1
4		7.0	217.0
Ct.		6.3	217.7
4		5.6	218.4
-		5.0	219.0
N <sup>o</sup> Line		5.4	218.6

## 175' East of

N <sup>o</sup> Line		5.3	218.7
-		6.0	218.0
4		6.4	217.6
Ct.		7.3	216.7
4		7.7	216.3
-		8.2	215.8
So Line		9.1	214.9



## (200) West Line of Dale

So Line	223.97	11.4	212.6	.6
-		10.3		213.7
4		9.5		214.5
Ct.		8.5		215.5
4		7.4		216.6
-		6.6		217.4
N <sup>o</sup> Line		6.1	217.9	

## East Line of Dale

N <sup>o</sup> Line		6.5	217.5	
-		6.5		217.5
4		5.9		218.1
Ct.		5.7		218.3
4		5.7		218.1
-		5.8		218.2
So Line		6.1	217.9	
Bm.		6.4	217.5	

Hint N.E. Cor. of Dale + Amherst

## 25' East of Dale

So Line	223.97	5.0		219.0
-		4.7		219.3
4		4.6		219.4
Ct.		4.5		219.5
4		4.9		219.1
-		5.3		218.7
N <sup>o</sup> Line		5.7		218.3

## 50' East of

N <sup>o</sup> Line		4.8	219.2	
-		4.4		219.6
4		3.9		220.1
Ct.		3.9		220.1
4		3.8		220.2
-		3.8		220.2
So Line		3.8	220.2	

75' East of Dale

	9.91	227.41	217.50
No Lm		6.4	221.0
-		6.5	220.9
14		6.5	220.9
Ct.		6.6	220.8
4		6.9	220.5
-		7.1	220.3
M <sup>o</sup> Lm		7.4	220.0

100' East of

M <sup>o</sup> L.		6.8	220.6
-		6.3	221.1
4		6.2	221.2
Ct.		6.1	221.3
4		5.8	221.6
-		5.6	221.8
No Lm		5.5	221.9

125' East of

No Lm		5.2	222.2
-		5.4	222.0
4		5.6	221.8
Ct.		5.6	221.8
4		5.9	221.5
-		6.2	221.2
M <sup>o</sup> Lm		6.5	220.9

150' East

M <sup>o</sup> Lm		6.0	221.4
-		5.7	221.7
4		5.4	222.0
Ct.		5.3	222.1
1/4		5.0	222.4
-		4.9	222.5
No Lm		4.4	223.0



175' East of Dale

No Line	227.41	4.4	223.0
-		4.5	222.9
4		4.8	222.6
Ct.		5.0	222.4
4		5.2	222.2
-		5.4	222.0
No Line		5.7	221.7

(200) West Line of 30<sup>th</sup>

No Line	5.3	222.1
-	5.7	222.3
4	4.8	222.6
Ct.	4.6	222.8
4	4.3	223.1
-	4.0	223.4
No Line	3.8	223.6

East Line of 30<sup>th</sup>

No Line	227.41	3.1	224.3
-		3.1	224.3
4		3.3	224.1
Ct.		3.4	224.0
4		3.3	224.1
-		3.8	223.6
No Line		4.0	223.4

25' East of

No Line	3.8	223.6
-	3.6	223.8
4	3.4	224.0
Ct.	3.2	224.2
4	2.9	224.5
-	2.6	224.8
No Line	2.4	225.0

B.M. 4.65 230.63 1.41 225.98  
226.00Spk in Cor. of Corral 20'E + 50'S of SE Cor  
of 30<sup>th</sup> + Amherst.

## Amherst.

61

50' East of 30<sup>th</sup>

So Line	230.63	5.3	225.3
-		5.6	225.0
4		5.8	224.8
Ct.		6.1	224.5
4		6.4	224.2
-		6.5	224.1
N <sup>o</sup> Line		6.8	223.8

75' East of

N <sup>o</sup> Line		6.5	224.1
-		6.2	224.4
4		5.9	224.7
Ct.		5.8	224.8
4		5.5	225.1
-		5.2	225.4
So Line		5.1	225.4

100' East of 30<sup>th</sup>

So Line		4.9	225.7
-		5.0	225.6
4		5.0	225.6
Ct.		5.2	225.4
4		5.5	225.1
-		5.6	225.0
N <sup>o</sup> Line		6.0	224.6

125' East of

N <sup>o</sup> Line		5.6	225.0
-		5.3	225.3
4		5.1	225.5
Ct.		5.1	225.5
4		4.8	225.8
-		4.4	226.2
So Line		4.4	226.2



150' East of 30<sup>th</sup>

So Line	230.63	4.1	226.5
-		4.3	226.3
+		4.6	226.0
Ct.		4.5	226.1
+		4.6	226.0
-		4.9	225.7
M <sup>o</sup> Line		5.3	225.3

175' East of 30<sup>th</sup>

M <sup>o</sup> Line		4.9	225.7
-		4.8	225.8
+		4.6	226.0
Ct.		4.3	226.3
+		4.1	226.5
-		3.8	227.8
So Line		3.5	227.1

Amherst 11/23/04

62

(200) West line of Fern St.

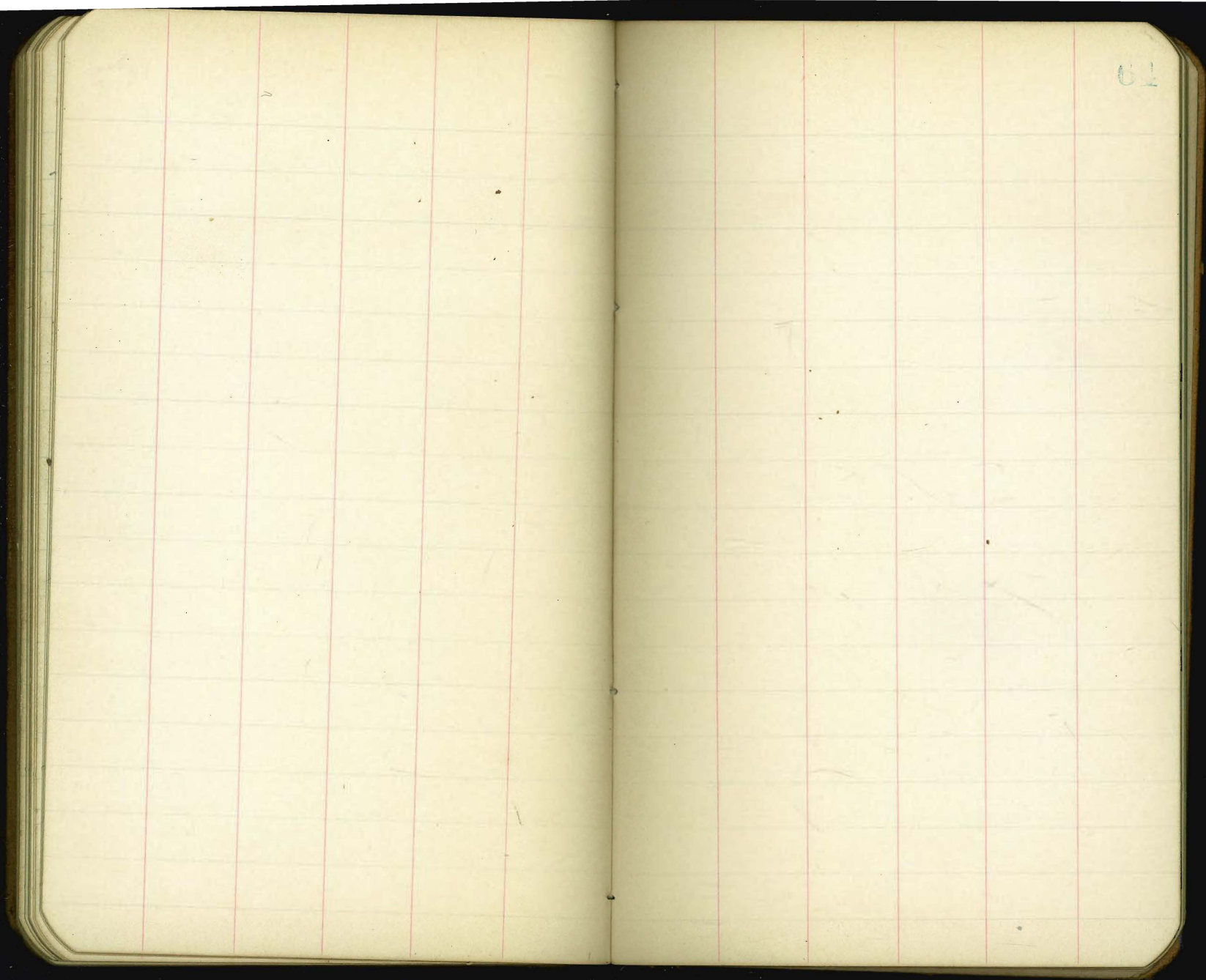
So Line		3.4	227.2
-		3.5	227.1
+		3.8	226.8
Ct.		3.8	226.8
+		4.1	226.5
-		4.2	226.4
M <sup>o</sup> Line		4.5	226.1
B.M.		4.40	226.23

Hub N.W. Cor Amherst + Fern.

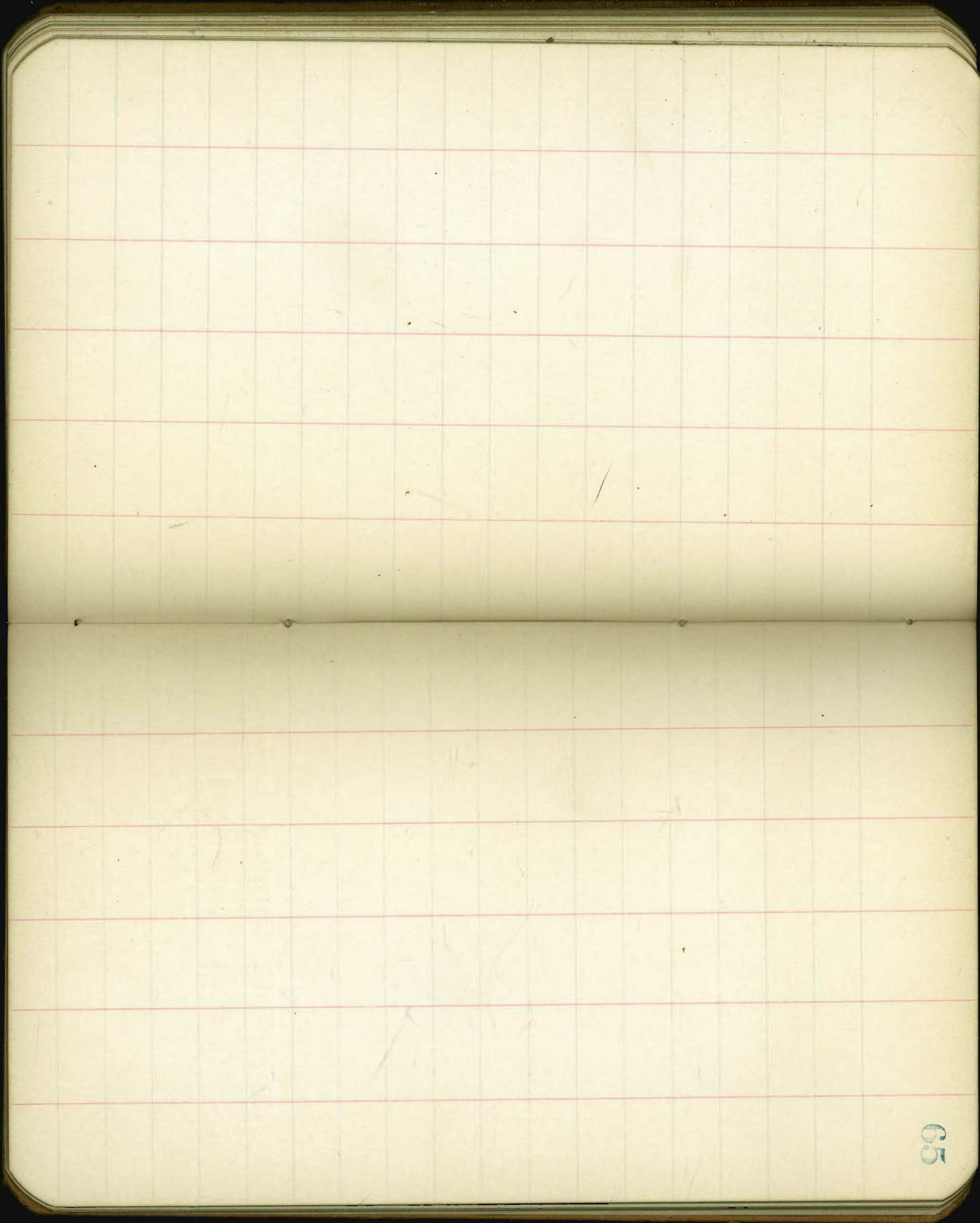
Forest







61











D 10

187' N. of Amherst. (N. Line of Park)

	1028	227.78	217.50	
B.M.		1.10	226.68	Splk
East Line		3.4	224.4	
-		3.7	224.1	
4		3.5	224.3	
Ct.		3.4	224.4	
4		3.2	224.6	
-		2.7	225.1	
West Line		2.5	225.3	

175' N. of Amherst

West Line		2.7	225.1
-		3.2	224.6
4		3.8	224.0
Ct.		4.0	223.8
4		4.3	223.5
-		4.4	223.4
East Line		4.4	223.4

Copied in  
Record B P 182.

2/6/05

63

First  
ing. Fence Post, N. of Park line East side of

150' N. of Amherst

East Line		227.78	5.0	222.8
-			5.5	222.3
4			5.1	222.7
Ct.			5.1	222.6
4			4.4	223.4
-			3.8	224.0
West Line			4.2	223.6

125' N. of Amherst

West Line		5.1	222.7
-		5.7	222.1
4		5.7	222.1
Ct.		5.4	222.4
4		5.6	222.0
-		6.0	221.8
East Line		6.2	221.6

100' N<sup>o</sup> of Amherst

East L	227.78	6.9	220.9
-		6.2	221.6
4		6.4	221.4
ct.		6.9	220.9
4		6.7	221.1
-		5.9	221.9
West Line		5.4	222.4

75' N<sup>o</sup> of

West L.		6.7	219.1
-		6.8	221.0
4		7.6	220.2
ct.		7.5	220.3
4		6.9	220.9
-		7.4	220.4
East Line		7.8	220.0

50' N<sup>o</sup> of Amherst

East Line	227.78	8.3	219.5
-		8.2	219.6
4		8.4	219.4
ct.		8.3	219.5
4		8.3	219.5
-		8.0	219.8
West Line		7.8	220.0

25' N<sup>o</sup> of Amherst

W. L.		9.1	218.7
-		9.4	218.4
4		9.4	218.4
ct.		9.8	218.0
4		9.8	218.0
-		9.2	218.6
East Line		9.2	218.6



No 1 line of Amherst

East line	227.78	10.3	217.5
-		10.9	216.9
+		11.4	216.4
Ct.		11.6	216.2
+		11.4	216.4
-		10.6	217.2

West line		9.9	217.9
	4.49	221.99	217.50

No Curt line of Amherst

East line		4.5	217.5
-		4.9	217.1
+		5.4	216.6
Ct.		6.3	215.7
7' west of Ct.		6.8	215.2
+		6.1	215.9
-		5.2	216.8
West line		4.7	217.3

No 1/4 line of Amherst

West line	221.99	5.4	216.6
-		6.3	215.7
+		6.8	215.2
Ct.		6.2	215.8
+		5.0	217.0
-		4.4	217.6
East line		4.0	218.0

Center line of Amherst

East line		3.8	218.2
-		4.4	217.6
+		5.0	217.0
Ct.		6.0	216.0
+		6.9	215.1
-		7.1	214.9
West line		6.5	215.5

So 1/4 line of Amherst.

West line	221.99	7.6	214.4
5' East of west line		8.7	213.3
Curb		7.7	214.3
4		6.8	215.2
Ct.		6.1	215.9
4		5.3	216.7
-		4.5	217.5
East line		3.9	218.1

So Curb line of Amherst

East line		4.0	218.0
-		4.6	217.4
4		5.6	216.4
Ct.		5.9	216.1
4		6.9	215.1
-		8.3	213.7
4' East of West line		9.6	212.4
West line		8.4	213.6

So line of Amherst.

West line		9.4	212.6
4' East of west line		10.2	211.8
-		8.1	213.9
4		6.8	215.2
Ct.		6.0	216.0
4		5.9	216.1
-		5.0	217.0
East line		4.1	217.9

25' So of Amherst

East line		4.4	217.6
-		5.2	216.8
4		6.4	215.6
Ct.		6.7	215.3
4		7.3	214.7
-		7.8	214.2
West line		9.5	213.5



50' Soot Amhurst.

West Line	221.99	8.6	213.4
-		7.9	214.1
+		7.4	214.6
Ct.		7.0	215.0
+		6.5	215.5
-		5.6	216.4
East Line		4.7	217.3

75' Soot

E. L.		4.6	217.4
-		5.3	216.7
+		6.5	215.5
Ct.		6.9	215.1
+		7.8	214.2
-		8.3	213.7
W. L.		8.9	213.1

100' Soot Amhurst

W. L.	221.99	9.1	212.9
-		8.1	213.9
+		7.6	214.4
Ct.		7.0	215.0
+		6.2	215.8
-		5.3	216.7
East Line		4.6	217.4

125' Soot

E. L.		4.3	217.7
-		5.3	216.7
+		5.7	216.3
Ct.		6.3	215.7
+		6.9	215.1
-		7.6	214.4
W. L.		8.4	213.6

## 150' So of Amherst,

West L.	221.99	7.7	214.3
-		7.0	215.0
4		6.5	215.5
Ct.		5.7	216.3
4		5.2	216.8
-		4.9	217.1
East Line		4.7	217.8

## 175' So of

East L.		4.2	217.8
-		4.6	217.4
4		5.2	216.8
Ct.		5.7	216.3
4		6.3	215.7
-		6.7	215.3
W.L.		7.2	214.8

## 200' So of Amherst

W.L.		7.5	214.5
-		7.3	214.7
4		6.9	215.1
Ct.		6.5	215.5
4		6.1	215.9
-		5.4	216.6
East L.		4.6	217.4

## 225' So of

E.L.		5.3	216.7
-		6.3	215.7
4		7.0	215.0
Ct.		7.5	214.5
4		8.0	214.0
-		8.3	213.7
W.L.		8.5	213.5



Daly

11/23/04

Hutchinson  
7000 ft  
Grass 7A

250' Soot Ambient

West L.	221.99	9.4	212.6
-		8.9	213.1
4		8.7	213.3
ct.		8.2	213.8
4		7.6	214.4
-		6.9	215.1
E.L.		6.2	215.8

275' Soot

E.L.		6.6	215.4
-		7.0	215.0
4		7.2	214.8
ct.		7.6	214.4
4		7.8	214.2
-		8.1	213.9
West Line		8.6	213.4

(300) 11<sup>th</sup> Line of Dartmouth

West Line	221.99	7.3	214.7
-		6.9	215.1
4		6.7	215.3
ct.		6.3	215.7
4		6.3	215.7
cut		6.2	215.8
East Line		5.8	216.2

B.M.

2.02 219.97 H46

58' South 5' East of S.E. Cor. Dartmouth + Dal.

Cont in Book 128.

















Quince St.

4<sup>th</sup> to 5<sup>th</sup>

5.02 282.26 277.24  
3.73 282.11 3.88 278.38

West Line of 5<sup>th</sup> Street

No Line 3.3 278.8  
Cb 3.4 278.7  
1/4 3.4 278.7  
Ct 3.7 278.4  
1/4 3.1 279.0  
Cb 3.2 278.9  
No Line 3.4 278.7

25' west of 5<sup>th</sup>

No Line 3.3 278.8  
Ct 2.7 279.4  
1/4 2.9 279.2  
Ct 3.1 278.9  
1/4 3.1 279.0  
Ct 3.0 279.1  
No Line 3.2 278.9

12/ } Hutchison  
12/ } Evans  
12/ } Lewis

West  
50' East of 5<sup>th</sup>

No Line 3.5 278.6  
Ct 3.4 278.7  
1/4 3.4 278.7  
Ct 3.7 278.4  
1/4 3.8 278.3  
Ct 3.4 278.7  
No Line 3.4 278.7

75' west of 5<sup>th</sup>

No Line 4.7 277.4  
Ct 4.9 277.2  
1/4 5.0 277.1  
Ct 5.2 276.9  
1/4 4.6 277.5  
Cb 4.2 277.9  
No Line 3.9 278.2

100' west of 5<sup>th</sup>

No Line 5.2 276.9  
Cb 6.2 275.9  
1/4 6.9 275.2  
Ct 7.3 274.8  
1/4 7.2 274.9  
Ct 6.8 275.3  
No Line 6.7 275.4

Quince St.

82

125' West of 5<sup>th</sup>

M <sup>o</sup> Line	282.11	7.7	274.4
Cb		8.1	274.0
1/4		8.6	273.5
Ct.		9.1	273.0
1/4		9.2	272.9
Cb.		9.1	273.0
No Line		7.7	274.2

150' West of 5<sup>th</sup>

No Line		11.0	271.1
Cb.		11.5	270.6
1/4		11.4	270.7
Ct.		10.4	271.7
1/4		10.1	272.0
Cb.		9.7	272.4
M <sup>o</sup> Line		9.5	272.6

175' West of 5<sup>th</sup>

M <sup>o</sup> Line	282.11	11.3	270.8
Cb.		11.6	270.5
1/4		11.8	270.3
Ct.		12.1	270.0
1/4		12.5	269.6
Cb.		12.8	269.3
No Line		12.7	269.2

(200) East line of 4<sup>th</sup>

No Line		12.7	269.2
Cb.		13.6	268.5
1/4		13.3	268.8
Ct.		13.7	268.9
1/4		13.0	269.1
Cb.		13.2	268.9
M <sup>o</sup> Line		12.6	269.5



GRAPES ST.

1.08 110.14 109.06

West line of Albatross

No Line	3.9	106.2
Cb.	4.1	106.0
Gutter	5.2	104.9
1/4	5.2	104.9
Ct.	5.0	105.1
1/4	5.9	104.2
Gutter	5.8	104.3
Curb	5.1	105.0
No Line	5.0	105.1

25' west of Albatross

No Line	7.7	102.4
Cb.	7.7	102.4
Gutter	8.1	102.0
1/2	7.8	102.8
Ct.	6.5	103.6
1/4	6.7	103.4
Gutter	6.6	103.5
Curb	6.0	104.1
No Line	5.9	104.2

12/ { Hutchinson  
21/ { Evans  
1/24 { Lewis

88

50' west of Albatross

No Line	110.14	7.4	102.7
Cb.		7.6	102.5
Gutter		8.2	101.9
1/4		8.7	101.9
Ct.		8.5	101.6
1/4		9.2	100.9
Gutter		10.1	100.0
Cb.		9.6	100.5
No Line		9.8	100.3

75' west of Albatross

No Line		11.6	98.5
Cb.		11.2	98.9
Gutter		11.7	98.4
1/4		11.0	99.1
Ct.		10.4	99.7
1/4		10.4	99.7
Gutter		10.6	99.5
Cb.		9.6	100.5
No Line		9.3	100.8

1.48 100.94 10.68 99.46

Grato

84

100' west of Albatross

M <sup>o</sup> Line	100.94	2.0	98.9
Curb		2.2	98.7
Gutter		2.9	98.0
1/4		2.9	98.0
ct.		2.9	98.0
1/4		4.1	96.8
Gutter		4.6	96.3
Curb		4.3	96.6
No Line		4.5	96.5

125' west of Albatross

No Line		6.2	94.7
ct.		6.2	94.7
Gutter		6.2	94.8
1/4		5.8	95.1
ct.		5.1	95.8
1/4		4.5	96.4
Gutter		4.4	96.5
Curb		3.5	97.1
M <sup>o</sup> Line		3.6	97.3

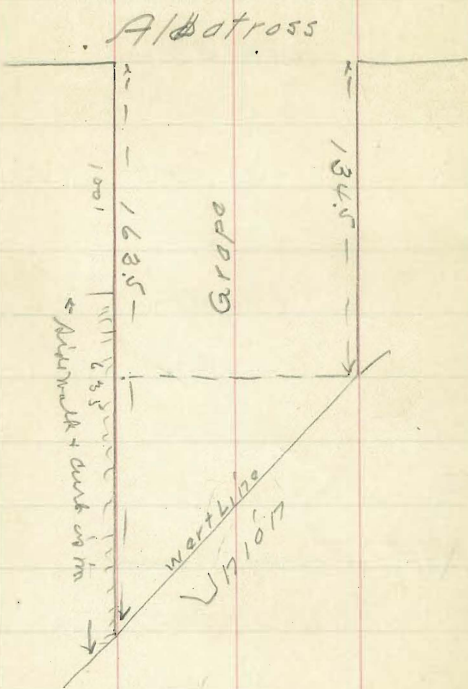
1345' west of Albatross

M <sup>o</sup> Line	110.94	3.9	97.0
<del>ct.</del> Curb		4.5	96.4
Gutter		4.9	96.0
1/4		5.1	95.8
ct.		5.1	95.8
1/4		6.2	94.7
<sup>Curb</sup> Gutter		6.7	94.2
No Line		6.8	94.1

East Line of Union

No Line		6.8	94.6
ct.		6.6	94.3
1/4		6.2	94.7
ct.		5.8	95.1
1/4		5.8	95.1
<sup>Curb</sup> Gutter		6.3	94.6
M <sup>o</sup> Line		6.0	94.9





Return to City Engineers Office  
City Hall, San Diego, Cal.

*Summ 4 1/2 to 5 1/2*

3535  
0265  
2270  
12912  
12639

TRAVERSE TABLE FOR TRANSIT BOOK.

From 1° to 90° for a distance of 100  
Return to City Engineers Office  
City Hall, San Diego, Cal.

Degrees	DEGREES.		¼ DEGREE.		½ DEGREE.		¾ DEGREE.		Degrees
	Lat.	Dep.	Lat.	Dep.	Lat.	Dep.	Lat.	Dep.	
0			100.00	0.44	100.00	0.87	99.99	1.31	89
1	99.98	1.75	99.98	2.18	99.97	2.62	99.95	3.05	88
2	99.94	3.49	99.92	3.93	99.91	4.36	99.88	4.80	87
3	99.86	5.23	99.84	5.67	99.81	6.10	99.79	6.54	86
4	99.76	6.98	99.73	7.41	99.69	7.85	99.66	8.28	85
5	99.62	8.72	99.58	9.15	99.54	9.58	99.50	10.02	84
6	99.45	10.45	99.41	10.89	99.36	11.32	99.31	11.75	83
7	99.25	12.19	99.20	12.62	99.14	13.05	99.09	13.49	82
8	99.03	13.92	98.97	14.35	98.90	14.78	98.84	15.21	81
9	98.77	15.64	98.70	16.07	98.63	16.50	98.56	16.93	80
10	98.48	17.36	98.40	17.79	98.33	18.22	98.25	18.65	79
11	98.16	19.08	98.08	19.51	97.99	19.94	97.90	20.36	78
12	97.81	20.79	97.72	21.22	97.63	21.64	97.53	22.07	77
13	97.44	22.50	97.34	22.92	97.24	23.34	97.13	23.77	76
14	97.03	24.19	96.92	24.62	96.81	25.04	96.70	25.46	75
15	96.59	25.88	96.48	26.30	96.36	26.72	96.25	27.14	74
16	96.13	27.56	96.00	27.98	95.88	28.40	95.76	28.82	73
17	95.63	29.24	95.50	29.65	95.37	30.07	95.24	30.49	72
18	95.11	30.90	94.97	31.32	94.83	31.73	94.69	32.14	71
19	94.55	32.56	94.41	32.97	94.26	33.38	94.12	33.79	70
20	93.97	34.20	93.82	34.61	93.67	35.02	93.51	35.43	69
21	93.36	35.84	93.20	36.24	93.04	36.65	92.88	37.06	68
22	92.72	37.46	92.55	37.86	92.39	38.27	92.22	38.67	67
23	92.05	39.07	91.88	39.47	91.71	39.87	91.53	40.27	66
24	91.35	40.67	91.18	41.07	91.00	41.47	90.81	41.87	65
25	90.63	42.26	90.45	42.66	90.26	43.05	90.07	43.44	64
26	89.88	43.84	89.69	44.23	89.49	44.62	89.30	45.01	63
27	89.10	45.40	88.90	45.79	88.70	46.17	88.50	46.56	62
28	88.29	46.95	88.09	47.33	87.88	47.72	87.67	48.10	61
29	87.46	48.48	87.25	48.86	87.04	49.24	86.82	49.62	60
30	86.60	50.00	86.38	50.38	86.16	50.75	85.94	51.13	59
31	85.72	51.50	85.49	51.88	85.26	52.25	85.04	52.62	58
32	84.80	52.99	84.57	53.36	84.34	53.73	84.10	54.10	57
33	83.87	54.46	83.63	54.83	83.39	55.19	83.15	55.56	56
34	82.90	55.92	82.66	56.28	82.41	56.64	82.16	57.00	55
35	81.92	57.36	81.66	57.71	81.41	58.07	81.16	58.42	54
36	80.90	58.78	80.64	59.13	80.39	59.48	80.13	59.83	53
37	79.86	60.18	79.60	60.53	79.34	60.88	79.07	61.22	52
38	78.80	61.57	78.53	61.91	78.26	62.25	77.99	62.59	51
39	77.71	62.93	77.44	63.27	77.16	63.61	76.88	63.94	50
40	76.60	64.28	76.32	64.61	76.04	64.94	75.76	65.28	49
41	75.47	65.61	75.18	65.93	74.90	66.26	74.61	66.59	48
42	74.31	66.91	74.02	67.24	73.73	67.56	73.43	67.88	47
43	73.14	68.20	72.84	68.52	72.54	68.84	72.24	69.15	46
44	71.93	69.47	71.63	69.78	71.33	70.09	71.02	70.40	45
45	70.71	70.71							
Degrees	Dep.	Lat.	Dep.	Lat.	Dep.	Lat.	Dep.	Lat.	Degrees
	DEGREES.		¼ DEGREE.		½ DEGREE.		¾ DEGREE.		