

<sup>ND</sup> St. Walnut to Quince 1-15  
Maple-Front to Albatross. 18-23  
Juniper 3<sup>RD</sup> to 4<sup>TH</sup>. 30-40  
18<sup>th</sup> St C to Park 45-50  
24<sup>th</sup> Str I to K

242

F.B. 242



Table showing the difference of latitude and departure in running 80 chains at any course from 1 to 60 minutes.

MINUTES	LKS.	MINUTES	LKS.	MINUTES	LKS.
1	2 1/3	21	49	41	95 2/3
2	4 2/3	22	51 1/3	42	98
3	7	23	53 2/3	43	100 1/3
4	9 1/3	24	56	44	102 2/3
5	11 2/3	25	58 1/3	45	105
6	14	26	60 2/3	46	107 1/3
7	16 1/3	27	63	47	109 2/3
8	18 2/3	28	65 1/3	48	112
9	21	29	67 2/3	49	114 1/3
10	23 1/3	30	70	50	116 2/3
11	25 2/3	31	72 1/3	51	119
12	28	32	74 2/3	52	121 1/3
13	30 1/3	33	77	53	123 2/3
14	32 2/3	34	79 1/3	54	126
15	35	35	81 2/3	55	128 1/3
16	37 1/3	36	84	56	130 2/3
17	39 2/3	37	86 1/3	57	133
18	42	38	88 2/3	58	135 1/3
19	44 1/3	39	91	59	137 2/3
20	46 2/3	40	93 1/3	60	140

Return to City Engineers Office  
City Hall, San Diego, Cal.

TABLE FOR RUNNING MEASURES.

In the following table the first column shows the angle, the second the number of links to be added to a chain on the slopes, to make one chain, horizontal measurement.

Angle	COR. IN LINKS	Angle	COR. IN LINKS	Angle	COR. IN LINKS	Angle	COR. IN LINKS
0		0		0		0	
4	0.24	11	1.88	18	5.14	25	10.54
5	0.38	12	2.24	19	5.76	26	11.26
6	0.55	13	2.63	20	6.42	27	12.24
7	0.76	14	3.06	21	7.11	28	13.37
8	0.98	15	3.53	22	7.85	29	14.34
9	1.24	16	4.02	23	8.64	30	15.47
10	1.55	17	4.56	24	9.47	35	22.07

Return to City Engineers Office  
City Hall, San Diego, Cal.



2<sup>114</sup> Street. 1 1

So line of Walnut to 150' So  
of Duiney.  $\frac{1}{30} \times 5$  Hutchison  
Evans  
Barooks.

6.26 270.59 264.88 87.84

150' So. of Duiney

East line	10.8	259.8
-	10.5	260.1
4	10.2	260.4
ct.	9.6	261.0
4	9.3	261.3
-	9.0	261.6
W.L.	9.0	261.6

125' So of Duiney

W.L.	7.4	263.2
-	7.4	263.2
4	7.4	263.2
ct.	7.4	263.2
4	7.4	263.2
-	7.7	262.9
W.L.	8.0	262.6

100' Soot Dinner

East Dr	270.59	6.0	264.6
-		6.0	264.6
A		6.1	264.5
Cl.		6.3	264.3
A		6.5	264.1
-		6.5	264.1
W.L.		6.5	264.1

75' Soot

W.L.		6.4	264.2
-		6.7	264.4
A		6.0	264.6
Cl.		5.7	264.9
A		5.3	265.3
-		5.2	265.4
W.L.		5.1	265.5

50' Soot

E.L.		4.6	266.0
-		4.9	265.7
A		5.1	265.4
Cl.		5.4	265.2
A		5.7	264.9
-		5.9	264.7
W.L.		6.2	264.4

75' Soot

W.L.		6.0	264.6
-		5.6	265.0
A		5.4	265.2
Cl.		5.0	265.6
A		4.9	265.7
-		4.6	266.0
W.L.		4.4	266.2



So Line of Dunes

East Line	270.09	42	266.4
-		44	266.2
4		45	266.1
Ct.		48	265.8
4		51	265.5
-		55	265.1
W.L.		58	264.8

So Crest Line of Dunes

W.L.		56	265.0
-		58	265.3
4		50	265.6
Ct.		45	265.8
4		45	266.1
-		44	266.2
East L.		40	266.6

So 1/4 Line of Dunes

East L.	38	266.8
-	43	266.3
4	44	266.2
Ct.	46	266.0
4	49	265.7
-	52	265.4
W.L.	55	265.1

Center Line of Dunes

W.L.	53	265.3
-	57	265.5
4	50	265.6
Ct.	46	266.0
4	44	266.2
-	41	266.5
East L.	38	266.8

11<sup>o</sup> 1/4 Lms  
 East L 270.57 3.8  
 - 4.1  
 A 4.7  
 Ct. 4.4  
 A 4.7  
 - 4.9  
 W.L. 5.4

11<sup>o</sup> Curt Line  
 W.L. 5.4  
 - 5.0  
 A 4.5  
 Ct. 4.2  
 A 4.0  
 - 3.9  
 E.L. 3.6

266.8  
 266.5  
 266.4  
 266.2  
 265.9  
 265.7  
 265.2

265.2  
 265.0  
 266.0  
 266.4  
 266.6  
 266.7  
 267.0

11<sup>o</sup> Line of Dunes  
 East Line 3.6 267.0  
 - 3.6 267.0  
 A 4.0 266.6  
 Ct. 4.4 266.2  
 A 4.5 266.1  
 - 5.0 265.6  
 W.L. 5.2 265.4

25<sup>o</sup> 11<sup>o</sup> of Dunes  
 W.L. 5.8 264.8  
 - 4.9 265.7  
 A 4.5 266.1  
 Ct. 4.1 266.5  
 A 3.7 266.9  
 - 3.4 267.2  
 # East L 3.2 267.4



50' N<sup>o</sup> of Quines

East Log	270.57	3.0	267.6
-		3.1	267.5
+		3.7	266.9
Ct.		4.0	266.6
+		5.1	265.5
-		7.2	263.4
W.L.		8.6	262.0

75' N<sup>o</sup> of

W.L.		11.0	259.6
-		9.7	260.9
+		7.5	263.1
Ct.		5.6	263.0
+		4.2	266.4
-		3.7	267.4
East Log		2.8	267.8

5  
5

100' N<sup>o</sup> of

East L.		3.7	267.4
-		4.7	265.9
+		5.5	265.1
Ct.		7.6	263.0
+		9.5	261.1
-		10.8	259.8
W.L.		12.0	258.6

125' N<sup>o</sup> of

W.L.		12.3	258.3
-		11.4	259.2
+		10.3	260.3
Ct.		9.2	261.4
+		7.7	262.9
-		6.1	264.5
East L.		4.0	266.6

155' 171° of Hummer

East L.	270.57	4.5	266.1
-		6.6	264.0
4		8.2	262.4
Ct.		9.4	261.2
4		10.5	260.1
-		11.4	259.2
W.L.		12.4	258.2

175' 171° of

W.L.		11.8	258.8
-		10.6	260.0
4		10.0	260.6
Ct.		9.2	261.4
4		8.3	262.2
-		6.6	264.0
East L.		4.7	265.9

3.96 271.88 2.67 267.92

200' 171° of

East L.	271.88	7.2	264.7
-		8.4	263.5
4		9.2	262.7
Ct.		10.0	261.9
4		10.7	261.2
-		11.8	260.1
W.L.		12.7	259.0

225' 171° of

W.L.		12.7	259.2
-		11.7	260.2
4		10.6	261.3
Ct.		9.8	262.1
4		9.1	262.8
-		8.4	263.5
East L.		7.8	264.1



250' 111° of Lumber

ES	271.88	7.8	264.1
-		8.2	263.7
A		8.6	263.3
ct.		9.5	262.4
A		10.5	261.4
-		11.5	260.4
West L		12.2	259.7

275' 111° of

W.L.		11.4	260.5
-		10.6	261.3
A		9.8	262.1
ct.		9.1	262.8
A		8.6	263.3
-		7.5	264.4
East L		7.2	264.7

(300) #10 Lumber at Redwood

East L	5.8	266.1
-	6.6	265.3
A	7.6	264.3
ct.	8.3	263.6
A	9.1	262.8
-	9.7	262.2
W.L.	10.5	261.4

50 Curt Line at Redwood

West L	10.3	261.6
-	9.2	262.7
A	8.9	263.0
ct.	8.4	263.5
A	7.6	264.3
-	6.7	265.2
East L	5.5	266.4

## 50 1/4 Line of Redwood

East L.	271.88	5.5	266.4
-		6.8	265.1
+		7.4	264.5
ct.		8.2	263.7
+		8.3	263.6
-		9.1	262.8
W.L.		9.9	262.0

## Center Line of Redwood

W.L.		9.7	262.2
-		9.1	262.8
+		8.1	263.8
ct.		7.7	264.2
+		7.2	264.7
-		6.6	265.3
East Line		5.3	266.0

## 110 1/4 Line at

East L.	57	266.5
-	6.4	265.5
+	6.8	265.1
ct.	7.5	264.4
+	8.2	263.7
-	9.0	262.9
W.L.	9.4	262.5

## 110 Curb Line

W.L.	8.5	263.4
-	8.2	263.7
+	7.7	264.2
ct.	7.1	264.8
+	6.7	265.2
-	6.0	265.9
East Line	5.2	266.7



11° Line of Redwood

East Line	271.88	4.3	267.6
-		5.2	266.7
+		6.0	265.9
ct.		6.8	265.1
+		7.3	264.6
-		7.7	264.2
W.L.		7.4	264.5

25° 11' of Redwood

W.L.		6.2	265.7
-		6.3	265.6
+		5.7	266.0
ct.		6.5	266.4
+		4.9	267.0
-		3.7	268.2
East L		4.3	269.6

9 9  
50° 11' of Redwood

East L	1.6	270.3
-	2.9	269.0
+	4.2	267.7
ct.	4.8	267.1
+	5.3	266.6
-	5.5	266.4
W.L.	5.8	266.1

75° 11' of Redwood

<del>East Line</del> West L	4.4	267.5
-	4.4	267.5
+	4.1	267.8
ct.	3.8	268.1
+	3.1	268.8
-	4.3	269.6
East Line	1.2	270.7

100' N<sup>o</sup> of Redwood

East Line	271.88	0.5	271.4
-		0.8	271.1
4		2.0	269.9
ct.		2.2	269.7
4		2.6	269.3
-		2.3	269.6
W. Line		2.4	269.5
125' N <sup>o</sup> of			
W. L.		1.4	270.5
-		1.2	270.7
4		1.5	270.4
ct.		1.1	270.8
4		0.8	271.1
-		0.1	271.8
East Line		+ 0.2	272.1
6.56	278.01	0.43	271.45

100' N<sup>o</sup> of Redwood

East Line	278.01	5.6	272.4
-		5.8	272.2
4		6.3	271.7
ct.		6.8	271.2
4		6.7	271.3
-		7.0	271.0
W. L.		7.1	270.9
175' N <sup>o</sup> of Redwood			
W. L.		7.0	271.0
-		6.5	271.5
4		6.2	271.8
ct.		6.1	271.9
4		5.8	272.2
-		5.4	272.6
E. L.		5.5	272.5



61

200' 11" of

East L	278.01	5.0	273.0
-		5.3	272.7
+		5.8	272.4
Ct.		5.9	272.1
+		6.1	271.9
-		6.2	271.8
W.L.		6.7	271.3

225' 11" of

W.L.		6.3	271.7
-		6.1	271.9
+		5.6	272.4
Ct.		5.4	272.6
+		5.2	272.8
-		4.9	273.1
E.L.		4.6	273.4

11

250' 11" of

East L		4.5	273.5
-		4.7	273.3
+		5.0	273.0
Ct.		5.2	272.8
+		5.4	272.6
-		5.7	272.3
W.L.		6.1	271.9

275' 11" of

W.L.		5.9	272.1
-		5.6	272.4
+		5.2	272.8
Ct.		4.5	273.5
+		4.8	273.2
-		4.3	273.7
East L		4.1	273.9

11  
(300) So Line of Spring

East Lim	278.01	4.0	274.0
-		4.2	273.8
4		4.7	273.3
Ct.		4.5	273.5
4		5.7	272.3
-		5.5	272.5
W.L.		5.9	272.1

So Curt Lim of Spring

W.L.		6.4	271.6
-		5.4	272.6
4		5.6	272.4
Ct.		5.0	273.0
4		5.1	272.9
-		4.7	273.3
East L		4.7	273.3

12  
12  
So 1/4 Line of Spring

E.L.	4.8	273.2
-	5.3	272.7
4	5.5	272.5
Ct.	5.2	272.8
4	5.5	272.5
-	5.7	272.3
W.L.	6.2	271.8

Center line of Sp.

W.L.	6.2	271.8
-	5.9	272.1
4	5.5	272.5
Ct.	5.4	272.6
4	5.0	273.0
-	4.9	273.1
E.L.	4.6	273.4



SI

11<sup>th</sup> 1/4 Line of Spruce

East Line	278.01	4.3	273.7
-		4.9	273.1
4		5.1	272.9
Ct.		5.2	272.8
4		5.4	272.6
-		5.6	272.4
W.L.		6.1	271.9
11 <sup>th</sup> Curt Line			
W.L.		5.8	272.2
-		5.5	272.5
4		5.1	272.9
Ct.		4.9	273.1
4		4.6	273.4
-		4.5	273.5
East Line		4.1	273.9

13

13

11<sup>th</sup> Line of Spruce

East Line	3.6	274.4
-	4.2	273.8
4	4.7	273.3
Ct.	4.9	273.1
4	4.9	273.1
-	5.4	272.6
W.L.	5.5	272.5
25 <sup>th</sup> 11 <sup>th</sup> of		
W.L.	5.5	272.5
-	4.7	273.3
4	4.3	273.7
Ct.	3.9	274.1
4	3.5	274.5
-	2.9	275.1
East Line	2.9	275.1

50' N of Spruce

E.L.	278.01	2.8	275.2
-		2.7	275.1
4		3.5	274.5
Ct.		3.8	274.2
4		4.1	273.9
-		4.4	273.6
W.L.		5.4	272.6
W.L.		5.3	272.7
-		4.2	273.8
4		3.9	274.1
Ct.		3.4	274.6
4		3.2	274.8
-		2.7	275.3
East L.		2.5	275.5

75' N of

W.L.		5.3	272.7
-		4.2	273.8
4		3.9	274.1
Ct.		3.4	274.6
4		3.2	274.8
-		2.7	275.3
East L.		2.5	275.5

100' N of

East L.	2.5	275.5
-	2.7	275.3
4	3.0	275.0
Ct.	3.3	274.7
4	3.8	274.2
-	4.2	273.8
W.L.	5.0	273.0
W.L.	4.6	273.4
-	4.0	274.0
4	3.5	274.5
Ct.	3.1	274.9
4	2.7	275.3
-	2.5	275.5
East L.	2.3	275.7

125' N of

W.L.	4.6	273.4
-	4.0	274.0
4	3.5	274.5
Ct.	3.1	274.9
4	2.7	275.3
-	2.5	275.5
East L.	2.3	275.7



150' 11° of

East line	278.01	2.2	275.8
-		2.4	275.6
+		2.6	275.4
ct.		3.1	274.9
+		3.3	274.7
-		3.7	274.1
W.L.		4.4	273.6

3.68 278.01 1.00 277.01

175' 11° of

East line		4.8	275.9
-		4.7	276.0
+		5.1	275.6
ct.		5.6	275.1
+		6.0	274.7
-		6.5	274.2
W.L.		7.0	273.7

200' 11° of

W.L.	280.69	6.9	273.8
-		6.5	274.2
+		5.9	274.8
ct.		5.6	275.1
+		5.2	275.5
-		4.8	275.9
E.L.		4.5	276.2

225' 11° of

E.L.		4.2	276.5
-		4.7	276.0
+		4.7	276.0
ct.		5.0	275.7
+		5.8	274.9
-		6.4	274.3
W.L.		6.7	274.0

	250' N <sup>o</sup> of Spring		
W. Line	280.69	6.6	274.1
-		6.1	274.6
4		5.6	275.1
ct.		5.2	275.5
4		4.7	276.0
-		4.4	276.3
East L		4.2	276.5
	275' N <sup>o</sup> of		
East L		4.0	276.7
-		4.1	276.6
4		4.6	276.1
ct.		4.9	275.8
4		5.6	275.1
-		5.8	274.9
W.L.		6.5	274.2

2 <sup>179</sup>

16  
**16**

(300) So Line of Thom St.		
West L	6.5	274.2
-	5.7	274.8
4	5.7	275.0
ct.	5.1	275.6
4	4.9	275.8
-	4.3	276.4
East L	3.8	276.9
	So Curt Line	
E. L.	3.7	277.0
-	4.5	276.2
4	5.1	275.6
ct.	5.1	275.6
4	5.7	275.0
-	6.1	274.6
W.L.	6.7	274.0



So 1/4 Line of

W.L.	28069	6,7	274.0
-		6,0	274.7
4		5,7	275.7
Ct.		5,1	275.6
4		4,9	275.8
-		4,6	276.1
East L		3,6	277.1

Center Line of Thom

E.L.		3,7	277.0
-		4,5	276.2
4		4,1	275.9
Ct.		5,2	275.5
4		5,6	275.1
-		6,0	274.7
W.L.		6,5	274.2

110 1/4 of Thom

W.L.		6,4	274.3
-		5,7	274.8
4		5,4	275.3
Ct.		4,9	275.8
4		4,9	275.8
-		4,4	276.3
E.L.		3,5	277.2

110 Curt Line

E.L.		3,4	277.3
-		4,7	276.0
4		4,8	275.9
Ct.		4,7	276.0
4		5,4	275.3
-		6,0	274.7
W.L.		6,5	274.2

11° 11' at Thom St.

W.L.	280.69	6.5	274.2
-		6.1	274.6
4		5.7	275.0
Ct.		4.9	275.8
4		5.0	275.7
-		4.4	276.3
East L		3.4	277.3

25° 11' at Thom

East L		3.3	277.4
-		4.4	276.3
4		4.8	275.9
Ct		4.9	275.8
4		5.5	275.2
-		6.2	274.5
West L		6.2	274.5

50° 11' at

W.L.		6.0	274.7
-		6.1	274.6
4		4.8	275.9
Ct.		4.4	276.3
4		4.6	276.1
-		4.2	276.5
E.L.		2.7	278.0

75° 11' at

E.L.		3.1	277.6
↘ Curt		4.0	276.7
4		4.5	276.2
Ct.		4.4	276.3
4		5.2	275.5
-		5.7	275.0
W.L.		5.8	274.9



100' N. of Thom

W.L.	28069	5.5	275.2
-		5.4	275.3
4		5.1	275.6
ct.		4.7	276.0
4		4.0	276.7
-		3.5	277.2
E.L.		3.0	277.7

125' N. of

E.L.		2.6	278.1
-		2.9	277.8
4		3.1	277.6
ct.		3.7	277.0
4		4.0	276.7
-		4.4	276.3
W.L.		5.0	275.7

150' N. of

W.L.		4.6	276.1
-		4.0	276.7
4		3.4	277.3
ct.		3.1	277.6
4		2.5	278.2
-		2.0	278.7
E.L.		2.0	278.7

175' N. of

E.L.		1.8	278.9
-		1.8	278.9
4		2.4	278.3
ct.		2.9	277.8
4		3.1	277.6
-		3.8	276.9
W.L.		4.5	276.2

200' N<sup>o</sup> of Thom

W.L.	280.69	4.7	276.0
-		3.9	276.8
4		3.4	277.3
Ct.		2.8	277.9
4		2.3	278.4
-		1.8	278.9
East Line		1.7	279.0

6.46 283.80 3.35 277.34

225' N<sup>o</sup> of

<del>East L.</del>	<del>4.7</del>
<del>-</del>	<del>4.9</del>
<del>4</del>	<del>5.4</del>
<del>Ct.</del>	<del>6.0</del>
<del>4</del>	<del>6.6</del>
<del>-</del>	<del>7.0</del>
<del>West Line</del>	<del>7.5</del>

225' N<sup>o</sup> of Thom

West Line	283.80	7.4	276.4
-		6.8	277.0
4		6.3	277.5
Ct.		5.9	277.9
4		5.5	278.3
-		4.9	278.9
E.L.		4.6	279.2

250' N<sup>o</sup> of

E.L.	4.3	279.5
-	4.7	279.1
4	5.1	278.7
Ct.	5.3	278.5
4	5.7	278.1
-	6.0	277.8
West Line	6.5	277.6



US

(275' N. of Thorne) Upos

W.L.	283.80	6.2	277.6
-		5.7	278.1
+		5.2	278.6
ct.		4.8	279.0
+		4.5	279.3
-		4.3	279.5
E.L.		4.1	279.7

(300) So Line at Upos

East Line		3.6	280.2
-		4.1	279.7
+		4.4	279.4
ct.		4.7	279.1
+		4.9	278.9
-		5.39	278.4
W.L.		5.7	278.1

1668  
21. 21

Upos It is Graded

N<sup>o</sup> Line at Upos

W.L.	5.0	278.8
-	5.0	278.8
+	4.6	279.2
ct.	4.2	279.6
+	3.8	280.0
-	3.4	280.4
E.L.	2.8	281.0

25' N<sup>o</sup> of N<sup>o</sup>s

East L,	2.6	281.2
-	3.1	280.7
+	3.4	280.4
Ch,	3.6	280.2
+	4.4	279.4
-	4.6	279.2
West Line	5.4	278.4

50' N<sup>o</sup> of N<sup>o</sup>s

W.L,	4.8	279.0
-	4.5	279.3
+	4.3	279.5
Ch,	3.7	280.1
+	3.2	280.6
-	2.8	281.0
East L	2.5	281.3

75' N<sup>o</sup> of

East L,	2.5	281.3
-	3.0	280.8
+	3.1	280.7
Ch,	3.9	279.9
+	4.2	279.6
-	4.8	279.0
W.L,	4.9	278.9

100' N<sup>o</sup> of

W.L,	5.8	278.0
-	5.2	278.2
+	4.8	279.0
Ch,	4.1	279.7
+	3.7	280.1
-	3.3	280.5
East Line	2.4	281.4



25

125' 111° of Upon

East L	283.80	3.5	280.3
-		3.8	280.0
-		4.4	279.4
ct.		4.8	279.0
-		5.2	278.6
-		5.7	278.1
W.L.		4.7	279.1

156' 111° of Upon

West L		3.3	280.5
-		4.9	278.9
-		4.6	279.2
ct.		4.5	279.3
-		4.2	279.6
-		3.3	280.5
East Lm		3.6	280.2

2<sup>nd</sup> Street. 23

(166.7) So Line of Walnut

East Line	2.8	281.0
-	3.0	280.8
-	3.5	280.3
ct	3.9	279.9
-	4.1	279.7
-	4.0	279.8
West Line	3.7	280.1
	0.91	282.89

Maple St.  
Front to Albatross

	2.63	243.06	240.43
	0.13	230.51	230.38
	0.01	219.18	219.17
East Line of Front			
M <sup>o</sup> Line		3.4	215.8
-		3.8	215.4
+		4.5	214.7
ct.		4.6	214.6
+		5.3	213.9
-		5.5	213.7
So Line		5.9	213.3
East Curb Line of Front			
So Line		7.6	211.6
-		7.5	211.7
+		7.3	211.9
ct.		6.8	212.4
+		5.8	213.4

1/30/05 { Hutchinson  
Evans  
Brooks

24

		5.1	214.1
M <sup>o</sup> Line		5.0	214.2
East 1/4 Line of			
M <sup>o</sup> Line		6.4	212.8
-		7.1	212.1
+		7.9	211.3
ct.		8.6	210.6
+		9.0	210.2
-		9.5	209.7
So Line		9.0	210.2
Center Line			
So Line		11.3	207.9
-		10.5	208.7
+		10.4	208.8
ct.		9.6	209.6
+		9.4	209.8
-		8.6	210.6
M <sup>o</sup> Line		8.5	210.7



West 1/4 line of front

No Line	219.18	12.1
-		12.3
4		12.3
Ct.		12.3
4		12.7
-		12.6
No Line		12.2

~~0.00~~ ~~207.41~~ 12.77 206.91

W<sup>s</sup> 4.11 211.02 206.91

West 1/4 line of

No Line	2.1	206.9
-	3.7	207.3
4	3.7	207.8
Ct.	2.8	208.2
4	2.7	208.3
-	2.3	208.7
No Line	2.1	208.9

West Curt Line

No Line	211.02	4.0	207.0
-		4.2	206.8
4		4.3	206.7
Ct.		4.4	206.6
4		4.9	206.1
-		4.8	206.2
No Line		4.2	206.8

West Line of front

No Line	4.4	206.6
-	4.5	206.5
1/4	6.5	204.5
Ct.	7.0	204.0
1/4	7.1	203.9
-	7.2	203.8
No Line	7.4	203.6

## 25' west of Front

M <sup>o</sup> Lm	211.92	11.0	200.0
-		11.1	199.9
+		11.3	199.7
Ct.		11.3	199.7
+		10.0	201.0
-		8.5	202.5
No Lm		8.6	202.4
50' west of			
No Lm		12.3	198.7
-		12.3	198.7
+		13.6	197.4
Ct.	0.44	12.75	198.27
+		7.3	196.4
-		7.1	196.6
-		2.4	196.3
M <sup>o</sup> Lm		3.0	195.7

## 75' west of Front

M <sup>o</sup> Lm	198.71	8.8	189.9
-		7.7	191.0
+		6.8	191.9
Ct.		6.1	192.6
+		5.3	193.4
-		5.0	193.7
No Lm		4.3	194.4
100' west of			
No Lm		7.7	191.0
-		8.1	190.6
+		9.0	189.7
Ct.		9.3	189.4
+		9.9	188.8
-		10.9	187.8
M <sup>o</sup> Lm		11.7	187.0



125' West of

M <sup>o</sup> Line	19871	15.6	183.1
-		13.5	185.2
+		12.3	186.4
ct		11.5	187.2
+		11.7	187.0
-		11.3	187.4
So Line		11.0	187.7
0.02	187.66	11.09	187.62

150' West of

So Line		1.8	185.9
-		2.0	185.7
+		2.6	185.1
ct		2.9	184.8
+		3.7	184.0
-		5.3	182.4
M <sup>o</sup> Line		6.9	180.8

175' West of

M <sup>o</sup> Line	187.66	9.6	178.1
-		6.9	180.8
+		5.3	182.4
ct		4.7	183.0
+		4.4	183.3
-		4.0	183.7
So Line		3.7	184.0

(200) East Line of Albatross

So Line		6.0	181.7
-		5.9	181.8
+		6.0	181.7
ct		6.2	181.5
+		6.8	180.9
-		8.0	179.7
M <sup>o</sup> Line		10.8	176.9

18  
East Curt Line of Albations

M <sup>o</sup> Line	187.66	11.8	175.9
-		9.3	178.4
4		7.6	180.3
Ct.		6.9	180.8
4		7.0	180.7
-		6.7	181.0
No Line		6.8	180.9

East 1/4 Line

No L.		7.1	180.6
-		7.6	180.1
4		7.6	180.1
Ct.		8.0	179.7
4		9.2	178.5
-		10.3	177.4
M <sup>o</sup> Line		12.5	175.2

Center Line of Albations

M <sup>o</sup> Line	13.7	174.0
-	10.3	177.4
4	9.4	178.3
Ct.	8.4	179.3
4	7.9	179.8
-	8.9	179.7
No Line	8.1	179.6

West 1/4 Line

No Line	8.6	179.1
-	8.4	179.3
4	8.3	179.4
Ct.	8.6	179.1
4	10.0	177.7
-	11.8	175.9
M <sup>o</sup> Line	17.4	170.3

3.97 182.22 9.41 178.25



Mapei St,

West Curt Line

No Line	182.22	15.4	166.8
-		10.5	171.7
A		6.2	176.0
CT.		4.0	178.2
A		3.6	178.6
-		3.6	178.6
No Line		3.7	178.5

West Line of Albatross

No Line		4.3	177.9
-		4.2	178.0
A		4.4	177.9
CT.		5.3	176.9
A		7.3	174.9
-		15.6	166.6
No Line		22.6	159.6

12.00	193.71	0.51	181.71
12.15	202.97	0.89	192.82

209,5929

29

204.97

11.53 216.12 0.38 204.59

6.53 209.59

29

30

30



Helms  
 Davis  
 Mahan  
 1/31/05

Juniper Str.

HI

West line of 4<sup>th</sup> Str.

+ B.M. 212.74  
 HI

N.L.	+5.98	218.72	5.7	213.0
5			6.00	212.7
10			5.9	212.8
15			6.2	212.5
20			6.3	212.4
Center			6.7	212.0
5			6.6	212.1
10			6.6	212.1
15			6.6	212.1
20			6.7	212.0
25 L			6.8	211.9
TP	4.55	210.87	12.40	206.32

B.M. Spike Tel. Pol. S.E. Cor. 4<sup>th</sup> Juniper 212.74

Juniper

31  
 31

10 West of 4<sup>th</sup> Str.

HI

5 L	+	210.87	6.70	204.2
5			6.80	204.1
10			7.20	203.7
15			7.20	203.7
20			6.70	204.2
Center			6.9	204.0
5			6.5	204.4
10			5.9	205.0
15			5.8	205.1
20			4.8	206.1
N.L.			4.9	206.0

18

## Juniper

	20' W of 4 Str	HI	-	
NL	+	20.87	12.10	198.8
5			11.90	199.0
10			12.30	198.6
15			12.70	198.2
20			13.40	197.5
Center			13.40	197.5
5			13.30	197.6
10			14.00	196.0
15			14.30	196.6
20			14.30	196.6
25			14.60	196.3
TP	+5.51	204.12	-12.26	198.61

Juniper  
30' W. of 4 Str32  
32

	HI	-		
SL	+	204.12	14.4	189.7
5			14.5	189.6
10			14.1	190.0
15			14.0	190.1
20			14.0	190.1
Center			14.0	190.1
5			13.5	190.6
10			13.4	190.7
15			13.3	190.8
20			12.8	191.3
NL			11.6	192.5
TP	2.02	195.19	10.96	193.76



38

Juniper

40' W of 4<sup>th</sup> St.

NL	+	HI 195.18	8.9	186.3
5			9.7	186.5
10			10.20	185.0
15			10.10	185.1
20			11.20	184.0
Center			10.5	184.7
5			11.7	183.5
10			11.8	183.4
15			11.7	183.5
20			12.1	183.1
S.L			11.4	183.8
TP	+ 2.89	186.55	11.52	183.66

33

33

Juniper

50' W of 4<sup>th</sup> St.

S.L	+	HI 186.55	8.4	178.2
5			8.0	178.6
10			7.5	179.1
15			7.2	179.4
20			6.1	180.5
Center			6.2	180.2
5			5.6	181.0
10			5.6	181.0
15			4.1	182.5
20			3.1	183.5
25			3.5	183.1
NL			2.4	184.2

28

Juniper

60' W. of 4 Str

N L	+ #I 186.55	-	
		1.2	185.4
5		2.3	184.3
10		3.4	183.2
15		4.8	181.8
20		5.8	180.8
Center		6.4	180.2
Center 5		7.5	179.1
10		8.9	177.9
15		10.3	176.3
20		11.0	175.6
S L		11.8	174.8
S L		12.5	

Juniper

70' West of 4 Str

34

34

S L	+ #I 186.55	-	
		13.4	173.2
5		12.3	174.3
10		11.4	175.2
15		10.4	176.2
20		9.1	177.5
Center		7.2	179.4
5		5.7	180.9
10		4.2	182.4
15		2.9	183.7
20		1.4	185.2
N L		0.0	186.6



48

Juniper  
80' West of 4 Str

	HI		
NL	186.55	0.9	185.7
5		2.1	184.5
10		3.4	183.2
15		4.6	182.0
20		6.3	180.3
Center		7.9	178.7
25		9.5	177.1
10		10.90	175.7
15		12.10	174.5
20		13.2	173.4
SL		13.8	172.8

Juniper

35

35

90' West of 4 Str

	HI		
S.L	186.55	13.6	173.0
5		13.5	173.1
10		13.2	173.4
15		12.1	174.5
20		11.1	175.5
Center		9.7	176.9
5		8.1	178.5
10		6.4	180.2
15		5.8	180.8
20		3.9	182.7
NL		3.0	183.6

Juniper 100' W of 4<sup>th</sup> St

	HI			
NL	+	186.55	5.4	181.2
5			6.4	180.2
10			7.8	178.8
15			8.9	177.7
20			10.3	176.3
Center			11.3	175.3
5			12.8	173.8
10			13.2	173.4
15			13.4	173.2
20			13.4	173.2
S.L			13.4	173.2

Juniper  
110' W. of 4<sup>th</sup> St

	HI			
S.L	+	186.55	11.7	174.9
5			13.4	173.2
10			13.2	173.4
15			13.1	173.5
20			13.1	173.5
Center			13.6	173.0
5			12.7	173.9
10			11.7	174.2
15			10.4	176.2
20			9.6	177.0
NL			8.8	177.8

<sup>36</sup>  
36



Juniper			
120'	W of 4 Str	HI	
N.L	+	186.55	12.2
5			12.3
10			12.9
15			13.00
20			12.7
Center			12.8
5			12.9
10			12.8
15			11.4
20			10.1
S.L			8.5
			174.4
			174.3
			173.7
			173.6
			173.9
			173.8
			173.7
			173.8
			175.2
			176.5
			176.1

Juniper				37
130'	W of 4 Str	HI		
S.L	-	186.55	6.9	179.7
5			7.7	178.9
10			9.0	177.6
15			10.	176.6
20			10.8	175.8
Center			11.2	175.4
5			11.4	175.2
10			12.0	174.6
15			12.3	174.3
20			12.5	174.1
N.L			12.0	174.6

Juniper			
	140'	W. of # 4 Str	
	+	#1	-
NL		186.55	9.00
5			8.7
10			8.9
15			8.9
20			8.3
Center			8.1
5			7.3
10			6.9
15			5.8
20			4.6
S.L			3.8

177.6  
177.9  
177.7  
177.7  
178.3  
178.5  
179.3  
179.7  
180.8  
182.0  
182.8

Juniper			
	150'	W. of # 4 Str	
	+	#1	-
S.L		186.55	1.4
5			1.7
10			2.3
15			3.3
20			4.0
Center			4.5
5			4.8
10			5.5
15			6.1
20			6.5
NL			6.5

38

38

185.2  
184.9  
184.3  
183.3  
182.6  
182.1  
181.8  
181.1  
180.5  
180.1  
180.1



88  
 Juniper  
 160' N. of 4 Sts.  
 + HI -  
 NL 186.55 3.4 183.2  
 5 3.2 183.4  
 10 2.2 184.4  
 15 1.6 185.0  
 20 1.0 185.6  
 Center 0.3 186.3  
 5 0.1 186.5  
 TP +1227 198.37 0.45 186.10  
 10 10.9 187.5  
 15 10.8 187.6  
 20 10.9 187.5  
 S.L. 10.4 188.0

39  
 39  
 Juniper  
 170' West of 4 Sts.  
 + HI -  
 S.L. 198.37 7.1 191.3  
 5 7.8 190.6  
 10 7.6 190.8  
 15 7.3 191.1  
 20 7.0 191.4  
 Center 7.0 191.4  
 5 7.1 191.3  
 10 8.0 190.4  
 15 9.3 189.1  
 20 11.2 187.2  
 NL 12.0 186.4

68  
 180' Juniper West of 4<sup>th</sup> Str  
 + HI  
 198.37 6.5  
 5. 5.1  
 10 3.1  
 15 1.6  
 20 1.5  
 Center 1.0  
 5 2.1  
 10 2.4  
 15 2.7  
 20 1.4  
 SL 0.19  
 TP +11.86 210.04 0.19 198.18

191.9  
 193.0  
 195.3  
 196.8  
 196.9  
 197.4  
 196.8  
 196.0  
 196.7  
 197.0  
 198.2

198.18

40  
 190' Juniper West of 4<sup>th</sup> Str  
 + HI  
 210.04 9.4  
 5 9.4  
 10 8.7  
 15 8.0  
 20 7.8  
 Center 6.9  
 5 7.7  
 10 9.1  
 15 10.7  
 20 12.0  
 NL 11.7  
 198.4

40

200.7  
 200.7  
 201.4  
 202.1  
 202.3  
 203.2  
 202.4  
 201.0  
 199.4  
 198.1  
 198.4



Juniper

	200'	EL	3rd	Str
	+	HI	-	
NL0		210.04	8.1	202.0
5			7.0	203.1
10			5.2	204.9
15			3.8	206.3
20			2.9	207.2
Center <sup>25'</sup>			2.6	207.5
5			3.1	207.0
10			3.3	206.8
15			3.7	206.4
20			3.8	206.3
S.L			4.00	206.7
T.P.	+10.48	218.59	1.93	208.11

Juniper

	10'	EL	3rd	Str	#
	+	HI	-		41
SL		218.59	9.9	209.7	
5			9.8	208.8	
10			9.5	209.1	
15			8.9	209.7	
20			9.2	209.4	
Center			9.1	209.5	
5			9.0	209.6	
10			8.9	209.7	
15			9.3	209.3	
20			10.0	208.6	
NL			11.4	207.2	

Juniper  
 EL 20' W of EL 3 + a St.  
 + HI  
 NL 218.59 6.7 211.9  
 5 7.0 211.6  
 10 7.2 211.4  
 15 7.5 211.1  
 20 7.7 210.7  
 Center 8.8 209.8  
 5 8.3 210.3  
 10 8.0 210.6  
 15 8.5 210.1  
 20 8.5 210.1  
 S.L 8.5 210.1

Juniper  
 30' W of EL 3 + a St.  
 + HI  
 S.L 218.59 7.3 211.3  
 5 7.0 211.6  
 10 6.3 212.3  
 15 6.8 211.8  
 20 6.8 211.8  
 Center 6.6 212.0  
 5 6.4 212.2  
 10 6.2 212.4  
 15 5.9 212.7  
 20 5.8 212.8  
 NL 6.6 213.0

42



*Juniper*  
center of 3rd Str.

NL	+	218.59	4.15	214.4
5			4.4	214.4
10			4.6	214.0
15			4.9	213.7
20			5.3	213.3
center			5.4	213.3
5			5.3	213.3
10			5.7	212.9
15			5.8	212.8
20			5.6	213.0
S.C.			6.1	212.5

Followed  
 front  
 measure

18<sup>th</sup> Street to Park

0.49      69.45      68.96

North Line of C. Str.

E Line	12.1	57.4
Curb	12.4	57.1
$\frac{1}{4}$	12.9	56.6
Ct.	13.1	56.4
$\frac{1}{4}$	13.4	56.1
Curb	13.4	56.1
WL	13.7	56.1
25' North of C. Str.		
W Line	14.1	55.4
Curb	14.3	55.2
2' west of center	13.5	56.0
$\frac{1}{4}$	13.4	56.1
Center	13.3	56.2
$\frac{1}{4}$	13.3	56.2
Curb	15.5	54.0
E.L.	15.4	54.1

7' N. of C. Str.

EL	69.45	13.0	56.5
Curb		13.9	55.6
5' N. of Curb		13.8	55.7
7' N. of Curb		13.6	55.9
Center		13.1	56.4
$\frac{1}{4}$		13.5	56.0
Ct.		13.5	56.0
WL		13.4	56.1
50' North of C. Str.			
WL		14.7	54.8
Curb		14.6	54.9
$\frac{1}{4}$		13.9	55.6
Center		13.3	56.2
$\frac{1}{4}$		14.3	55.2
Ct.		15.1	54.4
EL		15.3	54.2



18° Str.

75' N. of C.

WL	69.45	15.4
C.		15.1
$\frac{1}{4}$		14.6
4' W. of Center		12.9
Center		12.9
6' E. of "		12.9
# " "		13.8
$\frac{1}{4}$		13.9
C.		14.6
EL		13.8
EL	100' N. of C.	13.9
C.		13.8
$\frac{1}{4}$		13.9
11' E. of C.		13.7
6' " "		12.4
6' "		12.6
4' W. of C.		12.6
9' " "		14.2
$\frac{1}{4}$		14.8
C.		14.9
WL		14.6

54.1	W. Line
54.4	C.
54.9	$\frac{1}{4}$
56.6	W. of C.
56.6	Center
56.6	E. of C.
55.7	$\frac{1}{4}$
55.6	C.
54.9	EL
55.7	
55.6	EL
55.7	C.
55.6	$\frac{1}{4}$
55.8	6' E. of C.
57.1	
56.9	C.
56.9	
55.3	5' W. of C.
54.7	$\frac{1}{4}$
54.6	C.
54.9	
	W. L.

19° Str.

125' N. of C.

69.45	14.3	55.2
	14.2	55.3
	14.7	54.8
	12.0	57.5
	12.0	57.5
	12.0	57.5
	13.7	58.8
	13.5	56.0
	13.5	56.0
150' N. of C.		
	13.0	56.5
	13.1	56.4
	13.3	56.2
	11.3	58.2
	11.2	58.3
	11.5	58.0
	13.4	55.1
	12.2	57.3
	12.3	57.2

45

18<sup>th</sup> Str.  
175' N. of C.

W.L.	69.45	12.9
C.		13.0
$\frac{1}{4}$		12.5
4' N. of C.		10.1
Center		10.2
6'E of "		10.0
$\frac{1}{4}$		12.6
C.		12.6
E.L.		12.6
Line	200' N. of C.	11.7
C.		11.8
$\frac{1}{4}$		11.2
6'E of C.		8.8
Ct.		9.8
4' N. of Ct.		8.6
$\frac{1}{4}$		11.8
Cb.		11.8
W.L.		11.4

57.6	W.L.
56.5	C.
57.0	$\frac{1}{4}$
59.4	5' N. of C.
59.3	Ct.
59.5	7'E of "
56.9	$\frac{1}{4}$
56.9	C.
56.9	E.L.
57.8	Line
57.7	C.
57.3	$\frac{1}{4}$
60.7	9'E of Ct.
60.7	Ct.
60.9	$\frac{1}{4}$
57.7	Cb.
57.7	W.L.
58.1	

18<sup>th</sup> Str.  
225' N. of C.

46

69.45	8.0	61.5
	8.4	61.1
	9.0	60.5
	7.3	62.2
	7.6	61.9
	7.6	61.9
	9.7	59.8
	10.3	59.2
	10.0	59.5
250' N. of C.	7.9	61.6
	7.6	61.9
	9.5	62.0
	6.3	63.2
	6.3	63.2
	6.0	63.5
	5.4	64.1
	5.0	64.5



18" Str.

275' N. of C

W.L.	69.45	3.6
℄℄		3.9
$\frac{1}{4}$		5.2
℄+		5.1
$\frac{1}{4}$		5.9
℄.		5.7
EL		5.0

SoL of B.

EL		3.9
℄℄.		4.0
$\frac{1}{4}$		3.9
℄.		4.00
$\frac{1}{4}$		3.8
℄.		2.9
W.L.		2.4

65.9

65.6

64.3

64.4

63.6

63.8

64.5

65.6

65.5

65.6

65.5

65.7

66.6

67.1

W.L.

℄.

 $\frac{1}{4}$ 

Center

 $\frac{1}{4}$ 

℄℄.

EL

EL

℄℄.

 $\frac{1}{4}$ 

℄+

 $\frac{1}{4}$ 

℄℄.

W.L.

18" Str.

South ℄℄. Line B. Str

69.45

2.1

2.3

3.1

3.5

3.3

3.2

3.0

2.5

2.6

2.9

3.1

2.6

1.7

1.2

47  
47

67.4

67.2

66.4

66.0

66.2

66.3

66.5

67.0

66.9

66.6

66.4

66.9

67.8

66.1

18° Str.

W.L.	Center of B. Str. 69.45	0.7	68.8
86.		1.1	68.4
$\frac{1}{4}$		1.8	67.7
86.		2.6	66.9
$\frac{1}{4}$		2.7	66.8
86.		2.2	67.3
E.L.		1.8	67.7

11.  $\frac{1}{4}$  B. Str.

E.L.		1.6	67.9
86.		1.7	67.8
$\frac{1}{4}$		2.1	67.4
86.		1.6	67.9
$\frac{1}{4}$		1.8	67.7
86.		0.9	68.6
W.L.		0.6	68.9

18° Str.

48

North Course L B. Str. 69.45	00	69.5
	0.6	68.9
	1.0	68.5
	1.2	68.3
	1.2	68.3
	1.0	68.5
	1.1	68.4

T.P. 12.55 81.52 68.96

11. 2 B. Str.

E.L.		12.4	69.1
86.		12.4	69.1
$\frac{1}{4}$		12.1	69.4
86.		12.5	69.0
$\frac{1}{4}$		12.7	68.8
86.		11.6	69.9
W.L.		10.9	70.6



18° Str.

25' North of $\bar{S}$		81.5L	9.7	71.8
WL			9.7	71.8
			10.5	71.0
Et			10.7	70.8
$\frac{1}{4}$			10.4	71.1
Cb			10.3	71.2
EL			10.3	71.2
50' North of $\bar{S}$				
EL			9.1	72.4
Cb			9.0	72.5
$\frac{1}{2}$			8.9	72.6
Et			9.3	72.2
$\frac{1}{4}$			9.3	72.2
Cb			8.6	72.9
WL			8.3	73.2

18° Str.

75' North of  $\bar{S}$

49 49

81.5L		7.3	74.2
WL			74.2
Cb		7.8	73.7
$\frac{1}{4}$		7.4	74.1
Et		7.6	73.9
$\frac{1}{4}$		7.8	73.7
Cb		7.7	73.8
EL		7.7	73.8
100' North of $\bar{S}$			
EL		6.3	75.2
Cb		6.1	75.4
$\frac{1}{2}$		5.7	75.8
Et		6.1	75.4
$\frac{1}{4}$		4.9	76.6
Cb		5.7	75.8
WL		5.7	75.8

15<sup>th</sup> St.  
125' N. of B

W.L	81.5L	4.8	76.7
66		4.5	77.0
$\frac{1}{4}$		4.0	77.5
68		4.5	77.5
7'E of 68		3.3	78.2
$\frac{1}{4}$		3.4	78.1
66		3.7	77.8
EL		4.3	77.2

150' N. of B

EL		2.7	78.8
66		2.3	79.2
$\frac{1}{4}$		2.3	79.2
68		3.5	78.0
$\frac{1}{4}$		3.2	78.3
66		3.9	77.6
W.L		3.9	77.6

18<sup>th</sup> St.  
175' N. of B

W.L	81.5L	3.0	78.2
66		3.0	78.5
$\frac{1}{4}$		2.6	78.9
68		2.9	78.7
$\frac{1}{4}$		1.7	79.8
66		1.3	80.2
EL		1.9	79.6

200' N. of B

EL		0.6	80.9
66		1.0	80.5
$\frac{1}{4}$		1.5	80.0
68		1.8	79.7
$\frac{1}{4}$		2.5	79.0
66		2.8	78.7
W.L		2.8	78.7



18<sup>th</sup> Sta  
225' N. of B

W.L	81.51	1.9	79.6
66.		1.9	79.6
1/4		1.7	79.8
6+		1.0	80.5
1/4		0.7	80.8
66		0.3	81.2
EL		10.2	81.71

12.97 94.35 0.13 81.38  
12.97  
94.35  
250' N. of B

EL		11.2	83.2
6.		12.3	82.1
1/4		12.3	82.1
6.		13.0	
6.		12.6	81.8
7 <sup>th</sup> Sta.		12.7	81.7
1/4		13.3	81.1
6.		13.6	80.8
W.L		13.1	81.3

275' N. of B

W.L	94.35	12.7	81.7
66		13.2	81.2
1/4		12.8	81.6
6+		11.7	82.7
1/4		11.7	82.7
66		11.0	83.4
EL		10.0	84.4

300' N. of B - P.L. & L.

EL		9.8	84.6
66		10.3	84.1
1/4		10.8	83.6
6+		10.7	83.7
1/4		11.6	82.8
66		11.3	83.1
W.L		11.2	83.2

18' St.

South Curb Line A St.

W.L.	94.35	10.9	83.5
ℓℓ.		10.4	84.0
$\frac{1}{4}$		10.8	83.6
ℓt.		9.9	84.5
$\frac{1}{4}$		10.5	83.9
ℓℓ.		10.1	84.3
EL		9.9	84.5

South  $\frac{1}{4}$  A St.

EL		9.3	85.1
ℓℓ.		9.7	84.7
$\frac{1}{4}$		9.8	84.6
ℓt.		9.0	85.4
$\frac{1}{4}$		9.9	84.5
ℓℓ.		10.2	84.2
W.L.		9.9	84.5

18' St.

Center A St.

W.L.	94.35	8.7	85.7
ℓℓ.		9.5	84.9
$\frac{1}{4}$		9.6	84.8
ℓt.		8.7	85.7
$\frac{1}{4}$		9.3	85.1
ℓℓ.		9.1	85.3
EL		8.9	85.5

North  $\frac{1}{4}$  A St.

EL		8.4	86.0
ℓℓ.		8.7	85.7
$\frac{1}{4}$		8.8	85.6
ℓt.		8.3	86.1
$\frac{1}{4}$		8.6	85.8
ℓℓ.		7.9	86.5
W.L.		7.1	87.3

52



18<sup>th</sup> St.  
North Curve

W.L.	94.35	6.1	88.3
El.		6.1	88.3
$\frac{1}{4}$		7.4	87.0
Et		7.8	86.6
$\frac{1}{4}$		9.0	85.4
El.		8.7	85.7
EL		8.7	85.7

North Line of A St.

EL		8.4	86.0
El.		9.0	85.4
$\frac{1}{4}$		9.2	85.2
Et I		8.6	85.8
• II		7.4	87.0
$\frac{1}{4}$		6.6	87.8
El.		5.2	89.2
W.L.		4.3	90.1

18<sup>th</sup> St.  
25' North of A.

W.L.	94.35	2.6	91.8
El.		3.5	90.9
$\frac{1}{4}$		4.3	90.1
11/14 of Et		5.9	88.5
Et.		7.5	86.9
$\frac{1}{4}$		8.4	86.0
Center		8.4	86.0
El.		7.8	86.6
EL		7.3	87.1

50' North of A.

EL		6.3	88.1
El.		6.7	87.7
Center		7.3	87.1
$\frac{1}{4}$ of Et		7.0	87.4
Center		6.5	87.9
8' North of "		4.5	89.9
10' " " "		2.2	92.2
$\frac{1}{4}$		2.2	92.2
El.		1.7	92.7
W.L.		0.0	94.4

T.P. 6.23 99.015 1.57 92.78

75' N. of A Str.

W.L.	99.05	3.0	96.0
Cb.		4.7	94.3
$\frac{1}{4}$		5.1	93.9
7/16 of C.		5.1	93.9
3' " "		8.4	90.6
Cb.		9.8	89.2
$\frac{1}{4}$		10.4	88.6
Gutter		10.6	88.4
Curb		9.8	88.2
EL		9.8	89.2

18' Str.  
77.3' N. of A Str.

54

99.05	8.9	90.1
EL		90.1
Curb	8.7	90.3
Gutter	9.3	89.7
$\frac{1}{4}$	9.2	89.8
Gutter	8.5	90.5
6 1/2' of v	3.7	95.3
$\frac{1}{4}$	3.1	95.9
Cb.	1.9	97.1
W.L.	0.8	98.2



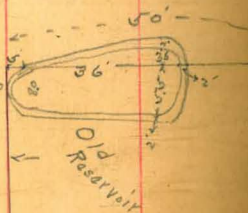
7/26/05

Hutchinson  
Emans  
Series

25 <sup>1/2</sup>/<sub>0</sub>



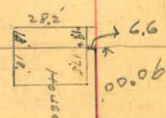
F 51



G



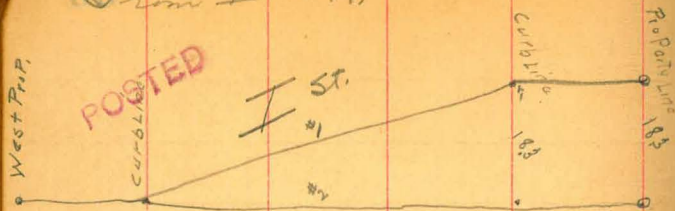
401.3



300.5

26 <sup>1/2</sup>/<sub>0</sub>

24<sup>th</sup> Street  
From I to K.



	2.56	114.03	111.47
No Line at I St. #1			
East Line	2.3		111.7
Ch.	3.0		111.0
VK	3.3		110.7
Ch	3.2		110.8
H	3.7		110.3
West Curb	3.8		110.2
No Line at I St #2			
West Line	3.1		110.9
Ch.	3.8		110.2
4	4.0		110.0
Ch.	3.7		110.3
4	3.4		110.6

Factor

Hutchinson  
Evans  
Survey

56

Ch.	3.5	110.5
East Line	2.8	111.2
25' South I. Measured on West Line		
E.L.	3.5	110.5
-	4.1	109.9
-	4.2	109.8
Ch.	3.7	110.3
4	4.4	109.6
-	4.3	109.7
W.L.	3.7	110.3
20' South I.		
West L.	4.5	109.5
-	5.2	108.8
4	4.7	109.3
Ch.	4.0	110.0
4	5.0	109.0
-	4.6	109.4
East L.	4.4	109.6



75' Soot I,

East L.	114.03	5.1	108.9
-		5.2	108.8
4		5.1	108.9
Ct.		4.4	109.6
4		5.2	108.8
-		5.8	108.2
West L.		5.5	108.5

100' Soot

West L.		6.0	108.0
-		6.1	107.9
4		5.5	108.5
Ct.		5.2	108.8
4		5.9	108.1
-		5.8	108.2
East L.		5.5	108.5

125' Soot

East		6.2	107.8
-		6.0	108.0
4		7.0	107.0
Ct.		6.6	107.4
4		6.5	107.5
-		6.9	107.1
West L.		6.8	107.2

145' Soot I

West L.		7.9	106.1
-		8.3	105.7
4		9.1	104.9
Ct.		8.8	105.2
4		8.5	105.5
-		6.6	107.4
East L.		6.4	107.6

150' Soot

East L.	114.03	6.9	107.1
Ct.		6.5	108.5
4' west of curb		8.2	105.8
1/4		9.1	104.9
Ct.		9.3	104.7
1/4		9.7	104.3
Gutter		10.0	104.0
Ct.		9.3	104.7
West L.		9.1	104.9

175' Soot

West L.		10.3	103.7
Ct.		10.7	103.3
Gutt.		10.6	103.4
1/4		10.7	103.3
Ct.		10.9	103.1
1/4		9.9	104.1
5' west of curb		9.3	104.7

Curb.	114.03	7.9	106.1
East L.		7.6	106.4

200' Soot

West L.		11.3	102.7
Ct.		11.8	104.2
Gutter		12.4	101.6
1/4		11.7	102.3
Ct.		11.7	102.3
1/4		11.1	102.9
4' west of curb		10.6	103.4
Ct.		9.4	104.6
East L.		8.8	105.2

1142 103.81 11.62 102.39



225' South T.

East L.	103.81	0.3	103.5
Cb,		0.8	103.0
3' West of Cb		1.8	102.0
1/4		2.1	101.7
Cb,		2.5	101.3
4		2.6	101.2
Gutter		3.5	100.3
Cb		2.5	101.3
West L.		2.2	101.6
250' South			
West L.		3.4	100.4
Cb		3.7	100.1
Gutter		4.4	99.4
1/4		3.6	100.0
Cb		3.6	100.2
1/4		3.6	100.2
4' West of Cb		3.3	100.5

POSTED

Cb,	2.1	101.7
East L.	1.2	102.6
275' South		
East L.	2.0	101.8
4' West of East L.	3.6	100.2
Curb	3.7	100.1
2' West of Cb	4.4	99.4
1/4	4.7	99.1
Cb,	4.6	99.2
1/4	4.9	98.9
Gutter	5.2	98.6
Cb	5.2	98.6
West L.	4.6	99.2

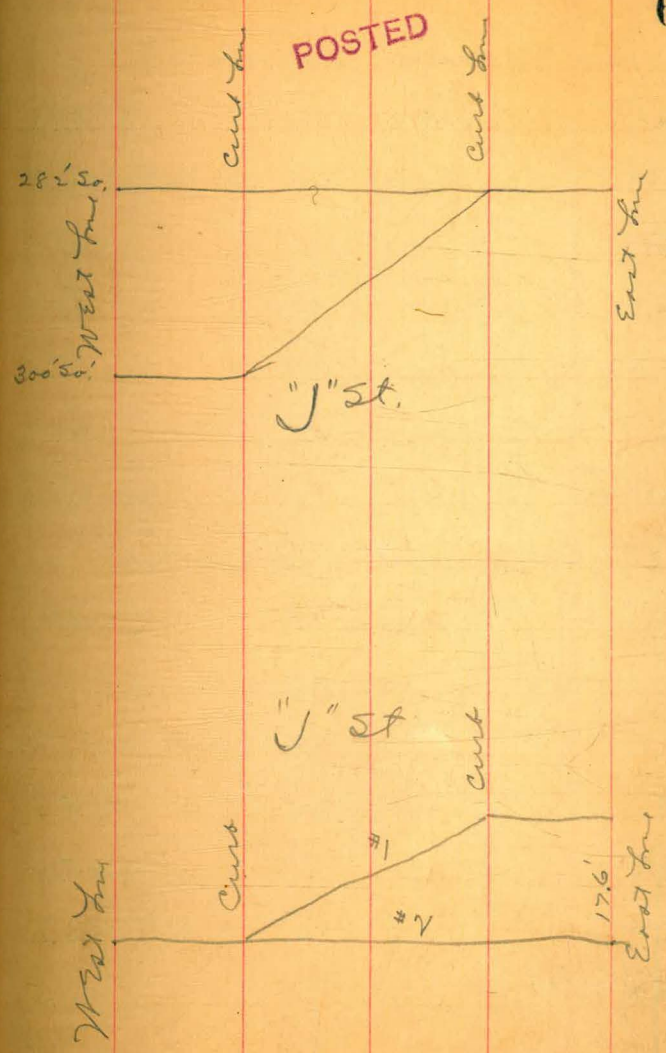
24 1/2

282' Soot I.

West End	10381	50	98.8
Ct.		52	98.6
Butter		50	98.2
1/4		53	98.5
Ct.		49	98.9
1/4		49	98.9
Ct.		45	98.3
East Line		2.8	100.0

300' Soot I.

East Ct.		45	99.3
1/4		51	98.7
Ct.		52	98.6
1/4		56	98.2
Curt		58	98.0
West Line		58	98.3





	So. Line of "J"	#1	
East L	103.81	6.8	97.0
-		7.0	96.8
1/4		7.6	96.2
Ct		8.0	95.8
1/4		8.1	95.7
Ct,		8.5	95.3
West Line		8.8	95.0

	So. Line of "J"	*2	
West L,		8.8	95.0
Ct		8.5	95.3
1/4		8.4	95.4
Ct.		8.5	95.3
1/4		8.3	95.5
Ct		7.8	96.0
5' West of East Line		9.3	94.5
East Line		9.5	94.3

25' So of "J" Measured on West Line			
East L	103.81	11.7	92.1
5' West of East Line		11.0	92.8
Curve		9.7	94.1
1/4		10.3	93.5
Ct.		10.5	93.3
1/4		10.4	93.4
Curve		11.1	92.7

7' East of West L.	12.4		91.4
West L.	18.2		90.6
2.6 ~ 93.53	12.90	90.91	

50' So of I.			
West L.		4.9	88.6
Curve		4.1	89.4
5' East of Ct.		3.0	90.5
1/4		2.4	91.1
Ct		2.7	90.8
1/4		2.1	91.4

Curb	93.53	2.0	91.5
5' East of Curb		3.2	90.3
East Lm		3.3	90.2
75' Soot V			
East L.		4.9	88.4
Cb.		5.5	88.0
1/4		5.6	87.9
Ct.		5.6	87.9
1/4		5.6	87.9
Cb.		6.5	87.0
West L.		6.4	87.1
100' Soot V			
East L.		8.1	85.4
-		8.5	85.0
1/4		7.5	86.0
Ct.		7.5	86.0
1/4		7.5	86.0

POSTED

62

Curb.	7.2	86.3
West Lm	6.8	86.7
125' Soot V		
West L.	6.4	87.1
-	7.8	85.7
1/4	8.5	85.0
Ct.	8.4	85.1
1/4	9.1	84.4
-	9.2	84.3
East Lm	9.4	84.1
150' Soot		
East L.	10.3	83.2
-	9.9	83.6
4' West of Curb	8.9	84.6
1/4	8.9	84.6
Ct.	9.0	84.5
1/4	9.0	84.5



Curt Line	93.53	8.4	85.1
WEST L.		7.4	86.1
111	87.69	6.95	86.58
175' East J			
WEST Line		1.5	86.2
-		3.2	84.5
114		3.4	84.3
ct		3.5	84.2
114		3.8	83.9
4' West of Curt		4.0	83.7
ct.		5.5	82.2
East Line		5.1	82.6

So  
200' West of

East Line	87.69	5.7	82.00
ct.		5.5	82.2
4' West of ct		4.4	83.3
1/4		4.0	83.7
ct.		4.0	83.7
1/4		3.5	84.2
ct.		3.4	84.3
West Line		2.5	85.2

225' East

WEST L.		3.1	84.6
-		3.6	84.1
1/4		4.7	83.5
ct		4.4	83.3
1/4		4.9	82.8
4' West of ct.		5.1	82.6
Curt		6.4	81.3
East Line		6.6	81.1

24<sup>th</sup> ST

250' Soot			
East Line	87.69	7.2	80.5
Curb		7.3	83.4
5' West of Cb.		5.7	81.8
1/4		5.5	82.2
Ct.		5.0	82.7
1/4		4.7	83.0
-		4.7	83.0
West Line		4.2	83.5
275' Soot			
West Line		5.8	81.9
-		6.1	81.6
1/4		6.0	81.7
Ct.		6.2	81.3
1/4		7.0	80.7
5' West of Cb.		7.8	79.9
Cb.		7.8	79.9
East Line		7.7	80.0

64

283' Soot ✓ POSTED			
East L.		8.9	79.7
-		8.0	79.7
Butter		9.3	78.4
5' West of Curb		8.6	79.1
1/4		8.0	79.7
Ct.		6.6	81.1
1/4		6.4	81.3
Ct.		6.8	80.9
West Line		6.3	81.4
300' Soot ✓			
West Line		6.4	81.3
Curb		7.0	80.7
1/4		6.9	80.6
Ct.		7.1	80.6
1/4		8.2	79.5
5' West of Cb.		8.5	79.2
Butter		9.3	78.4
East Curb		8.0	79.7



2000  
2000  
2000

cut

15  
H

cut

cut

POSTED

8769  
- 20  
-----  
8049

X. sect. for bridge on  
Juniper over water pipe line

		Elev.						66
								Elev.
	HT. 212.67						↓ 193' West 4 <sup>th</sup>	
	↓ West line 4 <sup>th</sup>							
C juniper	1.0	211.7	20' do.			9.8		202.9
10' do.	1.3	211.4	10' do.			8.5		204.2
20' do.	0.9	211.8	C			7.9		204.8
			J.P.	0.21	HI. 200.21	12.67	200.00	
	↓ 13' W. 4 <sup>th</sup>					↓ 151' W		
20' do.	9.8	202.9	C			2.5		197.7
10' do.	11.6	201.1	10' do.			4.2		196.0
C	8.0	204.7	20' do.			3.9		196.3
J.P.	<del>12.50</del> 200.17					↓ 169' W		
	↓ 5' West of East line 3 <sup>rd</sup>							
20' do.	5.5	207.2	20' do.			8.8		191.4
10' do.	4.1	208.6	10' do.			8.6		191.6
C	3.9	208.8	C			8.1		191.7
						↓ 25' W		
	↓ East line 3 <sup>rd</sup>							
C	4.9	207.8	20' do.			6.2		194.0
10' do.	5.3	207.4	10' do.			6.9		193.3
20' do.	6.7	206.0	C			3.5		196.7



500.21

37' W

		Elv.
c	10.8	189.4
10' So.	13.1	187.1
20' So.	13.3	186.9
J.P.	0.17	
	M.I.	
	187.72	12.66
		187.66
	↓ 49' West 4 <sup>th</sup>	
20' So.	8.3	179.4
10' So.	8.3	179.4
c	5.5	182.2
	↓ 61' W	
c	8.3	179.4
10' So.	10.7	177.0
20' So.	11.3	176.4
	↓ 73' W	
20' So.	12.9	174.8
10' So.	11.5	176.2
c	8.9	178.8

187.72

67

85' W

POST

		Elv.
c	10.5	177.2
10' So.	11.9	175.8
20' So.	13.5	174.2
	↓ 97' W	
20' So.	13.2	174.5
10' So.	12.9	174.8
c	11.3	176.4
	↓ 109' W	
c	12.7	175.0
10' So.	12.9	174.8
20' So.	13.0	174.7
	↓ 121' W	
20' So.	11.3	176.4
17' So.	12.0	175.7
10' So.	12.0	175.7
c	11.9	175.8

187.72

68

133' W

		Elev.
c	11.0	176.7
10' So.	11.0	176.7
20' So.	8.2	179.5

145' W

20' So.	5.2	182.5
10' So.	5.0	182.7
c	6.5	181.2

157' W

c	2.5	185.2
10' So.	2.2	185.5
20' So.	1.7	186.0

BM. bolt in stump	5.71	182.01
-------------------	------	--------



X Sect. Intersection Spruce

J.P. POSTED

H.L.  
242.91 12.74 230.17

J.P. 0.06 H.L.  
230.23

So. line Spruce

w line Brant 6.4 224.8

8.3 221.9

w 1/4 12.3 217.9

So. cb

w 1/4 15.2 215.0

11.5 218.7

w line 7.5 222.7

So 1/4

w line 8.8 221.4

cb 13.9 216.3

center

w line 9.2 221.0

1/4

w line 9.0

12.7

9.8

Brant

Sept. 20 1907

230.23

11/4

Childs  
Evans  
Barb 69

w line

9.0 221.2

12.7 217.5

10.6 219.6

12.2 218.0

11.06

w line

7.5 222.7

7.3 222.9

7.1 223.1

8.6 221.6

11.2 219.0

12.7 217.5

w line

15.1 215.1

230,23

White Spruce

E line	9.1	221.1
	6.5	223.7
	5.4	224.8
c	4.2	226.0
	3.8	226.4
	2.5	227.7
w line	3.1	227.1

J.P.	0.44	H.I. 218.05	12.62	217.61
------	------	-------------	-------	--------

White Spruce

E 1/4	4.1	214.0
	7.4	210.7
E line	9.5	208.6

Center

E.cb	11.4	206.7
	9.5	208.6
c	7.0	211.1
	6.2	211.9
w.cb.	4.0	214.1

230,23

219.05

70

So. 1/4

w 1/4	8.2	209.9
c	13.1	205.0
So.cb.		
c	8.0	210.1
E 1/4	12.1	206.0

So line

c	3.0	215.1
	6.6	211.5
E.cb	13.0	205.1

J.P.	0.24	H.I. 217.71	12.76	217.47
		205.43		

Center

E line	4.4	201.0
--------	-----	-------

So. 1/4

E line	13.0	202.4
cb	10.0	195.4
E 1/4	6.0	199.4



Σ17.71

20543

So. cb

E. cb

10.6

1948

E line

**POSTED**

14.1

1913

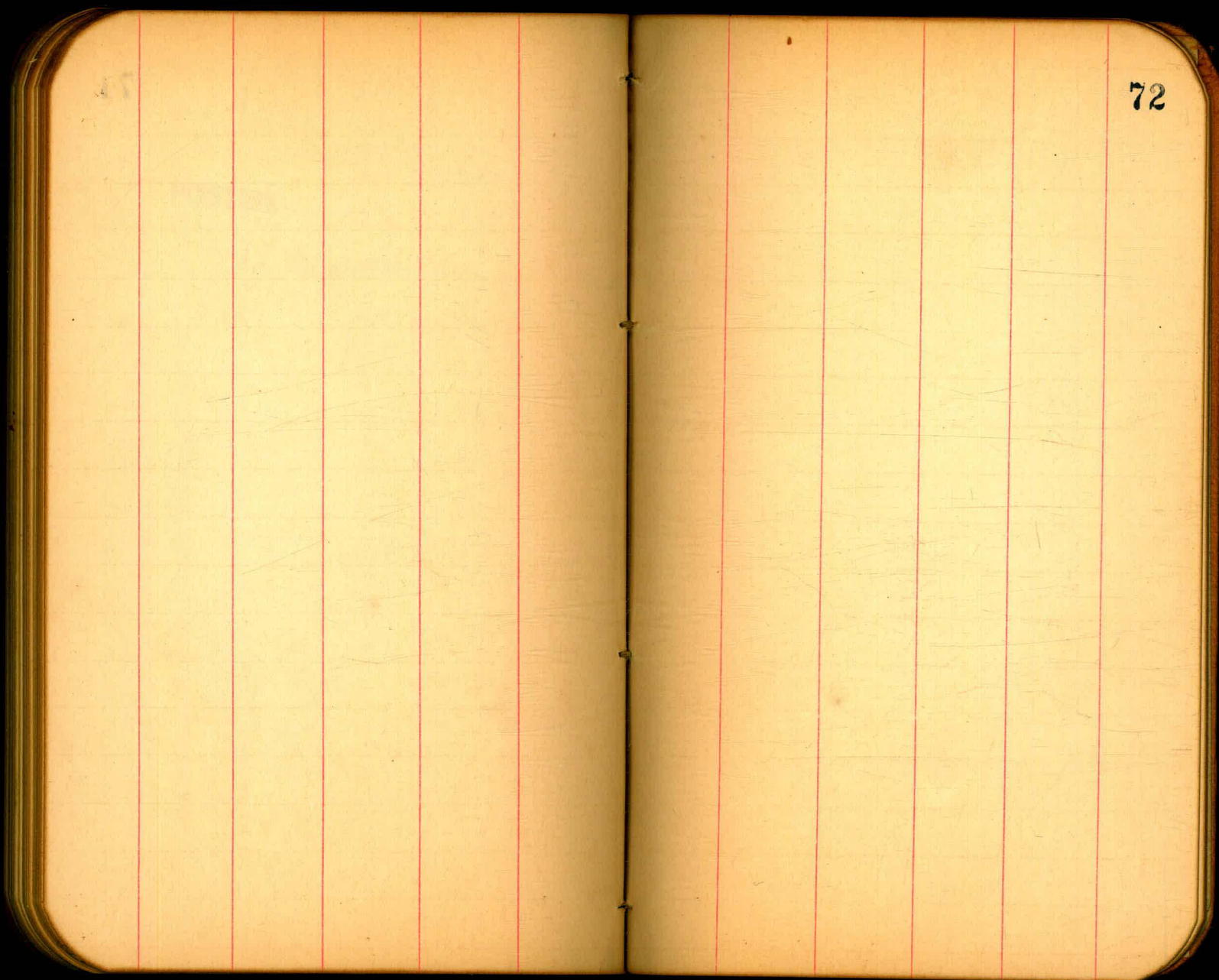
So. line Spruce

E line

6.4

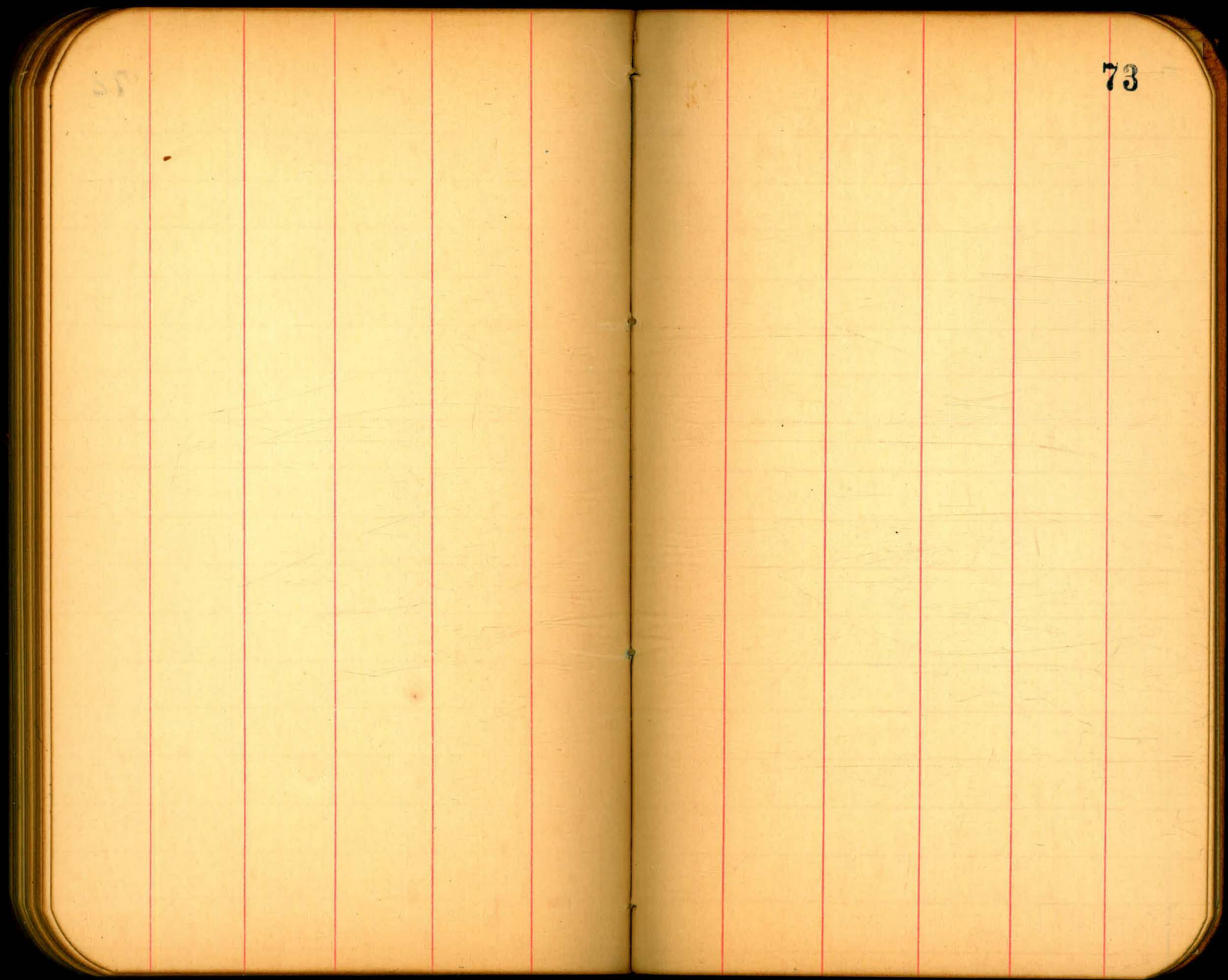
1990

71



72

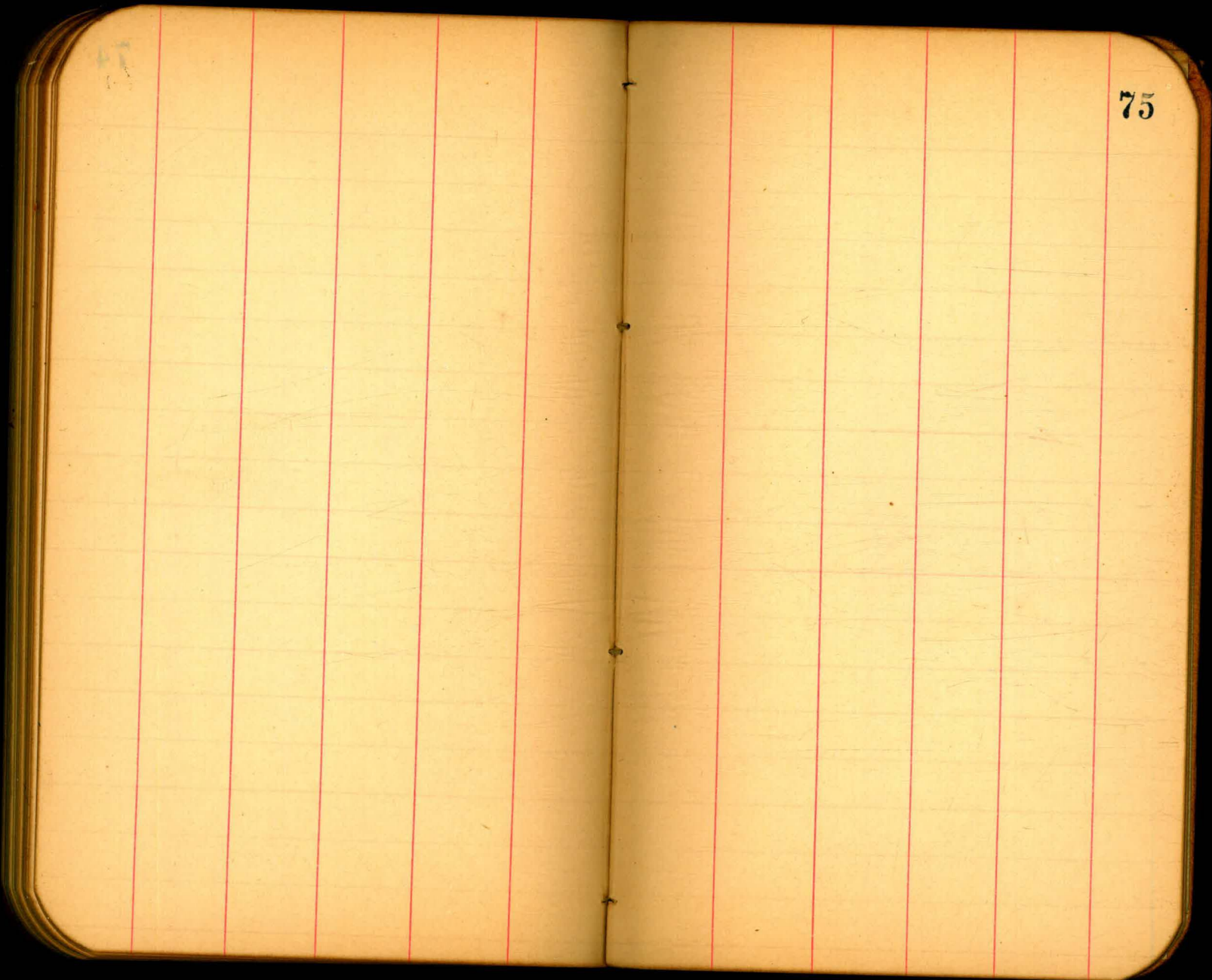




73

74



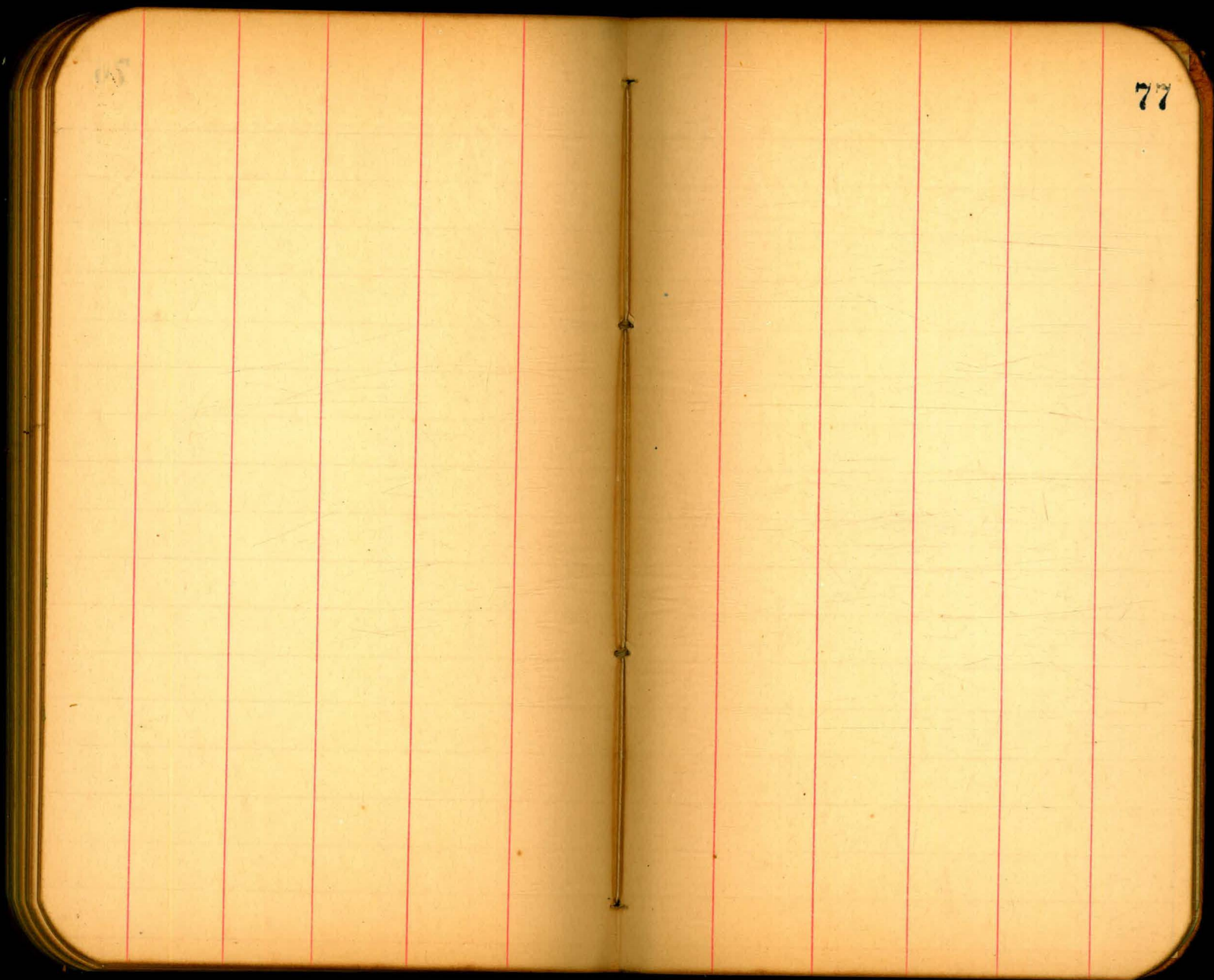


75

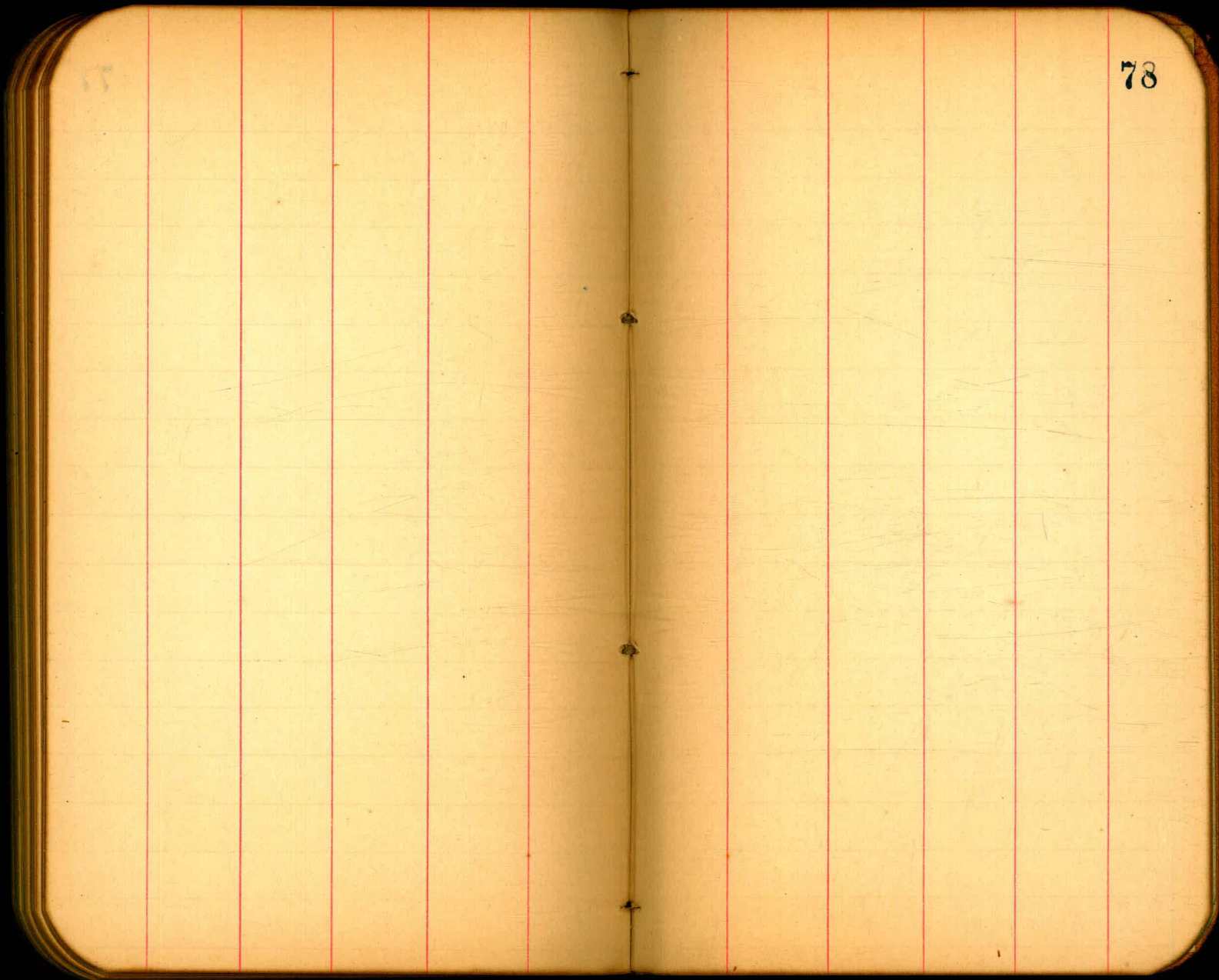
75

76



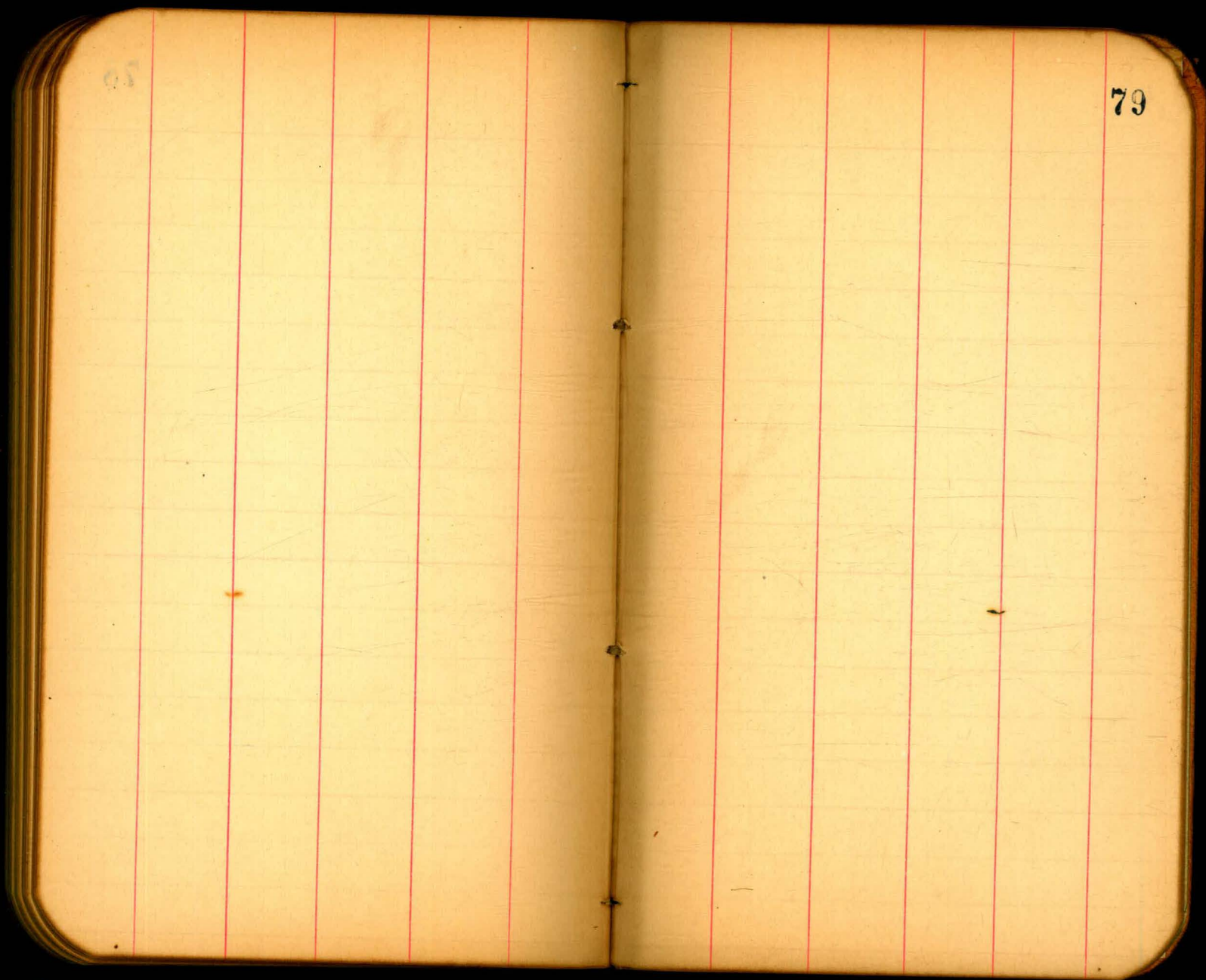


77



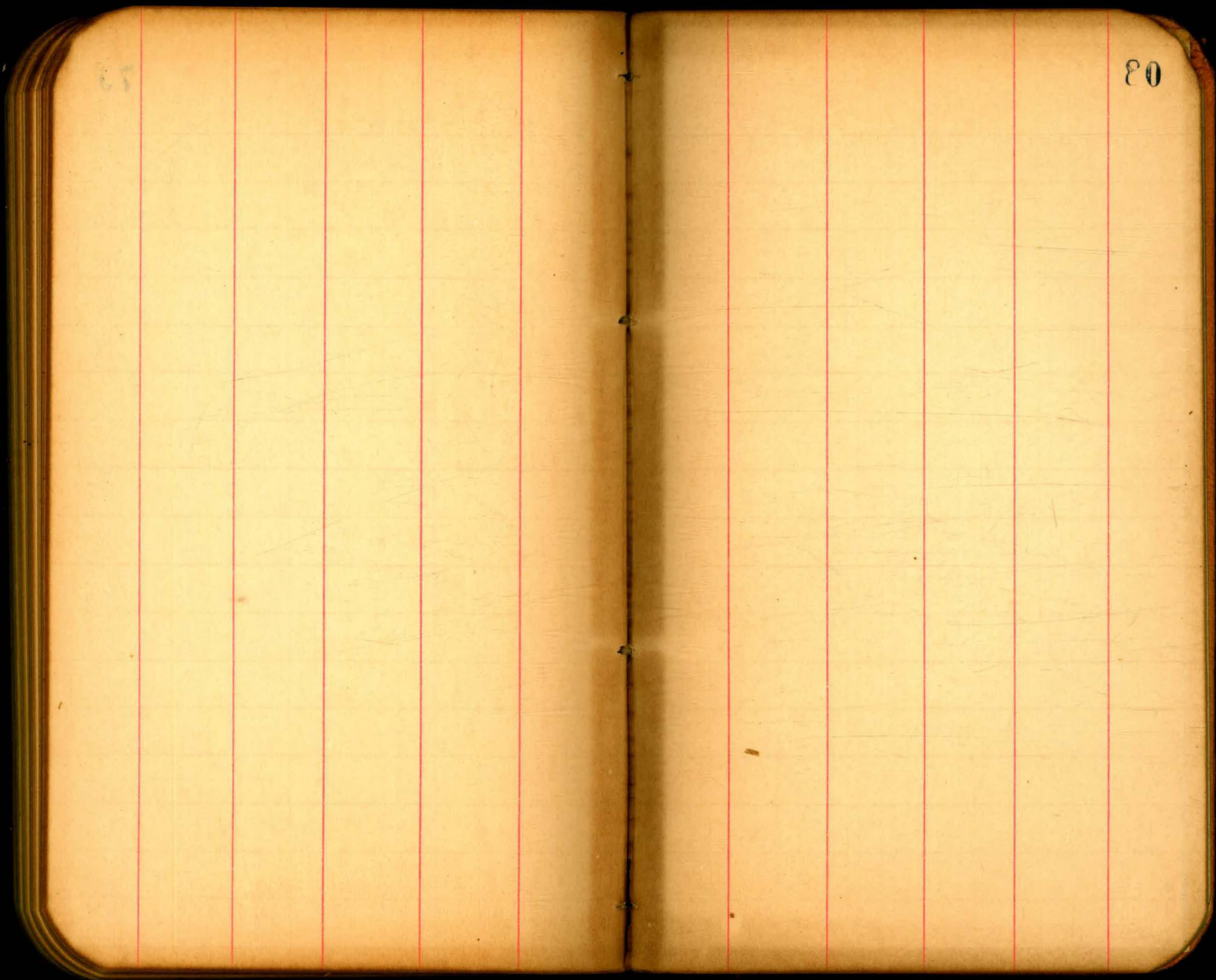
78





68

79



27

28



320  
433

60.52  
47 242  
60.52  
49  
67.91

68.96  
44  
69.45

61.02  
2.22  
48.80  
61.02  
13.26  
10.95  
61.02

17  
12  
34  
17  
204

47.20  
5.19  
52.74  
2.85  
47.89

Return to City Engineers Office  
City Hall, San Diego, Cal.

1' North of North Line C. 13.0

Return to City Engineers Office  
TRAVERSE TABLE FOR TRANSIT BOOK.  
City Hall, San Diego, Cal.  
From 1° to 90° for a distance of 100.

Degrees.	DEGREES.		¼ DEGREE.		½ DEGREE.		¾ DEGREE.		Degrees.
	Lat.	Dep.	Lat.	Dep.	Lat.	Dep.	Lat.	Dep.	
0			100.00	0.44	100.00	0.87	99.99	1.31	89
1	99.98	1.75	99.98	2.18	99.97	2.62	99.95	3.05	88
2	99.94	3.49	99.92	3.93	99.91	4.36	99.88	4.80	87
3	99.86	5.23	99.84	5.67	99.81	6.10	99.79	6.54	86
4	99.76	6.98	99.73	7.41	99.69	7.85	99.66	8.28	85
5	99.62	8.72	99.58	9.15	99.54	9.58	99.50	10.02	84
6	99.45	10.45	99.41	10.89	99.36	11.32	99.31	11.75	83
7	99.25	12.19	99.20	12.62	99.14	13.05	99.09	13.49	82
8	99.03	13.92	98.97	14.35	98.90	14.78	98.84	15.21	81
9	98.77	15.64	98.70	16.07	98.63	16.50	98.56	16.93	80
10	98.48	17.36	98.40	17.79	98.33	18.22	98.25	18.65	79
11	98.16	19.08	98.08	19.51	97.99	19.94	97.90	20.36	78
12	97.81	20.79	97.72	21.22	97.63	21.64	97.53	22.07	77
13	97.44	22.50	97.34	22.92	97.24	23.34	97.13	23.77	76
14	97.03	24.19	96.92	24.62	96.81	25.04	96.70	25.46	75
15	96.59	25.88	96.48	26.30	96.36	26.72	96.25	27.14	74
16	96.13	27.56	96.00	27.88	95.88	28.40	95.76	28.82	73
17	95.63	29.24	95.50	29.65	95.37	30.07	95.24	30.49	72
18	95.11	30.90	94.97	31.32	94.83	31.73	94.69	32.14	71
19	94.55	32.56	94.41	32.87	94.26	33.38	94.12	33.79	70
20	93.97	34.20	93.82	34.61	93.67	35.02	93.51	35.43	69
21	93.36	35.84	93.20	36.24	93.04	36.65	92.88	37.06	68
22	92.72	37.46	92.55	37.86	92.39	38.27	92.22	38.67	67
23	92.05	39.07	91.88	39.47	91.71	39.87	91.53	40.27	66
24	91.35	40.67	91.18	41.07	91.00	41.47	90.81	41.87	65
25	90.63	42.26	90.45	42.66	90.26	43.05	90.07	43.44	64
26	89.88	43.84	89.69	44.22	89.49	44.62	89.30	45.01	63
27	89.10	45.40	88.90	45.79	88.70	46.17	88.50	46.56	62
28	88.29	46.95	88.09	47.33	87.88	47.72	87.67	48.10	61
29	87.46	48.48	87.25	48.86	87.04	49.24	86.82	49.62	60
30	86.60	50.00	86.38	50.38	86.16	50.75	85.94	51.13	59
31	85.72	51.50	85.49	51.88	85.26	52.25	85.04	52.62	58
32	84.80	52.99	84.57	53.36	84.34	53.73	84.10	54.10	57
33	83.87	54.46	83.63	54.82	83.39	55.19	83.15	55.56	56
34	82.90	55.92	82.66	56.28	82.41	56.64	82.16	57.00	55
35	81.92	57.36	81.66	57.71	81.41	58.07	81.16	58.42	54
36	80.90	58.78	80.64	59.13	80.39	59.48	80.13	59.83	53
37	79.86	60.18	79.60	60.53	79.34	60.88	79.07	61.22	52
38	78.80	61.57	78.53	61.91	78.26	62.25	77.99	62.59	51
39	77.71	62.93	77.44	63.27	77.16	63.61	76.88	63.94	50
40	76.60	64.28	76.32	64.61	76.04	64.94	75.76	65.28	49
41	75.47	65.61	75.18	65.93	74.90	66.26	74.61	66.59	48
42	74.31	66.91	74.02	67.24	73.73	67.56	73.43	67.88	47
43	73.14	68.20	72.84	68.52	72.54	68.84	72.24	69.15	46
44	71.93	69.47	71.63	69.78	71.33	70.09	71.02	70.40	45
45	70.71	70.71							
Degrees.	Dep.	Lat.	Dep.	Lat.	Dep.	Lat.	Dep.	Lat.	Degrees.
	DEGREES.		¼ DEGREE.		½ DEGREE.		¾ DEGREE.		

Published by H. S. CROCKER COMPANY, Stationers, Drawing Materials, Mathematical Instruments, etc., San Francisco.