

400
LEVEL

F.B. 289

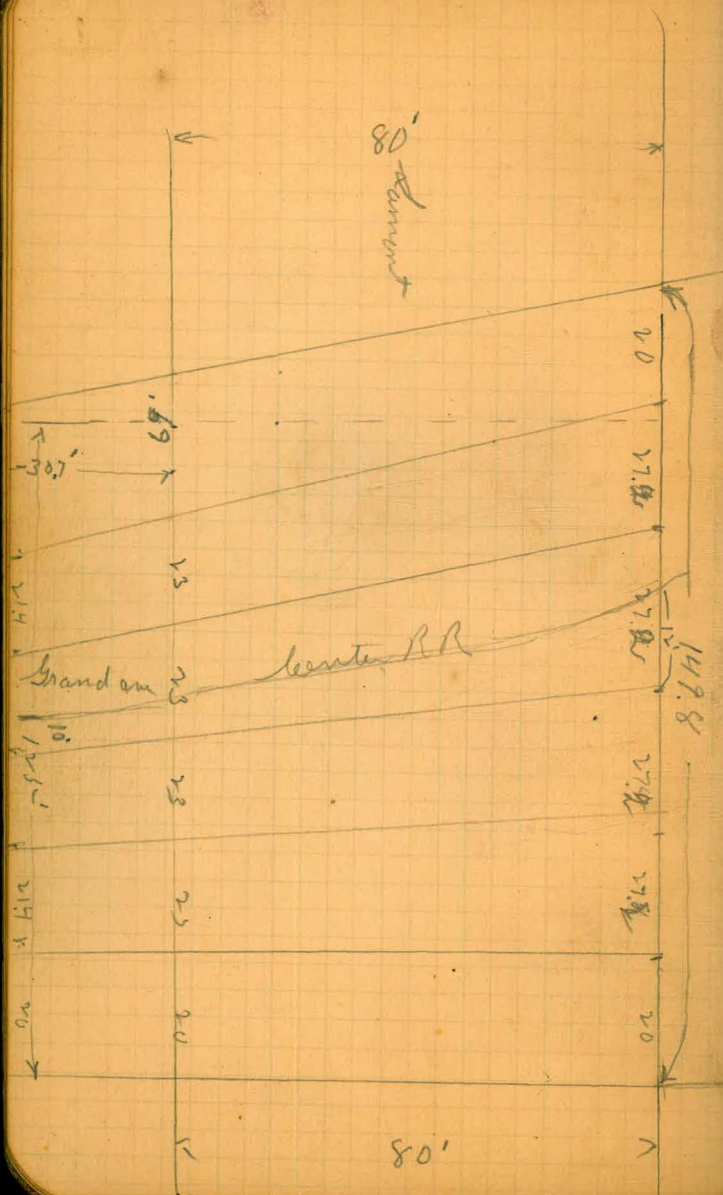
Table showing the difference of latitude and departure in running 80 chains at any course from 1 to 60 minutes.

MINUTES	LKS.	MINUTES	LKS.	MINUTES	LKS.
1.....	2 $\frac{1}{3}$	21.....	49	41.....	95 $\frac{2}{3}$
2.....	4 $\frac{2}{3}$	22.....	51 $\frac{1}{3}$	42.....	98
3.....	7	23.....	53 $\frac{2}{3}$	43.....	100 $\frac{1}{3}$
4.....	9 $\frac{1}{3}$	24.....	56	44.....	102 $\frac{2}{3}$
5.....	11 $\frac{2}{3}$	25.....	58 $\frac{1}{3}$	45.....	105
6.....	14	26.....	60 $\frac{2}{3}$	46.....	107 $\frac{1}{3}$
7.....	16 $\frac{2}{3}$	27.....	63	47.....	109 $\frac{2}{3}$
8.....	18 $\frac{1}{3}$	28.....	65 $\frac{1}{3}$	48.....	112
9.....	21	29.....	67 $\frac{2}{3}$	49.....	114 $\frac{1}{3}$
10.....	23 $\frac{1}{3}$	30.....	70	50.....	116 $\frac{2}{3}$
11.....	25 $\frac{2}{3}$	31.....	72 $\frac{1}{3}$	51.....	119
12.....	28	32.....	74 $\frac{2}{3}$	52.....	121 $\frac{1}{3}$
13.....	30 $\frac{1}{3}$	33.....	77	53.....	123 $\frac{2}{3}$
14.....	32 $\frac{2}{3}$	34.....	79 $\frac{1}{3}$	54.....	126
15.....	35	35.....	81 $\frac{2}{3}$	55.....	128 $\frac{1}{3}$
16.....	37 $\frac{1}{3}$	36.....	84	56.....	130 $\frac{2}{3}$
17.....	39 $\frac{2}{3}$	37.....	86 $\frac{1}{3}$	57.....	133
18.....	42	38.....	88 $\frac{2}{3}$	58.....	135 $\frac{1}{3}$
19.....	44 $\frac{1}{3}$	39.....	91	59.....	137 $\frac{2}{3}$
20.....	46 $\frac{2}{3}$	40.....	93 $\frac{1}{3}$	60.....	140

TABLE FOR RUNNING ON SLOPES.

In the following table the first column shows the angle, the second the number of links to be added to a chain on the slopes, to make one chain, horizontal measurement.

Angle	Cor. in Links	Angle	Cor. in Links	Angle	Cor. in Links	Angle	Cor. in Links
°		°		°		°	
4	0.24	11	1.88	18	5.14	25	10.54
5	0.38	12	2.24	19	5.76	26	11.26
6	0.55	13	2.63	20	6.42	27	12.24
7	0.76	14	3.06	21	7.11	28	13.37
8	0.98	15	3.53	22	7.85	29	14.34
9	1.24	16	4.02	23	8.64	30	15.47
10	1.55	17	4.56	24	9.47	35	22.07



Levels for Benchmarks at
Pacific Beach **POSTED** **i**

Bm	012	7290		7278	Bm 2 W Lament Barn
TP	162	6657	794	6493	
Bm	351	6435	571	6084	Stop NW Lament & Hawthorn
Bm	350	5631	1134	5281	Spire Pole Lament & Barn
Bm	^{marked with 5 days in of Sept}		433	5198	Spire W end of Fence
TP	417	5634	414	5217	
Bm			344	5290	W end of cave & stop N.E. corner Fence & Ground Pillar
Bm			333	5301	Spire in large tree 150 W of Fence on N side Barn
TP	1159	6735	0.60	5574	
TP	524	7279	025	6768	
			504	6778	

POSTED

cross-section of Grand Ave
E & Lamont to Wd 1/2nd

5-33-4

2

Intersection of Grand & Lamont

Ed

37 49.9

073 5384

5281

Bm 5m
State Grand
& Lamont

bh

31 50.5

(20' curb) Profile of Grand Ave (1259)

This intersection has been fully graded

E & Lamont

21

51.5

1/4

35 50.1

bh

13

52.3

1/4

29 50.7

1/4

16

52.0

bh

33 50.3

b

13

52.3

Wd

34 50.2

1/4

09

52.7

2' 1/2 of RR Road

bh

14

52.2

Wd

36 50.0

Wd

26

51.0

bh

36 50.0

N 1/2 of Grand Ave 1259

1/4

41 49.5

Wd

29

50.7

b

43 49.3

bh

23

51.3

1/4

45 49.1

1/4

19

51.7

bh

48 49.1

b

24

51.2

Ed

47 48.9

1/4

28

50.8

bh

28

50.8

Ed

22

51.4

5354

2' S of RR main

Ed	4.6	49.0
bb	4.2	49.4
1/4	4.2	49.4
b	3.6	50.0
1/4	3.3	50.3
bb	3.4	50.2
Wd	3.6	50.0

center of Grand am

Wd	4.0	49.6
bb	4.1	49.5
1/4	3.4	50.2
b	3.9	49.7
1/4	4.0	49.6
bb	3.8	49.8
Ed	4.2	49.4

5354

S 1/4 of Grand am

3

Ed	5.4	48.2
bb	5.0	48.6
1/4	5.1	48.5
b	4.9	48.7
1/4	4.9	48.7
bb	5.1	48.5
Wd	4.7	48.9

S bb of Grand am

Wd	5.0	48.6
bb	5.2	48.4
1/4	6.0	47.6
b	6.0	47.6
1/4	6.6	47.0
bb	7.0	46.6
Ed	7.3	46.3

5-354

S. of Grand am

Ed	79	45.6
bb	82	45.3
1/4	73	46.2
b	68	46.7
1/4	70	46.5
bb	71	46.4
WL	59	47.6

columns
 cross-section of Grand am (14)
 W. of damment to W. of Grand

	285	55.66	52.81	Bm
	30.7' W of damment are			
nd		46	51.9	
bb		50	50.7	
1/4		53	50.4	
+ 8' = 31.5' pair		56	50.1	
2'S Pair		55	50.2	
b		59	49.8	
1/4		64	49.3	
bb		70	48.7	
SL		70	48.7	
	50' W of damment			
SL		60	49.7	
bb		65	49.2	
1/4		59	49.8	
b		57	50.0	
+ 25' = 25' pair		54	50.3	

5366

2' n Rail	55	50.2
1/4	55	50.2
bb	50	50.7
rd	41	51.6

100' W of Summit

rd	36	52.1
bb	46	51.1
1/4	46	51.1
+14 = 2' n Rail	51	50.6
2' S Rail	48	50.9
l	52	50.5
1/4	54	50.3
bb	60	49.7
+15	53	50.4
SD	35	52.2

5

150' W of Summit St

SD	40	51.7
+5	54	50.3
bb	54	50.3
1/4	50	50.7
6 = 2' S Rail	46	51.1
2' n Rail	48	50.9
1/4	45	51.2
bb	44	51.3
rd	34	52.3

200' W of Summit St

rd	35	52.2
bb	45	51.2
1/4	44	51.3
2' 2 Rail	46	51.1
2' S Rail	46	51.1
+10	57	50.0
1/4	46	51.1

53-66

bb		4.7	51.0
SL		4.5	51.2
	250' W Summit		
SL		4.3	51.4
bb		4.7	51.0
1/4		4.4	51.3
+8		6.2	49.5
2'S Peak		4.4	51.3
2'N Peak		4.6	51.1
1/4		4.3	51.4
SL		4.6	51.1
TP	386	53.81	3.71 51.95
	300' W Summit		
SL		3.8	52.0
bb		4.7	51.1
+2		5.6	50.2
1/4		4.6	51.2

53-81

6

2'N Peak		4.2	51.2
2'S Peak		4.5	51.3
+4		5.9	49.9
1/4		4.5	51.3
bb		4.6	51.2
SL		4.6	51.2
	350' W Summit		
SL		5.7	50.6
bb		5.3	50.5
1/4		4.8	51.0
2'S Peak		5.0	50.8
2'N Peak		4.6	51.2
1/4		4.5	51.3
+20		5.8	50.0
bb		4.8	51.0
SL		4.3	51.5

5581

400' W Lament

Rd	4,3	51.5
bb	5,1	50.7
1/4	4,9	50.9
1/2 Rail	4,6	51.2
2/5 Rail	4,6	51.2
1/4	5,1	50.7
bb	5,3	50.5
Sd	5,3	50.5

450' W Lament St

Sd	5,2	50.6
bb	5,5	50.3
1/4	5,0	50.8
2/5 Rail	4,6	51.2
1/2 Rail	4,8	51.0
1/4	4,9	50.9
bb	5,6	50.2
Sd	5,2	50.6

5581

500' W Lament St = Ed Kendall

Rd	6,3	49.5
bb	5,2	50.2
1/4	4,9	50.9
1/2 Rail	4,6	51.2
2/5 Rail	4,6	51.2
1/4	5,0	50.8
bb	5,7	50.1
Sd	5,3	50.5

298 3-4-96 383 ✓ 51.98 Bm

(20) bb Ed of Kendall St (80)

Sd	4,6	50.4
bb	4,6	50.4
1/4	4,2	50.8
2/5 Rail	5,7	51.3
1/2 Rail	5,7	51.3
1/4	4,4	50.6
bb	4,8	50.2
Rd	6,1	48.9

5-496

E 1/4 Kendall st

Ed	5.9	49.1
Ch	4.8	50.2
1/4	4.0	51.0
v's Rail	3.8	51.2
v's Rail	3.7	51.3
1/4	4.1	50.9
Ch	4.8	50.2
SL	4.2	50.8

Center Kendall st

SL	4.1	50.9
Ch	4.9	50.1
1/4	4.6	50.4
v's Rail	3.8	51.2
v's Rail	3.9	51.1
1/4	4.1	50.9
Ch	3.0	50.0
SL	5.8	49.2

5-496

W 1/4 Kendall st

Ed	6.0	49.0
Ch	5.0	50.0
1/4	4.0	51.0
v's Rail	3.8	51.2
v's Rail	3.9	51.1
1/4	4.1	50.9
Ch	4.9	50.1
SL	4.4	50.6

W 1/4 of Kendall

SL	4.4	50.6
Ch	4.8	50.2
1/4	4.2	50.8
v's Rail	3.7	51.3
v's Rail	3.8	51.2
1/4	4.1	50.9
Ch	5.0	50.0
SL	6.3	48.7

8

5496

W side of Kendall

Rd	6.1	48.9
bb	4.9	50.1
1/4	4.0	51.0
2' N Rail	3.6	51.4
2' S Rail	3.7	51.3
1/4	4.2	50.8
bb	4.8	50.2
S.L.	4.6	50.4

3.90

5588

51.98

Bm

30' W of Kendall St (80)

Rd	7.0	48.9
bb	5.6	50.3
1/4	4.7	51.2
2' N Rail	4.7	51.2
2' S Rail	4.8	51.1
1/4	5.1	50.8
bb	6.0	49.9
+16	6.0	49.9
S.L.	6.7	49.2

100' W of Kendall St

S.L.	7.2	48.7
bb	5.9	50.0
1/4	5.0	50.9
2' S Rail	4.6	51.3
2' N Rail	4.7	51.2
1/4	4.6	51.3
bb	5.3	50.6
bb	6.1	49.5
Rd	6.6	49.3

9

5-5-58

Ground

150' W of Kendall

Rid	6.7	49.2
bb	5.3	50.6
1/4	4.4	51.5
2 1/2 Rail	4.6	51.3
2 1/2 Rail	4.6	51.3
1/4	5.0	50.9
bb	5.6	50.3
+1/2	6.0	49.9
S.L.	7.2	48.7

200' W of Kendall

S.L.	7.0	48.9
+1/2	5.5	50.4
bb	5.5	50.4
1/4	5.2	50.7
2 1/2 Rail	4.6	51.3
2 1/2 Rail	4.5	51.4
1/4	4.4	51.5
bb	5.0	50.9
Rid	6.2	49.7

TP 380 5602 3.66 5222

250' W of Kendall

Rid	5.8	50.2
bb	5.3	50.7
1/4	4.8	51.2
2 1/2 Rail	4.7	51.3
2 1/2 Rail	4.8	51.2
1/4	5.1	50.9
bb	5.8	50.2
+1/2	6.0	50.0
S.L.	7.2	48.8

300' W of Kendall

S.L.	8.0	48.0
+1/2	6.3	49.7
bb	6.0	50.0
1/4	5.2	50.8
2 1/2 Rail	4.8	51.2
2 1/2 Rail	4.7	51.3
1/4	4.6	51.4
bb	5.2	50.8
Rid	5.3	50.5

10

350' W of Kendall

Rd	5.0	51.0
	4.8	51.2
1/4	4.6	51.4
v'n Riv	4.7	51.3
v'S Riv	4.9	51.1
1/4	5.2	50.8
bb	5.7	50.3
+15-	6.2	49.8
S2	8.3	47.7
+15		

400' W of Kendall

S2	8.1	47.9
+15-	5.9	50.1
bb	5.9	50.1
1/4	4.9	51.1
v'S Riv	4.9	51.1
v'n Riv	4.8	51.2
1/4	4.4	51.6
bb	4.6	51.4
Rd	4.4	51.6

450' W of Kendall

Rd	3.9	52.1
bb	4.6	51.4
1/4	4.5	51.5
v'n Riv	4.6	51.4
v'S Riv	4.8	51.2
1/4	5.0	51.0
bb	6.0	50.0
+15-	6.4	49.6
S2	7.6	48.4

500' W of Kendall = E of Tunnel at (80')

S2	7.2	48.8
bb	6.0	50.0
1/4	5.4	50.6
v'S Riv	4.7	51.3
v'n Riv	4.6	51.4
1/4	4.4	51.6
bb	4.1	51.9
Rd	3.8	52.2
	3.1	52.9

Bm 374 56.64 52.90 Bm

E 1/4 of Jewell

22	45	52.1
bl	50	51.6
1/4	50	51.6
2 1/2 Rail	52	51.4
2 1/2 Rail	53	51.3
1/4	59	50.7
bl	66	50.0
S2	74	49.2

E 1/4 Jewell

S2	74	49.2
bl	69	49.7
1/4	59	50.7
2 1/2 Rail	50	51.6
2 1/2 Rail	47	51.9
1/4	57	51.5
bl	52	51.4
22	46	52.0

5-664

Center of Jewell

22	46	52.0
bl	50	51.6
1/4	50	51.6
2 1/2 Rail	48	51.8
2 1/2 Rail	52	51.4
1/4	58	50.8
bl	68	49.8
S2	76	49.0

W 1/4 of Jewell

S2	72	49.4
bl	68	49.8
1/4	57	50.9
2 1/2 Rail	53	51.3
2 1/2 Rail	52	51.4
1/4	52	51.4
bl	51	51.5
22	44	52.2

5-664

Wbb of Fossil

2d	44	52.2
bb	50	51.6
1/4	52	51.4
2'n Pair	53	51.3
v's Pair	52	51.4
1/4	56	51.0
bb	66	50.0
SL	68	49.8

W2 of Fossil (80)

SL	72	49.4
bb	64	50.2
1/4	55	51.1
2's Pair	52	51.4
v'n Pair	52	51.4
1/4	50	51.6
bb	50	51.6
2d	40	52.6

5-664

50' W of Fossil

2d	35	53.1
bb	48	51.8
1/4	47	51.9
2'n Pair	50	51.6
v's Pair	50	51.6
1/4	54	51.2
bb	60	50.6
SL	70	49.6

100' W of Fossil

SL	64	50.2
bb	58	50.8
1/4	54	51.2
2's	47	51.9
2'n Pair	47	51.9
1/4	46	52.0
bb	47	51.9
2d	33	53.3

150' W of Jewel

rd	30	53.6
bb	45	52.1
1/4	45	52.1
2 n Rai	45	52.1
1.5	44	52.2
1/4	49	51.7
bb	55	51.1
S 2	60	50.6

X See next page
200' W of Jewel

S 2	56	51.0
bb	54	51.2
1/4	46	52.0
n S Rai	40	52.6
2 n	41	52.5
1/4	42	52.4
bb	44	52.2
S 2	30	53.6

250' W of Jewel

rd	28	53.8
bb	38	52.8
1/4	38	52.8
2 n Rai	37	52.9
1.5	37	52.9
1/4	40	52.6
bb	47	51.9
S 2	53	51.3

300' W of Jewel

S 2	50	51.6
bb	44	52.2
1/4	37	52.9
2 S 4 Rai	33	53.3
2 n	33	53.3
1/4	32	53.4
bb	32	53.4
rd	20	54.6

450' west of ground

2d	44	55.5
bl	51	54.8
1/4	52	54.7
2'S Rail	51	54.8
2'S	52	54.7
1/4	58	54.1
bl	65	53.4
Sd	76	52.0

500' west = E 1/4 Field (100)

Sd	70	52.9
bl	58	54.1
1/4	53	54.6
2'S Rail	46	55.3
2'm	47	55.2
1/4	47	55.2
bl	46	55.3
2d	40	55.9

E 1/4 Field

2d	38	56.1
bl	46	55.5
1/4	41	55.8
2'S Rail	44	55.5
2'S	44	55.5
1/4	52	54.7
bl	58	54.1
Sd	65	53.4

E 1/4 Field

Sd	56	54.3
bl	49	55.0
1/4	45	55.4
2'S Rail	38	56.1
2'm	36	56.3
1/4	40	55.9
bl	44	55.5
2d	39	56.0

Center Road

NL			
+2	2.8	57.1	
bl	4.0	55.9	
	3.8	56.1	
1/4	3.6	56.3	
+5			
+10	3.5	56.4	
	3.3	56.6	
i n Pair	4.0	55.9	
i S	3.8	56.1	
1/4	4.2	55.7	
bl	4.5	55.4	
S L	4.7	55.2	

W 1/4 of J Road

S L	5.0	54.9	
bl	4.6	55.3	
1/4	4.1	55.8	
i S Pair	3.6	56.3	
i m	3.8	56.1	
+8	5.2	54.7	
+12	3.1	56.8	
1/4	3.0	56.3	

bl

+18

K L

K L

bl

1/4

+5

+10

i n Pair

i S

1/4

bl

S L

W 1/2 of J Road

	3.8	56.1	
	3.7	56.8	
	2.9	57.0	
	2.6	57.3	
	3.3	56.6	
	3.0	56.9	
	2.7	57.2	
	5.0	54.0	
	3.6	56.3	
	3.6	56.3	
	4.1	55.8	
	4.5	55.4	
	4.9	55.0	

W 1/2 J Road

S L	3.3	56.6	
bl	3.9	56.0	
1/4	3.5	56.4	
i S	3.4	56.5	
i m	3.5	56.4	

POSTED

+ 7	57.1	54.8
+ 12	22	57.7
14	29	57.0
bl	26	57.3
nd	22	57.7

21.25
16.8
5.6
16.8
55.98 54.99
5.4

$\frac{8}{16.8} = 2 \overline{) 1.98}$
99

POSTED
Cross section of Grand Ave (125)
Pacific Beach
18
Izard west

Bm	478	62.35-	57.57	SW Cor Grand Ave
TP	246	58.48	63.8	56.02
Bm			15.2	56.96
TP	213	51.52	9.09	49.39
Bm			6.25	
TP	945-	60.82	0.15-	51.37
TP	408	62.28	2.22	58.10
Bm			4.61	57.57

25' W. of Izard
62.15

SL	460	57.6
bl	5-5	56.7
14	5-5	56.7
7.10	7.5-	54.7
25 Road	5-5	56.7
22 Road	5-6	56.6
6+10	6.7	55.5
6+15	3.8	58.4
44		
14	40	58.2
bl	44	57.8
+ 17	43	57.7
nd	3.0	59.2

6218

50' w of 2nd

rd	23	59.9
+3	36	58.6
bl	33	58.9
4	33	58.9
+3-	32	57.0
+7	67	55.5
2nd R	54	56.8
25 R	53	56.9
6+12	70	54.2
6+16	48	57.4
14	50	56.2
bl	57	57.1
SR	44	57.8

75' w of 2nd

SR	43	57.9
bl	43-	57.7
19	42	57.9
+7	42	58.0
+11	61	56.1
25 R	50	57.2
2nd R	50	57.2
6+13	58	56.4
4	21	60.1
	20	59.9
6	25-	59.7
+11	28	59.4
2nd	15-	60.7

6218

100' w of 2nd

rd	04	61.8
+3	20	60.2
14	20	60.2
+4	20	60.2
+5	51-	56.7
2nd R	48	57.4
25 R	48	57.4
6+10	61	55.1
6+15	51-	58.7
14	34	58.8
bl	42	58.0
SR	32	59.0

125' w of 2nd

SR	23	59.8
bl	31	59.1
14	30	59.2
+6	15	60.7
SR	47	57.5
2nd R	47	57.5
6+12	34	58.8
6+14	04	51.8

TP 388 65.34 0.75 61.46 64.6

19

65-37

1/4	43	61.1
bb	44	60.9
+16	42	61.1
SL	21	63.2

150' W of 72nd

nd	14	63.9
+4	34	61.9
bb	36	61.7
1/4	36	61.7
+5	34	61.9
11, +10	84	56.9
2nd R	78	57.5
2S R	79	57.4
b+10	87	56.6
b+16	50	60.3

113	50	60.3
bb	60	59.3
SL	48	60.5

65-34

20

175' W of 72nd

SL	40	61.3
bb	51	60.2
1/4	46	60.7
1/4 + 6'	42	60.7
11 + 15	91	56.2
2S R	80	57.3
2nd R	80	57.3
b+10	84	56.9
b+18	33	62.0
1/4	35	61.8
bb	33	62.0
+16	36	61.7
SL	14	63.9

200' W of 72nd

nd	12	64.1
+5	38	61.5
bb	35	61.8
1/4	33	62.0
+5	28	62.5
+12	80	57.3
2nd R	80	57.3
2S R	80	57.3
b+12	80	57.3
b+17	42	61.1
1/4	46	60.7
bb	45	60.8
SL	38	61.5

6534

	225' w of	Drum	
SL		38	61.5
hh		46	60.7
1/4		46	60.7
1/4 + 5		40	61.3
1/4 + 12		83	57.0
2SR		82	57.1
2mR		84	56.9
8 + 10		80	57.3
1/4		37	61.9
hh		38	61.5
+17		37	61.6
SL		06	64.7

	250' w of	Drum	
SL		12	64.1
+6		41	61.2
hh		40	61.3
1/4		40	61.3
2mR		84	56.9
2SR		84	56.9
8 + 8		70	58.3
8 + 15		36	61.7
1/4		49	60.4
hh		48	60.5
SL		38	61.5

6534

21

	275' w of	Drum	
SL		40	61.3
hh		50	60.3
1/4		48	60.5
1/4 + 5		44	60.9
1/4 + 10		96	55.7
2SR		87	56.6
2mR		86	56.7
8 + 14		80	57.3
1/4		41	61.2
hh		47	61.1
+17		48	60.5
SL		22	63.1

	300' w of	Drum	
SL		30	62.3
+3		52	60.1
hh		48	60.5
1/4		45	60.8
+5		85	56.8
8 + 10		102	55.1
2mR		88	56.5
2SR		89	56.4
8 + 10		106	54.7
1/4		45	60.8
hh		56	59.7
SL		44	60.9

325' W of Island

SR			43		61.0
bl			52		59.7
11y			55		59.8
TP	349	6338	545	5989	57.9
41+5'			33		60.1
116+10'			84		55.0
v's R			70		56.4
v's R			70		56.4
6+10			81		55.3
11y			29		60.5
bl			33		60.1
+18			55		59.9
h2			0.8		62.6

350' W of Island

h2			23		61.1
+6			39		59.5
bl			29		59.5
1y			24		60.0
+8'			81		55.3
2mR			75		55.9
v's R			74		56.0
6+10			72		56.2
11y			43		59.1
bl			40		59.4
SR			28		60.6

375' W of Island

SR					30	60.1
bl					46	58.8
11y					42	59.2
+10					90	54.4
2mR					77	55.7
2mR					77	55.7
6+12					90	54.4
11y					40	59.4
bl					43	59.1
h2					41	59.3

400' W of Island

h2					56	57.8
bl					53	58.1
11y					46	58.8
+10					88	54.6
2mR					79	55.5
v's R					77	55.7
6+10					85	54.9
11y					48	58.6
bl					48	58.6
SR					30	60.1

425' w of Drank

SL	4.5	58.9
bl	5.8	57.6
1/4	5.6	57.8
+3	5.5	57.9
1/4+10	9.4	53.0
2'SR	8.1	55.3
2'NR	8.0	55.4
6+10	9.4	54.0
1/4	5.2	58.2
bl	6.2	57.2
NR	6.4	57.0

450' w of Drank

NR	6.6	56.8
bl	6.5	56.9
1/4	6.0	57.4
+3	6.0	57.4
1/4+10	9.6	53.8
2'NR	8.3	55.1
2'SR	8.4	55.0
6+10	10.1	53.3
1/4	6.0	57.4
bl	6.9	56.5
SL	5.5	57.9

475' w of Drank

SL	6.6	56.8
bl	7.5	55.9
1/4	6.6	56.8
+10	8.6	54.8
2'SR	8.5	54.9
2'NR	8.7	54.7
6+10	8.8	54.6
1/4	6.5	56.9
bl	7.0	56.4
NR	7.3	56.1

E of Harvest

NR	7.0	56.4
bl	7.5	55.9
1/4	6.4	57.0
2'NR	8.9	54.5
2'SR	8.5	54.9
1/4	7.7	55.7
bl	7.7	55.7
SL	8.0	55.4
TP	145	52.1
5-845	6.38	56.96
57.00		57.00

5845

Ebt of Haines 11 (80')

SL	34	55.1
bl	33	55.2
4	33	55.2
2SR	37	54.8
2SR	38	54.7
4	32	55.3
bl	25	56.0
2L	17	56.8

E 1/4 Haines 11

2L	23	56.2
bl	29	55.6
4	38	54.7
2SR	38	54.7
2SR	38	54.7
1/4	36	54.9
bl	34	55.1
SL	36	54.9

5845

24

Center of Haines 11

SL	37	54.8
bl	38	54.7
1/4	34	55.1
2SR	46	53.9
2SR	45	54.0
1/4	27	56.1
bl	30	55.5
2L	21	56.4

W 1/4 of Haines 11

2L	20	56.5
bl	33	55.2
4	30	55.5
2SR	47	53.8
2SR	47	53.8
4	37	54.8
bl	40	54.5
SL	40	54.5

5845

W of Hains st

SR	4.8	53.7
bl	4.4	54.1
4	4.2	54.3
2SR	5.0	53.5
2NR	5.1	53.4
4	3.0	55.5
bl	3.6	54.9
NR	1.6	56.9

W of Hains st

NR	2.2	56.3
bl	4.0	54.5
4	3.2	55.3
2NR	5.3	53.2
2SR	5.3	53.0
4	4.1	54.4
bl	7.7	53.8
SR	4.9	53.6

5845

25

25' W of Hains st

SR	5.0	53.2
bl	5.3	53.2
4	4.8	53.7
4 ^{4.8}	4.8	53.7
4 ^{6.8}	6.8	51.7
2SR	5.8	52.7
2NR	5.7	52.8
4 ^{6.4}	6.4	52.7
4	4.2	54.3
bl	4.7	53.8
NR	1.9	56.6

50' W of Hains

NR	2.3	56.2
4	5.0	53.5
bl	5.0	53.5
4	4.7	53.8
4 ^{6.3}	6.3	52.2
2NR	6.2	52.3
2SR	6.3	52.2
6 ^{7.5}	7.5	51.0
6 ^{5.0}	5.0	53.5
4	5.1	53.4
bl	5.8	52.7
SR	5.8	52.7

58.45

75' W of Hains

SL	61	52.4
bl	67	51.8
ly	58	52.7
+10	55	53.0
10+10	81	50.4
2SR	67	51.8
2NR	67	51.8
6+10	66	51.9
6+10	68	53.7
ly	56	53.5
bl	58	52.7
+18	54	53.1
SL	50	55.5

100' W of Hains

SL	30	55.5
+5	63	52.2
bl	67	52.1
ly	55	53.0
+2	56	52.9
4+5	71	51.3
2NR	71	51.4
2SR	71	51.4
6+10	64	50.1
6+10	60	52.5
6/10	70	51.5
bl	71	51.3
SL	88	51.7

58.45

125' W of Hains

SL	67	51.8
bl	77	50.8
y	70	51.5
+6	65	52.4
+10	88	49.7
2SR	74	51.1
2NR	74	51.1
6+10	76	50.9
6+10	60	52.5
ly	66	51.9
bl	68	51.7
+11	68	51.7
SL	36	54.9

150' W of Hains

SL	42	54.3
+5	73	51.2
bl	74	51.1
ly	67	51.8
+5	67	51.8
2NR	78	50.3
2SR	79	50.7
6+10	79	50.6
6+10	83	49.2
6+10	70	51.5
ly	80	50.5
bl	80	50.5
SL	80	50.5

26

TP

215	5338	7.25	5116	46.1
175'	w of	Hains	21	SL
SL		34		50.0
bl		34		50.0
4		33		50.1
+10		25		50.9
14+14		46		48.8
2SR		33		50.1
2SR		32		50.2
6+12		40		49.4
14		24		51.0
bl		32		50.2
+17		28		51.6
22		0.0		53.4

200' w of Hains

22		09		52.5
75		35		49.9
bl		35		49.9
14		33		50.1
+5		27		50.7
14+10		40		49.4
2SR		36		49.8
2SR		36		49.8
6+10		47		48.7
4		34		50.0
bl		39		49.5
SL		42		49.2

5338

27

225' w of Hains

SL		51		48.3
bl		49		48.5
4		43		49.1
4+16		40		49.4
2SR		34		48.0
2SR		40		49.4
14		40		49.4
bl		41		49.3
77		37		49.7
22		20		51.4

250' w of Hains

22		29		51.5
75		46		48.8
bl		45		48.9
14		42		49.2
2SR		42		49.2
2SR		44		49.0
6+10		62		47.2
14		48		48.6
bl		55		47.9
SL		53		48.1

	275'	W of Hains St
SL	57	47.7
bl	58	47.6
4	54	48.0
7 1/2	64	47.0
2SR	48	48.6
2NR	46	48.8
114	50	48.4
bl	50	48.4
RL	41	49.3

	300'	W of Hains St
RL	50	48.4
bl	58	47.6
114	57	48.3
2NR	50	48.4
2SR	50	48.4
6+10	60	47.4
114	58	47.6
bl	60	47.4
SL	64	47.0

	325'	W of Hains St
SL	70	46.4
bl	67	46.7
114	62	47.2
2SR	55	47.9
2NR	54	48.0
114	58	47.6
bl	60	47.4
RL	60	47.4

	350'	W of Hains St
RL	67	47.0
bl	67	47.0
114	60	47.4
2NR	57	47.7
2SR	60	47.4
TP. 177	5017	494 4836
114	35	46.7
bl	38	46.4
SL	43	45.9

50.13

375' W of House

SR	4.8	45.4
bl	4.4	45.8
y	4.4	45.8
2SR	5.1	47.1
2NR	3.0	47.2
ly	3.5	46.7
bl	3.5	46.7
22	3.8	46.4

400' W of House

22	4.3	45.9
bl	3.8	46.4
y	3.4	46.8
2NR	3.3	46.9
2SR	3.4	46.8
y	4.2	46.0
bl	4.9	45.9
SR	4.9	45.9

50.13

425' W of House

SR	5.4	44.8
bl	5.0	44.9
y	4.9	45.3
2SR	3.6	46.6
2NR	3.7	46.5
ly	4.0	46.2
bl	4.4	46.2
22	4.7	45.5

450' W of House

22	5.0	45.2
y	4.7	45.5
2SR	4.5	45.7
2NR	4.1	46.1
2SR	4.2	46.0
ly	4.3	45.9
bl	5.0	45.2
SR	6.3	43.9

29

50⁷

4.75 W of Hams st

SL	6.3	43.9
bl	5.7	44.5
y	4.8	45.4
2SR	4.6	45.6
2RR	4.5	45.7
y	4.7	45.5
bl	4.9	45.3
2L	5.3	44.9

E of Gresham st

2L	5.6	44.6
bl	5.2	44.0
y	4.8	45.4
2RR	4.8	45.4
2SR	4.9	45.3
y	5.0	45.2
bl	5.4	44.8
SL	6.8	43.4

50⁷

E of Gresham st (80')

SL	7.5	42.7
bl	6.0	44.2
y	5.3	45.2
2SR	5.0	45.2
2RR	5.0	45.2
y	5.3	44.9
bl	5.2	45.0
2L	5.7	44.5

E of Gresham st

2L	5.8	44.4
bl	5.9	44.3
y	5.3	44.9
2RR	5.2	45.0
2SR	5.2	45.0
y	5.7	44.5
bl	6.2	44.0
SL	7.7	42.5

5018		5018	
Count of Buckhorn		Count of Buckhorn	
52	78	52	74
62	63	62	62
72	57	72	60
82	52	82	52
92	52	92	52
102	57	102	59
112	59	112	67
122	59	122	67
132	52	132	67
142	52	142	67
152	52	152	67
162	52	162	67
172	52	172	67
182	52	182	67
192	52	192	67
202	52	202	67
212	52	212	67
222	52	222	67
232	52	232	67
242	52	242	67
252	52	252	67
262	52	262	67
272	52	272	67
282	52	282	67
292	52	292	67
302	52	302	67

31 POSTED

5018

Count of Buckhorn

32

33

33

34

34

35

35

36

The image shows an open notebook with two facing pages. Both pages are cream-colored and feature light blue horizontal ruling. Each page is also ruled with two vertical red lines, one on each side of the central gutter, creating a margin. The pages are otherwise blank, with no handwriting or printed text. The notebook's dark cover is visible at the very edges. The page numbers '36' and '37' are printed in the top corners of the left and right pages, respectively.



40

41

43

44

POSTED

cross-section of 27th St (60)
 100' to K (80)
 SW 26
 + K
 BM

1063	9842	87.79	
11.62	10845	15.9	96.83
1229	119.74	100	107.45
End of K St			
WL		9.0	110.7
+10'		10.0	109.7
bl		9.3	110.4
4		8.8	110.9
6		8.3	111.4
114		7.6	112.1
bl		6.6	113.1
EL		6.9	112.8
25' end of K St			
EL		35	116.2
bl		33	116.4
4		35	116.2
6		44	115.3
4		47	115.0
bl		52	114.5
+5		65	113.2
W2		57	114.0

119.74

45

50' end of K St

WL		24	117.3
+3		3.8	115.9
bl		1.8	117.9
4		1.3	118.4
6		0.7	119.0
10	1146	130.01	119
114		10.1	118.55
bl		10.0	119.9
EL		10.2	120.0
75' end of K St			
EL		7.5	119.8
bl		7.4	122.5
4		7.5	122.6
6		8.1	122.5
4		8.9	121.9
bl		9.5	121.9
+5		11.3	120.5
WL		9.9	118.7
			120.1

13001

100' n of K st

W2	75	122.5
73	88	121.2
bl	72	122.8
74	62	123.8
8	51	124.9
4	47	125.3
bl	48	125.2
82	43	125.7

125' n of K st

82	28	127.2
bl	28	127.2
4	30	127.0
6	30	127.0
41	40	126.0
bl	51	124.9
77	69	123.1
W2	56	124.4

13001

46

150' n of K st

W2	36	126.4
72	48	125.2
bl	33	126.7
4	25	127.5
6	19	128.1
4	14	128.6
bl	14	128.6
82	12	128.8

7P 1243 14110 134 12867

175' n of K st

82	105	130.6
	105	130.6
	109	130.2
6	115	129.6
	120	129.1
bl	123	128.8
79	133	127.8
W2	129	128.2

14/10

200' n of K st

WL	110	130.1
75	125	128.8
bl	104	130.5
y	107	130.4
b	99	131.2
y	91	132.0
bl	89	132.2
EL	89	132.2

225' n of K st

EWL	71	134.0
bl	74	133.7
y	76	133.5
b	80	133.1
y	83	133.8
bl	86	132.5
74	105	130.6
x		
WL	89	132.2

14/10

47

250' n of K st

WL	68	134.3
75	91	132.0
bl	67	134.4
y	65	134.6
b	62	134.9
y	59	135.2
bl	53	135.8
EL	52	135.9

275' n of K st

EL	30	138.1
	34	137.7
y	37	137.4
b	43	136.8
y	48	136.3
bl	50	136.1
75	69	134.2
WL	47	136.4

141.0

	300'	net	K st	
WL			13-	139.6
bl			17	139.4
y			20	139.1
b			1.3	139.8
y			0.7	140.4
bl			0.5-	140.6
EL			0.4	140.7
TP	950	150.00	0.60	140.50
	310'	2-	S 2' of J st (70.30')	
EL			7.8	142.6
bl			7.9	142.5
y			8.2	142.2
b			8.9	141.5
y			9.3	141.1
bl			8.9	140.5
WL			8.9	141.7

150.00

	S 2' of J st (70')	(10' bl)
WL	6.6	143.8
bl	6.9	143.5
y	7.3	143.1
b	7.3	143.1
y	7.0	143.4
bl	7.1	143.3
EL	6.7	143.7
	S 1/4 of J st	

EL	6.0	144.4
bl	6.2	144.2
y	6.4	144.0
b	5.9	144.5
y	5.3	145.1
bl	5.0	145.4
WL	4.9	145.5

150.00

center of jet

W2	41	146.0
bl	42	146.2
y	42	146.2
l	44	146.0
y	46	145.8
bl	46	145.8
EL	46	145.8

N 1/4 of jet

EL	37	146.7
bl	41	146.3
y	40	146.4
l	35	146.9
y	33	147.1
bl	38	146.6
W2	41	146.3

150.00

POSTED

49

N 1/4 of jet

W2	33	147.1
bl	26	147.8
y	26	147.8
l	28	147.6
y	33	147.1
bl	33	147.1
EL	28	147.6

N 1/4 of jet

EL	20	148.4
bl	24	148.0
y	26	147.8
l	20	148.4
y	14	149.0
bl	13	149.1
W2	10	149.4

POSTED

cross-section of Lincoln
from Cleveland to Bluff
(86)

228 30763 30525

W of Cleveland

SL	25	3051
bl	28	3048
4	28	3048
6	22	3054
4	24	3052
bl	17	3059
SL	16	3060

W of Cleveland on north

6.6 w of " on south

SL	16	3060
bl	28	3048
4	29	3047
6	28	3048
4	29	3047
bl	40	3036
SL = 6.6 w of Cleveland	45	3031

see page (8)

30763

51

25' W of Cleveland from North side

SL	51	3025
bl	56	3020
4	54	3022
6	46	3030
4	46	3030
bl	45	3031
SL	25	3051

50' W of Cleveland on north

SL	25	3051
bl	45	3031
4	49	3027
6	47	3029
4	51	3025
bl	58	3018
SL	59	3017

30763

75' w of Cleveland

SL	6.0	301.6
bb	5.5	302.1
4	5.2	302.4
6	4.5	303.1
4	4.8	302.8
bb	3.4	304.2
SL	2.6	305.0

100' w of Cleveland

SL	2.9	304.7
bb	3.9	303.7
4	4.8	302.8
6	4.6	303.0
4	5.0	302.6
bb	5.5	302.1
SL	6.0	301.6

30762

125' w of Cleveland on N

SL	6.0	301.6
bb	5.7	301.9
4	5.2	302.4
6	4.6	303.0
4	4.7	302.9
bb	3.6	304.0
SL	2.8	304.8

150' w of Cleveland

SL	3.1	304.5
bb	3.4	304.2
4	4.5	303.1
6	4.7	302.9
4	5.4	302.2
bb	5.7	301.9
SL	6.0	301.6

52

30768

175' W of Cleveland

SL	60	301.6
bl	58	301.8
y	54	302.2
b	50	302.6
y	50	302.6
bl	48	302.8
nl	34	304.2

200' W of Cleveland

nl	43	303.3
bl	46	303.0
y	56	302.0
b	51	302.5
y	58	301.8
bl	60	301.6
SL	63	301.3

30763

53

225' W of Cleveland

SL	70	300.6
bl	63	301.3
y	62	301.4
b	53	302.3
y	57	301.9
bl	54	302.2
nl	51	302.5

TP	354	20623	494	20269
----	-----	-------	-----	-------

250' W of Cleveland

nl	37	302.5
b	41	302.1
y	44	301.8
b	42	302.0
y	50	301.2
bl	53	300.9
SL	56	300.6

30623

278 W of level and =

SL	57	300.5
bl	52	301.0
"	51	301.1
b	44	301.8
"	45	301.7
bl	42	302.0
RL	41	302.1

294 W of level on N + 300 W on S (E 1)

RL	47	302.1
bl	42	302.0
"	48	301.4
b	44	301.8
"	48	301.4
bl	33	300.9
SL	55	300.7

20623

E of level

54

SL	54	300.8
bl	53	300.9
"	49	301.3
b	45	301.7
"	46	301.6
bl	38	302.4
RL	40	302.2

E 1/4 of level

2	40	302.2
bl	42	302.0
"	47	301.5
b	45	301.7
"	57	301.1
bl	52	301.0
SL	59	300.3

306.23

Center of Hand drills

52	56	300.6
bl	51	301.1
4	49	301.3
6	44	301.8
4	47	301.5
bl	38	302.4
22	34	302.8

W² of Hand drills

22	34	302.8
bl	34	302.8
4	44	301.8
6	45	301.7
4	53	300.9
bl	55	300.7
52	59	300.3

306.23

W lb of Hand drills

52	59	300.3
bl	53	300.9
4	49	301.3
6	46	301.6
4	46	301.6
bl	33	302.9
22	33	302.9

W² of Hand drills = 378 W² of blackwell ^{on 22}

22	32	303.0
bl	37	302.5
4	50	301.2
6	47	301.5
4	50	301.2
bl	55	300.7
52	60	300.2

55

	50' W of	Handouts
SA		68 299.4
tl		63 299.9
4		53 300.9
6		57 301.1
4		45 301.7
tl		46 301.6
22		44 301.8

	100' W of	Handouts
22		47 301.5
tl		53 300.9
4		59 300.3
6		54 300.8
4		63 299.9
tl		65 299.7
SA		66 299.6

broken in st

	150' W of	Handouts
SA		68 299.4
tl		64 299.8
4		67 300.0
6		57 300.5
4		61 300.2
tl		56 300.6
22		53 300.9

TP 2.88 302.46 5.65 301.58

	200' W of	Handouts
22		39 299.6
tl		37 299.8
4		39 299.6
6		33 300.0
4		41 299.4
tl		40 299.5
SA		45 299.2

30346

225 E d of Maryland an (864)

SD	4,6	298,9
bl	4,4	299,1
4	4,1	299,4
6	4,0	299,5
4	4,3	299,2
bl	4,1	299,4
SD	4,4	299,1

E bl of Maryland an

SD	4,0	299,5
bl	4,0	299,5
4	4,5	299,0
6	4,3	299,2
4	4,4	299,1
bl	5,0	298,5
SD	5,2	298,3

30346

E 1/4 of Maryland

57

SD	5,2	298,3
bl	4,8	298,7
4	4,5	299,0
6	4,4	299,1
4	4,7	298,8
bl	4,5	299,0
SD	4,8	298,7

Center of Maryland

SD	4,6	298,9
bl	4,9	298,6
4	4,9	298,6
6	4,7	298,8
4	4,6	298,9
bl	5,1	298,4
SD	5,5	298,0

30346

W 1/4 of Maryland

SL	5-3	298.2
bl	5-3	298.2
4	5-0	298.5
6	4-9	298.6
4	4-8	298.7
bl	5-1	298.4
n2	4-2	299.3

W 1/4 of Maryland

n2	4-7	298.8
bl	5-1	298.4
4	5-2	298.3
6	5-0	298.5
4	5-3	298.2
bl	5-3	298.2
SL	5-3	298.2

30346

58

W 1/4 of Maryland

SL	5-4	298.1
bl	5-5	298.0
4	5-7	297.8
6	5-2	298.3
4	5-7	297.8
bl	5-3	298.2
n2	5-3	298.2

30' W of Maryland

n2	5-6	297.9
bl	6-0	297.5
4	6-0	297.5
6	5-8	297.7
4	6-0	297.5
bl	5-6	297.9
SL	5-7	297.8

30346

60' W of Maryland
= E line of Delaware st (85.7)

SL	5.7	297.8
bl	5.9	297.6
"	6.2	297.3
b	5.9	297.6
"	6.2	297.3
bl	6.0	297.5
SL	6.5	297.0
	22.5' W on north } = Angle point 8' W on south }	
SL	6.1	297.4
bl	6.0	297.5
"	6.7	296.8
b	5.8	297.7
"	6.1	297.4
bl	6.0	297.5
SL	5.7	297.8

30346

59

Center of Delaware

SL = 7' W of angle	5.7	297.8
bl	5.9	297.6
"	5.9	297.6
b	6.0	297.5
"	7.0	296.5
bl	7.0	296.5
SL = about 20' W of angle	7.2	296.3

W 1/4 of Delaware st

SL = 0' W of angle	7.0	296.5
bl	7.0	296.0
"	6.9	297.1
b	5.9	297.6
"	6.2	297.3
bl	5.6	297.9
SL	5.8	297.7

30346

W. side of Delaware

SL	57	297.8
bl	57	297.8
"	62	297.3
l	58	297.7
y	61	297.4
bl	62	297.3
SL	62	297.3

4/44 (S. of Vermont)

E. side of Delaware

SL	62	297.3		
bl	57	297.8		
y	55	298.0		
l	60	297.5		
y	58	297.7		
bl	60	297.5		
SL	56	297.9		
TP	5-39	30317	528	297.78

30317

44' W of Delaware
400' E of Vermont

60

SL	55	297.7
bl	53	297.9
y	50	298.2
l	52	298.0
y	53	297.9
bl	52	298.0
SL	52	298.0

350' E of Vermont

SL	52	298.0
bl	52	298.0
y	50	298.2
l	44	298.8
y	54	297.8
bl	50	298.2
SL	51	298.1

30317

300' E of Vermont

SL	55	297.7
bl	52	298.0
4	53	297.9
6	45	298.7
4	50	298.2
bl	49	298.3
SL	51	298.1

250' E of Vermont

SL	55	297.7
bl	60	297.2
4	62	297.0
6	54	297.8
4	61	297.1
bl	60	297.2
SL	61	297.1

30317

61

200' E of Vermont ✓

SL	70	296.2
bl	71	296.1
4	89	295.3
6	66	296.6
4	71	296.1
bl	71	296.1
SL	61	297.1

150' E of Vermont ✓

SL	79	295.3
bl	86	294.6
4	88	294.4
6	85	294.7
4	93	293.9
bl	89	294.3
SL	86	294.6
TP	222	296.81
	858	294.54

29681

100' E of monument

SL	47	292.1
bl	42	292.6
y	47	292.1
b	39	292.9
y	45	292.3
bl	35	293.3
SL	34	293.4

75' E of monument

SL	41	292.7
bl	47	292.1
y	54	291.4
b	51	291.7
y	56	291.2
bl	53	291.5
SL	60	290.8

29681

62

50' E of monument

SL	94	287.4
bl	75	289.3
y	64	290.4
b	60	290.8
y	66	290.2
bl	53	291.5
SL	52	291.6

25' E of monument

SL	64	290.4
bl	67	290.1
y	67	290.1
b	63	290.5
y	67	290.1
bl	80	288.8
SL	121	284.7

29681

E line of Vermont (80')

SL	83	288.5
bl	82	288.6
y	68	290.0
l	65	290.3
y	65	290.3
bl	73	289.5
SL	69	289.9

E-bl of Vermont

SL	66	290.2
bl	66	290.2
y	65	290.3
l	64	290.4
y	65	290.3
bl	70	289.8
SL	70	289.8

29681

63

E line of Vermont

SL	53	291.5
bl	56	291.2
y	64	290.4
l	61	290.7
y	66	290.2
bl	59	290.9
SL	60	290.8

Center Vermont

SL	55	291.3
bl	54	291.4
y	55	291.3
l	56	291.2
y	57	291.1
bl	50	291.8
SL	44	292.4

29681

W¹/₄ of Vermont

SL	41	292.7
bl	43	292.5
4	51	291.7
6	52	291.6
4	51	291.7
bl	47	292.1
SL	52	291.6

W¹/₄ of Vermont

SL	48	292.0
bl	46	292.2
4	52	291.6
6	48	292.0
4	48	292.0
bl	43	292.5
SL	40	292.8

29681

W¹/₄ of Vermont

SL	40	292.8
bl	44	292.4
4	48	292.0
6	47	292.1
4	50	291.8
bl	44	292.4
SL	40	292.8

50' W of Vermont

SL	46	292.2
bl	47	292.1
4	51	291.3
6	50	291.8
4	57	291.1
bl	52	291.6
SL	53	291.5

29681
540
292.6

64

29681

100' w of Vermont

SL	61	290.7
bl	60	290.8
y	63	290.5
l	56	291.2
y	61	290.7
bl	56	291.2
SL	50	291.8

150' w of Vermont

SL	62	290.6
bl	63	290.5
y	66	290.2
l	62	290.6
y	71	289.7
bl	68	290.0
SL	65	290.3

29681

200' w of Vermont

SL	81	288.7
bl	80	288.8
y	85	288.3
l	82	288.6
y	90	287.8
bl	88	288.0
SL	92	287.2

TP 0.41 289.2 810 288.71

250' w of Vermont

SL	22	286.9
bl	20	287.1
y	22	286.9
l	20	287.1
y	22	286.9
bl	18	287.3
SL	16	287.5

55

28912

300' W of Vermont

SL	2,7	286,4
bl	2,9	286,2
y	3,6	285,5
b	3,3	285,8
y	3,8	285,3
bl	4,8	284,3
n2	6,4	282,7

350' W of Vermont

n2	10,6	278,5
bl	8,3	280,8
y	5,3	283,8
b	4,2	284,9
y	4,4	284,7
bl	3,9	285,2
SL	3,7	285,4

28912

56

400' W of Vermont

SL	5,0	284,1
bl	5,1	284,0
y	5,4	283,7
b	5,1	284,0
y	6,2	282,9
bl	7,5	281,6
n2	8,3	280,8

450' W of Vermont

n2	8,1	281,0
bl	7,1	282,0
y	6,6	282,5
b	6,3	282,8
y	6,7	282,4
bl	5,9	283,2
SL	5,6	283,5

289.12

500' n of Vermont

SL	66	282.5
lh	60	283.1
4	66	282.5
6	65	282.6
4	70	282.1
lh	90	280.1
ns	120	278.1

11.0

537.5' W = Pueblo line

ns = 538' W	157	273.4
lh	124	276.7
4	104	278.7
6	98	279.3
4	97	279.4
lh	98	279.3
SL = 537.5' W	100	279.1
TP	295	279.11

S line

✓

67

68

69

70

71

X section Lincoln ave

	H.I.	
	12.90	325.45
a		312.55
	East line river at Boul.	
So. line	11.6	313.8
	10.8	314.6
	10.1	315.3
c	9.7	315.7
	9.6	315.8
	7.7	317.7
n. line	7.4	318.0
	25' E	
n. line	5.3	320.1
cb	5.8	319.6
cb + 2'	7.8	317.6
1/4	8.1	317.3
c	8.8	316.6
	9.3	316.1
	10.2	315.2
So. line	11.2	314.2

Park Blvd to West end of street

April 2, 1907

Latitude
Burke 72
Linn

50' E

So. line	10.5	314.9
	9.7	315.7
	8.4	317.0
c	8.0	317.4
	7.5	317.9
1/2 + 10'	7.0	318.4
cb	5.4	320.0
n. line	4.6	320.8
	75' E	
n. line	5.1	320.3
	6.3	319.1
	7.1	318.3
c	7.2	318.2
	7.8	317.6
	8.9	316.5
So. line	9.6	315.8

100' E

Solino 8.2 317.2

7.9 317.5

7.2 318.2

e 6.5 318.9

7.0 318.4

6.3 319.1

n line 4.9 320.5

125' E

n line 5.2 320.2

6.1 319.3

6.8 318.6

c 6.1 319.3

6.6 318.8

7.4 318.0

Solino 7.7 317.7

150' E

Solino 8.1 317.3

7.4 318.0

6.4 319.0

c 5.8 319.6

6.1 319.3

5.3 320.1

n line 5.3 320.1

175' E

n line 4.6 320.8

4.8 320.6

5.8 319.6

c 5.3 320.1

6.0 319.4

6.6 318.8

Solino 6.6 318.8

73

200' E

Solins	6.0	319.4
	5.3	320.1
	5.4	320.0
C	5.1	320.3
	5.4	320.0
	5.3	320.1
n line	4.2	321.2

225' E

n line	3.3	322.1
	4.1	321.3
	4.9	320.5
C	3.9	321.5
	4.7	320.7
	5.0	320.4
Solins	5.1	320.3

200' E

Solins	4.2	321.2
	4.1	321.3
	3.8	321.6
C	3.4	322.0
	4.1	321.3
	3.0	322.4
n line	2.0	323.4

275' E

n line	0.8	324.6
	1.9	323.5
	3.0	322.4
C	2.2	323.2
	3.0	322.4
	2.9	322.5
Solins	3.0	322.4

32545

300's Westline Center ST.

W 1/4

75

Soline	2.0	323.4
	2.1	325.3
	2.0	323.4
c	1.6	323.8
	2.0	323.4
	0.5	325.0
Nline	-0.4	325.9

J.P.	9.60	H.E. 334.76	0.29	325.16
------	------	-------------	------	--------

Wline	West CB		
Nline		7.8	327.0
		9.3	325.5
		10.3	324.5
c		10.2	324.6
		10.8	324.0
		11.4	323.4
Soline		11.9	323.0

Soline	12.0	322.8
	11.6	323.2
	10.4	324.4
c	9.7	325.1
	9.8	325.0
	8.8	326.0
Nline	7.5	327.3

Center

Nline	7.8	327.0
	8.7	326.1
	9.1	325.7
c	9.1	325.7
	9.6	325.2
	11.1	323.7
Soline	11.9	323.0

E 1/4

Soline	11.6	323.2
	10.7	324.1
	9.2	325.6
e	8.9	325.9
	8.8	326.0
	8.0	326.8
n line	6.9	327.9
	25' E	
n line	6.3	328.5
	7.5	327.3
	8.3	326.5
e	8.3	326.5
	8.6	326.2
	10.2	324.0
Soline	11.0	323.8

East line center st.

Soline	10.5	324.3
	9.7	325.1
	8.0	326.8
e	7.6	327.2
	7.4	327.4
	6.8	328.0
n line	5.3	329.5
	25' E	
n line	3.9	330.9
	5.1	329.7
	6.4	328.4
e	6.1	328.7
	6.9	327.9
	8.0	326.8
Soline	9.1	325.7

	50' E	
Solms	8.8	326.0
	7.7	327.1
	5.9	324.9
c	5.1	329.7
	5.4	329.4
	4.0	330.8
nlms	3.0	331.8

	75' E	
nlms	2.6	332.2
	3.2	331.6
	4.3	330.5
c	4.0	330.8
	4.8	330.0
	6.3	328.5
Solms	7.1	327.7

	100' E	
Solms	6.7	328.1
	5.7	329.1
	4.0	330.8
c	3.2	331.6
	3.9	330.9
	3.3	331.5
nlms	1.6	333.2

	125' E	
nlms	1.3	333.5
	2.5	332.3
	3.1	331.7
c	2.8	332.0
	3.4	331.4
	4.8	330.0
Solms	5.7	329.1

N 70° E

Soline	5.1	329.7
	4.1	330.7
	3.2	331.6
c	2.6	332.2
	3.0	332.8
	2.1	332.7
N line	1.0	333.8
	177.0	c
N line	2.0	332.8
	2.2	332.6
	3.4	331.4
c	3.0	331.8
	3.3	331.5
	3.6	331.2
Soline	4.7	330.1

210.8 West line Park Boulevard.

Soline	5.3	329.5
	4.5	330.3
	3.8	331.0
c	3.2	331.6
	3.1	331.7
	3.4	331.8
N line	2.0	332.8
	4.5	317.08
	4.5	312.55 B.M.
	East Ch. University Boulevard	
Soline	4.4	312.7
	3.8	313.3
	3.0	314.1
c	2.6	314.5
	2.3	314.8
	1.0	316.1
N. line	-0.2	317.3

5

East 1/4

n line	0.2	316.9
	0.9	316.2
	1.5	315.6
c	2.0	315.1
	2.5	314.6
	3.0	314.1
Sol line	3.7	313.4

Center

Sol line	3.3	313.8
	2.7	314.4
	2.4	314.7
c	2.1	315.0
	1.5	315.6
	0.9	316.2
n line	0.4	316.7

79

W 1/4

n line	1.5	315.6
	2.1	315.0
	2.7	314.4
c	3.0	314.1
	3.4	313.7
	3.7	313.4
Sol line	4.1	313.0

W, c.b.

Sol line	5.1	312.0
	5.4	311.7
	4.8	312.3
c	4.7	312.4
	4.5	312.6
	3.7	313.4
n line	2.5	314.6

West line University Blvd.

n line 2.7 314.4

3.9 313.2

5.4 311.7

e 5.4 311.7

5.2 311.9

5.8 311.3

Sol line 6.1 311.0

25' W

Sol line 8.5 308.6

7.9 309.2

7.2 309.9

c 6.7 310.4

6.4 310.7

5.6 311.5

n line 5.0 312.1

50' W

n line 5.9 311.2

6.2 310.9

7.6 309.5

e 7.8 309.3

8.4 308.7

9.0 308.1

Sol line 9.4 307.7

75' W

Sol line 10.5 306.6

10.0 307.1

9.6 307.5

c 8.9 308.2

8.9 308.2

7.1 310.0

n line 6.3 310.8

POSTED

3 17,08

100' W

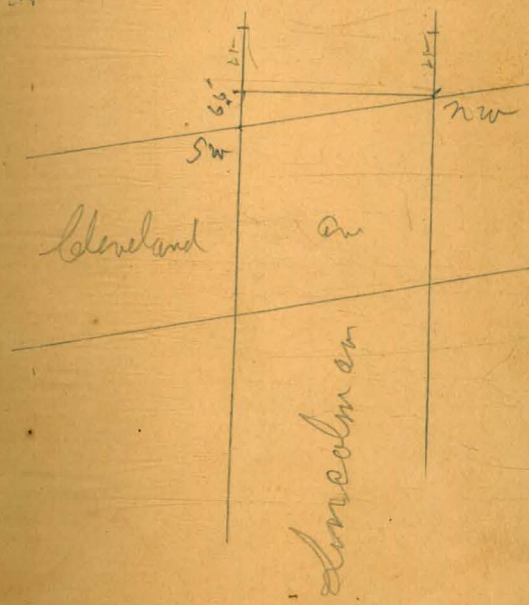
n line	n line	7.8	307.3
		8.6	308.5
		9.8	307.3
e	e	10.0	307.1
		10.7	306.4
		10.8	306.3
Soline	Soline	10.7	306.4
		125' W	
Soline	Soline	10.7	306.4
		11.3	305.8
		11.5	305.6
c	c	10.9	306.2
		11.3	305.8
		10.2	306.9
n line	n line	9.3	307.8

138.8 on south
144.0 " north
East line Cleveland ave

(81)

n line	10.7	306.4
	11.5	305.6
	11.4	305.7
c	11.3	305.8
	11.7	305.4
	12.1	305.0
Soline	12.0	305.1
J.P.	11.83	305.25

SE line



TRAVERSE TABLE FOR TRANSIT BOOK.

From 1° to 90° for a distance of 100.

Degrees.	DEGREES.		¼ DEGREE.		½ DEGREE.		¾ DEGREE.		Degrees.
	Lat.	Dep.	Lat.	Dep.	Lat.	Dep.	Lat.	Dep.	
0			100.00	0.44	100.00	0.87	99.99	1.31	89
1	99.98	1.75	99.98	2.18	99.97	2.62	99.95	3.05	88
2	99.94	3.49	99.92	3.93	99.91	4.36	99.88	4.80	87
3	99.86	5.23	99.84	5.67	99.81	6.10	99.79	6.54	86
4	99.76	6.98	99.73	7.41	99.69	7.85	99.66	8.28	85
5	99.62	8.72	99.58	9.15	99.54	9.58	99.50	10.02	84
6	99.45	10.45	99.41	10.89	99.36	11.32	99.31	11.75	83
7	99.25	12.19	99.20	12.62	99.14	13.05	99.09	13.49	82
8	99.03	13.92	98.97	14.35	98.90	14.78	98.84	15.21	81
9	98.77	15.64	98.70	16.07	98.63	16.50	98.56	16.93	80
10	98.48	17.36	98.40	17.79	98.33	18.22	98.25	18.65	79
11	98.16	19.08	98.08	19.51	97.99	19.94	97.90	20.36	78
12	97.81	20.79	97.72	21.22	97.63	21.64	97.53	22.07	77
13	97.44	22.50	97.34	22.92	97.24	23.34	97.13	23.77	76
14	97.03	24.19	96.92	24.62	96.81	25.04	96.70	25.46	75
15	96.59	25.88	96.48	26.30	96.36	26.72	96.25	27.14	74
16	96.13	27.56	96.00	27.98	95.88	28.40	95.76	28.52	73
17	95.63	29.24	95.50	29.65	95.37	30.07	95.24	30.49	72
18	95.11	30.90	94.97	31.32	94.83	31.73	94.69	32.14	71
19	94.55	32.56	94.41	32.97	94.26	33.38	94.12	33.79	70
20	93.97	34.20	93.82	34.61	93.67	35.02	93.51	35.43	69
21	93.36	35.84	93.20	36.24	93.04	36.65	92.88	37.66	68
22	92.72	37.46	92.55	37.86	92.39	38.27	92.22	38.67	67
23	92.05	39.07	91.88	39.47	91.71	39.87	91.53	40.27	66
24	91.35	40.67	91.18	41.07	91.00	41.47	90.81	41.87	65
25	90.63	42.26	90.45	42.66	90.26	43.05	90.07	43.44	64
26	89.88	43.84	89.69	44.23	89.49	44.62	89.30	45.01	63
27	89.10	45.40	88.90	45.79	88.70	46.17	88.50	46.56	62
28	88.29	46.95	88.09	47.33	87.88	47.72	87.67	48.10	61
29	87.46	48.48	87.25	48.86	87.04	49.24	86.82	49.62	60
30	86.60	50.00	86.38	50.38	86.16	50.75	85.94	51.13	59
31	85.72	51.50	85.49	51.88	85.26	52.25	85.04	52.62	58
32	84.80	52.99	84.57	53.36	84.34	53.73	84.10	54.10	57
33	83.87	54.46	83.63	54.83	83.39	55.19	83.15	55.56	56
34	82.90	55.92	82.66	56.28	82.41	56.64	82.16	57.00	55
35	81.92	57.36	81.66	57.71	81.41	58.07	81.16	58.42	54
36	80.90	58.78	80.64	59.13	80.39	59.48	80.13	59.83	53
37	79.86	60.18	79.60	60.53	79.34	60.88	79.07	61.22	52
38	78.80	61.57	78.53	61.91	78.26	62.25	77.99	62.59	51
39	77.71	62.93	77.44	63.27	77.16	63.61	76.88	63.94	50
40	76.60	64.28	76.32	64.61	76.04	64.94	75.76	65.28	49
41	75.47	65.61	75.18	65.93	74.90	66.26	74.61	66.59	48
42	74.31	66.91	74.02	67.24	73.73	67.56	73.43	67.88	47
43	73.14	68.20	72.84	68.52	72.54	68.84	72.24	69.15	46
44	71.93	69.47	71.63	69.78	71.23	70.00	71.02	70.40	45
45	70.71	70.71							
Degrees.	Dep.	Lat.	Dep.	Lat.	Dep.	Lat.	Dep.	Lat.	Degrees.
	DEGREES.		¼ DEGREE.		½ DEGREE.		¾ DEGREE.		

Published by H. S. CROCKER COMPANY, Stationers, Drawing Materials,
Mathematical Instruments, etc., San Francisco.