

TRANSIT

303

F.B. 300

H. M. CROCKER COMPANY

DRAWING MATERIALS AND
SURVEYING INSTRUMENTS
SAN FRANCISCO

300

TABLES FOR EXCAVATIONS AND EMBANKMENTS

DISTANCES FROM CENTER OF ROADWAY FOR CROSS-SECTIONING

Roadway 18 Feet Wide. Side Slopes 1 to 1.
For Single Track Excavation.

"Copyright, 1895, by Kueffel & Esser Co."

	0	.1	.2	.3	.4	.5	.6	.7	.8	.9	
0	9.0	9.1	9.2	9.3	9.4	9.5	9.6	9.7	9.8	9.9	0
1	10.0	10.1	10.2	10.3	10.4	10.5	10.6	10.7	10.8	10.9	1
2	11.0	11.1	11.2	11.3	11.4	11.5	11.6	11.7	11.8	11.9	2
3	12.0	12.1	12.2	12.3	12.4	12.5	12.6	12.7	12.8	12.9	3
4	13.0	13.1	13.2	13.3	13.4	13.5	13.6	13.7	13.8	13.9	4
5	14.0	14.1	14.2	14.3	14.4	14.5	14.6	14.7	14.8	14.9	5
6	15.0	15.1	15.2	15.3	15.4	15.5	15.6	15.7	15.8	15.9	6
7	16.0	16.1	16.2	16.3	16.4	16.5	16.6	16.7	16.8	16.9	7
8	17.0	17.1	17.2	17.3	17.4	17.5	17.6	17.7	17.8	17.9	8
9	18.0	18.1	18.2	18.3	18.4	18.5	18.6	18.7	18.8	18.9	9
10	19.0	19.1	19.2	19.3	19.4	19.5	19.6	19.7	19.8	19.9	10
11	20.0	20.1	20.2	20.3	20.4	20.5	20.6	20.7	20.8	20.9	11
12	21.0	21.1	21.2	21.3	21.4	21.5	21.6	21.7	21.8	21.9	12
13	22.0	22.1	22.2	22.3	22.4	22.5	22.6	22.7	22.8	22.9	13
14	23.0	23.1	23.2	23.3	23.4	23.5	23.6	23.7	23.8	23.9	14
15	24.0	24.1	24.2	24.3	24.4	24.5	24.6	24.7	24.8	24.9	15
16	25.0	25.1	25.2	25.3	25.4	25.5	25.6	25.7	25.8	25.9	16
17	26.0	26.1	26.2	26.3	26.4	26.5	26.6	26.7	26.8	26.9	17
18	27.0	27.1	27.2	27.3	27.4	27.5	27.6	27.7	27.8	27.9	18
19	28.0	28.1	28.2	28.3	28.4	28.5	28.6	28.7	28.8	28.9	19
20	29.0	29.1	29.2	29.3	29.4	29.5	29.6	29.7	29.8	29.9	20
21	30.0	30.1	30.2	30.3	30.4	30.5	30.6	30.7	30.8	30.9	21
22	31.0	31.1	31.2	31.3	31.4	31.5	31.6	31.7	31.8	31.9	22
23	32.0	32.1	32.2	32.3	32.4	32.5	32.6	32.7	32.8	32.9	23
24	33.0	33.1	33.2	33.3	33.4	33.5	33.6	33.7	33.8	33.9	24
25	34.0	34.1	34.2	34.3	34.4	34.5	34.6	34.7	34.8	34.9	25
26	35.0	35.1	35.2	35.3	35.4	35.5	35.6	35.7	35.8	35.9	26
27	36.0	36.1	36.2	36.3	36.4	36.5	36.6	36.7	36.8	36.9	27
28	37.0	37.1	37.2	37.3	37.4	37.5	37.6	37.7	37.8	37.9	28
29	38.0	38.1	38.2	38.3	38.4	38.5	38.6	38.7	38.8	38.9	29
30	39.0	39.1	39.2	39.3	39.4	39.5	39.6	39.7	39.8	39.9	30
31	40.0	40.1	40.2	40.3	40.4	40.5	40.6	40.7	40.8	40.9	31
32	41.0	41.1	41.2	41.3	41.4	41.5	41.6	41.7	41.8	41.9	32
33	42.0	42.1	42.2	42.3	42.4	42.5	42.6	42.7	42.8	42.9	33
34	43.0	43.1	43.2	43.3	43.4	43.5	43.6	43.7	43.8	43.9	34
35	44.0	44.1	44.2	44.3	44.4	44.5	44.6	44.7	44.8	44.9	35
36	45.0	45.1	45.2	45.3	45.4	45.5	45.6	45.7	45.8	45.9	36

Calculated by Julien A. Hall, M. Am. Soc. C. E.

H

MICROFILM COMPANY
SERIALS ACQUISITION
300

TAB

D

C

0	9
1	10
2	11
3	12
4	13
5	14
6	15
7	16
8	17
9	18
10	19
11	20
12	21
13	22
14	23
15	24
16	25
17	26
18	27
19	28
20	29
21	30
22	31
23	32
24	33
25	34
26	35
27	36

1

	286	376		0.90	Bm W57
TP	12.90	15.68	1.00	2.76	25.00 2.00 4.00
TP	8.54	24.11	0.11	15.58	
TP	12.74	36.04	0.81	22.28	
TP	11.77	47.16	0.15	35.89	
Bm			10.52	36.62	Bm 20.00 25.00 50.00
TP	11.73	57.93	0.46	46.68	SE 1/4 Sec 36
TP	8.82	65.49	1.26	56.68	
Bm	0.09	58.83	6.75	58.72	S 1/4 Sec 34 N 1/4 Sec 34
Bm	4.95	52.70	11.04	47.78	33
Bm	6.27	55.91	5.76	49.12	SP 1/4 Sec 34 SE 1/4 Sec 34 SW 1/4 Sec 34
TP	2.60	53.88	4.13	51.26	
Bm			1.01	52.80	SE 1/4 Sec 34 SW 1/4 Sec 34
TP	1.03	45.23	11.68	42.08	SE 1/4 Sec 34 SW 1/4 Sec 34
Bm			41.75	38.38	SP 1/4 Sec 34 2.00
TP	3.66	36.71	10.18	33.05	
			9.95	27.16	Bm 20.00 Bench 4.22
				27.15	
				25.57	Bm 20.00 26.00
				40.84	SE 1/4 Sec 34 2.7
				50.49	SW 1/4 Sec 34 3.8

36.62	
12.70	
49.32	
87	
49.65	
7.92	
56.25	56.25
1.72	57
55.85	50.85
5.7	49.2
49.1	1.6

1
 2
 Cross-section of Rosecransst
 Zouch (v6) to ³⁹
 (100' ana) (Plotted as to Profile)
 Aug 1, 1927

970 3477 2537

2 line of Zouch

EL	1100	22.8
bb	9.5	25.3
4	8.3	26.5
b	6.5	28.3
4	5.8	29.0
bb	5.5	29.3
w2	4.5	30.3

50' N of Zouch

w2	3.7	31.1
bb	5.0	29.8
4	5.2	29.6
b	6.1	28.7
4	8.0	26.8
bb	9.0	25.8
EL	9.8	25.0

75' N of Zouch

EL	10.8	24.0
bb	11.2	23.5
4	9.0	25.8
b	6.1	28.7
4	4.7	30.1
bb	4.9	28.9
w2	3.8	31.1

3477

POSTED

3

100' N of Zouch (Culvert)

w2	31	31.7
bb	4.2	30.6
4+5	5.1	29.7
	4.6	30.2
b	5.4	29.4
4	9.0	25.8
	8.0	25.8
bb	8.4	26.4
EL	9.2	25.6

125' N of Zouch

EL	7.8	27.0
bb	7.4	27.4
4	6.0	28.8
b	5.0	29.8
4	4.2	30.6
bb	8.0	26.8
w2	9.0	25.8

150' N of Zouch

w2	1.5	33.3
bb	2.0	32.8
7.5	5.0	29.8
4	3.9	30.9
b	4.8	30.0
4	5.6	29.2
bb	6.9	27.9
EL	7.0	27.3

200 n = S of Alcott

El		83	26.5
bl		72	27.6
4		61	28.7
l		55	29.3
4		59	30.9
TS		43	30.5
FP	890	3605	27.15
bl		33	32.7
W2		23	32.7

S bl of Alcott (270) (70)

W2		20	34.0
bl		55	32.5
47		58	30.2
4		52	30.8
6		66	29.4
4		77	28.8
bl		86	27.1
El		97	26.3

S 1/4 of Alcott S

El		97	26.3
bl		89	27.1
4		81	27.9
l		65	29.5
4		57	30.9
+ 10		58	30.2
bl		34	32.6
W2		13	34.7

Center of Alcott st (70)

W2		13	34.7
bl		37	32.3
TS		55	30.5
4		50	31.0
l		54	30.6
4		78	28.2
bl		92	26.8
El		103	25.7

N 1/4 of Alcott st

El		103	25.7
bl		95	26.5
4		92	26.8
l		78	28.2
710		53	30.7
4		51	30.9
710		54	30.6
bl		41	31.9
		19	34.1

N bl of Alcott st

W2		13	34.7
bl		40	32.0
4		48	31.2
710		54	30.6
l		70	29.0
4		91	26.8
bl		99	26.1
El		105	25.5

3605

N2 Alcott ST 25th

Ed	11.0	25.0
bl	10.3	25.8
y	9.6	26.4
b	7.7	28.3
+5	5.5	30.5
y	4.9	31.1
bl	4.4	31.6
N2	0.8	35.2
50' n of Alcott ST		
N2	+100	37.00
bl	0.9	35.1
+10	5.2	30.8
y	4.9	31.1
+10	5.5	30.6
b	7.8	29.2
y	11.7	24.8
bl	12.2	23.8
Ed	12.6	23.4
100' n of Alcott		
Ed	13.6	22.4
bl	12.4	23.6
y	10.5	25.4
b	7.2	28.8
+6	4.6	31.6
y	4.7	31.3
+7	5.2	30.8
+9	1.5	34.5

3605

5

150' n of Alcott

POSTED

Ed	12.3	23.7
bl	10.6	25.4
y	8.1	27.9
b	4.8	31.2
y	4.8	31.2
+6	4.1	31.6

200' n = Sd Brauning ST (70')

Ed	10.8	25.2
bl	8.3	27.7
y	5.3	30.7
b	4.8	31.2
y	4.6	31.4

1222 40.07

100' n of Alcott

N2	1.6	38.5
bl	4.5	35.6

150' n of Alcott

N2	1.3	38.8
bl	3.6	36.5
+8	4.7	35.4

200' n = Sd Brauning

N2	+100	41.00
bl	0.9	39.2
+10	2.5	37.8

27.15 East Bench

S lb of Browning		st (70)	
EL	14.7	25.4	
bl	12.0	28.1	
4	9.5	30.6	
6	9.0	31.1	
4	7.0	32.5	
S 1/4 of Browning			
EL	11.7	28.7	
bl	10.1	30.0	
4	9.1	31.0	
6	9.2	30.9	
1/4	8.3	31.8	
Center of Browning			
EL	11.6	28.5	
bl	10.2	29.9	
4	9.3	30.8	
6	9.4	30.7	
1/4	8.0	32.1	
N 1/2 of Browning			
EL	11.8	28.3	
bl	10.2	29.6	
4	10.0	30.1	
6	9.3	30.8	
1/4	6.5	33.6	
N lb of Browning			
EL	13.5	26.6	
bl	11.6	28.5	
4	8.9	31.2	
6	6.5	33.6	

N lb of Browning			
EL	13.2	26.9	
bl	9.1	31.0	
4	6.8	33.3	
6	4.7	35.4	
50' N of Browning			
EL	9.7	30.4	
bl	5.5	34.6	
4	2.9	37.7	
6	0.8	39.3	
100' N of Browning			
EL	7.7	32.2	
bl	4.2	35.9	
4	0.6	39.5	
150' N of Browning			
EL	6.5	33.6	
bl	3.5	36.9	
TP	11.25 4992	133	3874
S lb of Browning			
W2	8.3	41.7	
bl	9.8	40.2	
T10	11.0	39.0	
S 1/4 of Browning			
W2	8.0	42.0	
bl	8.9	41.1	
T10	11.0	39.0	

4999

Center of Browning

W2	8.0	42.0
bb	9.8	40.2
+10	11.5	38.5

N 1/2 of Browning

W2	8.2	41.8
bb	10.6	39.4
+10	12.0	38.0

N 1/4 of Browning

W2	8.1	41.9
bb	9.9	40.1
4	14.4	35.6

N 1/2 of Browning

W2	6.3	43.7
bb	8.0	42.0
4	11.4	38.6

50' N of Browning

W2	2.7	47.3
bb	4.5	45.5
4	7.6	42.4

100' N of Browning

W2	0.8	49.2
bb	2.4	47.6
4	4.7	45.3
6	7.5	42.5

4992

7

150' N of Browning

W2	0.2	49.8
bb	1.4	48.6
4	4.2	45.8
6	6.0	44.0
4	9.6	40.4

200' N of St Curtis

CL	14.5	35.5
bb	11.0	39.0
4	8.4	41.6
6	4.2	44.8
4	2.6	47.4
bb	1.1	48.9

TP 719 51.86 542 49.57

W2 1.0 50.7

S 1/2 of Curtis (70)

W2	0.4	51.3
bb	2.2	49.5
4	4.3	47.4
6	8.1	43.6
4	10.9	40.8
bb	13.6	38.1
CL	16.0	35.7

S 1/4 of Section 20

Ed	15.6	36.2
ll	12.5	39.3
γ	9.7	42.1
6	6.6	45.2
γ	4.5	47.3
ll	2.2	49.6
W2	0.2	51.6

Center of Section

W2	0.9	50.9
ll	2.0	49.8
γ	3.7	48.1
6	6.9	44.9
γ	10.0	41.5
ll	11.9	39.9
Ed	14.6	37.2

N 1/2 of Section

Ed	13.3	38.5
ll	10.9	40.9
γ	9.1	42.7
6	6.0	45.8
γ	2.4	48.4
ll	2.0	49.8
W2	1.0	50.8

N 1/2 of Section

W2	0.4	51.4
ll	2.0	48.8
γ	3.5	46.3
6	5.5	46.3
γ	8.2	43.6
ll	10.0	41.8
Ed	12.8	39.0

N 1/2 of Section

Ed	13.3	37.5
ll	10.1	41.7
γ	7.9	43.9
6	5.5	46.3
γ	3.6	48.2
ll	2.3	49.5
W2	0.4	51.4

S 1/2 of Section

W2	1.8	50.0
ll	3.0	48.8
γ	4.5	47.3
6	5.7	46.1
γ	6.7	45.7
ll	9.0	42.8
Ed	11.1	40.7

51.76

75' n of Curtiss

Ed	11.6	40.2
bl	9.3	42.5
4	7.4	44.4
l	7.5	44.3
4	6.2	45.6
bl	5.3	46.5
W2	3.0	48.8

100' n of Curtiss

W2	6.8	45.0
bl	8.3	43.5
4	9.0	42.8
l	10.8	40.0
4	11.8	39.0
TP	0.16	42.02
bl	9.90	41.86
bl	5.2	36.8
Ed	7.7	34.3

125' n of Curtiss

Ed	11.8	30.2
bl	11.0	32.0
4	9.0	33.0
l	6.1	35.9
4	4.5	37.5
bl	4.3	37.7
W2	3.0	39.0

42.02

150' n of Curtiss

W2	6.7	35.3
bl	8.1	33.7
4	9.5	32.5
l	10.8	31.2
4	12.4	29.6
bl	13.3	28.7
Ed	13.0	29.0

175' n of Curtiss

Ed	10.4	31.6
bl	10.3	30.7
4	10.5	31.5
l	11.3	30.7
4	11.0	30.0
bl	11.3	30.7
W2	11.0	31.0

180' n of

W2	12.8	29.2
----	------	------

200' n = S 2 of Quince #70

W2	9.1	32.9
bl	9.3	32.7
4	9.5	32.5
l	9.5	32.5
4	7.0	35.0
bl	6.5	35.5
Ed	6.6	35.4

9

Ed Curtiss Pap
S Curt Curt. P.
41.86

S. 1/4 of Dumas

cd	5.0	37.0
bl	4.9	37.1
y	5.3	36.7
b	5.1	37.0
y	4.9	37.1
bl	5.7	36.1
wd	7.5	34.5

S. 1/4 of Dumas

wd	4.0	38.0
bl	3.6	38.4
y	3.3	38.7
b	3.7	38.3
y	4.0	38.0
bl	4.1	37.9
EL	3.3	38.7

Center of Dumas

EL	1.3	40.7
bl	1.6	40.4
y	1.2	40.7
b	0.9	41.1
y	0.8	41.2
bl	0.6	41.4
wd	1.8	41.2
TP	1.8	40.19

1219

5238

7000
water
11/10Hand cont.
Dumas in

N. 1/4 of Dumas

wd	9.9	42.5
bl	9.6	42.8
y	10.0	42.4
b	10.2	42.2
Br	10.21	42.1
y	11.2	41.2
bl	11.6	40.8
EL	11.7	40.7

N. 1/4 of Dumas

EL	9.2	43.2
bl	8.5	43.9
y	8.0	44.4
b	8.6	43.8
y	8.5	43.9
bl	8.2	44.2
wd	8.2	44.2

N. 1/4 of Dumas

wd	6.6	45.8
bl	6.8	45.6
y	7.2	45.2
b	7.6	44.8
y	7.7	44.7
bl	7.7	44.7
EL	8.5	43.9

5238

50' N. of Dumas

EL		4.6	47.8
bl		3.3	49.1
"		1.9	50.5
b		1.0	51.4
y		0.2	52.2
ll		0.5	51.9
WL		0.7	52.0

TP 790 59.55 0.25 52.15

100' N. of Dumas

WL		2.7	56.7
bl		2.3	57.3
y		1.8	57.8
b		3.1	56.5
y		5.1	54.5
ll		7.0	52.6
EL		8.8	50.8

150' N. of Dumas

EL		8.7	50.9
bl		7.0	52.6
y		5.3	54.3
b		3.3	56.3
y		2.0	57.6
ll		1.6	58.0
WL		1.2	58.3
Bm		6.75	52.80

Dist. in feet
100' or Dumas

5955

200' N. = S. of Elliott St (70')

WL		2.5	57.1
bl		3.4	56.2
y		4.5	55.1
b		5.7	53.9
ll		7.6	52.0
bl		8.7	50.9
EL		10.4	49.2

S. side of Elliott St

EL		10.6	49.0
		8.6	51.0
		7.8	51.8
b		6.5	53.1
y		5.2	54.4
bl		4.1	55.5
WL		2.7	56.9

S. side of Elliott

WL		3.0	56.6
bl		4.6	55.0
y		5.8	53.8
b		6.6	53.0
y		8.0	51.6
bl		8.8	50.8
EL		11.1	48.5

11

Center of Elliott

Ed	11.6	48.0
hh	9.7	49.9
"	8.7	50.9
b	7.4	52.2
y	6.0	53.6
ll	4.8	54.8
Wl	3.3	56.3

N 1/4 of Elliott

Wl	3.5	56.1
hh	5.8	53.8
y	7.3	52.3
b	8.0	51.6
y	9.1	50.5
ll	10.0	49.6
Ed	11.6	48.0

N 1/2 of Elliott

Ed	12.2	47.4
ll	10.7	48.9
y	9.4	50.2
b	8.4	51.2
y	7.3	52.3
hh	5.4	54.2
Wl	4.0	55.6

N 1/2 Elliott

Wl	4.7	54.9
ll	6.2	53.4
y	7.4	52.2
b	8.5	51.1
y	9.7	49.9
ll	10.8	48.8
Ed	12.5	47.1

50' N of Elliott

Ed	11.7	47.9
ll	10.8	48.8
"	9.4	50.2
b	7.7	51.9
y	6.1	53.5
ll	5.1	54.5
Wl	4.1	55.5

TP	2.27 5799	3.83	54.2
"	1000' N of Elliott		
Ed		1.0	57.0
ll		2.0	56.0
y		3.5	54.5
b		5.2	52.8
y		6.9	51.1
ll		8.0	50.0
Ed		9.3	48.7

150 n of Elliott

El	100	48.0
bl	87	49.8
y	7.1	50.9
b	5.3	52.7
v	3.1	54.9
bl	2.0	56.0
wh	1.2	56.8

200 n = Schmidt Freeman (75)

wh	1.8	56.2
bl	2.2	54.8
y	3.8	53.0
b	6.6	51.4
y	8.5	51.5
bl	10.0	48.0
El	12.0	46.0

Sbt of Freeman

El	12.6	45.4
bl	11.0	47.0
y	9.0	49.0
b	7.5	50.5
y	5.4	52.6
bl	3.5	54.5
wh	2.0	56.0

S 1/4 of Freeman

wh	27	55.3
bl	39	54.1
y	55	52.5
b	7.4	50.6
v	9.0	49.0
bl	10.6	47.4
El	12.7	45.3

Center Freeman

El	130	45.0
bl	114	46.6
y	94	48.6
b	81	49.9
v	63	51.7
bl	47	53.6
wh	34	54.6

N 1/4 of Freeman

wh	2.8	55.2
bl	3.7	54.3
y	5.8	52.2
b	8.7	49.3
v	9.7	48.3
bl	11.0	47.0
El	13.0	45.0
wh	7.34	56.43
		8.90
		49.12
		47.09
		49.1

7 lb of Freeman

Ed	11.6	44.8
bl	10.2	46.2
"	8.5	47.9
b	7.1	49.3
"	5.0	51.4
bl	2.7	53.7
Wd	1.3	55.1

7 lb of Freeman

Wd	1.9	54.5
bl	2.6	53.8
"	4.7	51.7
b	6.7	49.7
"	8.2	48.2
bl	10.7	45.7
Ed	12.0	44.4

50' n of

Freeman

Ed	10.6	45.8
bl	9.5	46.8
"	7.6	48.8
bl	5.8	50.6
"	4.3	52.1
bl	3.4	53.0
Wd	1.7	54.7

100' n of Freeman POSTED

Wd	2.6	53.8
bl	3.3	53.1
"	5.2	51.2
b	6.6	49.8
"	8.2	48.2
bl	9.9	46.5
Ed	11.0	45.4

150' n of Freeman

Ed	12.0	44.4
bl	10.8	45.6
"	9.5	46.9
b	7.6	48.8
"	6.6	49.8
bl	4.7	51.7
Wd	2.5	53.9

200' n = 52 Goldsmith (70')

Wd	6.6	49.8
bl	7.9	48.5
"	8.8	47.6
b	9.9	46.5
"	10.9	45.5
bl	12.2	44.2
Ed	13.2	43.2

S 1/4 of Goldsmith 1st

Ed	133	43.1
bl	122	44.2
y	107	45.0
b	100	46.4
y	90	47.4
bl	85	47.9
wd	72	49.2

S 1/4 of Goldsmith 2nd

wd	78	48.6
bl	89	47.5
y	97	46.5
b	107	45.7
y	118	44.6
bl	124	44.0
Ed	137	42.7

Center of Goldsmith 1st

Ed	138	42.6
bl	125	43.9
y	115	44.9
b	107	45.5
y	100	46.4
bl	92	47.2
wd	79	48.5

N 1/4 of Goldsmith 1st

wd	80	48.4
bl	92	47.2
y	102	46.2
b	111	45.3
y	122	44.2
bl	129	43.5
Ed	135	42.9

N 1/4 of Goldsmith 2nd

Ed	139	42.5
bl	130	41.4
y	120	44.4
b	111	45.3
y	104	46.0
bl	94	47.0
wd	83	48.1

N 1/2 of Goldsmith

wd	87	47.7
bl	99	46.5
y	108	45.6
b	117	44.7
y	126	43.8
bl	133	43.1
Ed	143	42.1

Sum 243 50.13 878 47.70

margin
add

35' n of Goldsmith

Ed	13.5	86.6
bl	10.3	39.8
"	9.0	41.1
Ed of water Pit	6.8	43.3
b	7.2	42.9
"	5.5	44.6
bl	4.3	45.8
W2	3.0	47.1

50' n of Goldsmith

W2	39	46.2
bl	56	44.5
"	74	42.7
b	89	41.2
"	11.5	38.6
bl	130	37.1
Ed	10.3	39.8

75' n of Goldsmith

Ed	8.0	42.1
bl	7.8	42.3
"	8.1	42.0
b	8.2	41.9
"	8.0	41.0
bl	11.2	38.9
W2	9.0	41.1

100' n of Goldsmith

W2	61	44.0
bl	55	44.9
"	48	45.3
b	37	46.4
Ed of water Pit	4.5	45.6
"	3.3	46.8
bl	26	47.5
Ed	3.3	46.8

125' n of Goldsmith

W2	11.80	60.9	184	48.29
Ed			19.6	50.5
bl			9.0	51.7
"			8.8	51.3
b			8.6	51.5
"			9.0	51.1
bl			10.0	50.1
W2			11.7	48.4

150' n of Goldsmith

W2	68	53.3
bl	58	54.3
"	48	55.3
b	49	55.2
"	58	54.3
bl	72	52.9
Ed	83	51.8

200' n = Sd of Homer / 707

Ed	5.9	54.2
bl	4.0	56.1
4	3.0	57.1
b	2.5	57.6
4	2.7	57.4
bl	2.2	56.9
Wt	4.4	55.7

S 1/4 of Homer

Wt	4.1	56.0
bl	3.1	57.0
4	2.2	57.9
b	2.2	57.9
4	2.4	57.7
bl	2.4	56.7
Ed	5.2	54.9

S 1/4 of Homer

Ed	4.7	55.4
bl	3.1	57.0
4	2.2	57.9
b	1.5	58.6
4	1.5	58.6
bl	2.0	58.1
Wt	3.5	56.6

Center of Homer

Wt	3.2	56.9
bl	1.6	58.5
4	1.1	59.0
b	1.1	59.0
4	1.5	58.6
bl	2.3	57.8
Ed	2.6	56.5

N 1/4 of Homer

Ed	2.8	57.3
bl	1.6	58.5
4	1.0	59.1
b	0.7	59.4
4	1.3	58.8
bl	1.8	58.3
Wt	2.6	57.5

N 1/4 of Homer

Wt	2.2	57.9
bl	1.8	58.3
4	1.0	59.1
b	0.4	59.7
4	0.4	59.7
bl	1.1	59.0
Ed	2.0	58.1

6009

N. line of Hornum

Ed	14	58.7
bl	05	59.6
4	00	60.1
6	+0.2	60.3
4	08	59.3
bl	15	58.6
W1	18	58.3

T.P.B.M.

1144

7015

138

58.71

www.24
78 2 p.p.m.

50'

N. of Hornum

W1	92	61.0
bl	84	61.8
4	77	62.5
6	72	62.9
4	64	63.8
bl	67	63.5
Ed	76	62.6

100' N. of Hornum

Ed	51	65.1
bl	41	66.1
4	36	66.6
6	38	66.4
4	56	64.6
bl	63	63.9
W1	66	63.6

7015

150' N. of Hornum

W1	43	65.9
bl	38	66.4
4	34	66.8
6	26	67.6
4	23	67.9
bl	27	67.5
Ed	36	66.6

200' N. = S. of

Ibsen

35'

(70')

Ed	42	66.0
bl	31	67.1
4	28	67.4
6	30	67.2
4	32	66.9
bl	32	67.0
W1	32	67.0

S. of Ibsen

W1	28	67.4
bl	32	67.0
4	37	66.5
6	36	66.6
4	32	67.0
bl	32	67.0
Ed	43	65.9

S 1/4 of Ibsen 11

El		4.6	65.6
bl		3.7	66.5
y		3.0	67.2
b		3.7	66.5
y		3.8	66.4
bl		3.6	66.6
W1		3.4	66.8

Center of Ibsen

W1		4.3	65.9
bl		4.0	66.2
y		4.1	66.1
b		3.8	66.4
y		3.1	67.1
bl		3.6	66.6
El		4.8	65.4
TP	2.74	67.64	5.45
			64.70

N 1/4 of Ibsen

El		2.7	64.9
bl		1.8	65.8
y		1.3	66.3
b		1.9	65.7
y		2.0	65.6
bl		2.2	65.4
W1		2.6	65.0

N 1/4 of Ibsen

W1		3.0	64.6
bl		2.6	65.0
y		2.5	65.1
b		2.2	65.4
y		2.1	65.5
bl		2.0	65.6
El		2.8	64.8

Center of Ibsen

El		3.1	64.5
bl		2.6	65.0
y		2.5	65.1
b		2.6	65.0
y		2.8	64.8
bl		2.4	65.2
W1		3.0	64.6

50' n of Ibsen

W1		6.0	61.6
bl		5.6	62.0
y		4.8	62.8
b		4.4	63.2
y		4.8	62.8
bl		4.8	62.8
El		5.3	62.3

5641

N 1/4 of James

WL	37	52.7
bl	52	51.2
"	65	49.9
b	81	48.3
"	98	46.6

N 1/2 of James

WL	47	57.7
bl	59	50.5
"	75	48.9
b	85	49.9
"	100	46.4

N 1/2 James

WL	56	50.8
bl	70	49.4
"	81	48.3
b	93	47.1
"	112	45.2

TP EL of 4329 4826 1254 4377

S 1/4 of James

EL	53	49.0
bl	70	41.3

Center James

EL	103	68.0
bl	70	41.3

N 1/4 James

EL	110	67.0
bl	79	40.4

4826

N 1/2 of James

EL	116	36.7
bl	80	40.3

N 1/2 of James

EL	116	36.7
bl	87	39.6

Bm

71.60 36.66 Bm

50' N of James

EL	130	35.3
bl	101	38.2
"	74	40.9

b

54 42.9

"

40 44.3

bl

29 45.9

WL

14 46.9

75' N of James

WL	51	43.2
bl	59	42.4
"	66	41.7
b	81	40.2
"	100	38.3
bl	125	35.8

100' N of James

WL	83	40.0
bl	96	38.7
"	114	36.9
b	133	35.0

POSTED

4826				4193			
TP	587	4134	1279	3547	200' n = S 2/4 Kingsley (176)	374	
EL	75'	n of James	8.8	32.5	W2	42	37.0
EL	100'	n of James	13.4	27.9	bl	33	38.0
bl			11.7	30.1	4	24	38.9
14			8.6	32.7	bl	22	39.1
	125'	n of James			4	20	39.3
W2			5.1	36.2	bl	12	40.1
bl			6.8	34.5	TP	04	40.9
4			8.9	32.4	11.29 5207	40.88	40.88
6			10.5	30.8	S 2/4		40.88
4			12.2	29.1	Kingsley		40.88
bl			10.2	28.1	EL	9.8	42.3
EL			13.0	28.3	bl	10.1	42.0
	150'	n			4	10.3	41.8
EL			9.0	32.3	EL of water side	8.5	43.6
bl			9.2	32.1	bl	10.4	41.7
4			9.5	31.8	4	10.7	41.4
6			10.8	31.3	bl	10.9	41.2
4			11.0	30.3	W2	11.6	41.5
bl			11.0	30.3	S 1/4 of Kingsley		
W2			10.7	30.6	W2	8.7	43.4
					bl	8.2	43.9
					4	8.1	44.0
					bl	8.3	43.8
					4	8.0	44.1
					bl	8.4	43.7
					EL	8.4	43.7

52.07

center of Kingsley		
EL	70	45.1
lb	68	45.3
y	66	45.5
b	65	45.6
y	63	45.8
lb	64	45.7
ws	68	45.3
N 1/4 of Kingsley		
ws	49	47.2
lb	47	47.4
y	44	47.5
b	49	47.2
y	54	46.7
lb	58	46.3
EL	62	45.8
N 1/2 of Kingsley		
EL	57	46.4
lb	50	47.1
y	46	47.5
b	41	48.0
y	37	48.4
lb	37	48.4
ws	38	48.3

52.07

N line of Kingsley		
ws	27	49.4
lb	26	49.5
y	25	49.5
b	33	48.8
y	34	48.7
lb	45	47.6
EL	58	46.3
50' N of Kingsley		
EL	70	45.1
lb	55	46.6
y	36	48.5
b	22	49.9
y	89	51.7
lb	00	52.1
TP	0.65 5270	0.82
ws		06
		52.1
100' N of Kingsley		
ws	10	51.7
lb	18	50.9
y	28	49.9
b	39	48.8
y	61	46.6
lb	85	44.2
EL	105	42.2
EL		

	150'	Ref	Rings	Log
Ed			12.4	40.3
lt			10.2	42.5
4			8.3	44.4
6			5.8	46.4
4			2.6	49.1
lt			2.4	50.3
W2			2.0	50.7
	200'	Ref	dykes	
W2			2.2	50.5
lt			3.7	49.0
4			4.9	47.8
6			6.3	46.4
4			8.7	44.3
lt			10.8	41.9
Ed			10.3	39.4
TP Bm			2.1	50.8

with SW bar
28

1-5
 Cross-section of Lytton Sl 70'
 Tide to the End

(Plotted profile of this)
 Aug 2, 07

257 347 490 Blk 407

W line of Tide Sl

2L		54	- 1.9
bl		51	- 1.6
y		52	- 1.7
b		46	- 1.1
y		51	- 1.6
bl		48	- 1.3
sl		46	- 1.1
50' W of Tide Sl			
sl		42	- 0.8
bl		44	- 0.9
y		45	- 1.0
b		47	- 1.2
y		46	- 1.1
bl		47	- 1.2
sl		47	- 1.2
100' W of Tide Sl			
2L		50	- 1.5
bl		50	- 1.5
y		49	- 1.4
b		49	- 1.4
y		47	- 1.2
bl		48	- 1.3
sl		49	- 1.4

347

25

150' W of Tide Sl

sl	48	- 1.3
bl	48	- 1.3
y	49	- 1.4
b	49	- 1.4
y	50	- 1.5
bl	50	- 1.5
sl	50	- 1.5
200' W of Tide Sl		
sl	51	- 1.6
bl	50	- 1.5
y	50	- 1.5
b	48	- 1.3
y	48	- 1.3
bl	47	- 1.2
sl	46	- 1.1
250' W of Tide Sl		
sl	38	- 0.3
bl	38	- 0.3
y	41	- 0.6
b	42	- 0.7
y	46	- 1.1
bl	47	- 1.2
sl	50	- 1.5

300' 90" - E of Shaft 70'

22			47	-1.2
bl			44	-0.9
4			43	-0.8
6			41	-0.6
4			39	-0.4
bl			32	+0.3
SL			31	+0.4
TP	8.05	8.42	3.10	0.37
	E	66 76	Shaft 70'	50' from Shaft 6
SL			78	+0.6
bl			80	0.4
4			82	0.2
6			84	0.0
4			91	-0.7
bl			94	-1.0
22			96	-1.2
				2 1/4 of Shaft 70'
22			96	-1.2
bl			91	-0.7
4			89	-0.5
6			82	+0.1
4			81	0.3
bl			78	0.6
SL			76	0.8

Center of Shaft 70'

SL			73	1.1
bl			76	0.8
4			78	0.6
6			80	0.4
4			84	0.0
bl			88	-0.4
22			94	-1.0
				W 1/4 of Shaft 70'
22			89	-0.5
bl			86	-0.2
4			84	0.0
6			80	+0.4
4			77	+0.7
bl			75	0.9
SL			71	1.1
				W 1/4 of Shaft 70'
SL			70	1.4
bl			73	1.1
4			75	0.9
6			78	0.6
4			81	0.3
bl			83	0.1
22			85	-0.1

W line of Shafter

22	8.5	- 0.4
bl	8.1	+ 0.3
"	7.9	0.5
l	7.8	0.6
"	7.4	1.0
bl	7.7	1.0
SL	6.9	1.5

50' w of Shafter

SL	6.1	2.3
bl	6.4	2.0
"	6.6	1.8
l	7.1	1.3
"	7.2	1.2
bl	7.5	0.9
22	8.0	0.4

70' w of Shafter

22	8.9	- 0.5
bl	8.8	- 0.4
"	8.7	- 0.3
l	8.0	+ 0.4
"	6.0	+ 2.4
bl	5.7	2.7
SL	5.2	3.2

90' w of Shafter

SL	4.9	3.5
bl	5.1	3.3
"	8.1	0.3
l	8.3	0.1
"	8.5	- 0.1
bl	6.8	+ 1.6
22	6.6	1.8

100' w of Shafter

22	5.9	2.5
bl	5.7	2.7
"	5.8	2.6
l	5.7	2.7
"	7.2	1.2
bl	7.7	0.7
SL	7.6	0.8

110' w of Shafter

SL	4.5	3.9
bl	4.8	3.6
"	5.0	3.4
l	5.3	3.1
"	5.4	3.0
bl	5.1	3.3
22	4.7	3.7

150' w of

Ad		Shofte	7.08	9.0
bl			0.3	8.1
y			1.0	7.4
l			1.5	6.9
y			1.7	6.7
bl			1.9	6.9
SA			2.1	6.3
TP	11.86	18.44	1.84	6.58

200' w of

Ad		Shofte	7.2	11.2
bl			7.0	11.4
y			6.7	11.7
l			6.0	12.4
y			5.7	13.0
bl			5.3	13.1
SA			5.0	13.4

250' w of

Ad		Shofte	4.4	14.0
bl			4.4	14.0
y			4.5	13.9
l			4.6	13.8
y			4.7	13.7
bl			4.7	13.7
SA			4.5	13.9

300' w = Edmest Scott St (70')

SA	4.0	14.4
bl	4.0	14.4
y	4.0	14.4
l	4.2	14.2
y	4.1	14.3
bl	4.2	14.2
SA	4.3	14.1

E 1/4 of Scott

Ad	4.4	14.0
bl	4.3	14.1
y	4.3	14.1
l	4.2	14.2
y	4.1	14.3
bl	4.0	14.4
SA	3.9	14.5

E 1/4 of Scott

Ad	3.6	14.8
bl	3.5	14.9
y	3.4	14.0
l	3.3	15.1
y	3.6	14.8
bl	3.7	14.7
SA	3.8	14.8

Center of Scott

n2	38	14.6
bl	36	14.8
y	37	14.7
b	36	14.8
y	36	14.8
bl	34	15.0
sd	32	15.2

W'n of Scott

sd	31	15.3
bl	33	15.1
y	33	15.1
b	34	15.0
y	34	14.8
bl	37	14.7
n2	37	14.7

W. bl of Scott

n2	37	14.7
bl	35	14.9
y	35	14.9
b	35	14.9
y	34	15.0
bl	34	15.0
sd	33	15.1

W line of Scott

sd	27	15.7
bl	30	15.4
y	30	15.4
b	32	15.2
y	33	15.1
bl	37	14.7
n2	36	14.8

50' W of Scott

n2	21	16.3
bl	21	16.3
y	22	16.2
b	20	16.4
y	18	16.6
bl	16	16.8
sd	16	16.8

TP 1202 28.35 100' W of Scott

sd	111	17.23
sd	103	19.1
bl	101	19.3
y	102	19.2
b	108	18.6
y	113	18.1
bl	113	18.1
n2	113	18.1

	150'	web	Scatt	
rd			84	21.0
bl			82	21.2
y			80	21.4
b			78	21.6
y			77	21.7
bl			77	21.7
sd			77	22.0
	200'	web	Scatt	
sd			29	26.0
bl			35	25.9
y			35	25.9
b			28	25.6
y			40	25.4
bl			44	25.0
rd			56	24.8
TP	150'	3979	185	23.0
	250'	web	Scatt	
rd			100	29.8
bl			97	30.1
y			94	30.4
b			89	30.9
y			84	31.4
bl			80	31.8
sd			76	32.2

	300' W -	S. side of main st (100')	
sd		05	39.3
bl		07	39.1
y		09	38.9
b		11	38.7
y		17	38.1
bl		24	37.4
rd		30	36.8
TP	12.05-51.30	053	39.26
	E 1/4 of main st		
rd		12.1	39.2
bl		11.8	39.5
y		11.3	40.0
b		11.0	40.3
y		10.5	40.8
bl		10.2	41.1
sd		9.5	42.8
	E 1/4 of main st		
sd		7.6	43.7
bl		7.8	43.5
y		8.0	43.3
b		8.6	42.7
y		9.2	42.1
bl		9.6	41.7
rd		10.3	41.0

SE. side
main

Center of Main St

NL	83	43.0
bl	75	43.8
4	69	44.4
b	66	44.7
4	62	45.1
bl	59	45.4
SL	56	45.7
W 1/4 of Main St		
SL	36	47.7
bl	40	47.3
4	42	47.1
b	48	46.3
4	54	45.9
bl	57	45.4
NL	67	44.6
W 1/4 of Main St		
NL	57	45.6
bl	45	46.8
4	40	47.3
b	34	47.9
4	32	46.1
bl	28	48.5
SL	25	48.8

POSTED

W 1/4 of Main St

202 Dm	0.91	50.40
bl	11	50.2
4	1.1	50.2
b	1.5	49.8
4	2.1	49.2
bl	2.7	48.6
NL	4.3	47.0
710 ^{Bm}	0.91	50.40
12.44 6284		
50' road		
Main St		
SL	95	53.3
bl	100	52.8
4	102	52.6
b	107	52.1
4	112	51.6
bl	114	51.4
NL	118	51.0
100' road		
Main St		
NL	95	53.3
bl	97	53.4
4	92	53.6
b	90	53.8
4	89	53.9
bl	87	54.1
SL	87	54.1

150' W of Main St

ss	73	55.5
bl	76	55.2
"	78	55.0
l	77	55.1
"	76	55.2
bl	72	55.6
sd	72	55.6

200' W of Main St

sd	64	56.4
bl	63	56.5
"	60	56.8
l	60	56.8
"	59	56.9
bl	57	57.1
sd	55	57.3

250' W of Main St

sd	34	59.4
bl	39	58.9
"	37	59.1
l	55	59.3
"	39	58.9
bl	44	58.4
sd	47	58.1

300' W of E Main Locust St (70')

sd	52	59.6
bl	47	60.1
"	45	60.3
l	28	60.0
"	23	60.5
bl	23	60.5
sd	20	60.8

5.51 66.44

E bl of

Locust

SE 4th Locust

sd	51	61.3
bl	62	60.2
l	64	60.0
"	60	60.4
"	59	60.5
bl	57	60.7
sd	65	59.9

8 1/2 of

Locust St

sd	59	60.5
bl	49	61.5
"	44	62.0
l	54	61.0
"	59	60.5
bl	58	60.6
sd	54	61.0

Center of Section 31

SL		43	62.1
bl		54	61.0
4		57	60.7
b		54	61.0
4		49	62.0
bl		42	62.2
SL		57	60.7
	W 1/4 of		Section
SL		55	60.9
bl		51	61.3
4		43	62.1
b		52	61.2
4		55	60.9
bl		49	61.5
SL		42	62.2
	W 1/2 of		Section 31
SL		47	61.7
bl		53	61.1
4		52	61.2
b		51	61.3
4		50	61.4
bl		53	61.1
SL		52	61.1

W 1/2 of Section 30

SL		50	61.4
bl		48	61.6
4		47	61.7
b		48	61.6
4		46	61.8
bl		48	61.6
SL		48	61.6
	50' W of		Section
SL		44	62.0
bl		40	62.4
4		31	63.3
b		28	63.6
4		35	62.9
bl		40	62.4
SL		39	62.5
	100' W of		Section
SL		30	63.4
bl		37	62.7
4		40	62.4
b		42	62.2
4		44	62.0
bl		46	61.8
SL		48	61.6

	150'	W of	Locust	
S2			55	60.9
bl			55	60.9
4			57	61.2
6			42	62.2
4			24	63.0
bl			32	63.2
R2			29	63.5
	200'	W of	Locust	
R2			28	62.6
bl			37	62.7
4			42	62.2
6			50	61.4
4			57	60.7
bl			59	60.5
S2			64	60.0
	250'	W of	Locust	
S2			49	61.5
bl			49	61.5
4			44	62.0
6			49	62.0
4			38	62.6
bl			36	62.8
R2			28	63.6

	300'	W =	E2 of	elm	(709)	
R2				11	65.3	
bl				19	64.5	
4				22	64.2	
6				26	63.8	
4				31	63.3	
bl				37	62.7	
S2				45	61.9	
TP	1070	72.67		450	61.94	58' out elm
		E 1/4 of		elm	st	
S2				105	62.1	
bl				98	62.8	
4				94	63.2	
6				90	63.6	
4				85	64.1	
bl				79	64.7	
R2				74	65.2	
		E 1/4 of		elm	st	
R2				79	64.7	
bl				78	64.8	
4				84	64.2	
6				86	64.0	
4				94	63.2	
bl				99	62.7	
S2				103	62.3	

center of Elm

SL	10.1	62.5
bl	9.9	62.7
y	9.3	63.3
b	8.9	63.7
y	8.3	64.3
bl	8.2	64.4
rd	8.1	64.5
W 1/4 of Elm		
rd	7.3	65.3
bl	8.0	64.6
y	8.4	64.2
b	8.5	64.1
y	8.8	63.8
bl	9.2	63.4
SL	9.5	63.1
W 1/4 of Elm		
SL	8.9	63.7
bl	8.6	64.0
y	8.5	64.1
y	8.5	64.1
y	7.9	64.7
bl	6.6	66.0
rd	6.9	65.7

POSTED

W side of Elm

rd	63	66.3
bl	60	66.6
y	68	65.8
b	79	64.7
y	87	63.9
bl	84	64.2
SL	84	64.2
50' W. of Elm		
SL	70	65.6
bl	65	66.1
y	73	65.3
b	73	65.3
y	70	65.6
bl	67	65.9
rd	60	66.6
100' W. of Elm		
rd	54	67.2
bl	56	67.0
y	59	66.7
y	61	66.5
y	63	66.3
bl	62	66.4
SL	64	66.2

	150'	W of	Elm	
S2			48	67.8
bl			4.1	68.5
4			4.6	68.0
6			3.9	68.7
4			4.2	68.4
bl			4.4	68.0
nl			5.0	67.6
	200'	W of	Elm	
nl			10.5	67.1
bl			8.5	64.1
4			6.2	66.4
8			5.9	67.6
4			4.7	68.2
bl			3.6	69.0
S2			3.2	69.4
	225'	W of	Elm	
S2			4.5	68.1
bl			4.8	67.8
4			4.8	67.8
6			5.2	67.4
4			5.7	66.9
bl			6.2	66.4
nl			6.6	66.0

	262'	W =	Rueckle	Line
nl			6.9	65.7
bl			6.5	66.1
4			6.2	66.4
6			5.5	67.1
4			4.8	67.8
bl			4.0	68.3
S2			3.6	69.0

cross-section - of Rosecrans St
In Roseville. 100' wide

Lytton North to Pueblo line

	0.39	50.88	50.49	3m
				North line of Lytton
nrh			5.7	472
bl			5.7	457
14			6.7	447
b			7.8	431
y			9.8	411
bl			11.6	393
EL			14.5	366
	50'	n w		Lytton
nrh			6.0	449
bl			7.5	434
y			8.7	422
l			10.3	406
14			12.0	389
7P	4.25	4.507	12.04	3884
bl			6.0	371
EA			8.4	347
	100'	n w		Lytton
EL			10.1	330
bl			7.7	354
y			5.5	376
b			4.4	387
y			2.5	406
bl			1.4	417
nrh			0.0	431

150' n w Lytton

nrh	13	141.8
bl	31	400
y	5.1	380
b	7.2	359
y	8.5	346
bl	10.9	331
EL	11.8	313

200' n = S line of Meredith St

EL	13.8	293
bl	11.8	213
y	9.7	334
b	7.6	355
y	5.8	373
bl	2.7	394
EL	1.3	418

S line of M

nrh	1.8	413
bl	3.9	392
y	6.1	370
b	7.9	352
y	10.0	331
bl	12.2	309
EL	14.0	291

S	1/4 of m	m	
EL		14.3	288
CL		12.2	309
4		10.4	327
6		7.9	352
4		5.6	375
6		4.1	390
W2		1.9	412
	center of	Meredith st	
W2		2.0	411
U		4.3	388
4		6.5	366
6		8.3	348
4		10.2	328
6		12.2	308
CL		14.2	289
	2 1/4 of m		
EL		14.2	289
CL		12.1	310
4		10.3	328
6		8.3	348
4		6.3	368
6		4.3	388
W2		2.2	409

1/4 of m	m	
W2	2.5	40.6
6	4.6	38.5
4	6.8	36.3
6	8.5	34.6
4	10.1	33.0
6	12.5	30.6
TP	7.78	38.97
CL	10.90	28.19
	11.0	32.1
	center of	Meredith st
CL	11.0	29.0
6	9.2	30.8
4	7.3	32.7
6	5.3	34.7
4	3.2	36.7
6	1.5	38.5
W2	2.0	40.2
	50' 2 of	m
W2	0.1	39.9
6	2.2	37.8
4	4.0	36.0
6	5.6	34.4
4	7.7	32.3
6	9.5	30.5
CL	11.5	28.5

	100'	n of	m	
cl			12.2	277
bl			10.5	295
y			8.5	315
l			6.4	336
y			4.7	358
bl			2.6	374
W2			0.5	395
	150'	n of	m	
W2			1.2	388
bl			2.2	368
y			5.0	350
l			7.1	329
y			8.8	312
bl			11.0	290
cl			12.7	271
	200'	n of	m	
cl			19.9	271
bl			11.3	287
y			9.2	308
l			7.2	328
y			5.7	343
bl			4.0	360
W2			1.8	382

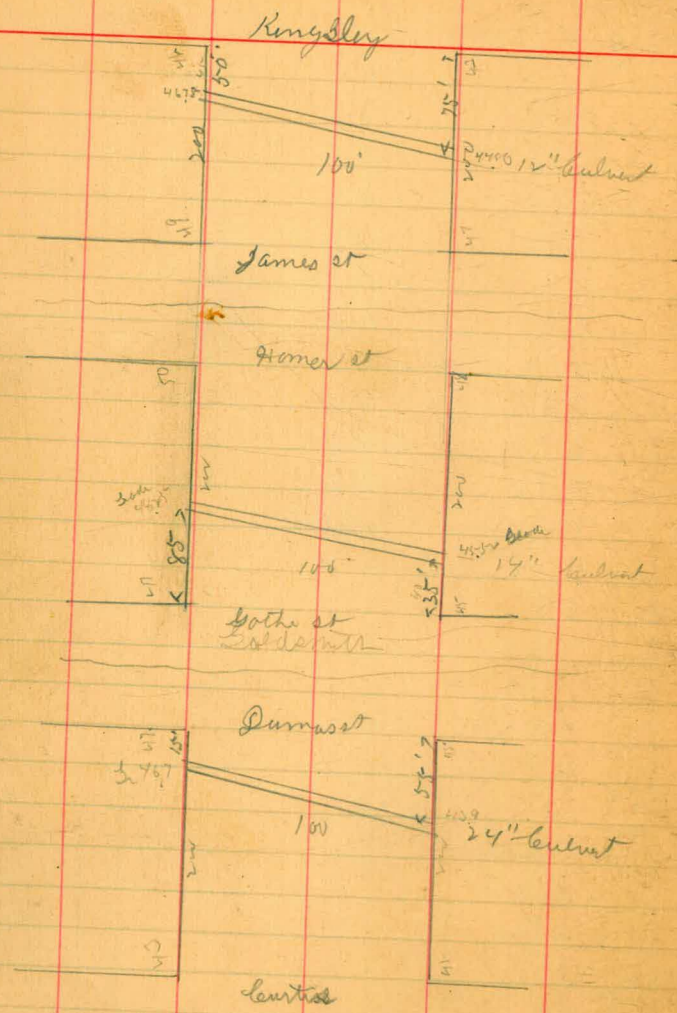
208' n = Rubble Line across center

W2	17	38.3
bl	4.0	36.0
y	5.6	34.4
l	7.4	32.6
y	9.4	30.6
bl	11.2	28.8
cl	13.0	27.0

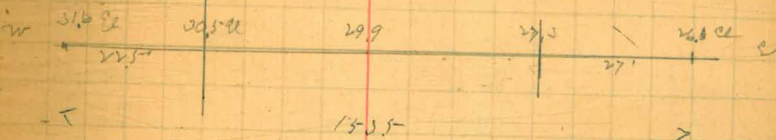
175' n = claimed to be old Rubble

cl	13.0	27.0
bl	11.1	28.9
y	8.9	31.1
l	6.8	33.1
y	5.0	35.0
bl	3.4	36.6
W2	1.0	39.0

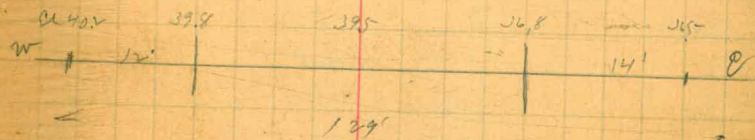
Location of culverts on
Rosineans St



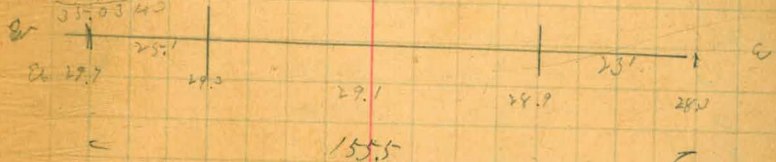
36.62 Bm
37.07 H.S.



47.83 Bm
48.17 H.S.



42.04 Bm
43.22
40.00
32.57
31.14
35.03 H.S.



Sections 5 1/2 K. S. from 6th to 7th

9/7/07
Hatch
Doman
William.

POSTED

By 5 th K. 528	1274	776
T.P.	3.50	14.61
W h	7 th	1.63
		11.11
Curb		4.09
Gutter		4.71
2'		4.81
1/4		4.47
5' from Rail		4.06
Rail		3.94
	50' W	
Rail		4.28
2'		4.38
1/4		4.73
2'		5.20
Gutter		5.08
Curb		4.43
	40' W	
Curb		4.79
Gutter		5.44
2'		5.55
1/4		5.09
2'		4.72
Rail		4.61
	60' W	
Rail		4.98
2'		5.05
1/4		5.45
2'		5.93

POSTED

41

Gutter		5.80
Curb		5.18
	80' W	
Curb		5.52
Gutter		6.18
2'		6.29
1/4		5.76
2'		5.43
Rail		5.33
	100' W	
Rail		5.70
2'		5.81
1/4		6.15
2'		6.65
Gutter		6.58
Curb		5.85
	120' W	
Curb		6.23
Gutter		6.96
2'		7.00
1/4		6.48
2'		6.13
Rail		6.06
	140' W	
Rail		6.39
2'		6.50
1/4		7.09
2'		7.20

POSTED

	146'	
Gutter		7.31
curb.		6.56
	160' W	
curb		6.93
Gutter		7.44
2'	(Scales)	7.20
1/4	"	7.18
2'	"	6.79
Rail		6.73
	180' W	
Rail		7.10
2'		7.15
1/4		7.48
2'		7.86
Gutter		7.90
curb.		7.31
	200' W = 1-1 6 1/2	
curb		7.64
Gutter		8.15
2'		8.05
1/4		7.75
2'		7.50
Rail.		7.45

BM NE 7¹/₄ TK 7¹/₄ - K - 296 11.65

Profile Levels over Robinson Ave

10th to Park Boulevard

$\frac{10}{15}$ } $\frac{10}{15}$ } $\frac{10}{15}$ }
 07 } $\frac{10}{15}$ }
 07 } $\frac{10}{15}$ }

Sta	South	ctr	North	Sta	South	Center	North
	5.58	288.32		282.74-544			
EL 10th	6.4	281.9	6.1	282.1	57	282.6	250 East Pk. 2.2 291.7 2.6 291.3 2.2 291.7
25 E "	5.4	282.9	5.7	282.6	52	283.1	300 " " 2.3 291.6 1.9 292.0 1.5 291.4
50 " "	6.2	282.1	5.2	283.1	49	283.4	350 " " 2.7 291.2 2.0 291.9 1.1 292.7
75 " "	4.2	284.1	4.4	283.9	46	283.7	400 " " 2.0 291.9 2.2 291.7 0.9 293.0
100 " "	4.7	283.6	4.5	283.8	36	284.7	450 " " 1.6 292.3 1.9 292.0 1.2 292.7
125 " "	3.9	284.4	3.4	284.9	35	284.8	500 " " 1.1 292.8 1.0 292.9 0.3 293.6
150 " "	3.5	284.8	3.0	285.3	2.9	285.4	T.P. 4.47 297.53 0.86 293.06
175 " "	3.3	285.0	3.2	285.1	2.2	286.1	550 " " 4.3 293.2 3.9 293.6 3.3 294.2
200 " "	3.2	285.1	2.8	285.5	3.5	284.8	600 W.L. Pk 3.6 293.9 2.9 294.6 2.5 295.0
250 " "	3.2	285.1	3.6	284.7	3.1	285.2	400 Cr " 2.6 294.9 2.3 295.2 2.1 295.4
T.P.	8.17	293.92	2.57	285.75			450 E.L. " 2.3 295.2 2.3 295.2 2.2 295.1
300 " "	8.8	285.1	8.8	285.1	8.4	285.0	25 E of " 2.4 295.1 2.6 294.9 2.4 295.1
350 " "	8.1	285.8	8.2	285.7	7.4	286.5	50 " " 2.9 294.6 3.0 294.5 3.2 294.3
400 " "	7.5	286.4	7.7	286.2	7.3	286.6	75 " " 3.4 294.1 3.8 293.7 3.2 294.3
450 " "	7.3	286.6	7.2	286.7	6.3	287.6	100 " " 3.8 293.7 4.3 293.2 3.6 293.9
480 " W.L. Pk	7.1	286.8	6.9	287.0	6.0	287.9	125 " " 4.2 293.3 6.6 290.9 5.2 292.3
Ch. Pk. rd + 40	7.1	286.8	6.0	287.9	5.3	288.6	150 " " 8.2 289.3 11.2 286.3 10.3 287.2
EL " + 80 + 0	6.2	287.7	5.5	288.4	4.8	289.1	T.P. 0.70 285.33 12.90 284.63
25 East Vint	5.8	288.1	5.1	288.8	4.7	289.2	175 " " 4.3 281.0 7.4 277.9 7.0 278.3
50 " "	5.5	288.4	5.1	288.8	4.6	289.3	T.P. 3.68 279.26 11.75 273.58
75 " "	5.0	286.9	4.8	289.1	4.2	289.7	198 " " 5.7 271.6
100 " "	4.9	289.0	4.8	289.1	3.7	290.2	700 " " 6.0 271.3 8.0 269.3 7.6 269.7
125 " "	3.7	290.2	3.7	290.2	2.4	291.5	205 " " 9.1 268.2
150 " "	3.3	290.6	3.4	290.5	2.4	291.5	210 " " 9.2 268.1
175 " "	3.1	290.8	2.8	291.1	2.7	291.2	217 " " 11.6 265.7
200 " "	2.7	291.2	2.9	291.0	2.6	291.3	225 " " 12.0 265.3 10.7 266.6 2.2 275.1
							230 " " 12.9 264.4
							250 " " 6.0 - W.L. Albert St. 27 1.3
							T.P. 12.86 286.44 3.68 273.58

44

286.44

Robinson Avenue

44

Sta	South	Center	North	Sta.	South	Chr.	North
W.L. Albert St.		113	27.51	4.3	282.1		
140 Chr "	1.8	284.6					
T.P.	12.84	297.47	1.81		284.63		
25 E. + W.L.				7.9	287.6		
Chr Albert		7.0	290.5	5.9	291.6		
20 E of Chr "				2.9	294.6		
E.L. Albert	4.3	293.3	3.6		293.9		
15 E "	5.0	292.5	3.9		293.6		
30 " "	3.5	294.0	3.6		293.9		
50 " "	3.5	294.0	2.1		295.4		
T.P.	7.86	303.69	1.64		295.8		
75 " "	9.2	294.5	1.6		295.1		
100 " "	9.3	294.4	1.9		294.8		
115 " "	1.2	295.5	1.5		295.2		
130 " "	9.4	294.3	1.6		295.1		
150 " "	10.2	293.5	1.2		295.5		
175 " "	11.3	292.4	10.0		293.7		
200 " W.L. Herbert	9.6	294.1	1.7		295.0		
140 Chr	8.9	294.8	9.2		294.5		
100 E. Chr	8.6	295.1	1.1		295.6		
25 E "	7.6	296.1	7.2		296.5		
50 " "	6.8	296.9	5.9		297.8		
75 " "	6.3	297.4	4.5		299.2		
85 " "					5.3	298.4	
100 " "					3.9	299.8	
110.5 " Alley	4.7	299.0	4.7		299.7		
					3.9	299.8	
					4.3	282.1	
					4.5	299.2	
					2.8	298.9	
					4.8	298.9	
					4.7	299.0	
					2.54	298.3	
					7.9	295.8	
					0.65	291.81	
					1.7	290.1	
					1.5	290.3	
					2.9	289.9	
					3.6	288.2	
					5.4	286.4	
					3.0	288.8	
					8.7	283.1	
					12.8	279.0	
					12.8	279.0	
					12.3	279.5	
					10.8	281.0	
					0.47	279.75	
					9.9	269.9	
					9.7	270.1	
					6.0	273.8	
					8.0	271.8	
					10.8	269.0	
					6.53	275.30	
					9.5	265.7	
					13.5	261.7	
					6.8	268.4	
					12.0	263.2	
					10.7	264.5	

Robinson Ave

27520

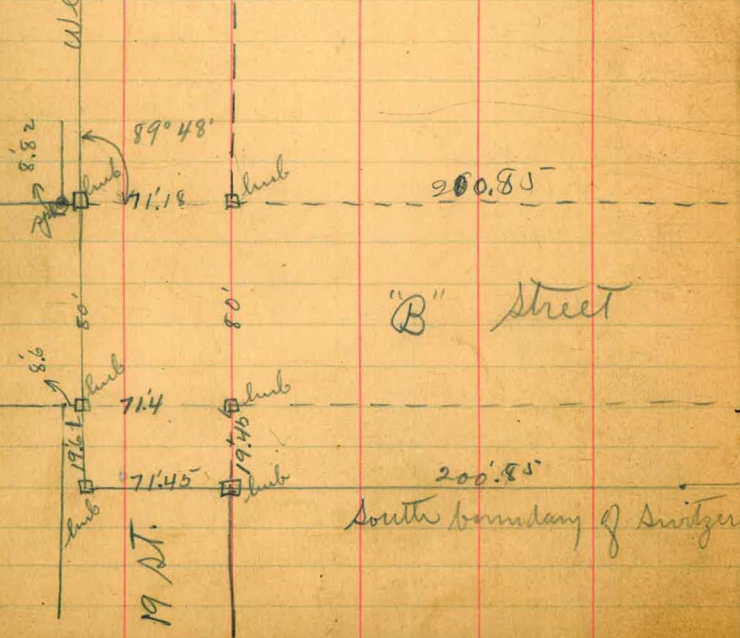
Sta	South	Center	North
146 E. Ch. St.	8.7	266.5	9.6 265.6
165 " "			9.9 265.3
177 " "	3.3	271.9	5.3 269.9 5.6 269.6
200 " "	2.8	272.4	1.1 274.1
215 " "	2.5	272.7	
230 " "	3.3	271.9	
250 " "	0.5	274.7	
T.P.	12.74	287.61	0.33 274.87
200			10.7 276.9
215 " "		11.6	276.0 6.9 280.7
230 " "		10.0	277.6 3.3 284.3
250 " "		8.3	279.3
275 " "	6.7	280.9	3.9 283.7
T.P.	12.90	299.85	0.66 286.95
250 " "			11.6 288.3
275 " "			8.8 291.1
300 " "	11.9	288.0	4.7 291.2 6.3 293.6
310 " "	7.9	292.0	
325 " "	7.5	292.1	6.2 293.7 5.2 294.7
330 " "	4.6	295.3	
350 " "	4.2	295.7	4.1 295.8 3.7 296.2
375 " "	2.0	297.9	2.8 297.1 2.4 297.5
408 (2 on south) ^{St. line}	1.1	298.8	1.3 298.6 0.9 299.0
T.P.	78.2	306.73	0.94 298.91
449 " = St. line		6.6	300.1
4906 " = N.L. Park Blvd. (West side)			3.6 303.1

Survey for "B" Street through Switzer tract

Dec. 23 1907
 Gluhills
 Evans 46
 Barber

West boundary Switzer's tract

POSTED



East boundary of Switzer's tract

POSTED



Crosssections
Falcon St. from -
N.L. Gretti to N.L. Broadway

B.M.	0.7	269.71	269.54	Tel. Pole Goldfinch Gretti
		N.L. Gretti St.		
W		4.9	264.8	
cb		4.8	264.9	
1/2		4.7	265.0	
c		4.6	265.1 x	
1/2		4.7	265.0	
cb		4.6	265.1	
E		3.7	266.0	
	50' N			
E		3.6	266.1	
cb		5.0	264.7	
1/2		5.3	264.4	
c		5.4	264.3 x	
1/2		5.7	264.0	
cb		5.8	263.9	
W		5.7	264.0	
	100' N			
W		6.5	263.2	
cb		6.6	263.1	
1/2		6.1	263.6	
c		5.8	263.9 x	
1/2		5.6	264.1	
cb		4.6	265.1	
E		3.5	266.2	

1/8/08 Hatch
Williams
Emeris

47

	269.71	
	125' N	
E	3.5	266.2
cb	4.2	265.3
1/2	5.6	264.1
c	6.3	263.4 x
1/2	6.4	263.3
cb	6.2	263.5
W	6.8	262.9
	150' N	
W	10.8	258.9
cb	7.6	262.1
1/2	6.9	262.8
c	6.4	263.3 x
1/2	5.9	263.8
cb	5.0	264.7
E	3.6	266.1
	175' N	
E	3.8	265.9
cb	4.9	264.8
1/2	4.0	265.7
c	4.1	265.6 x
1/2	6.1	263.6
cb	9.0	260.7
W	14.0	255.7

POSTED

POSTED

	269.71		
	200' N of Gotti		
W cb.	13.0	256.7	
1/4	10.0	259.7	
C	7.7	262.0*	
1/2	5.9	263.8	
cb	4.5	265.4	
E	3.9	265.8	
	225' N.		
E	3.5	266.2	
cb	5.3	264.4	
1/4	9.0	260.7	
C	13.8	255.9*	
	250' N.		
E	5.8	263.9	
cb.	12.2	257.5	
	275' N.		
E	7.6	262.1	
cb.	14.4	255.3	
	300' N. = Sh Lewis		
E	7.5	262.3	
cb.	13.5	256.2	
T.P.	1.32	258.97	12.06
	200' N.		257.65
W	8.7	250.3	
	225' N.		
W	16.5	242.5	
cb	12.5	246.5	

	258.97		
1/4	7.9	251.1	
	250' N.		
E 1/2	5.9	253.1	
C	11.0	248.0*	
1/4	14.0	245.0	
	275' N.		
E 1/2	9.8	249.2	
C	14.6	244.4*	
	300' N. = Sh Lewis		
E 1/2	3.4	255.6	
C	10.2	248.8*	
T.P.	0.82	247.59	12.20
	250' N.		246.77
W	12.4	235.2	
W cb.	7.5	240.1	
	275' N.		
W	17.6	230.0	
cb	13.7	234.2	
1/4	8.8	238.8	
	300' N. = Sh Lewis		
W 1/4	11.0	236.6	
cb	16.3	231.3	
T.P.	0.37	235.63	12.33
W	8.5	227.1	
	300' N. = Sh Lewis		
W	9.4	226.2	
cb.	4.6	231.0	
1/4	0.2	235.4	

23563

5 1/4 Lewis		
W 1/4	0.5	235.1
cb	4.9	230.7
W	11.3	224.3
Cr. Lewis		
W	12.4	223.2
cb	6.9	228.7
1/4	6.2	234.4
N 1/4 Lewis		
W 1/4	3.8	231.8
cb	7.8	227.8
W	13.3	222.3
N cb Lewis		
W	15.0	220.6
cb	9.8	225.8
1/4	5.3	230.3
N 1/2 Lewis		
W	16.4	219.2
cb	11.8	223.8
1/2	6.9	228.7
C	2.9	232.7
25' N of Lewis		
W 1/4	3.5	232.1
cb	8.3	227.3
W	14.7	220.9
30' N		
W	10.1	225.5
cb	4.5	231.1

23563

75' N of Lewis		
W	5.7	226.9
cb	3.2	232.4
100' N		
W	2.2	233.4
T.P.	13.03	247.60
	1.06	234.57
5 cb Lewis		
E 1/4	0.3	247.3
C	5.4	242.2*
5 1/4 Lewis		
C	6.4	241.2*
E 1/4	1.3	246.3
Cr Lewis		
E 1/4	2.3	245.3
C	7.5	240.1*
N 1/4 Lewis		
C	9.6	238.0*
E 1/4	4.0	243.6
N cb Lewis		
C	11.2	236.4*
E 1/4	6.2	241.4
N 1/2 Lewis		
E 1/4	8.6	239.0
cb	3.0	244.6
25' N of Lewis		
E cb	1.9	245.7
1/4	7.2	240.4
C	10.6	237.0*

	247.60		
	30' N of Lewis		
W 1/4		11.8	235.8
C		6.3	241.3*
E 1/4		1.7	245.9
	75' N		
E 1/4		10.4	248.0
C		4.6	243.0*
W 1/4		10.5	237.1
	100' N.		
Wcb.		9.6	238.0
1/4		5.2	242.4
C		1.2	246.4*
	125' N.		
W		8.6	239.0
cb.		2.8	244.8
	150' N.		
W		6.0	241.6
	175' N.		
W		6.6	241.0
T.P.	12.99	259.97	0.62
	5 ch Lewis		246.95
Ecb.		5.7	254.6
	5 1/4 Lewis		
E		6.2	259.8
cb.		6.3	253.7
	or Lewis		
E		2.5	257.5
cb.		9.2	250.8

	259.97		
	N 1/4 Lewis		
E		5.6	254.4
cb.		11.0	249.0
	N cb. Lewis		
E		7.0	253.0
cb.		13.0	247.0
	N Lewis		
E		8.6	251.4
	25' N of Lewis		
E		6.7	253.3
	50' N.		
E		1.1	258.9
cb.		8.3	251.7
	75' N.		
Ecb.		4.0	256.0
	100' N.		
Ecb.		1.3	258.7
1/4		5.0	252.0
	125' N.		
E 1/4		4.0	256.0
C		8.3	251.7*
W 1/4		11.5	248.5
T.P.	11.68	269.38	257.65
	5 ch Lewis		
E		7.7	261.6
	75' N of Lewis		
E		6.0	263.3

1/9/58

26933		100' N of Lewis	
E		26	266.7
	125' N.		
E		0.9	268.4
cb.		4.1	265.2
BM	1.54	262.26	8.91
		260.42	85' N of Lewis
	150' N of Lewis		
wcb		12.6	249.7
1/2		8.0	254.3
C		1.0	261.3 *
	175' N.		
wcb		14.2	248.1
1/4		8.1	254.2
	200' N		
w		15.6	246.7
cb.		8.6	253.7
1/4		1.9	260.4
	225' N		
w		8.7	253.6
cb		2.9	259.4
T.P.	12.75	272.12	2.89
		259.37	150' N.
E		3.7	268.4
cb.		4.4	267.7
1/4		5.8	266.3
	175' N		
E		3.9	268.2
cb.		4.3	267.8

27212		300' N	
1/4		5.3	266.8
C		9.5	262.6*
	300' N		
E		2.5	269.6
cb.		4.3	267.8
1/4		4.8	267.3
C		7.0	265.1*
	225' N		
E		3.5	268.6
cb.		4.0	268.1
1/4		4.6	267.5
C		5.8	266.3*
1/2		7.8	264.3
	250' N		
w		9.1	263.0
cb		7.7	264.4
1/2		7.2	264.9
C		5.9	266.2*
1/2		4.5	267.6
cb		3.6	268.5
E		3.4	268.7
	275' N		
E		3.7	268.4
cb		3.9	268.2
1/4		4.6	267.5*
C		5.9	266.2
1/4		6.5	265.6

27212

cb	6.9	265.2
W	7.6	264.5
300' N. = St Broadway		
W	7.5	264.3
cb	7.3	264.8
1/4	6.7	265.4
C	6.0	266.1*
1/4	4.8	267.3
cb	4.4	267.7
E	4.6	267.5
500' Broadway		
W	7.5	264.6
cb	7.0	265.1
1/4	6.4	265.7
C	6.0	266.1*
1/4	5.9	266.7
cb	9.7	267.4
E	5.2	266.9
5 1/4 Broadway		
E	5.6	266.5
cb	6.3	265.8
1/4	5.7	266.4
C	5.9	266.2*
1/4	6.2	265.9
S	6.8	265.3
W	7.2	264.9

27212

Cr Broadway

W	6.9	265.2
cb	6.9	265.2
1/4	6.6	265.5
C	6.0	266.1*
1/4	5.9	266.2
cb	5.5	266.6
E	5.9	266.2
N 1/4		
E	6.0	266.1
cb	5.6	266.5
1/4	6.2	265.9
C	6.4	265.7*
1/4	6.7	265.4
cb	6.9	265.2
W	6.9	265.2
Ncb		
W	6.8	265.3
cb	6.7	265.3
1/4	6.9	265.2
C	6.8	265.3*
1/4	6.5	265.7
cb	5.9	266.2
E	6.2	265.9
N 1/4 Broadway		
E	7.5	264.6
cb	7.2	264.9
1/4	7.5	264.6

27212

c

4,8 265.3

1/4

6,9 265.2

cb

6,8 265.3

w

6,3 265.8

POSTED

16

Cross-sections of
Lewis Street from
W.L. Hawk to W.L. Clay Streets
for 75' wide

Bm	6.24	275.78	269.54	Goldfinch Grate
T.P.	3.57	268.58	10.74	265.04
		W.L. Hawk		
S		3.4	265.4	
cb		4.0	264.6	
1/4		2.8	263.8	
c	POSTED	6.4	262.2	
1/4		8.7	259.9	
cb		11.0	257.6	
N		13.6	255.0	
20' N		20.2	248.4	shape beyond about 1/2-1
25' N	25' W	16.3	252.3	
N		10.3	258.3	
cb		9.1	259.5	
1/4		6.7	261.9	
c		5.4	263.2	
1/4		4.6	264.0	
cb		4.0	264.6	
S		2.0	266.6	
	30' W			
S		1.3	267.3	
cb		1.9	268.7	
1/4		2.3	266.3	
c		3.1	265.5	
1/4		4.2	264.4	
cb		5.9	262.7	
N		6.8	261.8	
25' N		10.8	257.8	

19/08
Williams
Vernery

54

268.58

30' N		75' W of Hawk	6.3	262.3
N			4.0	264.6
cb			3.7	264.9
1/4			2.6	266.0
c			1.4	267.2
1/4			0.9	267.7
cb	POSTED		0.6	268.0
S			0.1	268.5
T.P.	348	272.00	8.06	268.52
		100' W		
S			3.0	269.0
cb			3.4	268.6
1/4			3.7	268.3
c			4.0	268.0
1/4			4.3	267.7
cb			5.2	266.8
N			6.0	266.0
		125' W		
N			4.4	267.6
cb			4.0	268.0
1/4			3.8	268.2
c			3.7	268.3
1/4			3.4	268.6
cb			3.7	269.2
S			3.0	269.0

272.00

150' W

S	3.7	268.3
cb	4.1	267.9
1/4	4.4	267.6
c	4.4	267.6
1/4	3.5	268.5
cb	4.5	267.5
N	3.6	266.4
175' W		
N	7.0	265.0
cb	6.5	265.5
1/4	5.6	266.4
c	3.8	268.2
1/4	3.9	268.1
cb	4.4	267.6
S	4.1	267.9
200' W = E of Tbis		
S	3.8	268.2
cb	4.4	267.6
1/4	4.9	267.1
c	5.7	266.3
1/4	6.2	265.8
cb	6.6	265.4
N	7.2	264.8

272.00

E of Tbis -

N	6.7	265.3
cb	6.0	266.0
1/4	5.5	266.2
c	5.4	266.6
1/4	4.8	267.2
cb	3.7	268.3
S	3.5	268.5
E 1/4		
S	3.3	268.7
cb	3.5	268.2
1/4	4.6	267.4
c	5.3	266.7
1/4	5.6	266.4
cb	6.3	265.7
N	8.3	263.7
Cv		
N	7.9	264.1
cb	6.8	265.2
1/4	6.1	265.9
c	5.1	266.9
1/4	4.4	267.6
cb	3.8	268.2
S	3.3	268.7

272.00
W 1/4 Ibis -

S	2.8	269.2
cb	3.3	268.7
1/4	4.2	267.8
c	5.0	267.0
1/4	5.5	266.5
cb	6.4	265.6
N	7.3	264.7

nr cb,

N	6.0	266.0
cb	5.5	266.5
1/4	4.8	267.2
c	4.3	267.7
1/4	3.7	268.3
cb	3.0	269.0
S	2.4	269.6

White Ibis -

S	2.1	269.9
cb	3.0	269.0
1/4	3.5	268.5
c	4.2	267.8
1/4	4.6	267.4
cb	5.2	266.8
N	5.8	266.2*

T.P. 5.69 274.54 3.15 268.85

274.54
50' W

N	6.2	268.3*
cb	6.1	268.4
1/4	5.7	268.8
c	5.6	268.9
1/4	5.3	269.2
cb	5.2	269.3
S	4.6	269.9

100' W - Alley

S	3.7	270.8
cb	3.8	270.7
1/4	3.9	270.6
c	4.3	270.2
1/4	3.8	270.7
cb	3.8	270.7
N	4.1	270.4*

115' W Alley

N	3.7	270.8*
cb	3.7	270.8
1/4	3.7	270.8
c	3.5	271.0
1/4	3.3	271.2
cb	3.3	271.2
S	3.0	271.5

T.P. 3.47 276.53 1.98 273.06

276.53		
165' W of T613-		
S	3.5	273.0
cb	3.5	273.0
1/4	3.7	272.8
c	3.8	272.7
1/4	3.8	272.7
cb	3.7	272.8
N	4.3	272.2 x
215' W = EL Jackdaw		
N	3.3	273.2 x
cb	3.2	273.3
1/4	3.1	273.4
c	3.0	273.5
1/4	2.8	273.7
cb	2.4	274.1
S	2.2	274.3
E cb Jackdaw		
S	2.2	274.3
cb	2.1	274.4
1/4	2.5	274.0
c	2.9	273.6
1/4	2.7	273.8
cb	2.8	273.7
N	3.0	273.5 x

276.53		
E 1/4		
N	3.1	273.4 x
cb	2.8	273.7
1/4	2.9	273.6
c	2.7	273.8
1/4	2.4	274.1
cb	2.3	274.2
S	2.0	274.5
On Jackdaw		
S	1.8	274.7
cb	1.9	274.6
1/4	2.4	274.5
c	2.7	273.8
1/4	2.5	274.0
cb	2.7	273.8
N	2.9	273.6 x
W 1/4		
N	2.6	273.9 x
cb	2.6	273.9
1/4	2.3	274.2
c	2.4	274.1
1/4	2.2	274.3
cb	2.0	274.5
S	2.0	274.5

2765.3
W of Jackdaw

S	2.1	2744
cb	2.3	2742
1/4	2.2	2743
e	2.3	2742
1/4	2.4	2741
cb	2.3	2742
N	2.6	2739 x
T.P.	5.41	280.17 1.77 274.76

W Line Jackdaw

N	6.1	274.1
cb	5.7	274.5
1/4	5.9	274.3
e	6.1	274.1
1/4	5.7	274.5
cb	5.8	274.4
S	5.9	274.3

50' W. of Jackdaw

S	5.4	274.8
cb	5.3	274.9
1/4	5.3	274.9
e	5.6	274.6
1/4	5.6	274.6
cb	5.5	274.7
N	5.3	274.9 x

280.17
100' W = Alley

N	4.0	276.2 x
cb	4.2	276.0
1/4	4.4	275.8
e	4.4	275.8
1/4	4.5	275.7
cb	4.7	275.5
S	5.1	275.1

115' W = Alley

S	4.8	275.4
cb	4.7	275.5
1/4	4.4	275.8
e	4.3	275.9
1/4	4.1	276.1
cb	3.8	276.4
N	3.8	276.4 x
T.P.	3.17	280.82 2.52 277.65

165' W

N	3.5	277.3 x
cb	3.8	277.0
1/4	4.2	276.5
e	4.8	276.0
1/4	4.8	276.0
cb	5.2	275.6
S	5.0	275.8
T.P.	4.62	281.65 3.79 277.03

281.65

215 = EL Inqalls -

S	5.4	276.3
cb	5.3	276.4
1/4	5.4	276.3
C	5.4	276.3
1/4	5.2	276.5
cb	4.6	277.1
N	4.8	277.2 <i>Hub.</i>
E cb.		
N	4.2	277.5 *
cb	4.7	277.0
1/4	5.1	276.6
C	5.2	276.5
1/4	5.0	276.7
cb	4.9	276.8
S	5.1	276.6
E 1/4		
S	4.7	277.0
cb	4.5	277.2
1/4	4.8	276.9
C	5.0	276.7
1/4	4.8	276.9
cb	4.7	277.0
N	4.5	277.2 *

281.65

EN Inqalls

N	4.2	277.5 *
cb	4.7	277.0
1/4	4.6	277.1
C	4.7	277.0
1/4	4.6	277.1
cb	4.6	277.1
S	4.7	277.0
W 1/4		
S	4.7	277.0
cb	4.6	277.1
1/4	4.5	277.2
C	4.6	277.1
1/4	4.5	277.2
cb	4.7	277.0
N	4.1	277.6 *
W cb.		
N	4.4	277.3 *
cb	4.8	276.9
1/4	4.5	277.2
C	4.3	277.4
1/4	4.5	277.2
cb	4.4	277.3
S	4.7	277.0

281.65

W Line Trigalls

S	4.8	276.9
cb	4.8	276.9
1/4	4.6	277.1
c	4.6	277.1
1/4	4.7	277.0
cb	5.0	276.7
N	4.5	277.2

50' W

N	5.4	276.3
cb	5.6	276.1
1/4	5.2	276.5
c	5.2	276.5
1/4	5.2	276.5
cb	5.2	276.5
S	4.9	276.8

100' W

S	4.3	277.4
cb	4.7	276.8
1/4	4.9	277.3
c	4.6	277.1
1/4	5.2	276.5
cb	5.5	276.2
N	5.2	276.5

281.65

150' W

N	4.3	277.4
cb	4.5	277.2
1/4	4.4	277.3
c	4.2	277.5
1/4	4.7	277.0
cb	5.0	276.7
S	5.2	276.5

300' W = EL. Clay-

S	5.1	276.4
cb	4.6	277.1
1/4	4.9	277.3
c	4.1	277.6
1/4	3.9	277.8
cb	3.7	278.0
N	3.7	278.0

E cb. Clay-

N	3.7	278.0
cb	4.0	277.7
1/4	3.8	277.9
c	4.1	277.6
1/4	4.3	277.4
cb	4.8	276.9
S	5.1	276.6

28165

E 1/4 Clay

S	5.0	276.7
cb	4.8	276.9
1/4	4.5	277.2
c	4.2	277.5
1/4	4.1	277.6
cb	4.1	277.6
N	3.9	277.8 x
cr.		
N	4.2	277.5 x
cb	4.6	277.1
1/4	4.4	277.3
c	4.4	277.3
1/4	4.7	277.0
cb	4.9	276.8
c	5.1	276.6
W 1/4		
S	5.5	276.2
cb	5.2	276.5
1/4	4.9	276.8
c	4.8	276.9
1/4	4.7	277.0
cb	4.8	276.9
N	4.6	277.1 x

28165

W 1/4 Clay

N	4.7	277.0 x
cb	5.1	276.6
1/4	4.7	277.0
c	4.6	277.1
1/4	4.7	277.0
cb	5.3	276.4
S	5.8	275.9
W 1/4 Clay		
S	5.9	275.8
cb	5.9	276.3
1/4	4.7	277.0
c	4.9	276.8
1/4	4.8	276.9
cb	5.0	276.7 ^{20 1/2} pipe
N	4.36	277.29 x

POSTED

cross-sections of
 Lewis St from
 W. L. Goldfinch to E. L. Hawk
 for 50' wide

	+R	H.I.	-R
B.M.	2.88	272.42	
	8.03	272.84	7.61
	W. L. Goldfinch		
S		6.50	266.3
Crk		6.70	
+2		7.60	
1/4		7.80	
M		8.20	264.6
1/4		8.80	
Crk		10.20	
N		15.00	257.8
	25' W		
N	11.90		260.9
Crk	8.60		
1/4	7.00		
M	7.00		265.8
1/4	6.7		
+6	6.3		
Crk	5.8		
S	5.6		267.2

POSTED

B. M. Goldfinch
 G. H. = 268.54

1/28 Dunkle
 1/08 Dopman
 Shaw

272.84

62

		50' W
S	4.0	268.8
Crk	4.3	
+2	5.0	
1/4	5.3	
M	5.6	267.2
1/4	6.1	
Crk	6.7	
N	7.0	265.8
	75' W	
N	5.6	267.2
Crk	5.2	
1/4	5.1	
M	5.1	267.7
1/4	4.8	
+	4.4	
Crk	3.9	
S	4.0	268.8
	1+00 W	
S	3.3	
Crk	3.2	
+5	4.4	
1/4	4.4	
M	4.5	
1/4	4.7	
Crk	4.9	
N	5.3	

	272.42	
	1+25 W	
N	5.30	
erb	5.00	
1/4	4.60	
M.	4.3	
1/4	4.2	
+ 3	4.0	
+ 6	2.8	
erb	2.9	
S.	3.0	
	150' W	
S	3.1	269.7
erb	3.0	
+ 2	3.0	
+ 4	4.1	
1/4	4.1	
M.	4.3	268.5
1/4	4.5	
erb	4.8	
N	5.4	267.4

	272.42
	1+75 W
N	6.1
erb	5.5
1/4	5.0
M	4.5
1/4	4.6
+ 1	4.5
+ 4	3.3
erb	3.2
S	3.2
	W. L. Hawk
S	3.4
erb	3.4
+ 2	3.6
+ 6	5.3
1/4	5.4
M	5.9
1/4	6.4
erb	6.9
N	7.6

X-Sections of Lewis St

from W.L. Clay To W.L. Randolph
for 75' wide

B.M. N.W. Cor
Clay & Lewis
277.29

Dunkle
1/28/08 Doynan
Shaw

STA +R H.I. -R Elev

B.M. 3.60 280.89

W.L. Clay (Cliff)

N		3.70	277.2
+10		4.0	276.9
erb		4.8	276.1
1/4		4.1	276.8
M.		4.30	276.6
+2		3.80	277.1
1/4		3.9	277.0
erb		4.7	276.2
S.		5.2	275.7

25' W

S		5.6	275.3
erb		5.3	275.6
+9		5.1	275.8
1/4		3.9	277.0
+10		4.0	276.9
+11		4.7	276.2
M.		4.7	276.2
1/4		4.2	276.7
erb		4.9	276.0
+2		4.1	276.8
N		4.0	276.9

Postcard

50' W

N	4.0	276.9
+10	4.3	276.6
erb	5.1	275.8
1/4	4.3	276.6
M.	4.9	276.0
+1	4.8	276.1
+3	4.2	276.7
1/4	4.0	276.9
+2	5.2	275.7
erb	5.0	275.9
S.	5.1	275.8

75' W

S	5.7	275.2
erb	5.7	275.2
+10	5.9	275.5
1/4	4.2	276.7
+10	4.3	276.6
+11	4.9	276.0
M.	5.0	275.9
1/4	4.4	276.5
erb	5.2	275.7
+2	4.4	276.5
N	4.1	276.8

P

	100' W		
N	280.25	4.1	276.2
+10		4.6	275.7
+11		5.2	275.1
1/4		4.5	275.8
M ₁		5.3	275.0
+X2		5.2	275.1
X +3		4.4	275.9
1/4		4.1	276.2
+3		5.3	275.0
Crk		5.0	275.3
S ₁		5.1	275.2

125 W

S		6.0	274.3
Crk		5.7	274.6
+11		5.3	275.0
1/4		4.9	275.9
+10		4.6	275.7
+11	P	5.5	274.8
M ₁		5.5	274.8
1/4		4.7	275.6
Crk		5.3	275.0
+1		5.3	275.0
+2		4.6	275.7
N		4.1	276.2

280.25

150' W

N		4.3	276.1
+10		4.7	275.6
+11		5.5	274.8
Crk		5.5	274.8
1/4		4.9	275.4
M ₁		5.7	274.6
+1		5.5	274.8
+2		4.8	275.5
1/4		4.9	275.9
+1		5.3	275.0
Crk		5.2	275.1
S ₁		5.8	274.5

175' W

S		5.4	274.9
Crk		4.8	275.5
1/4		4.7	275.6
+10		4.9	275.4
+11		5.8	274.5
M ₁		5.9	274.4
1/4		5.1	275.2
Crk		5.7	274.6
+1		5.7	274.6
+2		4.7	275.6
N		4.2	276.1

280.25

E.L. Randolph

N	4.4	275.9
+10	5.0	275.3
+11	5.6	274.7
crb	5.7	274.6
1/4	5.2	275.1
M.	5.8	274.5
+1	5.8	274.5
+2	5.0	275.3
1/4	4.8	275.5
+1	5.2	275.1
crb	5.6	274.7
S.	5.8	274.5

E. Curb Line Randolph

S	5.7	274.6
crb	5.6	274.7
1/4	5.1	275.2
+2	5.7	274.6
M.	5.8	274.5
1/4	5.1	275.2
crb	5.8	274.5
N	5.1	275.2

280.25

E 1/4

N	5.0	275.3
crb	5.8	274.5
1/4	5.2	275.1
M.	5.8	274.5
1/4	5.4	274.9
crb	5.3	275.0
S.	5.4	274.9

Center Randolph

S	5.7	274.6
crb	5.5	274.8
1/4	5.2	275.1
M.	5.9	274.4
1/4	5.2	275.1
crb	6.0	274.3
N	4.9	275.4

W 1/4

N	5.2	275.1
crb	6.0	274.3
1/4	5.4	274.9
M.	6.1	274.2
1/4	5.4	274.9
crb	5.8	274.5
S.	6.0	274.3

W. CURB LINE

S	280.25	6.1	274.2
crk		5.8	274.5
1/4		5.5	274.8
+4		6.2	274.1
M.		6.3	274.0
1/4		5.5	274.8
crk		6.1	274.2
+7		6.0	274.3
+8		5.4	274.9
N		5.2	275.1

POSTED

W. R. Line Randolph

N		5.1	275.2
+10		5.4	274.9
+11		6.1	274.2
crk		6.3	274.0
1/4		5.6	274.7
M.		6.4	273.9
+1		6.2	274.1
+2		5.4	274.9
1/4		5.2	275.1
crk		5.9	274.4
S.		6.1	274.2

X-Section Falcon ST
 From N. Line Broadway
 To N. Line Stocton.

B.M. SPK. 1/4
 Tel. Pole
 B.S. N. Lewis
 260.42

1/28/08

68

B.M.	+R	H.I.	-R	Elev
B.M.	9.95	270.37		
		N Line Broadway		
W			4.7	265.7
erb			5.1	265.3
1/4			5.2	265.2
M.			5.1	265.3
1/4			5.7	264.7
erb			5.5	264.9
E			5.9	264.6
				POSTED
		25' N Broadway		
E.			10.0	260.4
erb			8.3	262.1
1/4			6.8	263.6
+6			5.8	264.6
M			5.2	265.2
1/4			5.1	265.3
erb			4.9	265.5
W			4.2	266.2
		50' N		
W			4.1	266.3
erb			4.6	265.8
1/4			5.1	265.3
M			5.9	264.5
1/4			7.5	262.9
erb			9.5	260.9
E			11.8	258.6

	270.37	7.5'	A Broadway	
E	11.5			258.9
erb	9.0			261.4
1/4	6.8			263.6
M	5.1			265.3
1/4	4.4			266.0
erb	4.2			266.2
W	3.5			266.6
			POSTED	
			100' M	
W	3.4			267.0
erb	3.6			266.8
1/4	3.9			266.5
M	4.5			265.9
1/4	5.7			264.7
erb	8.4			262.0
E	10.7			259.7
			1+25' N	
E	10.0			260.4
erb	8.3			262.1
1/4	6.3			264.1
M	5.1			265.3
1/4	4.3			266.1
erb	3.9			266.5
W	3.6			266.8

270.37

1150' N

W	3.6	266.8
erb	4.3	266.1
1/4	5.1	265.3
M	6.1	264.3
1/4	7.3	263.1
erb	8.4	262.0
E	10.0	260.4

1175' N

E	9.9	260.5
erb	7.9	262.5
1/4	7.0	263.4
M	6.0	264.4
1/4	5.1	265.3
erb	4.5	265.9
W	3.8	266.6

2+00' N

W	3.7	266.7
erb	4.1	266.3
1/4	4.7	265.7
M	5.4	265.0
1/4	6.4	264.0
erb	7.1	263.3
E	8.3	262.1

2+75' N

E	7.0	263.4
erb	6.2	264.2
1/4	5.5	264.9
M	4.7	265.7
1/4	4.9	265.5
erb	4.7	265.7
W	5.0	265.4

2+50' N

W	5.8	264.6
erb	5.5	264.9
1/4	5.1	265.3
M	5.0	265.4
1/4	4.9	265.5
erb	5.2	265.2
E	5.7	264.7

POSTED

2+75' N

E	4.4	266.0
erb	4.4	266.0
1/4	4.6	265.8
M	4.9	265.5
1/4	5.4	265.0
erb	6.6	263.8
W	8.0	262.4

11

270.37

3400' N-S Line Station

W	270.37	10.9	259.5
crb		7.7	260.7
"4		7.7	262.7
M		6.2	264.2
"4		5.1	265.3
crb		4.3	266.1
E		4.1	266.3

S curb L Station

E		4.1	266.3	
crb		4.7	265.7	
"4		5.8	264.6	
M		7.1	263.3	
"4		8.9	261.5	
crb		10.2	260.2	
W		11.5	258.9	
T.P.	8.44	267.55	11.26	259.11

S "4

W		10.8	256.8
crb		8.4	259.2
"4		6.8	260.8
M		5.2	262.4
"4		3.4	264.2
crb		2.1	265.5
E		1.5	266.1

70

267.55

center Station

E	1.6	266.0
crb	2.8	264.8
"4	4.1	263.6
M	5.7	261.9
"4	7.1	260.5
crb	7.1	258.5
W	12.1	255.5

N "4

W	12.5	255.1
crb	9.8	257.8
"4	7.5	260.1
M	6.0	261.6
"4	4.4	263.2
crb	3.3	264.3
E	2.0	265.6

N X curb

E	2.4	265.2
crb	3.6	264.0
"4	4.9	262.7
M	6.2	261.4
"4	8.3	259.3
crb	10.5	257.1
W	12.9	254.7

267.55

N P Line Station

W	14.4	253.2
crk	11.9	256.2
1/4	9.0	258.6
M	6.7	260.8
1/4	5.5	262.1
crk	4.5	263.1
E	3.3	264.3

POSTED

57

X Section Lewis St from
 W. L. Randolph + W. L. Stephens
 for 75' wide
 + R H. I - R Elev

B.M. 925 P.R.
 N.W. cor Clay
 Lewis 27729

for w.l. Randolph see page 67

B.M.	2.37	279.66	
			25' W. of Randolph
N		4.0	275.7
+10		4.3	275.4
+11		5.1	274.6
crb		5.1	274.6
1/4	TED	4.5	275.2
M		5.3	274.4
+1		5.9	274.3
+2		4.5	275.2
1/4	POSTED	4.2	275.5
crb		4.2	275.5
S		4.7	275.0
			50' W
S		5.4	274.3
crb		4.7	275.0
1/4		4.4	275.3
+10		4.7	275.0
+11		5.4	274.3
M		5.4	274.3
1/4		4.7	275.0
crb		5.2	274.5
+1		5.1	274.6
+2		4.5	275.2
N		4.2	275.5

1/29/58 Dunkle,
 Bonnar,
 Shaw

279.66

72

			75' W
N		4.4	275.3
+10		4.6	275.1
+11		5.4	274.3
crb		5.5	274.2
1/4		4.9	274.8
M		5.7	274.0
+1		5.6	274.1
+2		4.9	274.8
1/4		4.6	275.1
crb		5.1	274.6
S		5.8	273.9
			100' W
S		5.9	273.8
crb		5.9	273.8
+11		5.5	274.2
1/4		4.9	274.8
+10		5.1	274.6
+11		5.8	273.9
M		5.8	273.9
1/4		5.1	274.6
crb		5.6	274.1
+1		5.4	274.3
+2		4.8	274.9
N		4.5	275.2

125' W. Randolph

279.66

N	4.7	275.0
+10	4.9	274.8
+11	5.6	274.1
erb	5.8	273.9
1/4	5.4	274.3
M	6.0	273.7
+1	6.0	273.7
+2	5.3	274.4
1/4	5.3	274.4
+5	6.3	273.4
erb	6.5	273.2
S	6.3	273.4

150' W

S	7.0	272.7
erb	6.7	273.0
+10	6.6	273.1
1/4	5.5	274.2
+9	5.7	274.0
+11	6.2	273.5
M	6.2	273.5
1/4	5.6	274.1
erb	5.9	273.8
+1	5.7	274.0
+2	5.0	274.7
N	4.8	274.9

279.66

175' W

N	5.0	274.7
+10	5.1	274.6
+11	5.8	273.9
erb	6.0	273.7
1/4	5.6	274.1
M	6.5	273.2
+1	6.5	273.2
+3	5.8	273.9
1/4	5.7	274.0
+3	6.9	272.8
erb	7.2	272.5
S	7.5	272.2

200' W = E.L. Calhoun

S	7.5	272.2
erb	7.3	272.4
+10	6.9	272.8
1/4	6.0	273.7
+10	6.0	273.7
+11	6.9	272.8
M	6.7	273.0
1/4	6.0	273.7
erb	6.4	273.3
+1	6.2	273.5
+2	5.5	274.2
N	5.1	274.6

279.66

E. curb L Calhoun

N	5.6	274.1
+5	6.2	273.5
orb	6.5	273.2
1/4	6.6	273.1
M	6.7	273.0
+8	6.5	273.2
1/4	6.3	273.4
+3	7.2	272.5
orb	7.4	272.3
S	7.3	272.4

E 1/4

S	6.7	273.0
orb	6.7	273.0
1/4	6.9	273.4
M	6.2	273.5
1/4	6.1	273.6
orb	5.9	273.8
N	5.9	273.8

* Center Calhoun

N	5.3	274.4
orb	5.5	274.2
1/4	5.8	273.9
M	5.9	273.8
1/4	6.1	273.6
orb	6.2	273.5
S	6.2	273.5

279.66

74

W. 1/4

S	6.0	273.7
orb	6.1	273.6
1/4	6.6	273.1
M	6.3	273.4
1/4	6.1	273.6
orb	5.7	274.0
N	5.6	274.1

W. curb

N	5.4	274.3
+5	6.2	273.5
orb	6.3	273.4
1/4	6.6	273.1
M	6.8	272.9
+8	6.9	272.8
1/4	6.1	273.6
+1	5.6	274.1
orb	5.5	274.2
S	5.6	274.1

W. L. Calhoun

S	5.1	274.6
orb	4.9	274.8
+11	5.0	274.7
1/4	5.9	273.8
+10	6.1	273.6
+11	6.9	272.8
M	6.9	272.8
1/4	5.7	274.0
orb	6.2	273.5
+1	6.1	273.6
+2	5.4	274.3
N	5.2	274.5

273.66

25' W Calhoun

N	4.9	274.8
+10	5.1	274.6
+11	5.7	274.0
erb	5.8	273.9
1/4	5.5	274.2
M	6.5	273.2
+1	6.5	273.2
+2	5.8	273.9
1/4	5.5	274.2
+1	4.7	275.0
erb	4.1	275.6
S	4.1	275.6

50' W /

S	3.6	276.1
erb	4.0	275.7
+11	4.1	275.6
1/4	5.2	274.5
+10	5.5	274.2
+11	6.3	273.4
M	6.3	273.4
1/4	5.1	274.6
erb	5.6	274.1
+1	5.5	274.2
+2	4.6	275.1
N	4.4	275.3

279.66

75' W

N	4.0	275.7
+10	4.4	275.3
+11	5.2	274.5
erb	5.3	274.4
1/4	5.0	274.7
M	6.0	273.7
+1	6.0	273.7
+2	5.2	274.5
1/4	4.7	275.0
+1	3.4	276.3
erb	3.7	276.0
S	3.7	276.0

100' W

S	3.4	276.3
erb	3.7	276.0
+11	3.6	276.1
1/4	4.6	275.1
+10	5.0	274.7
+11	5.6	274.1
M	5.6	274.1
1/4	4.6	275.1
erb	5.0	274.7
+1	4.9	274.8
+2	4.0	275.7
N	3.7	276.0

27.9.66

175' W

N	3.2	276.4
+10	3.4	276.3
+11	4.4	275.3
erb	4.5	275.2
1/4	4.2	275.5
M	5.2	274.5
+1	5.2	274.5
+2	4.6	275.1
1/4	9.3	275.4
+1	3.5	276.2
erb	3.3	276.4
S	3.6	276.1

150' W

S	3.9	275.9
erb	3.5	276.2
+11	3.2	276.5
1/4	4.1	275.6
+10	4.4	275.3
+11	4.9	274.8
M	4.9	274.8
1/4	3.8	275.9
erb	4.2	275.5
+1	4.1	275.6
+2	3.5	276.4
N	3.1	276.6

175' W

N	2.7	277.0
+10	3.1	276.6
+11	3.4	278.3
erb	3.7	276.0
1/4	3.7	276.0
M	4.8	274.9
+1	4.6	275.1
+2	4.1	275.6
1/4	3.8	275.9
+1	3.1	276.6
erb	3.6	276.1
S	3.9	275.8

200' W = E. L. STEPHENS

S	4.4	275.3
erb	3.5	276.2
+11	2.9	276.8
1/4	3.7	276.0
+10	3.9	275.8
+11	4.5	275.2
M	4.5	275.2
1/4	3.4	276.3
erb	3.3	276.4
+2	3.0	276.7
N	2.5	277.2

E. CUTB STEPHENS

N	2.7	277.0
erb	2.9	276.8
1/4	3.3	276.4
M	4.1	275.6
+3	3.7	276.0
+6	3.0	276.7
1/4	3.3	276.4
erb	3.4	276.3
S	4.4	275.3

27966

E 1/4 Stephens

S	4.6	275.1
erb	4.0	275.7
1/4	3.8	275.9
M	3.6	276.1
erb	3.0	276.7
N	2.7	277.0

Center Stevens

N	2.5	277.2
erb	3.1	276.6
1/4	3.3	276.4
M	3.5	276.2
1/4	3.8	275.9
erb	4.5	275.2
S	4.9	274.8

W 1/4

S	5.3	274.4
erb	4.2	275.5
1/4	3.6	276.1
M	3.9	276.3
1/4	3.2	276.5
erb	2.9	276.8
N	2.6	277.1

W. CURB Stephens

N	2.4	277.3
erb	2.9	276.8
1/4	3.2	276.5
M	3.9	276.4
1/4	3.9	275.8
erb	4.5	275.2
S	5.0	274.7

W. L. Stephens

S	5.2	274.5
erb	4.7	275.0
1/4	4.1	275.6
M	3.6	276.1
1/4	3.2	276.5
erb	2.8	276.9
N	2.2	277.5

POSTED

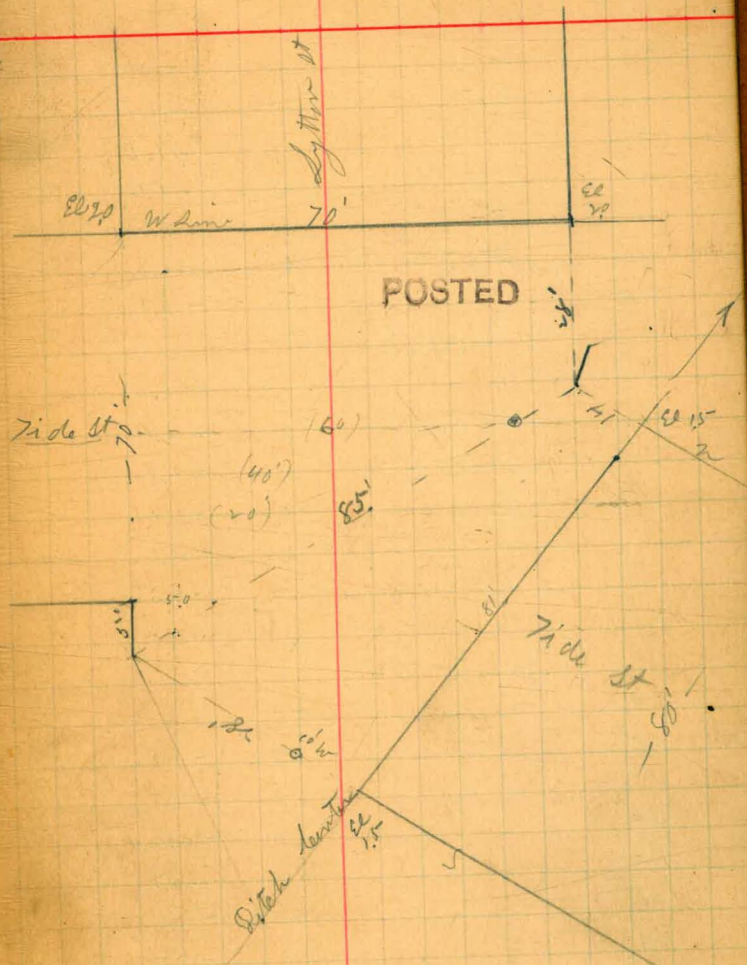
George Taylor
Drury

Cross-section of the Intersection
of Tide St + Lytton St

Apr 1 08

	4.40	4.71	0.31	B.M. on Abutment
	Line of Pitch			
rd		3.0	1.7	
bl		3.2	1.5	
y		3.7	1.1	
b	POSTED	3.3	1.5	
y		3.7	1.1	
bl		3.3	1.5	
SL		3.0	1.7	
	14' N on N line			} = Intersection
	28' W on S line			
SL		6.6	-1.9	
bl		6.4	-1.9	
y		5.2	-0.5	
b		4.5	0.2	
y		4.5	0.2	
bl		5.3	-0.6	
rd		5.5	-0.8	
	West line of Tide St			
SL		2.5	2.2	
bl		2.70	2.0	
y		2.1	1.6	
b		2.70	2.0	
y		2.1	1.6	
bl		2.7	2.0	
rd		2.5	2.2	

3



	Wkb of Tide at		
72		67	-2.0
66		65	-1.8
7		63	-1.6
6		63	-1.6
7		60	-1.3
66		60	-1.3
SR		58	-1.1
	W 1/4 of Tide at		
SR		60	-1.3
66		66	-1.9
7		66	-1.9
6		66	-1.9
7		68	-2.1
66		70	-2.3
72		67	-1.5
	Center of Tide at		
72		—	
66		58	-1.1
7		60	-1.3
6		54	-0.7
7		54	-0.7
66		58	-1.1
SR		57	-1.0
	E 1/4 of Tide at		
SR		55	-0.8
66		54	-0.7
7		50	-0.3
66		45	0.2
66		45	0.2

	Ebb of Tide at		
SR		65	-1.8
66		67	-2.0
70		60	-1.3
	E L of Tide		
SR		70	-2.3
75		68	-2.1
	E L of Tide		
		68	
		68	

Apr 20/06
U.S.

Cross-section of Intersection of
Lytton + Tide st

Diagram Page 78

5-15 5-46 0.31 Bm
The End of Dyke line of Patch

n2	38	1.7
bl	40	1.5
y	44	1.1
b	40	1.5
y	44	1.1
bl	40	1.5
sl	38	1.7

10' w of sl

sl	78	-2.3
----	----	------

28' w of sl line } = Angle line (85°)
14' w on n line }

sl	76	-2.1
bl	75	-2.0
y	62	-0.7
b	55	0.0
y	56	-0.1
bl	48	0.7
n2	40	+1.5

W line of Tide st

n2	32	2.3
bl	35	2.0
y	38	1.7
b	38	1.7
y	38	1.7
bl	35	2.0
sl	33	2.2

5-46

80

W line of Tide st

sl	66	-1.1
bl	57	-0.2
y	64	-0.9
b	50	0.5
y	40	1.5
bl	42	1.3
n2	34	2.1

W 1/4 of Tide st

n2	40	1.5
bl	46	0.9
y	46	0.9
b	56	-0.1
y	65	-1.0
bl	66	-1.1
sl	68	-1.3

Center of Tide st (60')

sl	64	-0.9
bl	63	-0.8
y	64	-0.6
b	56	-0.1
y	56	-0.1
bl	48	0.7

E 1/4 of Tide (40')

sl	63	-0.8
bl	62	-0.7
y	60	-0.5
b	54	-0.1
sl	54	0.1

Ebb of tide at (20')

SR	74	-1.7
SL	71	-1.6
+10	61	-0.6

Ebb of tide (5')

SR	68	-1.3
+5	68	-1.3

Approach on N line

3' high	} 15 yds
18' wide	
15' long	

Approach on S line

3' high	} 40 yds
24' wide	
30' long	

blough

28 70
 2.86
 3.86
 1.00
 2.78
 12.90
 15.68
 11
 15.57
 8.54
 24.11
 8.81
 23.30
 12.74
 26.04
 15
 35.89
 11.27
 47.16
 46.70
 11.23
 57.93
 1.26
 56.67
 8.82
 65.49
 6.75
 58.74
 .09
 58.83
 41.08
 42.75
 4.92
 52.70
 3.56
 40.14
 6.22
 51.41
 4.13
 47.28
 6.60
 53.88
 41.68
 42.20
 11.03
 43.23
 18.18
 35.05
 3.66
 36.71
 9.43
 47.28

4716
 1014
 56.64
 5589
 110
 5487
 4323
 4351
 38.58
 2537
 330
 54.77
 21663
 70
 140
 1986
 493
 25997
 231
 257.66
 53.3 - 1.10
 9.8 - 2

Calaveras 142 Broadway - Stockton
 Lewis Goldfinder - Kawitz L 50
 clay - Kawitz L 75
 undrs at Kawitz
 89° - 59°

DISTANCES FROM CENTER OF ROADWAY FOR CROSS-SECTIONING.

FOR SINGLE TRACK EMBANKMENT.

ROADWAY 14 FEET WIDE. SIDE SLOPES 1 1/2 TO 1.

	0	.1	.2	.3	.4	.5	.6	.7	.8	.9	
0	7.0	7.2	7.3	7.5	7.6	7.8	7.9	8.1	8.2	8.4	0
1	8.5	8.7	8.8	9.0	9.1	9.3	9.4	9.6	9.7	9.9	1
2	10.0	10.2	10.3	10.5	10.6	10.8	10.9	11.1	11.2	11.4	2
3	11.5	11.7	11.8	12.0	12.1	12.3	12.4	12.6	12.7	12.9	3
4	13.0	13.2	13.3	13.5	13.6	13.8	13.9	14.1	14.2	14.4	4
5	14.5	14.7	14.8	15.0	15.1	15.3	15.4	15.6	15.7	15.9	5
6	16.0	16.2	16.3	16.5	16.6	16.8	16.9	17.1	17.2	17.4	6
7	17.5	17.7	17.8	18.0	18.1	18.3	18.4	18.6	18.7	18.9	7
8	19.0	19.2	19.3	19.5	19.6	19.8	19.9	20.1	20.2	20.4	8
9	20.5	20.7	20.8	21.0	21.1	21.3	21.4	21.6	21.7	21.9	9
10	22.0	22.2	22.3	22.5	22.6	22.8	22.9	23.1	23.2	23.4	10
11	23.5	23.7	23.8	24.0	24.1	24.3	24.4	24.6	24.7	24.9	11
12	25.0	25.2	25.3	25.5	25.6	25.8	25.9	26.1	26.2	26.4	12
13	26.5	26.7	26.8	27.0	27.1	27.3	27.4	27.6	27.7	27.9	13
14	28.0	28.2	28.3	28.5	28.6	28.8	28.9	29.1	29.2	29.4	14
15	29.5	29.7	29.8	30.0	30.1	30.3	30.4	30.6	30.7	30.9	15
16	31.0	31.2	31.3	31.5	31.6	31.8	31.9	32.1	32.2	32.4	16
17	32.5	32.7	32.8	33.0	33.1	33.3	33.4	33.6	33.7	33.9	17
18	34.0	34.2	34.3	34.5	34.6	34.8	34.9	35.1	35.2	35.4	18
19	35.5	35.7	35.8	36.0	36.1	36.3	36.4	36.6	36.7	36.9	19
20	37.0	37.2	37.3	37.5	37.6	37.8	37.9	38.1	38.2	38.4	20
21	38.5	38.7	38.8	39.0	39.1	39.3	39.4	39.6	39.7	39.9	21
22	40.0	40.2	40.3	40.5	40.6	40.8	40.9	41.1	41.2	41.4	22
23	41.5	41.7	41.8	42.0	42.1	42.3	42.4	42.6	42.7	42.9	23
24	43.0	43.2	43.3	43.5	43.6	43.8	43.9	44.1	44.2	44.4	24
25	44.5	44.7	44.8	45.0	45.1	45.3	45.4	45.6	45.7	45.9	25
26	46.0	46.2	46.3	46.5	46.6	46.8	46.9	47.1	47.2	47.4	26
27	47.5	47.7	47.8	48.0	48.1	48.3	48.4	48.6	48.7	48.9	27
28	49.0	49.2	49.3	49.5	49.6	49.8	49.9	50.1	50.2	50.4	28
29	50.5	50.7	50.8	51.0	51.1	51.3	51.4	51.6	51.7	51.9	29
30	52.0	52.2	52.3	52.5	52.6	52.8	52.9	53.1	53.2	53.4	30
31	53.5	53.7	53.8	54.0	54.1	54.3	54.4	54.6	54.7	54.9	31
32	55.0	55.2	55.3	55.5	55.6	55.8	55.9	56.1	56.2	56.4	32
33	56.5	56.7	56.8	57.0	57.1	57.3	57.4	57.6	57.7	57.9	33
34	58.0	58.2	58.3	58.5	58.6	58.8	58.9	59.1	59.2	59.4	34
35	59.5	59.7	59.8	60.0	60.1	60.3	60.4	60.6	60.7	60.9	35
36	61.0	61.2	61.3	61.5	61.6	61.8	61.9	62.1	62.2	62.4	36

Calculated by Julien A. Hall, M. Am. Soc. C. E.