

303

400
LEVEL

F.B.303

Table showing the difference of latitude and departure in running 80 chains at any course from 1 to 60 minutes.

MINUTES	LKS.	MINUTES	LKS.	303	LKS.
1.....	2 $\frac{1}{3}$	21.....	49	41.....	95 $\frac{2}{3}$
2.....	4 $\frac{2}{3}$	22.....	51 $\frac{1}{3}$	42.....	98
3.....	7	23.....	53 $\frac{2}{3}$	43.....	100 $\frac{1}{3}$
4.....	9 $\frac{1}{3}$	24.....	56	44.....	102 $\frac{2}{3}$
5.....	11 $\frac{2}{3}$	25.....	58 $\frac{1}{3}$	45.....	105
6.....	14	26.....	60 $\frac{2}{3}$	46.....	107 $\frac{1}{3}$
7.....	16 $\frac{1}{3}$	27.....	63	47.....	109 $\frac{2}{3}$
8.....	18 $\frac{2}{3}$	28.....	65 $\frac{1}{3}$	48.....	112
9.....	21	29.....	67 $\frac{2}{3}$	49.....	114 $\frac{1}{3}$
10.....	23 $\frac{1}{3}$	30.....	70	50.....	116 $\frac{2}{3}$
11.....	25 $\frac{2}{3}$	31.....	72 $\frac{1}{3}$	51.....	119
12.....	28	32.....	74 $\frac{2}{3}$	52.....	121 $\frac{1}{3}$
13.....	30 $\frac{1}{3}$	33.....	77	53.....	123 $\frac{2}{3}$
14.....	32 $\frac{2}{3}$	34.....	79 $\frac{1}{3}$	54.....	126
15.....	35	35.....	81 $\frac{2}{3}$	55.....	128 $\frac{1}{3}$
16.....	37 $\frac{1}{3}$	36.....	84	56.....	130 $\frac{2}{3}$
17.....	39 $\frac{2}{3}$	37.....	86 $\frac{1}{3}$	57.....	133
18.....	42	38.....	88 $\frac{2}{3}$	58.....	135 $\frac{1}{3}$
19.....	44 $\frac{1}{3}$	39.....	91	59.....	137 $\frac{2}{3}$
20.....	46 $\frac{2}{3}$	40.....	93 $\frac{1}{3}$	60.....	140

MICROFILMED

DEC 9 1964
TABLE FOR RUNNING ON SLOPES.

In the following table the first column shows the angle, the second the number of links to be added to a chain on the slopes, to make one chain, horizontal measurement.

Angle	Cor. in Links	Angle	Cor. in Links	Angle	Cor. in Links	Angle	Cor. in Links
0		0		0		0	
4	0.24	11	1.88	18	5.14	25	10.54
5	0.38	12	2.24	19	5.76	26	11.26
6	0.55	13	2.63	20	6.42	27	12.24
7	0.76	14	3.06	21	7.11	28	13.37
8	0.98	15	3.53	22	7.85	29	14.34
9	1.24	16	4.02	23	8.64	30	15.47
10	1.55	17	4.56	24	9.47	35	22.07

Handwritten notes and calculations on the right page, including numbers like 31, 32, 33, 34, 35, 36, 37, 38, 39, 40, 41, 42, 43, 44, 45, 46, 47, 48, 49, 50, 51, 52, 53, 54, 55, 56, 57, 58, 59, 60 and various scribbles.

blount
Taylor
Prang 15

cross-section of clay st (80')

32nd to 33rd st

237 8499

E
W of 32nd st

Bm top of bed
8200 32x64

(60)

nl	54	79.6
bl	54	79.6
y	56	79.4
b	57	79.3
y	63	78.7
bl	66	78.4
sl	65	78.5
25' E of 32nd st		
sl	60	79.0
bl	60	79.0
y	60	79.0
b	58	79.8
nl	54	79.6
bl	48	80.2
nl	49	80.1

8499
Posted

50' E of 32nd

1

nl	46	80.4
bl	49	80.1
y	54	79.6
bl	51	79.9
y	48	79.2
bl	47	79.3
sl	55	79.5
75' E of 32nd		
sl	50	80.0
bl	50	80.0
y	49	80.1
b	53	79.7
y	53	79.7
bl	46	80.1
nl	47	80.3

8499

100' E of 32 m

ms	38	81.2
ll	40	81.0
v	46	80.4
b	46	80.4
y	44	80.6
ll	45	80.5
S2	46	80.4

125' E of 32 m

S2	41	80.9
ll	40	81.0
y	38	81.2
b	36	81.4
y	44	80.6
ll	38	81.2
ms	37	81.3

8499

150' E of 32 m

ms	42	80.8
ll	45	80.5
"	47	80.3
b	42	80.8
y	42	80.8
ll	39	81.1
S2	36	81.4

175' E of 32 m

S2	34	81.6
ll	37	81.1
"	40	81.0
y	43	80.7
y	47	80.3
ll	44	80.6
ms	44	80.6

2

8499

	200'	Exp	Sum	
nd			60	79.0
bl			60	79.0
y			57	79.3
b			48	80.2
y			41	80.9
bl			44	80.6
SA			37	81.3

225' Exp Sum

SA			38	81.2
bl			42	80.8
y			43	80.7
b			49	80.1
y			61	78.9
bl			61	78.9
nd			66	78.4

8499

3

250' Exp Sum

nd			76	77.4
bl			67	78.3
y			66	78.4
b			49	80.1
y			42	80.7
bl			34	81.6
SA			37	81.3

275' Exp Sum

SA			42	80.8
bl			50	80.0
y			55	79.5
b			59	79.1
y			70	78.0
bl			75	77.5
nd			93	75.7

84.99

ms	300'	E of	32nd	10.2	77.8
bl				8.5	76.7
y				7.5	77.5
b				6.8	78.2
y				5.8	79.2
bl				5.2	79.8
sl				4.2	80.8

337.5' E of W of 33rd

sl				5.5	79.7
bl				7.2	79.8
y				8.1	76.9
b				8.4	76.6
y				9.3	75.7
bl				9.9	75.1
ms				12.10	72.9

Cross section of clay st (80)

32nd to East at 4

-01 82.61 82.62 3m Post out clay

W of 32nd (60)

ms				3.5	79.1
bl				4.3	78.3
y				4.0	78.6
b				4.2	78.4
y				4.2	78.4
bl				4.3	78.3
sl				4.9	77.7

25' W of 32nd

sl				5.9	76.7
bl				5.8	76.8
y				5.8	76.8
b				5.2	77.4
y				4.4	78.2
bl				4.7	77.9
ms				4.0	78.6

82.61

50' W of 32nd

nl	4.7	77.9
bl	5.3	77.3
y	5.3	77.3
b	6.3	76.3
y	7.2	75.4
bl	8.0	74.6
sl	8.2	74.4

75' W of 32nd

sl	8.7	73.9
bl	8.4	74.2
y	7.7	74.9
b	6.9	75.7
y	6.7	75.9
bl	6.0	76.6
nl	5.2	77.0

82.61

100' W of 32nd

nl	6.2	76.4
bl	6.9	75.7
y	7.2	75.4
b	7.6	75.0
y	8.3	74.3
bl	8.7	73.9
sl	9.0	73.6

125' W of 32nd

sl	6.8	75.8
bl	6.8	75.8
y	7.0	75.6
b	7.1	75.5
y	7.2	75.4
bl	6.7	75.9
nl	6.3	76.3

5

Posted.

82.61

150'	W of	32nd	
W2		58	76.8
bl		64	76.2
y		67	75.9
b		55	76.1
y		56	77.0
bl		60	76.6
S2		64	76.2

175'	W of	32nd	
S2		69	75.7
bl		66	76.0
y		58	76.8
b		59	76.7
y		60	76.6
bl		58	76.8
W2		55	77.1

82.61

6

200'	W of	32nd	
W2		51	77.4
bl		60	76.6
y		61	76.5
b		62	76.4
y		62	76.4
bl		64	76.2
S2		67	75.9

225'	W of	32nd	
		72	
S2		68	75.8
bl		63	76.3
y		60	76.6
b		63	76.3
y		56	77.0
bl		54	77.2
W2		52	77.4

256'	W of	80.01	516
TP			

80.01

250' W of 32nd

nl	24	77.6
bl	22	77.8
y	26	77.4
b	31	76.9
y	32	76.8
bl	37	76.3
sl	42	76.8

275' W of 32nd

sl	38	76.2
bl	39	76.6
y	31	76.9
b	31	76.9
y	26	77.4
bl	25	77.5
nl	25	77.5

80.01

300' W of 32nd

nl	24	77.6
	21	77.9
	25	77.5
b	30	77.0
y	29	77.1
bl	28	77.2
sl	37	76.8

325' W of 32nd

sl	34	76.6
bl	31	77.9
y	28	77.2
b	28	77.2
y	23	77.7
bl	19	78.1
nl	21	77.9

8001

350' W of 32nd

nl	20	77.0
bl	31	76.9
y	30	77.0
l	33	76.7
y	34	76.6
bl	36	76.6
sl	39	76.1

375' W of 32nd

sl	41	75.9
bl	40	76.0
y	35	76.5
l	36	76.4
y	35	76.5
bl	39	76.1
nl	39	76.1

8001

400' W of 32nd

nl	35	76.7
bl	27	77.3
y	37	76.3
l	39	76.1
y	38	76.2
bl	39	76.1
sl	43	75.7

425' W of 32nd

sl	45	75.5
bl	39	76.1
y	38	76.2
l	38	76.2
y	41	75.9
bl	44	75.6
nl	46	75.4

8

8001

450' w of 32nd

RL	43	75.7
bl	41	75.9
"	39	76.1
b	42	75.8
"	42	75.8
bl	43	75.7
SL	47	75.3

475' w of 32nd

SL	56	74.4
bl	48	75.2
"	46	75.4
b	47	75.3
"	46	75.4
bl	49	75.1
RL	52	74.8

8001

500' w of 32nd

RL	60	74.0
bl	55	74.5
"	55	74.5
bl	58	74.2
"	57	74.3
bl	60	74.0
SL	64	73.6

525' w of 32nd

SL	73	72.7
bl	66	73.4
"	64	73.6
b	78	72.2
"	77	72.3
bl	69	73.1
RL	70	73.0
BL	76	72.8

9

214
 215
 216

80.01

550' w of 32nd

nl		80	72.0
bl		80	72.0
y		93	70.7
b		95	70.5
y		90	71.0
bl		810	71.9
S2		82	71.8

575' w of 32nd

S2		97	70.3
bl		103	69.7
y		110	69.0
b		115	68.5
y		111	68.9
bl		102	69.8
nl		102	69.8

80.01

600' W - Edine 31st st (60')

nl		105	69.5
bl		110	69.0
y		124	67.6
b		126	67.4
y		125	67.5
bl		125	67.5
S2		126	67.4

Tr. 428 7147 12.82 67.19

Ebb of 31st

S2		50	66.5
bl		54	66.1
y		50	66.5
b		50	66.5
y		45	67.0
bl		18	69.7
nl		06	70.9

71.47

E 1/4 of

31st

nl	20	67.5
bl	35	68.0
y	51	66.4
b	52	65.9
y	56	65.9
bl	63	65.2
SL	69	64.6

center of

31st

SL	675	64.7
bl	635	65.1
y	60	65.5
b	56	65.9
y	54	66.1
bl	50	66.5
nl	48	66.7

on Riv. of Lawrence

71.47

W 1/4 of

31st

nl	20	70.5
bl	17	69.8
y	49	66.6
b	57	65.8
y	59	65.6
bl	63	65.2
SL	72	64.3

W bl of

31st

SL	69	64.6
bl	59	65.6
y	50	66.5
b	53	66.7
y	57	67.8
bl	16	69.9
nl	02	71.2

11

7147

Wd of 31 at 11

nd	02	71.3
bl	22	69.3
y	42	67.3
b	53	66.2
	49	66.6
	59	65.6
SL	72	64.3

25' W of 31 at 11

SL	86	62.9
bl	67	64.8
y	58	65.9
b	56	65.9
y	76	66.9
bl	19	69.5
nd	13	70.2

7147

50' W of 31 at 11

nd	26	68.9
bl	29	68.6
y	60	65.5
b	67	64.8
y	68	64.7
bl	97	61.8
SL	120	59.5

75' W of 31 at 11

SL	122	59.3
bl	96	61.9
y	83	63.2
b	83	63.2
y	74	64.1
bl	40	67.5
nd	57	67.8

12

7147

	100'	w of	s1st st	
nl			7.6	63.9
bl			8.1	63.4
y			9.3	62.2
b			10.5	61.0
y			10.5	61.5
bl			11.8	59.7
sl			13.2	58.3
TP	855'	<u>6833</u>	11.69	59.78
	125'	w of	s1st st	
sl			12.0	56.3
bl			11.3	57.0
y			8.3	60.0
b			8.4	59.9
y			8.4	59.9
bl			8.6	59.7
nl			8.8	59.5

6833

13

	150'	w of	s1st st	
nl			10.5	57.8
			11.1	57.2
			12.1	56.2
b			9.2	59.1
y			10.0	58.3
bl			13.9	54.4
sl			12.1	56.2
	175'	w of	s1st st	
sl			11.5	56.8
bl			13.5	54.8
y			11.0	57.3
b			9.4	58.9
y			10.6	57.7
bl			10.2	58.0
nl			9.4	58.9

6833

	200'	W of	31st	St
nl			52	63.1
bl			70	61.3
y			79	60.4
b			82	60.1
y			93	59.0
bl			109	57.4
S2			120	56.3

225' W of 31st St

S2			91	59.2
bl			75	61.8
y			60	62.3
b			66	61.7
y			58	62.5
bl			46	63.7
S2			31	65.2

6833

14

	250'	W of	31st	St
nl			70	68.5
bl			1.0	67.3
y			4.1	64.2
b			50	63.3
y			4.7	63.6
bl			63	62.0
S2			78	60.5

275' W of 31st St

S2			74	60.9
bl			59	62.4
y			42	64.1
b			42	64.1
y			24	64.9
bl			1.1	67.2
nl			70	68.5

6833

300' W of 31st st

72	1.1	67.2
bl	2.2	67.1
"	4.1	64.2
b	4.6	63.7
"	5.7	62.6
bl	7.2	61.1
S2	7.9	60.4

325' W of 31st st

S2	9.0	59.3
bl	8.0	60.3
"	5.9	62.4
b	5.7	62.6
"	2.6	64.7
bl	3.1	65.5
bl	2.6	65.7

7418

6833

350' W of 31st st

72	4.0	64.3
bl	6.1	62.2
"	6.2	62.1
b	6.6	61.7
"	6.8	61.5
bl	8.0	60.3
S2	8.1	60.2

TP 1146 7418 5.61 62.52

325' W of 31st st

S2	12.2	62.0
bl	12.0	61.2
"	11.6	62.6
b	11.6	62.6
"	11.2	62.9
bl	11.3	62.9
72	10.0	64.2

15

7418

	400'	W of	31st	W
SL			11.0	63.2
bl			11.0	63.2
y			10.6	63.6
b			10.6	63.6
y			10.3	63.9
bl			10.6	63.9
SL			9.4	64.8

	425'	W of	31st	W
SL			7.4	66.8
bl			7.4	66.8
y			8.0	66.2
b			8.2	66.0
y			7.5	66.7
bl			7.8	66.4
SL			8.2	66.0

7418

16

	450'	W of	31st	W
SL			7.4	66.8
bl			6.1	68.1
y			6.1	68.1
b			6.1	68.1
y			5.9	68.2
bl			5.6	68.6
SL			5.8	68.4

	475'	W of	31st	W
SL			4.6	69.6
bl			4.7	69.5
y			4.4	69.8
b			4.4	69.8
y			4.5	69.6
bl			4.8	69.4
SL			5.5	68.7

7418

500' W of 3127 st

RL	53	68.9
bl	43	69.9
y	36	70.6
b	34	70.8
y	35	71.0
bl	34	70.8
SL	35	70.7

525' W of 3127 st

SL	32	71.0
bl	29	71.3
y	26	71.6
b	28	71.4
y	32	71.0
bl	41	70.1
RL	48	69.4

7418 7

550' W of 3127 st

RL	49	69.3
bl	41	70.2
y	35	71.0
b	28	71.4
y	26	71.6
bl	27	71.5
SL	25	71.7

575' W of 3127 st

SL	10	73.2
bl	18	72.4
y	24	71.8
b	27	71.5
y	37	70.5
bl	44	69.8
RL	49	69.3

17

7418

600' W - Edin ⁽⁸⁰⁾
30' West

SL			46	69.6
bl			46	69.6
"			53	69.9
b			23	71.9
"			14	72.8
bl			13	72.9
SL			07	73.5
TP	870	77.92	496	<small>on 100' scale 304' long</small>
	E bl	of	30' West	
NL			82	69.7
bl			78	70.1
"			60	71.9
b			56	72.3
"			50	72.0
bl			46	73.3
SL			46	73.3

77.92

E 1/4 of 30' West

18

SL			43	73.6
bl			49	73.0
"			52	72.7
b			53	72.6
"			63	71.6
bl			77	70.2
NL			79	70.0
	center of		30' West	
NL			75	70.4
bl			74	70.5
"			64	71.5
b			49	73.0
"			47	73.2
bl			46	73.3
SL			37	74.2

77.92

	W ^{1/2} of	20 ft	at
SL		40	73.9
bl		46	73.3
y		50	72.9
b		54	72.5
y		68	71.1
bl		76	70.3
SL		77	70.2

	W ^{1/2} of	20 ft	at
SL		76	70.3
bl		76	70.3
bl		66	71.3
l		52	72.7
7		44	73.5
bl		40	73.6
SL		32	74.7

77.92

19

	W ^{1/2} of	30 ft	at
SL		28	75.8
bl		36	73.3
y		44	73.5
l	Posted	52	72.7
y		66	71.3
bl		73	70.6
SL		74	70.5

12.90 82.15

69.24

69.24 Bl
SL on E Cor
20 ft Bl

	W ^{1/2} of	30 ft	at
SL		66	75.5
bl		76	74.5
y		80	74.1
b		91	73.0
y		105	71.6
bl		108	71.3
SL		105	71.6

POSTED

8212

50'

w of 200'

22

104

71.7

bl

103

71.8

98

72.3

b

88

73.3

y

79

74.2

bl

54

76.7

SL

54

76.7

75'

w of

300'

SL

42

77.9

bl

44

77.7

y

63

75.8

b

86

73.5

y

87

73.4

bl

93

72.8

SL

91

73.0

8212

100'

w of

300'

22

78

74.3

bl

85

73.6

y

77

74.4

b

82

73.9

y

65

75.6

bl

43

77.8

SL

26

79.5

125'

w of

300'

SL

22

79.9

bl

34

78.7

y

50

77.1

b

74

74.7

y

75

74.6

bl

79

74.2

SL

75

74.6

20

8212

150' w of south 21

h2	67	75.4
h1	7.5	74.6
4	7.4	74.7
6	7.4	74.7
4	5.8	76.3
h1	2.9	78.2
52	4.3	79.8

175' w of south

52	3.0	79.1
h1	3.8	78.3
7	5.7	76.4
1	6.8	75.3
7	7.0	74.8
h1	7.1	75.0
h2	6.2	75.9

8212

200' w of south

h2	5.0	77.1
h1	5.4	76.7
4	6.6	75.5
6	6.1	76.0
4	5.9	76.2
h1	4.7	77.4
52	2.6	78.5

225' w of south

52	4.2	77.9
h1	5.5	76.6
4	6.0	76.1
6	5.7	76.2
4	5.9	76.2
h1	5.3	76.8
h2	4.2	77.9

Clay

21

82.12

250' w of 300'

22	43	77.8
ll	52	76.9
y	56	76.5
b	54	76.7
y	49	77.2
ll	48	77.3
52	45	77.6

275' w of 300'

52	46	77.5
ll	48	77.3
y	47	77.4
b	45	77.6
y	48	77.3
ll	43	77.9
22	25	78.6

82.12

300' w of 300'

22	48	77.3
ll	44	77.7
y	47	77.4
b	44	77.7
y	57	78.4
ll	56	78.5
52	53	78.8

325' w of 300'

52	56	78.5
ll	57	78.4
y	47	78.0
b	44	77.7
y	48	77.3
ll	43	77.8
22	50	77.1

22

8212 8212

350' w of 300'

22	56	76.5
66	50	75.0
7	52	76.9
6	49	77.2
7	47	77.4
66	42	77.9
52	38	78.3

400' w of 200'

52	38	78.3
66	44	77.7
7	47	77.2
6	51	77.0
7	54	76.7
66	55	76.6
72	60	76.1

TP 705 8381 536 7676

8381

6607 11

23

425' w of 300'

22	71	76.7
66	69	76.9
7	72	76.6
6	70	76.8
7	65	77.3
66	64	77.4
52	57	78.1

450' w of 300'

52	58	78.0
66	66	77.2
7	69	76.9
6	70	76.8
7	72	76.6
66	71	76.7
72	71	76.7

8381

	475'	w of	300'	
22			74	76.4
bl			71	76.7
y			71	76.7
b			70	76.8
y			66	77.2
bl			62	77.6
S2			58	78.0

	475'	w of		
S2			55	78.3
bl			52	78.2
y			59	77.9
b			67	77.1
y			71	76.7
bl			70	76.8
22			72	76.6

8381

delay

24

	500'	w of	300'	at
22			72	76.6
bl			70	76.8
y			68	77.0
b			66	77.6
y			59	77.9
bl			57	78.1
S2			52	78.6

	525'	w of	300'	at
S2			47	79.1
bl			50	78.1
y			54	78.4
b			55	78.3
y			68	77.5
bl			67	77.1
S2			70	76.8

8381

550 W of 3000 ft

N2 6.5 77.7

N 6.7 77.1

V 6.5 77.3

6 5.4 78.4

V 5.2 78.6

N 4.8 79.0

S2 4.4 79.4

575 W of 3000 ft

S2 4.1 79.7

N 4.4 79.4

V 4.8 79.0

6 4.8 79.0

V 6.1 77.8

6.3 77.5

6.5 77.3

8381

W of 2900 ft

25

600 W = E of 2900 ft (60')

N2 5.5 6.6 77.2

N 6.1 77.7

V 6.1 77.7

6 4.9 78.9

V 4.9 78.9

N 4.4 79.4

S2 3.8 80.0

E of 2900 ft

S2 3.7 80.1

N 3.7 80.1

V 4.5 79.3

6 4.9 78.9

V 5.7 78.1

N 6.1 77.7

N2 6.5 77.3

8381

E 1/4 of 2902 28

N2	63	77.5
bl	62	77.6
4	65	77.6
6	57	78.6
4	47	79.1
bl	36	80.2
SE	28	81.0

POSTED

center of 2902 28

SE	37	80.1
N	41	79.7
4	48	79.0
6	52	78.6
4	59	77.9
bl	63	77.5
N2	64	77.4

8381

W 1/4 of 2901 28

N2	65	77.3
bl	64	77.4
4	62	77.6
6	54	78.4
4	48	79.0
bl	44	79.4
SE	42	79.6

POSTED

W bl of 2901 28

SE	39	79.9
bl	41	79.1
4	48	79.0
6	53	78.5
4	61	77.7
bl	64	77.4
N2	61	77.7

26

8381

	Wd of	29th	W
22		64	77.4
22		62	77.6
4		62	77.6
6		55	78.3
4		48	79.0
62		43	79.5
52		44	79.4

	25'	W of	29th	W
52			50	78.8
22			52	78.6
4			55	78.3
6			60	77.8
4			62	76.6
62			65	76.3
22			63	77.5

8381

6log

27

	50'	W of	29th	W
22			65	77.3
22			63	77.5
4			62	77.6
6			58	78.0
4			49	78.9
62			46	79.2
52			44	79.4

	75'	W of	29th	W
52			50	78.8
22			44	79.4
4			52	78.6
6			61	77.9
4			64	77.4
62			63	77.5
22			65	77.3
TP	425	8256	550	78.51

8256

	100'	w of	2900	
ns			5.6	77.0
bl			5.0	77.6
y			4.8	77.8
f			4.6	78.0
y			4.2	78.4
bl			4.0	78.6
se			3.0	79.6

125' w of 2900

se			3.2	79.4
bl			3.5	79.1
y			4.1	78.5
b			4.5	78.1
y			4.7	77.9
bl			5.4	77.2
ns			5.2	77.4

8256

blay

28

	150'	w of	2900	
ns			5.2	77.3
bl			5.2	77.4
y			4.8	77.8
b			4.7	77.9
y			4.3	78.3
bl			3.7	78.9
se			3.6	79.0

175' w of 2900

se			3.5	79.1
bl			4.2	78.4
y			4.6	78.0
b			5.1	77.5
y			5.0	77.6
bl			5.3	77.3
ns			5.5	77.1

8256

	200'	200'	290'	
22			57	76.9
66			56	77.0
4			57	76.9
6			54	77.2
4			47	78.2
66			42	78.4
52			34	79.2
	225'	200'	290'	
52			36	79.0
66			43	78.3
4			49	77.7
6			55	77.1
4			57	76.9
66			59	76.7
22			63	76.3

8256

29

	250'	200'	290'	
22			67	75.9
66			60	76.6
4			58	76.8
6			59	76.7
4			53	77.3
66			48	77.8
52			40	78.6
	275'	200'	290'	
52			45	78.1
66			50	77.6
4			54	77.1
6			59	76.7
4			60	76.6
66			62	76.3
22			66	76.0

POS. ...

8250

320' w of road st

22	63	76.3
bl	65	76.1
y	62	76.4
b	61	76.5
y	57	76.9
bl	55	77.3
S2	51	77.5

325' w of road st

S2	52	77.3
bl	54	77.2
y	57	76.9
b	60	76.6
y	62	76.3
bl	63	76.3
rd	64	76.2

8252

350' w of road st

22	67	75.9
bl	66	76.0
y	67	75.9
b	63	76.3
y	57	76.9
bl	55	77.1
S2	55	77.1

375' w of road st

S2	60	76.6
bl	60	76.6
y	70	75.6
b	73	75.3
y	71	75.1
bl	65	76.1
rd	71	75.5

30

	400'	8250	29.2	25-
nl			83	74.1
bl			80	74.6
y			76	75.0
b			76	75.0
TP	593	8094	755	75.01
y			57	75.4
bl			54	75.4
SL			42	76.7
	425'	w of	29.2	25-
SL			42	76.7
bl			47	76.2
y			52	75.7
b			56	75.3
y			53	75.6
bl			54	75.5
nl			61	74.8

	450'	8094	29.2	25-
nl			52	75.7
bl			55	75.4
y			51	75.8
b			50	75.9
y			49	POSTED
bl			47	76.2
SL			44	76.5
	475'	w of	29.2	25-
SL			40	76.9
bl			46	76.3
y			44	76.5
b			48	76.1
y			51	75.8
bl			53	75.6
nl			55	75.4

8094

500' w of 2907

22	54	75.5
bl	52	75.7
y	49	76.0
b	40	76.9
y	38	77.1
bl	38	77.1
SR	37	77.2

525' w of 2907

SR	34	77.5
bl	40	76.9
y	42	76.7
b	45	76.4
y	51	75.8
bl	53	75.6
ns	53	75.6

8094

blay

92

550' w of 2907

22	55	75.4
bl	53	75.6
y	52	75.7
b	45	76.4
y	45	76.4
bl	41	76.8
SR	23	78.6

575' w of 2907

SR	28	78.1
bl	45	76.4
y	47	76.2
b	47	76.2
y	52	75.7
bl	55	75.4
ns	58	75.1

80.94

600' W = E 2 28 20

nl	5.8	75.1
ll	5.2	75.7
ll	5.1	75.8
l	4.9	76.0
l	4.6	76.3
ll	4.6	76.3
sl	4.4	76.5

TP	1.28	
	7.25	74.18

stump
Bm

POSTED

blary st

33

E 1/4 of 28 st (60')

Bm Stump

	7.05	8.23	74.8
nl		6.5	75.0
ll		5.8	75.4
l		5.3	75.9
l		5.0	76.2
l		4.8	76.4
ll		4.6	76.6
sl		3.0	78.2

E 1/4 of 28 st

sl		3.6	77.6
ll		4.3	76.9
l		5.0	76.2
l		5.0	76.2
l		5.0	76.2
ll		5.9	75.3
nl		6.5	75.0

8123

center of 28 ft st

ne	57	75.5
bl	52	75.0
y	50	75.2
b	48	76.4
y	50	75.2
bl	47	76.5
sl	43	76.9

W 1/4 of 28 ft st

sl	55	75.7
bl	60	75.2
y	60	75.2
b	59	75.3
y	62	75.0
bl	63	74.9
ne	62	75.0

8123

along st

34

W 1/2 of 28 ft st

ne	67	74.5
bl	62	75.0
y	63	74.9
b	63	74.9
y	61	75.1
bl	61	75.1
sl	60	74.2

W 1/2 of 28 ft st

sl	52	76.0
bl	47	76.5
y	49	76.3
b	52	76.0
y	50	76.1
bl	56	75.6
ne	57	75.5

8/23

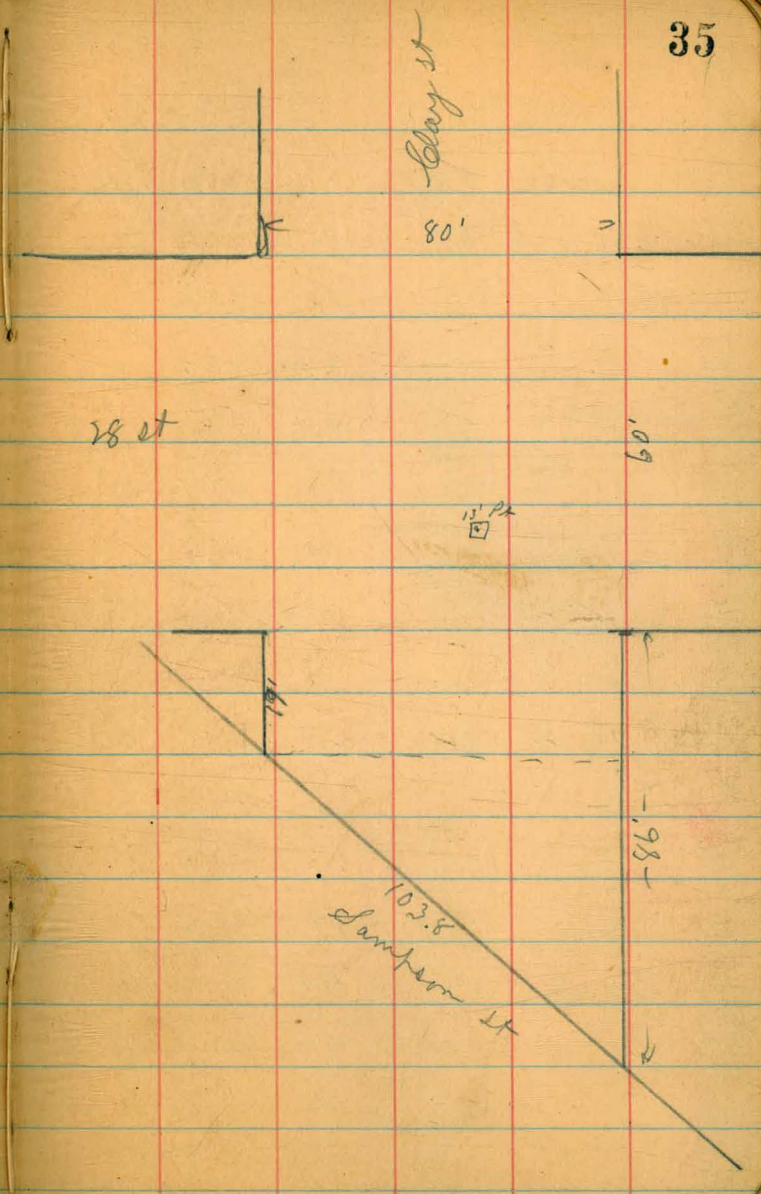
00

19.8' W of 28 st

nd = Ed Sampson	5.2	76.0
bl	4.6	76.6
y	4.5	76.7
h	4.1	77.1
y	4.0	77.2
tl	3.6	77.6
SL	2.6	77.6

Edin Sampson

SL = 86' W of 24'	1.6	79.6
tl	2.4	78.8
y	2.9	78.3
h	3.7	77.5
-11	4.4	77.0
tl	4.7	76.5
nd = 19.8' W of 28	5.2	76.0



through
Ed 28^m to W 2 33^a

Cross section of Webster St (80')

76.4

Webster

36

BM 196 76.4 74.8

E 2 of 28^m 15 (60')

S 2 3.1 73.0

bl 3.9 72.2

" 4.5 71.6

POSTED

" 5.0 71.1

" 5.0 71.1

bl 5.2 70.9

RL 5.4 70.7

E bl of 28^m 0

RL 5.5 70.6

bl 5.2 70.9

" 5.7 70.4

bl 4.7 71.4

" 4.4 71.7

bl 4.4 71.7

S 2 4.0 72.1

E 1/4 of 28^m ✓

S 2 4.0 72.1

bl 4.4 72.1

" 4.1 72.1

bl 4.4 71.7

" 4.8 71.3 POSTED

bl 4.4 71.7

RL 5.0 71.1

center of 28^m ✓

RL 4.6 71.5

bl 4.1 72.0

" 4.4 71.7

bl 4.4 71.7

" 4.4 71.7

bl 4.0 72.1

S 2 4.0 72.1

" 4.4 71.7

76.14

52	W 1/4 of 28 th st		
52		41	72.0
ll		41	72.0
7		44	71.7
6		44	71.7
7		45	71.6
ll		49	71.2
22		50	71.1

W 1/4 of 28th st

22		50	71.1
ll		49	71.2
7		47	71.4
6		43	71.8
7		42	71.9
ll		42	71.9
52		41	72.0

76.14

Webster

37

5	E 1/2 of 28 th st		
52		42	71.9
ll		41	72.0
7		42	71.9
6		42	71.9
7		45	71.6
ll		48	71.3
22		50	71.1

50' E 1/2 of 28th st

22		50	71.1
ll		48	71.3
7		49	71.2
6		41	72.0
7		47	71.4
ll		45	71.6
52		42	71.9

76.14

	100'	E of	28 th St	W
SL			49	71.2
bl			48	71.3
"			51	71.0
"			53	70.8
"			54	70.9
bl			54	70.7
22			55	70.6

150' E of

	28 th St	W
22	56	70.5
bl	55	70.6
"	53	70.8
"	49	71.2
"	50	71.1
bl	49	71.2
SL	49	71.2

76.14 Webster

38

	200'	E of	28 th St	W
SL			40	72.1
bl			46	71.5
"			43	71.8
"			42	71.9
"			44	71.7
bl			51	71.0
22			52	70.9

250' E of

	28 th St	W
22	47	71.4
bl	46	71.5
"	46	71.5
"	42	71.9
"	39	72.2
bl	43	71.8
SL	47	72.4

76.14

	300	E of	2800 ft	
SL			29	72.2
ll			4.1	72.0
γ			4.2	71.9
δ			4.1	72.0
γ			4.4	71.7
ll			4.6	71.5
SL			4.5	71.6

	350	E of	2800 ft	
SL			4.7	71.4
ll			4.5	71.6
γ			4.3	71.8
δ			3.9	72.2
γ			4.2	71.9
ll			4.5	71.6
SL			3.9	72.2

TP 520 77.17 4.27 71.87

77.17

Wehler

39

	400	E of	2800 ft	
SL			5.0	72.2
ll			5.3	71.9
γ			5.0	72.2
δ			5.0	72.2
γ			5.7	71.5
ll			5.9	71.3
SL			5.7	71.5

	450	E of	2800 ft	
SL			6.0	71.2
ll			5.9	71.3
γ			5.0	72.2
δ			5.3	71.9
γ			5.5	71.7
ll			5.4	71.8
SL			4.9	72.3

7717

500	E of	2801	at
52		53	71.9
62		56	71.5
7		57	71.5
8		57	71.5
9		58	71.6
62		57	71.5
22		57	71.5

550 E of 28 at

22		61	71.1
62		60	71.2
7		60	71.2
8		57	71.5
9		55	71.7
6		50	72.2
52		52	72.0

7717

webster

600 E = W 2 2901 at (60) ⁴⁰

52		53	71.9
62		52	71.6
7		57	71.5
6		50	72.2
9		58	71.4
62		61	71.1
22		61	71.1

W 600 E of 2901 at

22		62	71.0
62		59	71.3
7		59	71.3
6		56	71.6
9		55	71.7
62		58	71.4
52		54	71.7

77.17

W 1/4 of 2922 st

SL	58	71.4
bl	59	71.3
y	59	71.3
b	59	71.3
y	59	71.3
bl	60	71.2
nl	59	71.3

center of 2922 st

nl	59	71.3
bl	62	71.0
y	59	71.8
b	52	71.9
y	58	71.4
bl	53	71.9
SL	51	72.1

77.17

webster

41

E 1/4 of 2922 st

SL	55	71.7
bl	56	71.6
y	58	71.4
b	55	71.5
y	47	72.5
bl	56	71.6
nl	60	71.2

E bl of 2922 st

nl	60	71.2
bl	61	71.1
y	52	72.0
b	50	72.2
y	57	71.5
bl	58	71.4
SL	53	71.9

7717

	E line of	29 str 25	
S2		54	71.8
ll		57	71.5
y		59	71.3
b		56	71.6
y		59	71.3
ll		61	71.1
22		59	71.2

50' E of 29 str 25

22		63	70.9
ll		61	71.1
y		60	71.2
ll		58	71.4
y		57	71.5
ll		59	71.3
S2		54	71.8

7717

webster

42

	E of	29 str 25	
S2		54	71.8
ll		57	71.5
y		59	71.3
b		56	71.6
y		59	71.3
ll		54	71.8
22		55	71.7

150' E of 29 str 25

22		52	72.0
ll		59	71.3
y		58	71.4
b		56	71.6
y		56	71.6
ll		56	71.6
S2		54	71.8

TP 576 77.21 572 71.45

77.21

	200'	E of	2900'	W
SL			54	71.8
ll			56	71.5
y			58	71.4
l			55	71.7
y			55	71.7
ll			57	71.5
22			61	71.1

	250'	E of	2900'	W
22			60	71.2
ll			60	71.2
y			56	71.5
l			57	72.1
y			55	71.6
ll			56	71.5
SL			57	72.1

77.21

Wichita

43

	275'	E of	2900'	W
SL			46	72.6
ll			51	72.1
y			52	71.5
l			50	72.2
y			54	71.8
ll			59	71.2
22			59	71.2

	300'	E of	2900'	W
22			59	71.2
ll			45	72.7
y			35	73.7
l			44	72.7
y			56	71.6
ll			53	71.9
SL			50	72.2

77.21

	325'	E of	290 ft	st
SL			48	72.4
ll			50	72.2
"			52	72.0
b			52	72.0
"			54	71.8
ll			56	71.6
nl			56	71.6

350'

	E of	290 ft	st	
nl			56	71.6
ll			52	72.0
"			50	72.2
b			49	72.3
"			52	72.0
ll			50	72.2
SL			48	72.4

77.22

webster

44

	400'	E of	290 ft	st
SL			42	73.0
ll			44	72.8
"			50	72.2
b			52	72.0
"			52	72.0
ll			54	71.8
nl			54	71.8

425'

	E of	290 ft	st	
nl			51	72.1
ll			54	71.8
"			53	71.9
b			52	72.0
"			52	72.0
ll			55	71.5
SL			47	72.5

7721

	450	E of	2900	at
SL			38	73.4
bl			44	72.8
v			50	72.2
b			37	73.5
v			33	73.9
bl			44	72.8
SL			55	71.7

POSTED

	475	E of	2900	at
SL			52	72.0
bl			50	72.2
v			43	72.9
b			47	71.5
v			49	72.3
bl			47	72.5
SL			56	73.6

7721

webster

45

	500	E of	2900	at
SL			39	73.3
bl			48	72.5
v			46	72.6
b			45	72.7
v			42	73.0
bl			37	73.5
SL			44	72.8

	525	E of	2900	at
SL			45	72.7
bl			35	73.7
v			42	73.0
b			49	72.3
v			46	72.6
bl			48	72.4
SL			40	73.2

77.21

	550'	Ey	right	at
SL			38	72.4
ll			48	72.4
7			45	72.7
6			40	73.2
4			48	72.4
ll			50	72.2
2L			52	72.0

575'

	Ey	right	at	
2L			54	71.8
ll			54	71.8
7			52	72.0
1			48	72.4
9			48	72.4
ll			48	72.4
SL			41	73.1

77.21

w. close

46

600' E = w. of 30' at (80')

SL			38	72.4
ll			46	72.6
7			45	72.7
6			46	72.6
4			52	72.0
ll			52	72.0
2L			54	71.9

TP

368 76.99 390 73.31

w. old #
10' E of 2240

W. of 30' at

2L			36	73.4
ll			43	73.7
7			50	72.0
ll			48	72.2
7			46	72.4
ll			44	72.6
SL			36	73.4

7699

W 1/4 of 30th St

SL	41	72.9
bl	48	72.2
7	50	72.0
6	51	71.9
7	53	71.7
bl	49	72.6
n2	40	73.0

center of 30th St

n2	55	71.8
bl	49	72.1
7	55	71.5
1	47	72.3
7	50	72.0
bl	49	72.1
SL	49	72.1

7699

Webster

47

E 1/4 of 30th St

SL	50	72.0
bl	52	71.8
7	48	72.2
6	50	72.0
4	55	71.5
bl	53	71.7
n2	54	71.6

E bl of 30th St

n2	55	71.8
bl	51	71.9
7	49	72.1
bl	54	73.6
7	44	72.6
bl	53	71.7
SL	50	72.0

7699

Ed of 20' ch 25

SL	50	72.0
bl	52	71.8
y	43	72.7
b	35	73.5
y	47	72.3
bl	47	72.3
SL	45	72.5

25' E of 30' ch 25

SL	52	71.8
bl	52	71.8
y	52	71.8
b	52	71.8
y	52	71.8
bl	52	71.8
SL	30	74.0

7699

webster

50' E of 30' ch 25 49

SL	50	72.0
bl	50	72.0
y	52	71.8
b	52	71.8
y	51	71.9
bl	51	71.9
SL	45	72.5

100' E of 30' ch 25

SL	46	72.4
bl	46	72.4
y	34	73.6
b	34	73.6
y	49	72.1
bl	48	72.2
SL	48	72.2

7699

150' E of 30th St

SR		32	73.8
bl		43	72.7
7		44	72.6
1		44	72.6
7		44	72.6
bl	POSTED	43	72.7
SR		40	73.0

POSTED

TP 310 7759 250 7449 ^{From 15-6} E 30

200' E of 30th St

SR		33	74.3
bl		46	73.0
7		49	72.7
6		48	72.8
3		47	72.9
bl		43	73.3
SR		41	73.5

7759

Webster

250' E of 30th St 50

SR		40	73.6
bl		43	73.3
7		48	73.1
6		47	72.9
7		47	72.9
bl		48	72.8
SR		47	72.9

300' E of 30th St

SR		43	73.3
bl		45	73.1
7		44	73.2
6		44	73.2
7		45	73.1
bl		45	73.1
SR		41	73.5

7754

	350'	E of	30th st	
nl			38	73.8
bl			43	73.3
2			43	73.3
b			45	73.1
y			43	73.3
bl			44	73.2
sl			45	73.1

	400'	E of	30th st	
sl			42	73.4
bl			41	73.6
y			38	73.8
b			33	74.3
y			33	74.3
bl			33	74.3
nl			36	74.0

TP 505 7725- 340 74.9

7755

Webster

51

	450'	E of	30th st	
sl			53	74.0
bl			57	73.6
y			56	73.7
b			53	74.0
y			53	74.0
bl			54	73.9
nl			54	73.9

	500'	E of	30th st	
nl			45	74.7
bl			44	74.9
y			48	74.5
b			48	74.5
y			54	73.9
bl			53	74.0
sl			54	73.9

From data

79.25 7

	500'	E of	30 ft	at
SL			64	72.9
SL			58	73.5
4			56	73.7
6			50	74.3
4			47	74.6
SL			49	74.4
22			48	74.5

600' E of W side 3120 (60')

22			50	74.3
SL			50	74.3
4			51	74.2
6			61	73.2
4			66	72.7
SL			70	72.3
SL			67	72.6

79.25

W side

52

	W side of	31 ft	at	
SL			65	72.8
SL			71	72.2
4			66	72.7
6			64	72.9
4			48	74.5
SL			44	74.9
22			44	74.9

W side of 31 ft at

22			54	73.9
SL			56	73.7
"			62	73.1
6			65	72.8
4			67	72.6
SL			75	71.8
SL			77	71.6

7 79.25

center of 31st st
(center RR
(top of RR ties))

52	65	72.7
bl	62	73.1
7	60	73.3
6	56	73.7
4	54	73.9
bl	51	74.2
22	49	74.4

E 1/4 of 31st st

22	66	72.7
bl	67	72.7
7	64	72.9
6	72	72.1
7	75	71.8
bl	76	71.7
52	76	71.7

79.25

Webster

53

E 1/4 of 31st st

52	72	72.1
bl	71	72.2
4	69	72.3
6	67	72.5
7	65	73.0
bl	64	72.9
22	66	72.7

E 1/4 of 31st st

22	62	73.1
bl	68	72.5
7	70	72.3
6	67	72.4
7	68	72.5
bl	65	72.8
52	61	73.2

TP 1127 84.83 570 73.56

BM 3E
314 Webster

8483

	50'	E of	31.25	25
S2			94	75.4
bl			98	75.0
4			107	74.1
6			107	74.1
7			109	73.9
bl			120	72.8
22			125	73.3

	75'	E of	31.25	25
22			116	73.2
bl			111	73.7
4			103	74.5
6			107	74.1
7			104	74.4
bl			91	75.7
S2			75	77.3

8483

Webster

54

	100'	E of	31.25	25
S2			62	78.6
bl			74	77.4
4			91	75.7
6			100	74.8
7			105	74.3
bl			108	74.0
22			112	73.6

	125'	E of	31.25	25
22			88	76.0
bl			95	75.3
4			97	75.1
6			96	75.2
7			80	76.8
bl			62	78.6
S2			59	78.9

8483

	150'	E of	31 21	21
S2			60	78.8
hl			70	77.8
7			78	77.0
6			87	76.1
7			92	75.6
hl	POSTED		92	75.6
22			90	75.8
	175'	E of	31 20	20
22			69	78.9
hl			70	77.8
7			77	77.1
6			71	77.7
7			62	78.6
hl			60	78.8
S2			54	79.4

8483

Walden

55

	200'	E of	31 21	21
S2			27	81.4
hl			45	80.3
7			59	78.9
6			69	77.9
7			69	77.9
hl			66	78.2
22			77	77.1
	225'	E of	31 21	21
22			69	77.9
hl			73	77.5
7			64	78.4
6			60	78.8
7			52	79.5
hl			50	79.8
S2			44	80.4

8483

250' E of 3127 st

SL	26	82.2
bl	46	80.2
7	54	79.4
b	54	79.4
7	54	79.4
bl	54	79.4
nl	50	79.8

275' E of 2107 st

nl	43	80.5
bl	47	80.1
7	43	80.5
b	30	81.5
7	35	81.3
bl	43	80.5
SL	45	80.3

8483

webster

300' E of 3127 st

SL	22	82.6
bl	30	81.5
7	26	82.2
b	36	81.2
7	37	81.1
bl	36	81.2
nl	22	82.6

TP 836 90.53 266 82.17

325' E of 3127 st

nl	81	82.4
bl	79	82.6
7	80	82.5
b	77	82.8
7	75	83.0
bl	83	82.2
SL	85	82.0

56

90.53

	350'	E of	31 25	25
SL			78	82.7
bl			70	83.5
"			57	84.8
b.			49	85.6
"			62	84.3
bl			65	84.0
nl			61	84.4

375' E of 31 25 25

nl	55	85.0
bl	57	84.8
"	58	84.7
b.	60	84.5
"	62	84.3
bl	61	84.4
SL	69	83.6

90.53

webster

57

	400'	E of	31 25	25
SL			63	84.2
bl			59	84.6
"			57	84.8
b.			52	85.2
"			48	85.7
bl			44	86.1
nl			49	86.1

425' E of 31 25 25

nl	58	86.7
bl	56	86.9
"	57	86.8
b.	40	86.5
"	43	86.2
bl	50	85.5
SL	58	84.7

90.53

	450	E of	31.21	25
SL			49	85.6
bl			43	86.2
y			28	86.7
b			37	86.8
y			37	86.8
bl			34	87.1
SL			33	87.2

500 E of 31.21 25

SL			29	87.6
bl			27	87.8
y			26	87.9
b			31	87.4
y			40	86.5
bl			40	86.5
SL			44	86.1

90.53

Webster

58

	550	E of	31.21	25
SL			59	84.6
bl			54	85.1
y			45	86.0
b			58	86.7
y			36	86.9
bl			33	87.2
SL			29	87.6

600 E = W of 32.21 (60')

SL			26	87.9
bl			32	87.3
y			36	86.9
b			39	86.6
y			47	85.8
bl			50	85.5
SL			51	85.4

9053

W 1/4 of 32nd st

SE	52	85.3
NE	52	85.3
N	48	85.7
E	43	86.2
S	34	87.1
SW	29	87.6
W	24	88.1

W 1/4 of 32nd st

NE	22	88.3
SE	29	87.6
S	36	86.9
E	40	86.5
N	49	85.6
SW	53	85.2
W	55	85.0

9053

Wehste

59

Center of 32nd st

SE	56	84.9
NE	53	85.2
N	47	85.8
E	41	86.4
S	35	87.0
SW	30	87.5
W	22	88.3

E 1/4 of 32nd st

NE	25	88.0
SE	31	87.4
S	37	86.8
E	44	86.1
N	51	85.4
SW	53	85.2
W	57	84.8

Ebb of 32nd St

SL		50	85.5
bl		50	85.5
"		46	85.9
b		40	86.5
"		26	86.9
bl		39	87.1
SL		26	87.9

E line of 32nd St

SL		26	87.9
bl		31	87.4
"		34	87.1
b		37	86.8
"		43	86.2
bl		48	85.7
SL		51	85.4

TP 160 90.55 1.85 89.68

50' E of 32nd St

SL		53	85.0
bl		47	85.6
"		45	85.8
b		39	86.4
"		34	86.7
bl		32	87.1
SL		25	87.8

100' E of 32nd St

SL		23	88.0
bl		34	86.9
"		40	86.3
b		42	86.1
"		47	85.6
bl		50	85.3
SL		53	85.0

90.28

	150'	E of	3rd st	
SL			63	84.0
HL			55	84.8
Y			56	84.7
6			48	85.5
7			43	85.9
HL			39	86.4
HL			29	87.4

	200'	E of	3rd st	
HL			31	87.2
HL			28	86.5
Y			52	85.1
6			54	84.9
7			64	83.9
HL			68	82.5
SL			83	82.0

TP 3.69 85.84 810 92.15

85.84

Wester

61

	225'	E of	3rd st	
SL			45	81.3
HL			39	81.9
Y			33	82.5
6			25	83.3
7			19	83.9
HL			14	85.4
HL			11	85.7

	250'	E of	3rd st	
HL			46	81.2
HL			51	80.7
Y			56	80.2
HL			57	80.1
Y			52	80.6
HL			59	79.9
SL			57	80.1

		<u>85.84</u>	
275'	E of	32m at	
SL		104	75.4
bl		102	75.6
y		102	75.6
b		105	75.3
y		107	75.1
bl		102	75.6
nl		98	76.0
TP	142	<u>76.7</u>	105.9 75.25
	300	E of	32m at
nl		76.2	60 70.7
bl		62	70.5
y		64	70.3
b		67	70.0
y		72	69.5
bl		76	69.1
SL		77	69.0
TP	075	<u>67.62</u>	9.80 66.87

		<u>67.62</u>		<u>Webster</u>	
338'	E of =	W side of	33 at	(60')	62
SL		64	61.2		
bl		58	60.8		
y		52	62.3		
b		51	62.5		
y		46	63.0		
bl		37	63.9		
nl		28	64.8		
		W side of	33 d		
nl		41	63.5		
bl		50	62.6		
y		58	61.8		
b		62	61.4		
y		64	61.2		
bl		66	61.0		
SL		71	60.0		

67.62

	W 1/4 of	33 d 25	
SL		84	59.6
bl		72	60.4
y		72	60.4
b		70	60.6
y		67	61.0
bl		62	61.4
SL		59	61.7

center of 33 d 25

SL		67	60.9
bl		74	60.2
y		75	60.1
b		75	60.1
y		80	59.6
bl		80	59.6
SL		86	59.0

67.62

Webster

63

E 1/4 of 33 d 25

SL		96	58.0
bl		92	58.3
y		91	58.5
b		89	58.7
y		85	59.1
bl		82	59.4
SL		77	59.9

E bl of 33 d 25

SL		83	59.3
bl		89	58.7
y		93	58.3
b		95	58.1
y		98	57.8
bl		98	57.8
SL		97	57.9

67.62

1-10

8 line of 33 d w

S2

11.2 56.4

ll

10.9 56.7

y

10.5 57.1

b

10.2 57.4

y

10.2 57.4

ll

9.8 57.8

72

9.6 58.0

POSTED

64

Excavation of 3rd st (60)

SE Woolman to Bay

6633

32nd st

65

	1150	65.84	54.34	Wolman	75	58.8
TP	690	66.33	59.43	bl	93	57.0

Section of Woolman st

wt		112	55.1		110	55.3
----	--	-----	------	--	-----	------

bl		112	55.0		110	55.3
----	--	-----	------	--	-----	------

"		114	54.9	bl	126	53.7
---	--	-----	------	----	-----	------

bl		109	55.4	EL	140	52.3
----	--	-----	------	----	-----	------

"		110	55.3		75' S of Woolman	
---	--	-----	------	--	------------------	--

bl		109	55.4	EL	117	54.6
----	--	-----	------	----	-----	------

EL		110	55.3	bl	101	56.2
----	--	-----	------	----	-----	------

25' S of Woolman

EL		122	53.1	bl	87	57.6
----	--	-----	------	----	----	------

bl		125	53.8	"	80	58.0
----	--	-----	------	---	----	------

"		115	54.8	bl	66	59.7
---	--	-----	------	----	----	------

bl		115	54.8	wt	57	60.6
----	--	-----	------	----	----	------

"		117	54.6			
---	--	-----	------	--	--	--

bl		116	54.7			
----	--	-----	------	--	--	--

wt		109	55.4			
----	--	-----	------	--	--	--

66.33

100' S of Woolman

W.L.	4.3	62.0
bl	5.0	61.3
y	6.3	60.0
l	7.1	59.2
y	6.8	59.5
bl	7.5	58.8
El	9.3	57.0

125' S of Woolman

El	8.0	58.3
bl	7.3	59.0
y	6.6	59.7
l	6.0	60.3
y	5.8	60.5
bl	4.5	61.8
W.L.	4.0	62.3

66.33

32nd St

150' S of Woolman

W.L.	4.0	62.3
bl	4.7	61.6
y	5.3	61.0
l	5.8	60.5
y	5.7	60.6
bl	6.3	60.0
El	7.8	58.5

200' S of Woolman

El	8.9	57.4
bl	8.2	58.1
y	7.6	58.7
l	7.1	59.2
y	6.3	60.0
bl	6.4	59.9
W.L.	6.3	60.0

66

6633

250 S of Woolman

W2		78	58.5
bl		78	58.5
y		85	57.8
b		85	57.8
y		85	57.8
bl		86	57.7
92		91	57.2

300' S = N 2 of Valle (80')

E2		98	56.5
bl		97	56.6
y		97	56.6
b		96	56.7
y		96	56.7
bl		93	57.0
W2		87	57.6

TP 118 5893 858 5775

5893

32nd 25

N 66 of Valle

67

W2		18	57.1
bl		20	56.9
y		26	56.3
b		26	56.3
y		25	56.4
bl		25	56.4
E2		30	55.9

N 1/4 of Valle

E2		33	55.6
bl		27	56.2
y		28	56.1
b		31	55.8
y		30	55.9
bl		27	56.2
W2		22	56.7

5893

Center of Vals

W2	24	56.5
hh	30	55.9
y	36	55.3
b	33	55.6
y	33	55.6
hh	35	55.4
E2	40	54.9

S 1/4 of Vals

E2	50	53.9
hh	45	54.4
y	43	54.6
b	40	54.9
y	38	55.1
hh	36	55.3
W2	22	56.7

5895

32nd 17

S 1/4 of Vals

W2	30	55.9
hh	40	54.9
y	44	54.5
b	44	54.5
y	53	53.6
hh	51	53.8
E2	57	53.2

S 1/4 of Vals

E2	67	52.2
hh	60	52.9
y	59	53.0
b	57	53.7
y	48	54.1
hh	48	54.1
W2	41	54.8

68

5893

	50'	Sof	Value
W2			62 52.7
bl			8.8 50.1
y			9.1 49.8
b			9.8 49.1
y			11.4 47.5
bl			11.8 47.1
EL			12.7 46.2
7P	285	5058	11.20 47.73
	100'	Sof	Value
EL			8.5 42.1
bl			7.2 43.4
y			6.1 44.5
b			4.9 45.7
y			4.1 46.5
bl			3.0 47.6
W2			1.9 48.7

5058

52nd st

69

	150'	Sof	Woolman
W2			4.5 46.1
bl			6.0 44.6
y			7.0 43.6
b			7.7 42.9
y			9.2 41.4
bl			9.8 40.8
EL			11.1 39.5
	195'	Sof =	W d ST 27 (50')
EL			10.3 37.3
bl			12.7 37.9
y			12.3 38.3
b			11.3 39.3
y			10.2 40.4
bl			9.8 40.8
W2			8.1 42.5

50.58

N bl of ST st

W2		9.0	41.6
bl		10.6	40.0
4		11.0	39.6
6		11.9	38.7
7		12.6	38.0
bl		13.1	37.5
8L		12.7	36.9
TP	840	4657	1241 3817

N 1/4 of ST st

EL		10.7	36.3
bl		9.4	37.2
4		8.8	37.8
6		7.9	38.7
7		7.3	39.3
bl		6.9	39.7
W2		5.7	40.9

4657

32

center of ST st

70

W2		6.1	40.5
bl		7.2	39.4
4		7.5	39.1
6		8.2	38.4
7		8.9	37.7
bl		9.5	37.1
EL		10.0	36.6

S 1/4 of ST st

EL		10.5	36.1
bl		9.9	36.7
4		9.4	37.2
6		8.8	37.8
7		7.8	38.8
bl		7.5	39.1
W2		6.1	40.5

4657 46.57

S lb of ST 2A

WR	64	40.2
bl	77	38.9
4	82	38.4
6	84	38.2
4	91	37.5
bl	105	36.1
EL	108	35.8

S lb of ST 2A

EL	97	36.9
bl	103	36.3
4	94	37.2
6	87	37.9
4	81	38.5
bl	78	38.8
WR	65	40.1

4657

71

300' S of Hall = 2 L Martin (80)

WR	55	41.1
bl	60	40.6
4	64	40.2
6	65	40.1
4	65	40.1
bl	67	39.9
EL	70	39.6

N lb of Martin

EL	65	40.1
bl	60	40.6
4	59	40.7
6	56	41.0
4	52	41.0
bl	54	41.2
WR	57	41.5

46.57N¹/₄ of Norton

W2	49	41.7
bl	52	41.4
γ	53	41.3
b	54	41.2
γ	57	40.9
bl	56	41.0
E2	55	41.1

center of Norton

E2	52	41.4
bl	53	41.3
γ	52	41.4
b	53	41.3
γ	55	41.4
bl	51	41.5
W2	48	41.8

46.57

32nd st

S¹/₄ of Norton st

72

W2	54	41.2
bl	54	41.2
γ	54	41.2
b	51	41.5
γ	50	41.6
bl	50	41.6
E2	50	41.6

S bl of Norton

E2	48	41.8
bl	49	41.7
γ	51	41.5
b	53	41.3
γ	56	41.0
bl	52	41.4
W2	52	41.4

4659

S Lin of Merton

W2	6.1	40.5
bl	6.0	40.6
y	6.0	40.6
b	5.9	40.7
y	5.5	41.1
bl	5.0	41.6
EL	5.0	41.6

120

4249

5228

41.9

for m w
m m

50 S of Merton

W2	3.7	39.8
bl	3.7	39.8
y	3.5	39.0
b	3.3	39.2
y	3.1	39.4
bl	2.9	39.6
EL	2.4	40.1

4249

32 m w

73

100 S of Merton

EL	3.5	39.0
bl	4.0	38.5
y	4.3	38.2
bl	4.4	37.9
y	4.8	37.7
bl	4.6	37.9
W2	4.4	38.1

150

S of

Merton

W2	7.2	35.3
bl	7.5	35.0
y	7.4	35.1
b	7.3	35.2
y	7.0	35.5
bl	6.5	36.0
EL	6.0	36.6
TP	0.23	36.19

2.1
25.99

36.19

165' S of Austin = h d of Study in East (Raketon) (80')

EL	14	35.8
bl	0.8	35.3
4	1.6	34.6
6	1.9	34.3
7	2.0	34.2
bl	1.9	34.3
WL	2.0	34.2

n bl of Raketon st

WL	2.6	33.6
bl	2.4	33.8
4	2.5	33.7
6	2.4	33.8
7	2.7	33.8
bl	1.5	34.7
EL	1.0	35.2

3619

37. and

74

n bl of Raketon st

EL	2.2	34.0
bl	2.2	33.9
4	2.8	33.4
6	3.1	33.1
7	3.4	33.0
bl	3.3	32.9
WL	3.7	32.5

Center of Raketon

WL	4.4	31.8
bl	3.8	32.4
4	4.0	32.2
6	3.8	32.4
7	3.6	32.6
bl	3.3	32.9
EL	3.0	33.2

S 1/4 of Ralston

EL	36	32.6
bl	44	31.8
7	50	31.2
b	46	31.6
7	48	31.4
bl	58	30.4
WR	60	30.2

S 1/4 of Ralston

WR	90	27.2
bl	64	29.8
7	67	29.5
b	66	29.6
7	65	29.7
bl	60	30.2
EL	48	31.4

(245's) S 1/4 of Ralston

EL	65	29.7
bl	73	28.9
"	77	28.5
b	77	28.5
7	80	28.2
bl	84	27.8
WR	110	25.2

TP 026 2449 1196 2423

275' S of Ralston
30' S of Ralston

WR	38	20.7
bl	12	23.3
7	0.0	24.5
6	+0.5	25.0
7	+0.4	24.9
bl	0.0	24.2
EL	+1.0	25.2

2449

300' S =

N 2 of Gruby (80')

EL	33	21.2
bl	37	20.8
v	38	20.7
b	32	21.3
v	39	20.6
bl	72	17.3
WR	91	15.4

N bl of Gruby

WR	112	13.3
bl	98	14.7
v	64	18.3
b	48	19.7
v	176	18.9
bl	60	18.5
EL	49	19.6

244932

N

"4 of Gruby

76

EL	66	17.9
bl	80	16.5
v	75	17.0
b	58	18.7
v	70	17.5
bl	102	14.3
WR	115	13.0

Center of Gruby

WR	123	12.2
bl	98	14.7
v	71	17.4
b	67	17.8
v	106	13.9
bl	104	14.1
EL	90	15.5

2449

S 1/4 of Grady

EL	10.9	13.6
bl	11.5	13.0
"	9.0	15.5
b	7.3	17.2
"	8.8	15.7
bl	12.0	12.5
WR	13.0	11.5

S 1/4 of Grady

WR	11.8	12.7
bl	13.5	11.0
"	9.3	15.2
b	7.4	17.1
"	9.0	15.5
bl	10.1	14.4
EL	11.0	13.5

2449

32

S 1/4 of Grady

77

EL	11.0	13.5
bl	9.7	14.8
"	8.0	16.5
b	7.1	17.4
"	8.0	16.5
bl	11.0	13.5
WR	11.9	12.6

X 10' S of Grady

WR	6.9	17.6
bl	7.6	16.9
"	7.0	17.5
b	7.1	17.4
"	7.2	17.3
bl	10.0	14.5
EL	15.0	9.3

702 of RR
Rail

X See Page 81

2449

30' S of Greeley

EL	78	16.7
bl	7.7	16.8
y	7.5	17.3
b	6.7	17.8
y	6.7	17.8
bl	5.3	19.2
WL	4.6	19.9

40' S of Greeley

WL	2.5	22.3
bl	2.7	21.8
y	4.8	19.7
l	5.3	19.2
y	6.3	18.2
bl	7.0	17.5
EL	8.0	16.5

TP 1204 3543 110 23.39

3543

3220

60' S of Greeley 70

EL	14.7	20.7
bl	15.2	21.8
y	12.0	23.4
bl	12.3	23.1
bl	14.5	20.9
bl	14.5	20.9
y	13.8	21.6
y	13.4	22.0
bl	7.3	28.1
WL	7.4	28.0

80' S of Greeley (72' wide line)

EL	8.0	27.4
bl	7.3	28.1
y	4.2	31.2
bl + 24 = 24	11.7	23.7
bl + 24	9.0	26.4
TP	7.66	49.71
bl	4.58	33.05
bl	4.5	36.2
WL	5.7	35.4

40.71

100' S of Greely (84' wide)

EL	7.9	32.8
+10' bl	6.6	34.1
+20'	4.7	36.0
+30'	3.1	37.6
+40'	2.0	39.7
+48'	13.2	27.5
+60'	12.8	27.9
+70'	12.0	28.7
+72' bl	2.0	38.7
+84' = WR	5.7	35.0

40.71

32.2

79

120' S of Greely (96' wide)

EL	4.0	36.7
+10' bl	2.8	37.9
+20'	1.6	39.1
+30'	1.0	39.7
+40'	1.0	39.7
+49'	0.7	40.0
+52'	8.5	32.2
+60'	8.3	32.4
+70'	7.7	33.0
+80'	5.0	35.7
+96'	7.2	33.5

4071

Pueblo 135' S of Grady = 165' n of Logan

EL	1.0	39.7
Hoble	0.6	40.1
220	0.4	40.3
+20	0.2	40.5
+40	0.0	40.7
+50	0.0	40.7

POSTED

(Pueblo) 135' S of Grady = 165' n of Logan

E. L. Going South	0.0	40.7
47	0.0	40.7
46	3.9	37.7
44	5.8	34.9
4	5.2	35.5
6	4.8	35.9
4	4.3	36.4
46	5.5	35.2
WA Going South	6.7	34.3

4071

150' n of Logan

WA	5.5	35.2
46	4.4	36.3
47	5.1	37.6
6	3.5	37.2
4	4.0	36.7
TP	10.44	49.29
46	1.86	38.85
42	8.3	40.9
42	7.5	41.7

Balance of 32nd rd st
in Book 312

See Plan next Page

80

Push

E 2

4 1/2

7 1/2

7 20

7 40

7 50

(Push)

E 2

7 7

4 1/2

7 9

4 1/2

6

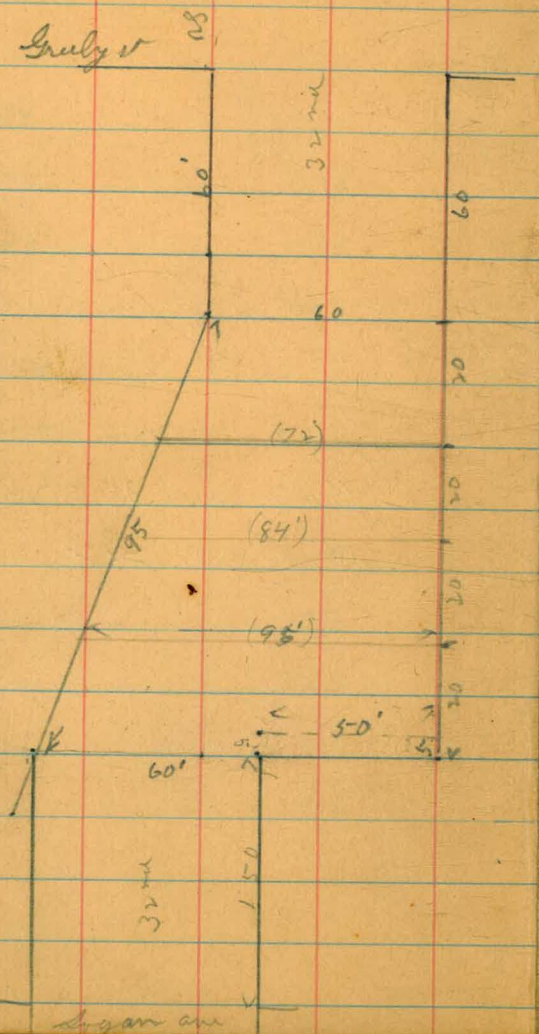
4

6

4

6 1/2

W 2



25.96

2' N Rail

8' S of Grady on west

w 2	9.2
6 1/2	9.0
4	8.6
1	8.8
4	9.0
6 1/2	9.2
E 2	9.5

30' Sq Grady on East

2' S of Rail

E 2	8.6
6 1/2	8.5
4	8.4
6	8.5
4	8.8
6 1/2	8.8
4	9.0
W 2	9.5

TRAVERSE TABLE FOR TRANSIT BOOK.

From 1° to 90° for a distance of 100.

Degrees.	DEGREES.		¼ DEGREE.		½ DEGREE.		¾ DEGREE.		Degrees.
	Lat.	Dep.	Lat.	Dep.	Lat.	Dep.	Lat.	Dep.	
0			100.00	0.44	100.00	0.87	99.99	1.31	89
1	99.98	1.75	99.98	2.18	99.97	2.62	99.95	3.05	88
2	99.94	3.49	99.92	3.93	99.91	4.36	99.88	4.80	87
3	99.86	5.23	99.84	5.67	99.81	6.10	99.79	6.54	86
4	99.76	6.98	99.73	7.41	99.69	7.85	99.66	8.28	85
5	99.62	8.72	99.58	9.15	99.54	9.58	99.50	10.02	84
6	99.45	10.45	99.41	10.89	99.36	11.32	99.31	11.75	83
7	99.25	12.19	99.20	12.62	99.14	13.05	99.09	13.49	82
8	99.03	13.92	98.97	14.35	98.90	14.78	98.84	15.21	81
9	98.77	15.64	98.70	16.07	98.63	16.50	98.56	16.93	80
10	98.48	17.36	98.40	17.79	98.33	18.22	98.25	18.65	79
11	98.16	19.08	98.08	19.51	97.99	19.94	97.90	20.36	78
12	97.81	20.79	97.72	21.22	97.63	21.64	97.53	22.07	77
13	97.44	22.50	97.34	22.92	97.24	23.34	97.13	23.77	76
14	97.03	24.19	96.92	24.62	96.81	25.04	96.70	25.46	75
15	96.59	25.88	96.48	26.30	96.36	26.72	96.25	27.14	74
16	96.13	27.56	96.00	27.98	95.88	28.40	95.76	28.82	73
17	95.63	29.24	95.50	29.65	95.37	30.07	95.24	30.49	72
18	95.11	30.90	94.97	31.32	94.83	31.73	94.69	32.14	71
19	94.55	32.56	94.41	32.97	94.26	33.38	94.12	33.79	70
20	93.97	34.20	93.82	34.61	93.67	35.02	93.51	35.43	69
21	93.36	35.84	93.20	36.24	93.04	36.65	92.88	37.06	68
22	92.72	37.46	92.55	37.86	92.39	38.27	92.22	38.67	67
23	92.05	39.07	91.88	39.47	91.71	39.87	91.53	40.27	66
24	91.35	40.67	91.18	41.07	91.00	41.47	90.81	41.87	65
25	90.63	42.26	90.45	42.66	90.26	43.05	90.07	43.44	64
26	89.88	43.84	89.69	44.23	89.49	44.62	89.30	45.01	63
27	89.10	45.40	88.90	45.79	88.70	46.17	88.50	46.56	62
28	88.29	46.95	88.09	47.33	87.88	47.72	87.67	48.10	61
29	87.46	48.48	87.25	48.86	87.04	49.24	86.82	49.62	60
30	86.60	50.00	86.38	50.38	86.16	50.75	85.94	51.13	59
31	85.72	51.50	85.49	51.88	85.26	52.25	85.04	52.62	58
32	84.80	52.99	84.57	53.36	84.34	53.73	84.10	54.10	57
33	83.87	54.46	83.63	54.83	83.39	55.19	83.15	55.56	56
34	82.90	55.92	82.66	56.28	82.41	56.64	82.16	57.00	55
35	81.92	57.36	81.66	57.71	81.41	58.07	81.16	58.42	54
36	80.90	58.78	80.64	59.13	80.39	59.48	80.13	59.83	53
37	79.86	60.18	79.60	60.53	79.34	60.88	79.07	61.22	52
38	78.80	61.57	78.53	61.91	78.26	62.25	77.99	62.59	51
39	77.71	62.93	77.44	63.27	77.16	63.61	76.88	63.94	50
40	76.60	64.28	76.32	64.61	76.04	64.94	75.76	65.28	49
41	75.47	65.61	75.18	65.93	74.90	66.26	74.61	66.59	48
42	74.31	66.91	74.02	67.24	73.73	67.56	73.43	67.88	47
43	73.14	68.20	72.84	68.52	72.54	68.84	72.24	69.15	46
44	71.93	69.47	71.63	69.78	71.33	70.09	71.02	70.40	45
45	70.71	70.71							
Degrees.	Dep.	Lat.	Dep.	Lat.	Dep.	Lat.	Dep.	Lat.	Degrees.
Degrees.	DEGREES.		¼ DEGREE.		½ DEGREE.		¾ DEGREE.		Degrees.

Published by H. S. CROCKER COMPANY, Stationers, Drawing Materials,
Mathematical Instruments, etc., San Francisco.